



LAGUNA

- Fresh Starts -



A beautiful summers day at Yanchep Lagoon - Summer 2019

LAGUNA - FRESH STARTS

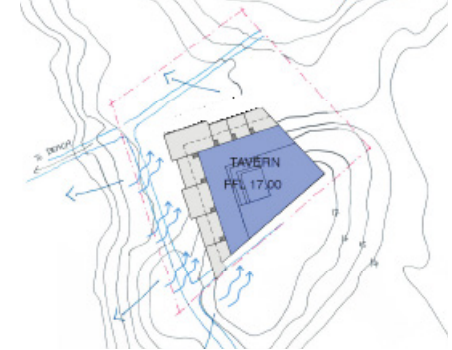
A gathering place for all generations. Breakfast, lunch or dinner, or just a chat over coffee, or perhaps a drink with friends after a swim at the beach.



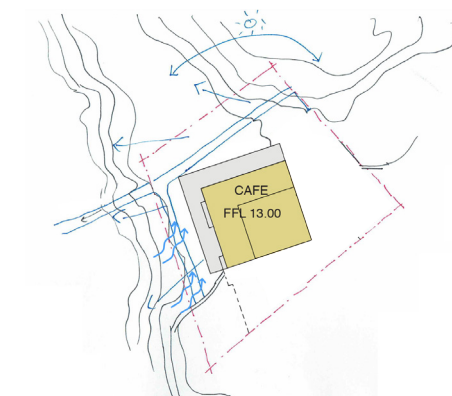
The concept of 'Laguna - Fresh Starts' is defined by a series of terraces that follow the natural contours of the dunescape on the site of the former Yanchep Surf Life Saving Club.

These terraces capture stunning views out across the ocean and create a unique place that locals, interstate and overseas visitors can enjoy all times of the day throughout the year.

UPPER LEVEL - TAVERN



LOWER LEVEL - CAFE



The cafe and beach tavern are designed to mould into the existing dune contours.

- Fresh starts begin at Laguna -

MATERIAL PALETTE



The interior and exterior material palette for 'Laguna - Fresh Starts' is composed of textured natural finishes with a organic and elemental feel in keeping with the desired look generated within the Yanchep Lagoon Master Plan consultation period.

- Fresh starts begin at Laguna -

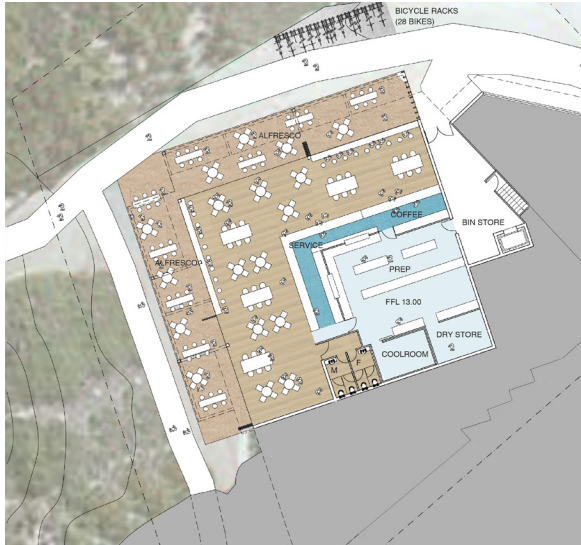
CAFE

The Cafe is located on the lower level of the proposal, nestled into the dunes, capturing stunning views to the Yachep Lagoon Beach and the Ocean to the north.

The spaces are organised to follow the natural contours of the site and are oriented to capture the northern winter sun and natural ventilation through the spaces, especially the south west sea breeze.

This space is comprised of:

- 300 sqm of internal floor area
- 150sqm of external/alfresco dining area



LOOK & FEEL IMAGERY



- Fresh starts begin at Laguna -

BEACH TAVERN

The Beach Tavern is located on the upper level of the proposal, maximising views across Yanchep Lagoon and affords 180 degree ocean views, from the south to the north.

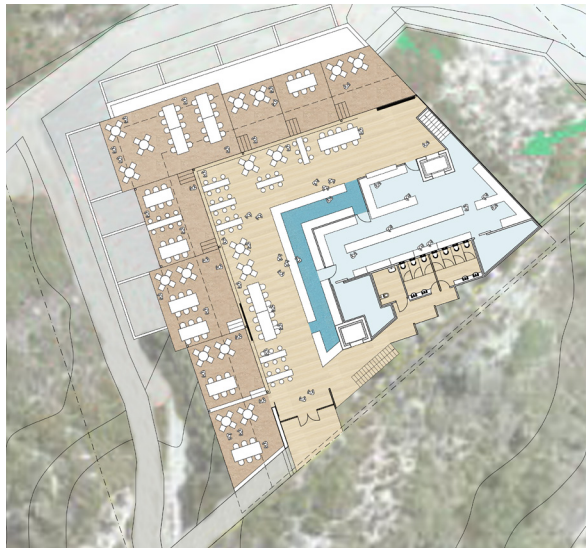
Stepped external terraces follow the natural contours of the dunescape and allows for built in benches and tiered seating.

Operable glazed facade elements enable the space to be both open or closed, depending on coastal weather conditions and at all times allow for views across the ocean.

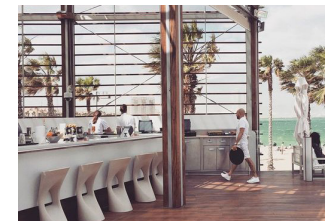
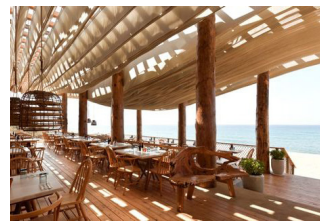
The spaces are oriented to capture northern winter sun and natural ventilation through the spaces, with WA's famous cooling sea breeze.

This space is comprised of:

- 400 sqm of internal floor area
- 200sqm of external/alfresco dining area



LOOK & FEEL IMAGERY



- Fresh starts begin at Laguna -

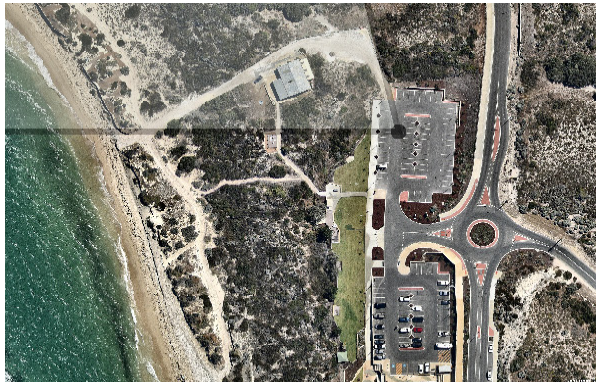
birchgroup
architecture project management property development

VIEW FROM CARPARK



'LAGUNA -FRESH STARTS' NESTLED BEHIND THE DUNES.

VIEW TAKEN FROM THE CARPARK LOOKING OVER TOWARDS THE DUNE.



- Fresh starts begin at Laguna -