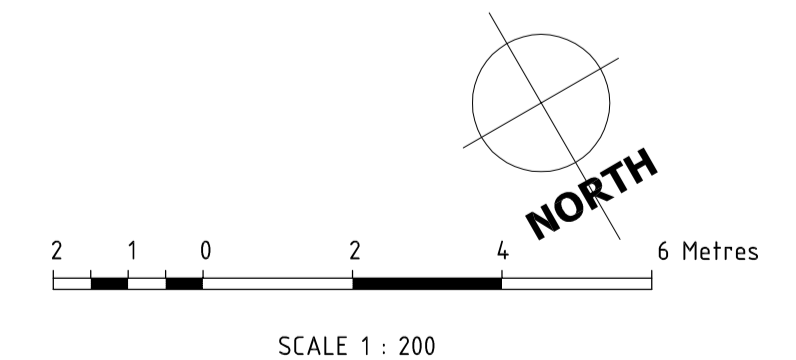


TOTAL PARKING BAYS PROVIDED = 51



PRELIMINARY

FLOOR/SITE PLAN

NEW CHILD CARE FACILITY
AT LOT 179
EAST ROAD HOCKING

DRAWN	JF		
CHECKED			
APPROVED			
SCALE	1 : 200	DATE	MAY 19
JOB No.		FILE No.	
			SK-01 c.

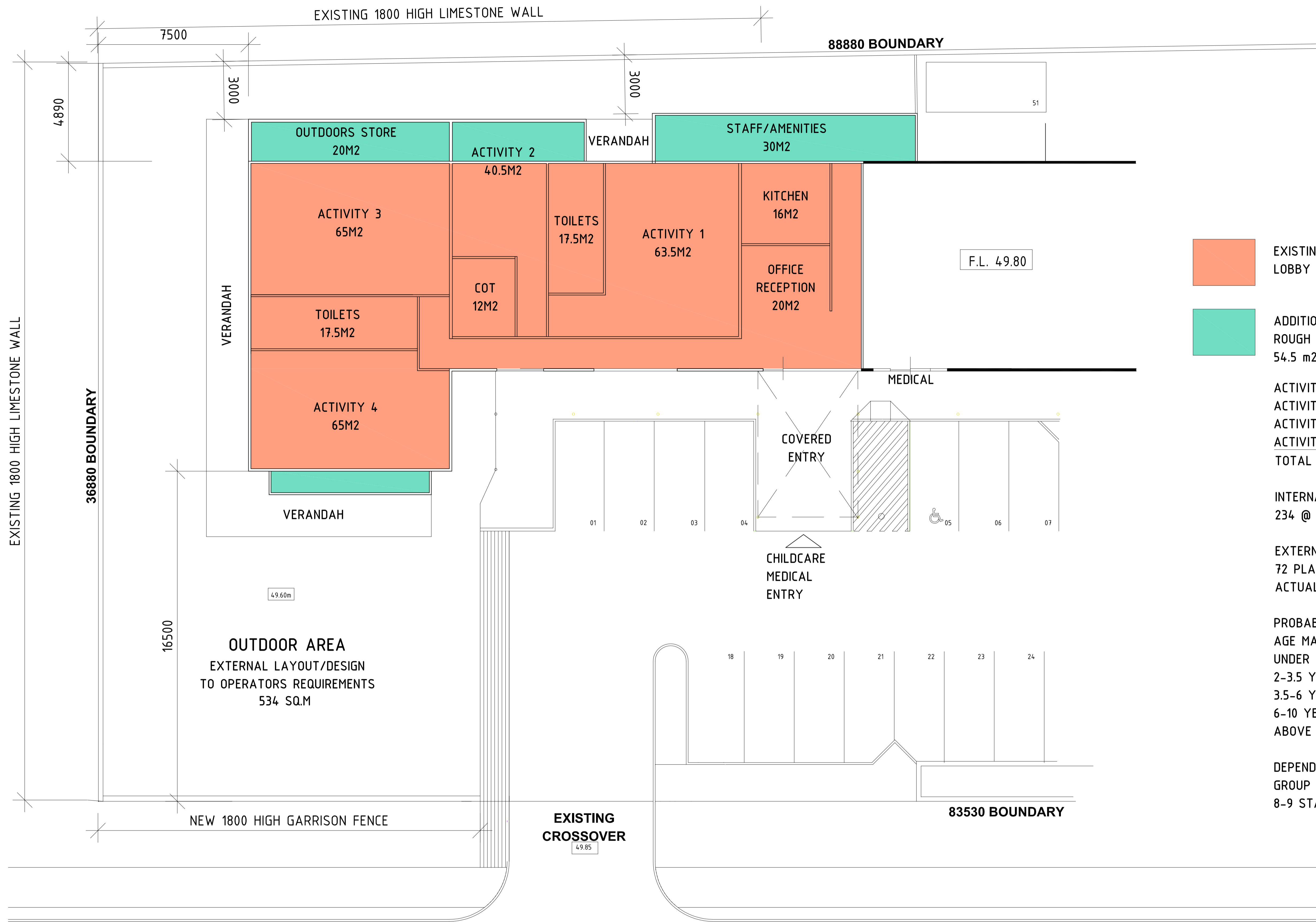
REV	DATE	
A	3.6.19	PRELIMINARY ISSUE
B	7.8.19	EXISTING LANDSCAPING ADDED - PEDESTRIAN WALKWAY FROM STREET ADDED. BIN ENCLOSURE ADDED.
C	25.9.19	RIGHT METRE MARKS ADDED - PEDESTRIAN WALKWAY FROM STREET ADDED. BIN ENCLOSURE ADDED.

COPYRIGHT
THIS DRAWING IS COPYRIGHT AND THE PROPERTY OF JEFF FREEMAN ARCHITECTS & IT MUST NOT BE RETAINED, COPIED OR USED WITHOUT THE AUTHORITY OF JEFF FREEMAN ARCHITECTS.

DISCLAIMER
THIS DRAWING & ITS CONTENTS ARE ELECTRONICALLY GENERATED, ARE CONFIDENTIAL & MAY ONLY BE USED FOR THE PURPOSE FOR WHICH THEY WERE INTENDED. JEFF FREEMAN ARCHITECTS WILL NOT ACCEPT RESPONSIBILITY FOR ANY CONSEQUENCES ARISING FROM THE USE OF THE DRAWING FOR OTHER THAN ITS INTENDED PURPOSE OR WHERE THE DRAWING HAS BEEN ALTERED, AMENDED OR CHANGED MANUALLY OR ELECTRONICALLY BY ANY THIRD PARTY.

NOTE
THIS IS AN UN-CONTROLLED DOCUMENT ISSUED FOR PRELIMINARY PURPOSES ONLY, UNLESS THE CHECKED SECTIONS ARE SIGNED OR COMPLETED. FIGURE DIMENSIONS TAKE PRECEDENCE OVER SCALED. DO NOT SCALE REDUCED SIZE DRAWINGS. VERIFY DIMENSIONS PRIOR TO COMMENCING ANY ON-SITE OR OFF-SITE WORKS OR FABRICATION. IF IN DOUBT - ASK.





EXISTING FLOOR AREA INCL LOBBY AND CHEMIST = 362m2

ADDITIONAL AREA REQD TO ACHIEVE ROUGH SKETCH PROPOSAL OF TENANT 54.5 m2

ACTIVITY 1	63.5 m2
ACTIVITY 2	40.5 m2
ACTIVITY 3	65 m2
ACTIVITY 4	65 m2
TOTAL FLOOR AREAS (4)	234 m2

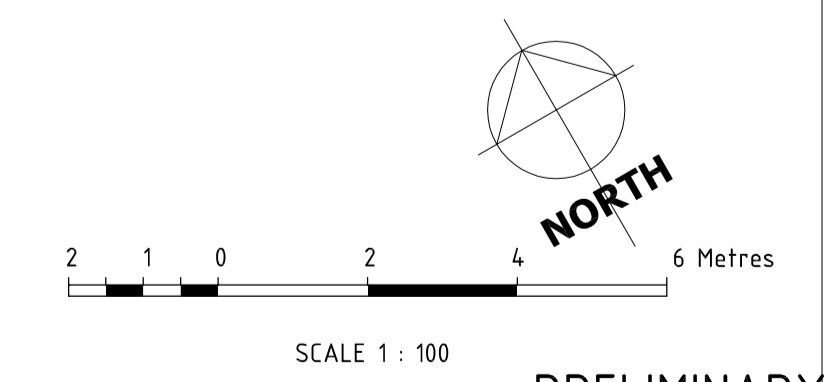
INTERNAL ACCOMODATION CALCULATION
234 @ 3.25 = 72 PLACES ***

EXTERNAL ACCOMODATION CALCULATIONS
72 PLACE X 7 m2 = 504 m2 (REQD)
ACTUAL OUTDOOR SPACE PROVIDED = 534 m2

PROBABLE CHILD PLACEMENT NUMBERS & AGE MAKEUP:-

UNDER 2 YEARS	-	7 PLACES
2-3.5 YEARS	-	7 PLACES
3.5-6 YEARS	-	24 PLACES
6-10 YEARS	-	27 PLACES
ABOVE 10 YEARS	-	7 PLACES

DEPENDENT UPON FINAL NUMBER OF EACH AGE GROUP OF CHILDEN THERE COULD BE BETWEEN 8-9 STAFF.



PRELIMINARY

REV	DATE	DESCRIPTION
D	25.9.19	REAR SETBACK AMENDED
C	28.8.19	POSSIBLE STAFF NUMBERS ADDED
B	7.8.19	PROBABLE ACCOMODATION AGE MAKEUP ADDED
A	3.6.19	PRELIMINARY ISSUE

COPYRIGHT
THIS DRAWING IS COPYRIGHT AND THE PROPERTY OF JEFF FREEMAN ARCHITECTS & IT MUST NOT BE RETAINED, COPIED OR USED WITHOUT THE AUTHORITY OF JEFF FREEMAN ARCHITECTS.

DISCLAIMER
THIS DRAWING & ITS CONTENTS ARE ELECTRONICALLY GENERATED, ARE CONFIDENTIAL & MAY ONLY BE USED FOR THE PURPOSE FOR WHICH THEY WERE INTENDED. JEFF FREEMAN ARCHITECTS WILL NOT ACCEPT RESPONSIBILITY FOR ANY CONSEQUENCES ARISING FROM THE USE OF THE DRAWING FOR OTHER THAN ITS INTENDED PURPOSE OR WHERE THE DRAWING HAS BEEN ALTERED, AMENDED OR CHANGED MANUALLY OR ELECTRONICALLY BY ANY THIRD PARTY.

NOTE
THIS IS AN UN-CONTROLLED DOCUMENT ISSUED FOR PRELIMINARY PURPOSES ONLY, UNLESS THE CHECKED SECTIONS ARE SIGNED OR COMPLETED. FIGURE DIMENSIONS TAKE PRECEDENCE OVER SCALED. DO NOT SCALE REDUCED SIZE DRAWINGS. VERIFY DIMENSIONS PRIOR TO COMMENCING ANY ON-SITE OR OFF-SITE WORKS OR FABRICATION. # IN DOUBT - ASK.



NEW CHILDCARE FACILITY
AT LOT 179
EAST ROAD HOCKING

SCHMATIC CHILDCARE CALCULATION LAYOUT

DRAWN	JF	REDUCED
CHECKED		
APPROVED		
SCALE 1:100 A1	DATE MAY 19	DRAWING No.
JOB No.	FILE No.	SK-02 D



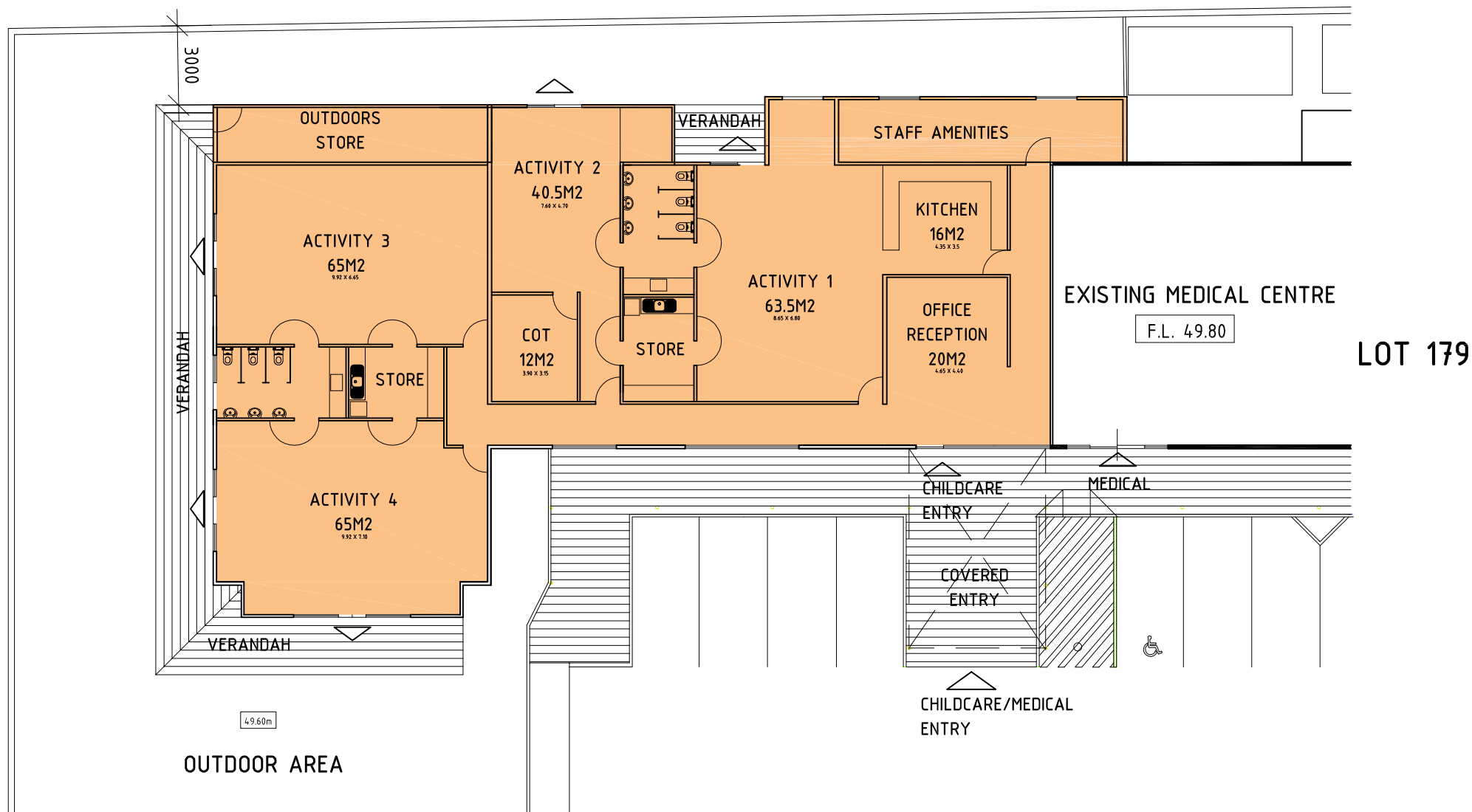
SOUTH ELEVATION (EAST ROAD)

END ELEVATION (WEST)

CHILD CARE ENTRY

MEDICAL ENTRY

NORTH ELEVATION (REAR)



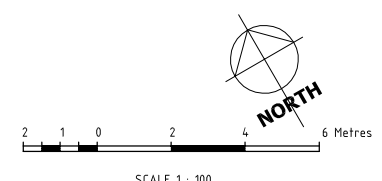
LOT 179

EXISTING MEDICAL CENTRE

F.L. 49.80

49.60m

OUTDOOR AREA



PRELIMINARY

REV	DATE	DESCRIPTION
C	25.9.19	REAR BUILDING SETBACK AMENDED
B	7.8.19	SIGN ZONES ADDED TO ELEVATIONS
A	3.6.19	PRELIMINARY ISSUE

COPYRIGHT
THIS DRAWING IS COPYRIGHT AND THE PROPERTY OF JEFF FREEMAN ARCHITECTS & IT MUST NOT BE RETAINED, COPIED OR USED WITHOUT THE AUTHORITY OF JEFF FREEMAN ARCHITECTS.

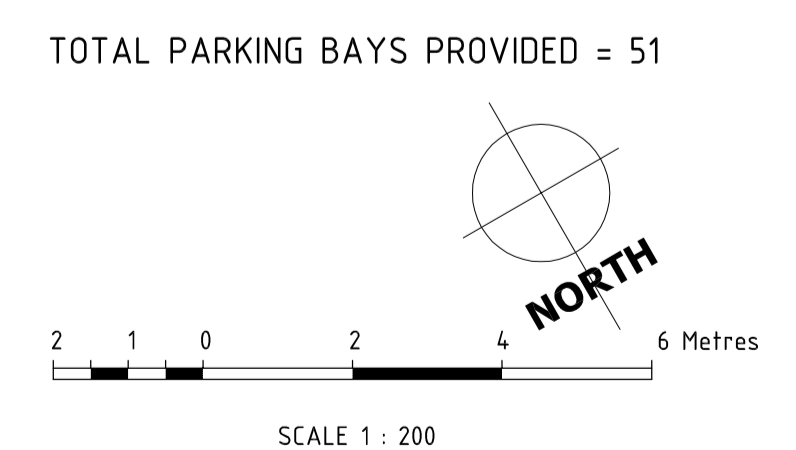
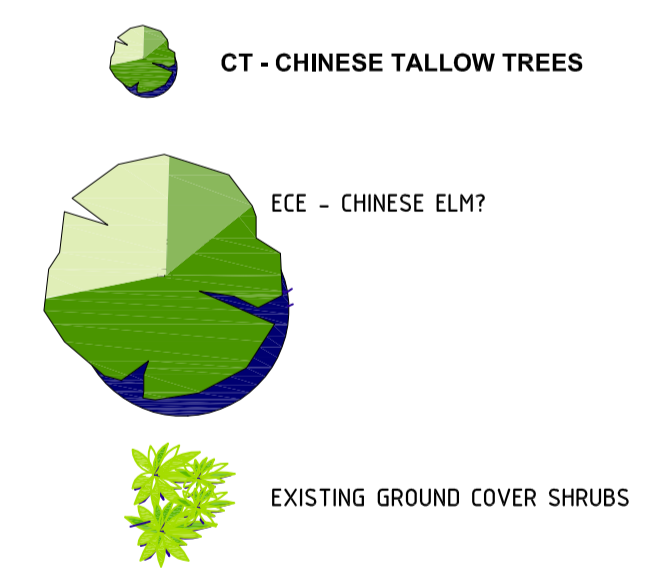
DISCLAIMER
THIS DRAWING & ITS CONTENTS ARE ELECTRONICALLY GENERATED, ARE CONFIDENTIAL & MAY ONLY BE USED FOR THE PURPOSE FOR WHICH THEY WERE INTENDED. JEFF FREEMAN ARCHITECTS WILL NOT ACCEPT RESPONSIBILITY FOR ANY CONSEQUENCES ARISING FROM THE USE OF THE DRAWING FOR OTHER THAN ITS INTENDED PURPOSE OR WHERE THE DRAWING HAS BEEN ALTERED, AMENDED OR CHANGED MANUALLY OR ELECTRONICALLY BY ANY THIRD PARTY.

NOTE
THIS IS AN UNCONTROLLED DOCUMENT ISSUED FOR PRELIMINARY PURPOSES ONLY, UNLESS THE CHECKED SECTIONS ARE SIGNED OR COMPLETED. FIGURE DIMENSIONS TAKE PRECEDENCE OVER SCALED, DO NOT SCALE. REDUCED SIZE DRAWINGS. VERIFY DIMENSIONS PRIOR TO COMMENCING ANY ON-SITE OR OFF-SITE WORKS OR FABRICATION. IF IN DOUBT - ASK.



NEW CHILDCARE FACILITY
TENANCY AT LOT 179
EAST ROAD HOCKING

CHILDCARE TENANCY PLANS & ELEVATIONS			
DRAWN	JF	REDUCTION	
CHECKED			
APPROVED			
SCALE 1:100 A1	DATE MAY 19	DRAWING No.	
JOB No.	FILE No.		SK-03 c



PRELIMINARY

EXISTING/PROPOSED LANDSCAPE PLAN

DRAWN	JF		
CHECKED			
APPROVED			
SCALE	1 : 200 A1	DATE	MAY 19
JOB No.		FILE No.	
			DRAWING No.
			SK-04 A

NEW CHILD CARE FACILITY
AT LOT 179
EAST ROAD HOCKING



COPYRIGHT
THIS DRAWING IS COPYRIGHT AND THE PROPERTY OF JEFF FREEMAN ARCHITECTS & IT MUST NOT BE RETAINED, COPIED OR USED WITHOUT THE AUTHORITY OF JEFF FREEMAN ARCHITECTS.

DISCLAIMER
THIS DRAWING & ITS CONTENTS ARE ELECTRONICALLY GENERATED, ARE CONFIDENTIAL & MAY ONLY BE USED FOR THE PURPOSE FOR WHICH THEY WERE INTENDED. JEFF FREEMAN ARCHITECTS WILL NOT ACCEPT RESPONSIBILITY FOR ANY CONSEQUENCES ARISING FROM THE USE OF THE DRAWING FOR OTHER THAN ITS INTENDED PURPOSE OR WHERE THE DRAWING HAS BEEN ALTERED, AMENDED OR CHANGED MANUALLY OR ELECTRONICALLY BY ANY THIRD PARTY.

NOTE
THIS IS AN UN-CONTROLLED DOCUMENT ISSUED FOR PRELIMINARY PURPOSES ONLY, UNLESS THE CHECKED SECTIONS ARE SIGNED OR COMPLETED. FIGURE DIMENSIONS TAKE PRECEDENCE OVER SCALED. DO NOT SCALE REDUCED SIZE DRAWINGS. VERIFY DIMENSIONS PRIOR TO COMMENCING ANY ON-SITE OR OFF-SITE WORKS OR FABRICATION. # IN DOUBT - ASK.

A	25.9.19	PRELIMINARY ISSUE
REV	DATE	