

BOWRA & O'DEA FUNERAL HOME, TAPPING LANDSCAPE PLAN DEVELOPMENT APPLICATION

udla

NEW IDEAS THROUGH

SHARED DESIGN-THINKING

3.0 SKETCH MASTER PLAN



LEGEND

- A** Trees to western boundary
- B** On-ground garden beds
- C** Courtyard garden area
- D** Raised planters
- E** Pedestrian connection to existing Wanneroo Rd bus stop.

Note: Requirement for 1 tree per 4 car bays.
 Total car bays = 107
 Trees required in car park = 27
 Total car park trees = 30

SOFTSCAPE = 10%
 HARDSTAND = 90%

Extent of landscape works

3.1 PLANT PALETTE

Tree Planting



NOTE: Raised Planters to be used on podium.

The use of Tuart trees provide strong edge planting to the sites western/ south-western boundary. Paperbarks are used within the carparks and as edge planting to the existing retail on the sites northern boundary.

The Crepe Myrtles provide shade and seasonal interest within the internal courtyard.



● *Eucalyptus gomphocephala*
Tuart
12-15m H x 6-8m W



● *Lagerstroemia sp.*
Crepe Myrtle 'Natchez'
3-5m H x 3-4m W



● *Melaleuca quinquenervia*
Paperbark
4-8m H x 3-6m W

Garden Bed Planting



NOTE: Raised Planters to be used on podium.

Garden beds are proposed to be mass planted with a range of native grasses and sedges to provide a coherent approach to the garden beds and raised planters and reflect similar plant species to the adjacent Lake Joondalup. The selection of the species has been made on being waterwise, low maintenance, and suitable for the site constraints.



Ficinia nodosa
Knobby Club Rush
0.6m H x 0.6m W



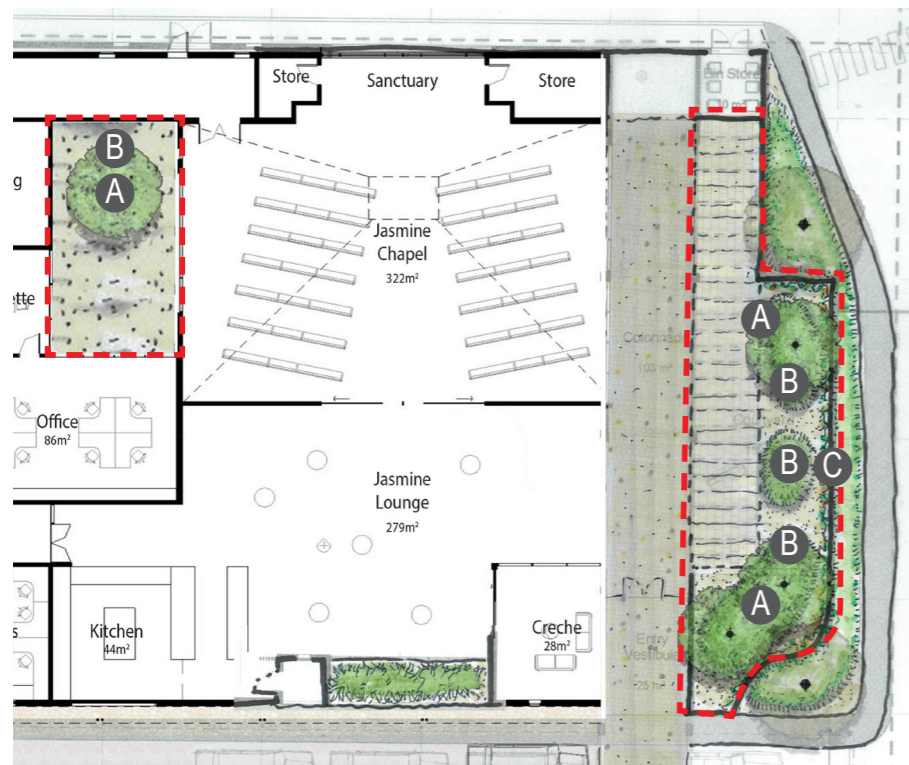
Lomandra longifolia
'Tanika'
0.6m H x 0.6m W



Aspidistra elatior
Cast Iron Plant
0.6m H x 0.6m W

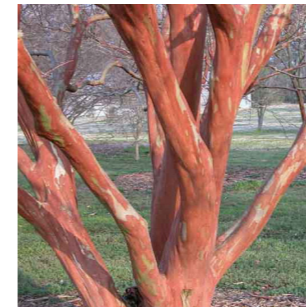
Note: All trees and garden beds to be irrigated, mulched with 100mm thick organic mulch, with a native slow release fertiliser. Garden beds to be planted at a rate of 4 plants per sqm.

3.2 PLANT & MATERIAL PALETTE



DETAIL SKETCH PLAN

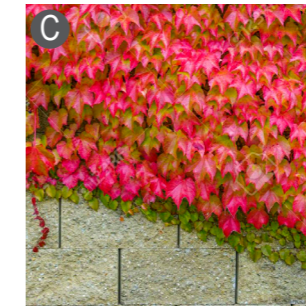
The Crepe Myrtles provide shade, seasonality and visual interest to the internal courtyard space. The images below (left to right) show the tree in full flower (summer), foliage change (autumn/winter) and the highly ornamental bark.




Lagerstroemia sp.
Crepe Myrtle 'Natchez'
3-5m H x 3-4m W



Royena lucida
African Snowdrop Bush
0.5-1m H x 0.5-1m W



Parthenocissus tricuspidata
Boston Ivy
2-3m H x 0.1-0.2m W

 Internal courtyard

Precedent image illustrates design intent to use a restrained plant palette, gravel. Boston Ivy to be used to carpet the proposed wall on the northern side of the courtyard to provide seasonal interest.

3.3 MATERIALS SELECTION

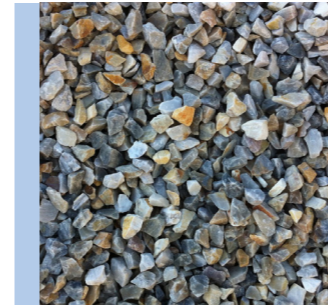


NOTE: Carpark by Civil Engineering.

The use of exposed aggregate material for the carpark walkways provides a clear access route from the carpark to the building. The material is suitable to meet AS 1428.1 and is non-slip and suitable for the location.



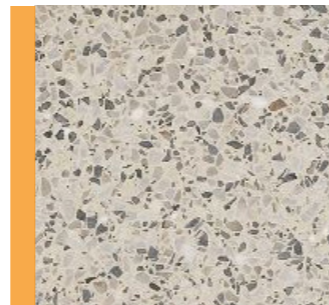
Exposed Aggregate
Holcim 'Spinifex'



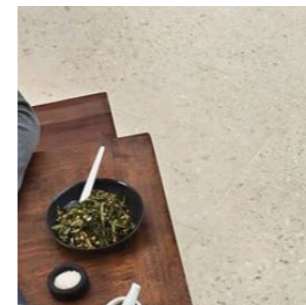
Gravel Mulch
Rainbow Stone to internal
garden beds.



Example: Raised concrete planter.
Min. soil depth 400mm



Large Format Unit Paving
UrbanStone-
Engineered stone.



Example of large
Format Unit Paving