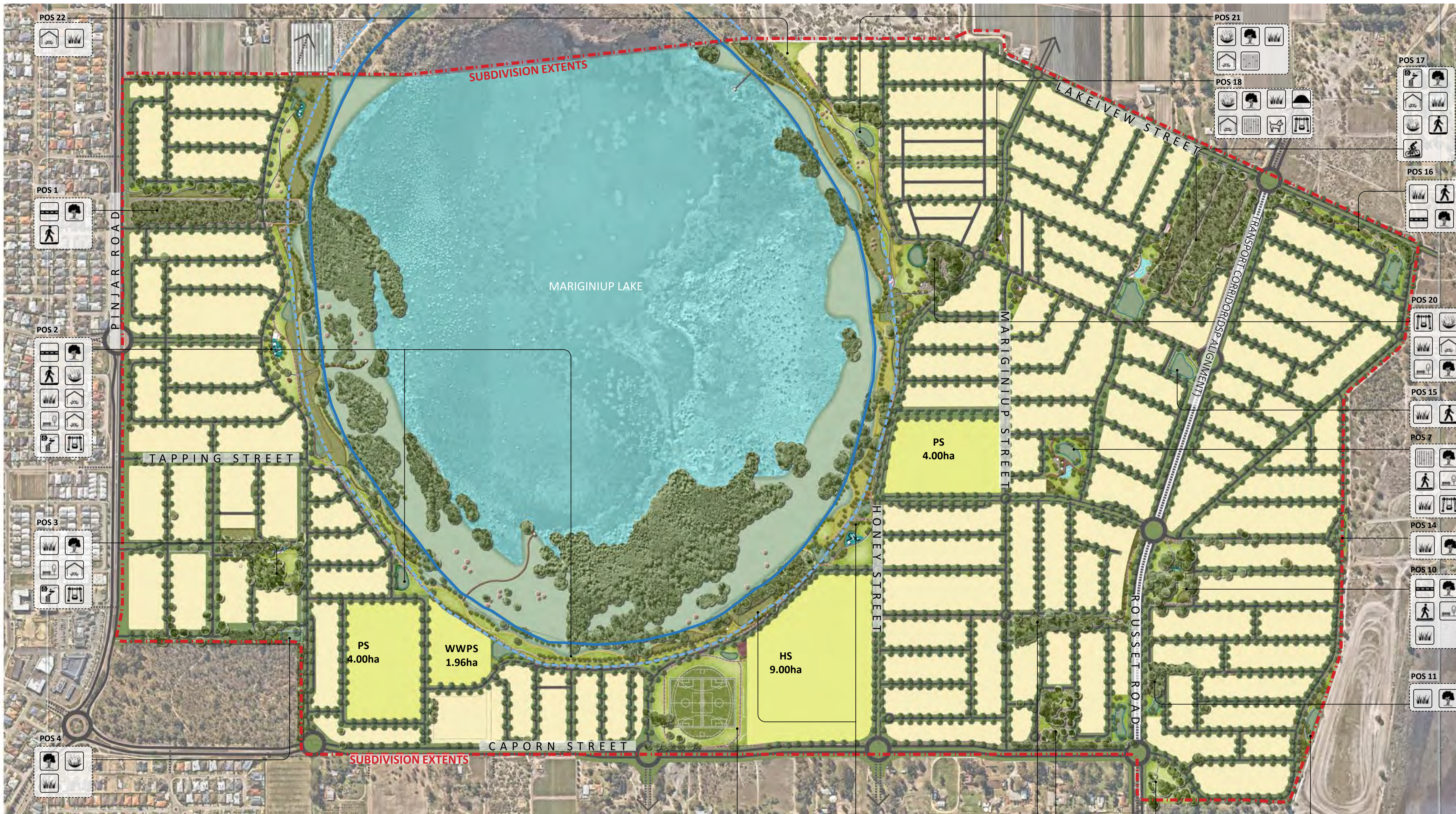


APPENDIX 6:
LANDSCAPE MASTERPLAN



POS SPATIAL ACTIVITY PLAN

LEGEND					
	EXISTING TREES		BASIN & SWALES		PLAYGROUND
	OPEN TURF		DUAL USE PATH		PARK SHELTER
	TURF MOUND		PLAYING FIELD		BBQ
	CRUSHED LIMESTONE TRACK		CARPARK		PICNIC SETTING
	DOG PARK		COMPOSITE TIMBER DECKING		DRINK FOUNTAIN
	BMX BIKE TRACK		EXTENT OF WORK		BENCH SEAT
			CCW		CCW BUFFER

POS 5

POS 6

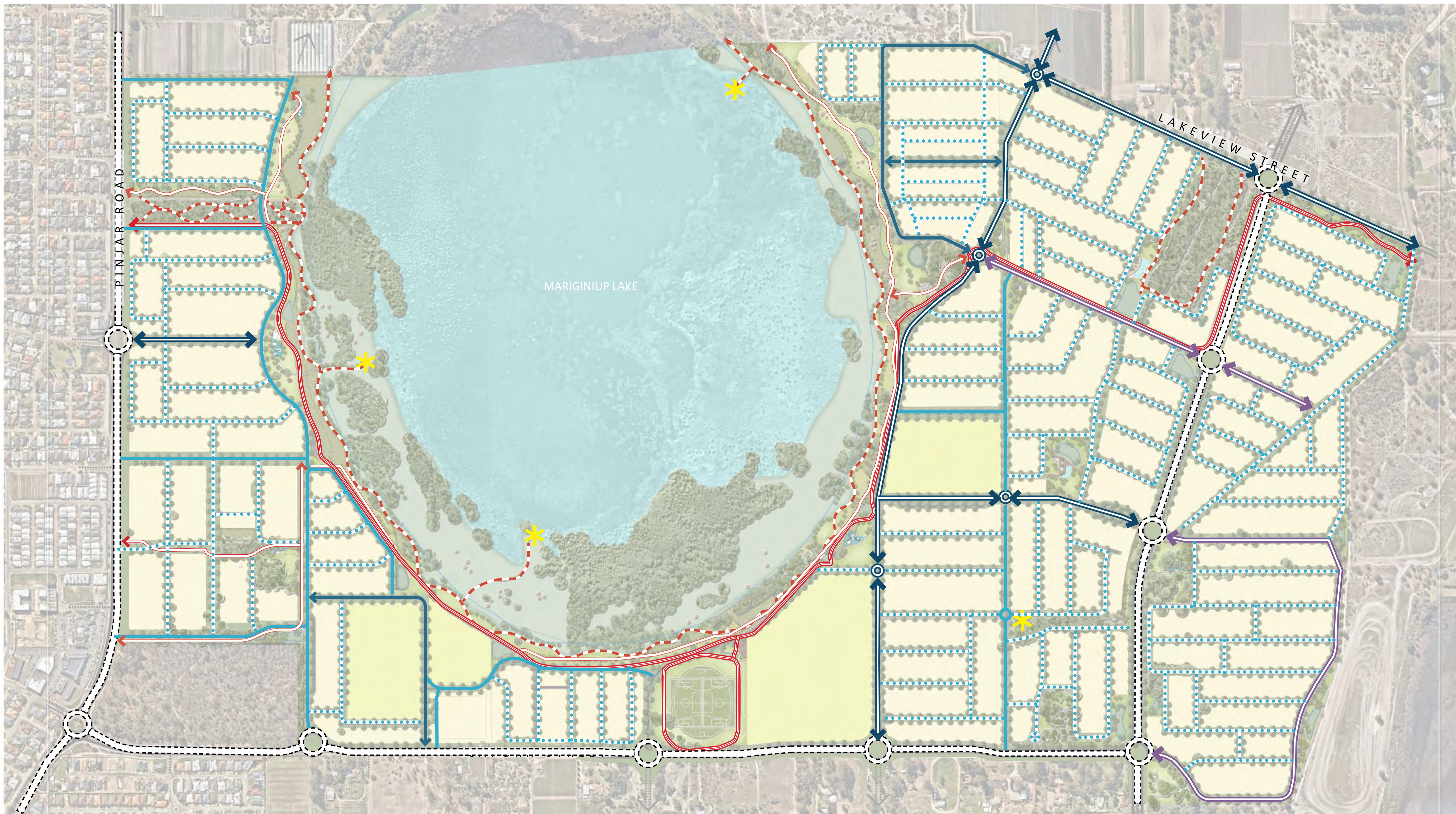
POS 8

POS 9

POS 12

POS 13

DRAFT



CIRCULATION PLAN

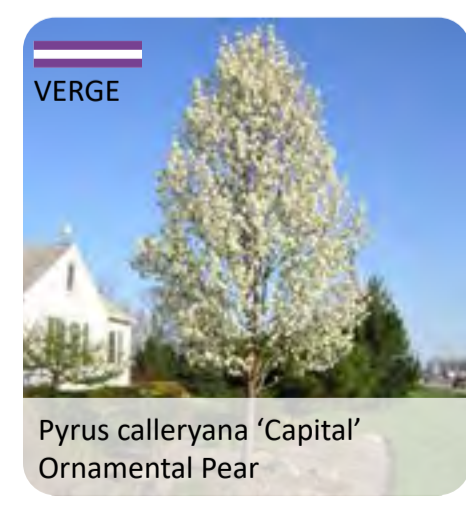
LEGEND			
	Dual Use Path		Crushed limestone/trail
	Concrete footpath connection		Access Street A (24.4M)
	Neighbourhood Connector A		Access Street B (20.0M)
	Neighbourhood Connector B		Access Street C (17.9M)
	Access Street D		Transit Corridor (DSP Alignment)
	Existing Road Network		Proposed Roundabout Upgrade
	Shelter/Lookout Platform		

DRAFT

© THIS DRAWING CAN NOT BE PUBLISHED OR DISPLAYED WITHOUT THE WRITTEN PERMISSION OF THE CLIENT AND AUTHOR, AND IS ISSUED FOR INFORMATION PURPOSES ONLY AND MAY ALTER WITHOUT NOTIFICATION.



LANDSCAPE MASTERPLAN



Pyrus calleryana 'Capital'
Ornamental Pear

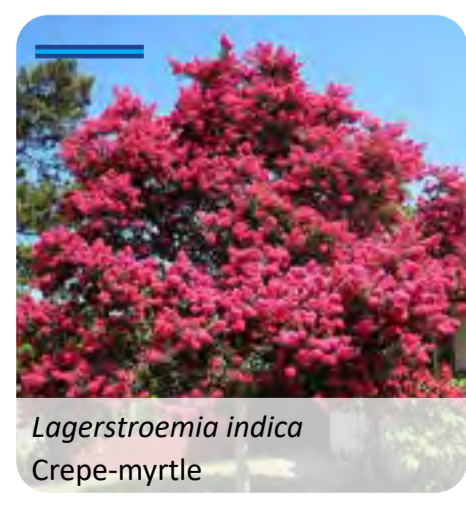
NEIGHBOURHOOD CONNECTOR



Eucalyptus gomphocephala
Tuart

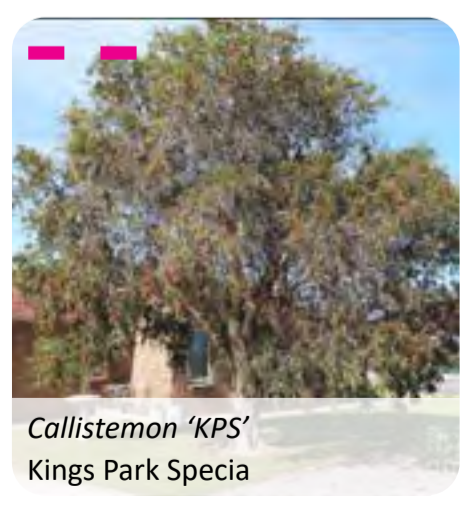


Melaleuca leucadendron
Weeping Paperbark

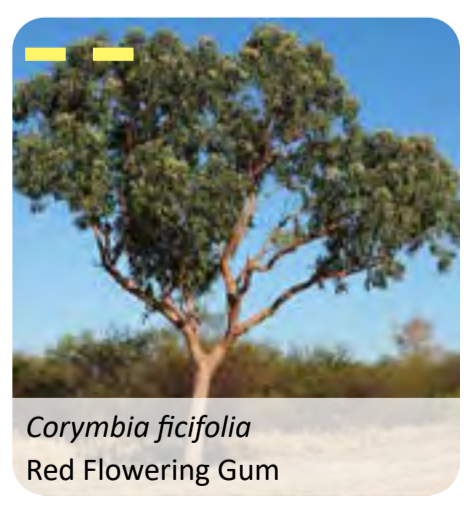


Lagerstroemia indica
Crepe-myrtle

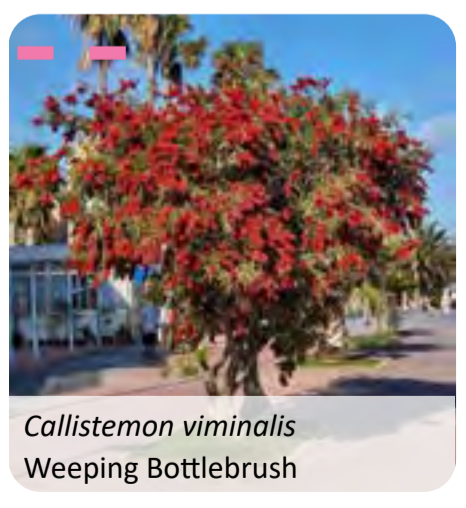
KEY STREET



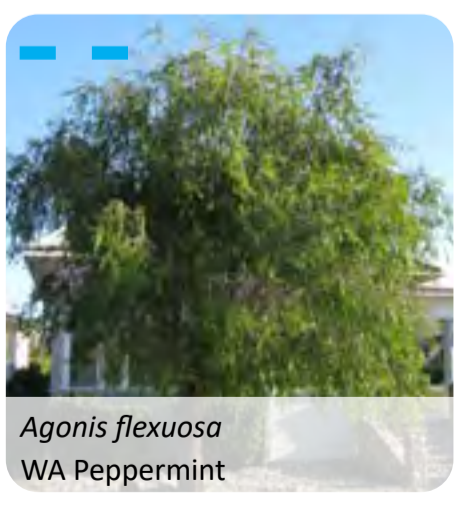
Callistemon 'KPS'
Kings Park Specia



Corymbia ficifolia
Red Flowering Gum



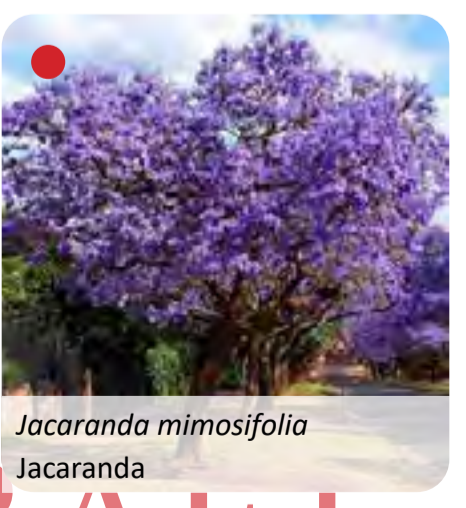
Callistemon viminalis
Weeping Bottlebrush



Agonis flexuosa
WA Peppermint



Eucalyptus torquata
Coral Gum



Jacaranda mimosifolia
Jacaranda

DRAFT



POS 1 CONCEPT



POS 1 TYPOLOGY

- Conservation POS

SIZE

- 2.63 ha including P&R Reserve

POS 1 CONCEPT

- D.U.P on southern side of the POS to provide east-west connection to CCW area
- Crushed limestone track meandering between existing vegetation to provide approximately 540m walk trail to CCW area
- Existing vegetation to be retained and protected
- Shrub revegetation under existing vegetation
- Drainage basin as per LWMS

FUNCTIONS / MATERIALS

- Passive turf to provide access to wetlands
- Dual use path connections
- Open turf area for outdoor activity

ENVIRONMENTAL CONSIDERATIONS

- Significant existing trees to be retained
- Carnaby black cockatoo habitat
- Low fuel planting to minimise the threat area intensity for bushfire prone areas
- Water-wise native planting and planting
- Source local materials where possible to minimise transport requirements and provide local employment.
- Consider long-term maintenance requirements.
- Provide a buffer to the adjacent road



LANDSCAPE MASTERPLAN

LEGEND											
	MARIGINIUP LAKE		LOT		D.U.P		CRUSHED LIMESTONE PATH		STREET TREES		EXTENT OF WORK
	CCW REVEGETATION PLANTING		TURF		FOOTPATH		BOARDWALK		PROPOSED TREES		CCW
	SHRUB PLANTING		MULCH ONLY		EXISTING TREES		CCW BUFFER		FEATURE TREES		
	LOW FUEL PLANTING		BASIN								

DRAFT



POS 2 TYPOLOGY

- Nature POS
- SIZE**
- 2.60 ha

FUNCTIONS / MATERIALS

- Passive turf to provide access to wetlands
- Timber boardwalk to provide good wetland view to wetland flora and fauna
- Dual use path connections
- Open turf area for outdoor activity
- Commercial- Cafe

POS 2 CONCEPT

- D.U.P connection along the CCW boundary
- Crushed limestone track meandering between existing vegetation to provide approximately 540m walk trail to CCW area
- Boardwalk and decking to provide good view to the wetlands
- Large open turf area to provide passive views to the wetland
- Existing vegetation to be retained and protected
- Shrub revegetation under existing vegetation
- Junior & toddler playground

ENVIRONMENTAL CONSIDERATIONS

- Significant existing trees to be retained
- Carnaby black cockatoo habitat
- Low fuel planting to minimise the threat area intensity for bushfire
- Water-wise native planting and planting
- Consider long-term maintenance requirements
- Crushed limestone path in CCW buffer area to avoid hardpave
- Provide a buffer to the adjacent road

DRAINAGE LEGEND - CATCHMENT B

FIRST 15mm BRA DETAILS

Depth(m):	0.5
Base Area(m ²):	564
Top Area(mAHD):	885
Volume(m ³):	359
Slope:	1:6

DRAINAGE LEGEND - CATCHMENT C

FIRST 15mm BRA DETAILS

Depth(m):	0.5
Base Area(m ²):	444
Top Area(mAHD):	733
Volume(m ³):	291
Slope:	1:6



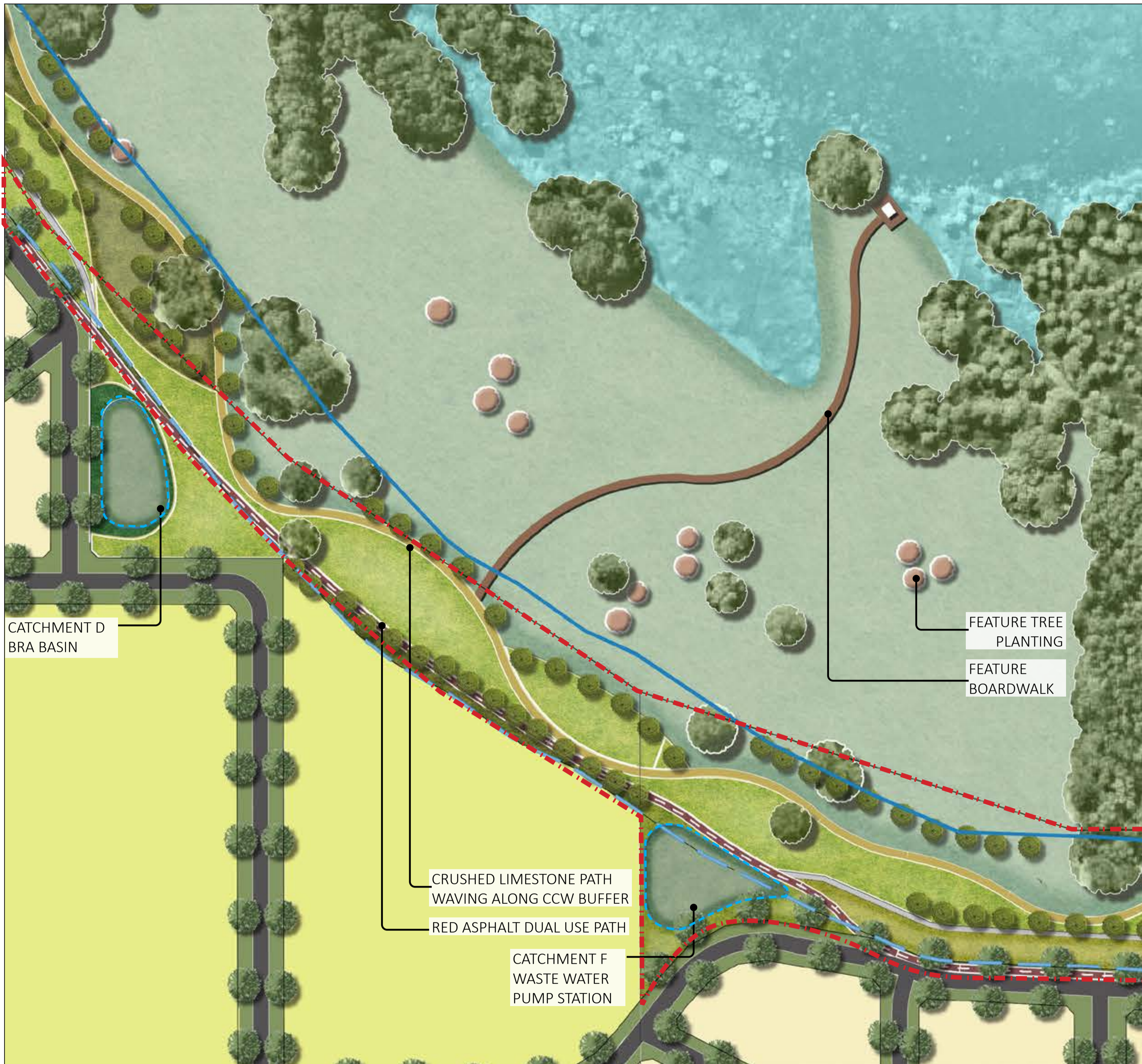
POS 2 CONCEPT

LANDSCAPE MASTERPLAN

LEGEND

MARIGINIUP LAKE	LOT	D.U.P	STREET TREES	EXTENT OF WORK
CCW REVEGETATION PLANTING	TURF	CRUSHED LIMESTONE PATH	PROPOSED TREES	CCW
SHRUB PLANTING	MULCH ONLY	FOOTPATH	FEATURE TREES	CCW BUFFER
LOW FUEL PLANTING	BASIN	BOARDWALK	EXISTING TREES	

DRAFT



POS 2 TYPOLOGY

- Nature POS

SIZE

- 4.2 ha

POS 2 CONCEPT

- D.U.P connection along the CCW boundary
- Crushed limestone track meandering between existing vegetation to provide approximately 540m walk trail to CCW area
- Boardwalk/shelter offering key vantage point across Mariginiup Lake
- Large open turf area to provide passive views to the wetland
- Existing vegetation to be retained and protected
- Shrub revegetation under existing vegetation



DRAINAGE LEGEND - CATCHMENT D

FIRST 15mm BRA DETAILS

Depth(m):	0.5
Base Area(m ²):	686
Top Area(mAHD):	1036
Volume(m ³):	428
Slope:	1:6

DRAINAGE LEGEND - CATCHMENT F

FIRST 15mm BRA DETAILS

Depth(m):	0.5
Bas Area(m ²):	898
Top Area(mAHD):	1294
Volume(m ³):	545
Slope:	1:6

ENVIRONMENTAL CONSIDERATIONS

- Significant existing trees to be retained
- Carnaby black cockatoo habitat
- Low fuel planting to minimise the threat area intensity for bushfire
- Water-wise native planting and planting
- Consider long-term maintenance requirements
- Crushed limestone path in CCW buffer area to avoid hardpave
- Provide a buffer to the adjacent road

FUNCTIONS / MATERIALS

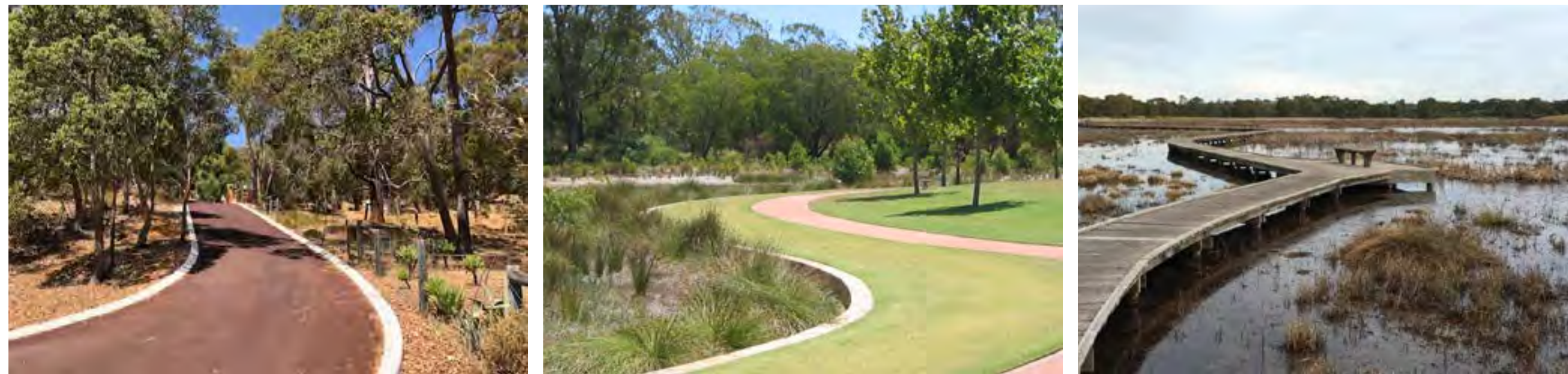
- Passive turf to provide access to wetlands
- Timber boardwalk to provide good wetland view to wetland flora and fauna
- Dual use path connections
- Open turf area for outdoor activity

POS 2 CONCEPT

LANDSCAPE MASTERPLAN

LEGEND

MARIGINIUP LAKE	LOT	D.U.P	STREET TREES	EXTENT OF WORK
CCW REVEGETATION PLANTING	TURF	CRUSHED LIMESTONE PATH	PROPOSED TREES	CCW
SHRUB PLANTING	MULCH ONLY	FOOTPATH	FEATURE TREES	CCW BUFFER
LOW FUEL PLANTING	BASIN	BOARDWALK	EXISTING TREES	



DRAFT



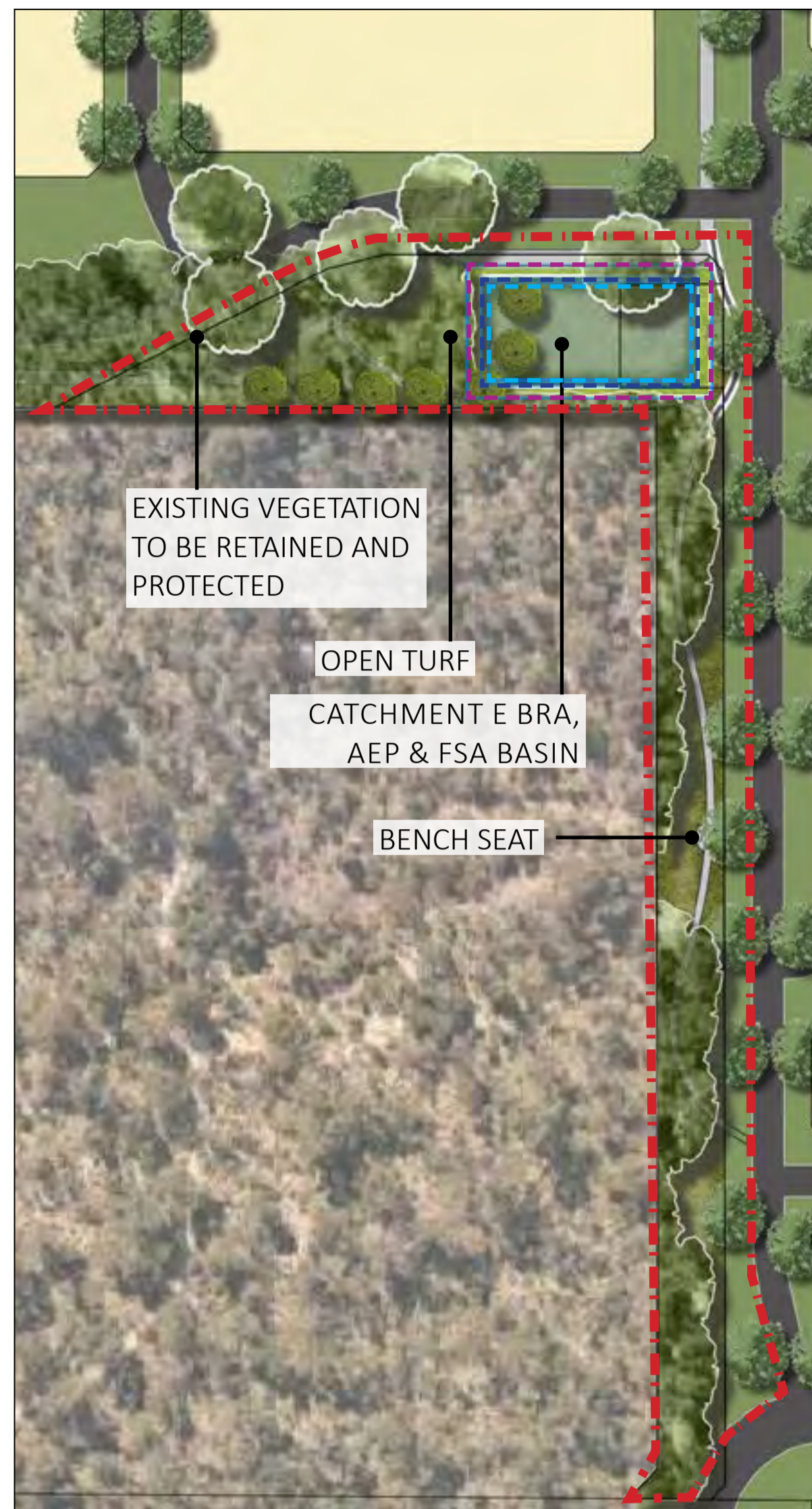
POS 3 CONCEPT
 EXISTING VEGETATION TO BE RETAINED PROTECTED
 OPEN TURF
 SHELTER AND PICNIC SETTING ON COLOUR CONCRETE HARDSTAND
 PLAYGROUND

POS 3 TYPOLOGY
 • Local POS
SIZE
 • 0.79 ha including Verge

POS 3 CONCEPT
 • Open turf to provide activity area to residents
 • Provide a pedestrian link through estate
 • Existing vegetation to be retained and protected
 • Shrub revegetation under existing vegetation
 • Nature playground
 • Picnic area with shelter and picnic setting
 • Shaded trees to be planted along the throughout path

FUNCTIONS / MATERIALS
 • Significant existing trees to be retained
 • Open turf area for outdoor activity
 • Shelter and picnic settings
 • All-age playground with shade sails
 • Connected path to open space perimeter, with connections to the broader path network.

ENVIRONMENTAL CONSIDERATIONS
 • Significant existing trees to be retained
 • Carnaby black cockatoo habitat
 • Low fuel planting to minimise the threat area intensity for bush fire prone areas
 • Water-wise native planting and planting
 • Consider long-term maintenance requirements.
 • Provide a buffer to the adjacent road



POS 4 CONCEPT

EXISTING VEGETATION TO BE RETAINED AND PROTECTED

OPEN TURF
 CATCHMENT E BRA, AEP & FSA BASIN
 BENCH SEAT

POS 4 TYPOLOGY
 • Nature POS
SIZE
 • 0.58 ha including Verge

POS 4 CONCEPT
 • Open turf to provide activity area to residents
 • Provide a pedestrian link through estate
 • Existing vegetation to be retained and protected
 • Bench seat to provide rest point
 • Provide buffer between road and existing bushland

FUNCTIONS / MATERIALS
 • Significant existing trees to be retained
 • Open turf area for outdoor activity
 • Seating and passive surveillance
 • Nature play
 • Throughout path to connect to provide pedestrian through estate

ENVIRONMENTAL CONSIDERATIONS
 • Significant existing trees to be retained
 • Carnaby black cockatoo habitat
 • Water-wise native planting and planting
 • Provide a buffer to the adjacent road and existing bushland area

DRAINAGE LEGEND - CATCHMENT E

FISRT 15MM BRA DETAILS	
Depth(m):	0.55
Top Area(mAHD):	762
Volume(m³)	324
Slope	1:6
20% AEP STORAGE	
Depth(m):	0.72
Top Area(mAHD):	879
Volume(m³)	467
Slope	1:6
1%FSA STORAGE	
Depth(m):	1.18
Top Area(mAHD):	1250
Volume(m³)	945
Slope	1:6



LOCATION PLAN

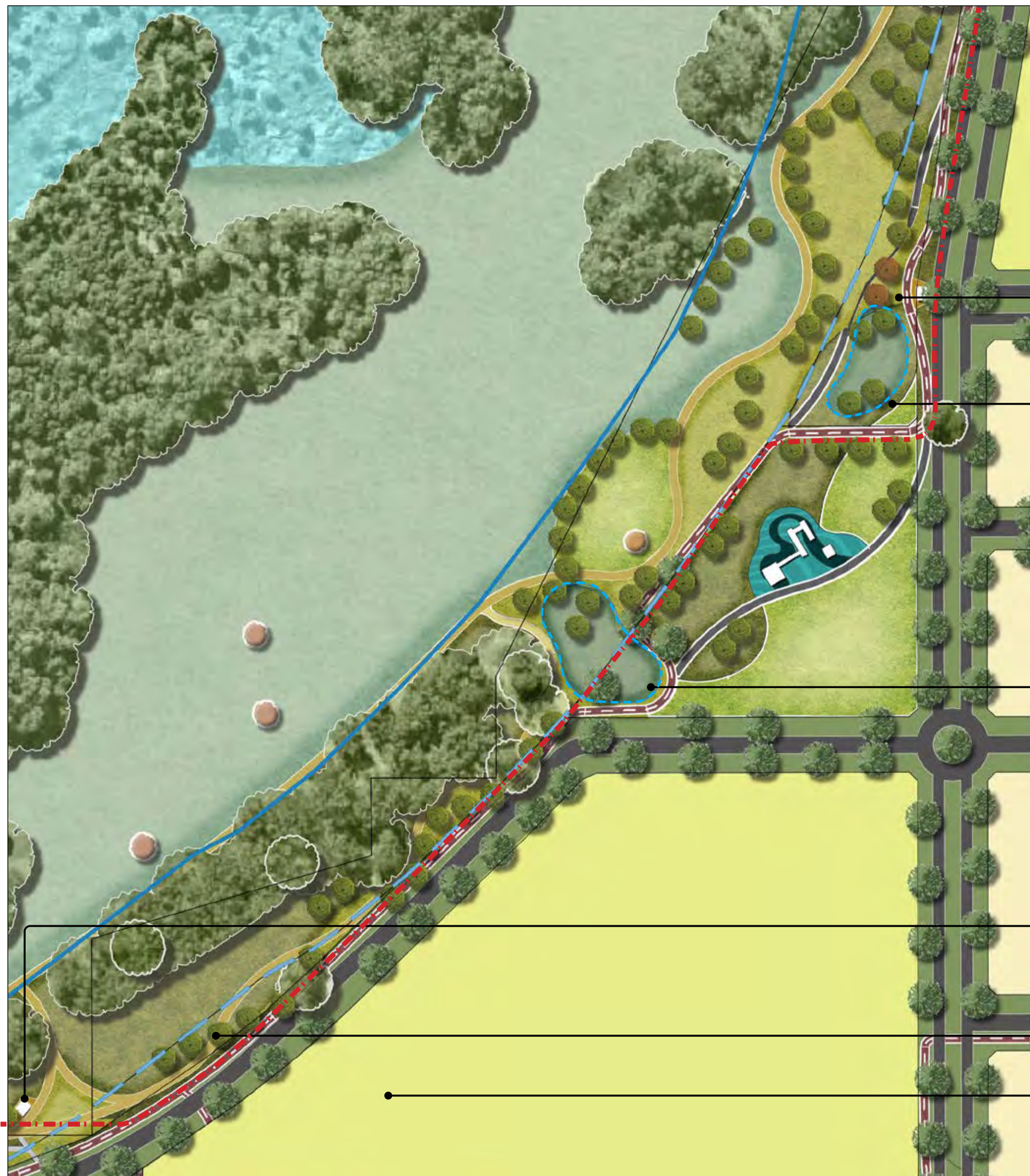


LANDSCAPE MASTERPLAN

LEGEND

MARIGINIUP LAKE	LOT	D.U.P	STREET TREES	EXTENT OF WORK
CCW REVEGETATION PLANTING	TURF	CRUSHED LIMESTONE PATH	PROPOSED TREES	CCW
SHRUB PLANTING	MULCH ONLY	FOOTPATH	FEATURE TREES	CCW BUFFER
LOW FUEL PLANTING	BASIN	BOARDWALK	EXISTING TREES	

DRAFT



POS 6 CONCEPT

SHELTER WITH PICNIC SETTING

CATCHMENT H BRA BASIN

CATCHMENT S BRA BASIN

SHELTER WITH PICNIC SETTING

CRUSHED LIMESTONE FOOTPATH

HIGH SCHOOL

POS 6 TYPOLOGY

- Nature POS
- SIZE**
- 3.16 ha

POS 6 CONCEPT

- Dual use path to provide cyclists and pedestrian with connection to wetland area
- Provide buffer from road to CCW area
- Significant trees to be retained where possible
- Shrub revegetation under existing vegetation
- Picnic area with shelter and picnic setting
- Open turf to provide activity area to residents
- Storage basin as per with LWMS design

FUNCTIONS / MATERIALS

- Significant existing trees to be retained
- Open turf area for outdoor activity
- Shelter and picnic settings
- Connected path to open space perimeter, with connections to the broader path network.
- Limestone path weaving along CCW buffer

ENVIRONMENTAL CONSIDERATIONS

- Significant existing trees to be retained
- Carnaby black cockatoo habitat
- Water-wise native planting and planting
- Consider long-term maintenance requirements.
- Provide a buffer to the adjacent road

DRAINAGE LEGEND - CATCHMENT S

FIRST 15mm BRA DETAILS

Depth(m):	0.5
Base Area(m ²):	780
Top Area (mAHD):	1151
Volume(m ³):	480
Slope	1:6

DRAINAGE LEGEND - CATCHMENT H

FIRST 15mm BRA DETAILS

Depth(m):	0.5
Base Area(m ²):	441
Top Area (mAHD):	729
Volume(m ³):	290
Slope	1:6

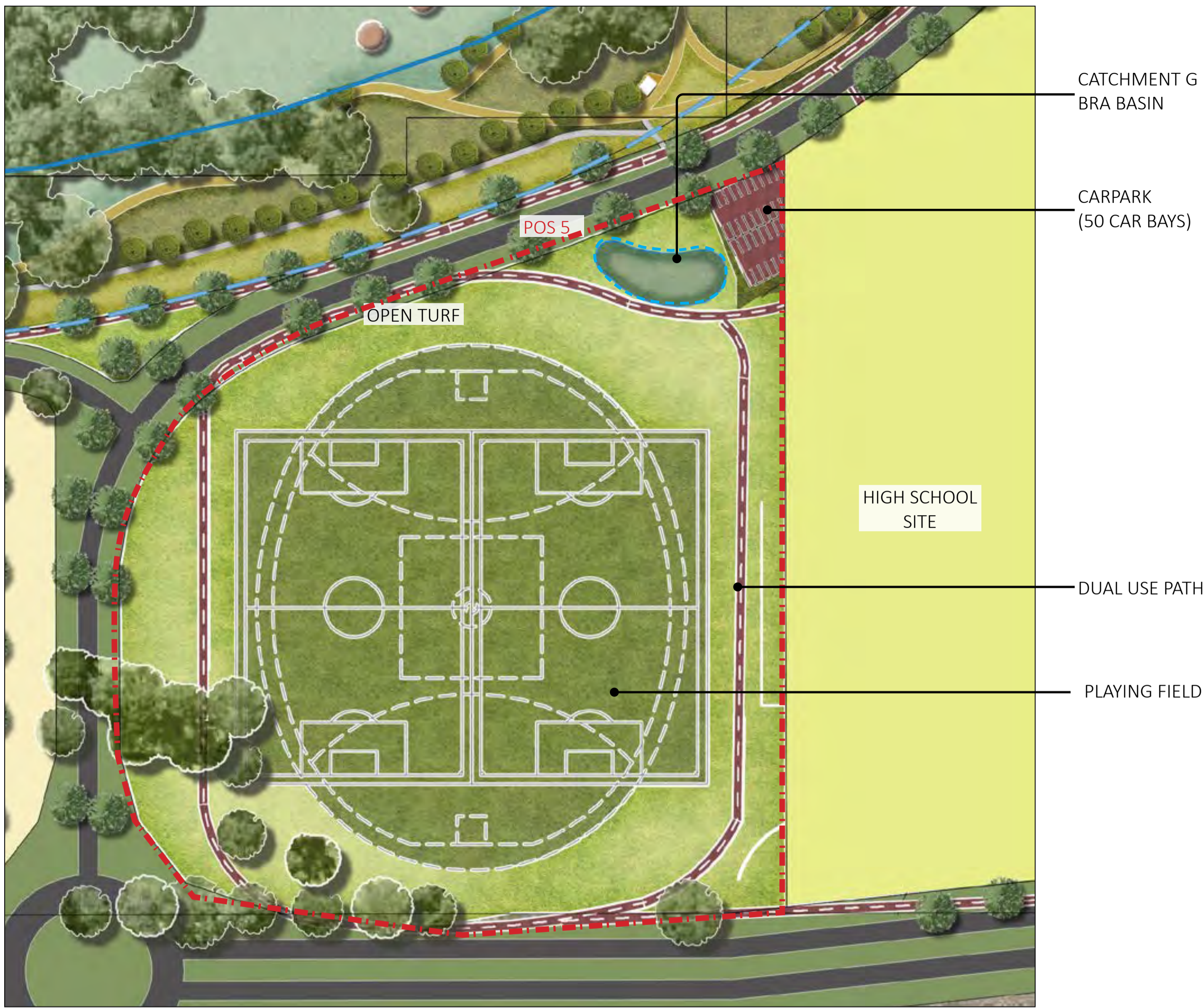


LANDSCAPE MASTERPLAN

LEGEND

MARIGINIUUP LAKE	LOT	D.U.P	STREET TREES	EXTENT OF WORK
CCW REVEGETATION PLANTING	TURF	CRUSHED LIMESTONE PATH	PROPOSED TREES	CCW
SHRUB PLANTING	MULCH ONLY	FOOTPATH	FEATURE TREES	CCW BUFFER
LOW FUEL PLANTING	BASIN	BOARDWALK	EXISTING TREES	

DRAFT



POS 5 CONCEPT

POS 5 TYPOLOGY

- Sports POS

SIZE

- 4.00 ha

POS 5 CONCEPT

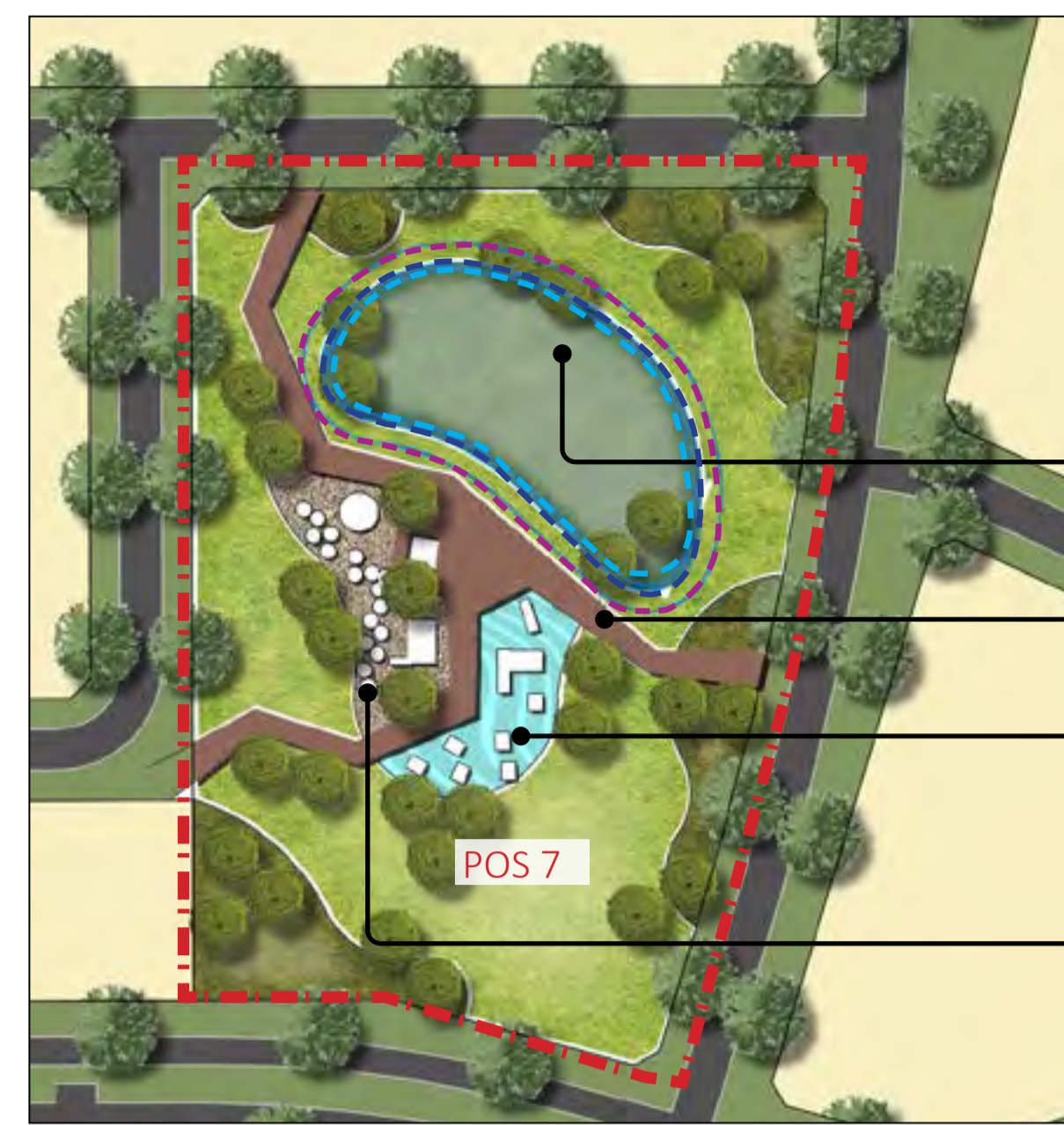
- Playing field providing activity area for residents
- Multi-goal half court to provide basketball hoop, hit-up wall and opportunity of murals
- Dual use path to provide cyclists and pedestrian with connection to wetland area
- Existing vegetation to be retained to provide immediate amenity shade
- Storage basin as per with LWMS design

FUNCTIONS / MATERIALS

- Significant existing trees to be retained
- Playfield including 1x AFL Senior oval and 2x Cricket pitch
- Open turf area and playspace for outdoor activity
- Shelter and picnic settings
- Path connections to the broader path network.

ENVIRONMENTAL CONSIDERATIONS

- Significant existing trees to be retained where possible
- Carnaby black cockatoo habitat
- Water-wise native planting and planting
- Consider long-term maintenance requirements.
- Source local materials where possible to minimise transport requirements and provide local employment.



POS 7 CONCEPT

POS 7 TYPOLOGY

- Nature POS

SIZE

- 1.07 ha

POS 7 CONCEPT

- All age playground play space
- Fitness area to provide exercise space
- Shelter with picnic settings with BBQ area
- Storage basin as per with LWMS design
- Pedestrian boardwalk which connects to wetland

FUNCTIONS / MATERIALS

- Open turf area and playspace for outdoor activity
- Shelter and picnic settings
- Boardwalk to provide nature trail
- Path connections to the broader path network.

ENVIRONMENTAL CONSIDERATIONS

- Consider long-term maintenance requirements.
- Source local materials where possible to minimise transport requirements and provide local employment.

DRAINAGE LEGEND - CATCHMENT G

FIRST 15mm BRA DETAILS

Depth(m):	0.5
Base Area(m ²):	333
Top Area (mAHD):	588
Volume(m ³):	227
Slope	1:6



DRAINAGE LEGEND - CATCHMENT N

FIRST 15MM BRA DETAILS

Depth(m):	0.49
Top Area(mAHD):	1435
Volume(m ³):	598
Slope	1:6

20% AEP STORAGE

Depth(m):	0.68
Top Area(mAHD):	1613
Volume(m ³):	892
Slope	1:6

1%FSA STORAGE

Depth(m):	1.19
Top Area(mAHD):	2153
Volume(m ³):	1853
Slope	1:6

LANDSCAPE MASTERPLAN

LEGEND

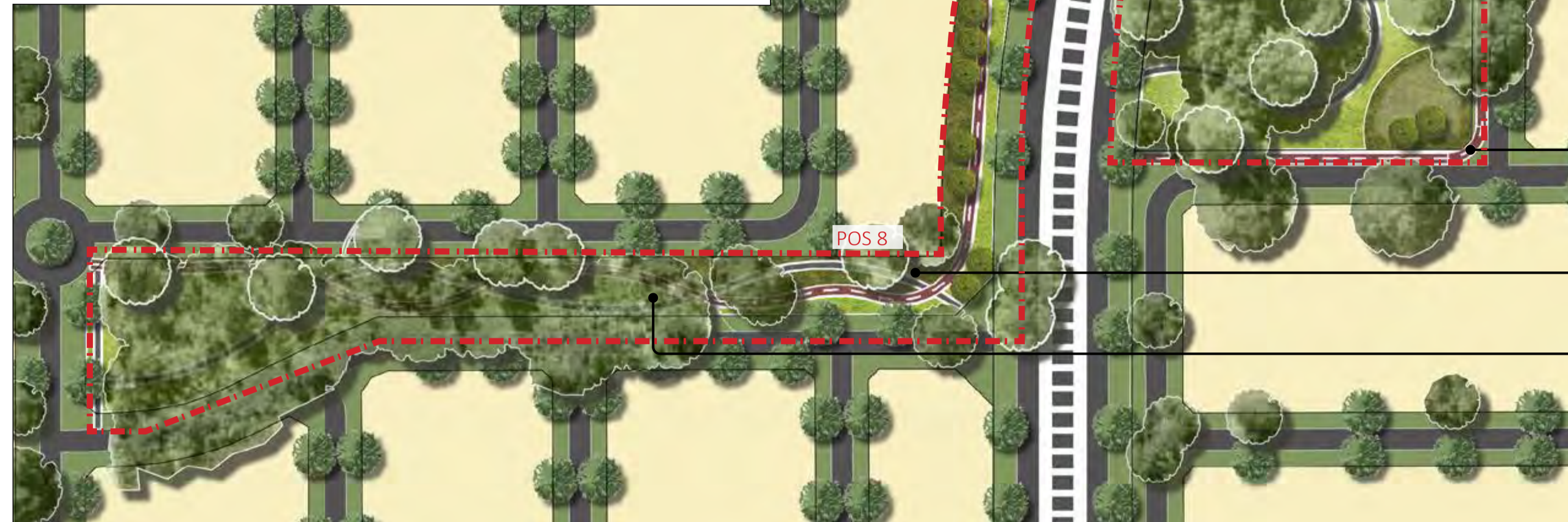
MARIGINIUP LAKE	LOT	D.U.P	STREET TREES	EXTENT OF WORK
CCW REVEGETATION PLANTING	TURF	CRUSHED LIMESTONE PATH	PROPOSED TREES	CCW
SHRUB PLANTING	MULCH ONLY	FOOTPATH	FEATURE TREES	CCW BUFFER
LOW FUEL PLANTING	BASIN	BOARDWALK	EXISTING TREES	



DRAFT



LOCATION PLAN



POS 8 & 10 CONCEPT

- PLAYGROUND
- SHELTER WITH PICNIC SETTING
- DUAL USED PATH
- BENCH SEATING
- EXISTING TREES TO BE RETAINED

POS 8 TYPOLOGY

- LINEAR POS
- SIZE**
- 0.86 ha + Verge

POS 10 TYPOLOGY

- NATURE POS
- SIZE**
- 1.15 ha + Verge

POS 8 & 10 CONCEPT

- Dual use path to provide cyclists and pedestrian with connection to wetland area
- Provide a pedestrian link through estate
- Existing vegetation to be retained
- Open turf to provide activity area to residents

FUNCTIONS / MATERIALS

- Significant existing trees to be retained
- Open turf area for outdoor activity
- Bench seat
- Connected path to open space perimeter, with connections to the broader path network.
- Revegetation planting to existing vegetation area

ENVIRONMENTAL CONSIDERATIONS

- Large area of existing vegetations to be retained and protected for local flora and fauna habitat
- Revegetation planting to existing tree area
- Water-wise native planting and planting to basin
- Consider long-term maintenance requirements.
- West-east ecological corridor connecting to CCW area also improve the walkability throughout the estate



LANDSCAPE MASTERPLAN

LEGEND									
	MARIGINIUP LAKE		LOT		D.U.P		STREET TREES		EXTENT OF WORK
	CCW REVEGETATION PLANTING		TURF		CRUSHED LIMESTONE PATH		PROPOSED TREES		CCW
	SHRUB PLANTING		MULCH ONLY		FOOTPATH		FEATURE TREES		CCW BUFFER
	LOW FUEL PLANTING		BASIN		BOARDWALK		EXISTING TREES		

DRAFT



POS 9 & 11 CONCEPT

POS TYPOLOGY POS 9

Neighbourhood POS

SIZE

- 1.37 ha + Verge

POS 9 CONCEPT

- Provide great connections to broader network
- Nature playground with ornamental plantings
- Significant existing trees to be retained
- Revegetation to be implemented in existing tree area to enhance local flora and fauna habitat
- Basin as per LWMS design
- Footpath connections to improve the connectivity and walkability & cyclability of west-east ecological corridor to wetlands
- Passive turf to provide open space for activities

FUNCTIONS / MATERIALS

- Footpath connection to the broader path network.
- Bench seat to provide rest point
- Shelter and picnic settings to provide BBQ opportunity
- Nature playground for kids
- Connected open turf areas to provide passive views to wetlands
- Low fuel planting to minimise the threat of bushfire attack to adjacent residents

DRAINAGE LEGEND - CATCHMENT O

FISRT 15MM BRA DETAILS

Depth(m):	0.50
Top Area(mAHD):	1369
Volume(m ³):	576
Slope:	1:6

20% AEP STORAGE

Depth(m):	0.69
Top Area(mAHD):	1543
Volume(m ³):	850
Slope:	1:6

1%FSA STORAGE

Depth(m):	1.19
Top Area(mAHD):	2061
Volume(m ³):	1750
Slope:	1:6

POS TYPOLOGY POS 11

POCKET PARK

SIZE

- 0.31 ha + Verge

POS 11 CONCEPT

- Significant existing trees to be retained
- Revegetation to be implemented in existing tree area to enhance local flora and fauna habitat
- Passive turf to provide open space for activities

FUNCTIONS / MATERIALS

- Bench seat to provide rest point
- Low fuel planting to minimise the threat of bushfire attack to adjacent residents

ENVIRONMENTAL CONSIDERATIONS

- Existing vegetations to be retained and protected for local flora and fauna habitat
- Water-wise basin native planting to drainage basins
- Consider long-term maintenance requirements.
- Canopy black cockatoo habitat
- Source local materials where possible to minimise transport requirements and provide local employment.
- Drainage basin as per LWMS design

DRAINAGE LEGEND - CATCHMENT R

FISRT 15MM BRA DETAILS

Depth(m):	0.59
Top Area(mAHD):	470
Volume(m ³):	195
Slope:	1:6

20% AEP STORAGE

Depth(m):	0.76
Top Area(mAHD):	563
Volume(m ³):	285
Slope:	1:6

1%FSA STORAGE

Depth(m):	1.19
Top Area(mAHD):	841
Volume(m ³):	583
Slope:	1:6



LOCATION PLAN



LANDSCAPE MASTERPLAN

LEGEND									
	MARIGINIUP LAKE		LOT		D.U.P		STREET TREES		EXTENT OF WORK
	CCW REVEGETATION PLANTING		TURF		CRUSHED LIMESTONE PATH		PROPOSED TREES		CCW
	SHRUB PLANTING		MULCH ONLY		FOOTPATH		FEATURE TREES		CCW BUFFER
	LOW FUEL PLANTING		BASIN		BOARDWALK		EXISTING TREES		

DRAFT



POS 16 CONCEPT

POS 16 TYPOLOGY
Linear POS

SIZE

- 1.1492 ha + Verge

POS 16 CONCEPT

- Provide great connections and passive views to adjacent bushland
- Significant existing trees to be retained
- Revegetation to be implemented in existing tree area to enhance local flora and fauna habitat
- Basin as per LWMS design
- Footpath connections to improve the connectivity and walkability & cyclability of west-east ecological corridor to wetlands
- Passive turf to provide open space for activities

FUNCTIONS / MATERIALS

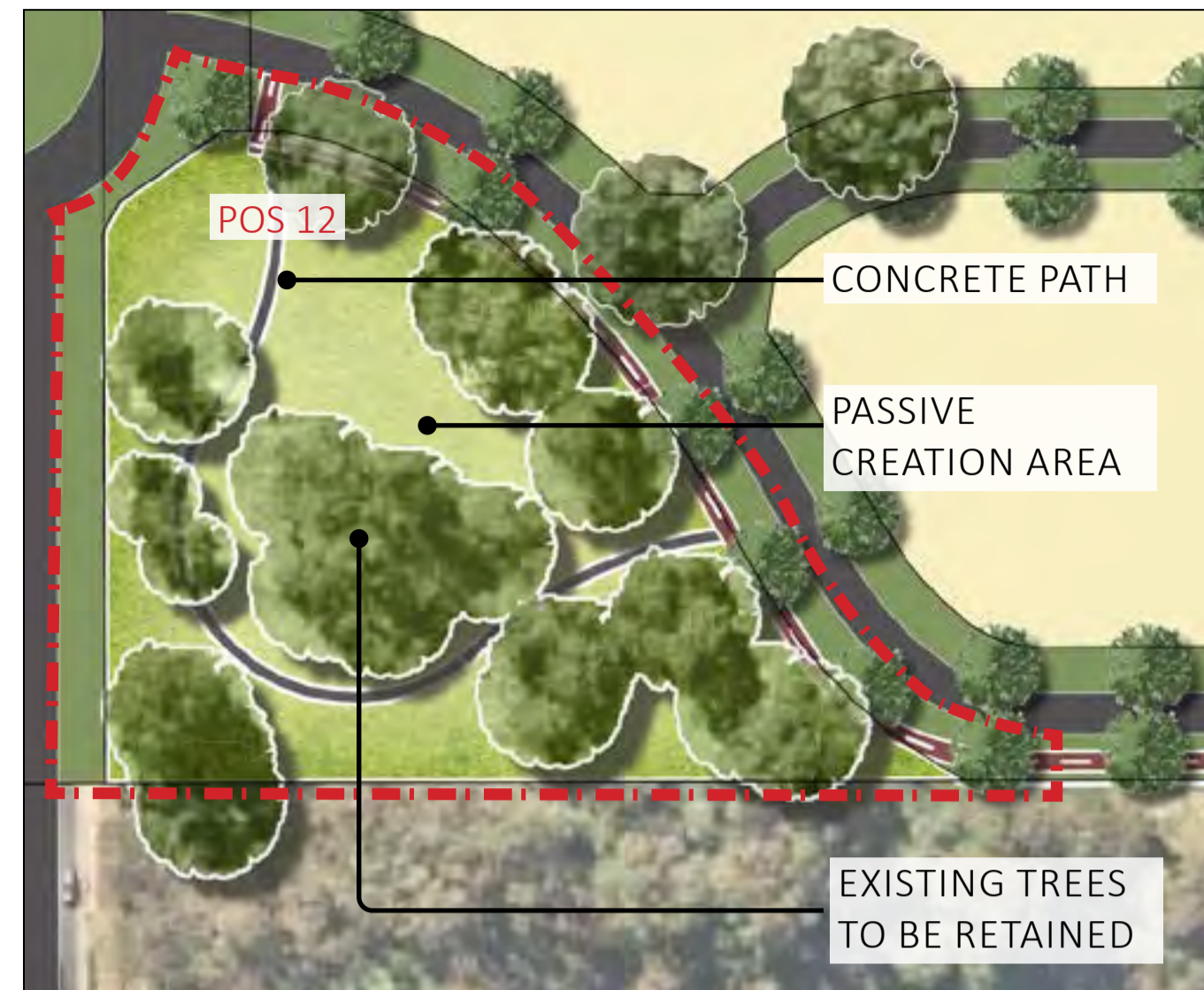
- Footpath connection to the broader path network.
- Bench seat to provide rest point
- Connected open turf areas
- Low fuel planting to minimise the threat of bushfire attack to adjacent residents
- Water-wise basin native planting to drainage basins

EXISTING TREE TO BE RETAINED

DUAL PATH

PASSIVE RECREATION AREA

CATCHMENT L



POS 12 CONCEPT

POS 12 TYPOLOGY
Pocket Park

SIZE

- 0.81 ha + Verge

POS 12 CONCEPT

- Significant existing trees to be retained
- Revegetation to be implemented in existing tree area to enhance local flora and fauna habitat
- Footpath connections to improve the connectivity and walkability cyclability
- Passive turf to provide open space for activities

FUNCTIONS / MATERIALS

- Footpath connection to the broader path network.
- Bench seat to provide rest point
- Shelter and picnic settings to provide BBQ opportunity
- Connected open turf areas
- Low fuel planting to minimise the threat of bushfire attack to adjacent residents

ENVIRONMENTAL CONSIDERATIONS

- Existing vegetations to be retained and protected for local flora and fauna habitat
- Water-wise basin native planting to drainage basins
- Consider long-term maintenance requirements.
- Canopy black cockatoo habitat
- Source local materials where possible to minimise transport requirements and provide local employment.



LOCATION PLAN



DRAINAGE LEGEND - CATCHMENT L

FISRT 15MM BRA DETAILS	
Depth(m):	0.47
Top Area(mAHD):	1993
Volume(m ³):	831
Slope:	1:6

20% AEP STORAGE	
Depth(m):	0.66
Top Area(mAHD):	2201
Volume(m ³):	1232
Slope:	1:6

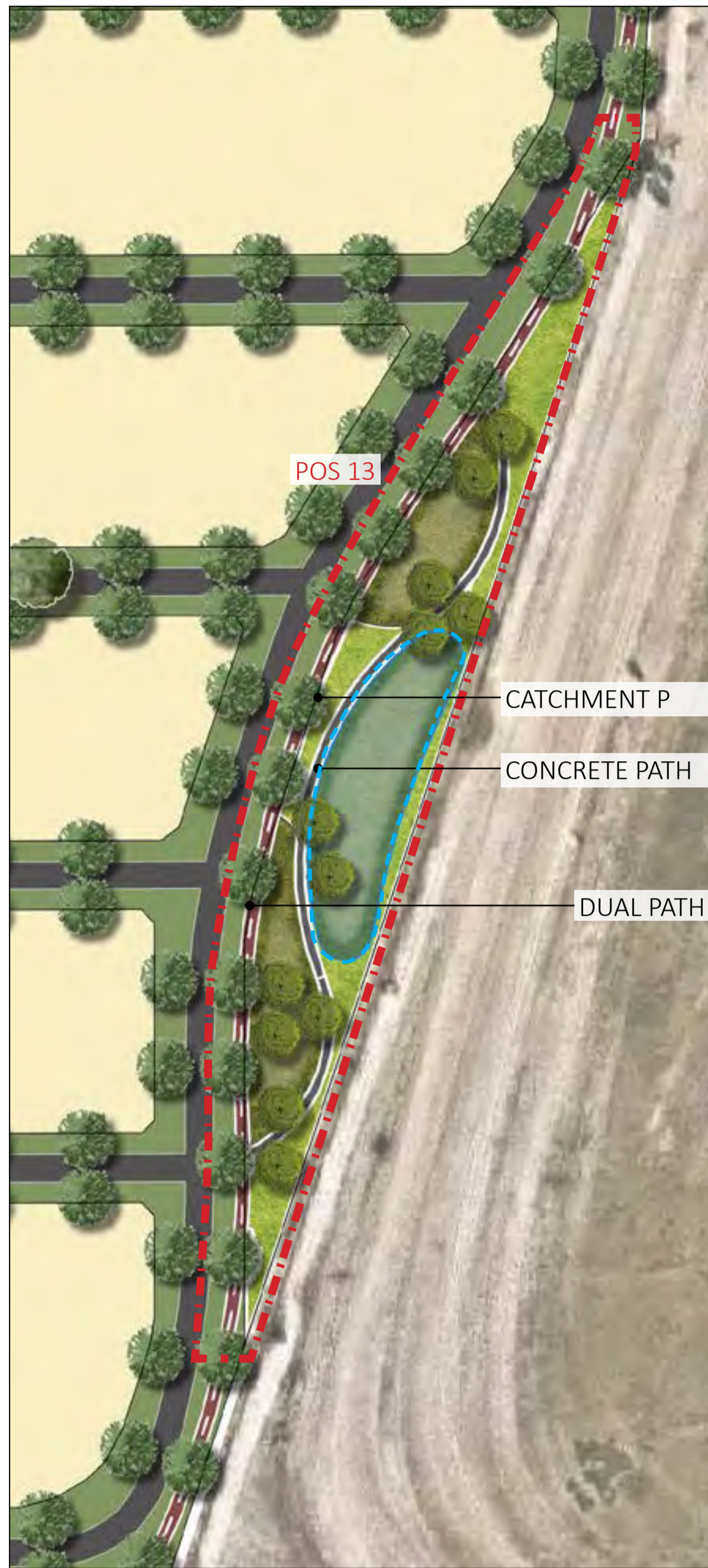
1%FSA STORAGE	
Depth(m):	1.19
Top Area(mAHD):	2852
Volume(m ³):	2560
Slope:	1:6

LEGEND

MARIGINIUP LAKE	LOT	D.U.P	STREET TREES	EXTENT OF WORK
CCW REVEGETATION PLANTING	TURF	CRUSHED LIMESTONE PATH	PROPOSED TREES	CCW
SHRUB PLANTING	MULCH ONLY	FOOTPATH	FEATURE TREES	CCW BUFFER
LOW FUEL PLANTING	BASIN	BOARDWALK	EXISTING TREES	

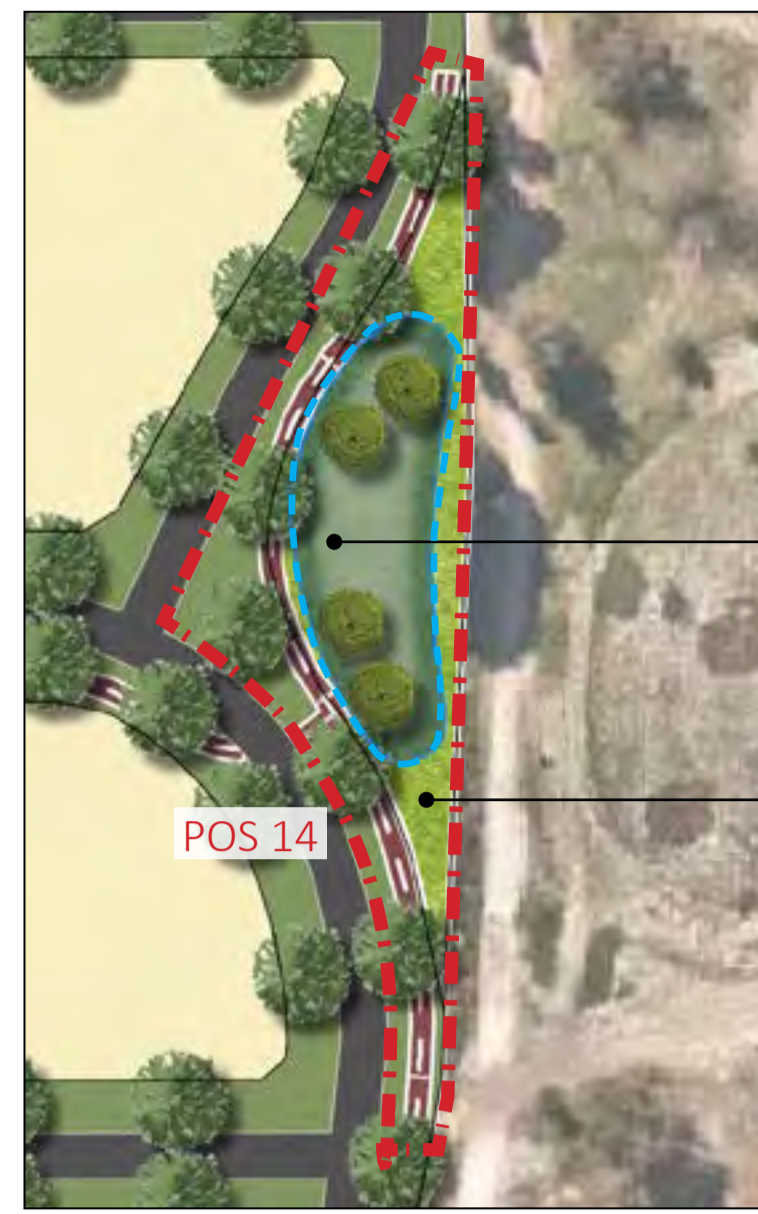
LANDSCAPE MASTERPLAN

DRAFT



POS 13 CONCEPT

DRAINAGE LEGEND - CATCHMENT P	
FIRST 15mm BRA DETAILS	-----
Depth(m):	0.5
Base Area(m ²):	882
Top Area (mAHD):	1275
Volume(m ³):	536
Slope	1:6



POS 14 CONCEPT

POS 14 TYPOLOGY	Pocket Park
SIZE	• 0.15 ha + Verge

POS 14 CONCEPT	<ul style="list-style-type: none"> • Provide great connections with broader network • Basin as per LWMS design • Footpath connections to improve the connectivity and walkability & cyclability of north-south ecological corridor • Passive turf to provide open space for activities
-----------------------	--

FUNCTIONS / MATERIALS	<ul style="list-style-type: none"> • Footpath connection to the broader path network. • Bench seat to provide rest point • Connected open turf areas to provide passive views
------------------------------	--

DRAINAGE LEGEND - CATCHMENT U	
FIRST 15mm BRA DETAILS	-----
Depth(m):	0.5
Base Area(m ²):	583
Top Area (mAHD):	909
Volume(m ³):	307
Slope	1:6

CATCHMENT U

PASSIVE RECREATION AREA



POS TYPOLOGY POS 13

Linear POS
SIZE
 • 0.53 ha + Verge

CONCEPT

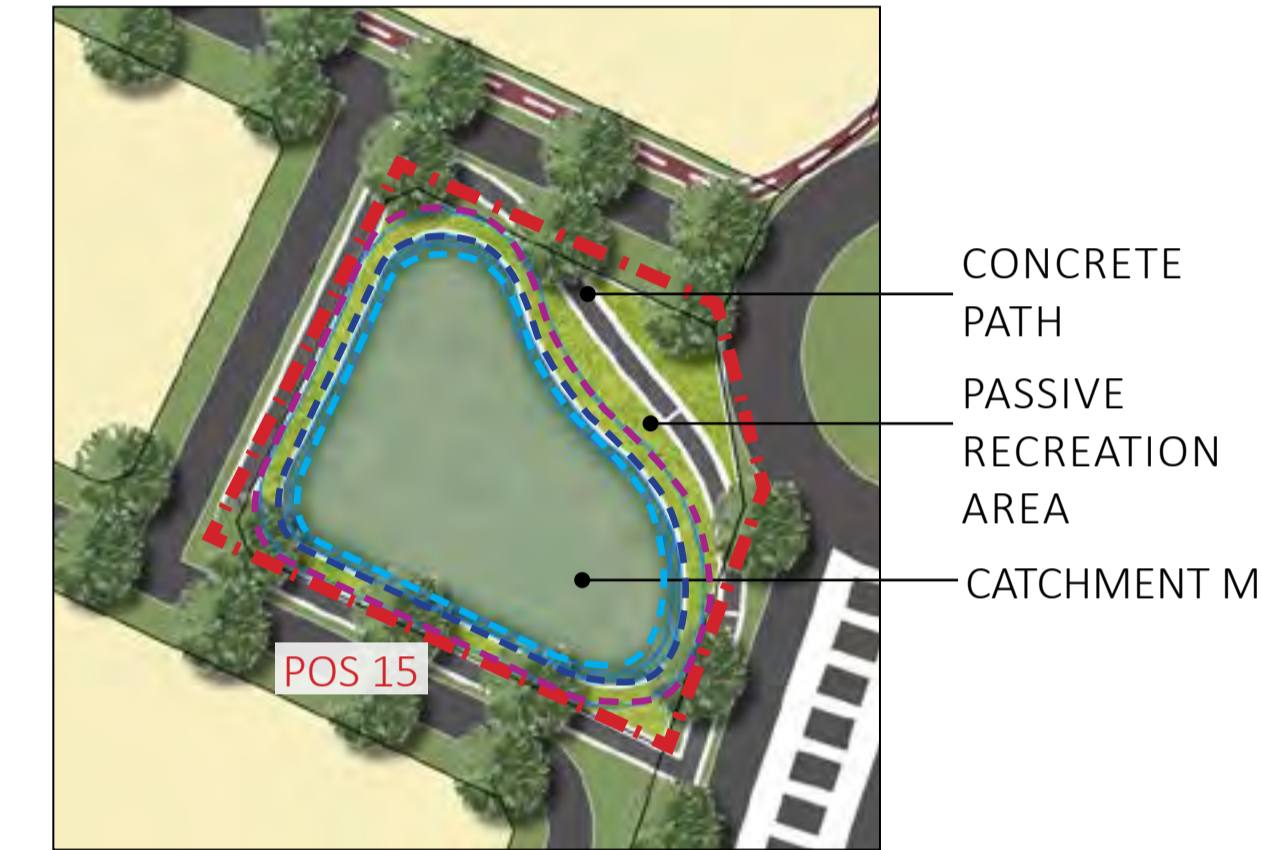
- Basin as per LWMS design
- Footpath connections to improve the connectivity and walkability & cyclability of north-south ecological corridor
- Passive turf to provide open space for activities

FUNCTIONS / MATERIALS

- Footpath connection to the broader path network.
- Bench seat to provide rest point
- Shelter and picnic settings to provide BBQ opportunity
- Connected open turf areas to provide passive views



LOCATION PLAN



POS 15 CONCEPT

DRAINAGE LEGEND - CATCHMENT M	
FIRST 15mm BRA DETAILS	-----
Depth(m):	0.49
Top Area(mAHD):	1631
Volume(m ³):	690
Slope	1:6
20% AEP STORAGE	-----
Depth(m):	0.68
Top Area(mAHD):	1820
Volume(m ³):	1019
Slope	1:6
1%FSA STORAGE	-----
Depth(m):	1.20
Top Area(mAHD):	2391
Volume(m ³):	2106
Slope	1:6

CONCRETE PATH
 PASSIVE RECREATION AREA
 CATCHMENT M

LANDSCAPE MASTERPLAN

LEGEND					
	MARIGNIU LAKE		LOT		D.U.P
	CCW REVEGETATION PLANTING		TURF		CRUSHED LIMESTONE PATH
	SHRUB PLANTING		MULCH ONLY		FOOTPATH
	LOW FUEL PLANTING		BASIN		BOARDWALK
	STREET TREES		PROPOSED TREES		FEATURE TREES
	EXISTING TREES		EXTENT OF WORK		CCW
			CCW BUFFER		

DRAFT



POS 17 CONCEPT

POS 17 TYPOLOGY

- Nature/Neighbourhood POS

SIZE

- 5.52 ha + Verge

POS 17 CONCEPT

- Large area of existing vegetation & significant trees to be retained and protected
- Opportunity of BMX bike tracks to be implemented in existing tree canopy where appropriate
- Feature turf mounding to topographically shape the landscape space as well as to provide opportunities for sitting, laying, and gathering
- All-age playground to provide play opportunities to all people
- Community gardens to provide horticulture activity area
- Drainage basin as per LWMS design

FUNCTIONS / MATERIALS

- BMX bike track for mountain bike cyclists
- All-age playground for all people
- Turf mounding to create unique landscape topography
- Boardwalk to provide good view above drainage basin
- Shelter and picnic settings to provide BBQ opportunity
- Community garden with recycled materials to provide family activity opportunity for residents

ENVIRONMENTAL CONSIDERATIONS

- Large area of existing vegetation to be retained and protected for local flora and fauna habitat
- Significant existing trees to be retained in open space where possible
- Canopy black cockatoo habitat
- Water-wise native planting and planting
- Consider long-term maintenance requirements.
- Source local materials where possible to minimise transport requirements and provide local employment.
- Dirt and crushed limestone track/path in existing vegetation area instead of sealed road to minimise the demand of hardscape works in this area.

DRAINAGE LEGEND - CATCHMENT K

FISRT 15MM BRA DETAILS

Depth(m):	0.40
Top Area(mAHD):	3136
Volume(m ³)	1143
Slope	1:6

20% AEP STORAGE

Depth(m):	0.59
Top Area(mAHD):	3397
Volume(m ³)	1757
Slope	1:6

1%FSA STORAGE

Depth(m):	1.19
Top Area(mAHD):	4303
Volume(m ³)	4083
Slope	1:6



LEGEND

MARIGINIUP LAKE	LOT	D.U.P	STREET TREES	EXTENT OF WORK
CCW REVEGETATION PLANTING	TURF	CRUSHED LIMESTONE PATH	PROPOSED TREES	CCW
SHRUB PLANTING	MULCH ONLY	FOOTPATH	FEATURE TREES	CCW BUFFER
LOW FUEL PLANTING	BASIN	BOARDWALK	EXISTING TREES	

LANDSCAPE MASTERPLAN

DRAFT



CONCEPT

- Provide great connections and passive views to wetlands area
- Nature playground with ornamental plantings
- Significant existing trees to be retained
- Revegetation to be implemented in existing tree area to enhance local flora and fauna habitat
- Dog park with agilities to be included in the POS
- Basin as per LWMS design
- Footpath connections to improve the connectivity and walkability & cyclability of west-east ecological corridor to wetlands
- Passive turf to provide open space for activities



LOCATION PLAN

FUNCTIONS / MATERIALS

- Footpath connection to the broader path network.
- Bench seat to provide rest point
- Dog park for dog agility play opportunity for residents
- Shelter and picnic settings to provide BBQ opportunity
- Nature playground for kids
- Connected open turf areas to provide passive views to wetlands
- Low fuel planting to minimise the threat of bushfire attack to adjacent residents



ENVIRONMENTAL CONSIDERATIONS

- Existing vegetations to be retained and protected for local flora and fauna habitat
- Provide buffer and ecological access to CCW area
- Low fuel plantings to minimise the threat of bushfire attack to adjacent residents
- Water-wise basin native planting to drainage basins
- Consider long-term maintenance requirements.
- West-east ecological corridor connecting to CCW area also improve the walkability throughout the estate
- Canopy black cockatoo habitat
- Source local materials where possible to minimise transport requirements and provide local employment.



POS 18, 19 & 20

POS 18 TYPOLOGY
Pocket Park
SIZE
• 0.36 ha+ Verge

POS 20 TYPOLOGY
Neighbourhood POS
SIZE
• 1.75 ha + Verge

DRAINAGE LEGEND - CATCHMENT I

FIRST 15mm BRA DETAILS

Depth(m):	0.5
Basin Area(m ²):	831
Top Area(mAHD):	1213
Volume(m ³):	508
Slope	1:6

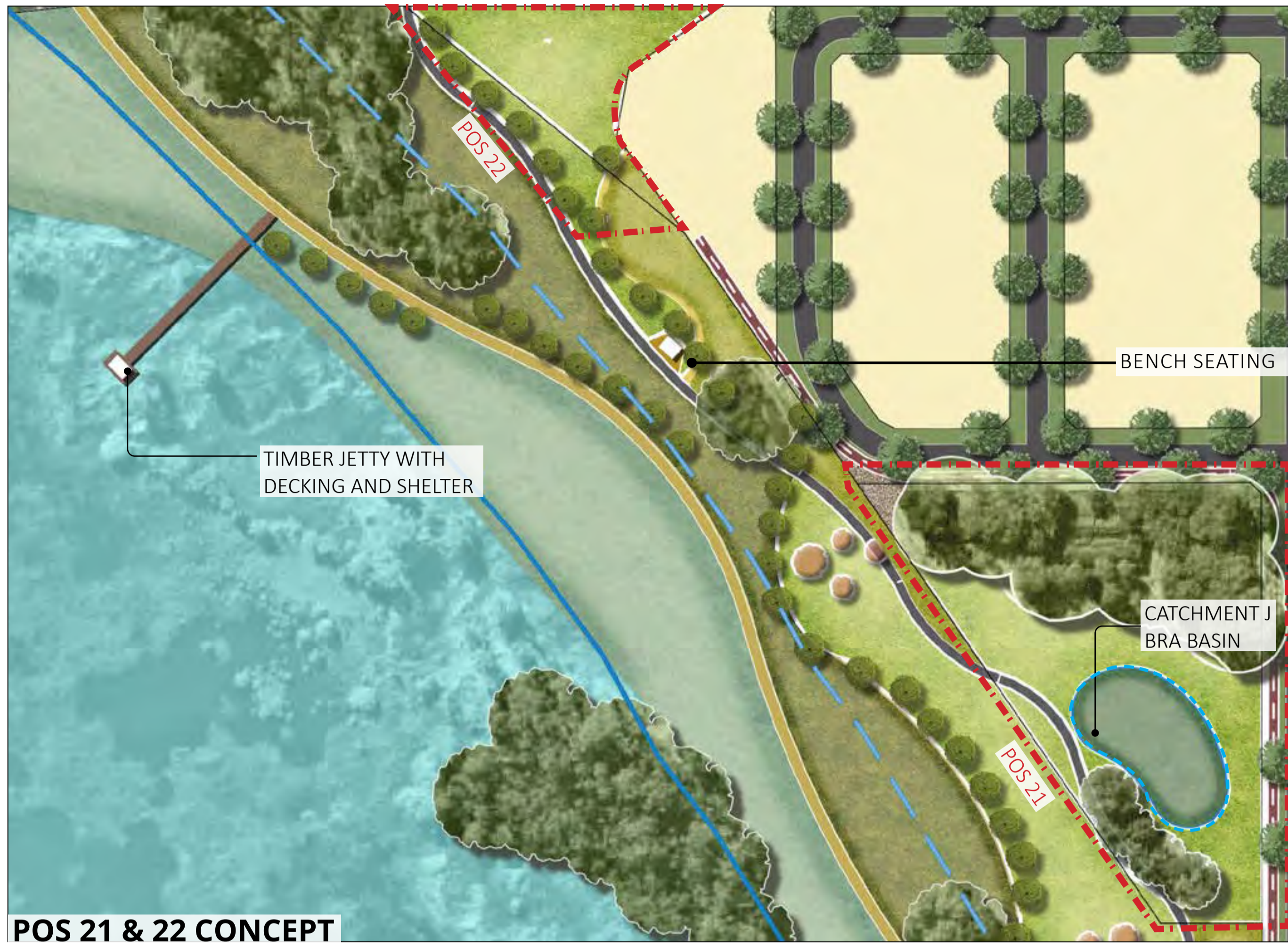


LANDSCAPE MASTERPLAN

LEGEND

MARIGINIUP LAKE	LOT	D.U.P	STREET TREES	EXTENT OF WORK
CCW REVEGETATION PLANTING	TURF	CRUSHED LIMESTONE PATH	PROPOSED TREES	CCW
SHRUB PLANTING	MULCH ONLY	FOOTPATH	FEATURE TREES	CCW BUFFER
LOW FUEL PLANTING	BASIN	BOARDWALK	EXISTING TREES	

DRAFT



POS 21 TYPOLOGY

Pocket Park

SIZE

- 0.87 ha+ Verge

POS 22 TYPOLOGY

Pocket Park

SIZE

- 0.20 ha+ Verge

CONCEPT

- Minimised design with seating nodes to provide rest point to pedestrians.
- Revegetation and basin planting to give buffer to wetlands as well as reduce irrigation usage
- Footpath connections lead to bigger open space
- Passive turf to provide access to wetlands

FUNCTIONS / MATERIALS

- Footpath connection to the broader path network.
- Bench seat to provide rest point

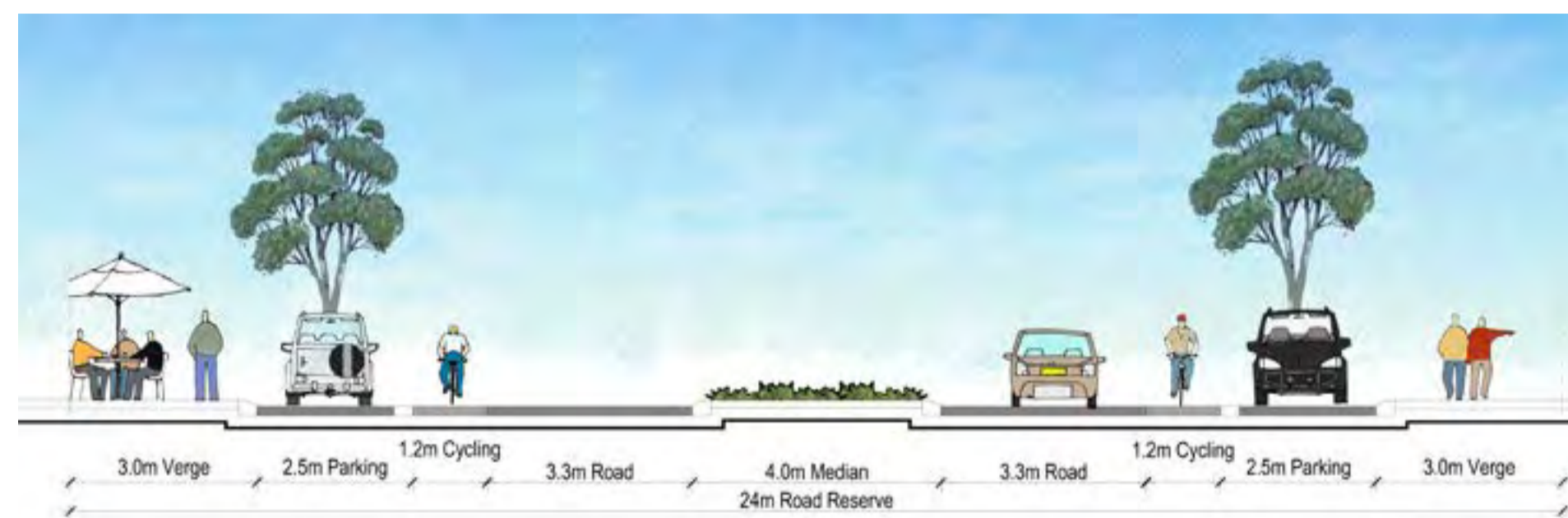
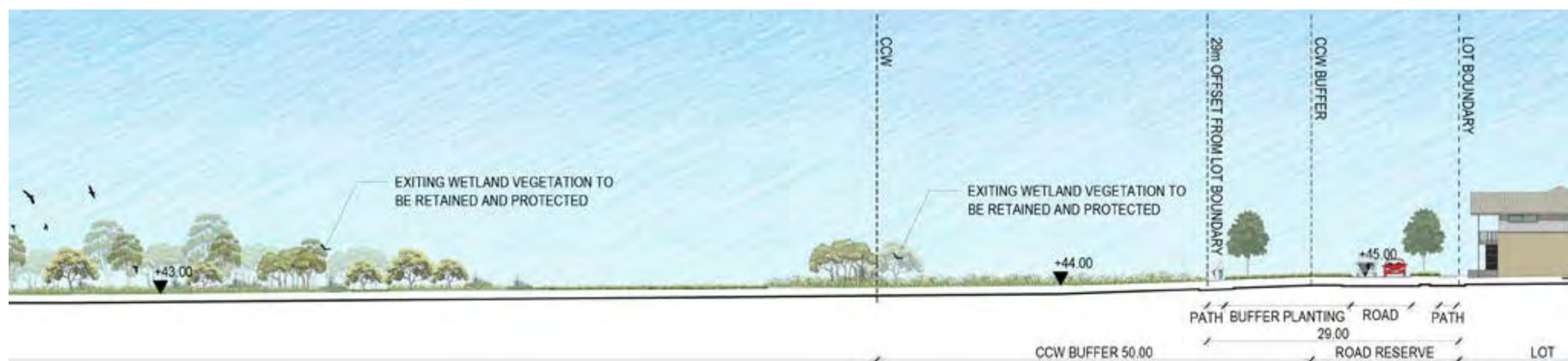
ENVIRONMENTAL CONSIDERATIONS

- Low fuel plantings to minimise the threat of bushfire attack to adjacent residents
- Water-wise basin native planting
- Minimised use of hard paving to reduce the impacts on wetlands flora/ fauna

DRAINAGE LEGEND - CATCHMENT J

FIRST 15mm BRA DETAILS

Depth(m):	0.5
Base Area(m ²):	842
Top Area(mAHD):	1227
Volume(m ³):	514
Slope:	1:6



LANDSCAPE MASTERPLAN

LEGEND

MARIGINIUP LAKE	LOT	D.U.P	STREET TREES	EXTENT OF WORK
CCW REVEGETATION PLANTING	TURF	CRUSHED LIMESTONE PATH	PROPOSED TREES	CCW
SHRUB PLANTING	MULCH ONLY	FOOTPATH	FEATURE TREES	CCW BUFFER
LOW FUEL PLANTING	BASIN	BOARDWALK	EXISTING TREES	

DRAFT

POS 1 (2.63ha)

(CONSERVATION POS) INCLUDES: CRUSHED LIMESTONE TRAIL CONNECTION TO NATURE RESERVE TO MEANDER BETWEEN EXISTING TREES. MEANDERING BETWEEN EXISTING TREES. DUAL USE PATH CONNECTS TO WETLAND

POS 2 (6.8ha)

(NATURE POS) INCLUDES: PEDESTRIAN NETWORK WHICH CONNECTS INTO BROADER DEVELOPMENT. BIG OPEN TURF AREA TO PROVIDE PASSIVE VIEW AND ACCESS TO WETLAND. TIMBER DECKING OVERLOOK TO WETLAND

POS 3 (0.79ha)

(LOCAL POS) LARGER AREA OF EXISTING VEGETATIONS TO BE RETAINED. PEDESTRIAN NETWORK WHICH CONNECTS INTO BROADER DEVELOPMENT. SMALL PLAYGROUND FOR ALL AGES. SHELTER WITH PICNIC SETTING FOR BBQ

POS 4 (0.58ha)

(NATURE POS) INCLUDES: PEDESTRIAN NETWORK WHICH CONNECTS INTO BROADER DEVELOPMENT. OPEN TURF AREA FOR GATHERING. BUFFER PLANTING BETWEEN ROAD AND EXISTING BUSHLAND. DRAINAGE BASIN AS PER LWMS DESIGN

POS 5 (4.00ha)

(SPORT POS) INCLUDES: SENIORS SPORTS OVAL. MULTI GOAL HALF COURT, FEATURE OPEN TURF SPACE FOR ACTIVE / PASSIVE RECREATION

POS 6 (3.16ha)

(NATURE POS) INCLUDES: PEDESTRIAN NETWORK WHICH CONNECTS INTO BROADER DEVELOPMENT. BIG OPEN TURF AREA TO PROVIDE PASSIVE VIEW AND ACCESS TO WETLAND

POS 7 (1.07ha)

(NATURE POS) INCLUDES: NATURE PLAYGROUND FOR KIDS, ALL AGED FITNESS CENTRE, BOARDWALK AROUND BASIN, TURF AREA FOR ACTIVE OPEN SPACE, STORAGE BASIN AS PER LWMS DESIGN

POS 8 (0.86ha)

(LINEAR POS) INCLUDES: RED ASPHALT DUAL USE PATH WHICH CONNECTS INTO NATURE POS, BENCH SEAT, OPEN TURF, EXISTING TREE CLUSTER AND LOW FUEL PLANTING

POS 9 (1.01ha)

(NEIGHBOURHOOD POS) INCLUDES: PEDESTRIAN NETWORK WHICH CONNECTS INTO BROADER DEVELOPMENT. BIG OPEN TURF AREA FOR PASSIVE RECREATION. FOOTPATH WAVING AROUND TURF AND SHRUB PLANTING. NATURE PLAYGROUND AND BENCHES FOR REST AREA. BASINS AS PER LWMS DESIGN

POS 10 (1.15ha)

(NATURE POS) INCLUDES: LARGE AREA OF EXISTING TREE CANOPY. PLAYGROUND FOR ALL AGES. SHELTER WITH PICNIC SETTING FOR BBQ. FEATURE TURF MOUNDING

POS 11 (0.31ha)

(POCKET PARK) INCLUDES: LARGE AREA OF EXISTING TREE CANOPY, TURF AREA FOR OPEN SPACE AND DRAINAGE BASIN AS PER LWMS DESIGN

POS 12 (0.81ha)

(POCKET PARK) PEDESTRIAN NETWORK WHICH CONNECTS INTO BROADER DEVELOPMENT. BENCH SEAT. LOW FUEL PLANTING

POS 13 (0.53ha)

(LINEAR POS) PEDESTRIAN NETWORK WHICH CONNECTS INTO BROADER DEVELOPMENT. DRAINAGE BASIN. LOW FUEL PLANTING

POS 14 (0.15ha)

(POCKET PARK) PEDESTRIAN NETWORK WHICH CONNECTS INTO BROADER DEVELOPMENT. SIGNIFICANT EXISTING BIG TREES TO BE RETAINED AND PROTECTED

POS 15 (0.31ha)

(POCKET PARK) INCLUDES: PEDESTRIAN NETWORK WHICH CONNECTS INTO BROADER DEVELOPMENT. DRAINAGE BASIN AS PER LWMS DESIGN

POS 16 (0.51ha)

(LINEAR POS) INCLUDES: PEDESTRIAN NETWORK WHICH CONNECTS INTO BROADER DEVELOPMENT. DRAINAGE BASIN AS PER LWMS DESIGN

POS 17 (5.52ha)

(NATURE /NEIGHBOURHOOD POS) INCLUDES: PEDESTRIAN NETWORK WHICH CONNECTS INTO BROADER DEVELOPMENT, ALL AGE PLAYGROUND, COMMUNITY GARDEN SHELTER WITH PICNIC SETTING FOR BBQ, LARGE AREAS OF EXISTING TREES AND BMX BIKE TRACK TO BE IMPLEMENTED UNDER TREES WHERE APPROPRIATE. DRAINAGE BASIN AS PER LWMS DESIGN

POS 18 (0.36ha)

(POCKET PARK) INCLUDES: PEDESTRIAN NETWORK WHICH CONNECTS INTO BROADER DEVELOPMENT, SHELTER WITH PICNIC SETTING. DRAINAGE BASIN AS PER LWMS DESIGN

POS 19 (0.03ha)

(POCKET PARK) INCLUDES: PEDESTRIAN NETWORK WHICH CONNECTS INTO BROADER DEVELOPMENT

POS 20 (1.75ha)

(NEIGHBOURHOOD POS) INCLUDES: PEDESTRIAN NETWORK WHICH CONNECTS INTO BROADER DEVELOPMENT, NATURE PLAYGROUND WITH SHELTER AND PICNIC SETTING. AREAS OF EXISTING TREES TO BE RETAINED, DOG PARK AND OPEN TURF SPACES FOR PASSIVE AND ACTIVE RECREATION. DRAINAGE BASIN AS PER LWMS DESIGN

POS 21 (0.87ha)

(POCKET PARK) INCLUDES: PEDESTRIAN NETWORK WHICH CONNECTS INTO BROADER DEVELOPMENT, OPEN TURF AREA TO PROVIDE PASSIVE VIEW AND ACCESS TO WETLAND, SIGNIFICANT EXISTING TREES TO BE RETAINED. DRAINAGE BASIN AS PER LWMS DESIGN

POS 22 (0.20ha)

(POCKET PARK) INCLUDES: PEDESTRIAN NETWORK WHICH CONNECTS INTO BROADER DEVELOPMENT, OPEN TURF AREA TO PROVIDE PASSIVE VIEW AND ACCESS TO WETLAND. DRAINAGE BASIN AS PER LWMS DESIGN

DRAFT



STREET TREE PLANTINGS



Eucalyptus gomphocephala



Jacaranda mimosifolia



Olea europaea (Swan Hill)



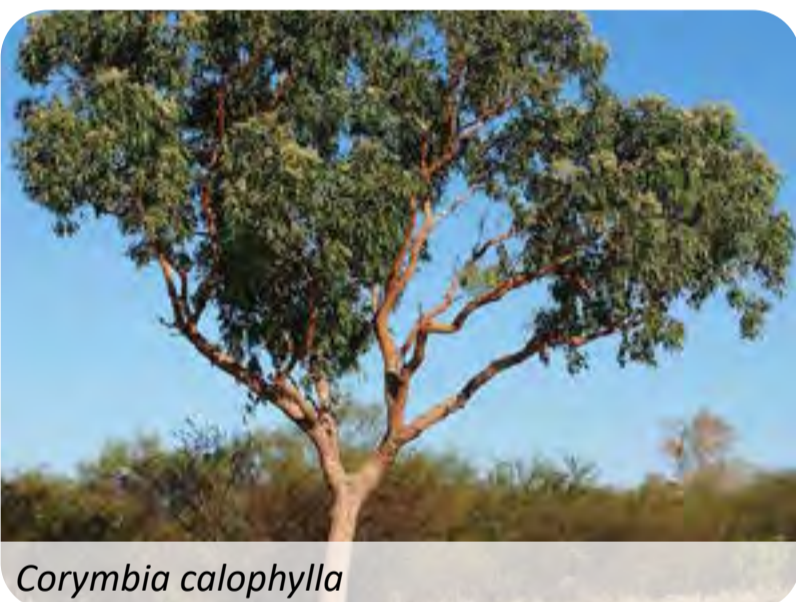
Melaleuca leucadendron



Agonis flexuosa



Callistemon 'KPS'



Corymbia calophylla



Eucalyptus gomphocephala



Eucalyptus rudis



Eucalyptus todtiana



Eucalyptus marginata



Melaleuca raphiophylla

LOW FUEL PLANTING



Anigozanthos manglesii



Austrostipa compressa



Conostylis aculeata



Dampiera linearis



Juncus pallidus



Kennedia prostrata



Kunzea recurva



Melaleuca thymoides



Patersonia occidentalis



Anigozanthos manglesii



Adenanthos cygnorum



Banksia grandis



Baumea juncea



Beaufortia squarrosa



Darwinia citriodora



Juncus pallidus



Kennedia prostrata



Verticordia densiflora

SHRUB PLANTING



Acacia lasiocarpa



Conostylis aculeata ssp. preissii



Dianella revoluta



Dampiera linearis



Eremophila maculata



Grevillea crithmifolia



Grevillea thelemanniana



Hemiandra pungens



Patersonia occidentalis



Olearia axillaris



Rhagodia baccata



Darwinia citriodora



Dianella cass blue



Eremophila glabra



Lepidosperma calcicola



Lepidosperma gladiatum



Lomandra longifolia



Meeboldina scariosa

REVEGETATION PLANTING