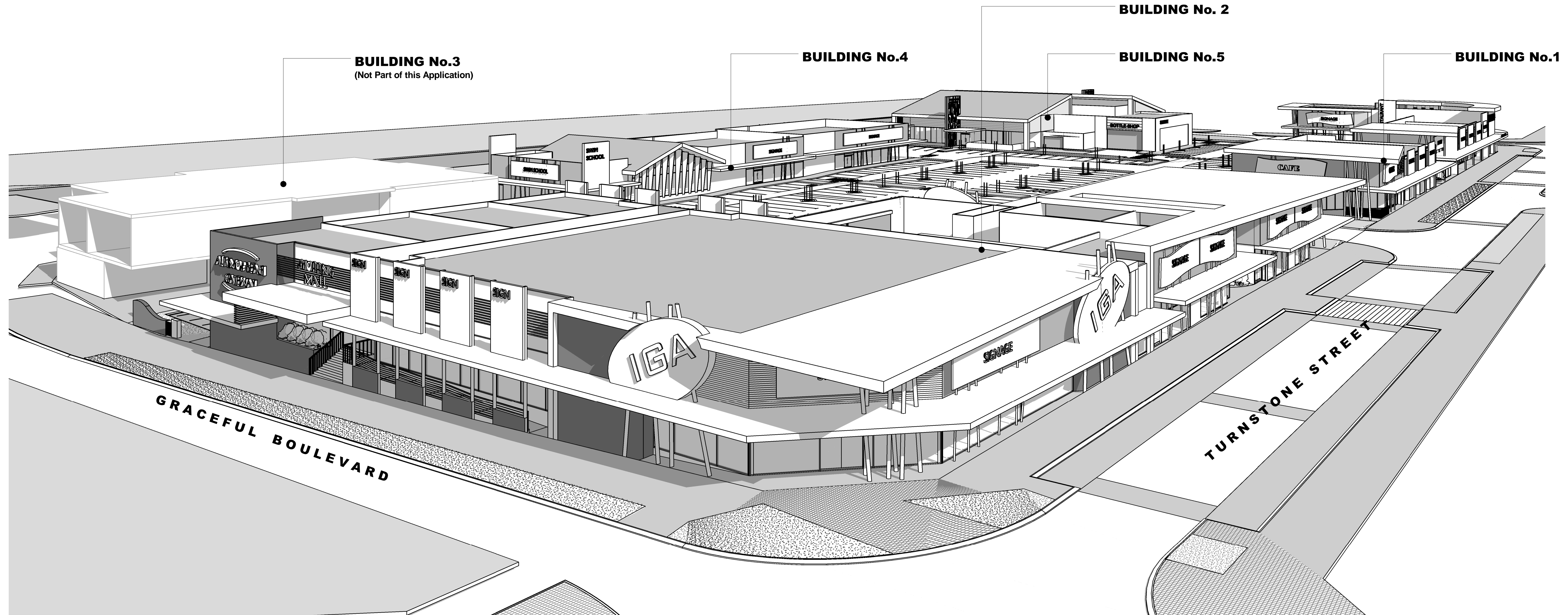


PROPOSED ALKIMOS GATEWAY MIXED USE DEVELOPMENT

LOCATION : THE GATEWAY ALKIMOS BEACH

MSA PROJECT NUMBER: 7690



DRAWING LIST

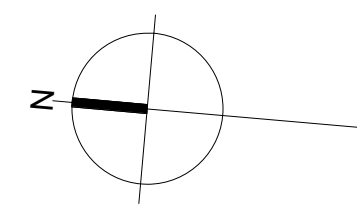
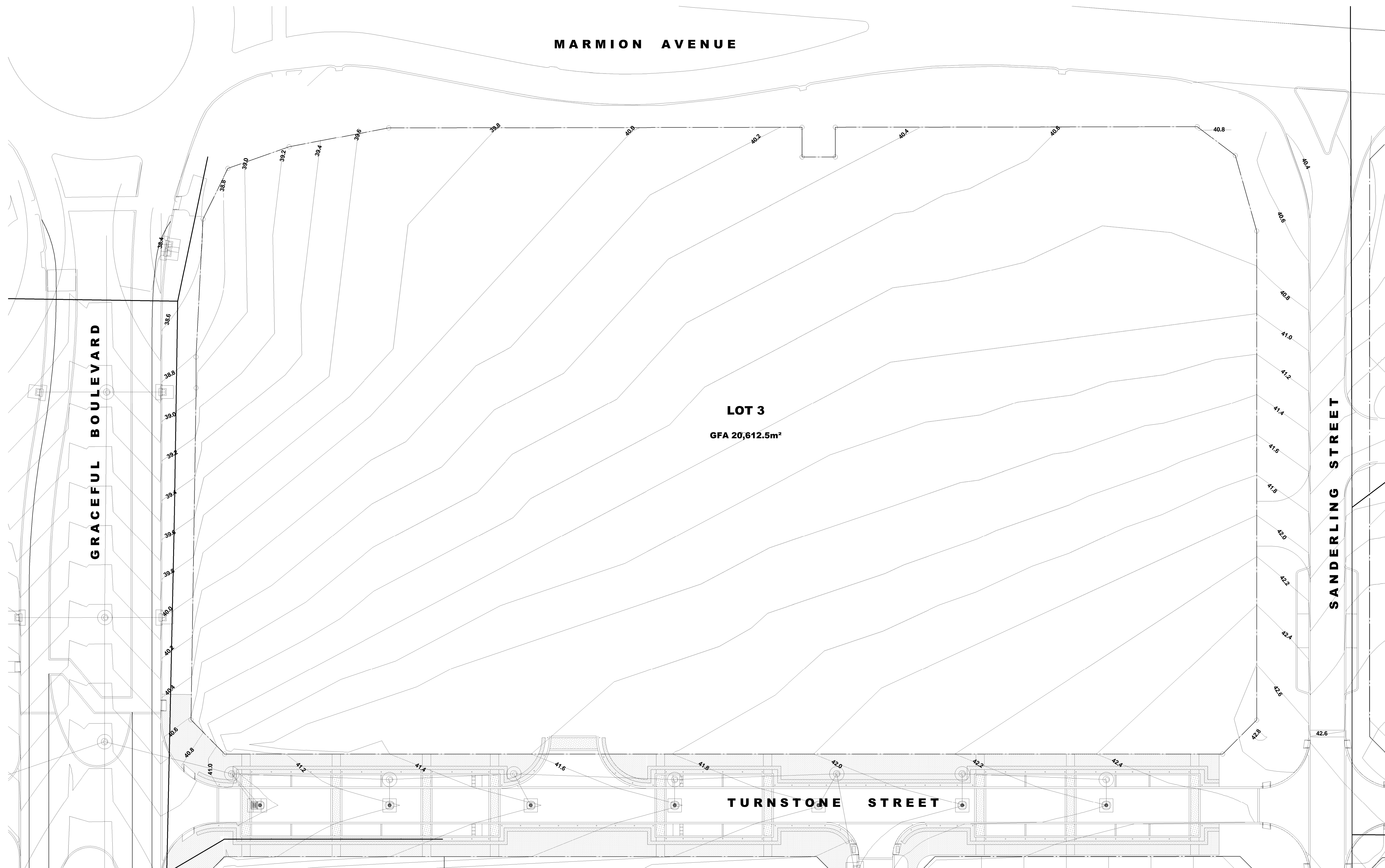
SHEET 1 -	COVER SHEET	SHEET 10 -	ELEVATIONS & PERSPECTIVES (BUILDING No.4)
SHEET 2 -	SITE SURVEY	SHEET 11 -	GROUND FLOOR PLAN (BUILDING No.5)
SHEET 3 -	SITE PLAN	SHEET 12 -	ELEVATIONS & PERSPECTIVES (BUILDING No.5)
SHEET 4 -	GROUND FLOOR PLAN (BUILDING No.1)	SHEET 13 -	ARTISTS IMPRESSION
SHEET 5 -	ELEVATIONS & PERSPECTIVES (BUILDING No.1)	SHEET 14 -	ARTISTS IMPRESSION
SHEET 6 -	GROUND FLOOR PLAN (BUILDING No.2)	SHEET 15 -	ARTISTS IMPRESSION
SHEET 7 -	ELEVATIONS & PERSPECTIVES (BUILDING No.2)	SHEET 16 -	ARTISTS IMPRESSION
SHEET 8 -	GROUND FLOOR PLAN (BUILDING No.3)	SHEET 17 -	ARTISTS IMPRESSION
SHEET 9 -	GROUND FLOOR PLAN (BUILDING No.4)		

SK018
OCT 2014
1

7690

Member
Australian Institute
of Architects
meyer shircore
and associates
ARCHITECTS
1963 | 2013
50 YEARS

© Meyer Shircore & Associates ACN 115 189 216
Suite 2, Ground Floor, 437 Roberts Road Subiaco WA 6008
PO Box 1294 Subiaco WA 6904
t: 08 9381 8511 f: 08 9388 1399



SITE SURVEY
SCALE: 1:300

PROPOSED ALKIMOS GATEWAY MIXED USE DEVELOPMENT

LOCATION : THE GATEWAY ALKIMOS BEACH

FOR: MARMION NETWORK PTY. LTD.

PROJECT No 7690
 SKETCH No SK018
 SHEET No 2
 SCALE 1:300 @ B1
 DATE 10/17/14

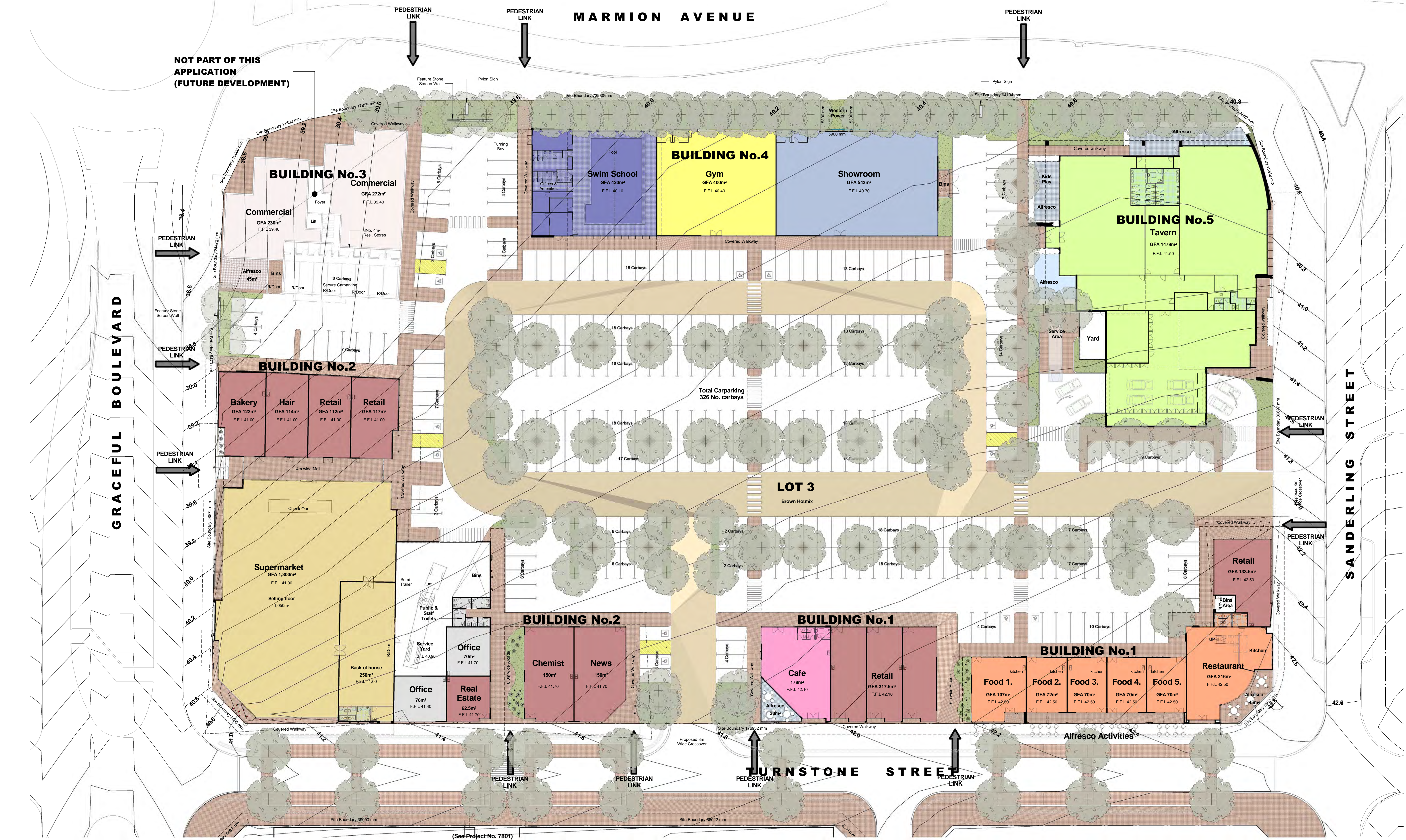


Suite 2, Ground Floor, 437 Roberts Rd,
 Subiaco, Western Australia 6008.
 t : (08) 9381 8511.
 e: msa@meyershircore.com.au
 w: www.meyershircore.com.au

© Meyer Shircore
 & Associates
 ACN 115 189 216



SITE CRITERIA							
1. Site Area	20,612.5m ²	d. Building No.4					
2. Floor Area		i. Swim School	420m ²				
a. Building No.1		ii. Gym	400m ²				
i. Retail (T1, T8)	451m ²	iii. Showroom	543m ²				
ii. Restaurant		Total	1,363m ²				
Ground Floor	216m ²	e. Building No.5					
Mezzanine	91m ²	i. Tavern	1,479m ²				
iii. Fast Food (1-5)	389m ²	Gross Total	7,620m ²				
iv. Cafe & Alfresco	208m ²						
Total	1,355m ²						
b. Building No.2		3. Carparking					
i. News	150m ²	Cars Required					
ii. Chemist	150m ²	Building No.1					
iii. Retail (T13, T16-T19)	527.5m ²	i. Retail (T1, T8)	451m ² @ 7/100m ²	31.6 cars			
iv. Supermarket	1,300m ²	ii. Restaurant	B.O.H 107m ²				
v. Office	146m ²	Dining Area 210m ²					
Total	2,273.5m ²	Balcony 45m ²					
c. Building No.3		Total 300m ² @ 1per/2m ² = 150ppl @ 1car/4ppl		37.5 cars			
Not Part of this Application		iii. Fast Food (1-5)	389m ² @ 7/100m ²	27.2 cars			
i. Commercial	502m ²	iv. Cafe & Alfresco	B.O.H 58m ²				
ii. Residential (8 Apartments)	647.5m ²	Dining Area 120m ²					
Total	1,149.5m ²	Alfresco 30m ²					
		Total 150m ² @ 1per/2m ² = 75ppl @ 1car/4ppl		18.75 cars			
		Building No.2					
		i. News	150m ² @ 7/100m ²	10.5 cars			
		ii. Chemist	150m ² @ 7/100m ²	10.5 cars			
		iii. Retail (T13, T16-T19)	527.5m ² @ 7/100m ²	36.9 cars			
		iv. Supermarket	1,050m ² @ 7/100m ²	73.5 cars			
		Selling Floor	250m ² @ 1/50m ²	5 cars			
		B.O.H	146m ² @ 1/30m ²	4.9 cars			
		v. Office	502m ² @ 1/30m ²	16.7 cars			
		Building No.3					
		i. Commercial	502m ² @ 1/30m ²	8 cars			
		ii. 8 No. Residential Units					
		Building No.4					
		i. Swim School	420m ² @ 40ppl @ 1/4ppl	10 cars			
		ii. Gym	400m ² @ 40ppl @ 1/4ppl	10 cars			
		iii. Showroom	543m ² @ 1/30m ²	18.1 cars			
		Building No.5					
		i. Tavern	1,479m ²				
		- Reciprocal Tavern parking for 60%	144cars x 40%	58 cars			
		Total		377.2 cars			
		Cars Provided					
		Total		326 Cars			
		4. Carpark Trees					
		Trees Required	a. 326 cars	= 81 Trees			
		Trees Provided	a. 81 Trees				
		5. Landscaping Required					
		a. 8% of site	1,649m ²				
		Provided					
		a. Soft	1,405m ² or 6.81%				
		b. Hard	2,280m ²				
		Total	3,685m²				
			(17.9% of site)				



PROPOSED ALKIMOS GATEWAY MIXED USE DEVELOPMENT

LOCATION : THE GATEWAY ALKIMOS BEACH

FOR: MARMION NETWORK PTY. LTD.

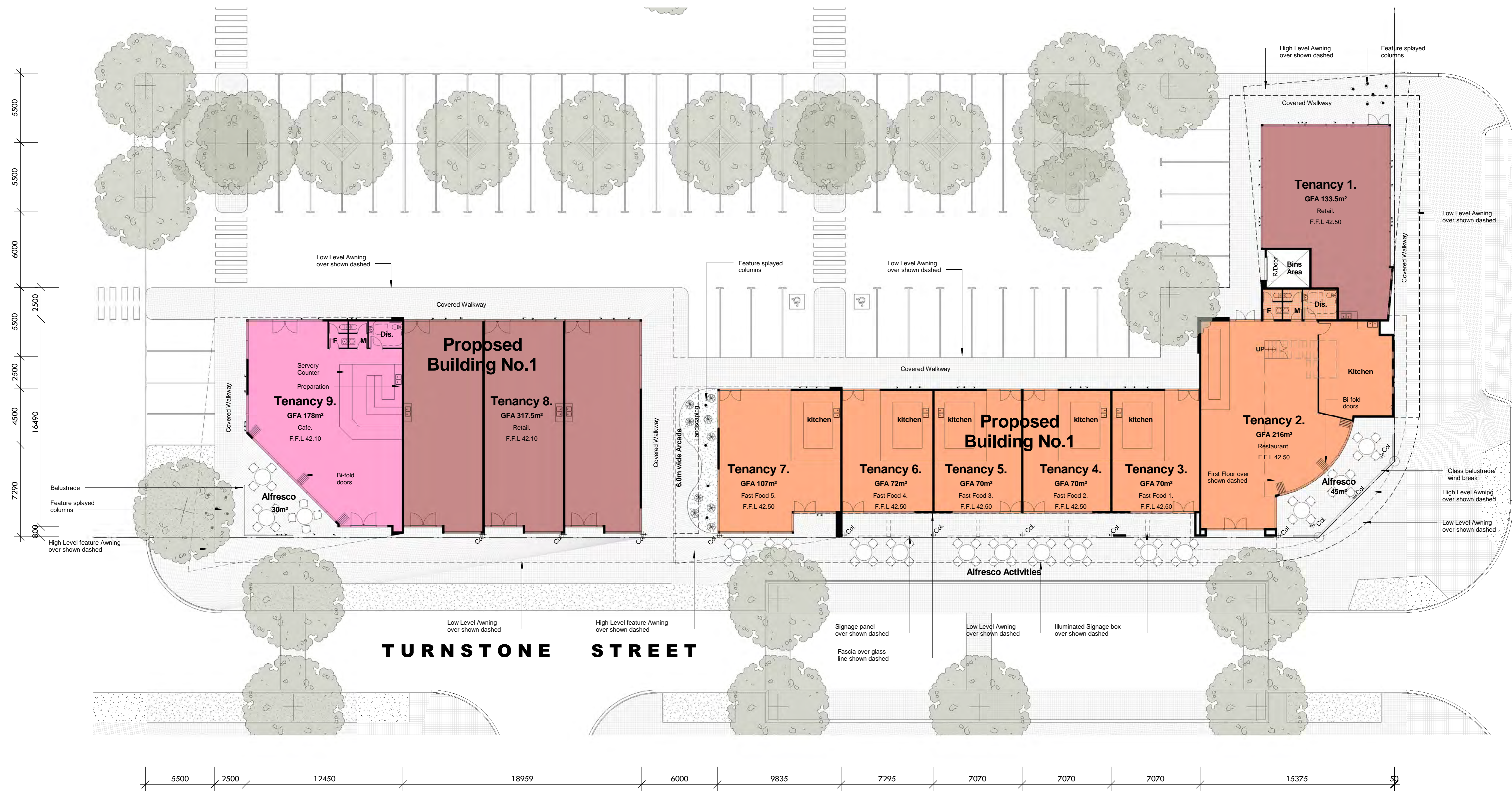
PROJECT No 7690
 SKETCH No SK018
 SHEET No 3
 SCALE As indicated @ B1
 DATE OCT 2014



Suite 2, Ground Floor, 437 Roberts Rd,
 Subiaco, Western Australia 6008.
 t : (08) 9381 8511.
 e : msa@meyershircore.com.au.
 w : www.meyershircore.com.au

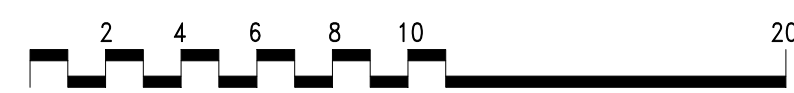
© Meyer Shircore & Associates
 ACN 115 189 216
 Member Australian Institute of Architects

SITE PLAN
 SCALE: 1:300

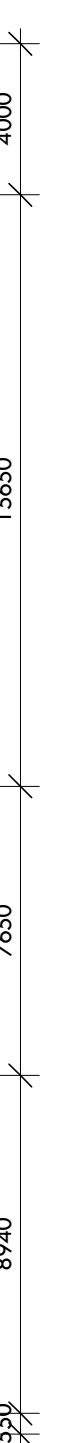


BUILDING No.1 GROUND FLOOR PLAN

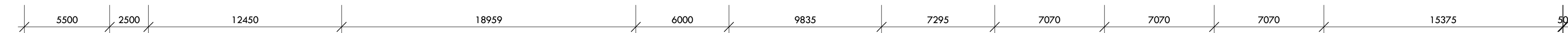
SCALE: 1 : 200



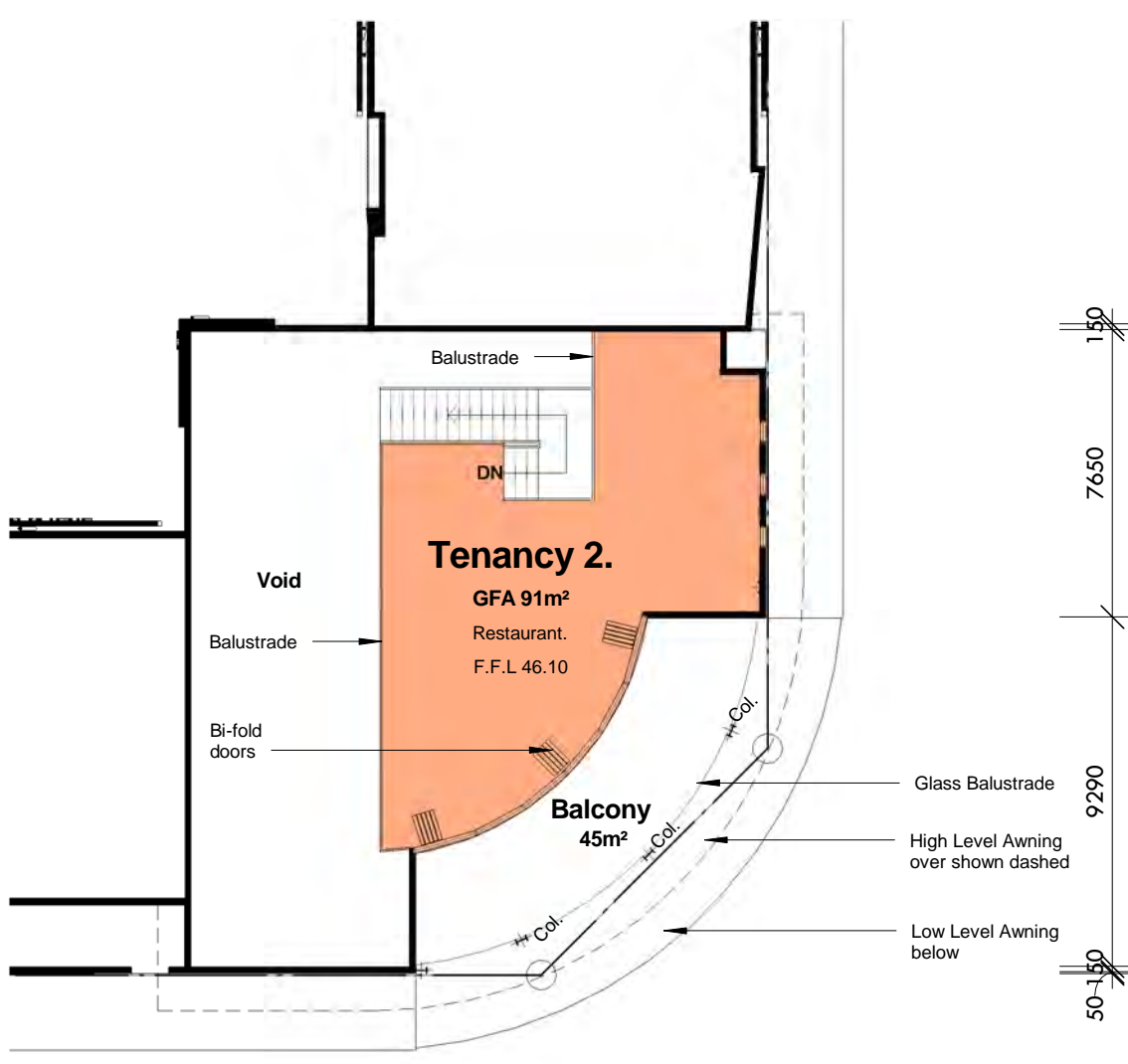
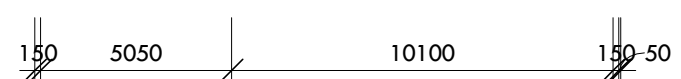
SANDLERLING STREET



TURNSTONE STREET

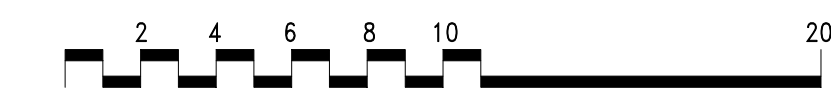


TURNSTONE STREET

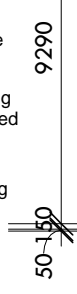


BUILDING No.1 FIRST FLOOR PLAN

SCALE: 1 : 200



SANDLERLING STREET



PROPOSED ALKIMOS GATEWAY MIXED USE DEVELOPMENT

LOCATION : THE GATEWAY ALKIMOS BEACH

FOR: MARMION NETWORK PTY. LTD.

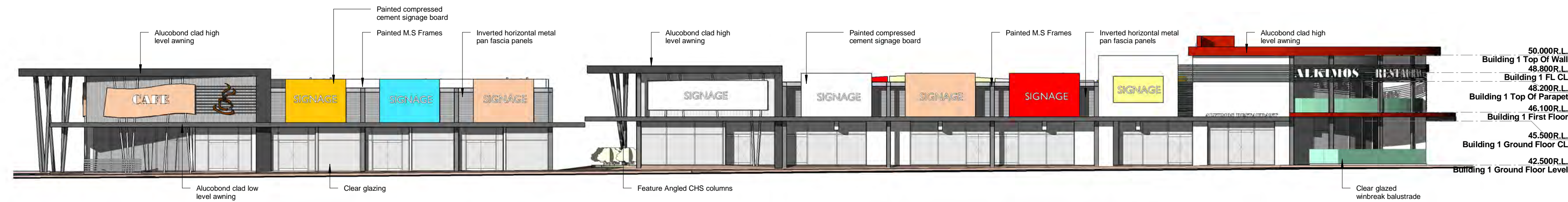
PROJECT No 7690
 SKETCH No SK018
 SHEET No 4
 SCALE 1 : 200 @ B1
 DATE 10/10/14



Suite 2, Ground Floor, 437 Roberts Rd,
 Subiaco, Western Australia 6008.
 t : (08) 9381 8511.
 e: msa@meyershircore.com.au
 w: www.meyershircore.com.au

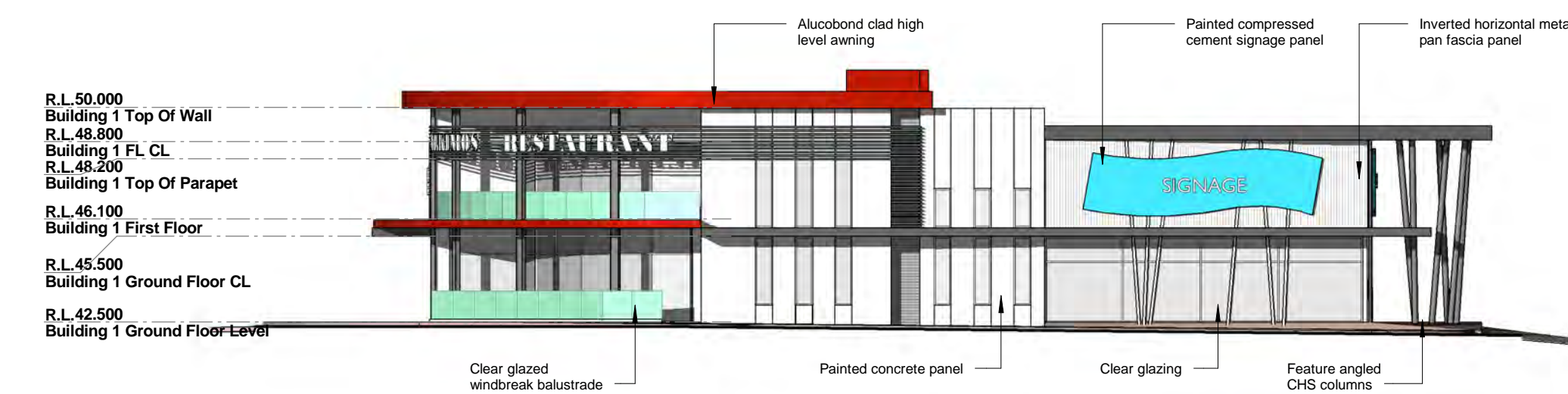
© Meyer Shircore
 & Associates
 ACN 115 189 216





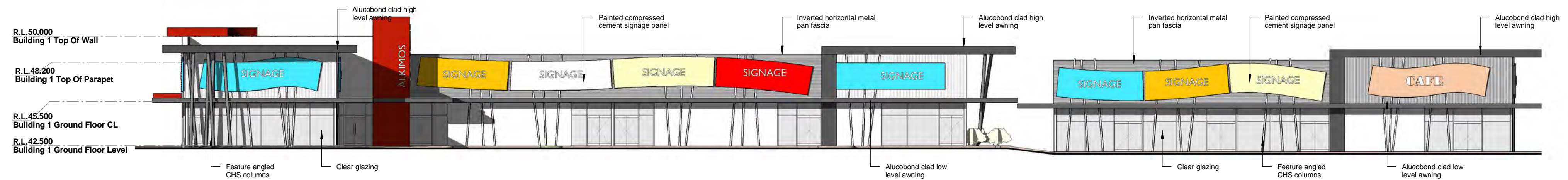
BUILDING No.1 - WEST ELEVATION (TURNSTONE STREET)

SCALE: 1:200



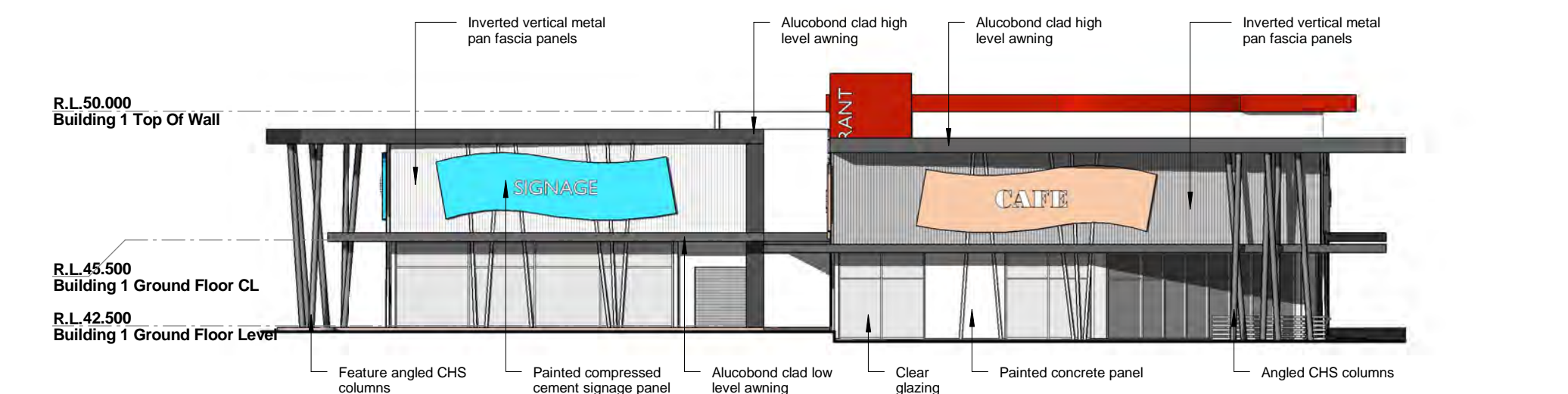
BUILDING No.1 - SOUTH ELEVATION (SANDERLING STREET)

SCALE: 1:200



BUILDING No.1 - EAST ELEVATION

SCALE: 1:200



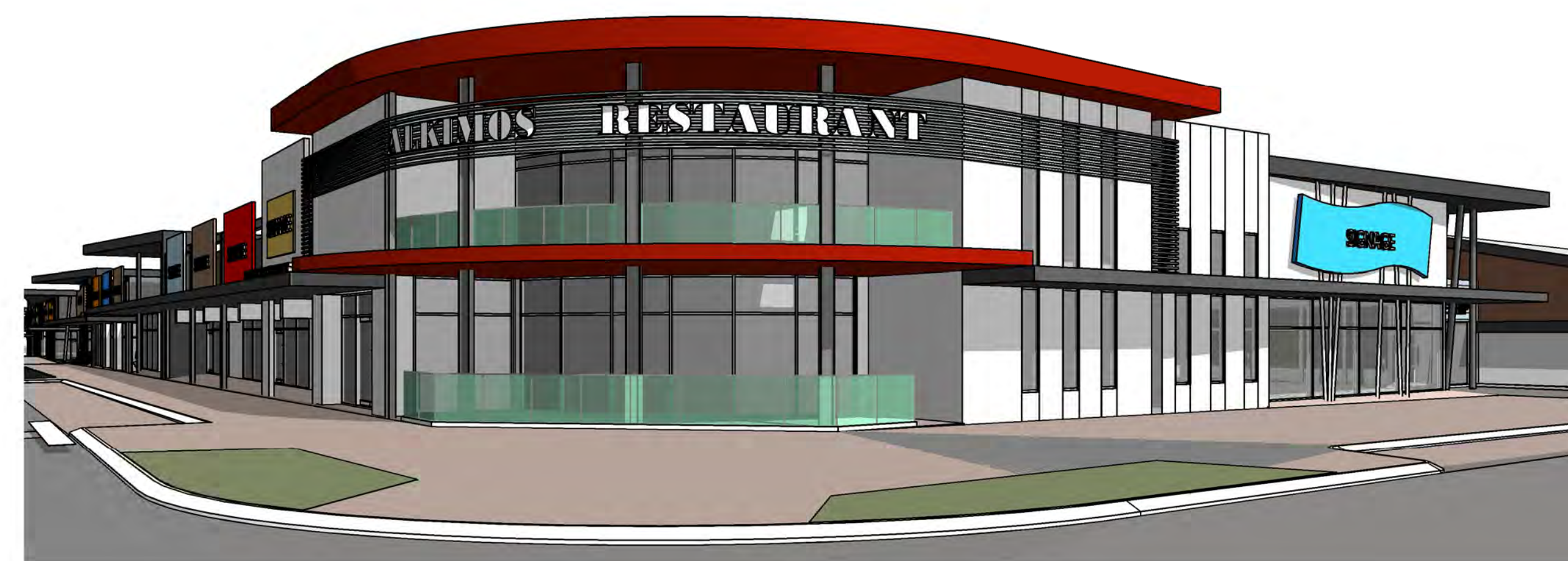
BUILDING No.1 - NORTH ELEVATION

SCALE: 1:200



VIEW FROM INNER CARPARK (SOUTH EAST)

SCALE:



VIEW FROM CNR SANDERLING & TURNSTONE ST (SOUTH WEST)

SCALE:



VIEW FROM SANDERLING ST (SOUTH EAST)

SCALE:



VIEW FROM INNER CARPARK (NORTH EAST)

SCALE:



VIEW FROM TURNSTONE ST (NORTH WEST)

SCALE:

BUILDING No.1 ELEVATIONS & PERSPECTIVE VIEWS

PROPOSED ALKIMOS GATEWAY MIXED USE DEVELOPMENT

LOCATION : THE GATEWAY ALKIMOS BEACH

FOR: MARMION NETWORK PTY. LTD.

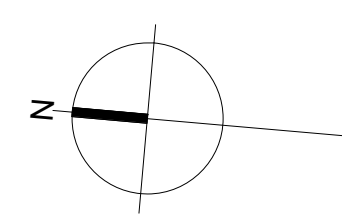
PROJECT No 7690
 SKETCH No SK018
 SHEET No 5
 SCALE 1:200 @ B1
 DATE SEP 2014



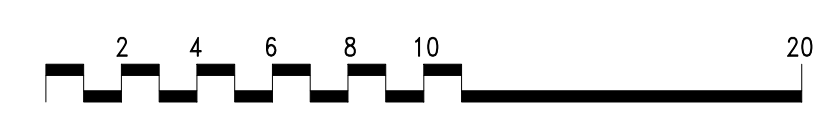
Suite 2, Ground Floor, 437 Roberts Rd,
 Subiaco, Western Australia 6008.
 t : (08) 9381 8511.
 e: msa@meyershircore.com.au
 w: www.meyershircore.com.au

© Meyer Shircore
 & Associates
 ACN 115 189 216





BUILDING No.2 GROUND FLOOR PLAN
SCALE: 1 : 200



PROPOSED ALKIMOS GATEWAY MIXED USE DEVELOPMENT

LOCATION : THE GATEWAY ALKIMOS BEACH

FOR: MARMION NETWORK PTY. LTD.

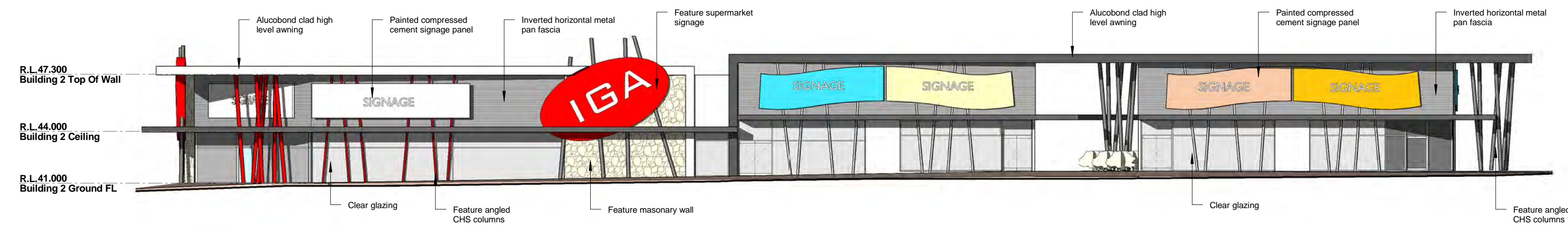
PROJECT No 7690
SKETCH No SK018
SHEET No 6
SCALE 1 : 200 @ B1
DATE 10/10/14



Suite 2, Ground Floor, 437 Roberts Rd,
Subiaco, Western Australia 6008.
t : (08) 9381 8511.
e: msa@meyershircore.com.au.
w: www.meyershircore.com.au

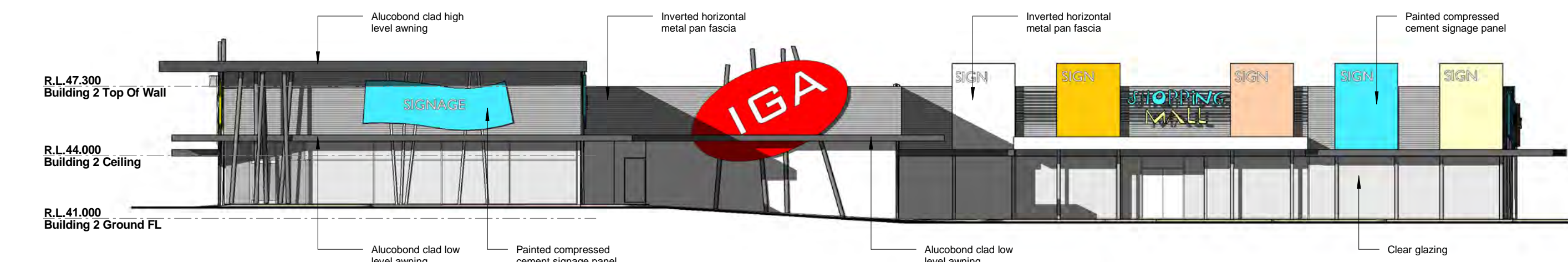
© Meyer Shircore
& Associates
ACN 115 189 216





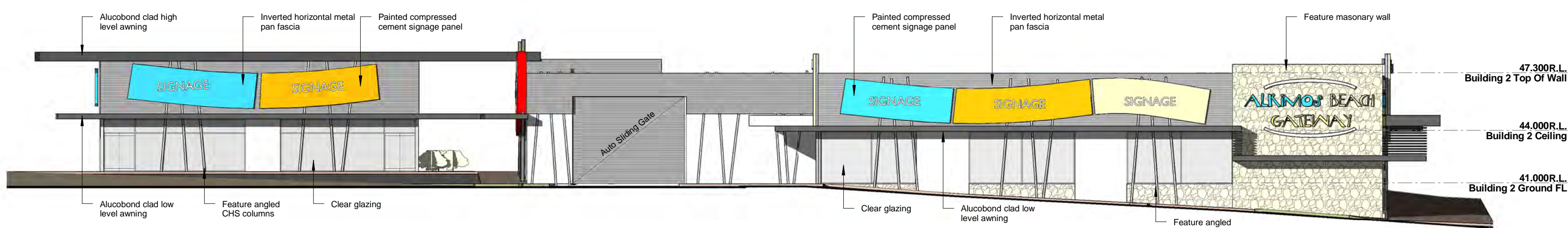
BUILDING No.2 - WEST ELEVATION (TURNSTONE STREET)

SCALE: 1: 200



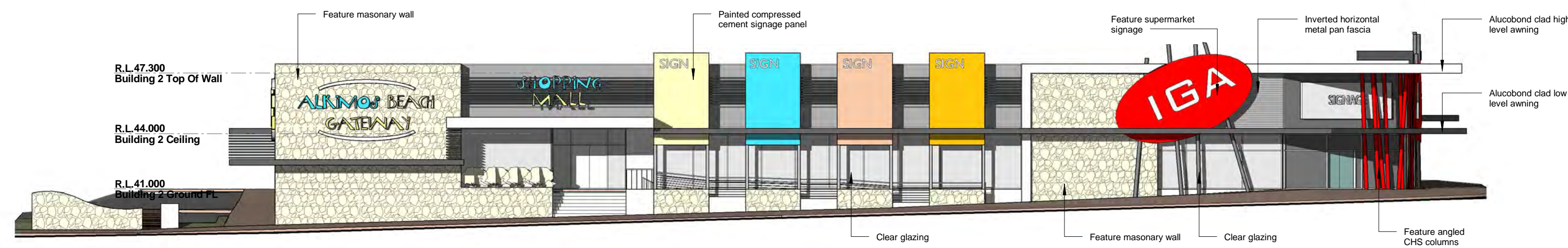
BUILDING No.2 - SOUTH ELEVATION

SCALE: 1: 200



BUILDING No.2 - EAST ELEVATION

SCALE: 1: 200



BUILDING No.2 - NORTH ELEVATION (GRACEFUL BOULEVARD)

SCALE: 1: 200



VIEW FROM CNR GRACEFUL BLVD & TRUNSTONE ST (NORTH WEST)

SCALE:



VIEW FROM INNER CARPARK (SOUTH EAST)

SCALE:



VIEW FROM INNER CARPARK (SOUTH EAST)

SCALE:



VIEW FROM GRACEFUL BLVD (NORTH EAST)

SCALE:



VIEW FROM TURNSTONE ST (SOUTH WEST)

SCALE:

BUILDING No.2 ELEVATIONS & PERSPECTIVE VIEWS

PROPOSED ALKIMOS GATEWAY MIXED USE DEVELOPMENT

LOCATION : THE GATEWAY ALKIMOS BEACH

FOR: MARMION NETWORK PTY. LTD.

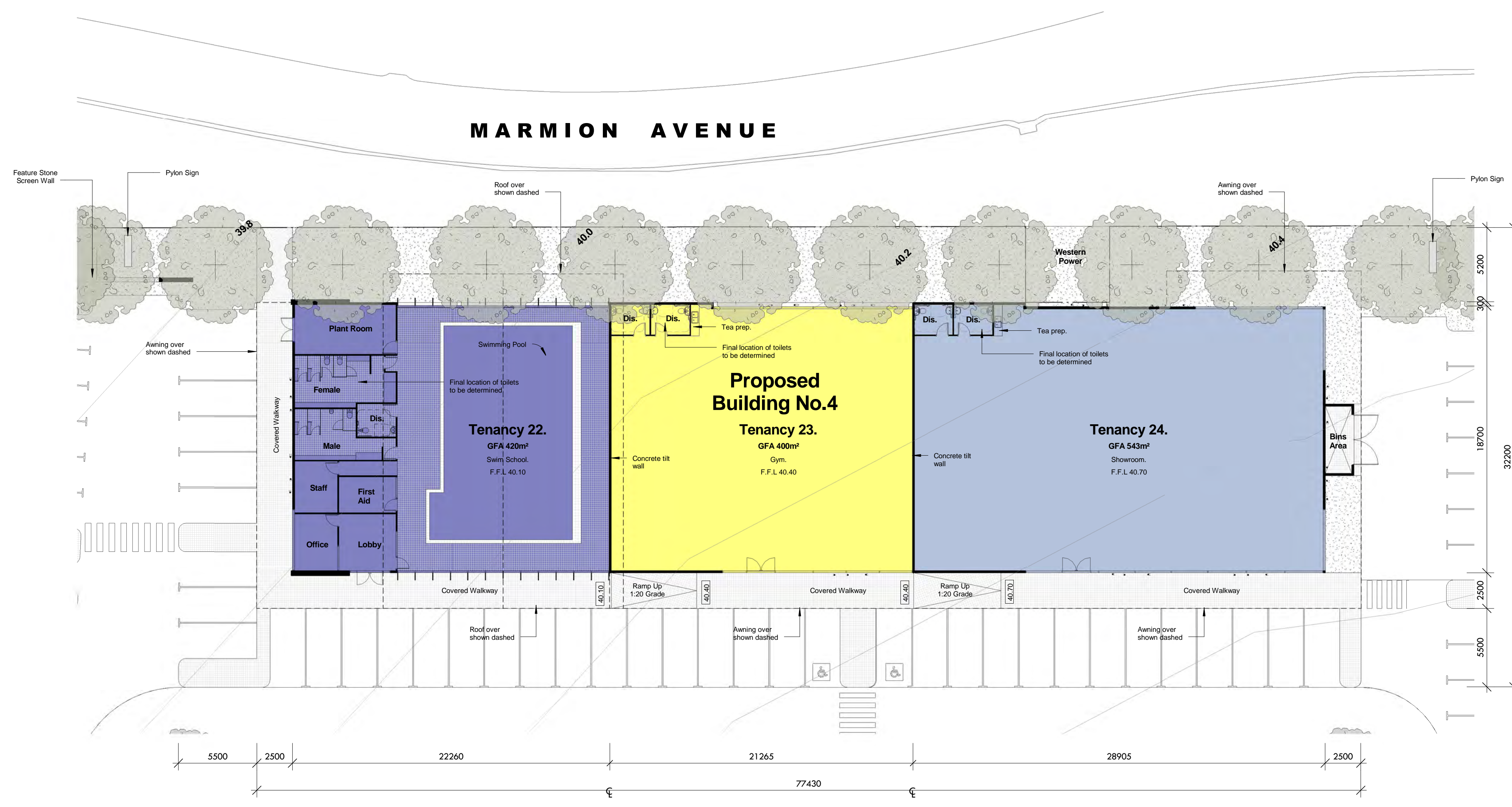
PROJECT No 7690
 SKETCH No SK018
 SHEET No 7
 SCALE 1: 200 @ B1
 DATE SEP 2014



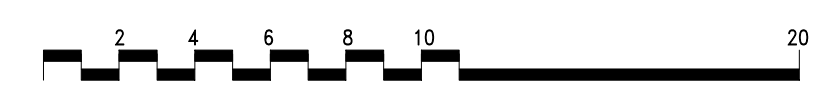
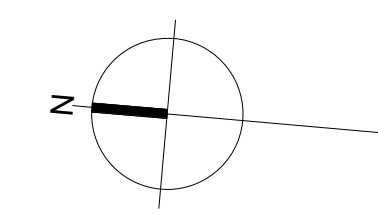
Suite 2, Ground Floor, 437 Roberts Rd,
 Subiaco, Western Australia 6008.
 t: (08) 9381 8511.
 e: msa@meyershircore.com.au.
 w: www.meyershircore.com.au

© Meyer Shircore
 & Associates
 ACN 115 189 216





BUILDING No.4 GROUND FLOOR PLAN
SCALE: 1 : 200



PROPOSED ALKIMOS GATEWAY MIXED USE DEVELOPMENT

LOCATION : THE GATEWAY ALKIMOS BEACH

FOR: MARMION NETWORK PTY. LTD.

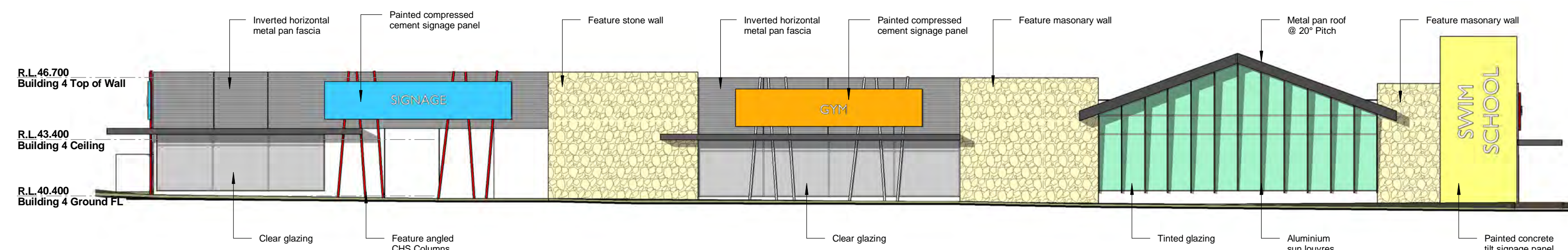
PROJECT No 7690
SKETCH No SK018
SHEET No 9
SCALE 1 : 200 @ B1
DATE 10/10/14



Suite 2, Ground Floor, 437 Roberts Rd,
Subiaco, Western Australia 6008.
t : (08) 9381 8511.
e: msa@meyershircore.com.au.
w: www.meyershircore.com.au

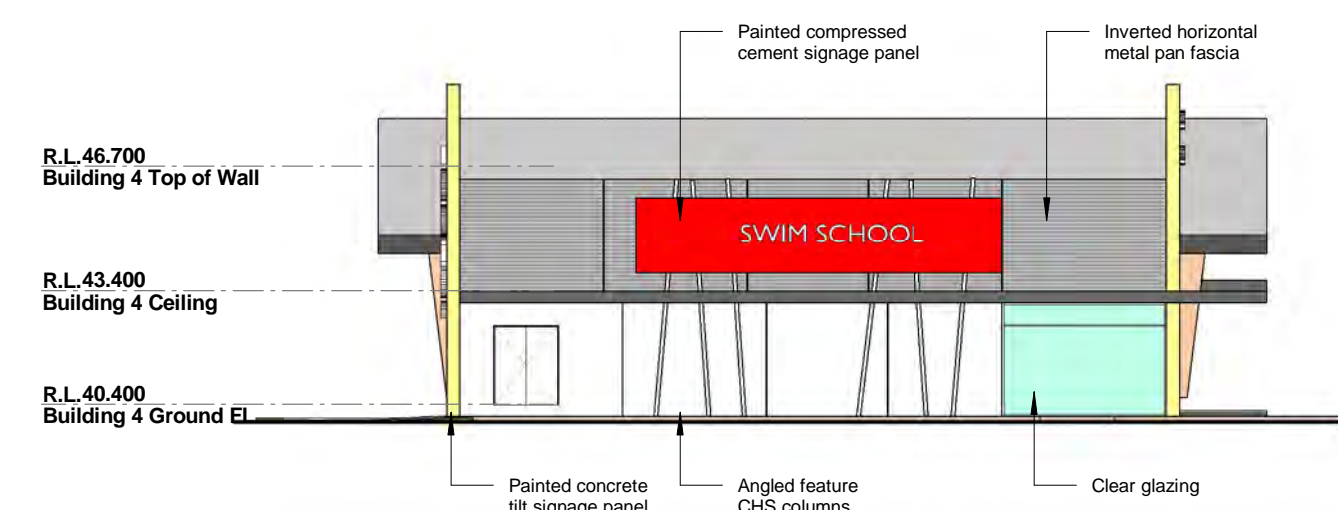
© Meyer Shircore
& Associates
ACN 115 189 216





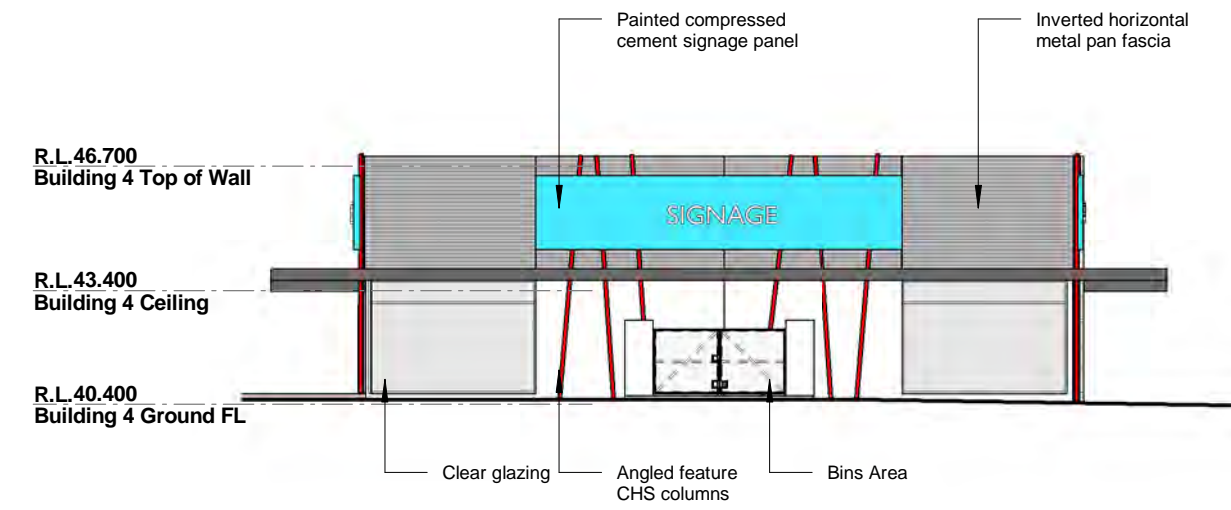
BUILDING No.4 - EAST ELEVATION (MARMION AVENUE)

SCALE: 1 : 200



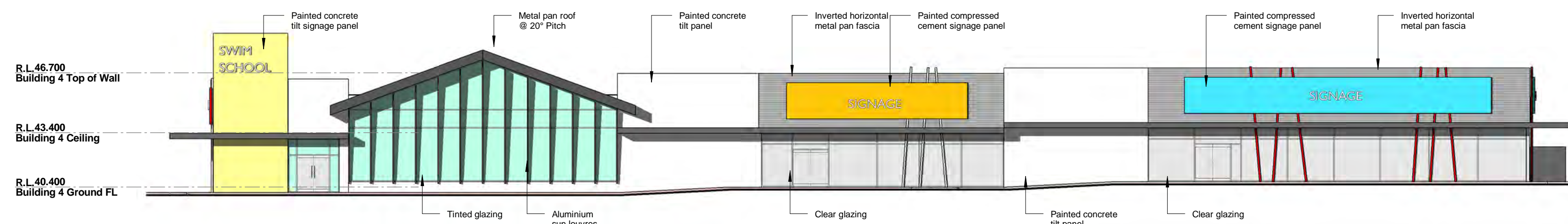
BUILDING No.4 - NORTH ELEVATION

SCALE: 1 : 200



BUILDING No.4 - SOUTH ELEVATION

SCALE: 1 : 200



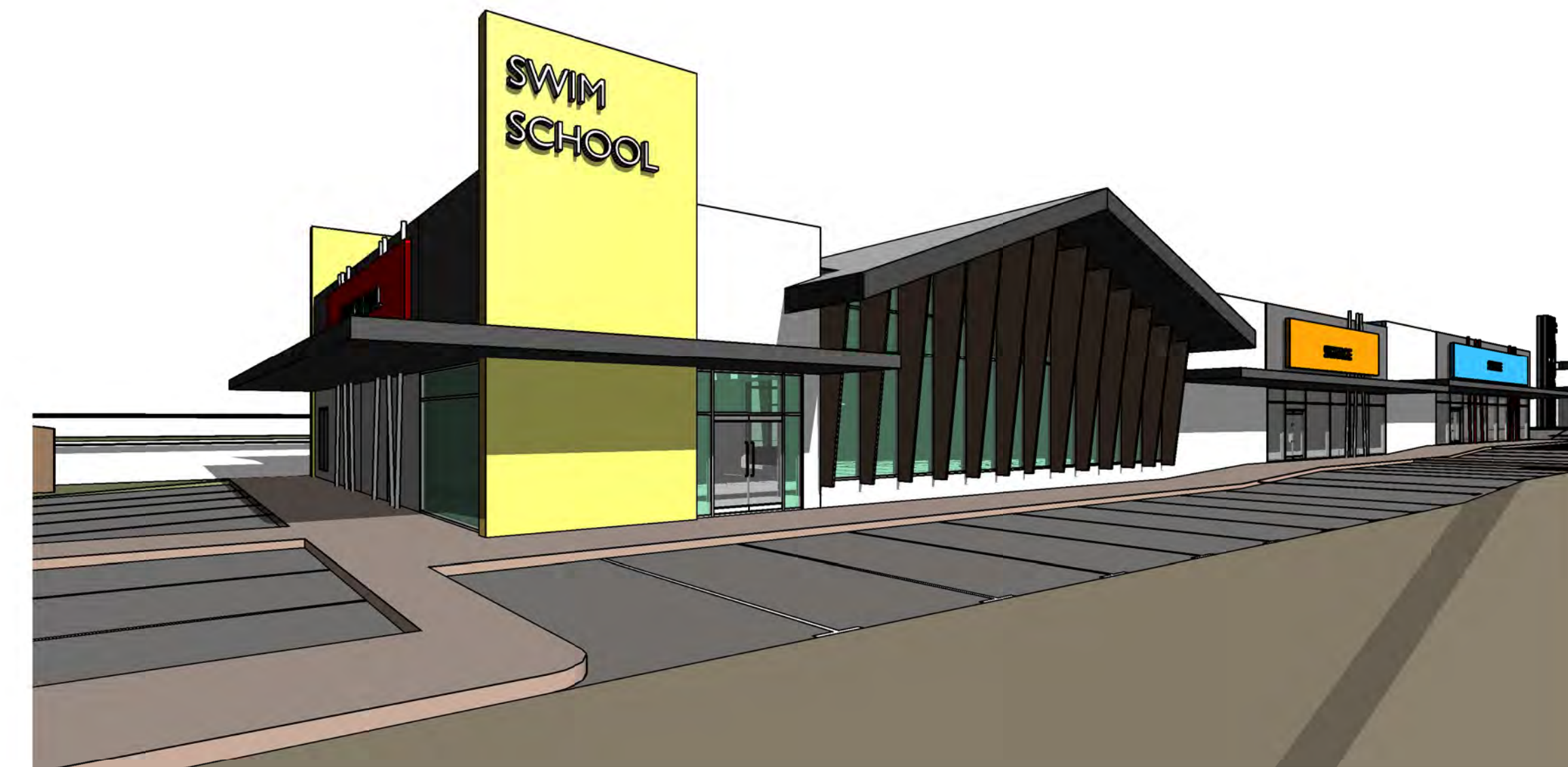
BUILDING No.4 - WEST ELEVATION

SCALE: 1 : 200



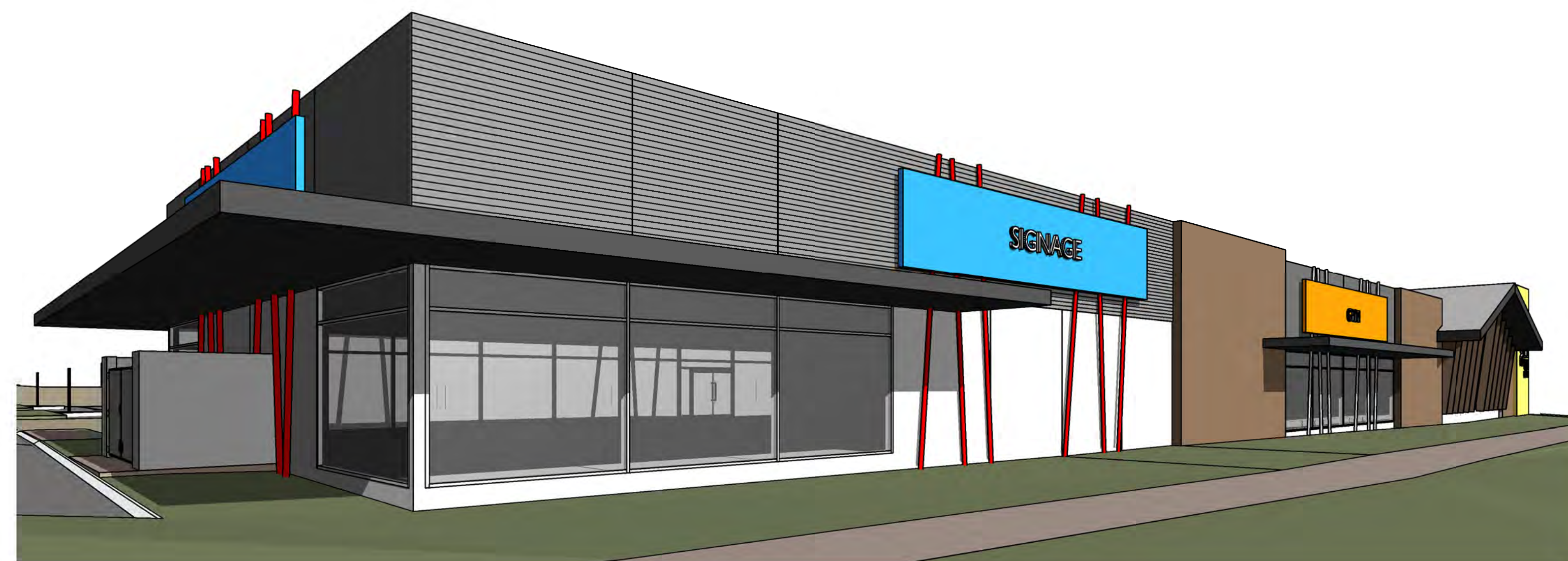
VIEW FROM INNER CARPARK (SOUTH WEST)

SCALE:



VIEW FROM INNER CARPARK (NORTH WEST)

SCALE:



VIEW FROM MARMION AVE (SOUTH EAST)

SCALE:



VIEW FROM MARMION AVE (NORTH EAST)

SCALE:

BUILDING No.4 ELEVATIONS & PERSPECTIVE VIEWS

PROPOSED ALKIMOS GATEWAY MIXED USE DEVELOPMENT

LOCATION : THE GATEWAY ALKIMOS BEACH

FOR: MARMION NETWORK PTY. LTD.

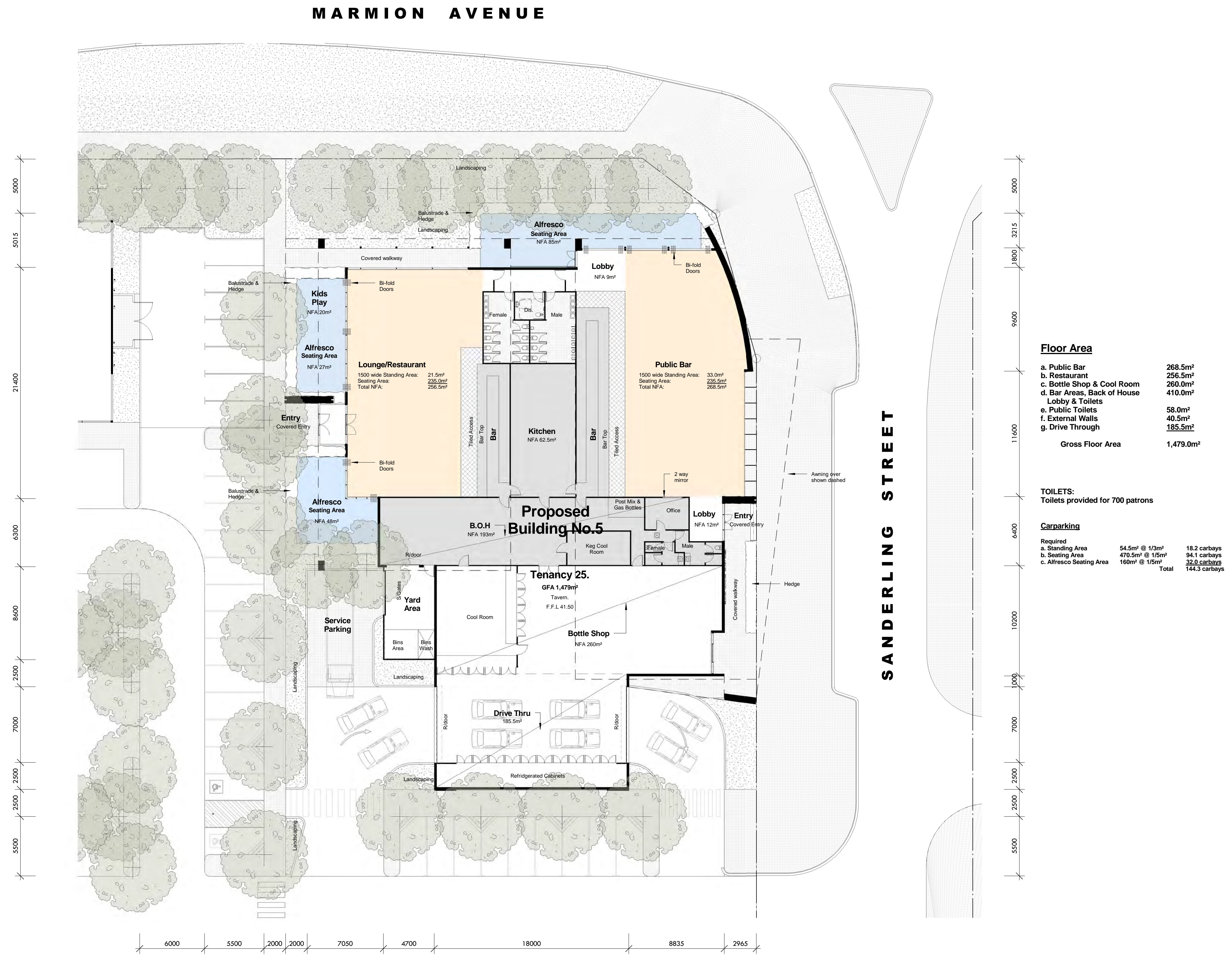
PROJECT No 7690
 SKETCH No SK018
 SHEET No 10
 SCALE 1 : 200 @ B1
 DATE SEP 2014



Suite 2, Ground Floor, 437 Roberts Rd,
 Subiaco, Western Australia 6008.
 t : (08) 9381 8511.
 e: msa@meyershircore.com.au.
 w: www.meyershircore.com.au

© Meyer Shircore
 & Associates
 ACN 115 189 216





Floor Area

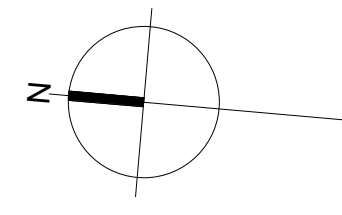
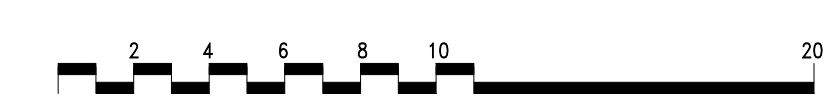
a. Public Bar	268.5m ²
b. Restaurant	256.5m ²
c. Bottle Shop & Cool Room	260.0m ²
d. Bar Areas, Back of House	410.0m ²
Lobby & Toilets	
e. Public Toilets	58.0m ²
f. External Walls	40.5m ²
g. Drive Thru	185.5m ²
Gross Floor Area	1,479.0m²

TOILETS:
Toilets provided for 700 patrons

Carparking

Required		
a. Standing Area	54.5m ² @ 1/3m ²	18.2 carbays
b. Seating Area	470.5m ² @ 1/5m ²	94.1 carbays
c. Alfresco Seating Area	160m ² @ 1/5m ²	32.0 carbays
Total		144.3 carbays

BUILDING No.5 GROUND FLOOR PLAN
SCALE: 1 : 200



PROPOSED ALKIMOS GATEWAY MIXED USE DEVELOPMENT

LOCATION : THE GATEWAY ALKIMOS BEACH

FOR: MARMION NETWORK PTY. LTD.

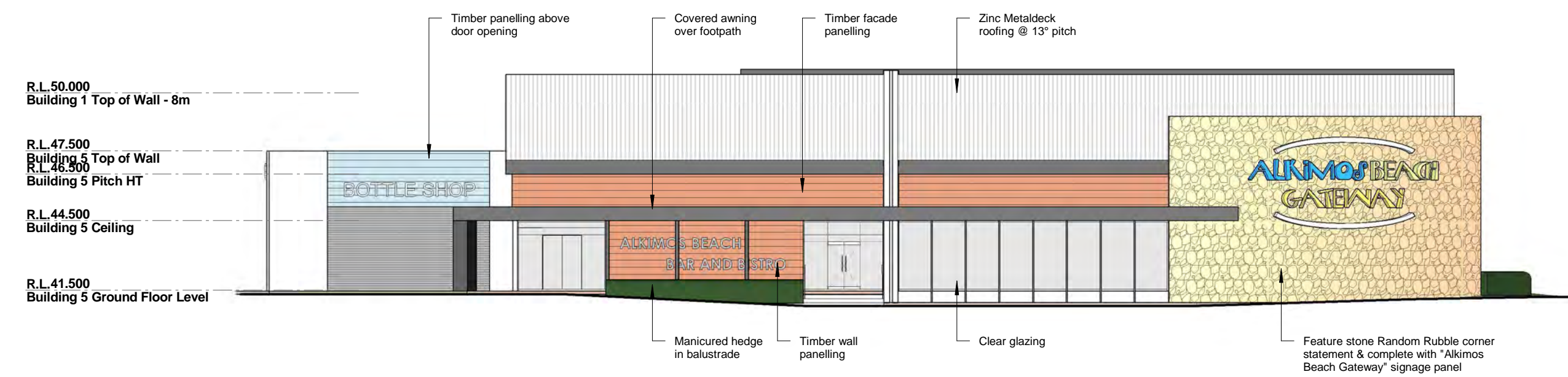
PROJECT No 7690
SKETCH No SK018
SHEET No 11
SCALE 1 : 200 @ B1
DATE 10/13/14



Suite 2, Ground Floor, 437 Roberts Rd,
Subiaco, Western Australia 6008.
t : (08) 9381 8511.
e: msa@meyershircore.com.au.
w: www.meyershircore.com.au

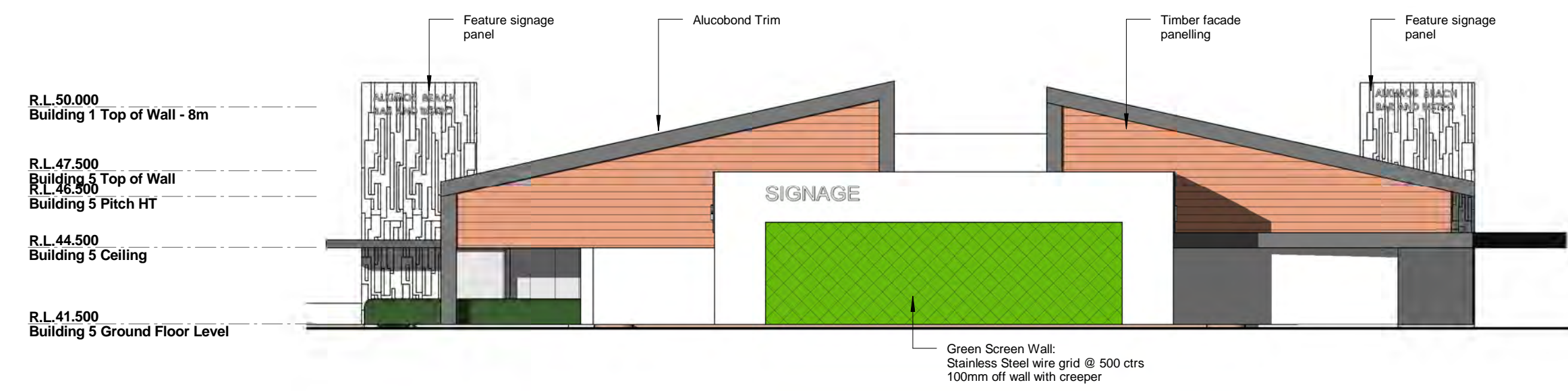
© Meyer Shircore
& Associates
ACN 115 189 216





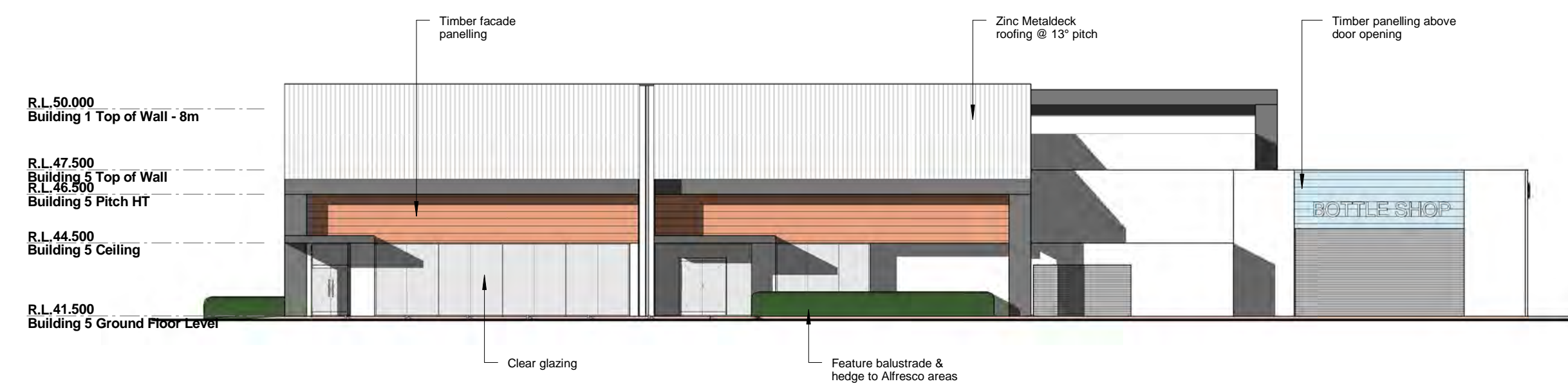
BUILDING No.5 - SOUTH ELEVATION (SANDERLING STREET)

SCALE: 1 : 200



BUILDING No.5 - WEST ELEVATION

SCALE: 1 : 200



BUILDING No.5 - NORTH ELEVATION

SCALE: 1 : 200



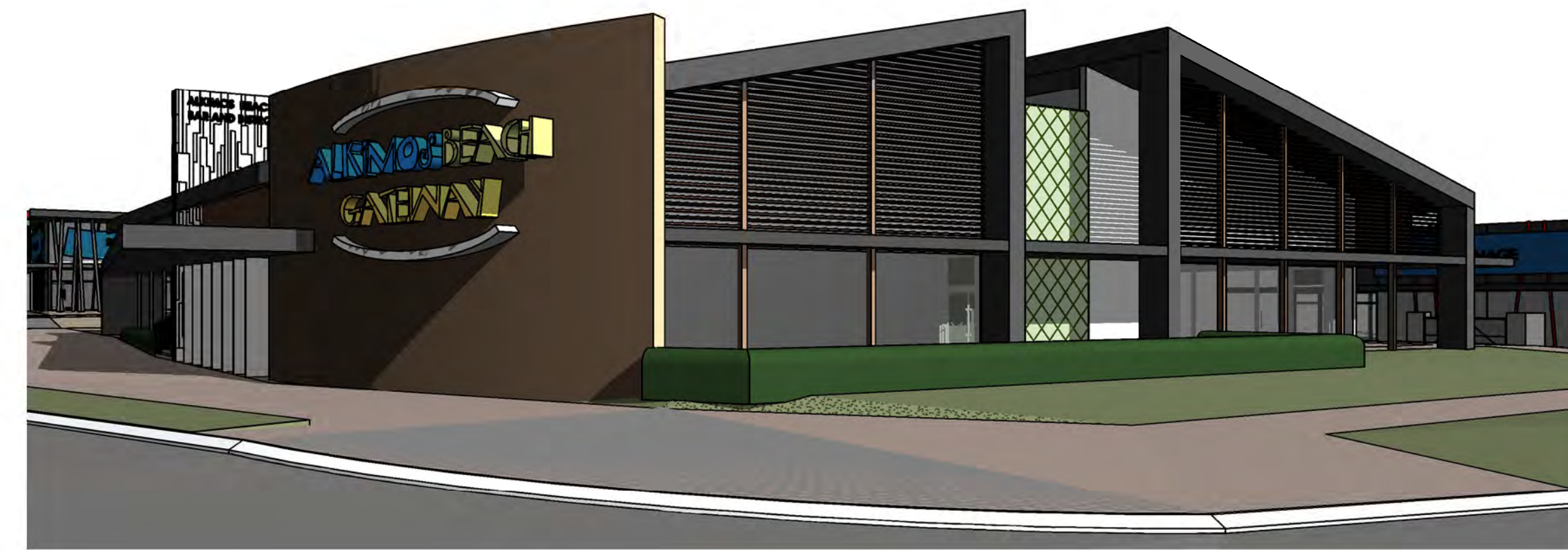
BUILDING No.5 - EAST ELEVATION (MARMION AVENUE)

SCALE: 1 : 200



VIEW FROM SANDERLING ST (SOUTH WEST)

SCALE:



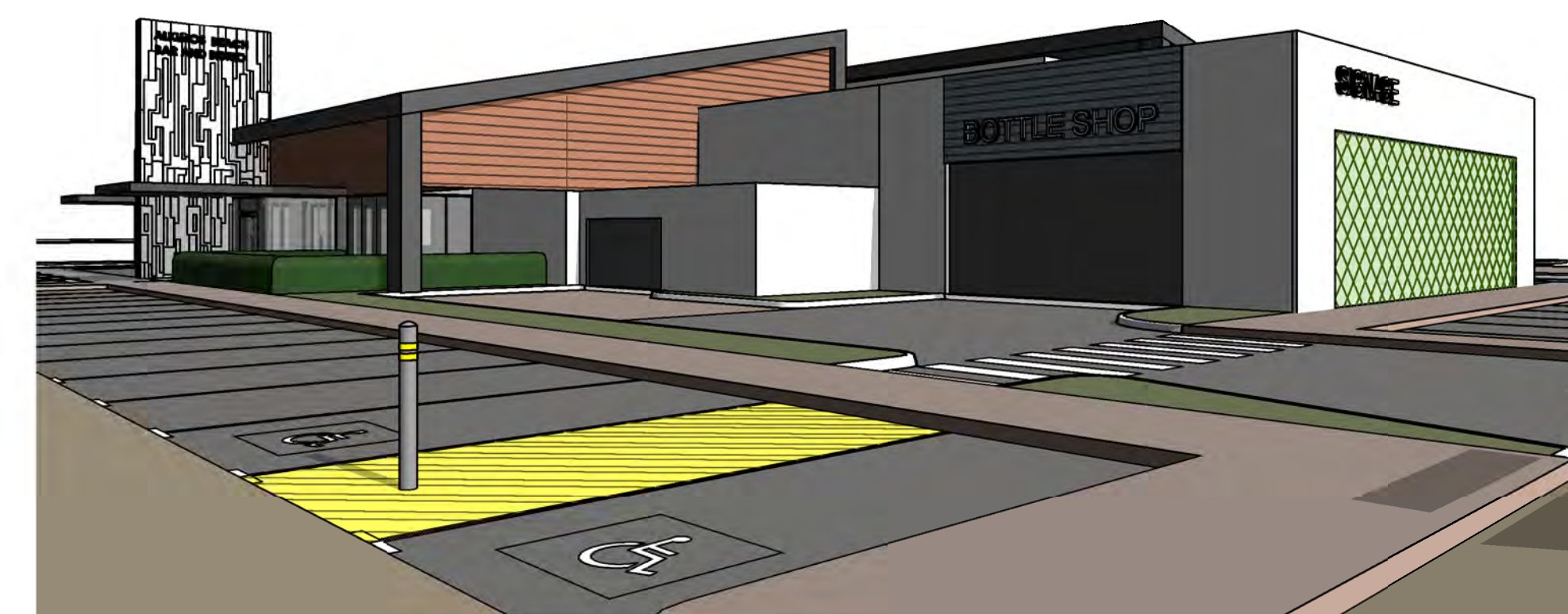
VIEW FROM SANDERLING ST (SOUTH EAST)

SCALE:



VIEW FROM INNER CARPARK (NORTH)

SCALE:



VIEW FROM INNER CARPARK (NORTH WEST)

SCALE:

PROPOSED ALKIMOS GATEWAY MIXED USE DEVELOPMENT

LOCATION : THE GATEWAY ALKIMOS BEACH

FOR: MARMION NETWORK PTY. LTD.

PROJECT No 7690
 SKETCH No SK018
 SHEET No 12
 SCALE 1 : 200 @ B1
 DATE 10/13/14



Suite 2, Ground Floor, 437 Roberts Rd,
 Subiaco, Western Australia 6008.
 t : (08) 9381 8511.
 e: msa@meyershircore.com.au
 w: www.meyershircore.com.au

© Meyer Shircore
 & Associates
 ACN 115 189 216



BUILDING No.5 ELEVATIONS & PERSPECTIVE VIEWS



ARTISTS IMPRESSION FROM CNR GRACEFUL BOULEVARD & TURNSTONE STREET

PROPOSED ALKIMOS GATEWAY MIXED USE DEVELOPMENT

LOCATION : THE GATEWAY ALKIMOS BEACH

FOR: MARMION NETWORK PTY. LTD.

PROJECT No 7690
 SKETCH No SK018
 SHEET No 13
 SCALE @ B1
 DATE 10/17/14



Suite 2, Ground Floor, 437 Roberts Rd,
 Subiaco, Western Australia 6008.
 t : (08) 9381 8511.
 e: msa@meyershircore.com.au.
 w: www.meyershircore.com.au

© Meyer Shircore
 & Associates
 ACN 115 189 216





ARTISTS IMPRESSION FROM CNR SANDERLING STREET & TURNSTONE STREET

PROPOSED ALKIMOS GATEWAY MIXED USE DEVELOPMENT

LOCATION : THE GATEWAY ALKIMOS BEACH

FOR: MARMION NETWORK PTY. LTD.

PROJECT No 7690
 SKETCH No SK018
 SHEET No 14
 SCALE @ B1
 DATE 10/17/14



Suite 2, Ground Floor, 437 Roberts Rd,
 Subiaco, Western Australia 6008.
 t : (08) 9381 8511.
 e: msa@meyershircore.com.au.
 w: www.meyershircore.com.au

© Meyer Shircore
 & Associates
 ACN 115 189 216





ARTISTS IMPRESSION FROM CNR SANDERLING STREET & MARMION AVENUE

PROPOSED ALKIMOS GATEWAY MIXED USE DEVELOPMENT

LOCATION : THE GATEWAY ALKIMOS BEACH

FOR: MARMION NETWORK PTY. LTD.

PROJECT No 7690
 SKETCH No SK018
 SHEET No 15
 SCALE @ B1
 DATE 10/17/14



Suite 2, Ground Floor, 437 Roberts Rd,
 Subiaco, Western Australia 6008.
 t : (08) 9381 8511.
 e: msa@meyershircore.com.au.
 w: www.meyershircore.com.au

© Meyer Shircore
 & Associates
 ACN 115 189 216





ARTISTS IMPRESSION FROM MARMION AVENUE

PROPOSED ALKIMOS GATEWAY MIXED USE DEVELOPMENT

LOCATION : THE GATEWAY ALKIMOS BEACH

FOR: MARMION NETWORK PTY. LTD.

PROJECT No 7690
 SKETCH No SK018
 SHEET No 16
 SCALE @ B1
 DATE 10/17/14



Suite 2, Ground Floor, 437 Roberts Rd,
 Subiaco, Western Australia 6008.
 t : (08) 9381 8511.
 e: msa@meyershircore.com.au.
 w: www.meyershircore.com.au

© Meyer Shircore
 & Associates
 ACN 115 189 216





ARTISTS IMPRESSION FROM GRACEFUL BOULEVARD

PROPOSED ALKIMOS GATEWAY MIXED USE DEVELOPMENT

LOCATION : THE GATEWAY ALKIMOS BEACH

FOR: MARMION NETWORK PTY. LTD.

PROJECT No 7690
 SKETCH No SK018
 SHEET No 17
 SCALE @ B1
 DATE 10/17/14



Suite 2, Ground Floor, 437 Roberts Rd,
 Subiaco, Western Australia 6008.
 t : (08) 9381 8511.
 e: msa@meyershircore.com.au.
 w: www.meyershircore.com.au

© Meyer Shircore
 & Associates
 ACN 115 189 216

