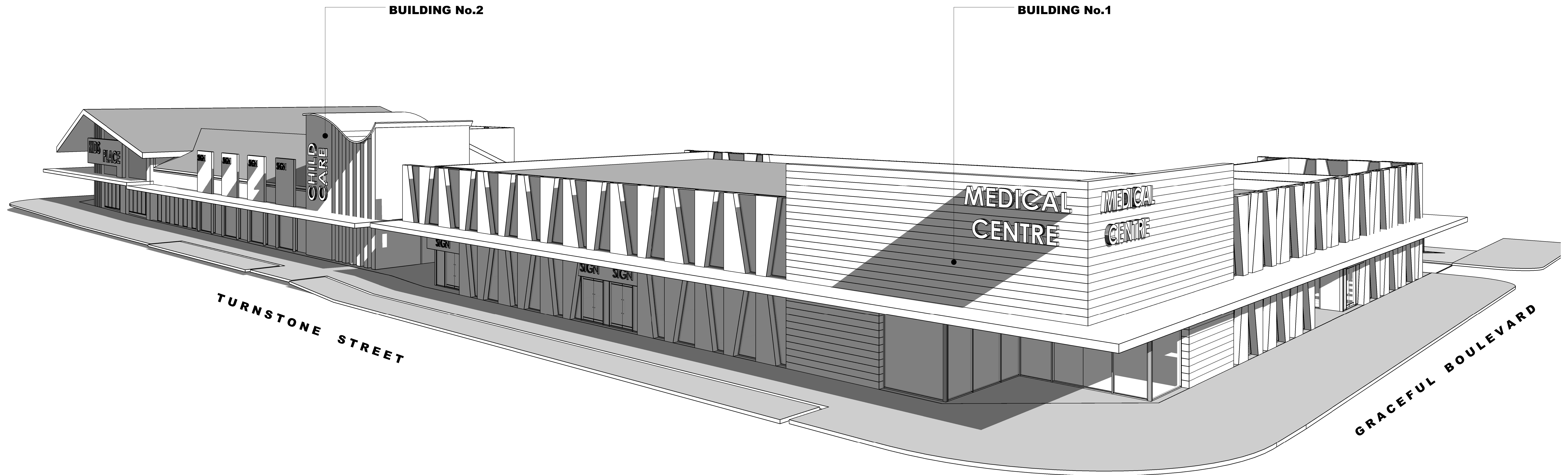


PROPOSED MEDICAL, CHILDCARE & PLAY CENTRE

LOCATION : THE GATEWAY ALKIMOS BEACH

MSA PROJECT NUMBER: 7801



DRAWING LIST

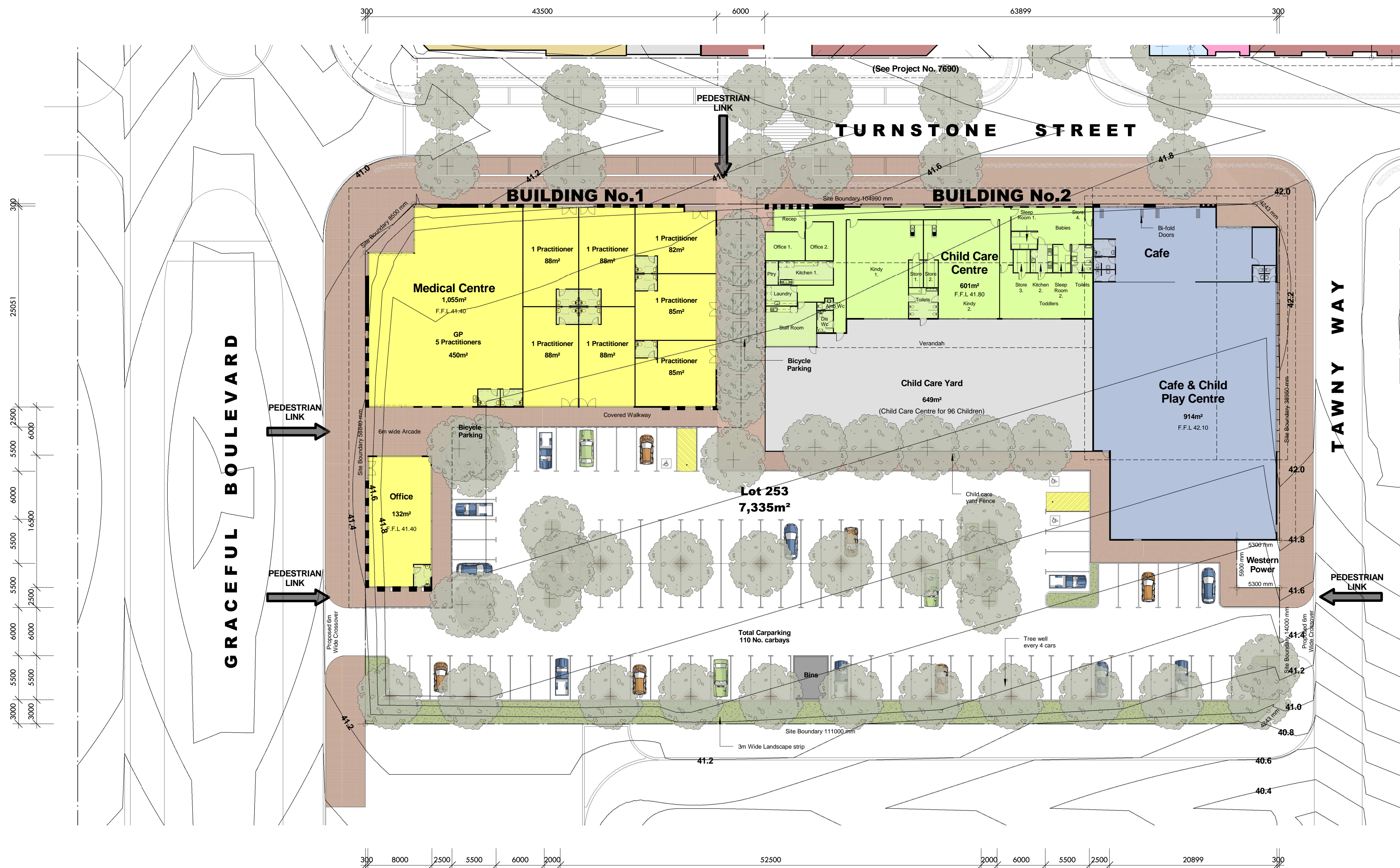
SHEET 1 -	COVER SHEET
SHEET 2 -	SITE SURVEY
SHEET 3 -	SITE PLAN
SHEET 4 -	GROUND FLOOR PLAN (BUILDING No.1)
SHEET 5 -	GROUND FLOOR PLAN (BUILDING No.2)
SHEET 6 -	ELEVATIONS & PERSPECTIVES (BUILDING No.1 & 2)
SHEET 7 -	ARTISTS IMPRESSION
SHEET 8 -	ARTISTS IMPRESSION
SHEET 9 -	ARTISTS IMPRESSION

SK003
10/20/14
1

7801

Member
Australian Institute
of Architects
meyer shircore
and associates
ARCHITECTS
1963|2013
50
YEARS

© Meyer Shircore & Associates ACN 115 189 216
Suite 2, Ground Floor, 437 Roberts Road Subiaco WA 6008
PO Box 1294 Subiaco WA 6904
t: 08 9381 8511 f: 08 9388 1399



SITE PLAN
SCALE: 1 : 300

Site Criteria

1. Site Area	7,334.5m²
2. Floor Area	
a. Medical Centre	1,054m ²
b. Child care	599m ²
i. Building	651m ²
ii. Yard	914m ²
c. Cafe & Child Play	132m ²
d. Office	132m ² @ 1/30
Total	3,350m²
3. Carparking	
Car Required	
a. Medical	12 Pract. x 5 cars
b. Child care	96 children
c. Child Play	5 Staff
d. Office	132m ² @ 1/30
Total	60 carbays
Cars Provided	110 Cars

4. Landscape	
Landscape Required	8% Required 586.76m ²
Landscape Provided	
a. Landscape	489.8m ²
b. Child Care Yard	643m ²
c. Hard Landscape	670.3m ²
Total	1809.1 carbays (or 24.6%)

5. Carpark Trees	
Trees Required	
a. 110 cars	= 28 Trees
Trees Provided	
a. 29 Trees (Excludes Trees in Pedestrian link)	

PROPOSED MEDICAL, CHILDCARE & PLAY CENTRE

LOCATION : THE GATEWAY ALKIMOS BEACH

FOR: MARMION NETWORK PTY. LTD.

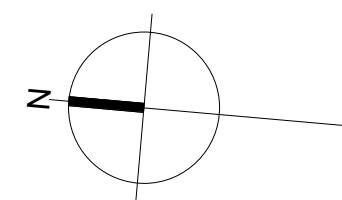
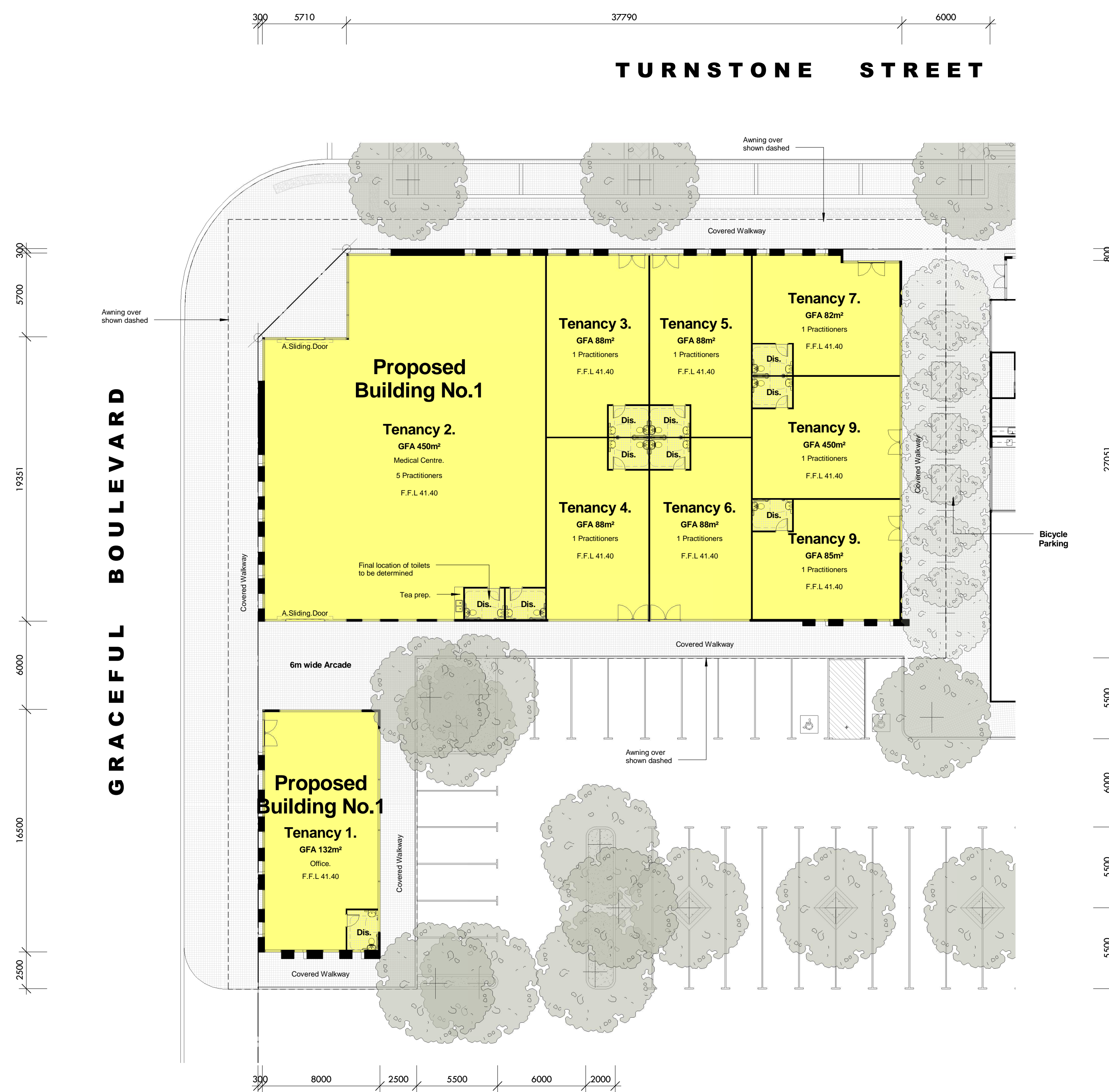
PROJECT No 7801
SKETCH No SK003
SHEET No 3
SCALE As indicated @ B1
DATE SEP 2014



Suite 2, Ground Floor, 437 Roberts Rd,
Subiaco, Western Australia 6008.
t : (08) 9381 8511.
e: msa@meyershircore.com.au
w: www.meyershircore.com.au

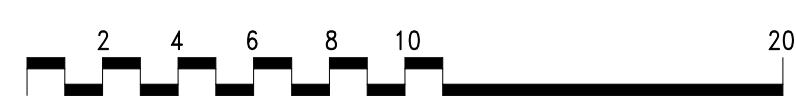
© Meyer Shircore
& Associates
ACN 115 189 216





BUILDING No.1 GROUND FLOOR PLAN

SCALE: 1:200



PROPOSED MEDICAL, CHILDCARE & PLAY CENTRE

LOCATION : THE GATEWAY ALKIMOS BEACH

FOR: MARMION NETWORK PTY. LTD.

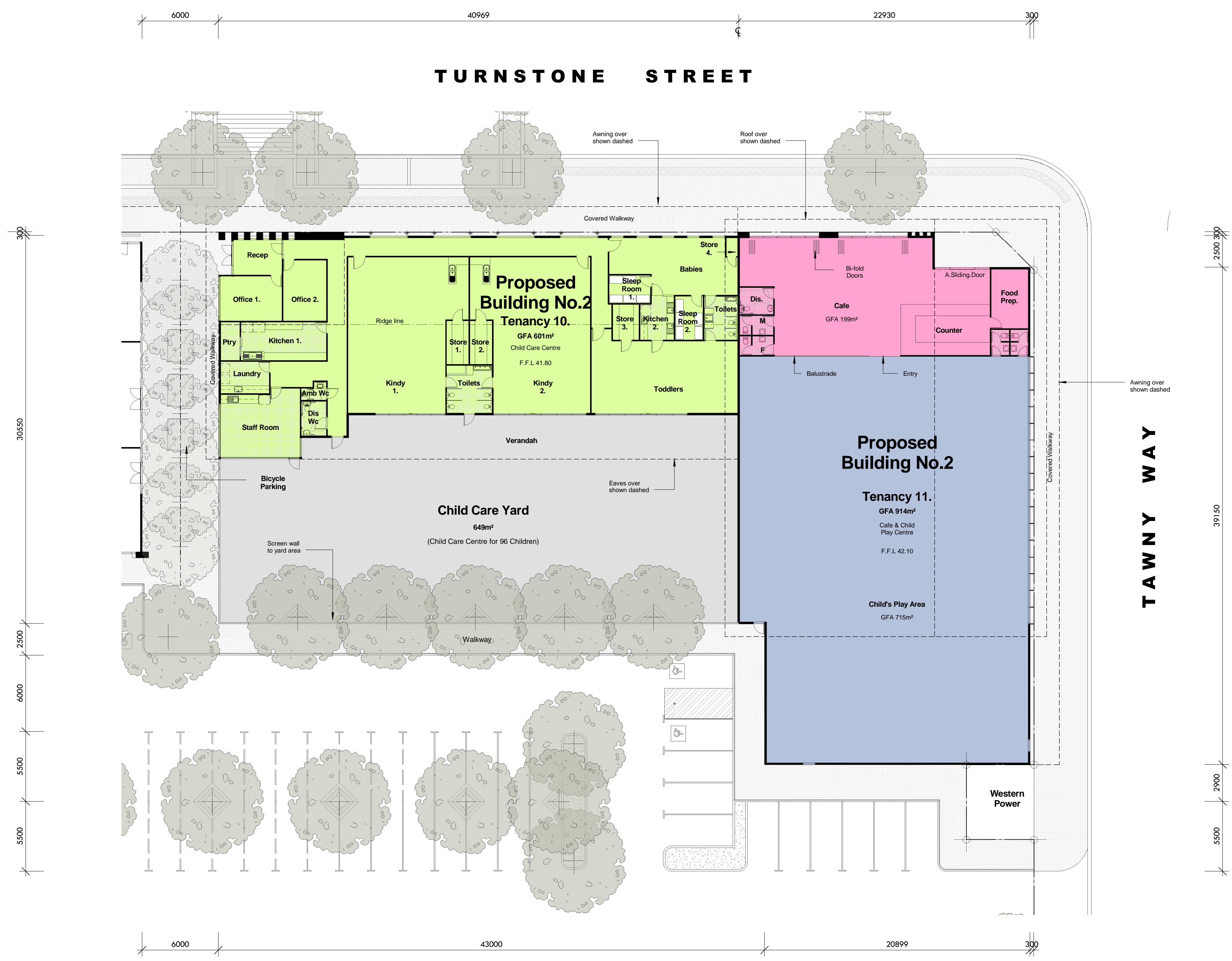
PROJECT No 7801
SKETCH No SK003
SHEET No 4
SCALE 1 : 200 @ B1
DATE NOV 2013



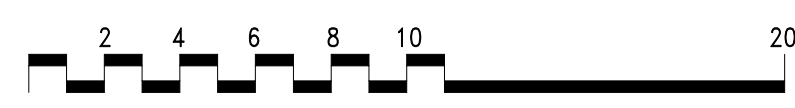
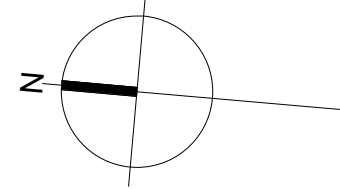
Suite 2, Ground Floor, 437 Roberts Rd,
Subiaco, Western Australia 6008.
t : (08) 9381 8511.
e: msa@meyershircore.com.au.
w: www.meyershircore.com.au

© Meyer Shircore
& Associates
ACN 115 189 216





BUILDING No.2 GROUND FLOOR PLAN
SCALE: 1:200



PROPOSED MEDICAL, CHILDCARE & PLAY CENTRE

LOCATION : THE GATEWAY ALKIMOS BEACH

FOR: MARMION NETWORK PTY. LTD.

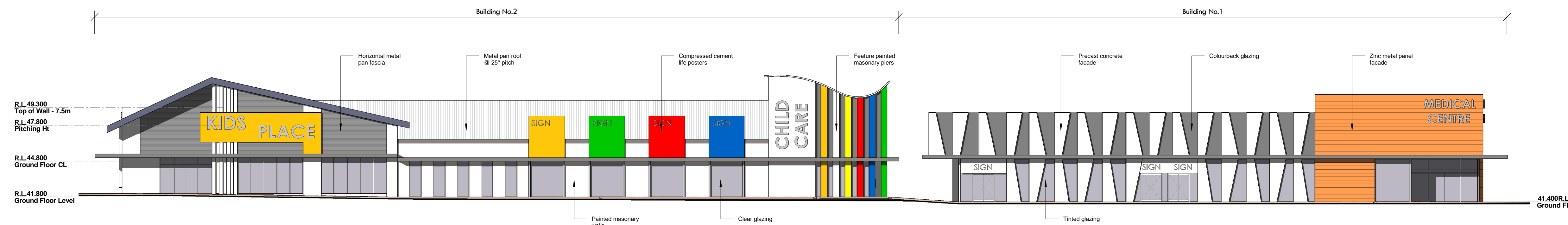
PROJECT No 7801
SKETCH No SK003
SHEET No 5
SCALE 1 : 200 @ B1
DATE JUNE 2014



Suite 2, Ground Floor, 437 Roberts Rd,
Subiaco, Western Australia 6008.
t : (08) 9381 8511.
e: msa@meyershircore.com.au.
w: www.meyershircore.com.au

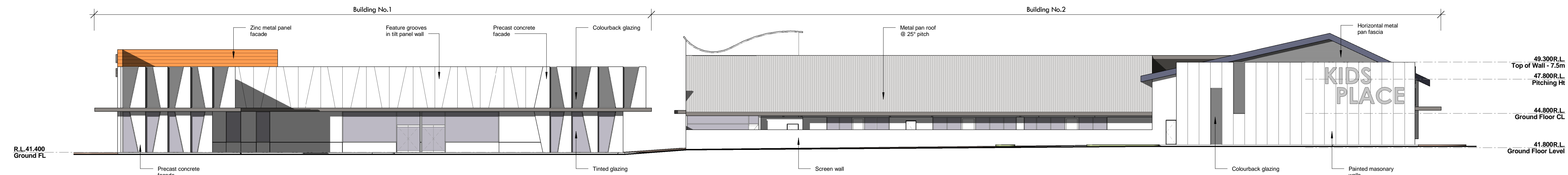
© Meyer Shircore
& Associates
ACN 115 189 216





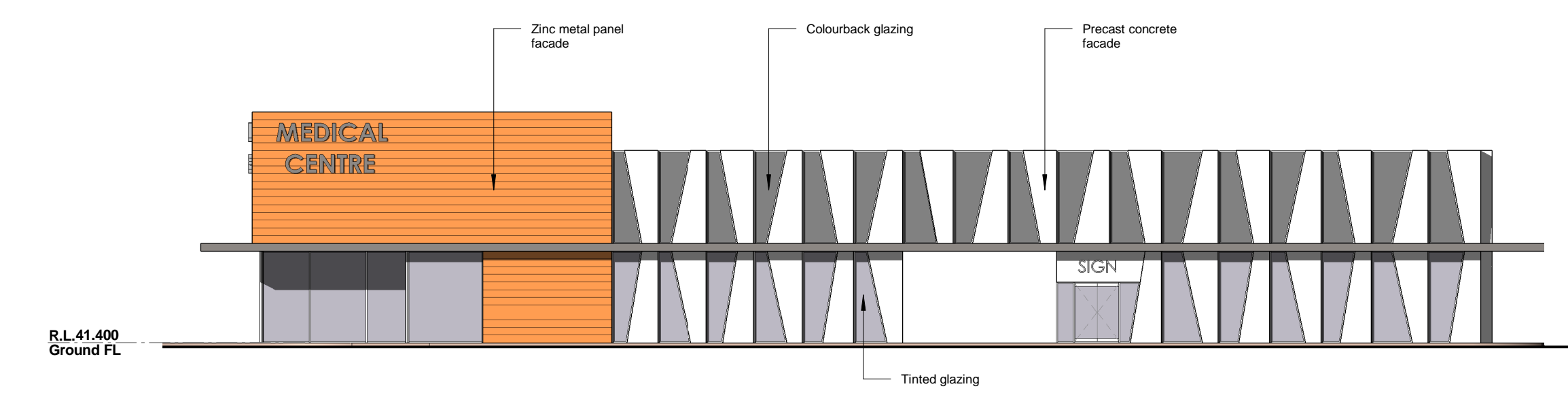
EAST ELEVATION (TURNSTONE STREET)

SCALE: 1:200



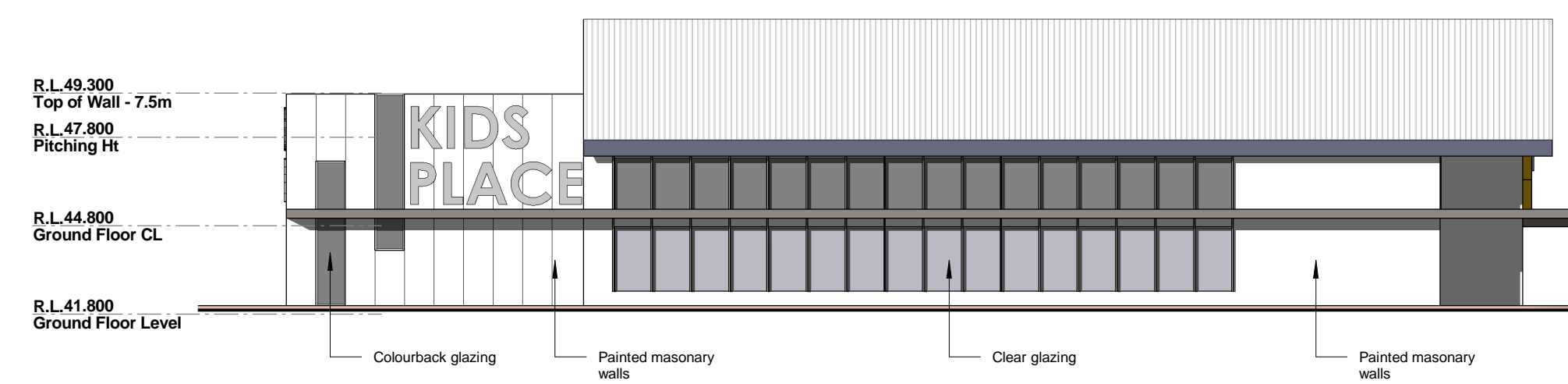
WEST ELEVATION

SCALE: 1:200



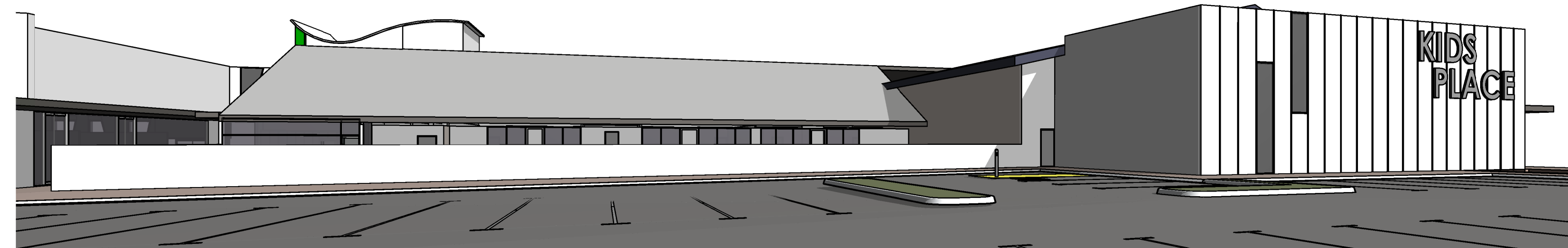
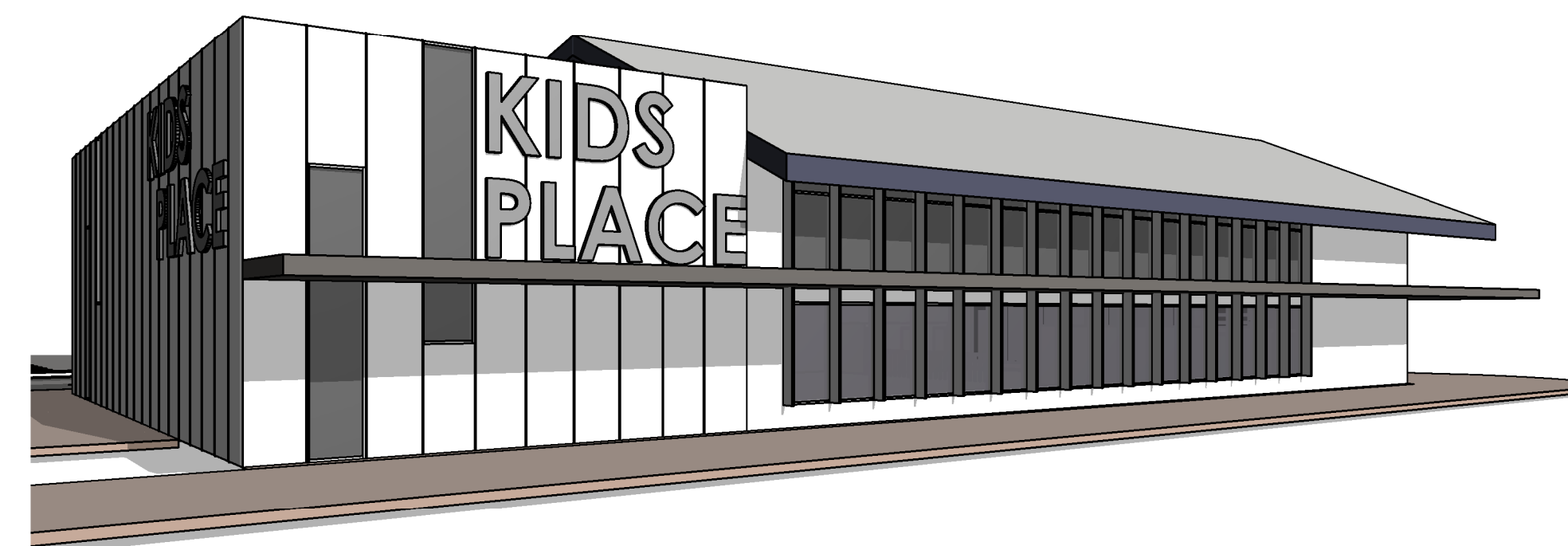
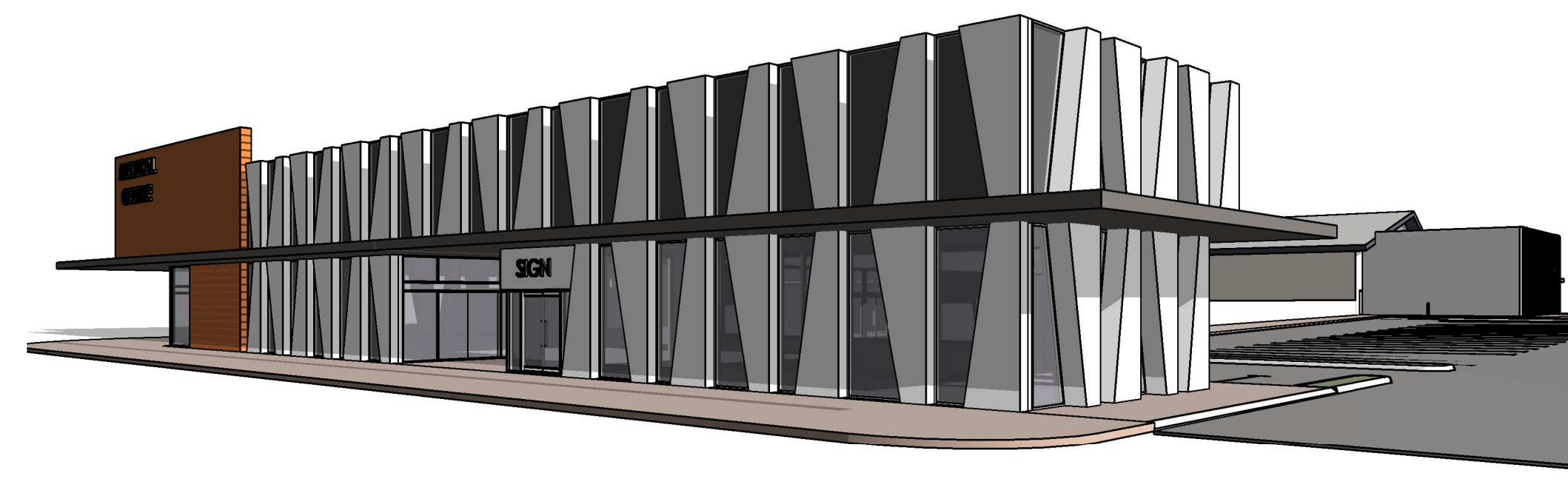
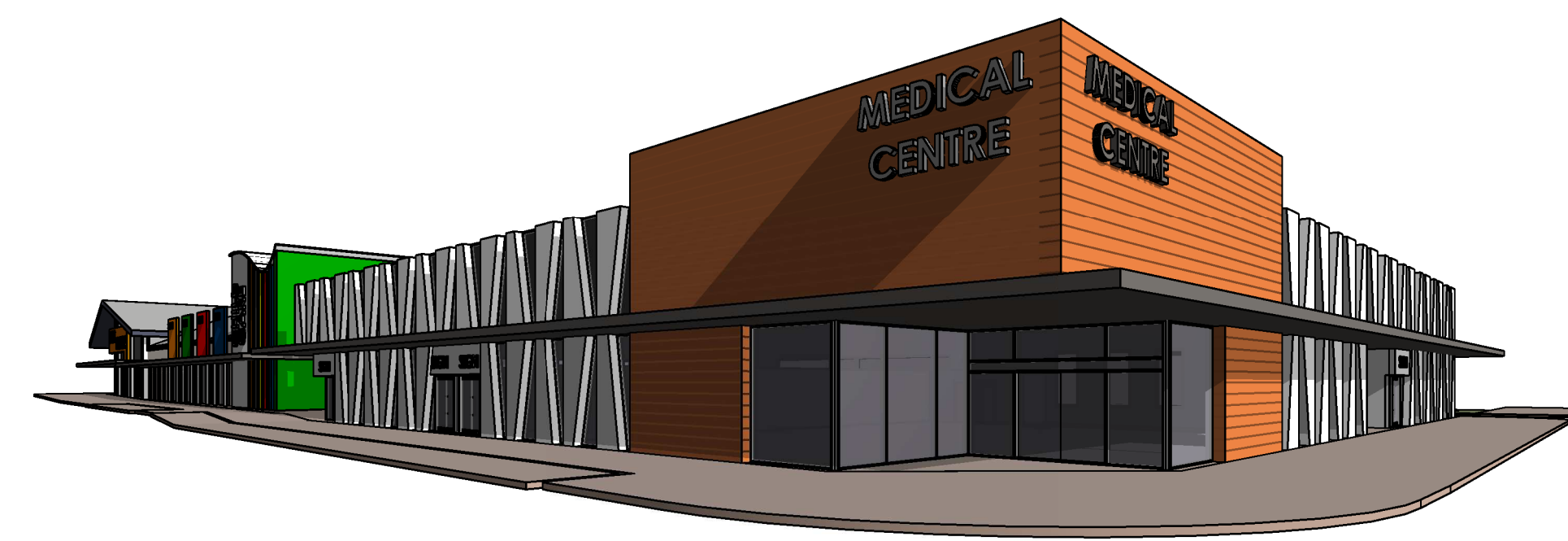
NORTH ELEVATION (GRACEFUL BOULEVARD)

SCALE: 1:200



SOUTH ELEVATION (TAWNY WAY)

SCALE: 1:200



BUILDING No.1 & No.2 ELEVATIONS & PERSPECTIVE VIEWS

PROPOSED MEDICAL, CHILDCARE & PLAY CENTRE

LOCATION : THE GATEWAY ALKIMOS BEACH

FOR: MARMION NETWORK PTY. LTD.

PROJECT No 7801
 SKETCH No SK003
 SHEET No 6
 SCALE 1:200 @ B1
 DATE SEP 2014



Suite 2, Ground Floor, 437 Roberts Rd,
 Subiaco, Western Australia 6008.
 t: (08) 9381 8511.
 e: msa@meyershircore.com.au
 w: www.meyershircore.com.au

© Meyer Shircore
 & Associates
 ACN 115 189 216





ARTISTS IMPRESSION FROM CNR GRACEFUL BOULEVARD & TURNSTONE STREET

PROPOSED MEDICAL, CHILDCARE & PLAY CENTRE

LOCATION : THE GATEWAY ALKIMOS BEACH

FOR: MARMION NETWORK PTY. LTD.

PROJECT No 7801
 SKETCH No SK003
 SHEET No 7
 SCALE @ B1
 DATE 10/20/14



Suite 2, Ground Floor, 437 Roberts Rd,
 Subiaco, Western Australia 6008.
 t : (08) 9381 8511.
 e: msa@meyershircore.com.au.
 w: www.meyershircore.com.au

© Meyer Shircore
 & Associates
 ACN 115 189 216





ARTISTS IMPRESSION FROM TURNSTONE STREET

PROPOSED MEDICAL, CHILDCARE & PLAY CENTRE

LOCATION : THE GATEWAY ALKIMOS BEACH

FOR: MARMION NETWORK PTY. LTD.

PROJECT No 7801
 SKETCH No SK003
 SHEET No 8 @ B1
 SCALE @ B1
 DATE 10/20/14

meyer shircore
 and associates
 ARCHITECTS
 50 YEARS
 1963|2013

Suite 2, Ground Floor, 437 Roberts Rd,
 Subiaco, Western Australia 6008.
 t: (08) 9381 8511.
 e: msa@meyershircore.com.au.
 w: www.meyershircore.com.au

© Meyer Shircore
 & Associates
 ACN 115 189 216

Member
 Australian Institute
 of Architects



ARTISTS IMPRESSION FROM GRACEFUL BOULEVARD

PROPOSED MEDICAL, CHILDCARE & PLAY CENTRE

LOCATION : THE GATEWAY ALKIMOS BEACH

FOR: MARMION NETWORK PTY. LTD.

PROJECT No 7801
 SKETCH No SK003
 SHEET No 9 @ B1
 SCALE
 DATE 10/20/14

meyer shircore
 and associates
 ARCHITECTS
 1963|2013
 50 YEARS

Suite 2, Ground Floor, 437 Roberts Rd,
 Subiaco, Western Australia 6008.
 t: (08) 9381 8511.
 e: msa@meyershircore.com.au.
 w: www.meyershircore.com.au

© Meyer Shircore
 & Associates
 ACN 115 189 216

Member
 Australian Institute
 of Architects