



Department of  
Transport

## Two Rocks

### Limestone Rock Underneath the Dunes



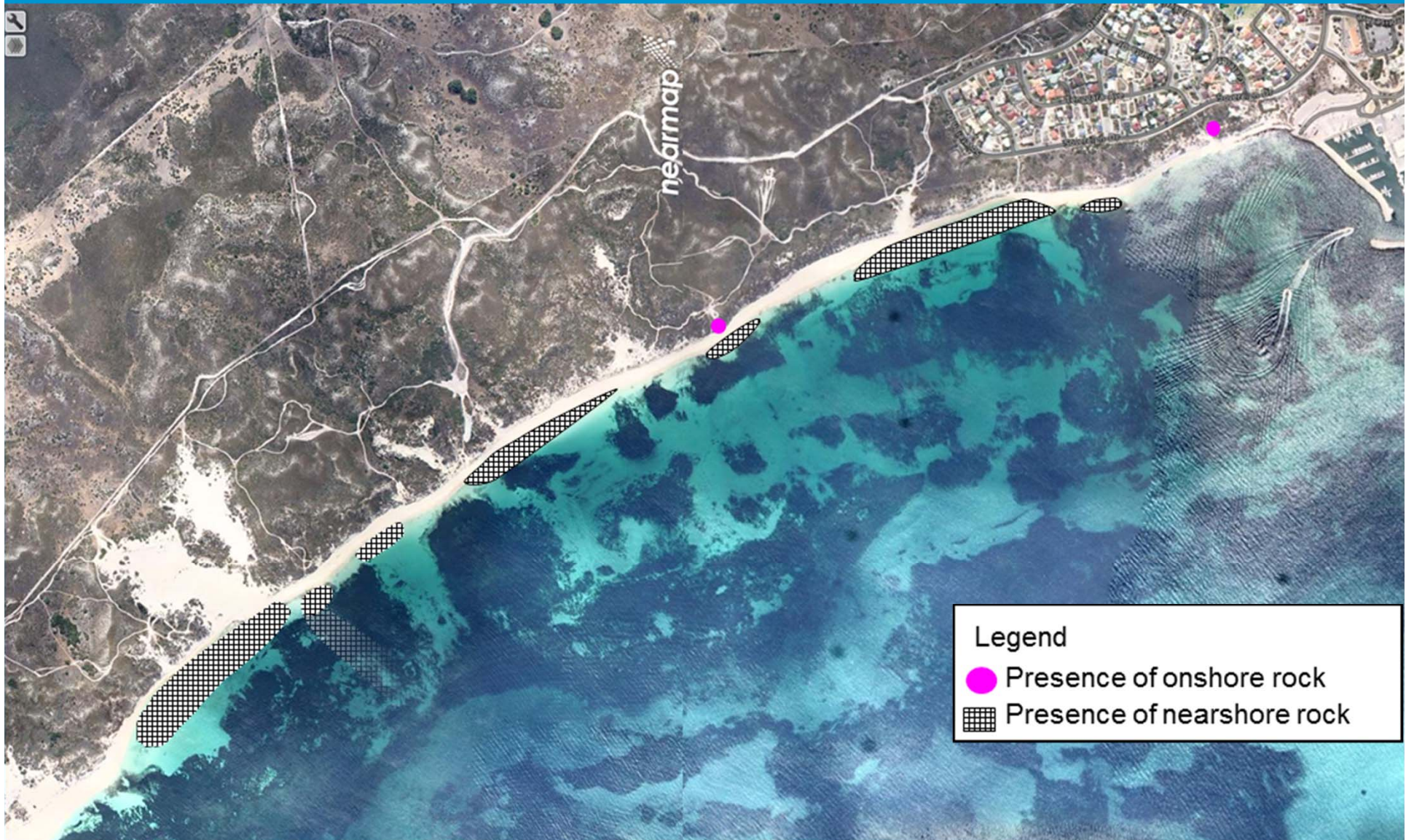
Coastal Management  
Department of Transport  
18 March 2015





Department of  
Transport

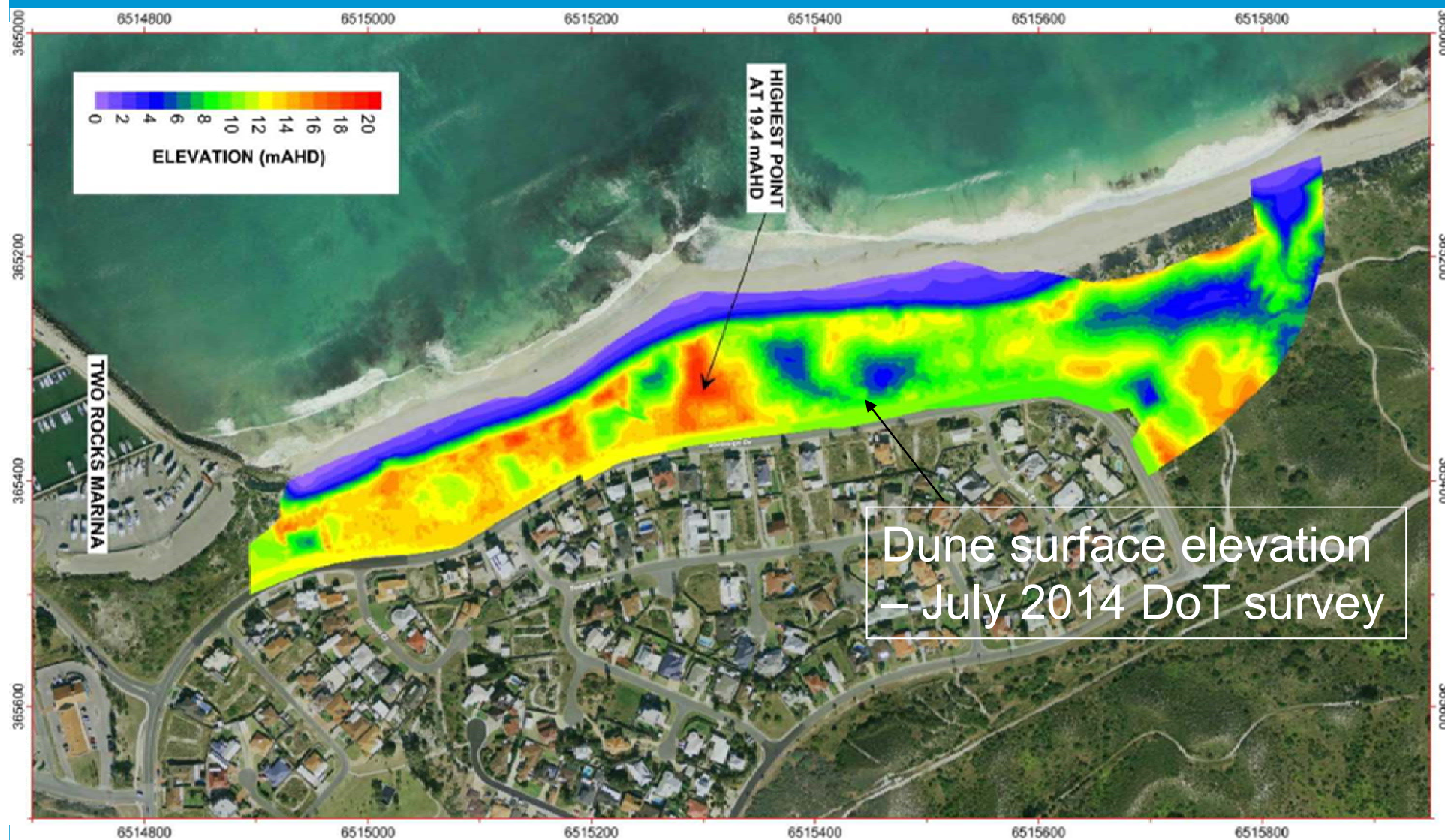
# Visible Rock Platforms







# Study Area





# Seismic Multi-channel Analysis of Surface Waves, Ground Penetrating Radar and Cone Penetrometer Testing



2014 05 07





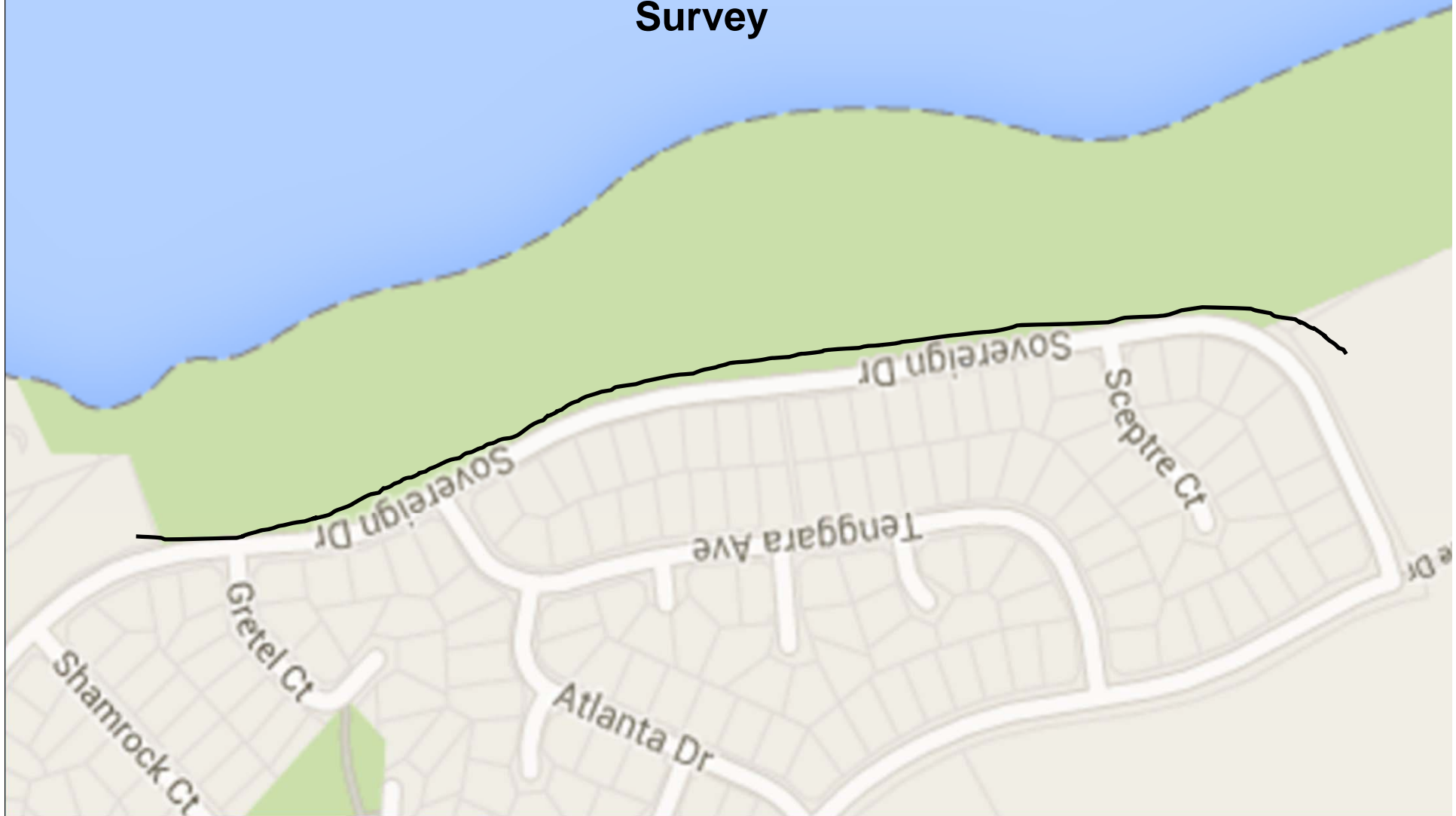
# Surveying Strategy







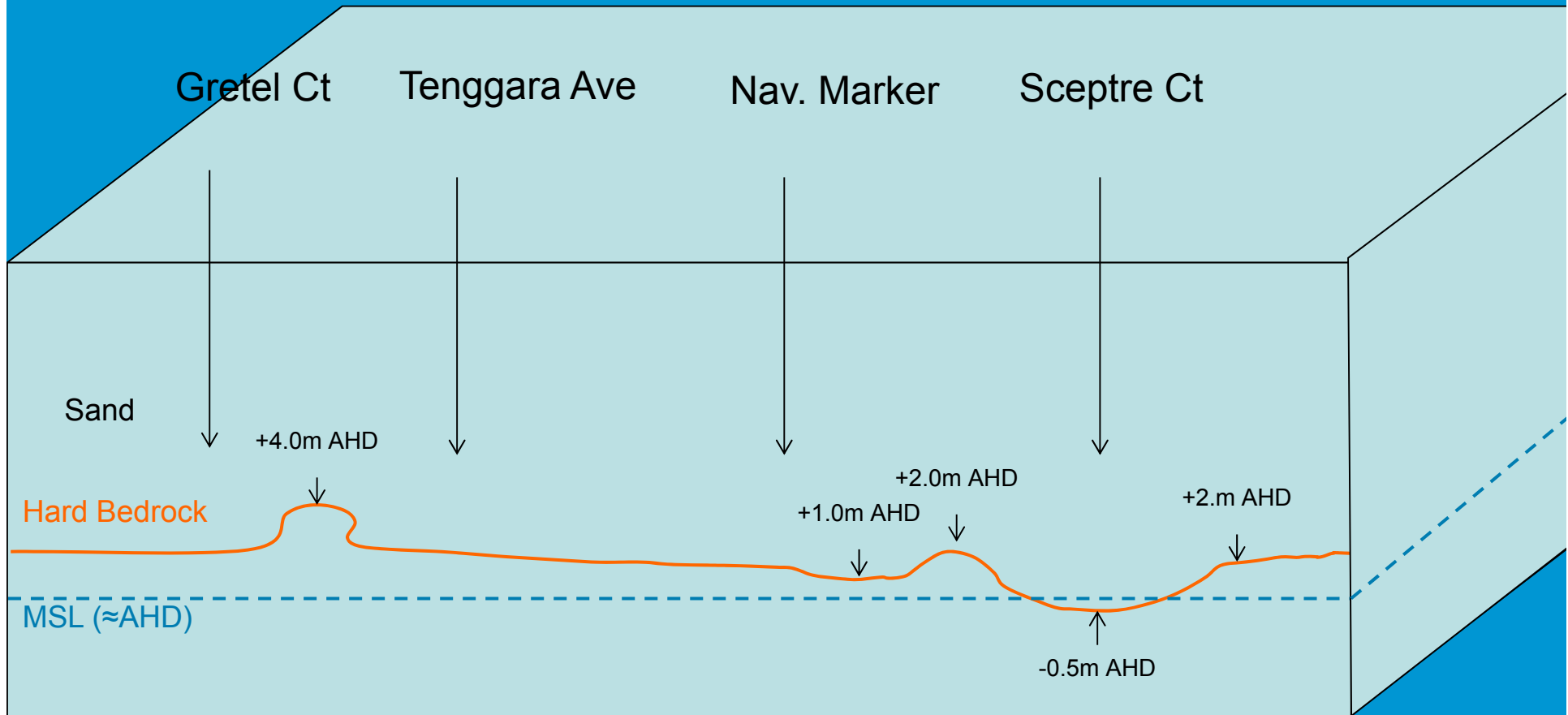
## Sovereign Drive Parallel Survey





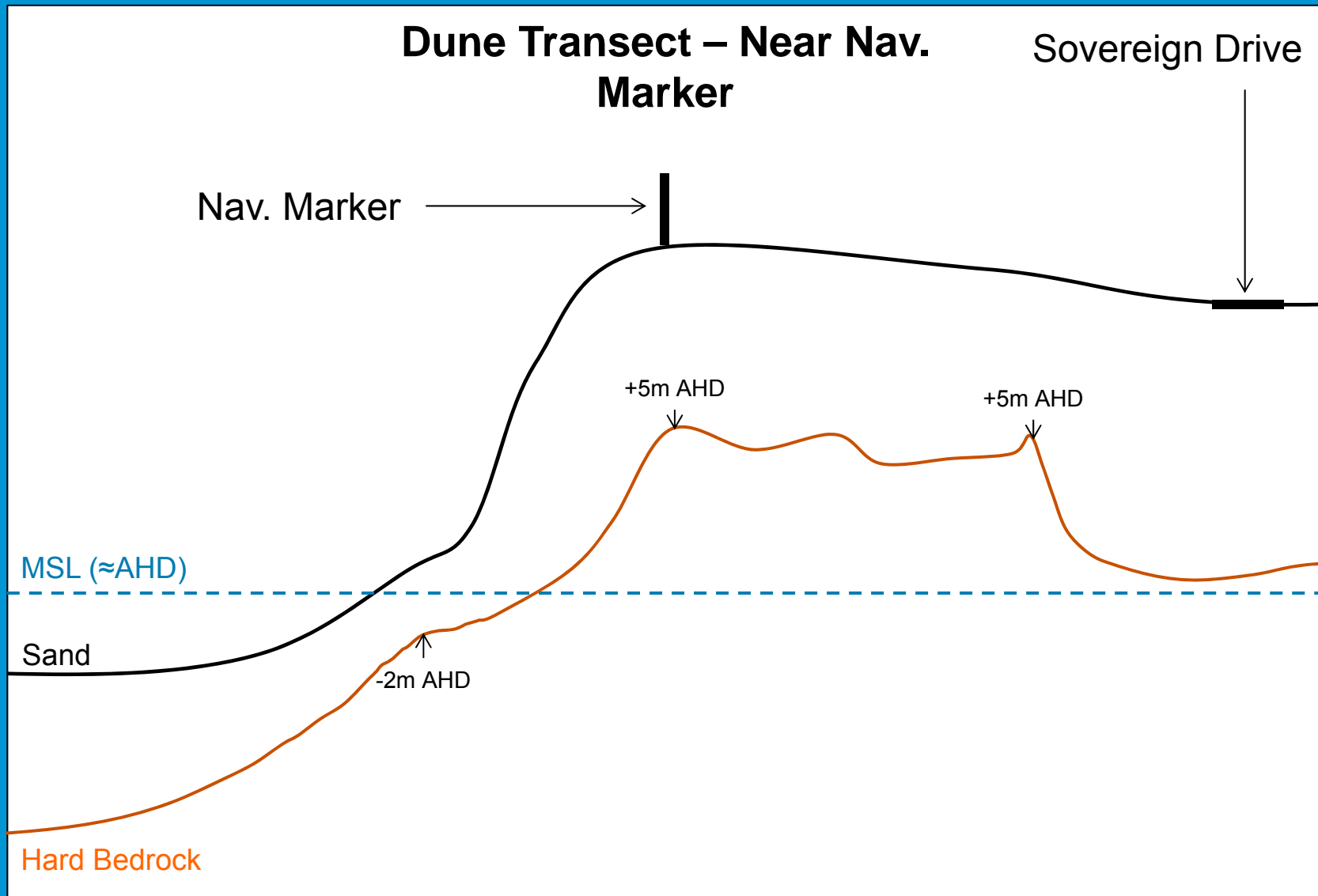


## Sovereign Drive Parallel Survey



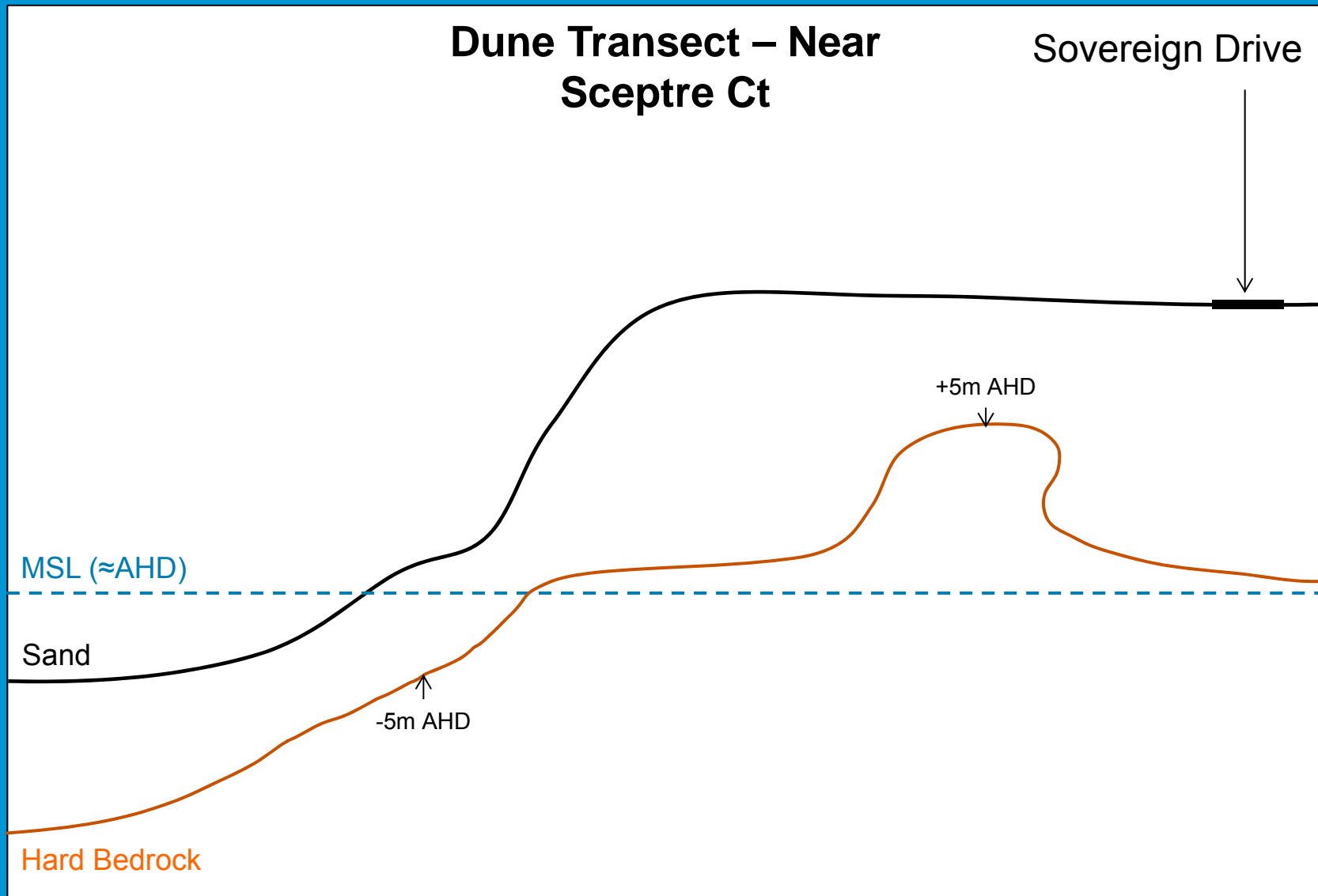
For illustration only, levels are approximate and figure is not to scale. Rock levels beyond the beach are estimates only.





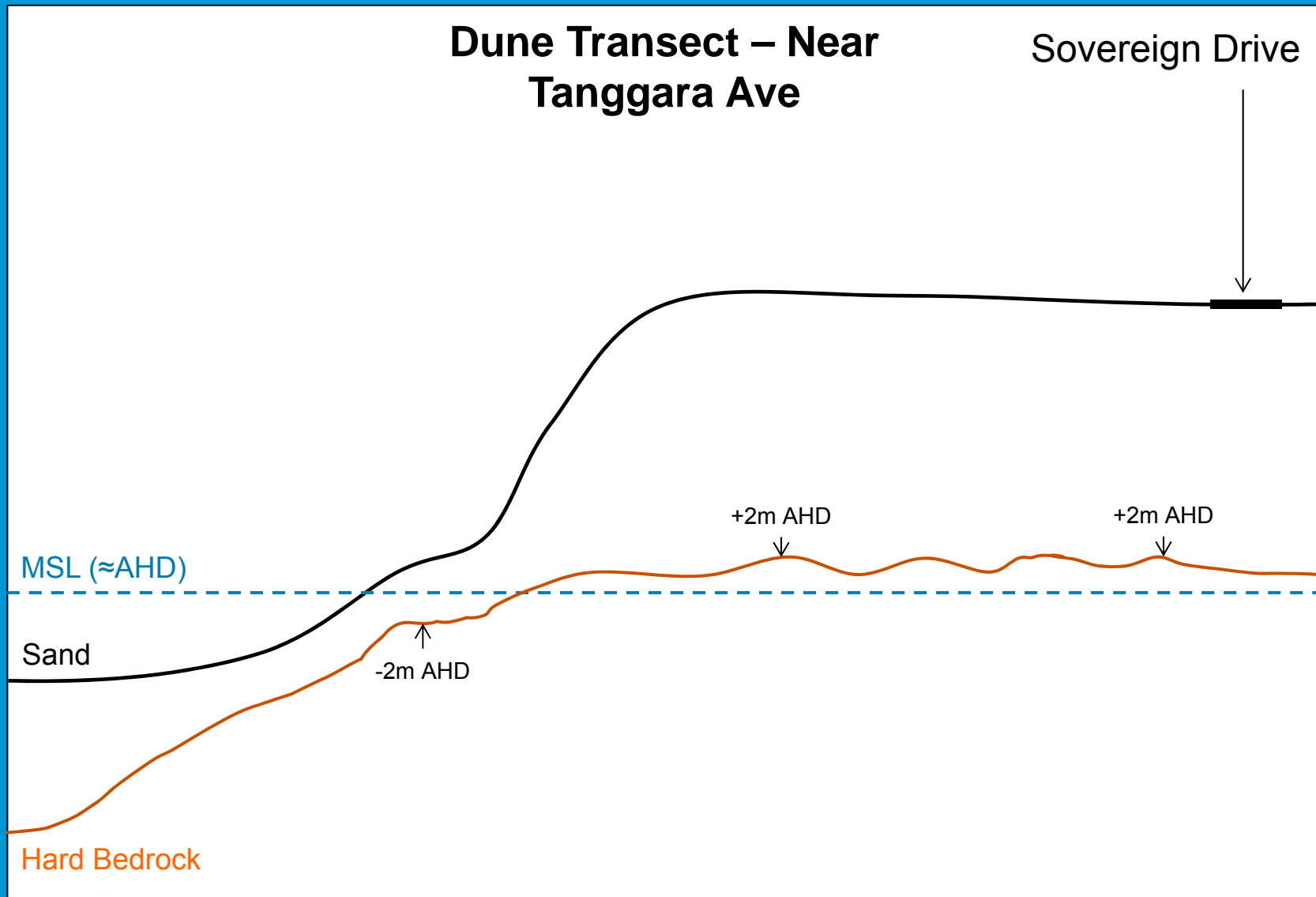
For illustration only, levels are approximate and figure is not to scale. Rock levels beyond the beach are estimates only.





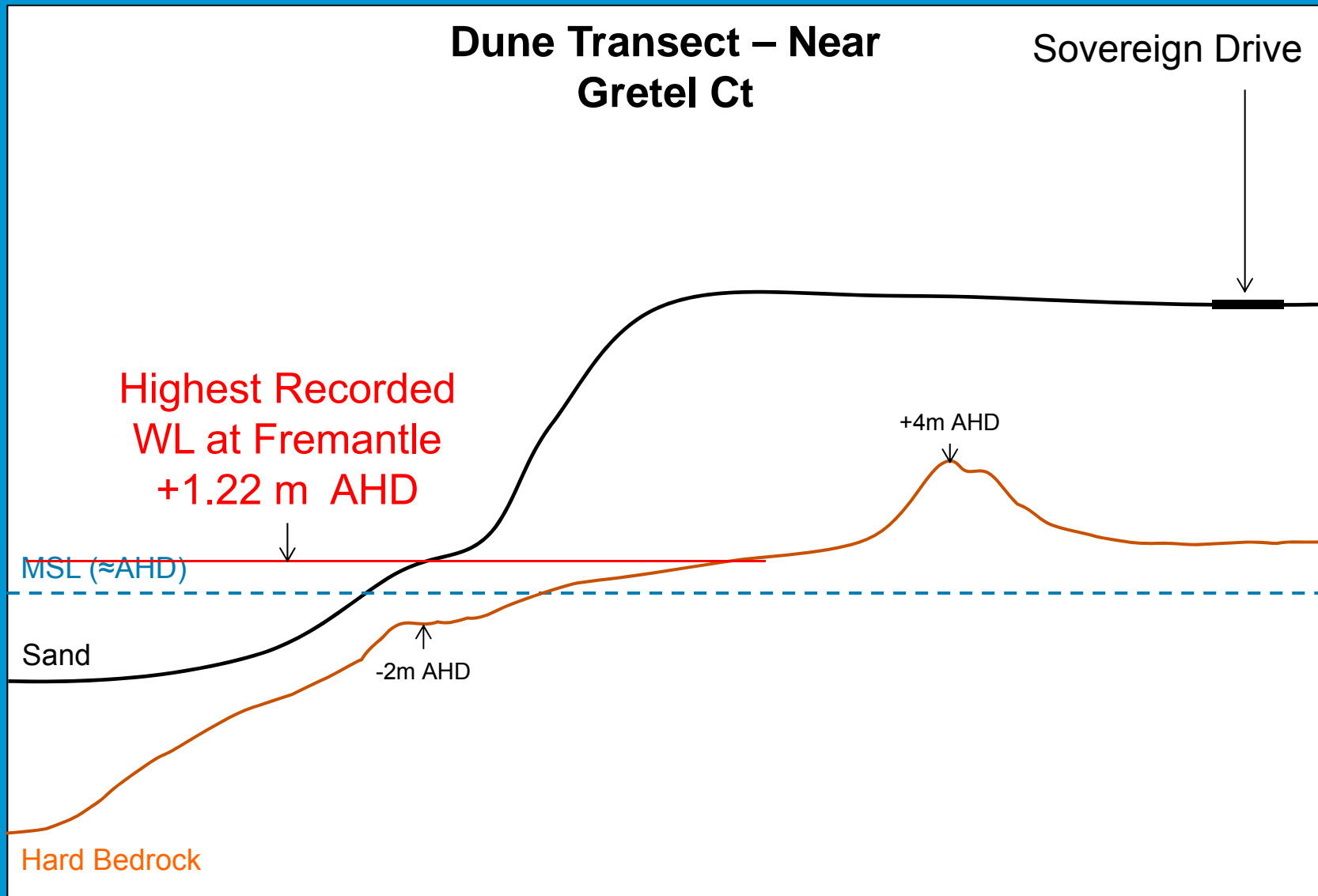
For illustration only, levels are approximate and figure is not to scale. Rock levels beyond the beach are estimates only.





For illustration only, levels are approximate and figure is not to scale. Rock levels beyond the beach are estimates only.





For illustration only, levels are approximate and figure is not to scale. Rock levels beyond the beach are estimates only.





## Key Findings:

- Bed rock levels varied from +0.6m AHD to +7.7m AHD at transects throughout the dune system.
- Bed rock was lower along Sovereign Drive, with levels from -0.5m AHD to +6.3m AHD.
- Evidence of high rock buried between beach and Sovereign Drive
- Given the higher than MSL minimum rock level under the dunes, Aerecon stated that, *“the potential for significant erosion of the sand dune formation beyond Sovereign Drive is limited”*.