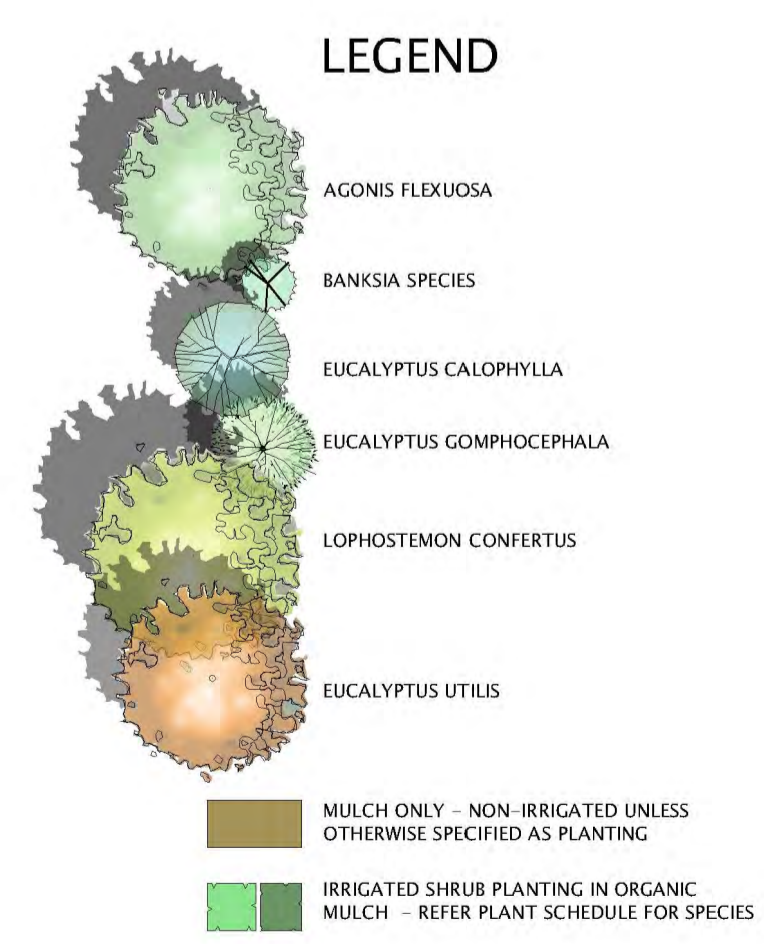




Planting Schedule 0195_B

Note: Quantities scheduled should not be used for estimation. Drawing to be used relative to site dimensions to define extent of finish. It is the responsibility of the contractor to check all site dimensions and set out relative to documentation prior to e

Key	Species	Common name	Plt Size / Unit	Ratio to Mass Grouping	Qty	Notes	Irrigation Spec
AF	Agonis flexuosa	Weeping Peppermint	45 LI		8	Excavation to accommodate tree root ball to be 200mm greater in radius than same tree container size. Back-fill to root ball to compose of blended 15% Soil Enricher (Eclipse), 85% site soil & 3 x slow release fertiliser tabs unless otherwise specified. r	All irrigation to conform to City Of Wanneroo Standard Irrigation Specifications: 3 x Regulated Flood (Buses to each specimen, installed to ring from lateral T - Pending Shire approval.
LC	Lophostemon confertus	Brush Box	200 LI		5		
EU	Eucalyptus utilis		45 LI		26		
EC	Eucalyptus calophylla	Marr	11 LI		19	Excavation to accommodate tree root ball to be 200mm greater in radius than same tree container size. Back-fill to root ball with soil wetting agent as per manufacturers.	All irrigation to conform to City Of Wanneroo Standard Irrigation Specifications: 1 x Regulated Flood (Bubbles to each specimen, installed to ring from lateral T - Pending Shire approval.
EG	Eucalyptus gomphocephala	Tuart	11 LI		62		
BS	Banksia grandis	Banksia	11 LI		30		
	Banksia menziesii		11 LI		10		
	Banksia prionotes		11 LI		10		
P01	Indigenous shrubs <700mm ht		m2	100%	1173	Preparation installation following min 2 weeks saturation period - Site spread Mulch 3.2 over sub-surface re-fill irrigation as specified. Opposite for min 7 days until soil moisture can be illustrated prior to installing tube installation / establishment	All irrigation to conform to City Of Wanneroo Standard Irrigation Specifications: Regulated Sub-surface Wetfill as per Shire Specification.
	Acacia lasiocarpa	Dune Moses	130mm Tube	8%	28		
	Leuc. ophyta	brown	130mm Tube	13%	46		
	Scacelia Blue Bells		130mm Tube	5%	18		
	Conostylis acutata	Philly Conostylis	130mm Tube	5%	18		
	Conostylis candidans	Grey Cottonheads	130mm Tube	10%	35		
	Angoanthes Bush Dawn	Golden Kangaroo Paw	130mm Tube	10%	35		
	Eremophila nivea Spring Mist		130mm Tube	7%	25		
	Lepidosperma gladiatum	Sward Sedge	130mm Tube	15%	53		
	Conospermum incanum	Cottonheads	130mm Tube	7%	25		
	Myoporum parviflorum	Myoporum	130mm Tube	25%	70		
As	Indigenous Informal Hedge				352		
	Adiantum serecia	Woody Bush	130mm Tube		212		
P13	Turf Kikuyu		m2		850	Preparation Grade areas to true and even grades and falls to shed water and to finish flush with adjoining kerbs to roads, footpaths, edges, manholes, pits and the like except where otherwise indicated on the Drawings. Finish shall be smooth rolled, conso	All irrigation to conform to City Of Wanneroo Standard Irrigation Specifications: Overhead Spray Irrigation - refer spec. pending shire approval.
M3.2	Mulch		m2		1470	Mulch Surface Finish - Enviromulch to min 75mm & maximum 100mm depth. Finish level to be max 40mm & min 20mm below adjacent trafficable finish to mitigate migration of mulch material from specified areas.	Un-irrigated unless otherwise specified as Planting Type.
ERT00	Edge Restraint, Extruded Concrete Kerb		m lin		150	Grade kerb alignments to form true and even grades and falls to accommodate lawn ability to shed water and to finish flush with adjoining trafficable surfaces such as roads, footpaths, edges, manholes, pits and the like except where otherwise indicated o	



19.02.15 ISSUE FOR BUILDING

No DATE REVISION

BOLLIG DESIGN GROUP
BDG
 WEST PERTH
 Telephone: 08 9321 4402
 Facsimile: 08 9481 8259
 email: bdg@bollig.com.au

PEARSAL HOCKING COMMUNITY CENTRE
SOFT LANDSCAPING PLAN

PROJECT No:	1449	DWG No:	REV
DRAWN:	BM	DATE:	19.02.2015
SCALE:	1:200 @ A1	CHECKED:	FILE No:
BUILDER MUST CHECK ALL DIMENSIONS ON THE SITE BEFORE COMMENCING ANY WORK OR MAKING ANY SHOP DRAWINGS WHICH MUST BE SUBMITTED AND APPROVED BEFORE MANUFACTURE. THIS DRAWING IS THE PROPERTY OF THE ARCHITECTS AND SUBJECT TO RETURN ON REQUEST.			