

Mindarie – Residential



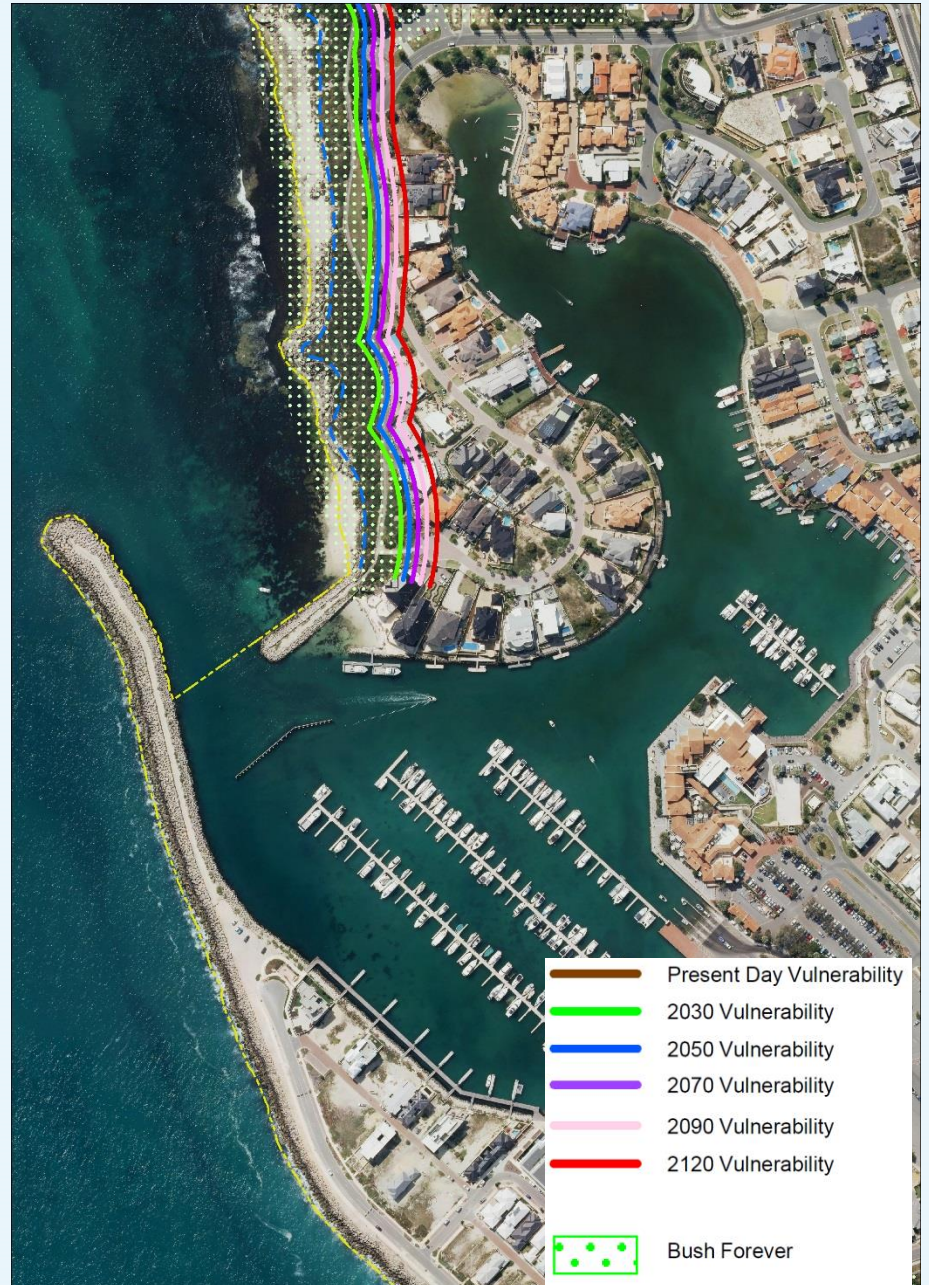
Image: Lofty Visions

What are the valuable assets in this area?

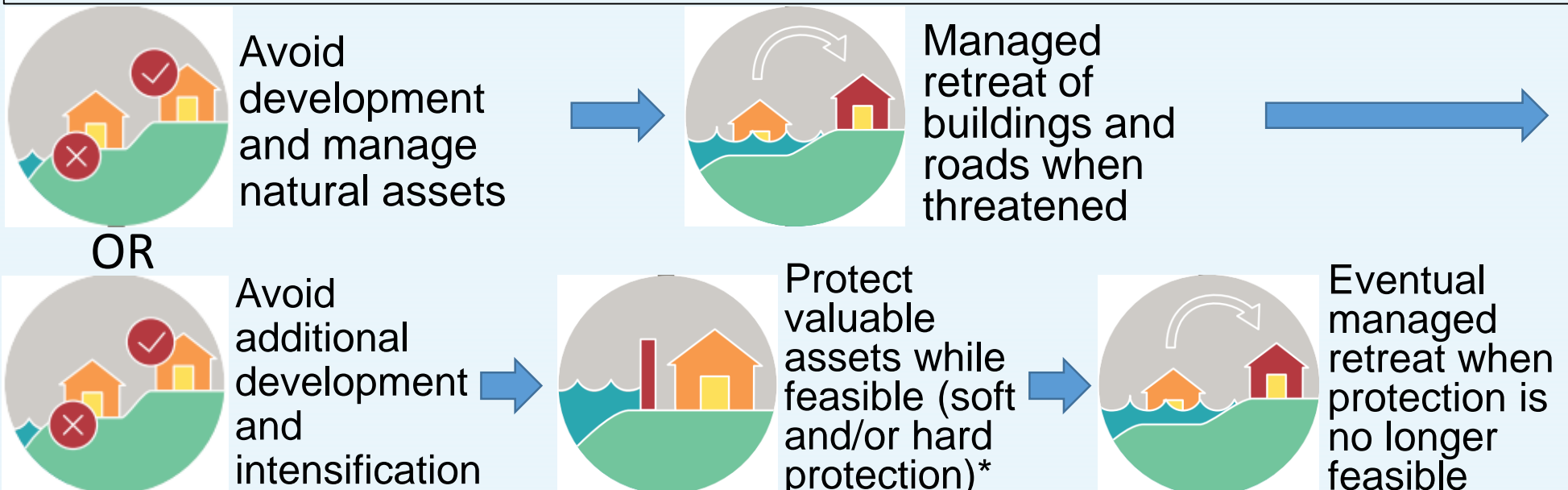
- The beach
- The dunes and their vegetation
- The roads and associated infrastructure
- Residential properties

What action can we take now?

- Notify landowners who may be affected by present and future coastal hazards
- Implement/review planning controls to prevent additional development in coastal hazard areas (except infill)
- Further investigate coastal hazards
- Undertake dune care and minor sand management to maintain the dunes as a natural buffer
- Put emergency plans and controls in place to prepare for coastal hazard events
- Monitor the shoreline to see how it is changing and better inform decision making



What is the adaptation pathway for this area over the next 100 years?



*Note: Hard protection structures may result in the loss of the beach in the future and increased problems on adjacent beaches