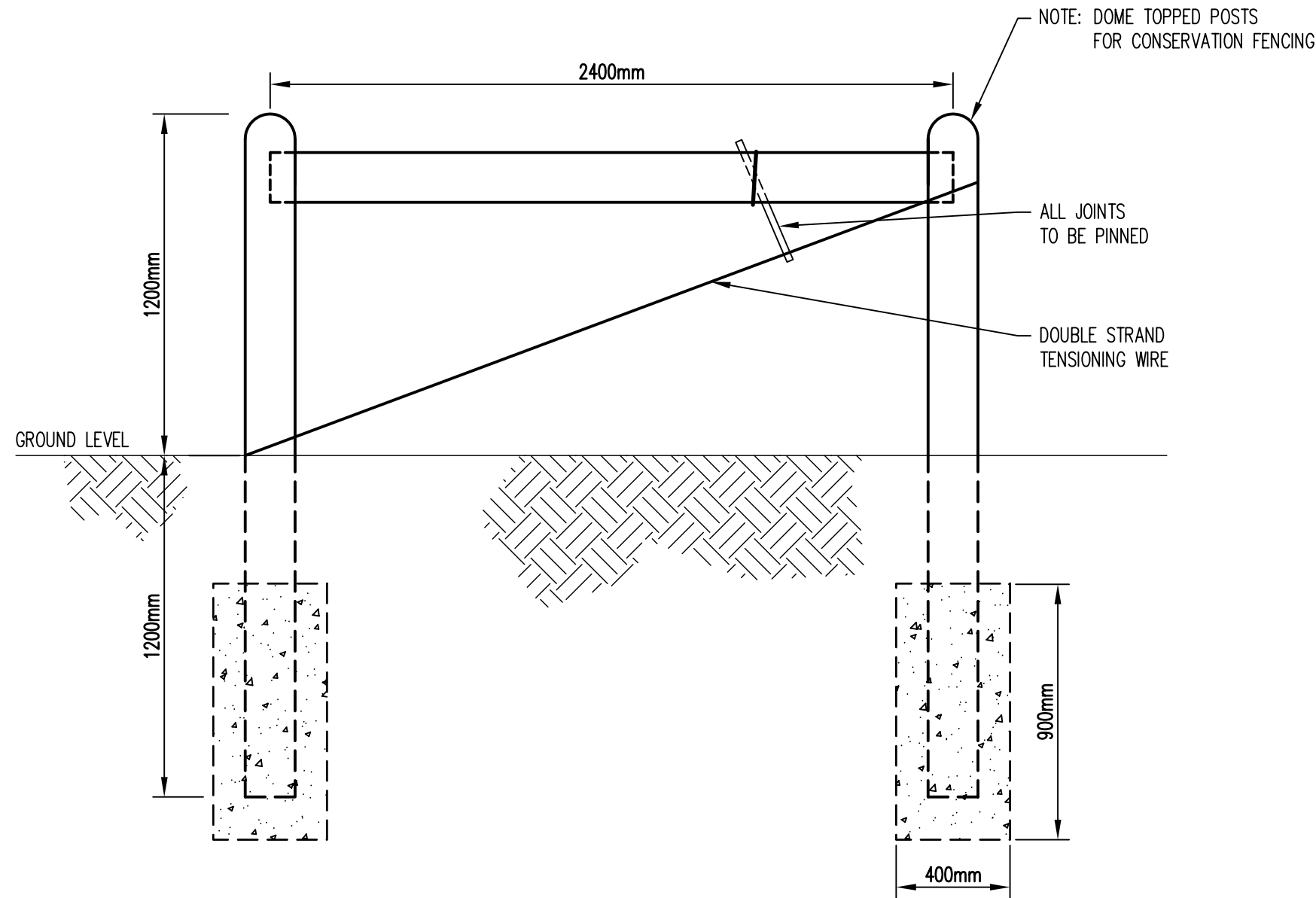


No	REVISION	BY	DATE	AUTH
0.	ISSUED	J.W.T.	10/2002	



MATERIAL SPECIFICATIONS

- 150-175 mm x2.4m CCA TREATED PINE LOG (FOR BOX STRAINERS)
- GALVANISED 2.5mm SINGLE STRAND HIGH TENSILE PLAIN WIRE
- 1.57 mm GALVANISED TIE WIRE

NOTES

- BOX STRAINERS ARE TO BE CONSTRUCTED OUT OF TREATED PINE LOGS AND PINNED.
- BOX STRAINERS TO BE PLACED ON BOTH SIDES OF CHAIN GATES.
- DOUBLE BOX STRAINERS AT ALL CORNERS AND CHANGE IN DIRECTION OF FENCE.
- BOX STRAINERS TO BE PLACED AT MAXIMUM DISTANCE OF 200m INTERVALS ALONG FENCE.
- USE 10mm x 900mm LONG HIGH TENSILE LOCKING CHAIN (NON RUSTING) FOR AGRICULTURAL GATES AND 600mm LONG CHAIN FOR LOW VEHICLE GATES.
- ALL BOX STRAINERS TO BE BURIED TO A DEPTH OF 1200mm.
- CONCRETE SHALL BE MIXED IN THE PROPORTIONS OF (4) PARTS BY WEIGHT OF CLEAN DUST FREE AGGREGATE (NOT EXCEEDING 20mm SIZE) PLUS TWO (2) PARTS BY WEIGHT OF CLEAN DUST FREE SAND PLUS ONE (1) PART BY WEIGHT OF MASONRY CEMENT, WITH WATER CONTENT SUFFICIENT TO ENSURE A SLUMP OF NOT MORE THAN 100mm USING THE AUSTRALIAN STANDARD SLUMP TEST CONE.
- CONCRETE SHALL ACHIEVE A MINIMUM COMPRESSIVE STRENGTH OF 20MP_a AT 28 DAYS.
- CONCRETE FOOTINGS SHALL BE CURED FOR TWENTY FOUR (24) HOURS BEFORE ERECTION OF WIRES OR MESH TO POSTS AND PICKETS.

* INDICATES SIGNATURES ON ORIGINAL ISSUE OF DRAWING.

DATUM: N/A	GRID: N/A	SURVEYOR: N/A	DESIGNED: C.O.W.	APPROVED: * B. CARTER 31/10/2002 COORDINATOR PARKS	FENCING BOX STRAINER DETAIL	CITY OF WANNEROO TECHNICAL SERVICES			
SCALE: 1:20	0.2 0 0.2 0.4 0.6 0.8 SCALE IN METRES		DRAWN: C.O.W.	APPROVED: * R. KORENHOF 31/10/2002 MANAGER INFRASTRUCTURE		INFRASTRUCTURE SERVICES			
DESIGN ARCHIVE: V:\TECHNICAL SERVICES DESIGN ARCHIVE	DESIGN CHECKED: * B. CARTER 31/10/2002 COORDINATOR PARKS		APPROVED: * D. BLAIR 31/10/2002 DIRECTOR TECHNICAL SERVICES	FILE No.		DRAWING No	SHEET	REVISION	ORIGINAL DRG.SIZE
DRAWING ARCHIVE: V:\TECHNICAL SERVICES DRAWING ARCHIVE	STANDARDS/DOCUMENT CONTROL: * J. TRIMMER 31/10/2002 PROJECTS TECHNICAL SUPPORT OFFICER		LOCALITY	TS 01 - 9 - 0		A3			