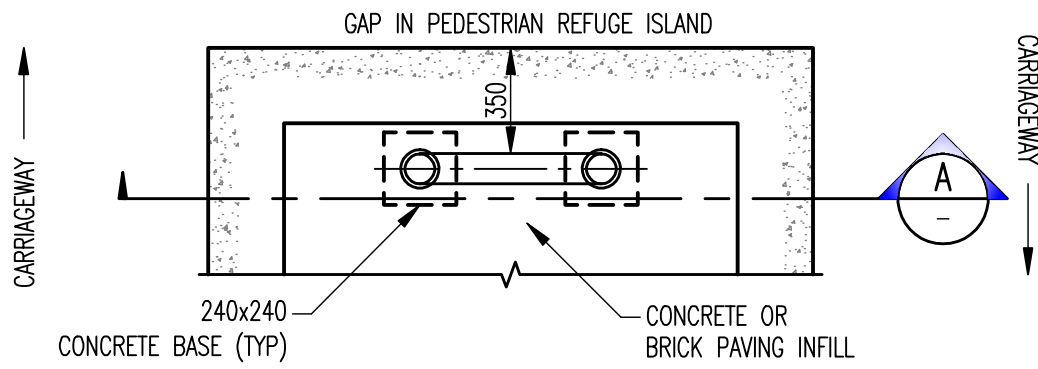
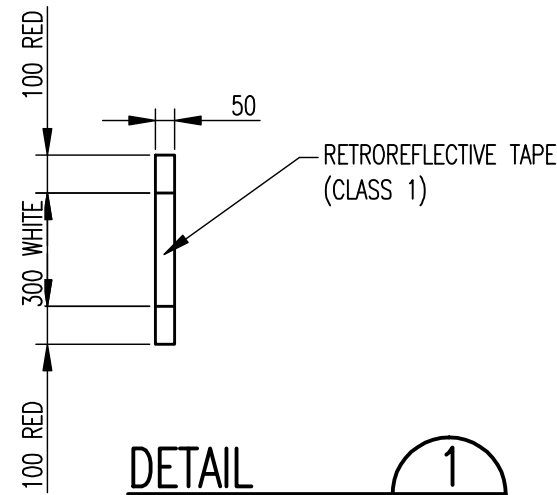


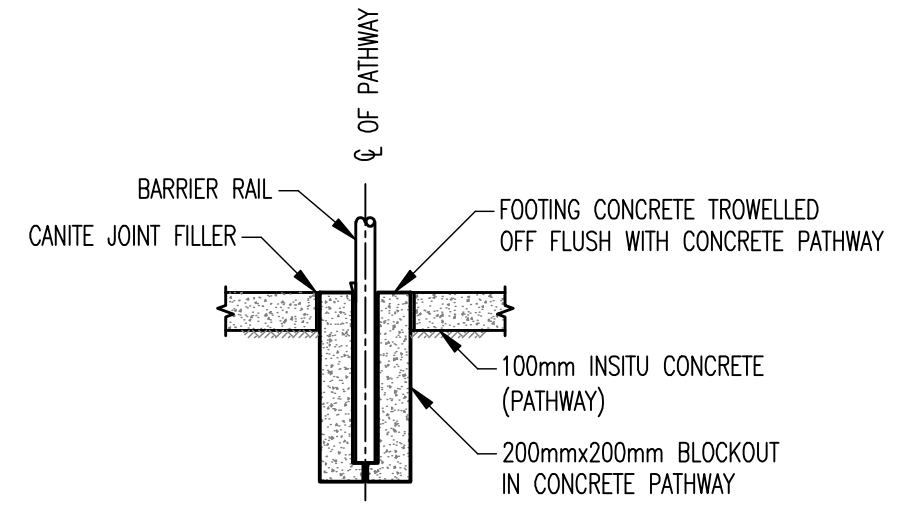
No.	REVISION	BY	DATE	AUTH
0	ISSUED	J.W.T	8/2001	
1	TITLE BLOCK UPDATED	C.H.	11/2010	I.B.



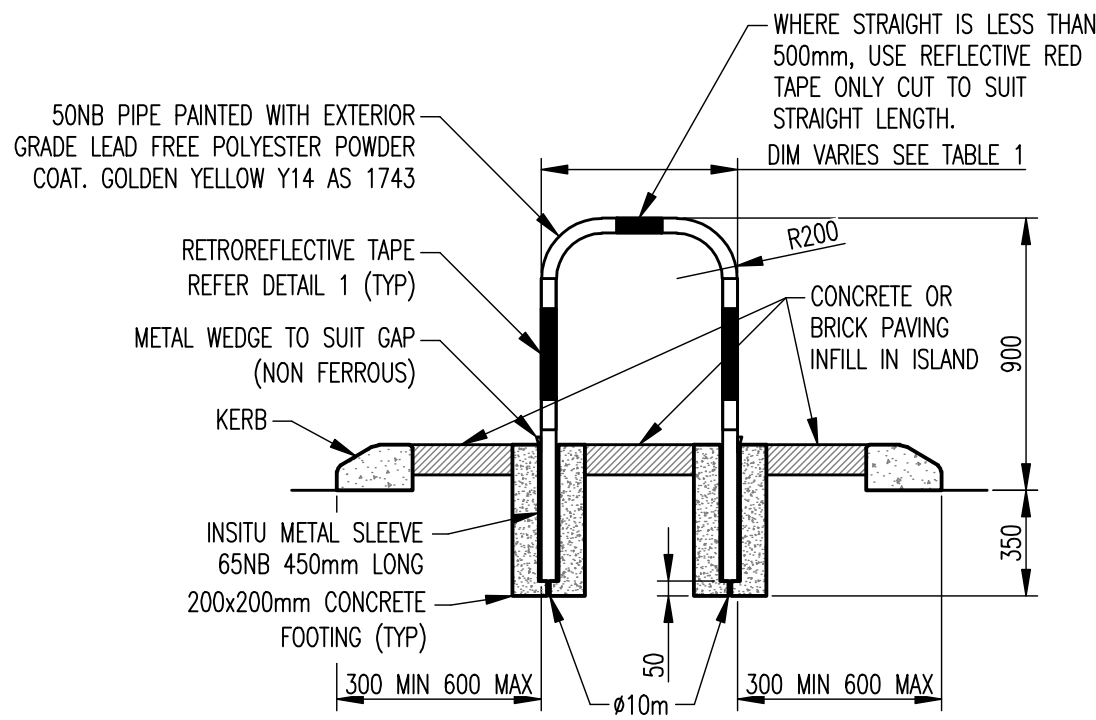
PLAN
SCALE 1:25



DETAIL 1
SCALE 1:20



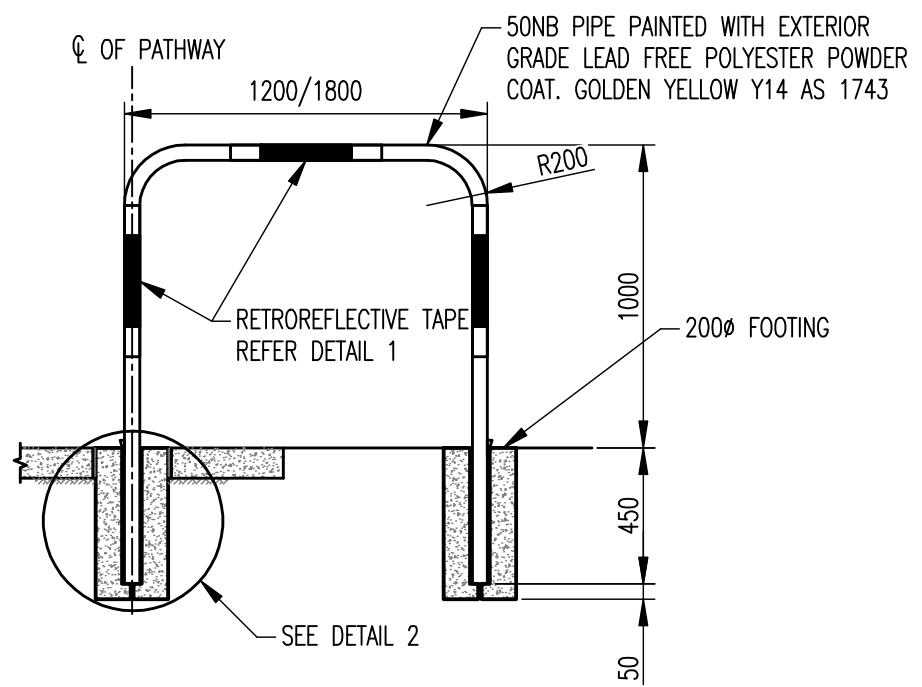
DETAIL 2
SCALE 1:20



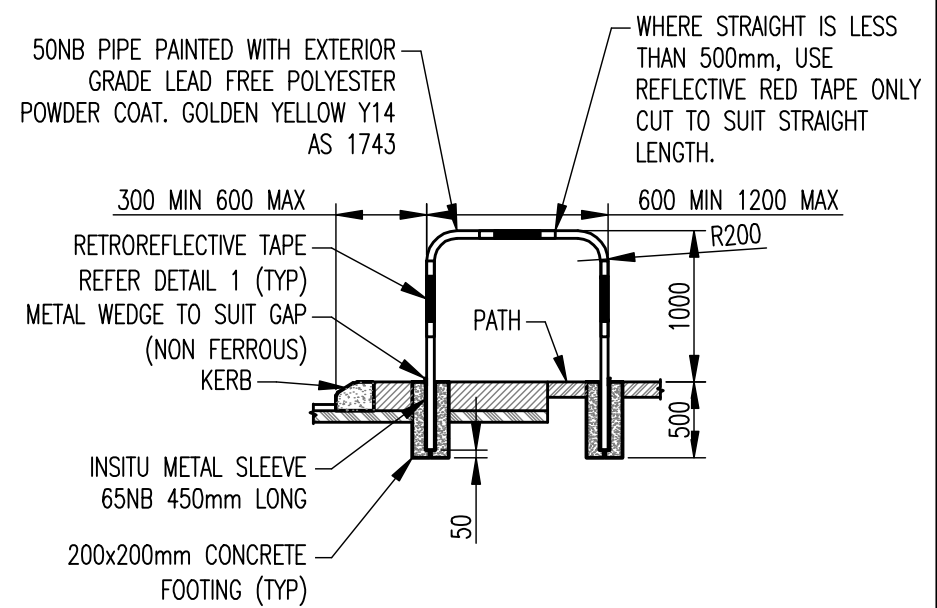
SECTION A
SCALE 1:20

PEDESTRIAN ISLAND HANDRAIL
SCALE 1:25

WIDTH OF ISLAND	WIDTH OF HANDRAIL
2.0m MIN	600mm
GREATER THAN 2.0m	TO SUIT ISLAND



PUBLIC ACCESSWAY HANDRAIL
SCALE 1:25



VERGE AND MEDIAN KERB RAMP HANDRAIL
SCALE 1:50

* INDICATES SIGNATURES ON ORIGINAL ISSUE OF DRAWING.

SCALE: 1:20 SCALE IN MILLIMETRES	DATUM: N/A	GRID: N/A
SURVEYED: N/A SURVEYOR	CHECKED: * T. QUINN COORDINATOR	8/8/2001
DESIGNED: C.O.W. CIVIL PROJECTS DESIGNER	AUTHORISED: * R. KORENHOF MANAGER INFRASTRUCTURE	8/8/2001
DRAWN: C.O.W. CIVIL PROJECTS DESIGNER	APPROVED: * D. BLAIR DIRECTOR TECHNICAL SERVICES	8/8/2001

PEDESTRIAN AND BICYCLE FACILITIES
HANDRAIL IN MEDIAN ISLAND/VERGE
AND PUBLIC ACCESSWAY

STANDARD

CITY OF WANNEROO
INFRASTRUCTURE



FILE No. N/A	DRAWING No. SHEET REVISION	ORIGINAL DRG. SIZE
PROJECT No. N/A	TS 09-06-1	A3