

LEGEND:

	- 40mm INTERSECTION MIX ASPHALT - TACK COAT - 75mm THICK 'ESL' BASECOURSE - 225mm THICK COMPACTED LIMESTONE SUB BASE
	- 30mm ASPHALT - TACK COAT - 75mm THICK 'ESL' BASECOURSE - 225mm THICK COMPACTED LIMESTONE SUB BASE
	- 30mm ASPHALT - TACK COAT - PLANE EXISTING SEAL TO ACCOMMODATE NEW LEVELS (SAW CUT AT TERMINATION WITH EXISTING)
	REMOVE EXISTING ROAD PAVEMENT/KERB AND BACKFILL WITH CLEAN FILL
	BRICK PAVING
	BLEND TO EXISTING

NOTES:
1. REFER TO DRAWING N° 2242-200 FOR DETAIL OF OTHER DRAWINGS IN THIS CONTRACT.

DESIGNED: A.P. CONSULTANT: BG&E	11/2009	DRAWN: S.H. CONSULTANT: BG&E	11/2009	CREATED: CONSULTANT: BG&E	APPROVED: CONSULTANT: BG&E
---------------------------------------	---------	------------------------------------	---------	------------------------------	-------------------------------

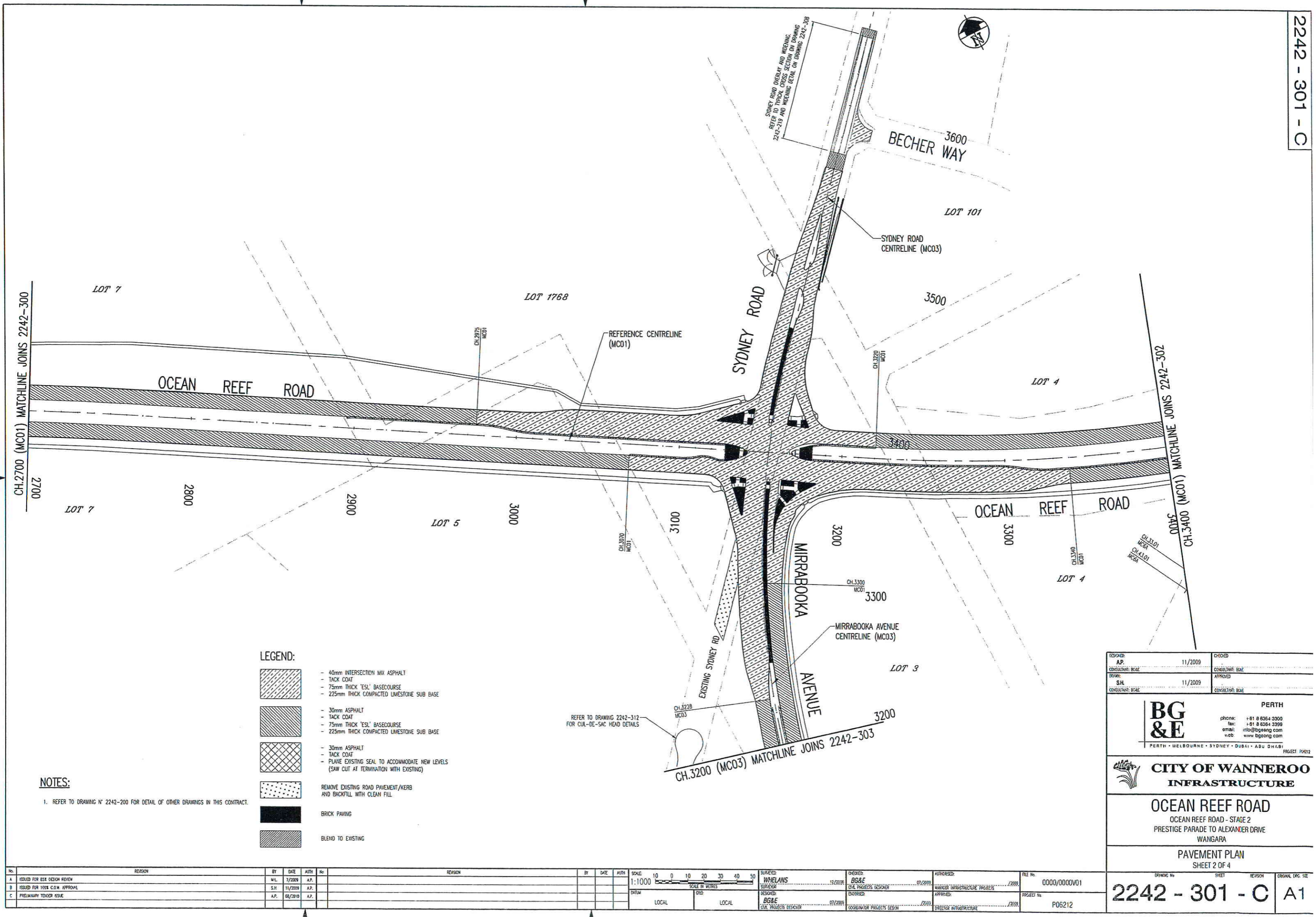
BG & E PERTH
 phone: +61 8 9364 3300
 fax: +61 8 9364 3399
 email: info@bgeeng.com
 web: www.bgeeng.com
 PERTH • MELBOURNE • SYDNEY • DUBAI • ABU DHABI PROJECT: P06212

CITY OF WANNEROO
INFRASTRUCTURE

OCEAN REEF ROAD
OCEAN REEF ROAD - STAGE 2
PRESTIGE PARADE TO ALEXANDER DRIVE
WANGARA

PAVEMENT PLAN
SHEET 1 OF 4

NO.	REVISION	BY	DATE	AUTH	NO.	REVISION	BY	DATE	AUTH	NO.	SCALE	10 0 10 20 30 40 50	SURVEYED: WHELANS SURVEYOR	12/2009	CHECKED: BG&E CIVIL PROJECTS DESIGNER	07/2009	AUTHORISED: MANAGER INFRASTRUCTURE PROJECTS	7/2009	FILE NO.	0000/0000V01
A	ISSUED FOR B&E DESIGN REVIEW	M.L.	7/2009	A.P.							1:1000		DESIGNED: BG&E CIVIL PROJECTS DESIGNER	07/2009	APPROVED: SUPERVISOR PROJECTS DESIGN	07/2009	APPROVED: SUPERVISOR INFRASTRUCTURE	7/2009	PROJECT NO.	P06212
B	ISSUED FOR N018 C.O.W. APPROVAL	S.H.	11/2009	A.P.																
C	PRELIMINARY TENDER ISSUE	A.P.	03/2019	A.P.																



- LEGEND:**
- 40mm INTERSECTION MIX ASPHALT
- TACK COAT
- 75mm THICK 'ESL' BASECOURSE
- 225mm THICK COMPACTED LIMESTONE SUB BASE
 - 30mm ASPHALT
- TACK COAT
- 75mm THICK 'ESL' BASECOURSE
- 225mm THICK COMPACTED LIMESTONE SUB BASE
 - 30mm ASPHALT
- TACK COAT
- PAVE EXISTING SEAL TO ACCOMMODATE NEW LEVELS
(SAW CUT AT TERMINATION WITH EXISTING)
 - REMOVE EXISTING ROAD PAVEMENT/KERB
AND BACKFILL WITH CLEAN FILL
 - BRICK PAVING
 - BLEND TO EXISTING

NOTES:
1. REFER TO DRAWING N° 2242-200 FOR DETAIL OF OTHER DRAWINGS IN THIS CONTRACT.

RESPOND:	11/2009	CHECKED:	
A.P.		CONSULTANT: B&E	
CONSULTANT: B&E		APPROVED:	
DRAWN:	11/2009	CONSULTANT: B&E	
S.H.		APPROVED:	
CONSULTANT: B&E		CONSULTANT: B&E	

BG & E PERTH

phone: +61 8 6364 3300
fax: +61 8 6364 3399
email: info@bgeeng.com
web: www.bgeeng.com

PERTH • MELBOURNE • SYDNEY • DUBAI • ABU DHABI

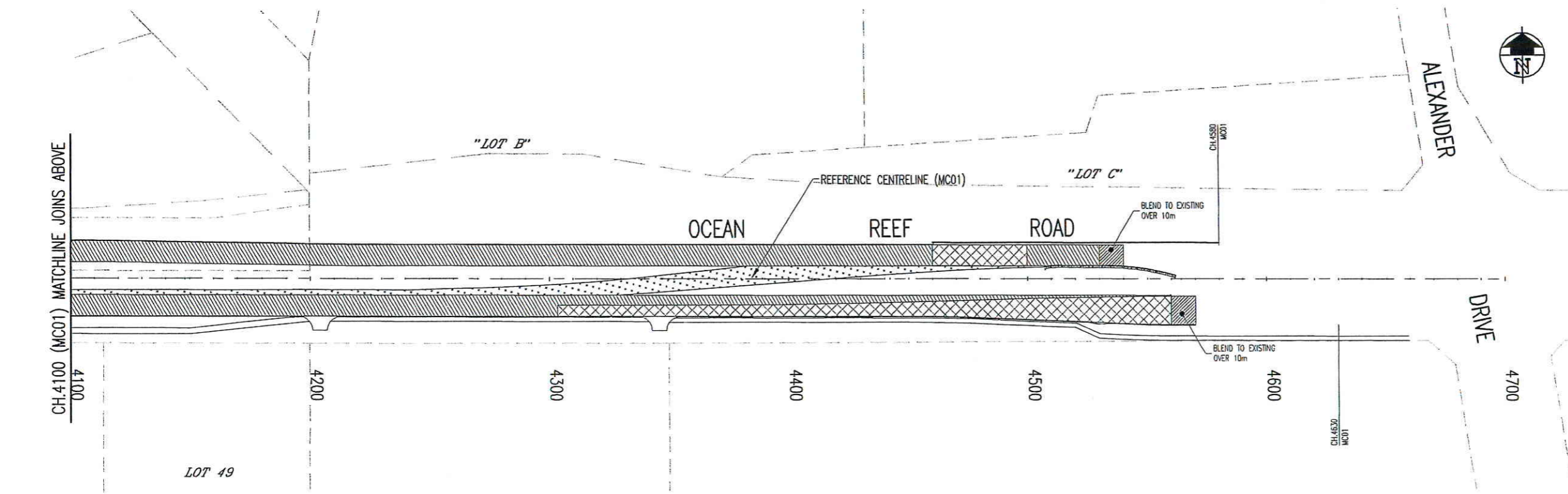
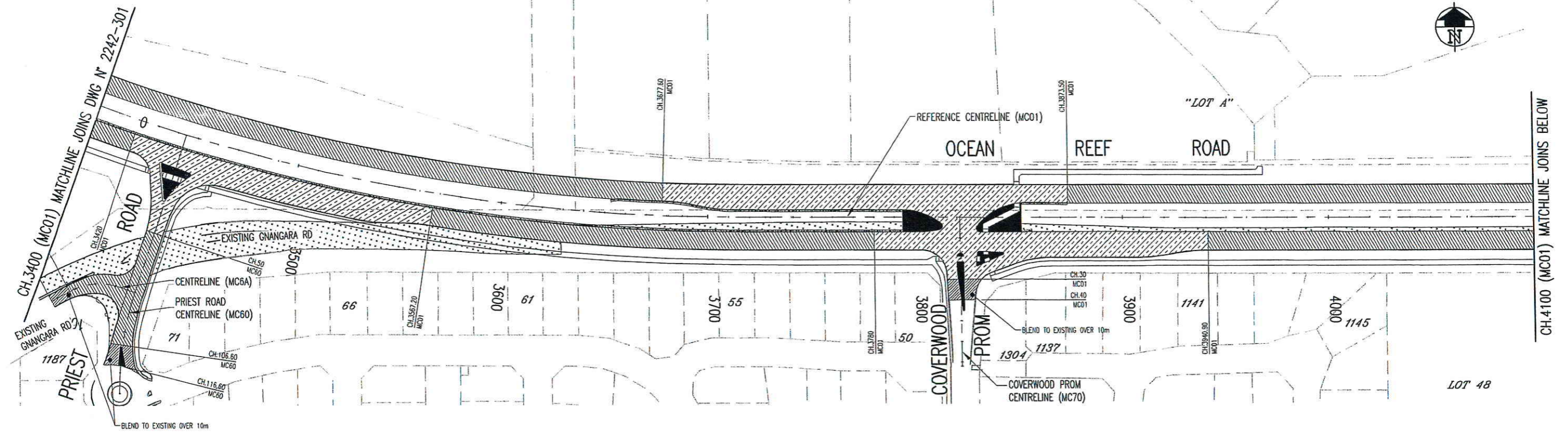
CITY OF WANNEROO INFRASTRUCTURE

OCEAN REEF ROAD
OCEAN REEF ROAD - STAGE 2
PRESTIGE PARADE TO ALEXANDER DRIVE
WANGARA

PAVEMENT PLAN
SHEET 2 OF 4

DRIVING No	SHEET	REVISION	ORIGINAL DRG. SIZE
2242 - 301 - C	A1		

11/02/2009 11:07:50 AM C:\P\2242-301\2242-301-02.dwg PLOT: 2242-301-02.dwg 11/02/2009 11:07:50 AM



- LEGEND:**
- 40mm INTERSECTION MIX ASPHALT
- TACK COAT
- 75mm THICK 'ESL' BASECOURSE
- 225mm THICK COMPACTED LIMESTONE SUB BASE
 - 30mm ASPHALT
- TACK COAT
- 75mm THICK 'ESL' BASECOURSE
- 225mm THICK COMPACTED LIMESTONE SUB BASE
 - 30mm ASPHALT
- TACK COAT
- PLANE EXISTING SEAL TO ACCOMMODATE NEW LEVELS (SAW CUT AT TERMINATION WITH EXISTING)
 - REMOVE EXISTING ROAD PAVEMENT/KERB AND BACKFILL WITH CLEAN FILL
 - BRICK PAVING
 - BLEND TO EXISTING

NOTES:
1. REFER TO DRAWING N° 2242-200 FOR DETAIL OF OTHER DRAWINGS IN THIS CONTRACT.

DESIGNED: A.P. CONSULTANT: BG&E	11/2009	CHECKED: CONSULTANT: BG&E
DRAWN: S.H. CONSULTANT: BG&E	11/2009	APPROVED: CONSULTANT: BG&E

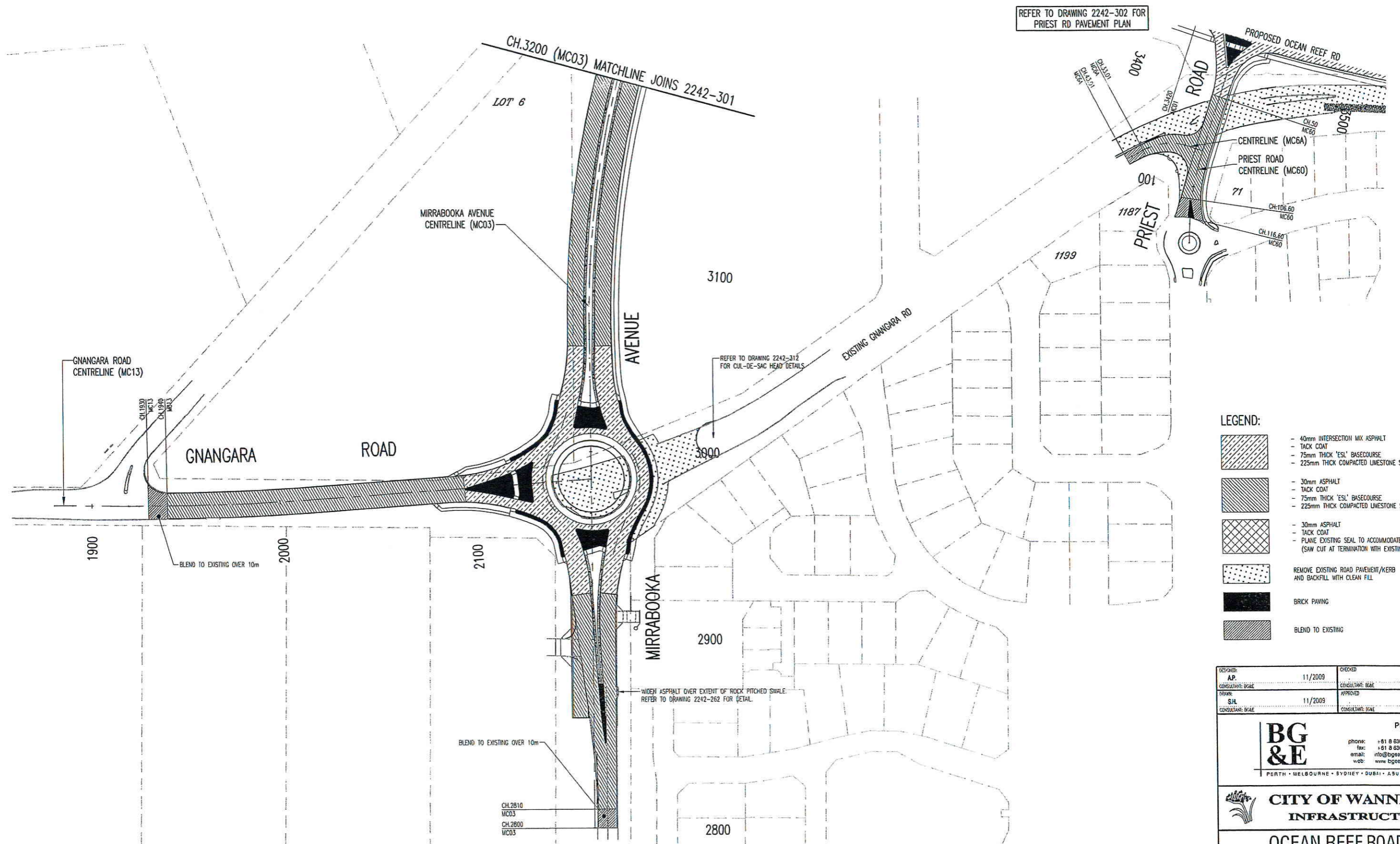
BG & E PERTH
 phone: +61 8 6364 3000
 fax: +61 8 6364 3399
 email: info@bgeang.com
 web: www.bgeang.com
 PERTH • MELBOURNE • SYDNEY • DUBAI • ABU DHABI PROJECT: P06212

CITY OF WANNEROO
INFRASTRUCTURE

OCEAN REEF ROAD
OCEAN REEF ROAD - STAGE 2
PRESTIGE PARADE TO ALEXANDER DRIVE
WANGARA

PAVEMENT PLAN
SHEET 3 OF 4

NO.	REVISION	BY	DATE	AUTH.	NO.	REVISION	BY	DATE	AUTH.	SCALE	10 0 10 20 30 40 50	SURVEYED: WHELANS	CHECKED: BG&E	AUTHORISED: MANAGER INFRASTRUCTURE PROJECTS	FILE No.	0000/0000V01
A	ISSUED FOR ESK DESIGN REVIEW	M.L.	1/2009	A.P.						1:1000	SCALE IN METRES	11/2009	07/2009	/2009		
B	ISSUED FOR 100% C.O.W. APPROVAL	S.H.	11/2009	A.P.							LOCAL	07/2009	07/2009	/2009		
C	PRELIMINARY TENDER ISSUE	A.P.	08/2010	A.P.							LOCAL	07/2009	07/2009	/2009		



REFER TO DRAWING 2242-302 FOR PRIEST RD PAVEMENT PLAN

LEGEND:

- 40mm INTERSECTION MIX ASPHALT
- TACK COAT
- 75mm THICK 'ESL' BASECOURSE
- 225mm THICK COMPACTED LIMESTONE SUB BASE
- 30mm ASPHALT
- TACK COAT
- 75mm THICK 'ESL' BASECOURSE
- 225mm THICK COMPACTED LIMESTONE SUB BASE
- 30mm ASPHALT
- TACK COAT
- PLANE EXISTING SEAL TO ACCOMMODATE NEW LEVELS (SAW CUT AT TERMINATION WITH EXISTING)
- REMOVE EXISTING ROAD PAVEMENT/KERB AND BACKFILL WITH CLEAN FILL
- BRICK PAVING
- BLEND TO EXISTING

DESIGNED: A.P. CONSULTANT: BG&E	11/2009	CHECKED: CONSULTANT: BG&E
DRAWN: S.J.L. CONSULTANT: BG&E	11/2009	APPROVED: CONSULTANT: BG&E

BG & E PERTH
 phone: +61 8 6364 3300
 fax: +61 8 6364 3399
 email: info@bgeeng.com
 web: www.bgeeng.com
 PERTH • MELBOURNE • SYDNEY • DUBAI • ASU DHABI PROJECT: P08212

CITY OF WANNEROO INFRASTRUCTURE

OCEAN REEF ROAD
 OCEAN REEF ROAD - STAGE 2
 PRESTIGE PARADE TO ALEXANDER DRIVE
 WANGARA

PAVEMENT PLAN
 SHEET 4 OF 4

DRAWING No	SHEET	REVISION	ORIGINAL EPG. SIZE
2242 - 303 - C	A1		

NOTES:
 1. REFER TO DRAWING N° 2242-200 FOR DETAIL OF OTHER DRAWINGS IN THIS CONTRACT.

No.	REVISION	BY	DATE	AUTH	No.	REVISION	BY	DATE	AUTH	No.
A	ISSUED FOR B&E DESIGN REVIEW	M.L.	7/2009	A.P.						
B	ISSUED FOR 100% C.O.W. APPROVAL	S.H.	11/2009	A.P.						
C	PRELIMINARY TENDER ISSUE	A.P.	06/2010	A.P.						

SCALE: 1:1000	SCALE IN METRES	10 0 10 20 30 40 50
DATE	LOCAL	LOCAL
SUPERVISED: WHELANS SURVEYOR	11/2009	DESIGNED: BG&E CIVIL PROJECTS DESIGNER
CHECKED: BG&E CIVIL PROJECTS DESIGNER	07/2009	ENDORSED: BG&E CIVIL PROJECTS DESIGNER
AUTHORISED: MANAGER INFRASTRUCTURE PROJECTS	2009	APPROVED: DIRECTOR INFRASTRUCTURE

FILE No	0000/0000V01
PROJECT No	P06212