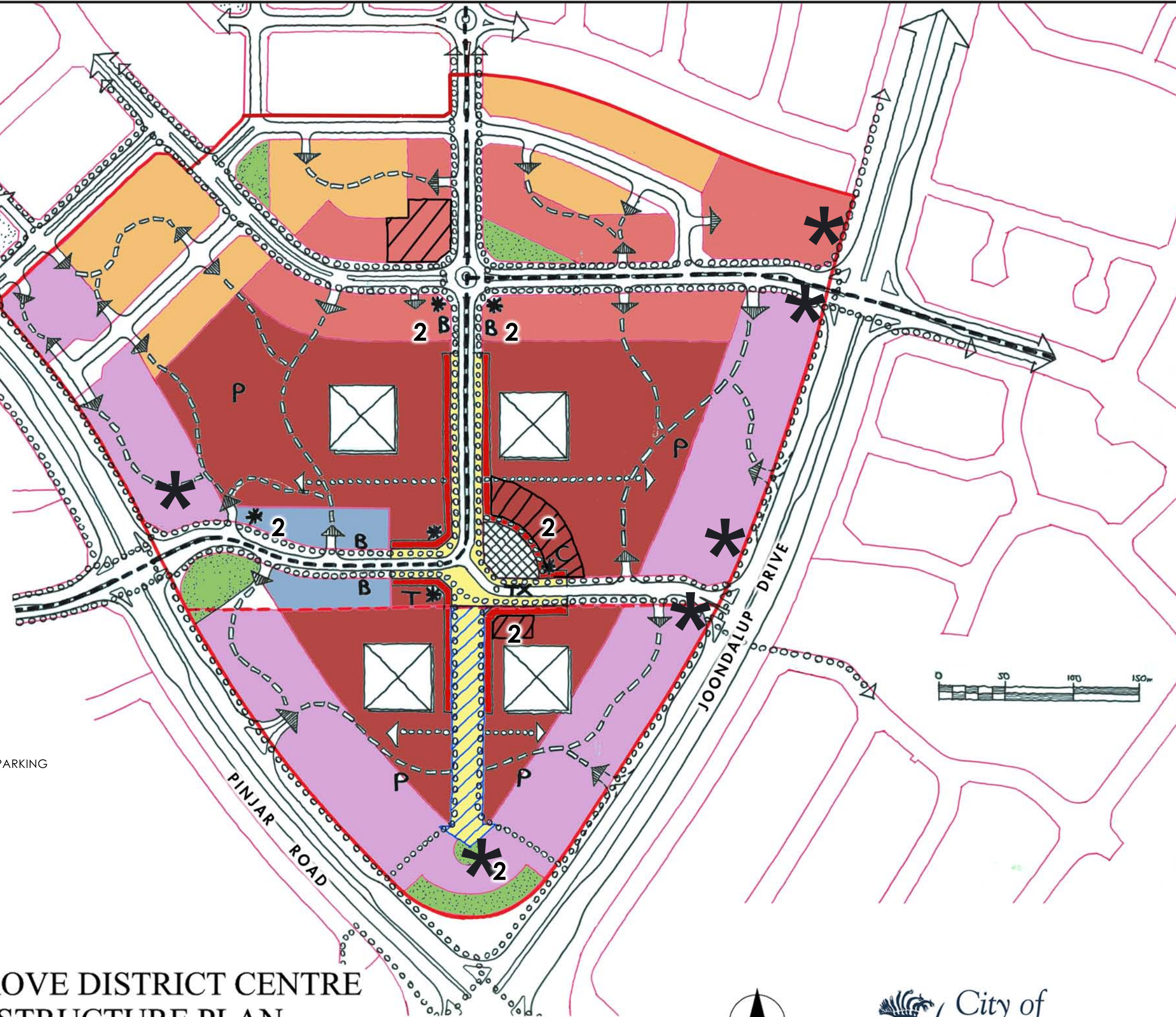


**LEGEND**

- DISTRICT CENTRE BOUNDARY
- BGJV/PEET & CO BOUNDARY
- RETAIL CORE  
Main Street design principles, nil setbacks to street
- INTERFACE MIXED USE PRECINCT  
Main Street design principles, nil setbacks to street
- RESIDENTIAL MIXED USE PRECINCT  
3m minimum setback (1.5m to verandah)
- EMPLOYMENT MIXED USE PRECINCT  
Main Street design principles, nil setbacks to street
- BUSINESS MIXED USE PRECINCT  
Address Pinjar Rd/Joondalup Dr: min 16m, max 24m setback
- PARK/STORMWATER MANAGEMENT
- MAIN STREET
- TOWN SQUARE
- EXTENSION OF MAIN STREET  
(as either a vehicular or pedestrian street)
- LARGE FORMAT RETAIL ELEMENT  
(sleeved from main street view)
- PRINCIPAL ENTRY POINT TO OFF-STREET PARKING
- PRIMARY LANDMARK ELEMENT
- SECONDARY LANDMARK ELEMENT
- PRINCIPAL PEDESTRIAN ROUTES
- INTERNAL VEHICLE CONNECTIVITY
- PRINCIPAL PARKING AREAS/FUTURE POTENTIAL DECKED PARKING
- COMMUNITY PURPOSES LOCATION
- PREFERRED TAVERN LOCATION
- BUS STOP LOCATIONS
- TAXI RANK
- INDICATIVE BUS ROUTES
- MIN. 2 STOREY ELEMENTS
- MANDATORY UPPER FLOOR RESIDENTIAL COMPONENT



**BANKSIA GROVE DISTRICT CENTRE  
LOCAL STRUCTURE PLAN  
CITY OF WANNEROO  
PLAN 1: STRUCTURE PLAN**

