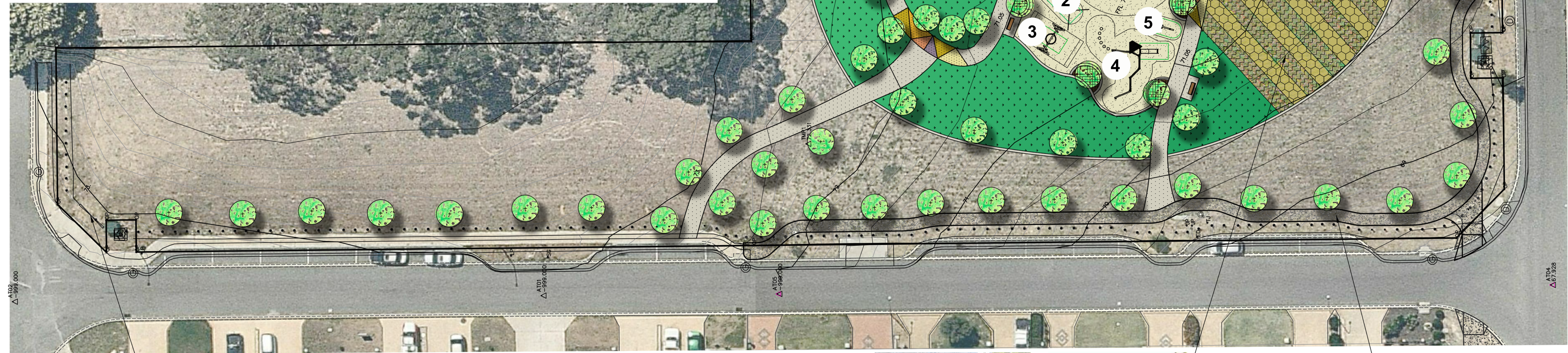


PLAY OPPORTUNITIES:

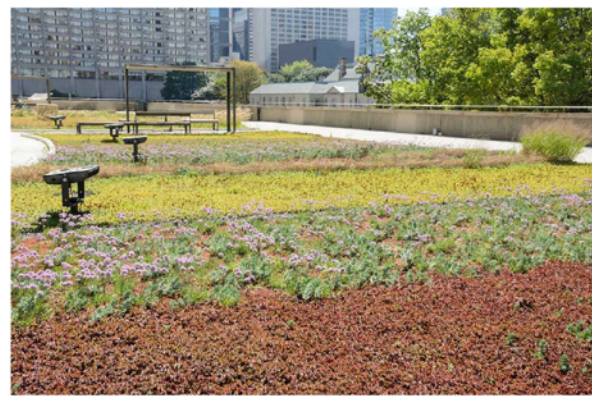


LEGEND

- FOOTPATH (CONCRETE)
- DECORATIVE CONCRETE IN FOOTPATH
- KERBING (FLUSH)
- PLANTING: 2X GROUNDCOVER SP. (370 M2)
- 1. - 5. PLAY EQUIPMENT PIECES
- ROLL-ON TURF (1,700 M2)
- ADVANCED TREE X 84 NO. VARIOUS SPECIES
- FOLLY (TIMBER) WITH CLIMBER SP.
- TABLE AND BENCH SETTING X2 NO.
- BENCH SEAT X2 NO.
- SOLAR LIGHT (SENSOR ACTIVATED)
- MULCH ONLY AREA (30 M2)
- SAND SOFTFALL (410 M2)

NOTES:

- ALL PRODUCTS, PLAY EQUIPMENT, URBAN FURNITURE, MATERIALS AND AREAS ON THIS PLAN ARE INDICATIVE ONLY. FOR THE PURPOSES OF COMMUNITY CONSULTATION. ACTUAL EQUIPMENT AND FINAL LAYOUT SHALL BE DETERMINED AT DETAIL DOCUMENTATION STAGE.
- SPECIES OF ALL PROPOSED TREES AND PLANTS SHALL BE DETERMINED AS PART OF DETAIL DOCUMENTATION.
- IRRIGATION DESIGN SUBJECT TO DETAIL DOCUMENTATION.



Rows of planting...



Inspired by the vineyard landscape

FOOTPATH CONNECTION WORKS BY OTHERS

CITY OF WANNEROO
INFRASTRUCTURE

SALITAGE PARK
PASSIVE PARK DEVELOPMENT
5 SALITAGE LINK
PEARSALL

CONCEPT PLAN
SHEET 1 OF 1

3169-01-0

A1

REVISION					REVISION					REVISION					
No.	BY	DATE	AUTH	No.	BY	DATE	AUTH	No.	BY	DATE	AUTH	No.	BY	DATE	AUTH
0		08/2015													
ISSUE FOR COMMUNITY CONSULTATION															