

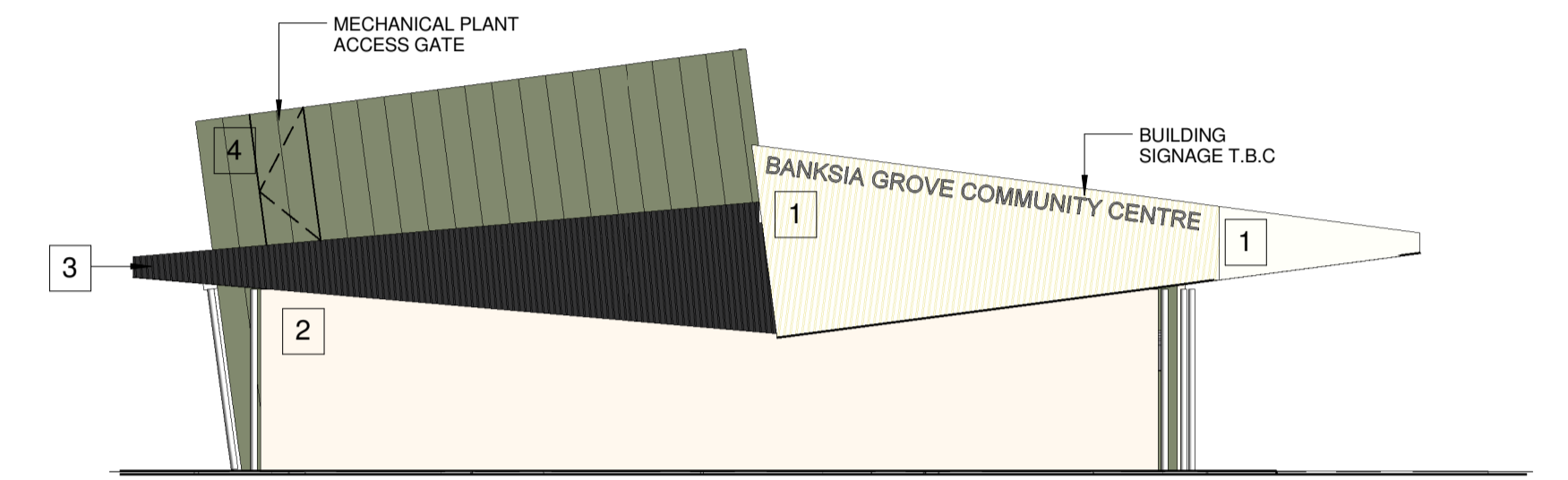
LEGEND

NOTES

- * - ALL WALLS TO BE 92mm STUD FRAMED WALLS (LIGHT GAUGE STEEL) LINED GENERALLY WITH 13mm IMPACTCHECK PLASTERBOARD.
- * - TRUSSES TO BE MADE OF LIGHT GAUGE STEEL.
- * - CEILINGS TO BE LINED GENERALLY WITH 13mm PLASTERBOARD.
- * - MULTIPURPOSE HALL CEILING TO BE LINED WITH ACOUSTIC CEILING.

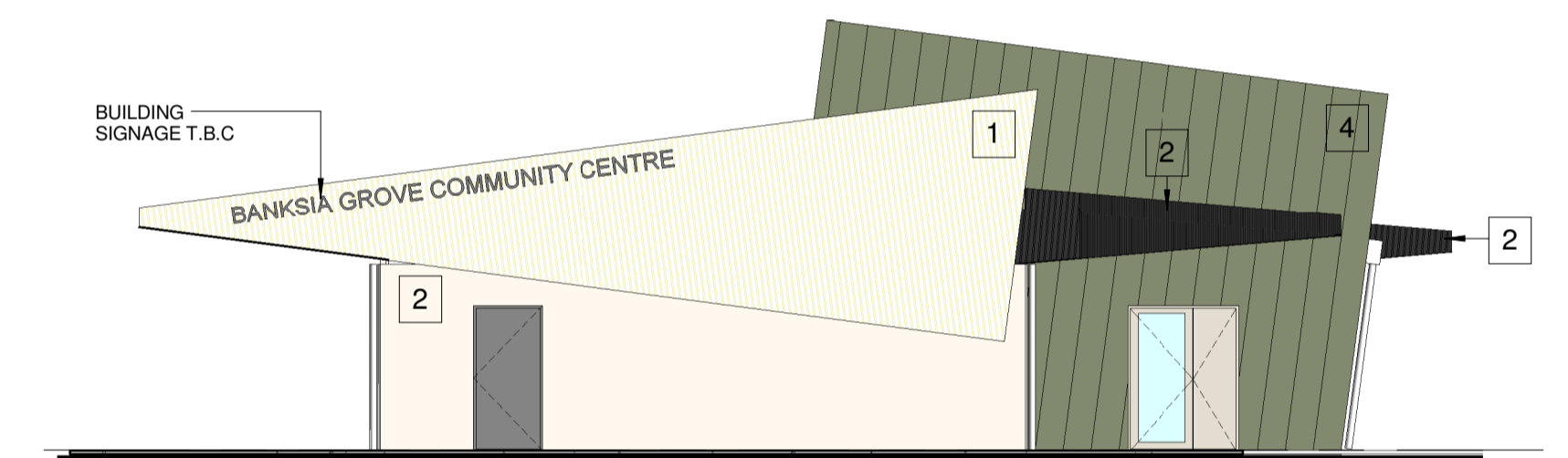
LEGEND

- 1 COLORBOND WHITEHAVEN SPANDEK ROOF SHEETING
- 2 RENDERED BRICKWORK
- 3 COLORBOND MONUMENT SPANDEK ROOF SHEETING
- 4 SCYON AXON WALL CLADDING
- 5 POLYCARBONATE TRANSLUCENT SHEETING (ROOF LIGHT) - GRECA PROFILE



EAST ELEVATION

1:100

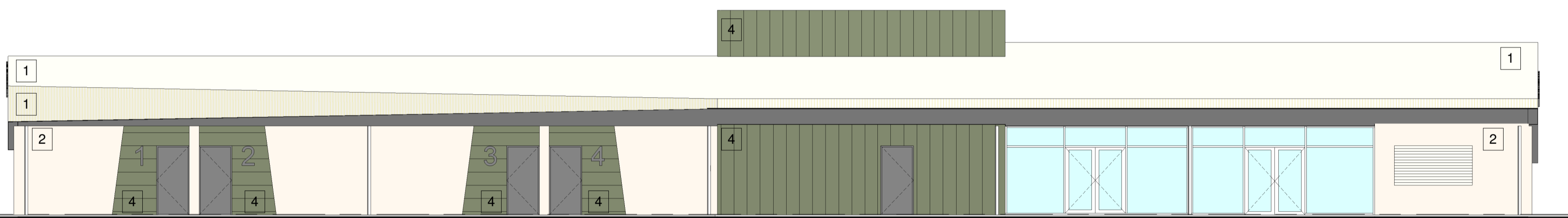


WEST ELEVATION

1:100

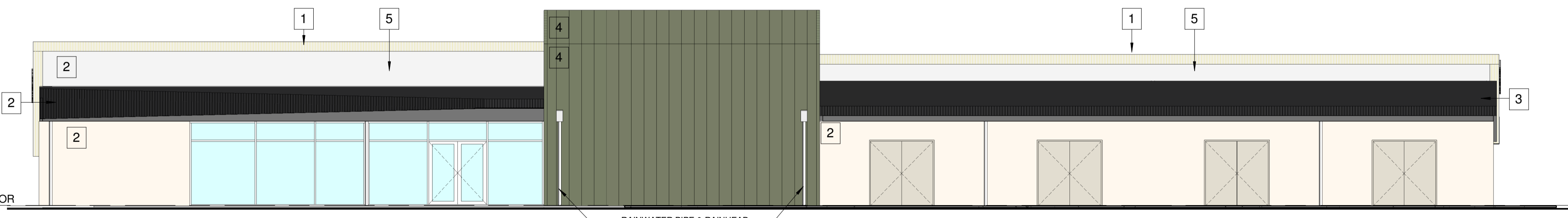
1-100 Ground Floor Sketch design

1:100



NORTH ELEVATION

1:100



SOUTH ELEVATION

1:100



NORTH

DESIGNED: PAUL EDWARDS	CHECKED: PAUL EDWARDS
ARCHITECT DIRECTOR	ARCHITECT DIRECTOR
DRAWN: ANDREW DE BOER	APPROVED: PAUL EDWARDS
DRAFTSPERSON	ARCHITECT DIRECTOR

site **Site Architecture Studio**
 Suite 11, 90 King Street Perth 6000 WA
 T 08 9226 5661 | F 08 9226 5662
 mail@sitearchitecture.com.au
 www.sitearchitecture.com.au

CITY OF WANNEROO
INFRASTRUCTURE

BANKSIA GROVE CLUBROOM
 BANKSIA GROVE SPORTS GROUNDS CHANGEROOM FACILITY
 2 GRANDIS BOULEVARD BANKSIA GROVE WA 6019

SKETCH DESIGN FLOOR PLAN & ELEVATIONS

NO.	REVISION	BY	DATE	AUTH	NO.	REVISION	BY	DATE	AUTH	NO.	SCALE	APPROVED:	DRAWN/DESIGNED:	APPROVED:	TRIM FILE NO.	DRAWING NO.	SHEET	REVISION	ORIGINAL DRG. SIZE
-	ISSUED TO CONSULTANTS	PE	25.11.15								1:100		SITE ARCHITECTURE STUDIO		14481	3189-SK01 - B	A1		
A	ISSUED FOR SCHEMATIC DESIGN REPORT	PE	01.12.15										RESONER						
B	SCHEMATIC DESIGN REPORT UPDATE	PE	07.12.15										APPROVED:		PR-2819				