

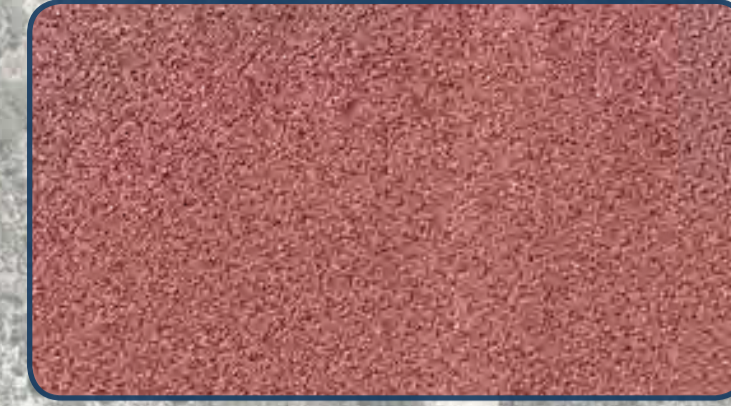
- LEGEND
-  Prevailing winds
 -  Major access
 -  Pedestrian access
 -  Views
 -  Dune erosion
 -  Vantage point



Dune rehabilitation: local community educational planting program.



Sealed path: access path network constructed from asphalt on limestone base. Dark colours are recessive in landscapes.



Coloured asphalt



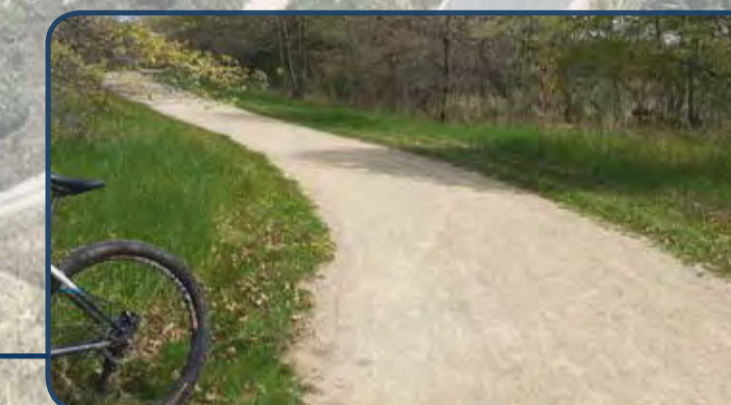
Compacted crushed limestone



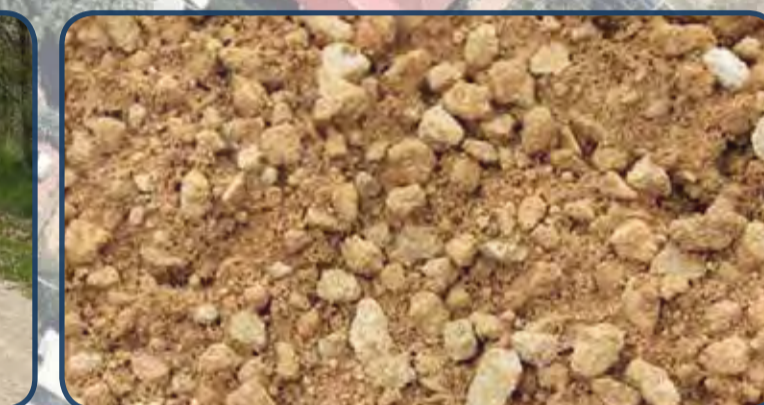
Seating lay-by: small seating lay-by nestled amongst existing tree canopy. Seating offers a break within the walk and an opportunity



Interpretation signage: signage will document cultural history and identify local landmarks, flora and fauna.



Limestone path



Compacted crushed limestone



Lookout: vantage point shelter with interpretation signage.



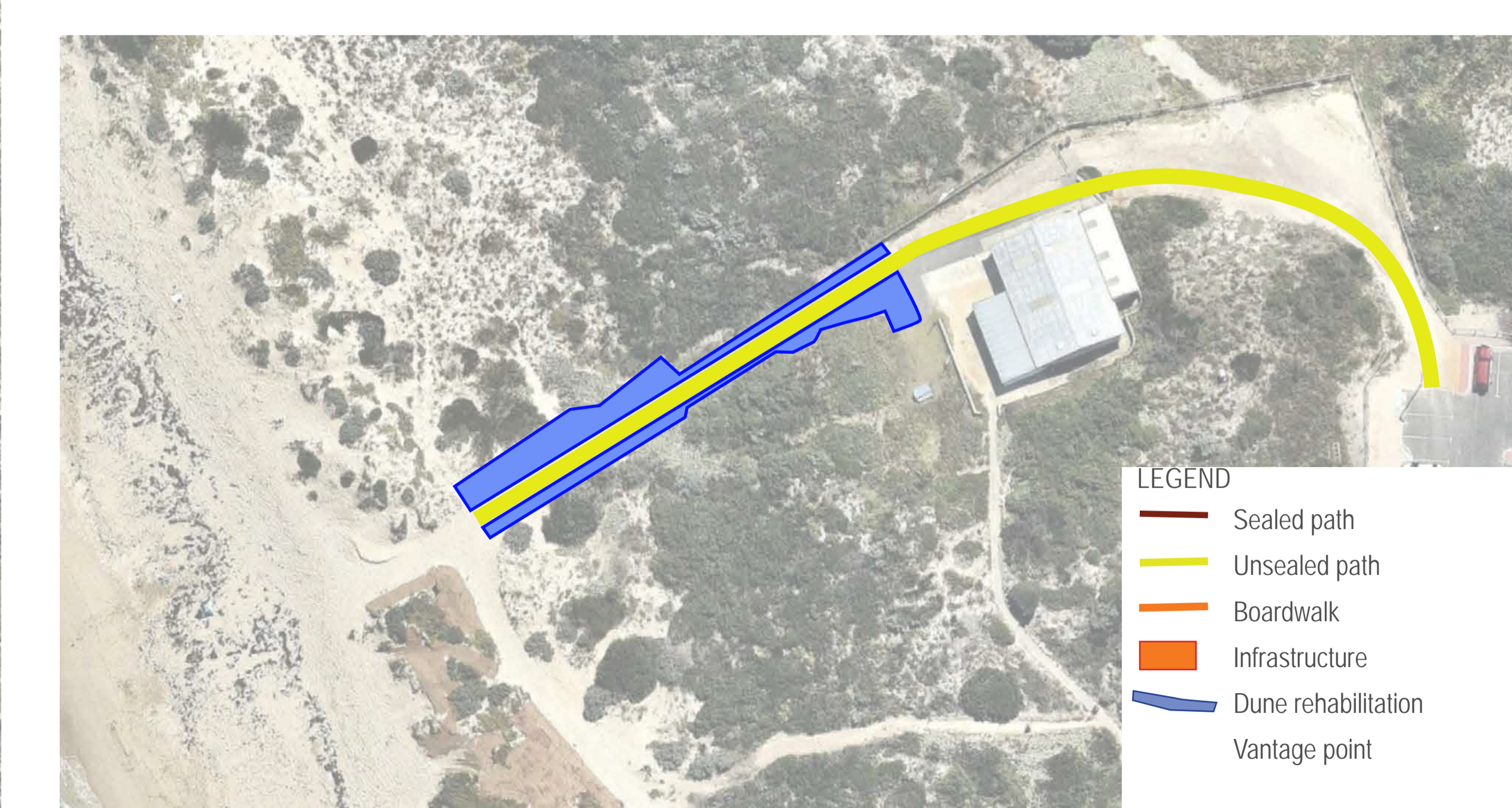
Boardwalk: access boardwalk constructed from composite materials. Recessive colour selections aligned with existing infrastructure.



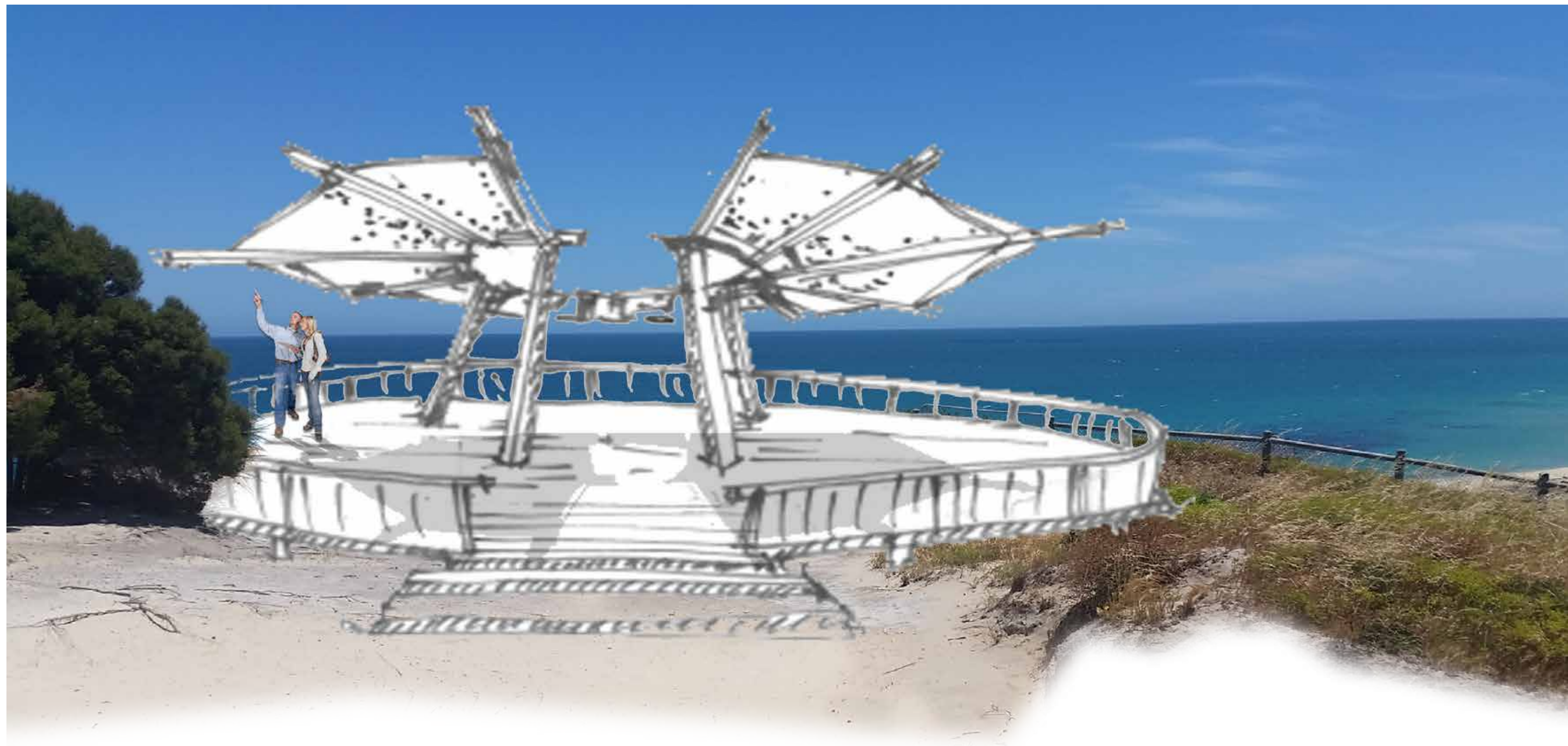
Fibre Reinforced Plastic (FRP): low maintenance materials allow sand to permeate and shrubs to grow through.



Protection fencing: sand drift dune fencing to restrict access, protect rehabilitation areas and mitigate sand drift.



- LEGEND**
- Sealed path
 - Unsealed path
 - Boardwalk
 - Infrastructure
 - Dune rehabilitation
 - Vantage point



LOOKOUT PERSPECTIVE



SEATING LAY-BY PERSPECTIVE