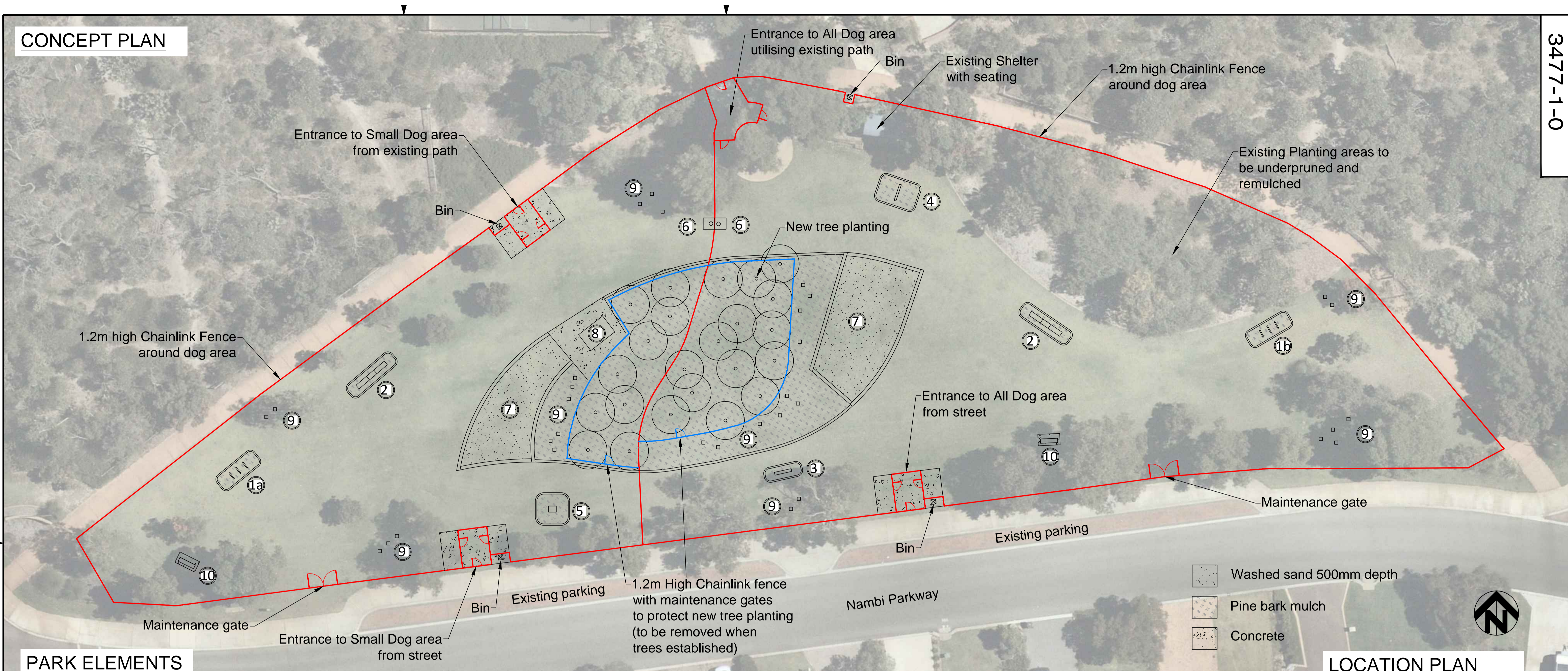


CONCEPT PLAN

3477-1-0



PARK ELEMENTS

LOCATION PLAN



1 Dog agility : Triple hurdles (Replas or equal)
a. 250mm high b. 400mm high



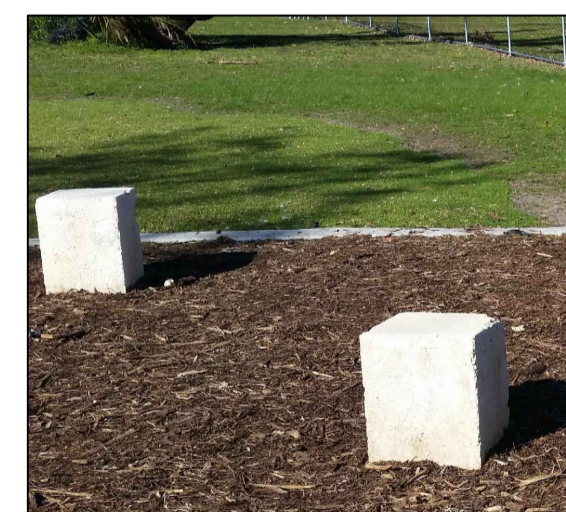
3 Dog agility : Balance beam (Replas or equal)



5 Dog agility : Sit stay (Replas or equal)



7 Dog sand play area with limestone seating



9 Limestone block seating



Chainlink fence



2 Dog agility : Bridge (Replas or equal)



4 Dog agility : Hoop (Willplay or equal)



6 Drinking fountain in 1.2m square concrete pad with drainage channel and soakwell



8 New picnic table and shelter to match existing (montego by Exteria or equal). New and existing shelter shall have security lighting subject to power availability and funding.



10 Seats (parkway by Exteria or equal)

PLEASE NOTE:
Layout, materials and areas on this drawing are indicative only for the purposes of consultation. Final layout and materials shall be determined at documentation stage.

* INDICATES SIGNATURES ON ORIGINAL ISSUE OF DRAWING.

AUTHORISED:
* S.SPINKS
MANAGER COMMUNITY FACILITIES 23/4/2018

AUTHORISED:
* L.NICHOLSON
MANAGER INFRASTRUCTURE CAPITAL WORKS 23/4/2018

APPROVED:
* P.WILLIAMS
COORDINATOR DESIGN 23/4/2018

AUTHORISED:
* G.CHETTLEBURG
MANAGER PARKS & CONSERVATION MANAGEMENT 26/4/2018

FILE No. 30651

PROJECT No. PR - 4152

CITY OF WANNEROO
ASSETS

DELAMARE PARK
DOG EXERCISE AREA
BANKSIA GROVE

CONCEPT PLAN
SHEET 1 OF 1

DRAWING No. SHEET REVISION ORIGINAL DRG. SIZE

3477-1-0 **A1**

No.	REVISION	BY	DATE	AUTH	No.	REVISION	BY	DATE	AUTH
A	DRAW COPY FOR COMMENT	KD	3/2018						
B	DRAW COPY FOR COMMENT	KD	3/2018						
C	ISSUED	KD	4/2018						

No.	REVISION	BY	DATE	AUTH	No.	REVISION	BY	DATE	AUTH

SCALE: 1:200	SCALE IN METRES	GRID: PCG	PCG
--------------	-----------------	-----------	-----

SURVEYED: - SURVEYOR: K.ONDEK LANDSCAPE DESIGNER 4/2018
--

DRAWN: K.ONDEK LANDSCAPE DESIGNER 4/2018	CHECKED: * P.WILLIAMS COORDINATOR DESIGN 23/4/2018
---	---

APPROVED: * H.SINGH DIRECTOR ASSETS 1/5/2018
