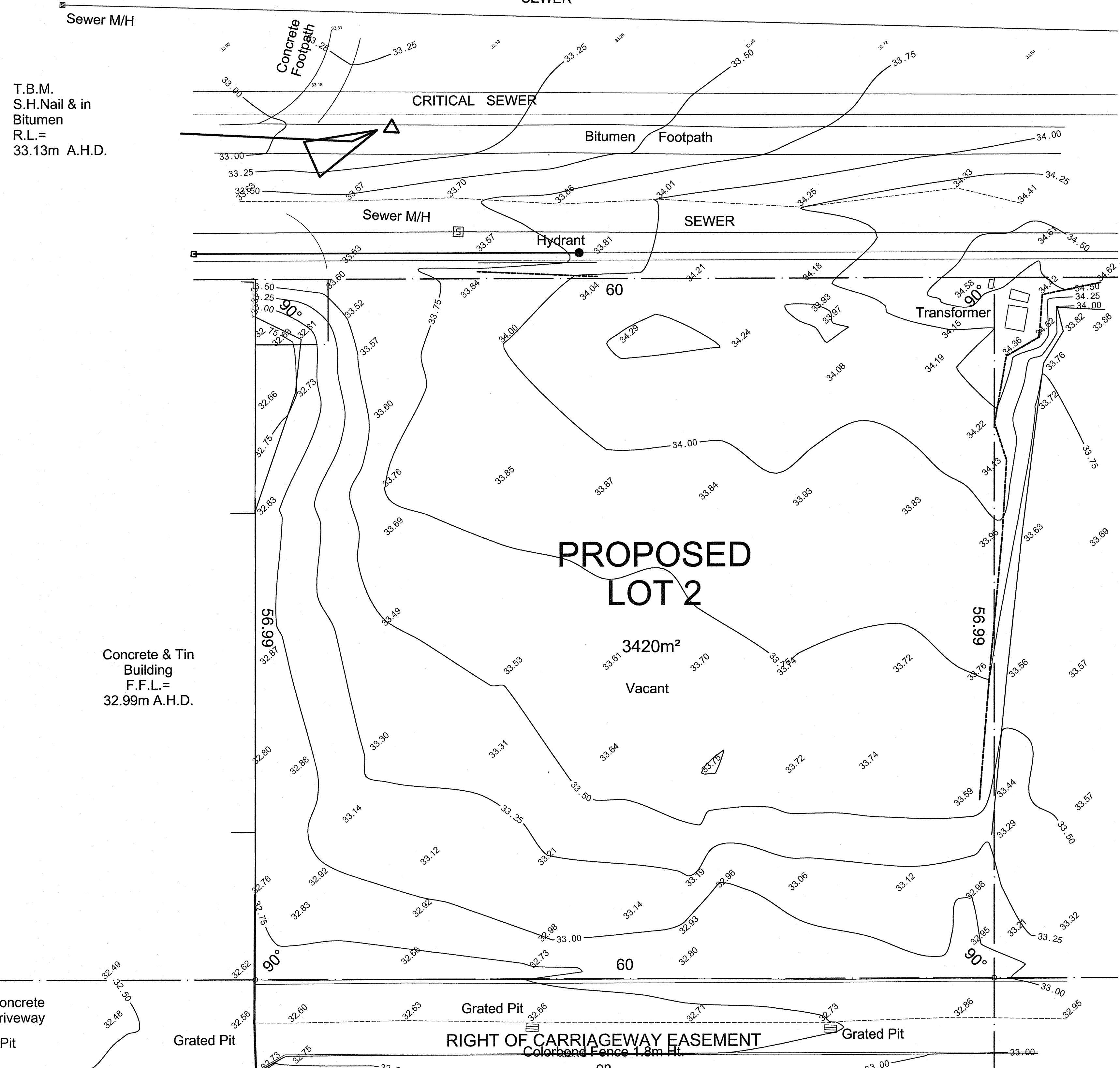


No	DATE	ISSUE / REVISION
A	12.03.18	ISSUE FOR DEVELOPMENT APPROVAL

# Yanchep Beach Road



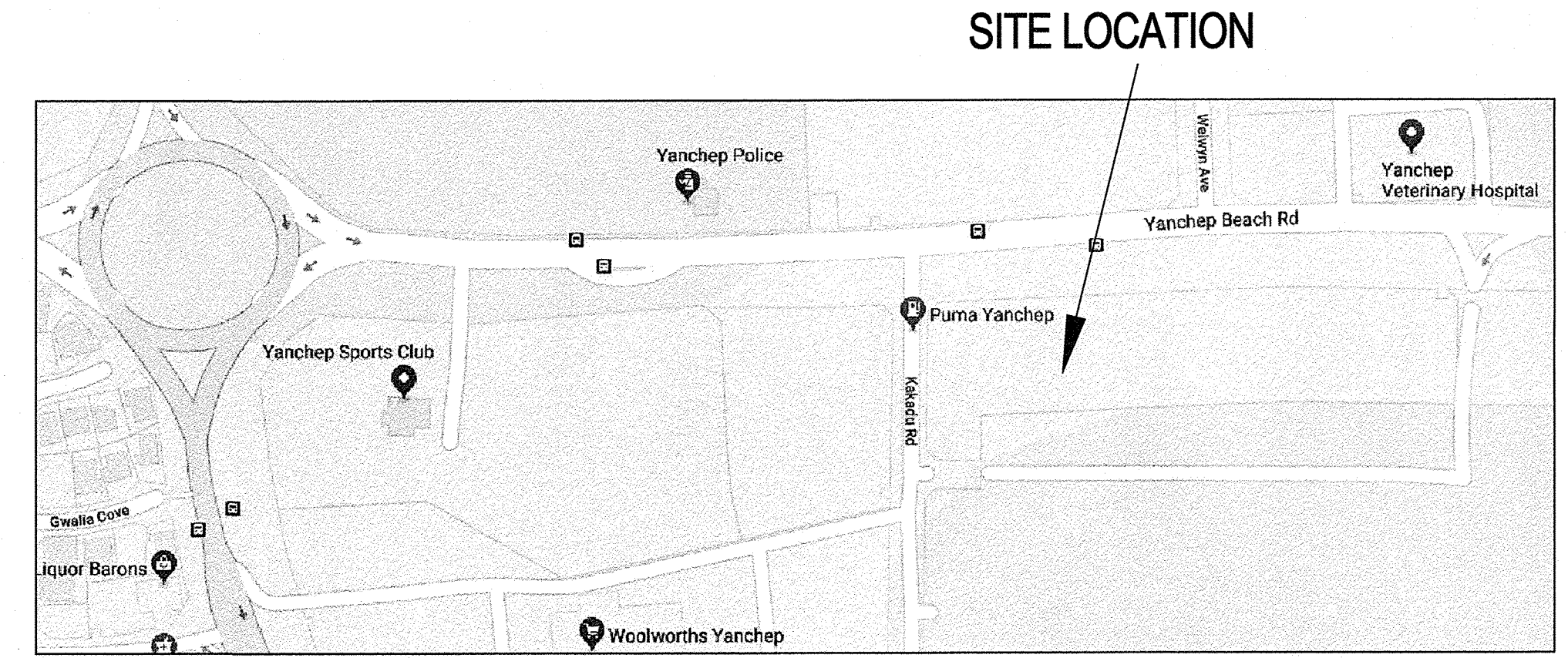
T.B.M.  
S.H.Nail & in  
Bitumen  
R.L.=  
33.13m A.H.D.

Concrete & Tin  
Building  
F.F.L.=  
32.99m A.H.D.

NOTE: All Features shown are positioned from existing features (walls & fences). These features may not be on the correct alignment. Thompson Surveying Consultants STRONGLY recommend that a Resurvey be carried out before any plans are drafted.

NOTE: No Boundary Marks Found

NOTE: Lots yet to be surveyed. Please see final dimensions upon issue of titles.



**NOT FOR CONSTRUCTION**  
**ISSUE FOR DEVELOPMENT APPROVAL**

**OFF2SITE PROJECTS**

OFF2SITE PROJECTS PTY LTD  
PHONE: 0412 281 407  
EMAIL: off2site@inet.net.au

CLIENT: **CARDIFF CAPITAL PTY LTD**

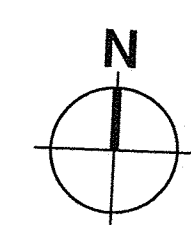
PROJECT: **COMMERCIAL DEVELOPMENT**  
**LOT 2 YANCHEP BEACH ROAD, YANCHEP**

DRAWING: **EXISTING SURVEY**

PROJECT DATE: **SEPTEMBER 2017** DWG No: **DA100** REV: **A**  
PROJECT No: **17028**  
SCALE: **1:200 @ A1**

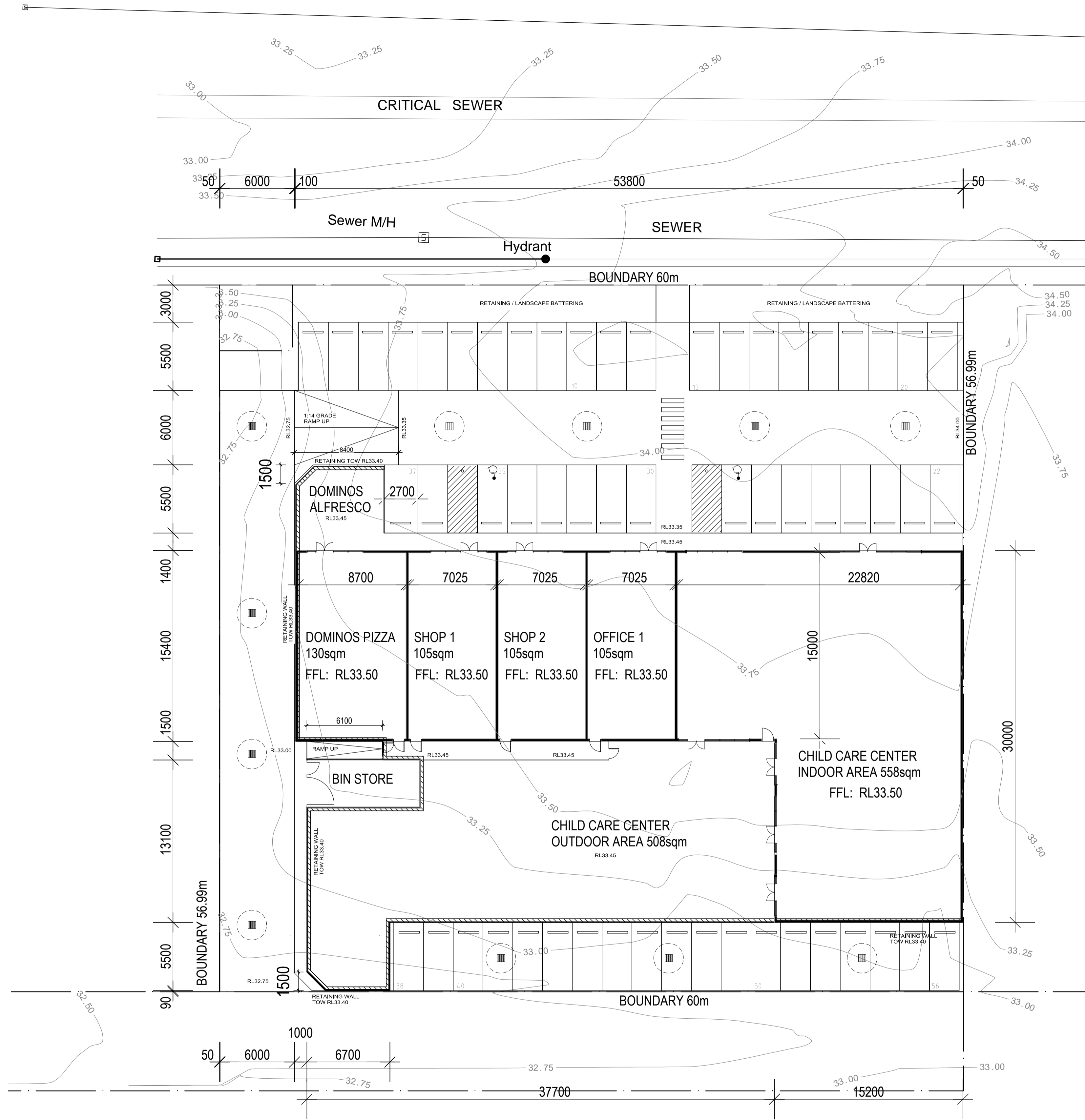
DO NOT SCALE. IF IN DOUBT, ASK. ALL DIMENSIONS IN MILLIMETERS. VERIFY ALL SETOUTS ON SITE BEFORE COMMENCING ANY WORKS. IT IS AN INFRINGEMENT OF COPYRIGHT IN THIS DRAWING AND DESIGN TO COPY OR COMMUNICATE ITS CONTENTS TO ANY THIRD PARTY WITHOUT WRITTEN CONSENT OF OFF2SITE PROJECTS.

25      26      27 =32.69m      28 =32.85m      29      30 =33.04m      31 =33.23m      32      33



EXISTING SURVEY  
SCALE 1:200

No	DATE	ISSUE / REVISION
A	12.03.18	ISSUE FOR DEVELOPMENT APPROVAL
B	17.05.18	REVISED DEVELOPMENT APPLICATION
C	01.06.18	REVISED DEVELOPMENT APPLICATION



**SITE PLAN**  
SCALE 1:200

**PARKING REQUIREMENTS**

**DOMINOS PIZZA**  
1 BAY PER 4 PERSONS INDOOR AND OUTDOOR SEATS  
32 PATRON SEATS / 4  
= 8 BAYS  
10 STAFF  
= 8 BAYS

**OFFICE**  
1 BAY PER 30sqm  
105 sqm / 30  
= 4 BAYS

**SHOP; 2 NO**  
7 BAYS PER 100sqm  
210 sqm / 100  
= 14 BAYS

**CHILD CARE CENTRE**  
= 22 BAYS

**PARKING REQUIRED FOR 68 CHILD, CHILD CARE CENTRE:**

CHILDREN 0-1	12 CHILDREN	1 TEACHER PER 4 CHILDREN	3 TEACHERS REQ
CHILDREN 1-2	16 CHILDREN	1 TEACHER PER 4 CHILDREN	4 TEACHERS REQ
CHILDREN 2-3	20 CHILDREN	1 TEACHER PER 5 CHILDREN	4 TEACHERS REQ
CHILDREN 3+	20 CHILDREN	1 TEACHER PER 10 CHILDREN	2 TEACHERS REQ

**PARKING REQUIRED 1 BAY PER TEACHER, THEREFORE 13 BAYS REQUIRED**  
**PARKING REQUIRED FOR 65-72 CHILDREN - 9 BAYS**

**CHILD CARE CENTRE (68 CHILD)**  
13 BAYS TEACHERS & 9 BAYS CHILDREN      22 CARBAYS

**TOTAL BAYS REQUIRED = 56 BAYS**

**BAYS AVAILABLE = 56**

**STORMWATER SOAKWELL CALCULATION**  
STORMWATER DRAINAGE TO COMPLY WITH AS / NZS 3500.3

EQUIVALENT IMPERVIOUS AREA	ROOF	1050sqm
	CARPARK	1535sqm
	TOTAL	2585sqm

SOAKWELL SIZE    2.4m DIAMETER x 2.4m DEEP  
THEREFORE 229.31m<sup>3</sup> - AREA SERVED FOR 100 YEAR 24 HOUR STORM

SOAKWELL SIZE / EIA                      229.31m<sup>3</sup> / 2585sqm  
NUMBER OF SOAKWELLS REQUIRED      11no (EACH 2.4m x 2.4m)

**WASTE COLLECTION**  
CITY OF WANNEROO DOES NOT PROVIDE A RUBBISH COLLECTION SERVICE FOR NON-RESIDENTIAL PROPERTIES.  
THE BUILDING STRATA MANAGER WOULD INCLUDE A WASTE COLLECTION SERVICE, PAID FOR FROM THE VARIABLE OUTGOINGS. EACH TENANTS WASTE COLLECTION WOULD BE BASED ON A BUSINESS BY BUSINESS NEED.  
FOR EXAMPLE, THE DOMINOS TENANCY MAY NEED DAILY COLLECTIONS, WHERE AS THE OFFICE MAY ONLY NEED WEEKLY.  
THE LIKES OF CLEANAWAY WOULD BE ENGAGED TO PROVIDE A COMBINED SERVICE FOR GENERAL WASTE, RECYCLING, GREASE TRAP EMPTYING ETC.  
COLLECTION OF BINS WOULD BE ON WEEKDAYS AFTER 7.30AM AND BEFORE 6PM  
TO ENABLE RUBBISH TRUCK ACCESS AND PREVENT THE NEED FOR REVERSING ONTO IKARA LANE, A ONE WAY TRUCK ACCESS PATH WOULD BE IMPLEMENTED - PAST THE BIN STORE, TURN AT RIGHT AT DOMINOS, ALONG THE FRONT OF THE DEVELOPMENT, ALONG THE FRONT OF THE NEIGHBOURING DEVELOPMENT, AND DOWN THE LANEWAY BETWEEN THIS NEIGHBOURING PROPERTY AND THE NEWLY COMPLETED MEDICAL CENTRE

**NOT FOR CONSTRUCTION**

**ISSUE FOR DEVELOPMENT APPROVAL**

**OFF2SITE PROJECTS**

OFF2SITE PROJECTS PTY LTD  
PHONE: 0412 281 407  
EMAIL: off2site@inet.net.au

CLIENT: **CARDIFF CAPITAL PTY LTD**

PROJECT: **COMMERCIAL DEVELOPMENT**

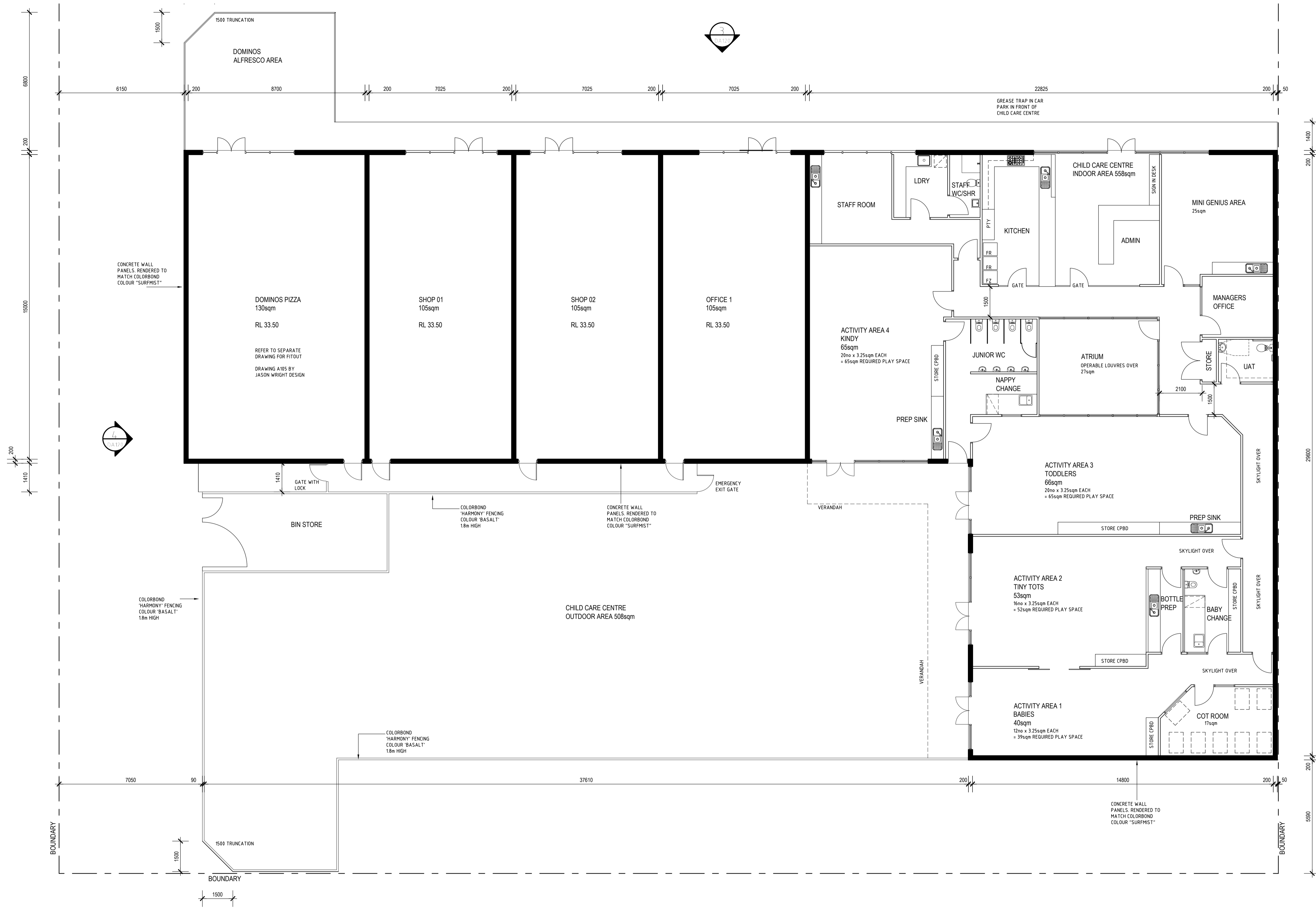
**LOT 2 YANCHEP BEACH ROAD, YANCHEP**

DRAWING: **SITE PLAN**

PROJECT DATE	SEPTEMBER 2017	DWG No	DA101	REV	C
PROJECT No	17028				
SCALE	1 : 200 @ A1				

DO NOT SCALE - IF IN DOUBT, ASK. ALL DIMENSIONS IN MILLIMETERS.  
VERIFY ALL SETOUTS ON SITE BEFORE COMMENCING ANY WORKS.  
IT IS AN OBLIGATION OF COPYRIGHT IN THIS DRAWING AND DESIGN TO COPY OR COMMUNICATE ITS CONTENTS TO ANY THIRD PARTY WITHOUT WRITTEN CONSENT OF OFF2SITE PROJECTS

No	DATE	ISSUE / REVISION
A	12.03.18	ISSUE FOR DEVELOPMENT APPROVAL
B	17.05.18	REVISED DEVELOPMENT APPLICATION
C	01.06.18	REVISED DEVELOPMENT APPLICATION



**NOT FOR  
CONSTRUCTION**

**ISSUE FOR  
DEVELOPMENT APPROVAL**

**OFF2SITE  
PROJECTS**

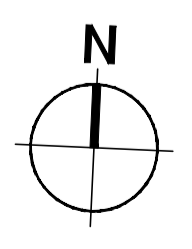
OFF2SITE PROJECTS PTY LTD  
PHONE: 0412 281 407  
EMAIL: off2site@inet.net.au

CLIENT: **CARDIFF CAPITAL PTY LTD**

PROJECT: **COMMERCIAL DEVELOPMENT**  
**LOT 2 YANCHEP BEACH ROAD, YANCHEP**

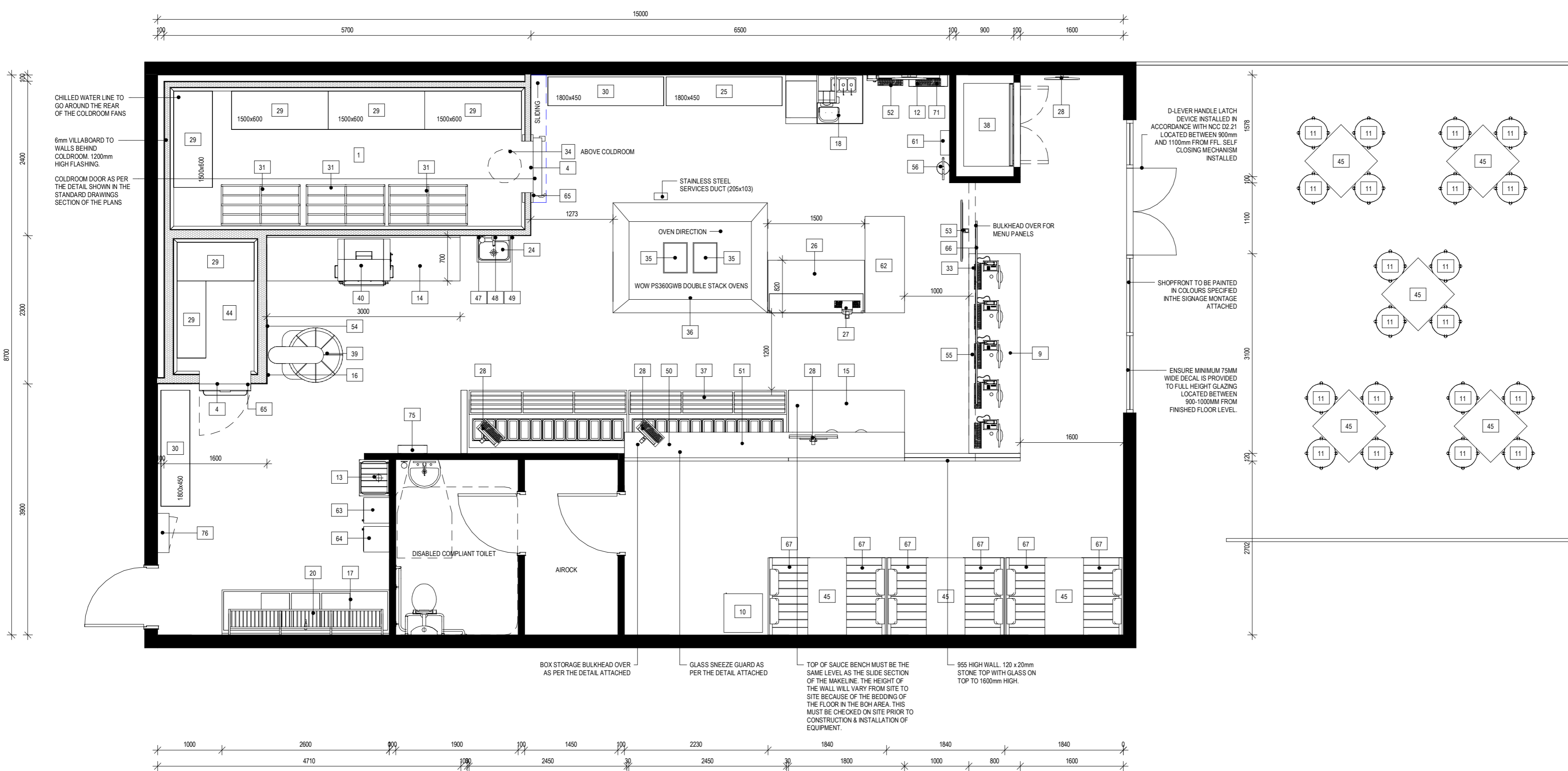
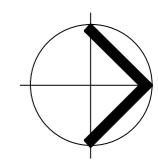
DRAWING: **FLOOR PLANS**

PROJECT DATE: <b>SEPTEMBER 2017</b>	DWG No: <b>SK110</b>	REV: <b>C</b>
PROJECT No: <b>17028</b>		
SCALE: <b>1 : 100 @ A1</b>		



**FLOOR PLAN**  
SCALE 1:100

DO NOT SCALE - IF IN DOUBT, ASK. ALL DIMENSIONS IN MILLIMETERS.  
VERIFY ALL SET-OUTS ON SITE BEFORE COMMENCING ANY WORKS.  
IT IS AN infringement of COPYRIGHT IN THIS DRAWING AND DESIGN TO COPY OR COMMUNICATE  
ITS CONTENTS TO ANY THIRD PARTY WITHOUT WRITTEN CONSENT OF OFF2SITE PROJECTS



1 FLOOR PLAN  
1 : 50

FURNITURE, FIXTURE & EQUIPMENT SCHEDULE

No.	EQUIPMENT	SUPPLIER	DESCRIPTION	No.	EQUIPMENT	SUPPLIER	DESCRIPTION
1	MEDIUM TEMP COLDROOM	SHOPFITTER	100mm COLDROOM PANEL CONSTRUCTION	39	DOUGH MIXER	CSS	ATLAS 3 PHASE 20AMP DOUGH MIXER MODEL No 580. 200kg NET WEIGHT.
2	KITCHEN AREA PARTITION WALL	SHOPFITTER	50mm COLDROOM PANEL CONSTRUCTION END CAPPED WITH STAINLESS STEEL	40	DOUGH SHEETER	CSS	ATLAS DOUGH SHEETER MODEL No SH500 PR20. 15AMP 195kg NET WEIGHT.
3	INFILL PANEL ABOVE COLDROOM	SHOPFITTER	50mm COLDROOM PANEL CONSTRUCTION TO INFILL ABOVE COLDROOM	41	DISHWASHER	CSS	PASS THROUGH DISHWASHER
4	PLASTIC CURTAIN	CSS/ SHOPFITTER	FLEXIBLE PVC COLDROOM PLASTIC CURTAIN AT COLDROOM ENTRANCE	42	FREEZER	CSS	CHEST FREEZER 2050L x 780D WITH STAINLESS STEEL TOP OR 2 DOOR UPRIGHT
5	CUSTOMER AREA PARTITION	SHOPFITTER	76mm GAL CHANNEL STUD WALL OR 75mm COLDROOM PANEL WITH 6mm VILLABOARD TO BOTH SIDES OF WALL	43	STAFF NOTICE BOARD	CSS	CORK TYPE STAFF NOTICE BOARD. SIZE TO BE CONFIRMED ON SITE.
6	MANAGERS DESK/ ORDER TAKER	CSS	MANAGERS DESK AS PER STANDARD DRAWINGS/ WALL MOUNTED ORDER TAKER.	44	LOW TEMP COLDROOM	SHOPFITTER	LOW TEMP COLDROOM CONSTRUCTED FROM 150mm COLDROOM PANEL
7	VINYL GRAPHIC	SIGN CONTRACTOR	VINYL WALL GRAPHIC	45	CUSTOMER TABLE	SHOPFITTER	750H CUSTOMER AREA TABLE AS SHOWN IN THE FLOOR PLAN ATTACHED.
8	SHOPFRONT	EXISTING	IF PROPOSED FRAMELESS GLAZED SHOPFRONT. ALUMINIUM ANODISED EDGES	46	FRAMED WALL ART	SIGNAGE COMPANY	FRAMED WALL ART
9	POS MODULE	CSS	CONSTRUCTED AS PER THE STANDARD DRAWINGS ATTACHED.	47	PAPER TOWEL BIN	CSS	SMALL PAPER TOWEL DISPOSAL BIN.
10	CUSTOMER AREA BIN	SHOPFITTER	JOINERY CABINET AS PER THE STANDARD DRAWINGS ATTACHED.	48	PAPER TOWEL DISPENSER	CSS	PAPER TOWEL DISPENSER TO COMPLY WITH AS 4674 & THE LOCAL HEALTH REQUIREMENTS.
11	CUSTOMER SEATING	CSS	CUSTOMER SEAT STANDARD CHAIR HEIGHT.	49	ANTI BACTERIAL DISPENSER	ECOLAB DISTRIBUTOR	ANTI BAC DISPENSER FOR HAND WASHING TO COMPLY WITH AS 4674 & THE LOCAL HEALTH REQUIREMENTS.
12	DRIVERS DROP BOXES	CSS	WALL MOUNTED DROP BOXES FOR DELIVERY DRIVER MONEY DROP	50	CHART HOLDER RAILS	SHOPFITTER	TBC
13	CLEANERS SINK	CSS	STOODARTS STAINLESS STEEL CLEANERS SINK MODEL No SCS01	51	MAKELINE CHART	PURE PRINT	TBC
14	DOUGH PRODUCTION BENCH	CSS	STAINLESS STEEL BENCH AS PER THE STANDARD DRAWINGS ATTACHED.	52	DRIVERS SIGN OUT TERMINAL	DPE IT	COMPUTER TERMINAL WALL MOUNTED FOR THE SIGN OUT OF DRIVERS.
15	SAUCE BENCH	SHOPFITTER	STAINLESS STEEL BENCH AS PER THE STANDARD DRAWINGS ATTACHED. TOP FINISH AS SHOWN IN THE FLOOR PLAN ATTACHED.	53	GPS TRACKER SCREEN	DPE IT	32" TV SCREEN
16	ALUMINIUM WALL SHEETING	SHOPFITTER	ALUMINIUM WALL SHEETING TO WALL BEHIND DOUGH MIXER AS PER STANDARD DRAWINGS ATTACHED.	54	CHILLED WATER OUTLET	SHOPFITTER	SPECIFICATIONS INCLUDED IN THE PLUMBING SPECIFICATIONS.
17	WASH UP SINK	CSS	STAINLESS STEEL WASH UP SINK AS PER STANDARD DRAWINGS ATTACHED.	55	SAFE	LONDON FIRE & SAFE	600H x 500W x 475D SAFE
18	ICE CREAM MACHINE	CSS	ICE CREAM MACHINE SIZE TO BE CONFIRMED.	56	FIRE EXTINGUISHER	SHOPFITTER	1 x 2.5kg ABE DRY CHEMICAL WITH ASSOCIATED 18 x 1.2 WOVEN GLASS FINE BLANKET
19	PIZZA SLIDE SHELF	CSS	STAINLESS STEEL SLIDE SHELF MOUNTED ON SAUCE BENCH	57	COMPUTER TERMINAL	DPE IT	ORDERING TERMINAL INSTALLED BY THE IT DEPARTMENT
20	PIZZA PAN RACK	CSS	STAINLESS STEEL RACK MOUNTED ABOVE WASH UP SINK AS PER THE STANDARD DRAWINGS ATTACHED.	58	PHONE	DPE IT	PHONE SUPPLIED BY CSS INSTALLED BY THE NOMINATED ELECTRICIAN.
21	DISHWASHER RACK	CSS	STAINLESS STEEL BENCH WITH RAILS UNDER TO STORE PASS THROUGH DISHWASHER RACKS	59	IDE	TELSTRA	TELSTRA IDF WALL MOUNTED.
22	PIZZA PAN TROLLEY	CSS	PIZZA PAN TROLLEY AS PER THE STANDARD DRAWINGS ATTACHED.	60	SECURITY SYSTEM	SECURITY COMPANY	SELECTED SECURITY SYSTEM APPROVED BY DOMINO'S PIZZA
23	DOUGH ROUNDER	CSS	ATLAS AUTO DOUGH DIVIDER ROUNDER A11	61	FIRST AID KIT	CSS	APPROVED FIRST AID KIT TO COMPLY WITH THE AUSTRALIAN STANDARDS
24	HAND BASIN	SHOPFITTER	STOODARTS SK0B1 STAINLESS STEEL HAND BASIN	62	HOTBOX	CSS	HOTBOX CABINET
25	HOT CELL RACK	CSS	MANTOVA RACK WITH HOT CELL UNIT MOUNTED TO EACH SHELF	63	CLEANERS CABINET	CSS	CLEANERS CABINET FOR STORAGE OF CHEMICALS & EQUIPMENT AS PER THE STANDARD DRAWINGS ATTACHED.
26	CUT BENCH	CSS	STAINLESS STEEL BENCH AS PER THE STANDARD DRAWINGS ATTACHED.	64	STAFF LOCKERS	CSS	STAFF LOCKERS FOR STORAGE OF STAFF BELONGINGS AS PER THE STANDARD DRAWINGS ATTACHED.
27	RECEIPT PRINTER	CSS	RECEIPT PRINTER MOUNTED ON SUSPENDED SERVICE POLE FROM CEILING	65	COLDROOM DOOR BUZZER	CSS	BUZZER AT COLDROOM DOOR TO NOTIFY STAFF WHEN DOOR IS LEFT OPEN
28	MAKELINE/ CUSTOMER MONITOR	DPE IT	SELECTED MONITOR MOUNTED TO SUSPENDED STAINLESS STEEL DROPPER. ALL CABLING TO BE HIDDEN INSIDE DROPPER	66	MENU BOARD	CSS	MENUPANEL APPROVED BY DOMINO'S PIZZA
29	COLDROOM STORAGE RACK	CSS	MANTOVA RACK	67	BOOTH SEATING	SHOPFITTER	CUSTOMER BOOTH SEATING. DIMENSIONS SHOWN ON THE FLOOR PLAN
30	DRY STORAGE RACK	CSS	MANTOVA RACK	68	MOFFAT TURBOFAN OVEN	CSS	E33T5H10T MOFFAT TURBOFAN CONVECTION OVEN & PROOFER.
31	DUNNAGE RACK	CSS	STAINLESS STEEL RACK AS PER THE STANDARD DRAWINGS ATTACHED.	69	STOOL SEATING	CSS	750mm HIGH STOOL SEATING.
32	STAINLESS STEEL WALL CAPPING	SHOPFITTER	STAINLESS STEEL SHEET CAPPING AT END OF PARTITION WALL. REFER TO THE STANDARD DRAWINGS ATTACHED.	70	MANAGERS PRINTER	DPE IT	SELECTED PRINTER BY DOMINO'S PIZZA'S IT DEPARTMENT
33	PHONE/ COMPUTER SYSTEM	DPE IT	COMPUTER SYSTEM SUPPLIED BY DOMINO'S PIZZA'S IT DEPARTMENT	71	GPS TERMINAL	DPE IT	GPS WALL MOUNTED TERMINAL.
34	HOT WATER UNIT	SHOPFITTER	50 LITRE 3 PHASE QUICK RECOVERY HOT WATER UNIT	72	SERVER CABINET	ELECT. CONTRACTOR	WALL MOUNTED HINGED SERVER CABINET
35	EXHAUST CANOPY	CSS	SHARPLINE CANOPY OR INVENT CANOPY TO SUIT OVEN SHOWN. REFER TO THE FLOOR PLAN ATTACHED.	73	SIDES STATION	CSS	STAINLESS STEEL SIDES STATION AS PER THE DRAWINGS SUPPLIED BY CSS.
36	PIZZA OVENS	CSS	SELECTED OVEN AS SHOWN ON THE FLOOR PLAN	74	DISABLED COMPLAINT	CSS	CONSTRUCTED AS PER THE STANDARD DRAWINGS
37	MAKELINE	CSS	REFRIGERATED MAKELINE MANUFACTURED BY KOLDTECH	75	BUG ZAPPER	CSS	SELECTED INSECT ZAPPER WALL MOUNTED.
38	DRINKS FRIDGE	COCA COLA AMATIL	UPRIGHT DRINKS FRIDGE AS PER THE FLOOR PLAN ATTACHED. CONFIRM DETAILS BEFORE CONSTRUCTION.	76	EDB	SHOPFITTER	ELECTRICAL DISTRIBUTION BOARD

**DISCLAIMER**  
 ALL DIMENSIONS MUST BE CHECKED ON SITE BEFORE COMMENCEMENT OF CONSTRUCTION OR MANUFACTURING OF ANY ITEM OR EQUIPMENT. DO NOT SCALE DRAWING. USE DIMENSIONS INDICATED. THESE DESIGNS & DRAWINGS ARE © COPYRIGHT & ARE THE PROPERTY OF JASON WRIGHT & MUST NOT BE USED, REPRODUCED OR COPIED WHOLLY OR IN PART WITHOUT PERMISSION.

REV	DESCRIPTION	DATE
A	PRELIMINARY PLAN	30.5.2018

Address:

**YANCHEP WA**

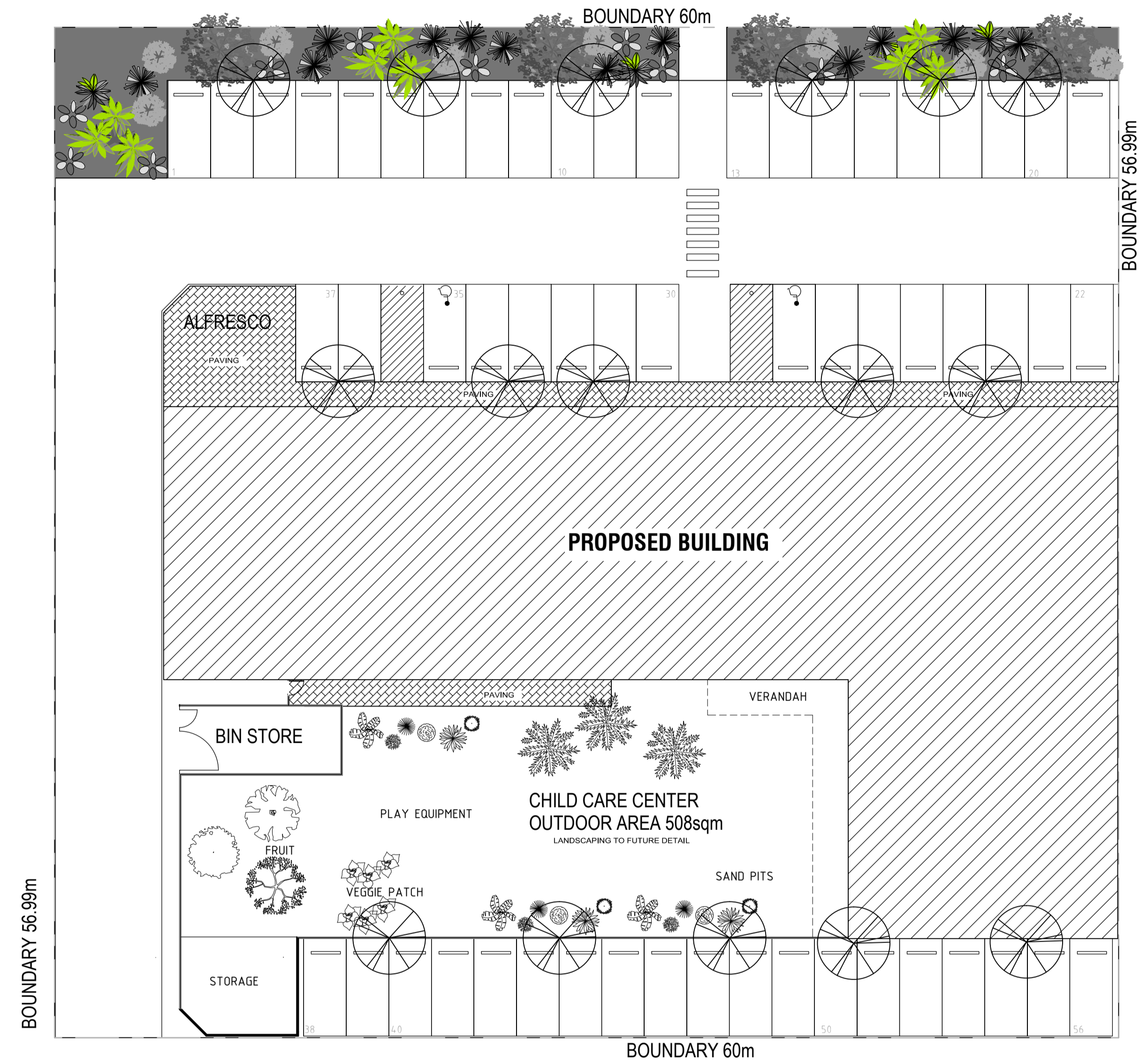
Client:

**DOMINO'S PIZZA**

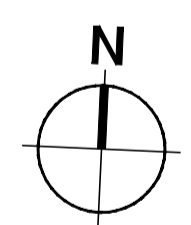
FLOOR PLAN

PRELIMINARY PLAN	DWG No.	REV.
Date: 30.5.2018	<b>A105</b>	<b>A</b>
SCALE AS SHOWN ON A2		

No	DATE	ISSUE / REVISION
A	12.03.18	ISSUE FOR DEVELOPMENT APPROVAL
B	17.05.18	REVISED DEVELOPMENT APPLICATION
C	01.06.18	REVISED DEVELOPMENT APPLICATION



- LANDSCAPE LEGEND:**
- GROUND COVER**
- Eremophila Glabra Kalbarri Carpet (8 off)
- SHRUBS**
- Yucca filamentosa 'Color Guard' (3 off)
  - Cordyline 'Red Fountain' (4 off)
  - Ficinia nodosa - Knotted Rush (8 off)
  - Kalanchoe thyrsiflora (10 off)
- TREES**
- Asparagus Yucca Elephantipes (3 off)
  - Prunus cerasifera 'flowering plum' (4 off)
  - CORYMBIA CALOPHYLLA 'MARRI' TREE (16 off)
- MULCH**
- Deplazzi Muja Black Mulch



**LANDSCAPING PLAN**  
SCALE 1:200

**CHILD CARE CENTRE, OUTDOOR PLAY AREA LANDSCAPING LEGEND:**

 SELECTION OF HERBS AND VEGGES MAX GRWTH: VARIOUS QUANTITY: TBC	 DELPHINIUM KING ARTHUR DELPHINIUM x HYBRID MAX GRWTH: 750mm QUANTITY: TBC	 TRIXIE PEAR MINI FRUIT TREE PYRUS COMMUNIS MAX GRWTH: 15m QUANTITY: TBC
 POLYGAL A DALMAISIANA MAX GRWTH: 500mm QUANTITY: TBC	 VERBENA BEBOP PINK VERBENA x HYBRID MAX GRWTH: 700-1000mm QUANTITY: TBC	 DWARF APRICOT TREVATT PRUNUS ARmeniACA MAX GRWTH: 15m QUANTITY: TBC
 HOSTA FIRE ISLAND HOSTA HYBRID MAX GRWTH: 500-600mm QUANTITY: TBC	 LAVENDER MISS KATHERINE LAVANDULA ANGUSTIFOLIA MAX GRWTH: 400-600mm QUANTITY: TBC	 LABURNUM VOSSII LABURNUM x WATERERI MAX GRWTH: 2m QUANTITY: TBC
 BOSTON FERN NEPHROLEPIS EXALATA MAX GRWTH: 900mm QUANTITY: TBC	 DWARF EMPEROR MANDARIN CITRUS x RETICULATA MAX GRWTH: 15m QUANTITY: TBC	

ALL LANDSCAPED AREAS MUST BE RETICULATED, WITH WATERING SCHEDULED ON THE ALLOCATED WATERING DAY.  
 AS PER MSA CONDITIONS, ANY PLANTS THAT DIE WITHIN THE FIRST 5 YEARS FROM DATE OF COMPLETION, MUST BE REMOVED AND REPLACED.  
 PAVING SELECTION TO BE MIDLAND BRICK 'STYLESTONE ROCKPAVE' COLOUR TO BE CONFIRMED.

**NOT FOR CONSTRUCTION**

**ISSUE FOR DEVELOPMENT APPROVAL**

**OFF2SITE PROJECTS**

OFF2SITE PROJECTS PTY LTD  
 PHONE: 0412 281 407  
 EMAIL: off2site@inet.net.au

CLIENT: **CARDIFF CAPITAL PTY LTD**

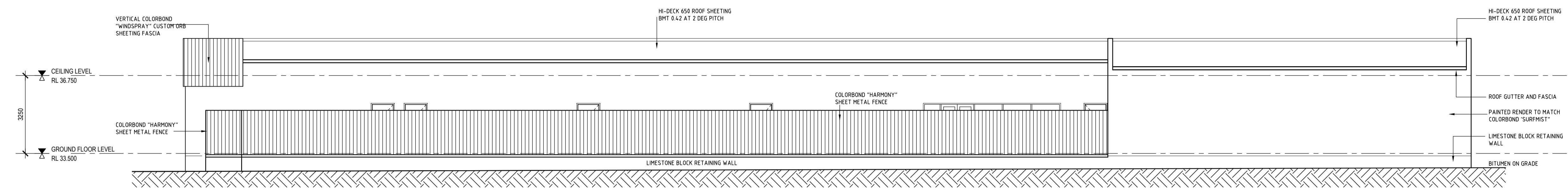
PROJECT: **COMMERCIAL DEVELOPMENT**  
**LOT 2 YANCHEP BEACH ROAD, YANCHEP**

DRAWING: **LANDSCAPE PLAN**

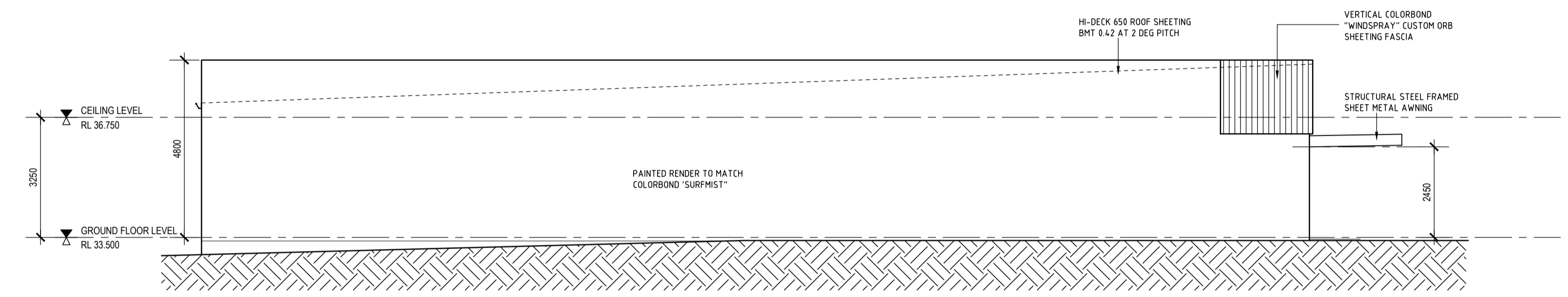
PROJECT DATE	SEPTEMBER 2017	DWG No	17028	REV	
PROJECT No	17028		<b>DA102</b>	<b>C</b>	
SCALE	1:200 @ A1				

DO NOT SCALE - IF IN DOUBT, ASK. ALL DIMENSIONS IN MILLIMETERS.  
 VERIFY ALL SETPOINTS ON SITE BEFORE COMMENCING ANY WORKS.  
 IT IS AN OBLIGATION OF COPYRIGHT IN THIS DRAWING AND DESIGN TO COPY OR COMMUNICATE ITS CONTENTS TO ANY THIRD PARTY WITHOUT WRITTEN CONSENT OF OFF2SITE PROJECTS.

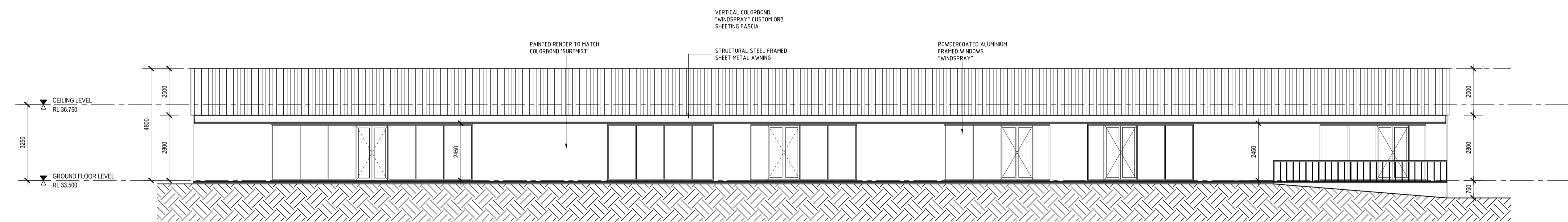
No	DATE	ISSUE / REVISION
A	12.03.18	ISSUE FOR DEVELOPMENT APPROVAL
B	17.05.18	REVISED DEVELOPMENT APPLICATION



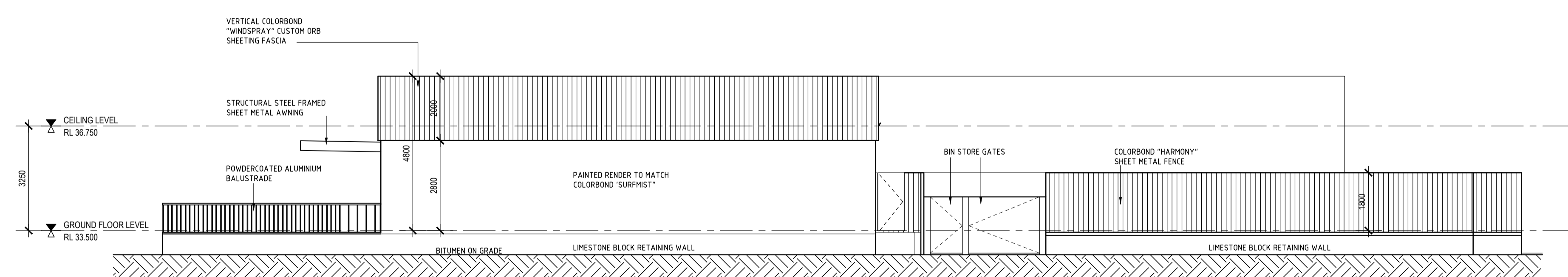
**E1 SOUTH (ROW) ELEVATION**  
DA110 SCALE 1:100



**E2 EAST ELEVATION**  
DA110 SCALE 1:100



**E3 NORTH (STREET) ELEVATION**  
DA110 SCALE 1:100



**E4 WEST ELEVATION**  
DA110 SCALE 1:100

**NOT FOR CONSTRUCTION**  
**ISSUE FOR DEVELOPMENT APPROVAL**

**OFF2SITE PROJECTS**

OFF2SITE PROJECTS PTY LTD  
PHONE: 0412 281 407  
EMAIL: off2site@inet.net.au

CLIENT: **CARDIFF CAPITAL PTY LTD**

PROJECT: **COMMERCIAL DEVELOPMENT**  
**LOT 2 YANCHEP BEACH ROAD, YANCHEP**

DRAWING: **ELEVATIONS**

PROJECT DATE	SEPTEMBER 2017	DWG No	REV
PROJECT No	17028	<b>DA120</b>	<b>B</b>
SCALE	1:100 @ A1		

DO NOT SCALE - IF IN DOUBT, ASK. ALL DIMENSIONS IN MILLIMETERS.  
VERIFY ALL SETOUTS ON SITE BEFORE COMMENCING ANY WORKS.  
IT IS AN INFINGEMENT OF COPYRIGHT IN THIS DRAWING AND DESIGN TO COPY OR COMMUNICATE ITS CONTENTS TO ANY THIRD PARTY WITHOUT WRITTEN CONSENT OF OFF2SITE PROJECTS.