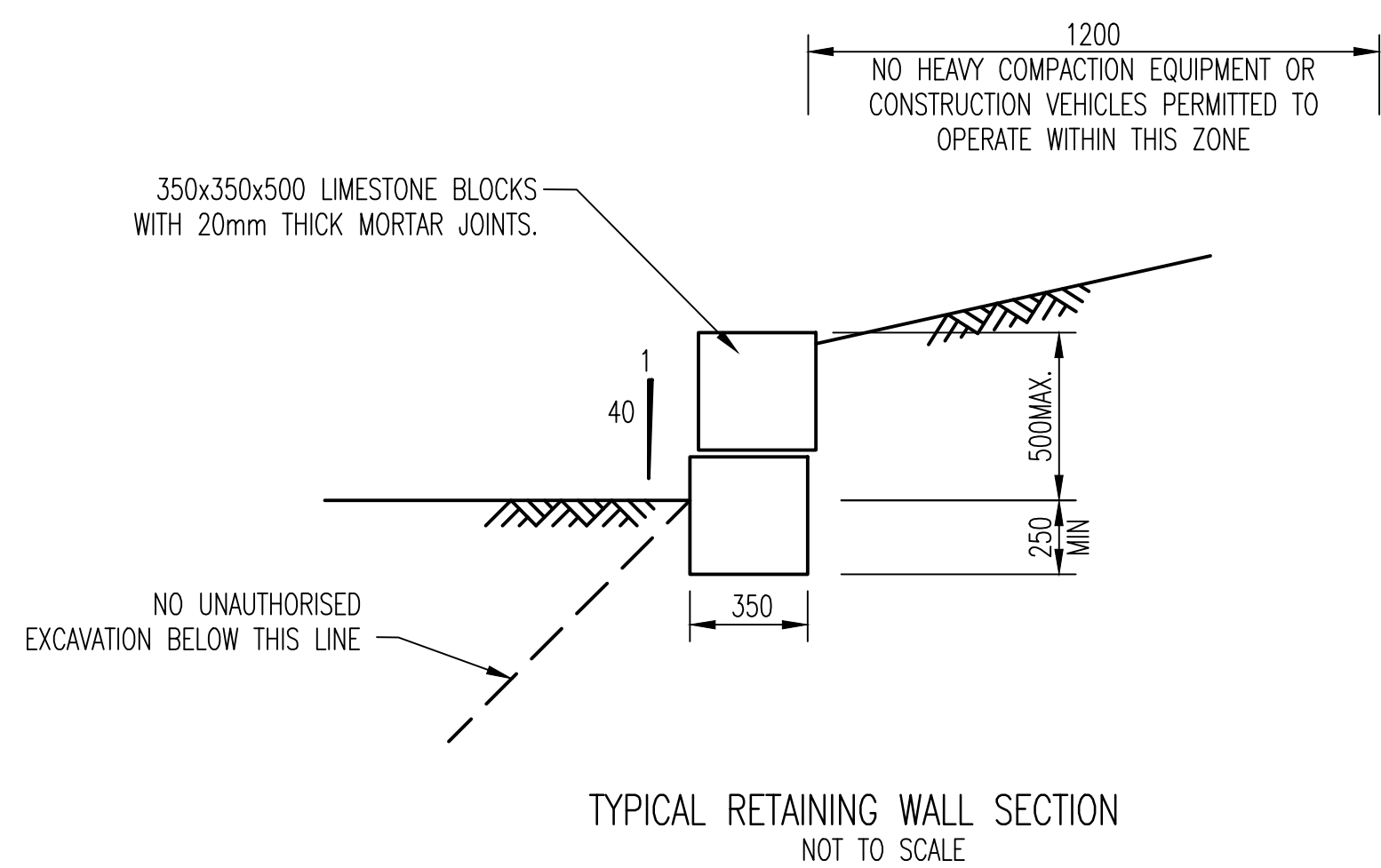
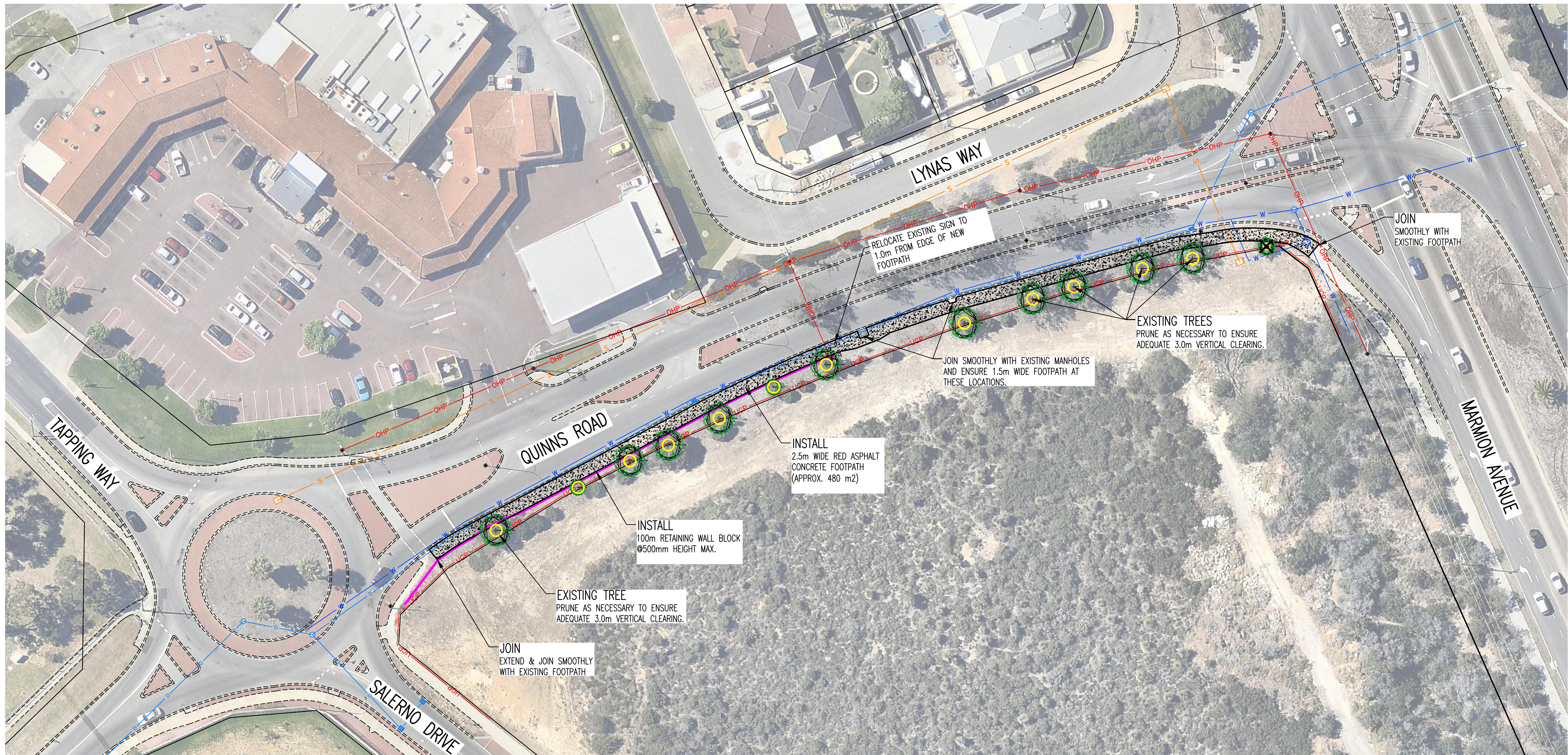




3493-1-0



EXISTING	LEGEND	PROPOSED
	KERBING (SEMI-MOUNTABLE)	
	FOOTPATH (RED ASPHALT)	
	KERB RAMP	
	BLOCK RETAINING WALL (500mm MAX. HEIGHT)	
	TREE TO BE REMOVED	
	TREE / SHRUB	
	GAS	
	SEWER	
	DRAIN	
	TELSTRA	
	TELSTRA OPTICAL CABLES	
	WATER	
	UNDERGROUND POWER	
	OVERHEAD POWER	

#### NOTES:

- CADASTRAL INFORMATION APPROXIMATE ONLY.
- SERVICE LOCATIONS DIAGRAMMATIC ONLY. CONTACT SERVICE AUTHORITIES FOR EXACT IN GROUND LOCATIONS.
- KERBING TO BE CONSTRUCTED IN ACCORDANCE WITH CITY OF WANNEROO DRG. No TS 05-1 AND TS 05-3.
- ALL DISTURBANCES TO EXISTING VERGE RETICULATION AND TURFING TO BE REINSTATED.
- FOR TREE ASSESSMENT REFER TO TRIM No. 8870v04, 16/69751 & 16/69756.



**CITY OF WANNEROO**  
**ASSETS**

**QUINNS ROAD**  
FROM MARMION AVENUE TO SALERNO DRIVE  
CONSTRUCTION SHARED PATH, SOUTH SIDE OF QUINNS ROAD  
QUINNS ROCKS

CONSTRUCTION PLAN  
SHEET 1 OF 1

DRAWING No. SHEET REVISION ORIGINAL DRG. SIZE  
**3493-1-0** **A1**

No.	REVISION	BY	DATE	AUTH	No.	REVISION	BY	DATE	AUTH	SCALE:	DATE:	DESIGNED:	CHECKED:	APPROVED:	FINANCE CODE	PWO No.
A	DRAFT COPY	DN	11/2015							1:500		NEARMAP			PR-2749	18095
G	ISSUED FOR CONSTRUCTION	DN	6/2018							LOCAL	MCA 50	D. NGUYEN				31833