



# Appendix 3 Development Plans

# ARCHITECTURAL DRAWINGS

DRAWING	DESCRIPTION	REV	DRAWING	DESCRIPTION	REV	DRAWING	DESCRIPTION	REV	DRAWING	DESCRIPTION	REV
	<b>GENERAL</b>			<b>BUILDING</b>			<b>SIGNAGE</b>				
A000	DRAWING LIST	F	A210	PROPOSED FLOOR PLAN	E	S100	SITE PLAN SIGNAGE	C			
A001	SCHEDULE EXTERIOR FINISHES	A	A216	ELEVATIONS-SHEET 1 OF 2	E	S110	SIGNAGE DETAILS SHEET 1	A			
A002	SCHEDULE INTERIOR FINISHES 1 OF 2	A	A217	ELEVATIONS-SHEET 2 OF 2	E						
A003	SCHEDULE INTERIOR FINISHES 2 OF 2	A				S111	SIGNAGE DETAILS SHEET 2	A			
				<b>CANOPY</b>							
	<b>SITE</b>		A303	ELEVATIONS-SHEET 1 OF 2	A						
A100	PROPOSED SITE PLAN	D	A304	ELEVATIONS-SHEET 2 OF 2	A						
A107	TANKER PATH	D									
L100	LANDSCAPING PLAN	E									

PROJECT  
CONSULTANTS WA  
P T Y L T D  
ACN 602 924 336 ABN 40 415 457 574  
CONTACT No 0430 466 223

 <b>CALTEX</b> Caltex Australia Petroleum Pty Ltd <small>COPYRIGHT THIS DRAWING &amp; DESIGN MUST NOT BE COPIED IN WHOLE OR PART WITHOUT THE WRITTEN CONSENT OF CALTEX AUSTRALIA PETROLEUM PTY LTD.</small>	REV.	BY	DATE	DESCRIPTION OF CHANGE	PROJECT <b>ALKIMOS - WA</b> MARMION AVENUE CNR SANDERLING STREET	TITLE DRAWING LIST : ARCHITECTURAL	SCALE	DEVELOPMENT	
	D	JS	12.09.18	REVISIONS AMENDED			NTS	APPROVED	DATE
	E	JS	03.10.18	REVISIONS AMENDED			A3	DRAWING No.	REV.
	F	JS	17.12.18	CANOPY ELEVATIONS ADDED				P1565-A000	F
REVISION									

## EXTERIOR FINISHES SCHEDULE

NO	DESCRIPTION	LOCATION	MANUFACTURER	CODE	COLOUR	NOTES
<b>TIMBER LOOK CLADDING</b>						
DW1	Decowood Aluminium Column	Front of Building	Decorative Imaging	Decowood Aluminium	Natural American Oak	150x150mm Aluminium extrusion with base bracket and colour matching end caps
DW2	Decowood Aluminium Cladding	Awning Fascia	Decorative Imaging	Decowood Aluminium	Natural American Oak	Cladding to fascia
DW3	Decowood Aluminium Battens	Fascia	Decorative Imaging	Decobatten	Natural American Oak	50x50mm with matching end caps
DW4	<i>Superseded by PA2</i>					
<b>ALUMINIUM COMPOSITE CLADDING</b>						
AB1	<i>Superseded</i>					
AB2	ACM	Signage / Fascia	Signage Contractor	326 Black	Black	
AB3	<i>Superseded</i>					
<b>POWDERCOATING</b>						
PC1	Black Powdercoat	Window Framing	Dulux	Duralloy - 19268	Black Satin	
<b>TILE</b>						
BR1	External Brick Facing Tile	Wall	Robertson's Building Products		Rustic Red & Rustic Apricot	50/50 Blend
T10	Mosaic Tiles	Wall	Royal Tiles - equivalent	Matt Mosaic	White	45 x 75mm. Laid horizontally. Grout - Laticrete #88 Silver Shadow
<b>MISCELLANEOUS</b>						
AW1	Drop Awning	Between Front of Building Columns	Luxaflex	Alpha Straight Drop Awning	Black & White Stripes	Dickson C022 Black/White
PA1	<i>Superseded by PT8</i>					
PA2	Steel Sheet Cladding	Soffit Lining	Bluescope Lysaght	Easyclad 2PF 300	Colourbond Paperbark Satin	
PT1	Sealed Concrete Wall	Front Concrete Wall - Below DW3 Fascia	Aftek	Fairing Coat Mortar	Natural	
PT2	Paint	Rear Wall & Concrete Wall - Below DW3 Fascia	Dulux		Black Acrylic	Exterior grade - Low Sheen, Low VOC
PT8	Paint	Front & Return Corner Concrete Walls	Dulux		Black	Low Sheen Weathershield with Anti-graffiti clear
PT9	Paint	Side Concrete Wall	Dulux	SN4G3	Endless Dusk	Low Sheen Weathershield. If panels require painting
PT10	Sheet Wall Cladding	Retrofit Building - Front & Return Corner	James Hardie	Scyon Axon 400mm - 404419	PT8 Top coat paint	Pre-primed exterior cladding. Elevation not to exceed 3m height. Sheet Size 3000x1200mm

PROJECT  
CONSULTANTS WA  
P T Y L T D  
ACN 602 924 336 ABN 40 415 457 574  
CONTACT No. 0430 466 223



### NOTE:

THIS IS TO BE READ IN CONJUNCTION WITH SITE SPECIFIC LAYOUT AND SHOP BUILDING DRAWINGS.

 <b>CALTEX</b> Caltex Australia Petroleum Pty Ltd <small>COPYRIGHT THIS DRAWING &amp; DESIGN MUST NOT BE COPIED IN WHOLE OR PART WITHOUT THE WRITTEN CONSENT OF CALTEX AUSTRALIA PETROLEUM PTY LTD.</small>	REV.	BY	DATE	DESCRIPTION OF CHANGE	PROJECT <b>ALKIMOS - WA</b> MARMION AVENUE CNR SANDERLING STREET	TITLE SCHEDULE: EXTERIOR FINISHES	SCALE	DEVELOPMENT	
	A	TD	10.07.18	DEVELOPMENT APPLICATION			NTS	APPROVED	DATE
								SIZE	DRAWING No.
REVISION							A3	P1565-A001	A

## INTERIOR FINISHES SCHEDULE

NO	DESCRIPTION	LOCATION	MANUFACTURER	CODE	COLOUR	NOTES
<b>CERAMIC TILES</b>						
T01	Floor Tiles	Sales Area &/or Airlock Areas	Royal Tiles	RT102-Cement SG160-CEMGR	Cement Grey	300 x 600mm Rectified. Grout-Laticrete #45 Raven. Main sales floor Sales Area Skirting - 50x50 Natural anodised aluminium quarter round coving.
T02	Floor Tiles	Sales Area	Royal Tiles	RT102-EL Palo SGELPCOG	Timber Look	150 x 900mm. Grout-Laticrete #56 Desert Khaki. Entry, coffee & seating areas
T03	Floor Tiles	Toilet Areas	Royal Tiles	RT222-Grespor Salema	Dark Grey Matt	200 x 200mm. Grout-Epoxy Laticrete Black
T04	Floor Tiles	Prep Areas	Royal Tiles	RT102-Cementa SG160-Cemsmotex	Cementa Smoke Textured	300 x 600mm. Grout-Epoxy Laticrete #45 Raven.
T05	Skirting tiles	Prep Areas	Royal Tiles	RT-KEO Grey 20	Grey	200 x 200mm with 25mm coved radius tile. Grout-Epoxy Laticrete #45 Raven
T06	Wall tiles	Sales Area	Royal Tiles	SG-DMD-2665	Glossy Grey	65 x 265mm. Grout-Laticrete #88 Silver Shadow
T07	Wall tiles	Toilet & Airlock Areas	Royal Tiles	RT3060	White Gloss	300 x 600mm Rectified. Grout-White
T08	Wall tiles	Prep Areas	Royal Tiles	RT3060	White Gloss	300 x 600mm Rectified. Grout-Epoxy Laticrete #45 Raven
T09	Feature Wall tiles	Behind Servery / Point of Sale	Royal Tiles	Special	Black / White	200 x 200mm Diagonal. Grout - Laticrete #45 Raven.
T10	Counter	Face of Counter	Royal Tiles	Matt Mosaic	White	45 x 75mm. Laid horizontally. Grout - Laticrete #88 Silver Shadow
T11	Wall Tiles	Prep Area - Coffee	Royal Tiles	SG-DMD-2665	Glossy Grey	65 x 265mm. Grout-Laticrete #45 Raven. Coffee prep wall
<b>LAMINATES</b>						
L01	Concrete Laminate Panel	Wall &/or P.O.S./Prep Area - Bulkhead & Office Desktop	Halifax Vogel Group	Wilsonart - 8152	Concrete Super Matt	Sheet Size 2400 x 1200mm
L02	Black Laminate Panel	Sales & Office Counter Cupboard Doors, Sides & Shelving	Halifax Vogel Group	Wilsonart - 1595	Black Stipple	Sheet Size 2400 x 1200mm
L03	Silver Grey Laminate	Door	Laminex	324	Silver Grey Laminate	
L04	Timber Laminate	Joinery	Laminex	077	Rural Oak Riven	Laminex Impressions
L05	Dinoc	Sales Area - Pelmet Face	Calgraphics		Metallic Finish	Laminate to be applied to Melamine Board and not to exceed 580mm
L06	<i>Superseded</i>					
L07	Alumasteel Laminate	Joinery trim - Feet & Skirting	Wilsonart	6277	Decorative Metal	
<b>VINYL</b>						
V01	Office Flooring	Caltex Office & Staff Room	Tarkett	3040-383	IQ-Granit (Light Grey mottled)	
V02	Vinyl Skirting	Caltex Office	Tarkett		Black	100mm skirting with Feather Edge
<b>ACRYLIC COMPOSITE</b>						
CT1	Counter	Counter Top	Staron	AG 636	Aspen Glow	
CT2	Counter &/or Joinery	Counter Top &/or Midfloor	Staron	SH 428	Sanded Heron	
<b>TIMBER</b>						
TM1	Solid Timber	Joinery	Shopfitter	Solid Oak		Timber to match tones of TM1 and L04. To be finished using Bona Naturale. Bona contact: 03 9543 4399
TM2	Europlank oak	Counter Front	Havwoods	HW680	Legacy Brown	180mm Width
TM3	<i>Superseded</i>					
<b>POWDERCOATING</b>						
PC1	Black Powdercoat	Joinery / Framing	Dulux	Duralloy - 19268	Black	
<b>MISCELLANEOUS</b>						
SS1	Stainless Steel Wall Lining	Behind All Cook Area			Stainless Steel	Brushed Finish

**PROJECT CONSULTANTS WA**  
 P T Y L T D  
 ACN 602 924 336 ABN 40 415 457 574  
 CONTACT No. 0430 466 223



**NOTE:**  
 THIS IS TO BE READ IN CONJUNCTION WITH SITE SPECIFIC LAYOUT AND SHOP BUILDING DRAWINGS.

 <b>CALTEX</b> Caltex Australia Petroleum Pty Ltd <small>COPYRIGHT                  THIS DRAWING &amp; DESIGN MUST NOT BE COPIED IN WHOLE OR PART WITHOUT THE WRITTEN CONSENT OF CALTEX AUSTRALIA PETROLEUM PTY LTD.</small>	REV.	BY	DATE	DESCRIPTION OF CHANGE	PROJECT <b>ALKIMOS - WA</b> MARMION AVENUE CNR SANDERLING STREET	TITLE SCHEDULE: INTERIOR FINISHES SHEET 1 OF 2	SCALE	DEVELOPMENT	
	A	TD	10.07.18	DEVELOPMENT APPLICATION			NTS	APPROVED	DATE
								SIZE	DRAWING No.
				REVISION			A3	P1565-A002	A

## INTERIOR FINISHES SCHEDULE

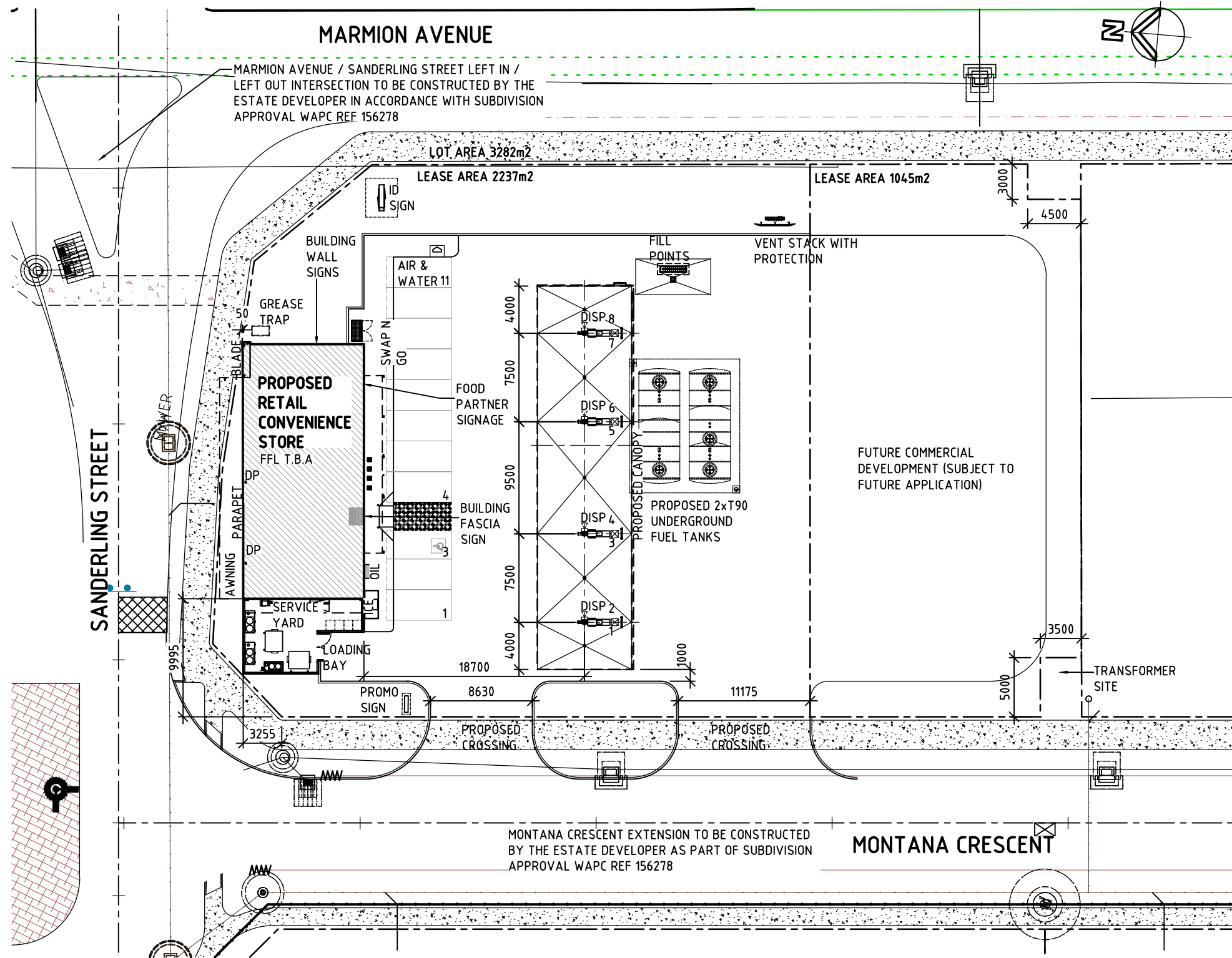
NO	DESCRIPTION	LOCATION	MANUFACTURER	CODE	COLOUR	NOTES
<b>PAINT</b>						
PT3	Paint	Sales Area & Store Room Wall	Dulux	PW1-H9	Vivid white	Wash & Wear - Low Sheen, Low VOC
PT4	Paint	Ceiling	Dulux	PW1-H9	Vivid white	Matt Finish, Low VOC
PT5	Paint	Behind Wall Shelving & Chiller	Dulux	SN3A1	Feather Soft	Wash & Wear - Low Sheen, Low VOC
PT6	Paint	Door	Dulux	Laminex	Silver Grey	Low Sheen
PT7	Paint	Door Frame	Dulux	PW1-H9	Vivid white	Low Sheen
<b>MISCELLANEOUS</b>						
MM1	<i>Superseded</i>					
BR2	<i>Superseded</i>					
F01	Entrance matting	Entry	Birrus Entrance Matting	Ultramat Blackbat	Black	Closed Construction
F02	Sealed Concrete Floor	Store Room, Coolroom & Utilities (if applicable)	Dulux	Luxafloor' Code EC02-PC296	General : Silver Grey. Walkways : Sand (Medium Grit)	Skirting - Store Room : 100mm Black vinyl with featured edge. Skirting - Coolroom : 50x50 Natural anodised aluminium quarter round coving.
F03	Concrete Surface Hardener	Service Yard	Caltex to confirm		Natural	Floor slab cast to falls, 50x50mm Natural anodised aluminium quarter round coving. 'KEEP CLEAR' text in front of MSB

**P R O J E C T  
CONSULTANTS WA**  
P T Y L T D  
ACN 602 924 336 ABN 40 415 457 574  
CONTACT No 0430 466 223

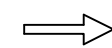



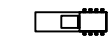





**NOTE:**  
THIS IS TO BE READ IN CONJUNCTION  
WITH SITE SPECIFIC LAYOUT AND  
SHOP BUILDING DRAWINGS.

 <b>CALTEX</b> Caltex Australia Petroleum Pty Ltd <small>COPYRIGHT THIS DRAWING &amp; DESIGN MUST NOT BE COPIED IN WHOLE OR PART WITHOUT THE WRITTEN CONSENT OF CALTEX AUSTRALIA PETROLEUM PTY LTD.</small>	REV.	BY	DATE	DESCRIPTION OF CHANGE	PROJECT <b>ALKIMOS - WA</b> MARMION AVENUE CNR SANDERLING STREET	TITLE SCHEDULE: INTERIOR FINISHES SHEET 2 OF 2	SCALE	<b>DEVELOPMENT</b>	
	A	TD	10.07.18	DEVELOPMENT APPLICATION			NTS	APPROVED	DATE
								SIZE	DRAWING No.
				REVISION			A3	P1565-A003	A



**LEGEND**

-  NEW YELLOW PAINTED DIRECTIONAL ARROW.
-  WHITE 'SYMBOL OF ACCESS' 900 HIGH ON BLUE RECTANGLE 1200 SQ. TO COMPLY WITH AS1428.1
-  100mm WIDE YELLOW PAINTED CAR PARK LINE.
-  SINGLE FLOOD LIGHT COMPLETE WITH FOOTING & CONNECTION TO EXTERNAL LIGHTING CIRCUIT.
-  FUEL DISPENSER.
-  SITE SETOUT POINT.
-  EXTENT OF LANDSCAPING
-  CONCRETE KERB

**NOTES : CONSTRUCTION**

- C.01 FOR BUILDING DIMENSIONS REFER TO FLOOR PLAN.
- C.02 ALL SIGNAGE SHOWN IS INTERNALLY ILLUMINATED UNO.
- C.03 CONFIRM EXACT SITE DIMENSIONS PRIOR TO COMMENCING CONSTRUCTION.
- C.04 MERGE ALL CURVED SECTIONS OF ROAD INTO STRAIGHT SECTIONS.
- C.05 KERB RAMPS SHOWN TO BE AT A MAXIMUM GRADIENT OF 1 IN 8 AND SHALL FULLY COMPLY WITH THE REQUIREMENTS OF A 'KERB RAMP' AS DEFINED IN AS1428.

**PROJECT CONSULTANTS WA**

P T Y L T D  
 ACN 602 924 336 ABN 40 415 457 574  
 CONTACT No 0430 466 223

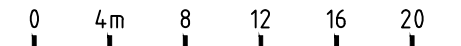


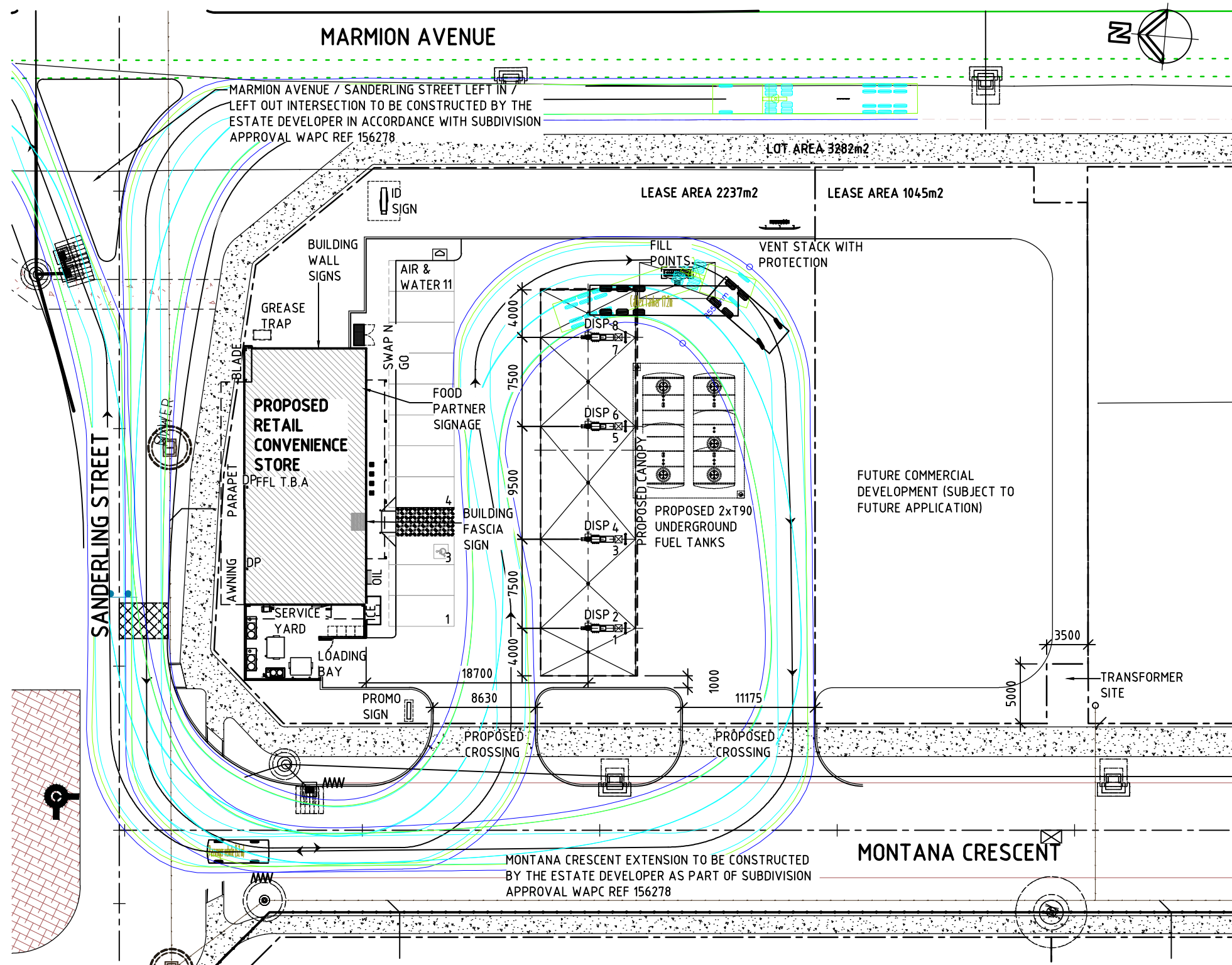
COPYRIGHT  
 THIS DRAWING & DESIGN MUST NOT BE COPIED IN WHOLE OR PART WITHOUT THE WRITTEN CONSENT OF CALTEX AUSTRALIA PETROLEUM PTY LTD.

REV.	BY	DATE	DESCRIPTION OF CHANGE
B	JS	14.08.18	BUILDING REVISED, ROLL OVER KERB REMOVED
C	JS	12.09.18	BOUNDARY REVISED
D	JS	03.10.18	DEVELOPER SITE REVISED BUILDING PARAPET / POSTION REVISED
REVISION			

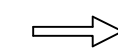







PROJECT	ALKIMOS - WA MARMION AVENUE CNR SANDERLING STREET
TITLE	SITE; PLAN PROPOSED

SCALE	1:400	
SIZE	DEVELOPMENT	
	APPROVED	DATE
DRAWING No.	P1565-A100	
	REV.	D





**LEGEND**

-  NEW YELLOW PAINTED DIRECTIONAL ARROW.
-  WHITE 'SYMBOL OF ACCESS' 900 HIGH ON BLUE RECTANGLE 1200 SQ. TO COMPLY WITH AS1428.1
-  100mm WIDE YELLOW PAINTED CAR PARK LINE.
-  SINGLE FLOOD LIGHT COMPLETE WITH FOOTING & CONNECTION TO EXTERNAL LIGHTING CIRCUIT.
-  FUEL DISPENSER.
-  SITE SETOUT POINT.
-  EXTENT OF LANDSCAPING
-  CONCRETE KERB

**NOTES : CONSTRUCTION**

- C.01 FOR BUILDING DIMENSIONS REFER TO FLOOR PLAN.
- C.02 ALL SIGNAGE SHOWN IS INTERNALLY ILLUMINATED UNO.
- C.03 CONFIRM EXACT SITE DIMENSIONS PRIOR TO COMMENCING CONSTRUCTION.
- C.04 MERGE ALL CURVED SECTIONS OF ROAD INTO STRAIGHT SECTIONS.
- C.05 KERB RAMPS SHOWN TO BE AT A MAXIMUM GRADIENT OF 1 IN 8 AND SHALL FULLY COMPLY WITH THE REQUIREMENTS OF A 'KERB RAMP' AS DEFINED IN AS1428.

**P R O J E C T  
CONSULTANTS WA**

P T Y L T D  
ACN 602 924 336 ABN 40 415 457 574  
CONTACT No 0430 466 223



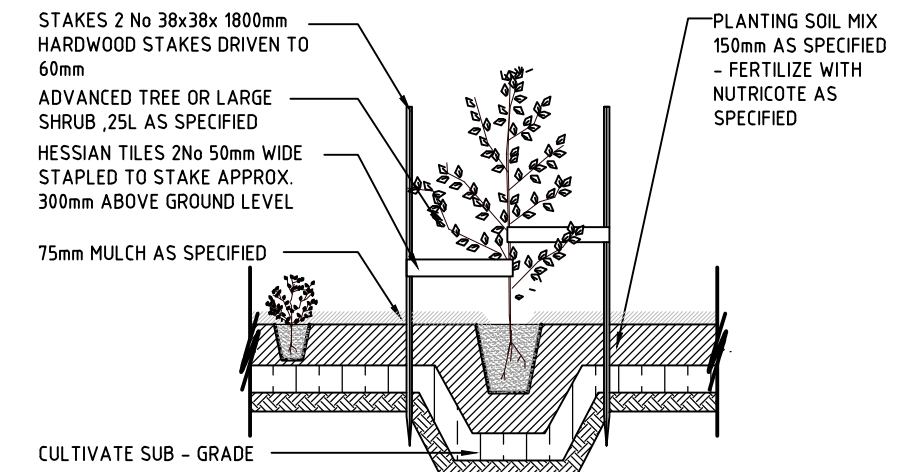
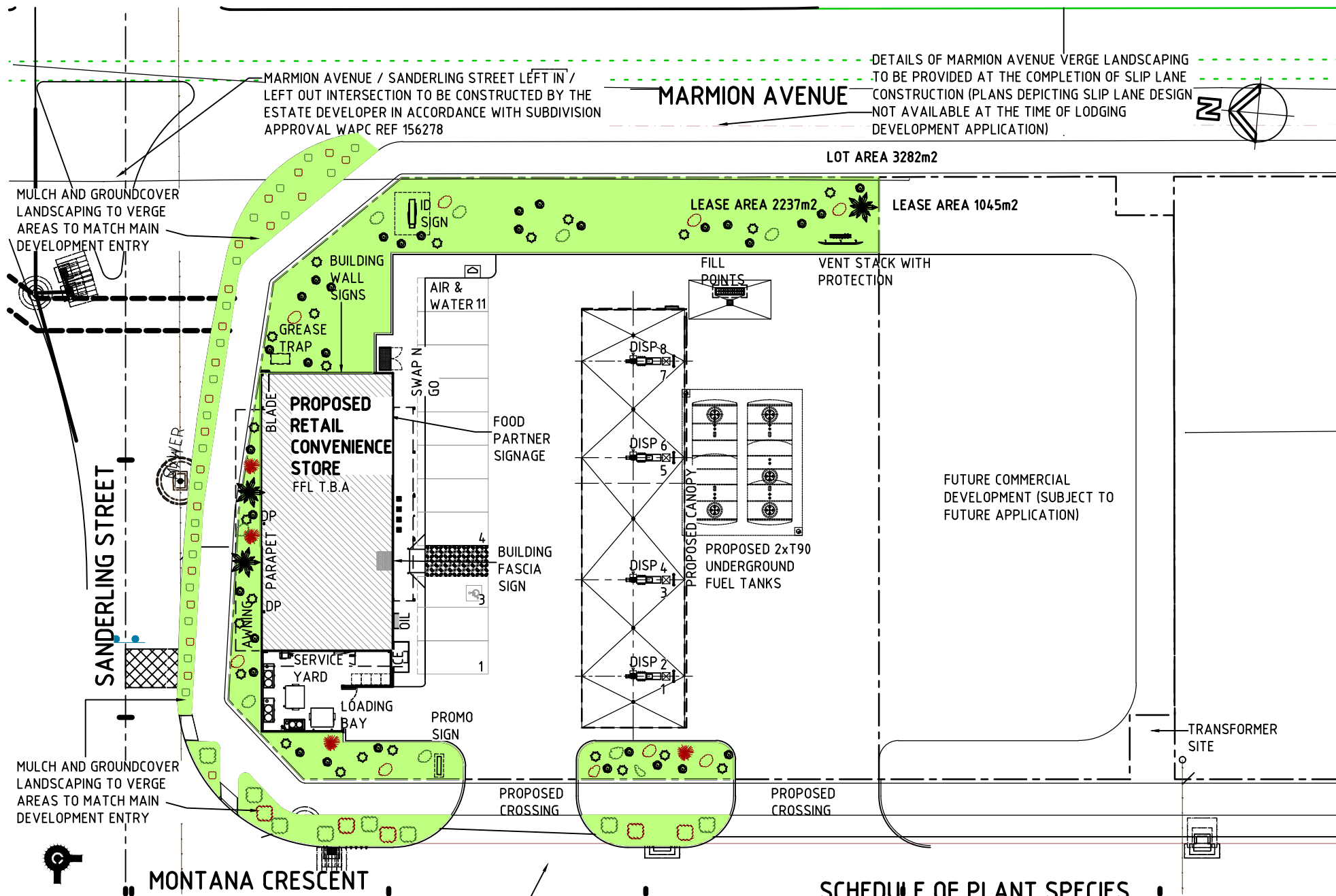
COPYRIGHT  
THIS DRAWING & DESIGN MUST NOT BE COPIED IN WHOLE OR PART WITHOUT THE WRITTEN CONSENT OF CALTEX AUSTRALIA PETROLEUM PTY LTD.

REV.	BY	DATE	DESCRIPTION OF CHANGE
B	JS	14.08.18	BUILDING REVISED, ROLL OVER KERB REMOVED
C	JS	12.09.18	BOUNDARY REVISED
D	JS	03.10.18	DEVELOPER SITE REVISED BUILDING PARAPET / POSTION REVISED
REVISION			

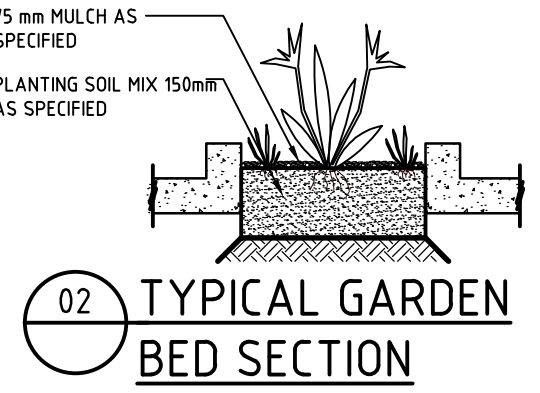
PROJECT	ALKIMOS - WA MARMION AVENUE CNR SANDERLING STREET
TITLE	SITE; PLAN TANKER SWEEP PATH SERVICE VEHICLE SWEEP PATH

SCALE	1:400	
SIZE	<b>DEVELOPMENT</b>	
	APPROVED	DATE
DRAWING No.	P1565-A107	
	REV.	D





01 PLANTING DETAIL  
NTS



02 TYPICAL GARDEN BED SECTION  
NTS

- PROVIDE FULLY AUTOMATIC IRRIGATION SYSTEM TO ALL BEDS AS DETAILED.
- PROVIDE BACKFLOW PREVENTION DEVICE BETWEEN IRRIGATION SYSTEM AND SITE RETICULATION.
- PROVIDE 200MM DRIP LINE WHERE SHOWN.
- EXTEND ELECTRICAL SERVICES AS REQUIRED TO CONTROL BOX.
- PROVIDE MULCH TO ALL LANDSCAPING AREAS.

SCHEDULE OF PLANT SPECIES

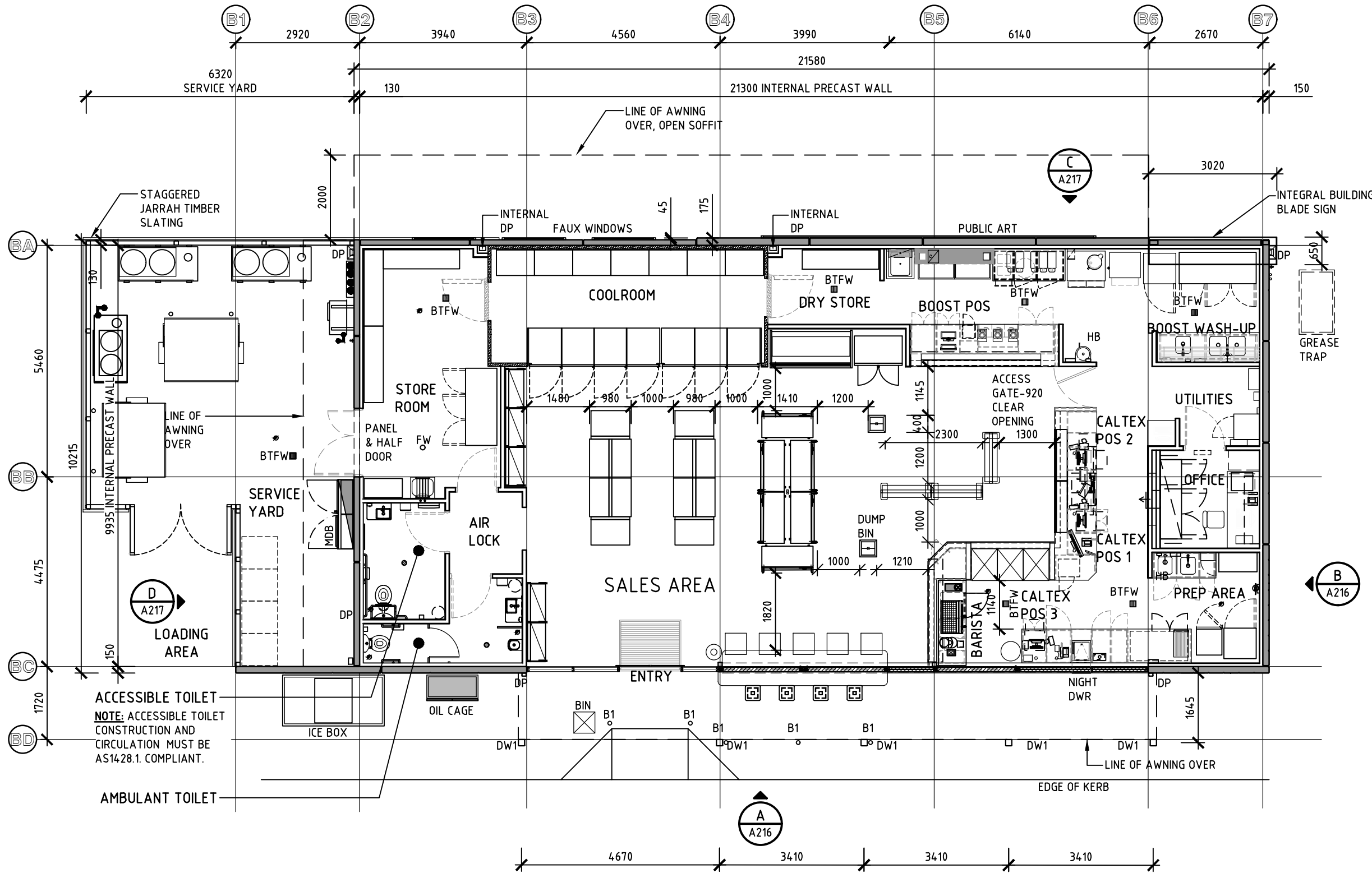
ICON	PLANT NAME	COMMON NAME	MATURE SIZE		POT SIZE	No. OFF
			HEIGHT	WIDTH		
	Melaleuca hugelii 'Rambler'	Honey Myrtle	2m	2m	250l	3
	Calothamnus quadrifidus	One sided Bottle-brush (Dwarf)	1m	1.5m	250l	4
	Oleria axillaris	Coastal Daisybush	1m	0.5m	150 ml	32
	Conostylis candicans	-	0.4m	0.5m	150 ml	23
	Grevillea obtusifolia	Gin Gin Gem	0.5m	3m	150 ml	34
	Hemiandra pungens	snake Bush	1m	0.75w	150 ml	36

PROJECT CONSULTANTS WA  
P T Y L T D  
ACN 602 924 336 ABN 40 415 457 574  
CONTACT No 0430 466 223

 Caltex Australia Petroleum Pty Ltd <small>COPYRIGHT THIS DRAWING &amp; DESIGN MUST NOT BE COPIED IN WHOLE OR PART WITHOUT THE WRITTEN CONSENT OF CALTEX AUSTRALIA PETROLEUM PTY LTD.</small>	REV.	BY	DATE	DESCRIPTION OF CHANGE	PROJECT <b>ALKIMOS - WA</b> MARMION AVENUE CNR SANDERLING STREET	TITLE SITE; PLAN LANDSCAPING	SCALE	DEVELOPMENT	
	C	JS	03.10.18	DEVELOPER SITE REVISED BUILDING POSITION REVISED			1:400	APPROVED	DATE
	D	JS	13.12.18	VERGE LANDSCAPING ADDED			A3	DRAWING No.	REV.
E	JS	17.12.18	PLANTS ADDED TO VERGE	REVISION				P1565-L100	E

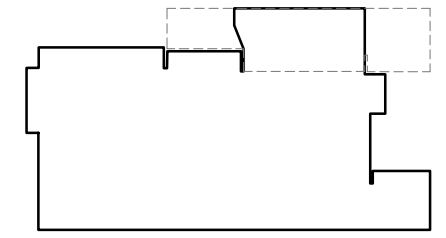






- WALL LEGEND**
- CONCRETE PANEL WALLS PLUS 76mm METAL STUD FRAME AND 10mm GYPROCK LINING.
  - INTERNAL METAL STUD FRAMED WALL WITH 10mm GYPROCK LINING ON ALL EXPOSED SURFACES
  - COOLROOM & FREEZER PANNELLING, REFER TO REFRIGERATION DRAWINGS.
  - GLAZED SHOPFRONT

- LEGEND**
- B1 BOLLARD
  - BTFW BUCKET TRAP FLOOR WASTE
  - DW1 150x150mm ALUMINIUM NON-STRUCTURAL COLUMN WITH BOLLARD INSET
  - DP DOWNPIPE



TOTAL SALES ROOM AREA : 136m<sup>2</sup>  
 BUILDING G.F.A. : 220m<sup>2</sup>  
 (EXCLUDES SERVICE & PLANT YARDS)  
 BOOST JUICE AREA (DASHED): 29m<sup>2</sup>

**PROJECT CONSULTANTS WA**  
 P T Y L T D  
 ACN 602 924 336 ABN 40 415 457 574  
 CONTACT No 0430 466 223

**CALTEX**  
 Caltex Australia Petroleum Pty Ltd  
COPYRIGHT THIS DRAWING & DESIGN MUST NOT BE COPIED IN WHOLE OR PART WITHOUT THE WRITTEN CONSENT OF CALTEX AUSTRALIA PETROLEUM PTY LTD.

REV.	BY	DATE	DESCRIPTION OF CHANGE
C	JS	07.09.18	PARAPET WALL EXTENDED, AWNING STRAIGHTENED, TIMBER ADDED TO FENCE
D	JS	12.09.18	SERVICE YARD REDUCED
E	JS	03.10.18	PARAPET WALL REVISED BLADE ADDED
REVISION			

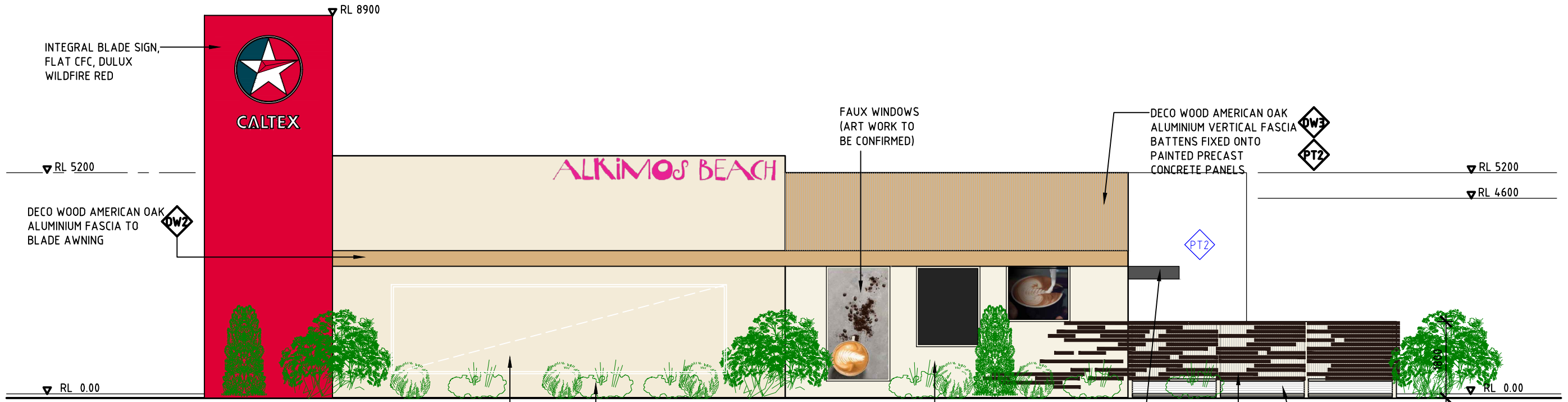
PROJECT  
**ALKIMOS - WA**  
 MARMION AVENUE  
 CNR SANDERLING STREET

TITLE  
 SHOP; FLOOR PLAN  
 PROPOSED

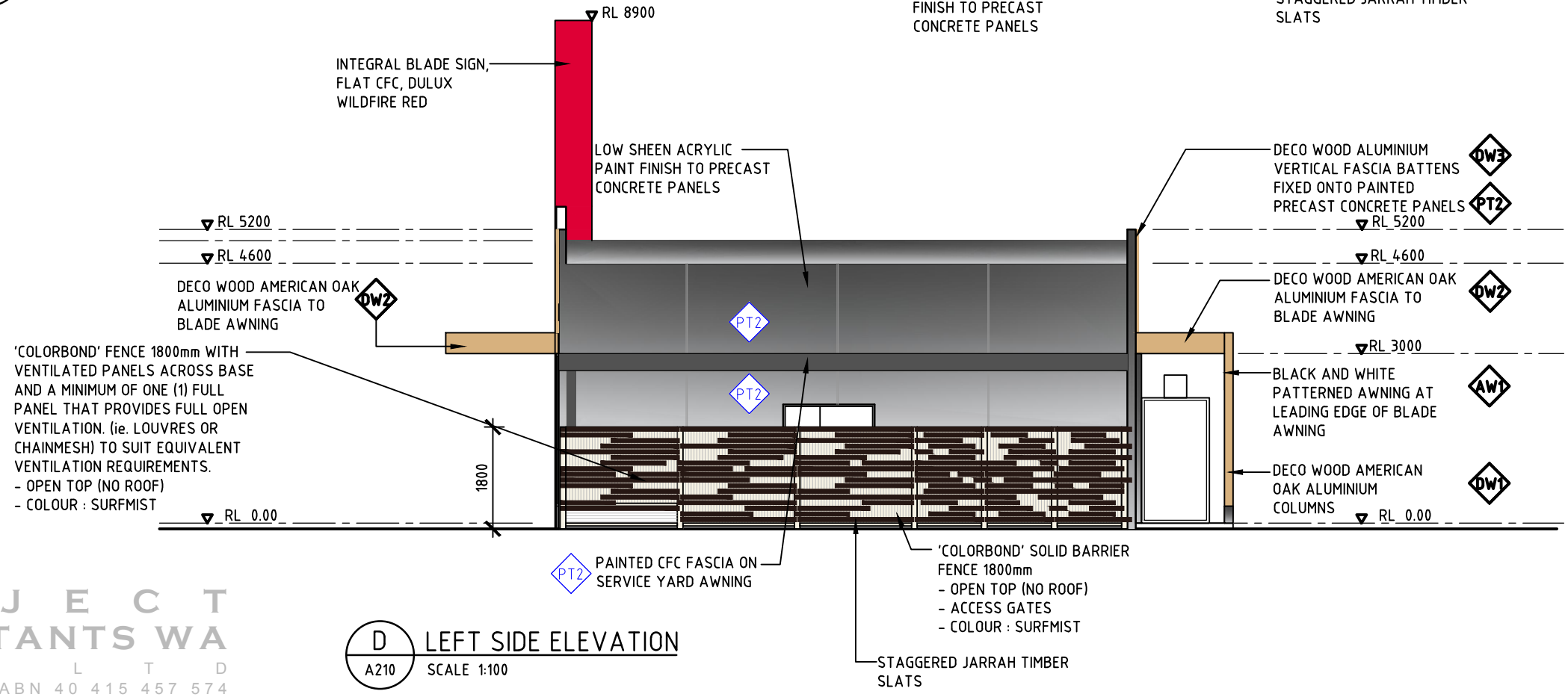
SCALE	DEVELOPMENT	
1:100	APPROVED	DATE 16.09.15
SIZE A3	DRAWING No. P1565-A210	REV. E







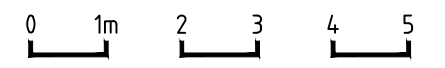
**C REAR ELEVATION**  
A210 SCALE 1:100



**D LEFT SIDE ELEVATION**  
A210 SCALE 1:100

**KEY:**  
 FINISHES REFERENCE SYMBOL  
 DP DOWN PIPE

**NOTES:**  
 1. REFER TO DRAWING A201 FOR EXTERIOR FINISHES SCHEDULES.



**PROJECT CONSULTANTS WA**  
 P T Y L T D  
 ACN 602 924 336 ABN 40 415 457 574  
 CONTACT No. 0430 466 223

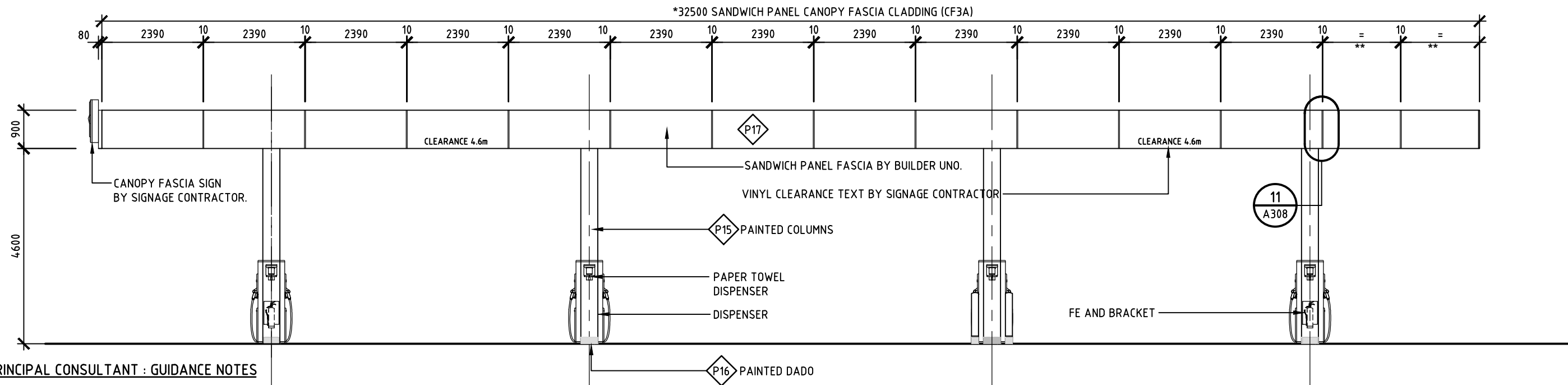
REV.	BY	DATE	DESCRIPTION OF CHANGE
C	JS	07.09.18	PARAPET EXTENDED, WINDOWS INCREASED JARRAH TIMBER SLATS ADDED TO FENCE
D	JS	12.09.18	SERVICE YARD REDUCED LANDSCAPING ADDED
E	JS	03.10.18	PARAPET WALL REVISED BLADE SIGN ADDED
REVISION			

**PROJECT**  
**ALKIMOS - WA**  
**MARMION AVENUE**  
**CNR SANDERLING STREET**

**TITLE**  
**SHOP : ELEVATIONS**  
**PROPOSED**  
**SHEET 2**

SCALE	DEVELOPMENT	
1:100	APPROVED	DATE
SIZE	DRAWING No.	REV.
A3	P1565-A217	E





**PRINCIPAL CONSULTANT : GUIDANCE NOTES**

\* THE EAVES OVERHANG DIMENSIONS SHOWN ARE INDICATIVE ONLY AND ARE BASED ON AN APPROXIMATE 10° LINE OFF VERTICAL FROM CANOPY EDGE TO CREST OF FORECOURT. SITE SPECIFIC REQUIREMENTS FOR DRAINAGE/OVERHANGS SHALL BE DETERMINED BY THE CIVIL ENGINEER AND DIMENSIONS ADJUSTED ACCORDINGLY

\*\* MAKE UP PANEL

\*\*\* IF END PANEL IS LESS THAN HALF OF 2390mm THEN DIVIDE EQUALLY THE TWO END PANELS.

\*\*\*\*CRITICAL OH&S DIMENSION

**NOTE : CONSTRUCTION**

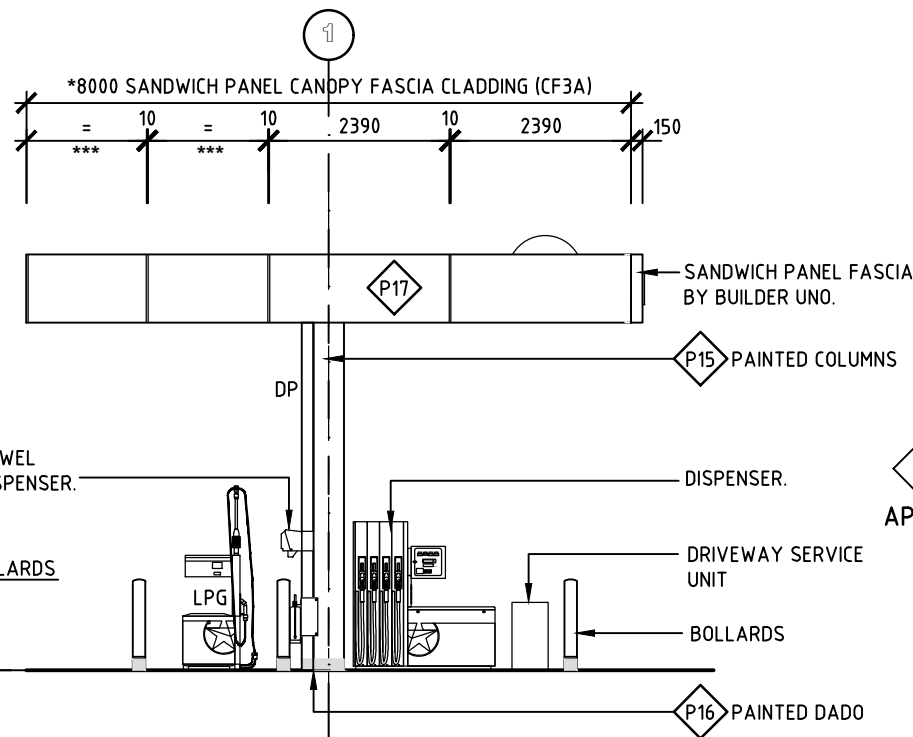
C.01 PRODUCT INDICATOR BOARDS NOT SHOWN FOR DRAWING CLARITY.

**NOTE : GENERAL**

G.01 DRAWINGS NOTING 'BCC' RELATE TO DOCUMENTATION SUITABLE FOR USE IN THE BRISBANE CITY COUNCIL (BCC) OR ASSOCIATED AREAS.

G.02 THIS CANOPY DOES NOT COMPLY FOR USE IN THE BRISBANE CITY COUNCIL AREA. MODIFY AS NECESSARY IF USED IN THIS AREA.

**C SHOP SIDE ELEVATION**  
A300



**D REAR ELEVATION**  
A300

**CANOPY - FINISHES SCHEDULE**

KEY	MATERIAL	MANUFACTURER	REF. NO.	FINISH	COLOUR
ACM FASCIA	ALUMINIUM COMPOSITE SHEET	SIGNAGE SUPPLIER	CF3 - TL	SATIN	RED
SANDWICH PANEL TOP FLASHING	STEEL	BLUESCOPE LYSAGHT	-	DULUX PAINT FINISH - SATIN	DULUX 'CALTEX' CANOPY RED
ROOF	STEEL	BLUESCOPE LYSAGHT	KLIPOK 700 HI-STRENGTH 0.48 BMT	'COLORBOND' SATIN	SURFMIST
SOFFIT LINING AND TRIM	STEEL	BLUESCOPE LYSAGHT	EASYCLAD 2PF 300	'COLORBOND' SATIN	SURFMIST
BOLLARDS	METAL	LEDA	HIG150RCAL + FULL STOP RING	VARIOUS	VARIOUS

KEY	ITEM/SUBGRADE	COLOUR/CODE	SPECIFICATION
P15	CANOPY - METAL COLUMNS - METAL BOLLARDS	SPIDERS WEB DULUX 84645 (DELTA LIGHT GREY)	AU_SD08562 DULUX SUPER ENAMEL HIGH GLOSS ON NEW ZINC COATED STEEL / GALVANISED STEEL (COMMERCIAL) [EXTERIOR / COASTAL] 1ST COAT AUDD0156 DULUX PROFESSIONAL GALVANISED IRON PRIMER 2ND COAT AUDD0026 SUPER ENAMEL HIGH GLOSS 3RD COAT AUDD0026 SUPER ENAMEL HIGH GLOSS
P16	CANOPY - METAL COLUMNS (DADO)	DULUX84599 MEDIUM GREY	AU_SD08562 DULUX SUPER ENAMEL HIGH GLOSS ON NEW ZINC COATED STEEL / GALVANISED STEEL (COMMERCIAL) [EXTERIOR / COASTAL] 1ST COAT AUDD0156 DULUX PROFESSIONAL GALVANISED IRON PRIMER 2ND COAT AUDD0026 SUPER ENAMEL HIGH GLOSS 3RD COAT AUDD0026 SUPER ENAMEL HIGH GLOSS
P17	CANOPY - INSULATED ALUMINIUM SANDWICH PANEL	DULUX 'CALTEX' CANOPY RED - A4010	AUS13768 DULUX WEATHERSHIELD GLOSS ON PREVIOUSL POWDER COATED ALUMINIUM ( EXTERIOR ) 1ST COAT AUD10540 DULUX LUXEPOXY 4 WHITE PRIMER TWO PACK PRIMER 2ND COAT AUDD0054 DULUX WEATHERSHIELD GLOSS 3RD COAT AUDD0054 DULUX WEATHERSHIELD GLOSS

**PROJECT CONSULTANTS WA**  
P T Y L T D  
ACN 602 924 336 ABN 40 415 457 574  
CONTACT No. 0430 466 223

**CALTEX**  
Caltex Australia Petroleum Pty Ltd  
COPYRIGHT  
THIS DRAWING & DESIGN MUST NOT BE COPIED IN WHOLE OR PART WITHOUT THE WRITTEN CONSENT OF CALTEX AUSTRALIA PETROLEUM PTY LTD.

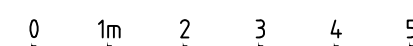
REV.	BY	DATE	DESCRIPTION OF CHANGE
A	JS	17.12.18	DEVELOPMENT APPLICATION

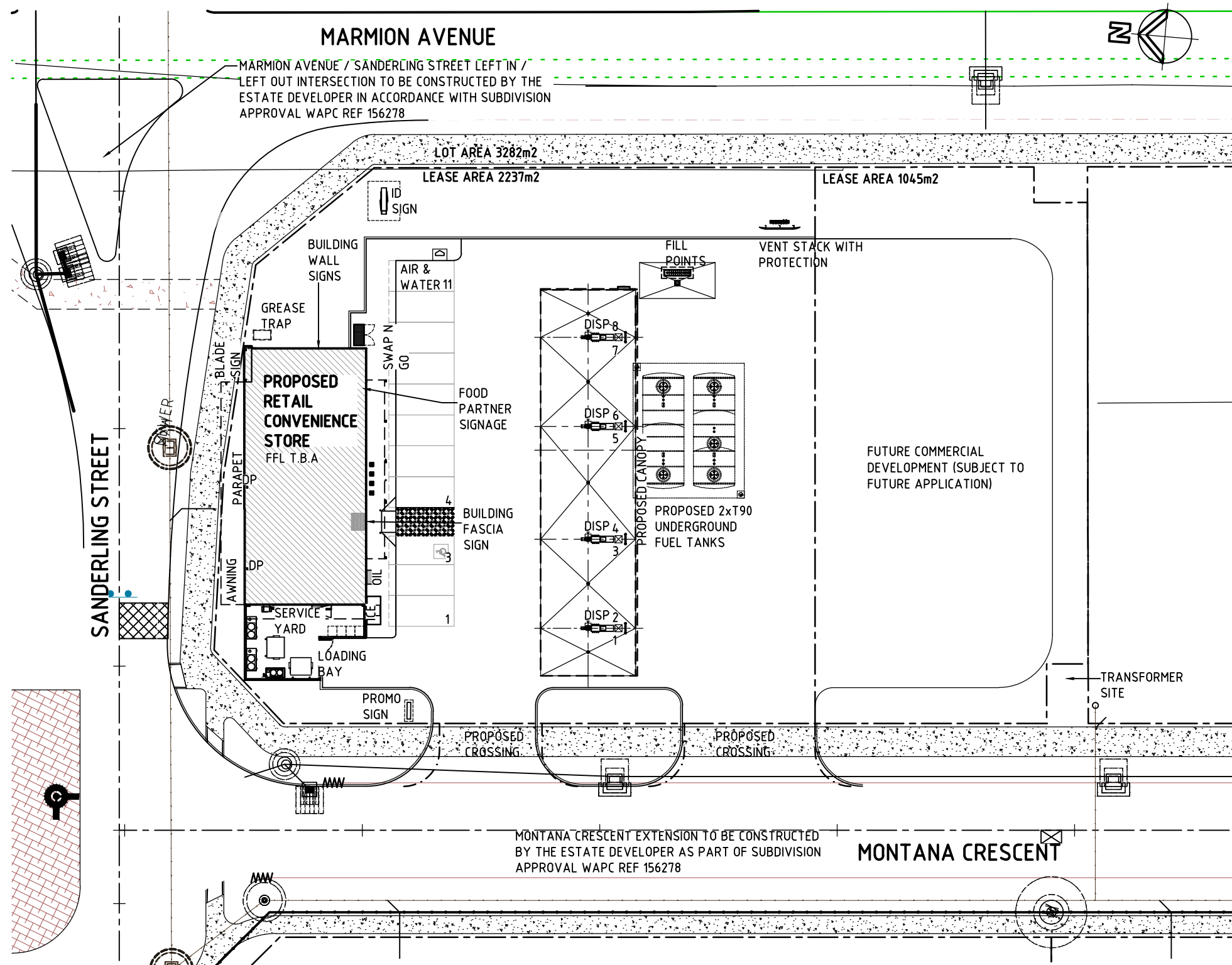
REVISION

PROJECT  
**ALKIMOS - WA**  
MARMION AVENUE  
CNR SANDERLING STREET

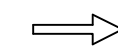







TITLE  
**CANOPY : ELEVATIONS**

SCALE	DEVELOPMENT	
1:100	APPROVED	DATE
SIZE	DRAWING No.	REV.
A3	P1565-A304	A






**LEGEND**

-  NEW YELLOW PAINTED DIRECTIONAL ARROW.
-  WHITE 'SYMBOL OF ACCESS' 900 HIGH ON BLUE RECTANGLE 1200 SQ. TO COMPLY WITH AS1428.1
-  100mm WIDE YELLOW PAINTED CAR PARK LINE.
-  SINGLE FLOOD LIGHT COMPLETE WITH FOOTING & CONNECTION TO EXTERNAL LIGHTING CIRCUIT.
-  FUEL DISPENSER.
-  SITE SETOUT POINT.
-  EXTENT OF LANDSCAPING
-  CONCRETE KERB

**NOTES : CONSTRUCTION**

- C.01 FOR BUILDING DIMENSIONS REFER TO FLOOR PLAN.
- C.02 ALL SIGNAGE SHOWN IS INTERNALLY ILLUMINATED UNO.
- C.03 CONFIRM EXACT SITE DIMENSIONS PRIOR TO COMMENCING CONSTRUCTION.
- C.04 MERGE ALL CURVED SECTIONS OF ROAD INTO STRAIGHT SECTIONS.
- C.05 KERB RAMPS SHOWN TO BE AT A MAXIMUM GRADIENT OF 1 IN 8 AND SHALL FULLY COMPLY WITH THE REQUIREMENTS OF A 'KERB RAMP' AS DEFINED IN AS1428.

**P R O J E C T**  
**C O N S U L T A N T S W A**  
P T Y L T D  
ACN 602 924 336 ABN 40 415 457 574  
CONTACT No 0430 466 223



**CALTEX**  
Caltex Australia Petroleum Pty Ltd

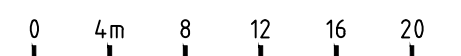
COPYRIGHT  
THIS DRAWING & DESIGN MUST NOT BE COPIED IN WHOLE OR PART WITHOUT THE WRITTEN CONSENT OF CALTEX AUSTRALIA PETROLEUM PTY LTD.

REV.	BY	DATE	DESCRIPTION OF CHANGE
A	TD	10.07.18	DEVELOPMENT APPLICATION
B	JS	14.08.18	BUILDING REVISED, ROLL OVER KERB REMOVED
C	JS	03.10.18	DEVELOPER SITE REVISED BUILDING POSITION REVISED
REVISION			

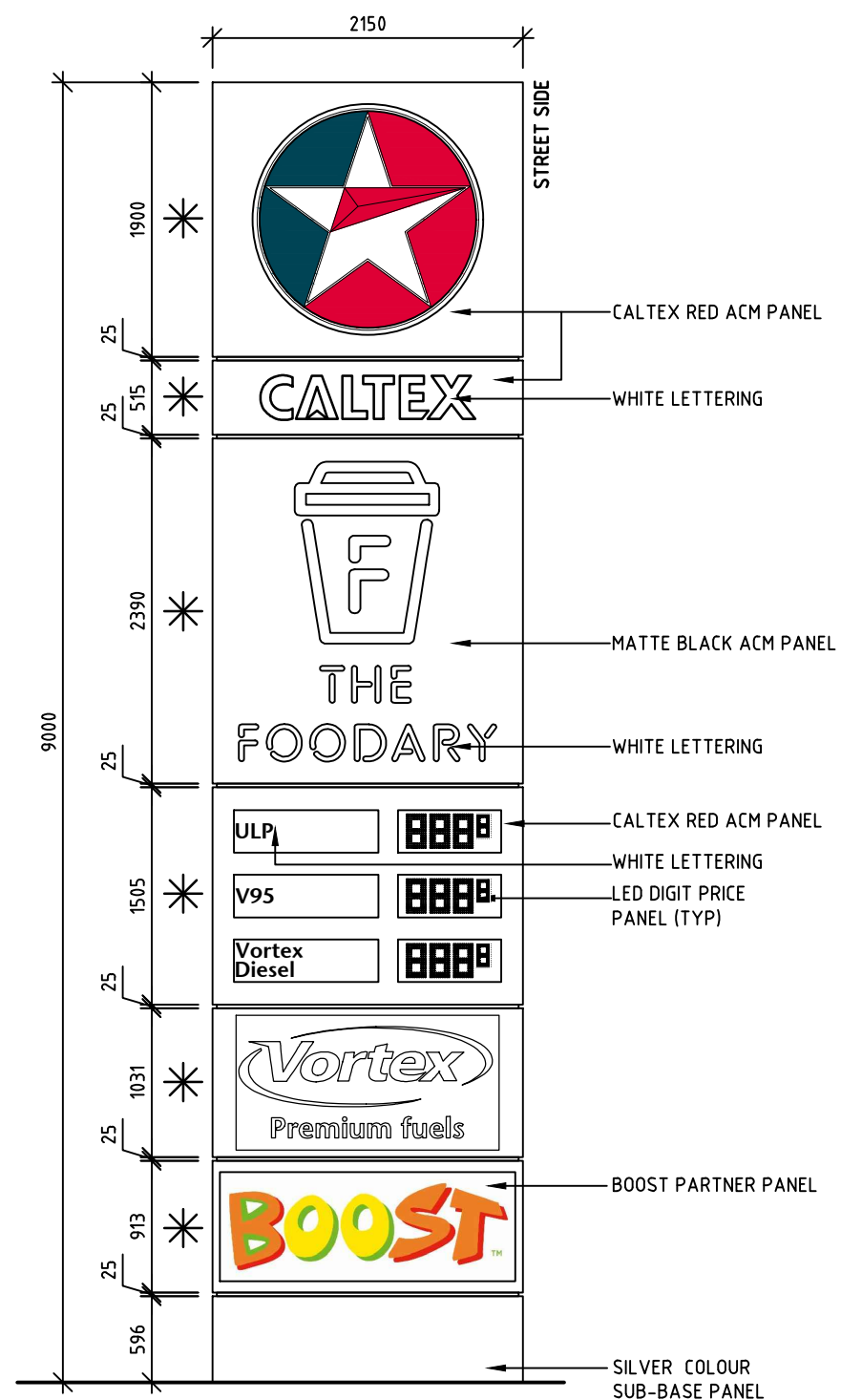
PROJECT  
**ALKIMOS - WA**  
**MARMION AVENUE**  
**CNR SANDERLING STREET**

TITLE  
**SITE; PLAN**  
**SIGNAGE**

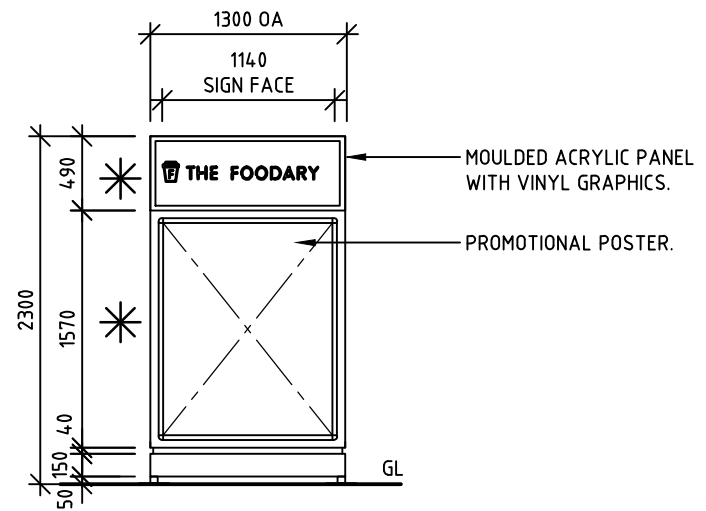
SCALE <b>1:400</b>	<b>DEVELOPMENT</b>	
SIZE <b>A3</b>	APPROVED	DATE
	DRAWING No. <b>P1565-S100</b>	REV. <b>C</b>



\* INTERNALLY ILLUMINATED SIGN BOX



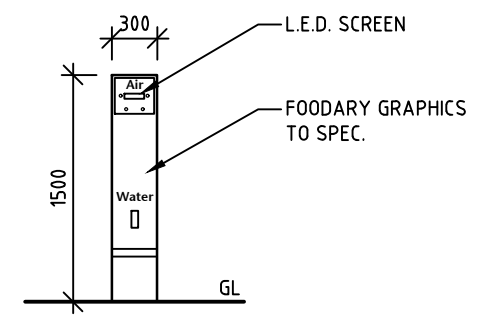
**I.D. SIGN** 1 OFF



**STREET PROMO SIGN**

1 OFF

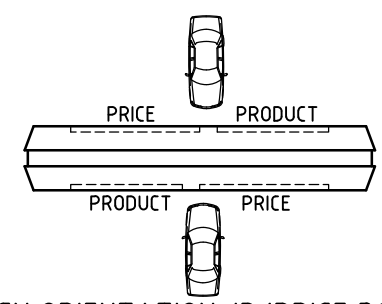
**SIGN MANUFACTURER**  
**NOTE:**  
 SIGNAGE PANEL SIZES & GRAPHICS ARE INDICATIVE ONLY. FOR FINAL DETAILS REFER TO APPROVED SIGNAGE ARTWORK SHOWING PANEL DETAILS & GRAPHICS ISSUED WITH SUPPLY CONTRACT.



**AIR & WATER SIGN**

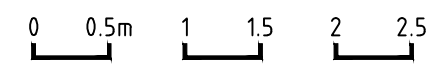
1 OFF

FITTED WITH A NON-BEEPING ALARM AND PROGRAMMED TO BE AT LEAST 6dB LESS THAN LEVEL REFERENCED IN TABLE 3.2 OF LLOYD GEORGE ACOUSTIC REPORT



**SIGN ORIENTATION-ID/PRICE BOARD**  
 (ID/PRICE SIGNS TO READ LEFT TO RIGHT-PRODUCT THEN PRICE)

**PROJECT CONSULTANTS WA**  
 P T Y L T D  
 ACN 602 924 336 ABN 40 415 457 574  
 CONTACT No. 04 30 466 223



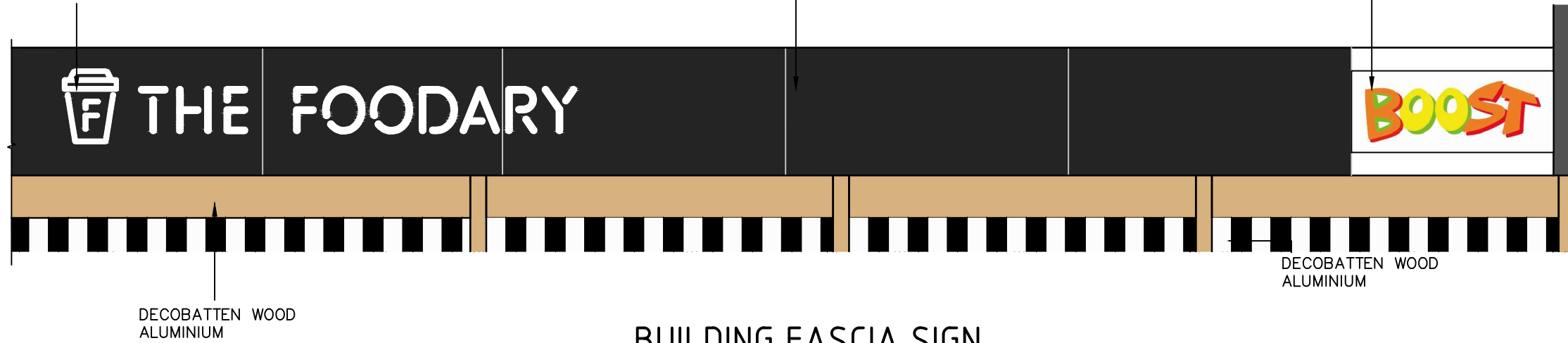
 <b>CALTEX</b> Caltex Australia Petroleum Pty Ltd <small>COPYRIGHT          THIS DRAWING &amp; DESIGN MUST NOT BE COPIED IN WHOLE OR PART WITHOUT THE WRITTEN CONSENT OF CALTEX AUSTRALIA PETROLEUM PTY LTD.</small>	REV.	BY	DATE	DESCRIPTION OF CHANGE	PROJECT <b>ALKIMOS - WA</b> MARMION AVENUE CNR SANDERLING STREET	TITLE SIGNAGE DETAILS SHEET 1	SCALE	DEVELOPMENT	
	A	TD	10.07.18	DEVELOPMENT APPLICATION			APPROVED	DATE	
	REVISION						DRAWING No.	REV.	
							A3	P1565-S110	A

OPAL ACRYLIC LETTERS AND  
INTERNAL 3D ILLUMINATED CUP  
SIGN BY SIGNAGE CONTRACTOR

AB2 ACM PANELING AT BUILDING  
LINE

BOOST SIGNAGE TO BOOST SPEC.  
BY SIGNAGE CONTRACTOR

✱ INTERNALLY ILLUMINATED SIGN BOX



**BUILDING FASCIA SIGN**

1 OFF



OPAL ACRYLIC LETTERS AND  
INTERNAL 3D ILLUMINATED CUP  
SIGN BY SIGNAGE CONTRACTOR

FLEXIFACE SIGN  
WITH SAILTRACK  
END CONNECTIONS

**BUILDING WALL SIGN**

1 OFF

PROJECT  
CONSULTANTS WA  
P T Y L T D  
ACN 602 924 336 ABN 40 415 457 574  
CONTACT No 0430 466 223



 <p><b>CALTEX</b> Caltex Australia Petroleum Pty Ltd</p> <p><small>COPYRIGHT THIS DRAWING &amp; DESIGN MUST NOT BE COPIED IN WHOLE OR PART WITHOUT THE WRITTEN CONSENT OF CALTEX AUSTRALIA PETROLEUM PTY LTD.</small></p>	REV.	BY	DATE	DESCRIPTION OF CHANGE	PROJECT <b>ALKIMOS - WA</b> MARMION AVENUE CNR SANDERLING STREET	TITLE SITE SIGNAGE DETAILS SHEET 2	SCALE 1:50	DEVELOPMENT		
	A	TD	10.07.18	DEVELOPMENT APPLICATION			APPROVED	DATE		
	REVISION						DRAWING No.	REV.		
						SIZE A3		P1565-S111		A