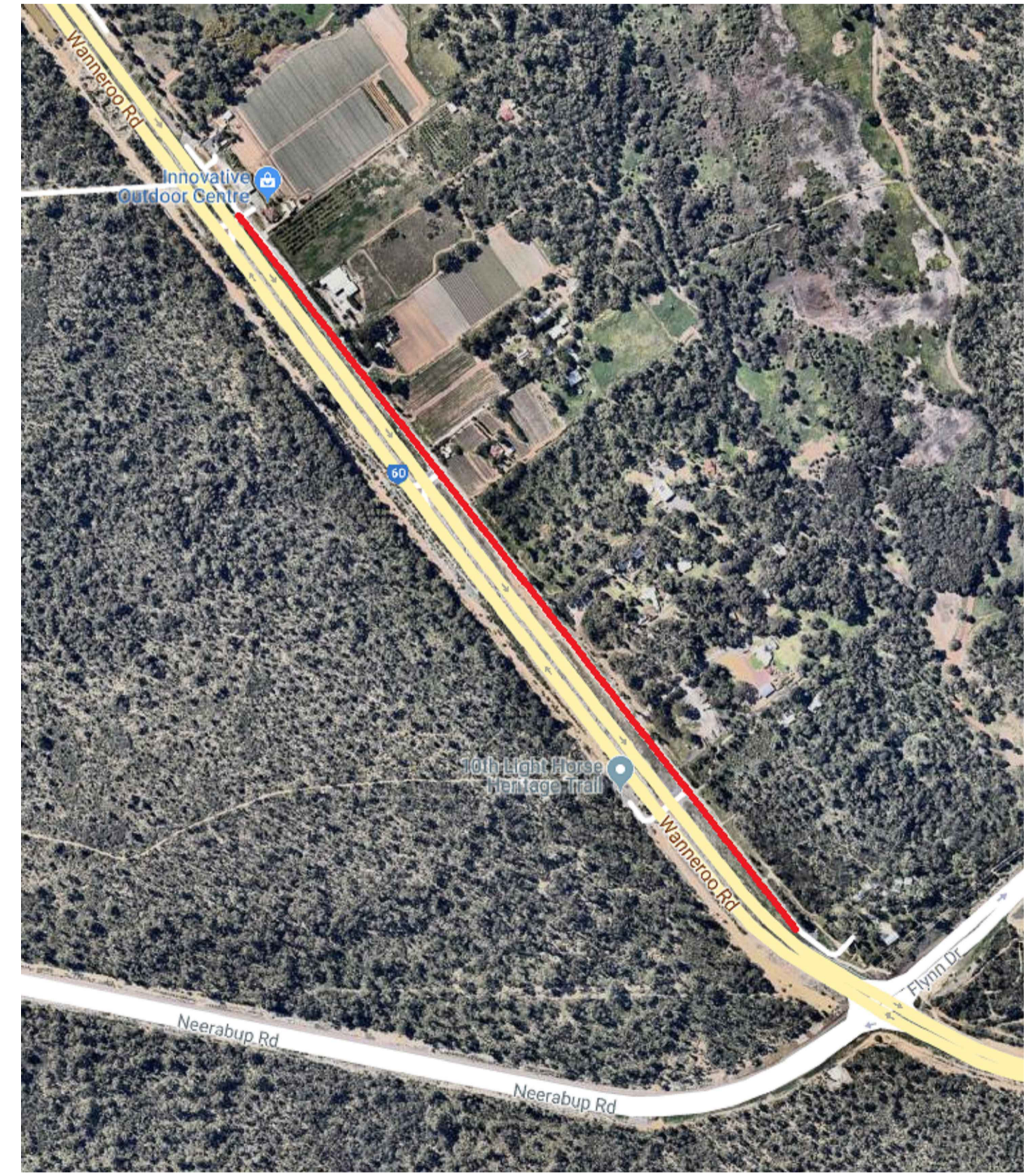


LANDSCAPING

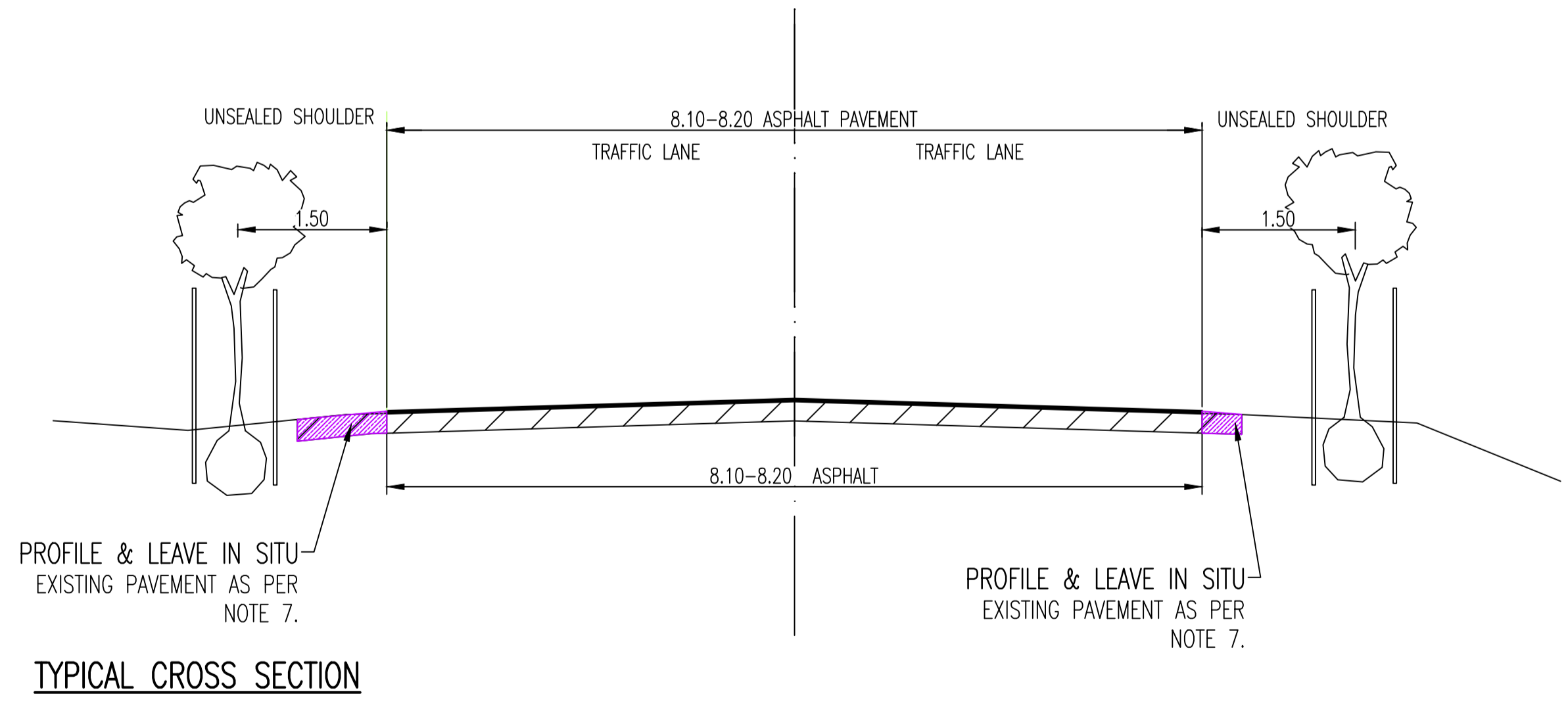
PLANT EUCALYPTUS VICTRIX AND ENUCALYPTUS TORQUATA ALTERNATING, 45L BAGS WITH 8m CENTRES AS PER CITY OF WANNEROO STANDARD DRAWING TS 04-4.

No reticulation is planned for the proposed trees. Watering trucks to be used during the establishment period.

- NOTES:**
- CADASTRAL INFORMATION APPROXIMATE ONLY.
 - SERVICE LOCATIONS DIAGRAMMATIC ONLY. CONTACT SERVICE AUTHORITIES FOR EXACT IN GROUND LOCATIONS.
 - KERBING TO BE CONSTRUCTED IN ACCORDANCE WITH CITY OF WANNEROO DRG. NO TS 05-1 AND TS 05-3.
 - ALL DISTURBANCES TO EXISTING VERGE RETICULATION AND TURFING TO BE REINSTATED.
 - FOR PDF DRAWINGS REFER TO HPE 18/548611.
 - FOR COST ESTIMATE REFER TO HPE 18/548567.
 - PROFILE OUT FULL THICKNESS OF PAVEMENT AT HIGHLIGHTED LOCATIONS THEN SPREAD THE BROKEN UP MATERIAL ON THE SHOULDERS. MAKE SURE TO MAINTAIN THE EXISTING SURFACE LEVELS AND TO NOT INCREASE THE SURFACE LEVEL OF THE SHOULDERS.



LOCALITY



LEGEND

EDGE LINE/OUTLINE MARKING

TREE

PROFILE AND LEAVE IN SITU

PROPOSED

CITY OF WANNEROO ASSETS

WANNEROO ROAD
SERVICE ROAD FROM FLYNN DRIVE TO HALL ROAD
TRAFFIC TREATMENT
NEERABUP

CONSTRUCTION PLAN
SHEET 1 OF 2

DRAWING No. SHEET REVISION ORIGINAL DRG. SIZE

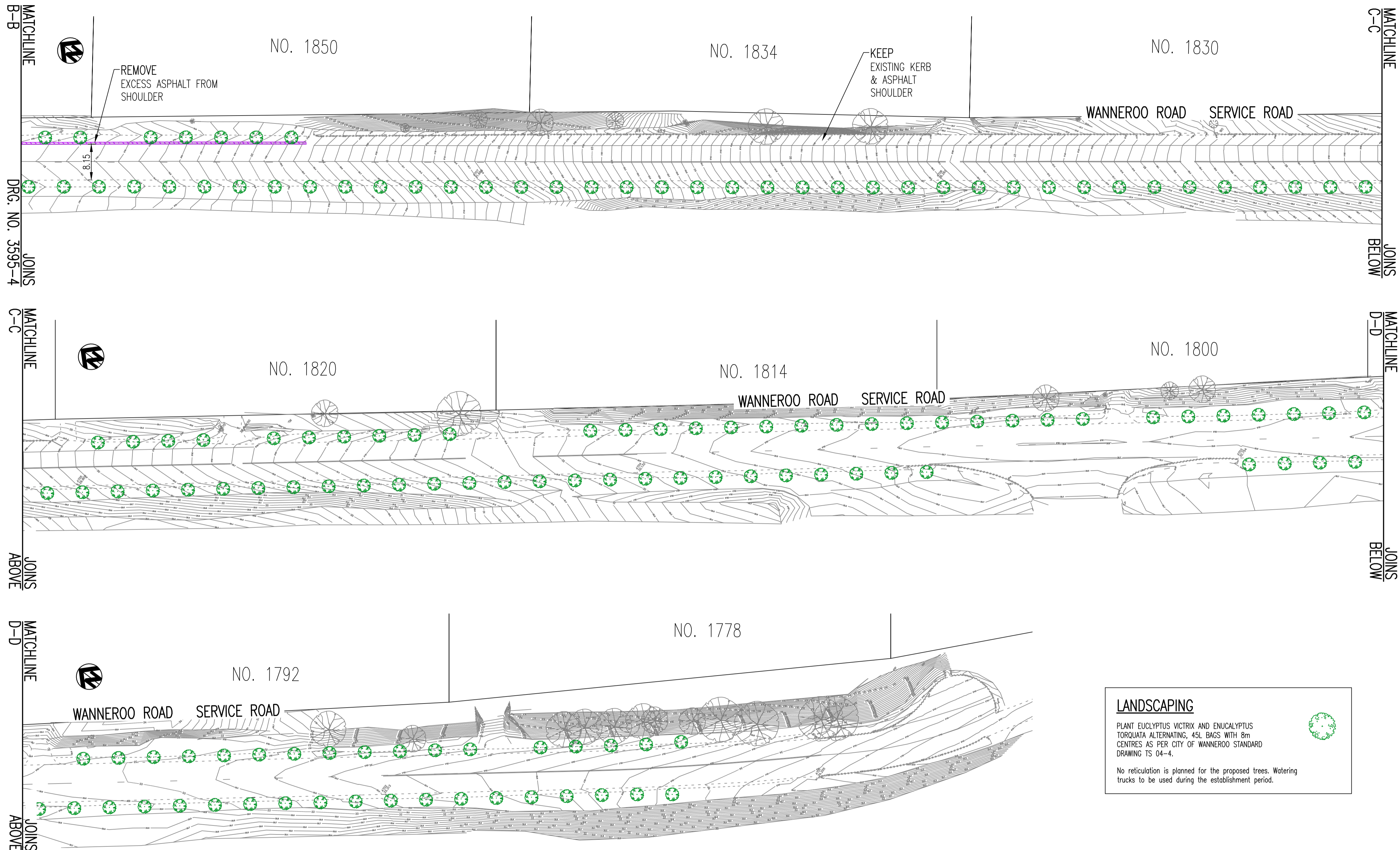
3595-4-0 A1

No.	REVISION	BY	DATE	AUTH	No.	REVISION	BY	DATE	AUTH	No.
A	DRAFT COPY		/2018							
O	ISSUED FOR CONSULTATION		/2019							

SCALE:	5	0	5	10	15	20	25
1:500							
DATUM:	LOCAL						
GRID:	PCC94						

SURVEYED:	B. BOYLAN	12/2018	DRAWN:	K. RICHTER	1/2019	AUTHORISED:	MANAGER PARKS & CONSERVATION MANAGEMENT
DESIGNED:	K. RICHTER	1/2019	CHECKED:			APPROVED:	OPERATIONS MANAGER ASSET OPERATIONS & SERVICES
CIVIL DESIGNER			COORDINATOR TRANSPORT AND TRAFFIC			DIRECTOR ASSETS	

FINANCE CODE	Private Works	PWO No.	0000
DRAWING SET REF	18/548611	PWO CONTAINER No.	1917



LEGEND

EDGE LINE/OUTLINE MARKING ———

TREE

PROFILE AND LEAVE IN SITU

PROPOSED

- NOTES:**
1. CADASTRAL INFORMATION APPROXIMATE ONLY.
 2. SERVICE LOCATIONS DIAGRAMMATIC ONLY. CONTACT SERVICE AUTHORITIES FOR EXACT IN GROUND LOCATIONS.
 3. KERBING TO BE CONSTRUCTED IN ACCORDANCE WITH CITY OF WANNEROO DRG. NO TS 05-1 AND TS 05-3.
 4. ALL DISTURBANCES TO EXISTING VERGE RETICULATION AND TURFING TO BE REINSTITATED.
 5. FOR PDF DRAWINGS REFER TO HPE 18/548611.
 6. FOR COST ESTIMATE REFER TO HPE 18/548567.

LANDSCAPING

PLANT EUCALYPTUS VICTRIX AND ENUCALYPTUS TORQUATA ALTERNATING, 45L BAGS WITH 8m CENTRES AS PER CITY OF WANNEROO STANDARD DRAWING TS 04-4.

No reticulation is planned for the proposed trees. Watering trucks to be used during the establishment period.

No.		REVISION		BY	DATE	AUTH	No.	REVISION		BY	DATE	AUTH	SCALE: 1:500	SURVEYED: B. BOYLAN SURVEYOR 12/2018		DRAWN: K. RICHTER CIVIL DESIGNER 1/2019		AUTHORISED: OPERATIONS MANAGER ASSET OPERATIONS & SERVICES 2/2019		MANAGER PARKS & CONSERVATION MANAGEMENT		FINANCE CODE	PWO No.	DRAWING No.		SHEET	REVISION	ORIGINAL DRG. SIZE
A	DRAFT COPY				/2018								LOCAL	PCC94	DESIGNED: K. RICHTER CIVIL DESIGNER 1/2019	CHECKED: COORDINATOR TRANSPORT AND TRAFFIC 2/2019	APPROVED: DIRECTOR ASSETS 2/2019	Private Works	0000	18/548611	1917	3595-5-0		A1				
O	ISSUED FOR CONSULTATION				/2019																							

CITY OF WANNEROO
ASSETS

WANNEROO ROAD
SERVICE ROAD FROM FLYNN DRIVE TO HALL ROAD
TRAFFIC TREATMENT
NEERABUP

CONSTRUCTION PLAN
SHEET 2 OF 2

