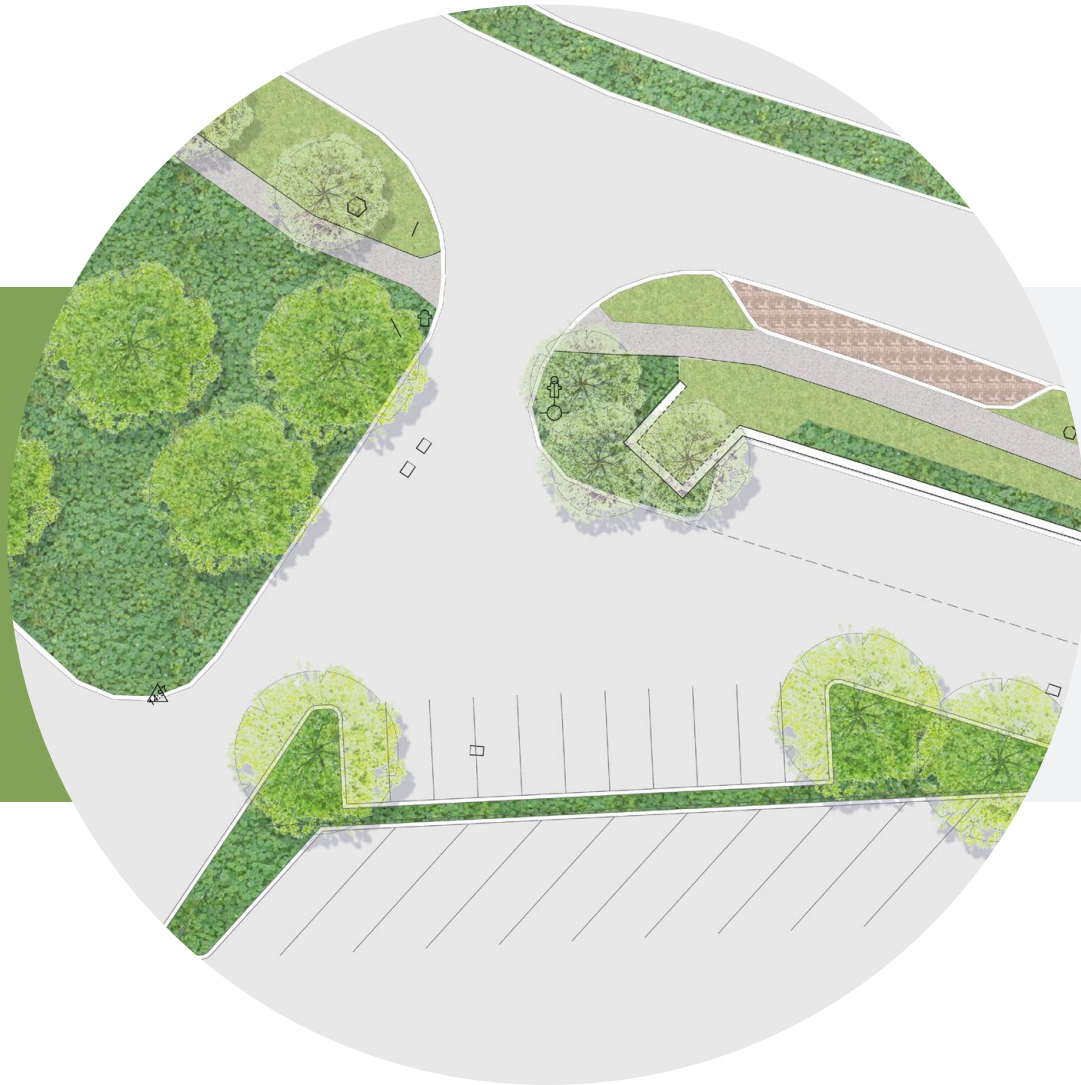


MINDARIE MARINA BOAT
STORAGE FACILITY
MINDARIE, WESTERN AUSTRALIA

LANDSCAPE ARCHITECTURE
REPORT

020.04.17



SEE DESIGN

01. SITE

THE SITE

The site is located on the corner of Ocean Falls Boulevard and Anchorage Drive in Mindarie.

The boat storage facility makes up a part of a significantly larger car park area.

The site is extremely exposed to coastal winds, extreme temperature, and lacks significant shade throughout the carpark.

EXISTING VEGETATION

Anchorage Drive is typified by turf on the verges with significant, healthy Norfolk Island Pine Trees lining the street. Ocean Falls Boulevard has a combination of turf, shrub planting, palm trees, and Casuarina trees lining the street. General health is good. Supplementary planting is suggested to reinvigorate the streetscape.

Internally within the existing carpark, there are a number of healthy Casuarina trees which should be retained and protected. There is little understorey shrub planting that is of any significant value.

VISIBILITY/SAFETY

Planting selections located in the design are chosen to appropriately screen the new fence to the boundary of the boat storage facility. Selections are waterwise, endemic species and will require minimum maintenance.



LOCATION PLAN
NTS



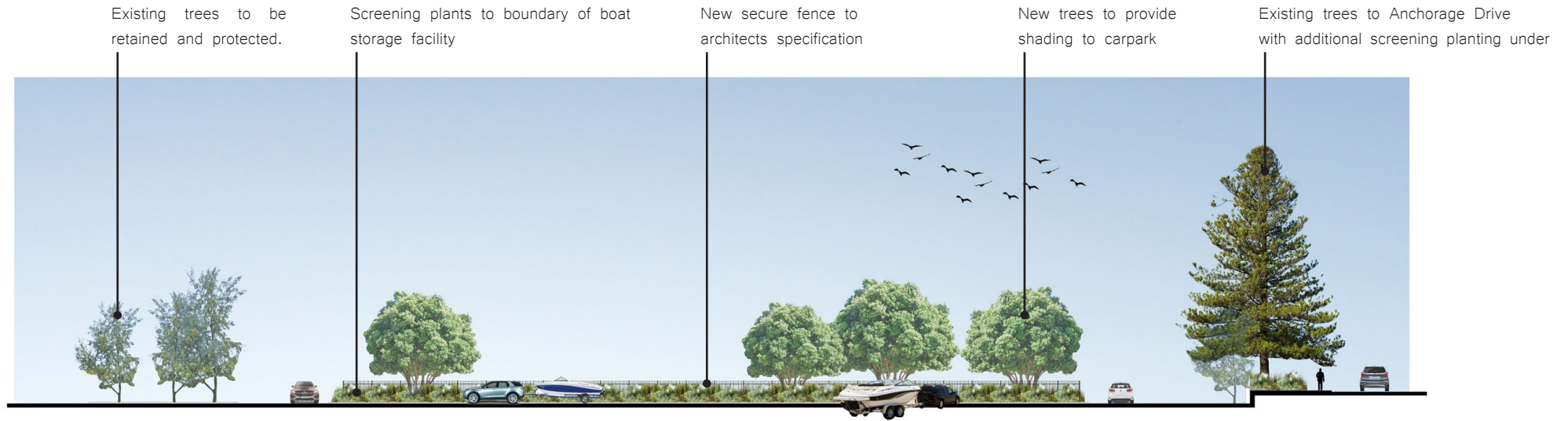
02. LANDSCAPE PLAN



03. SITE SECTION



LOCATION PLAN



Existing trees to be retained and protected.

Screening plants to boundary of boat storage facility

New secure fence to architects specification

New trees to provide shading to carpark

Existing trees to Anchorage Drive with additional screening planting under

ILLUSTRATION ONLY

04. PROPOSED PLANTING SPECIES

All planting selections have been chosen for their ability to withstand the harsh local coastal conditions. More so, plants have been selected based in their ability to thrive in a hot carpark environment. Seasonality has been a key driver in plant selection.

ALL PLANTING SPECIES ARE SUBJECT TO CHANGE

TREES



Metrosideros excelsa
New Zealand Christmas Tree

SUM	AUT	WIN	SPRI



Olea sevellano
Olive Tree

GROUNDCOVERS + SHRUBS UNDER 600MM



Westringia fruticosa
Coastal rosemary

SUM	AUT	WIN	SPRI



Carpobrotus virescens
Coastal Pigface

SUM	AUT	WIN	SPRI



Acacia saligna prostrate

SUM	AUT	WIN	SPRI



Adenanthos cuneatus
'Coral Carpet'

SUM	AUT	WIN	SPRI



Myoporum parvifolium
Creeping boobialla

SUM	AUT	WIN	SPRI



Eremophila glabra
Carramar Carpet

SUM	AUT	WIN	SPRI



Atriplex cinerea
Coastal saltbush

SUM	AUT	WIN	SPRI



Conostylis candicans
'Grey Cotton Heads'

SUM	AUT	WIN	SPRI



Leucophyta brownii
'Silver Nugget'

SUM	AUT	WIN	SPRI



Olearia axillaris mini

SUM	AUT	WIN	SPRI

04. PROPOSED PLANTING SPECIES

CLIMBERS



Hibbertia scandens
Snake Vine

SUM	AUT	WIN	SPRI

SHRUBS OVER 2M FOR SCREENING



Adenanthos sericues
'Pencil Perfect'

SUM	AUT	WIN	SPRI



Banksia Berdetts

SUM	AUT	WIN	SPRI



Chamelacium unicanthum
Lady Stephanie

SUM	AUT	WIN	SPRI



Melaleuca nesophila
Little Nessie

SUM	AUT	WIN	SPRI

Mindarie Marina – Dry Boat Storage

Cnr Ocean Falls Blvd and Anchorage Dr

Landscape Document Package

Drawing List

LA-00-01	Cover page
LA-01-01	General Arrangement
LA-02-01	Planting Plan
LA-02-02	Planting Plan
LA-02-03.1	Planting Plan
LA-02-03.2	Planting Plan
LA-03-01	Details

Planting Schedules

Trees

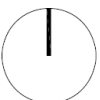
Code	Species	Qty	Pot Size
Me	<i>Metrosideros excelsa</i>	6	200 Lt
Os	<i>Olea seavillano</i>	0	200 Lt

Shrubs

Code	Species	Qty	Pot Size
Asp	<i>Acacia saligna prostrate</i>	24	140 mm
Ac	<i>Adenanthos Cuneatus</i>	12	140 mm
Wf	<i>Westringia Fruiticosa</i>	12	140 mm
Cv	<i>Carpobrotus Virescens</i>	12	140 mm
Mp	<i>Myoporum parvifolium</i>	39	140 mm
Eg	<i>Eremophila glabra</i>	21	140 mm
Ac	<i>Atriplex cinereal</i>	54	140 mm
Cc	<i>Conostylis candicans</i>	12	140 mm
Lb	<i>Leucophyta Brownii</i>	12	140 mm
Oam	<i>Olearia axillaris mini</i>	52	140 mm
Hs	<i>Hibbertia scandens</i>	15	140 mm
As	<i>Adenanthos sericues</i>	27	140 mm
Bb	<i>Banksia Berdetts</i>	27	140 mm
Cu	<i>Chamelacium unicantum</i>	27	140 mm
Mn	<i>Melaleuca nesophila</i>	27	140 mm



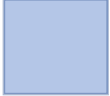
Project: Mindarie Dry Boat Store
 DWG Ref: LA-00-01
 Rev: A
 Description: For City of Wanneroo
 Date: 19/9/18



General Arrangement Plan

Extent of works

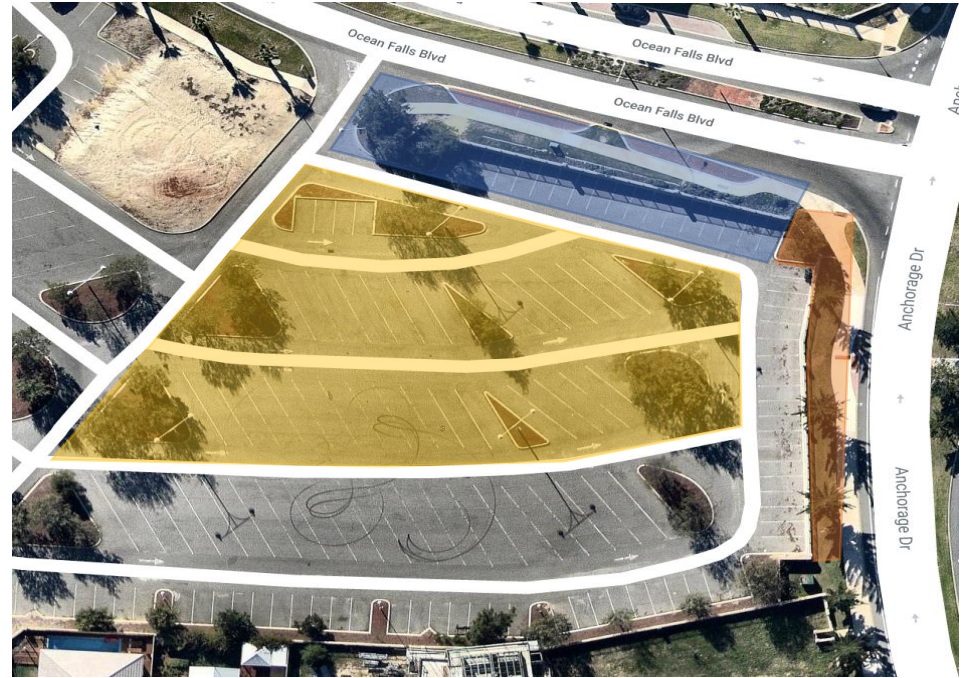
LA-02-01



LA-02-02

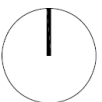


LA-02-03



Project:
DWG Ref:
Rev:
Description:
Date:

Mindaire Dry Boat Store
LA-01-01
A
For City of Wanneroo
19/9/18



Existing Verge Plants

- 1 Replant to match existing species and density
- 2 Replant to match existing species and density
- 3 Replant to match existing species and density



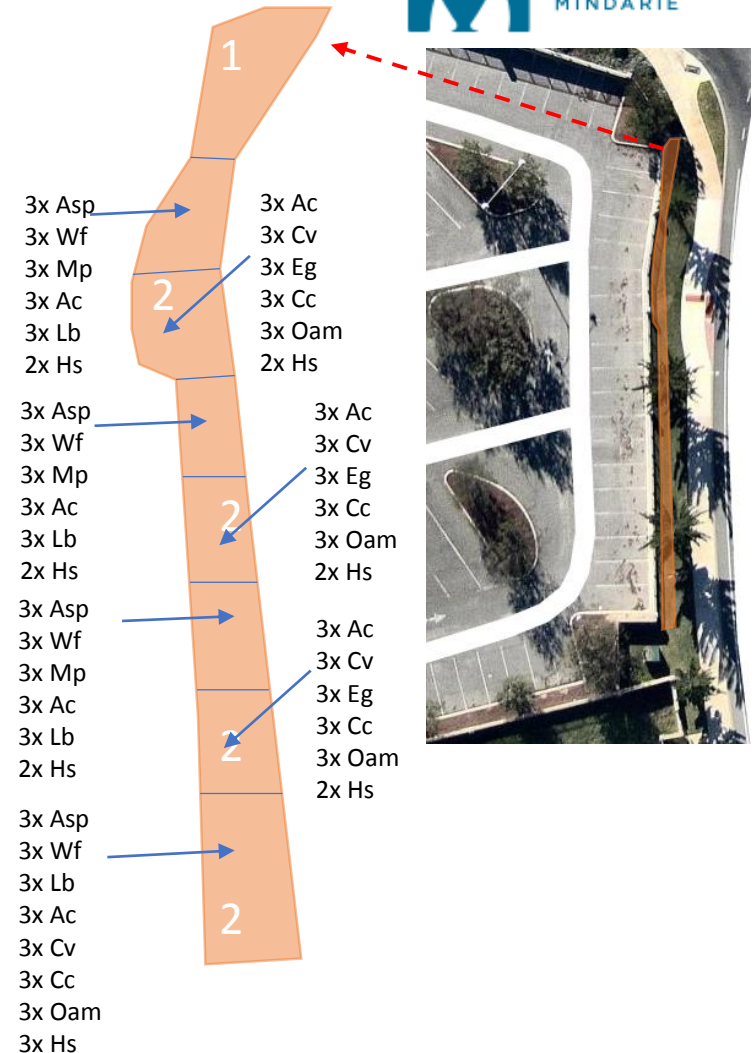
Infill planting required, existing vegetation in good condition.

Project: Mindaire Dry Boat Store
DWG Ref: LA-02-01
Rev: A
Description: For City of Wanneroo
Date: 19/9/18



New Verge Planting

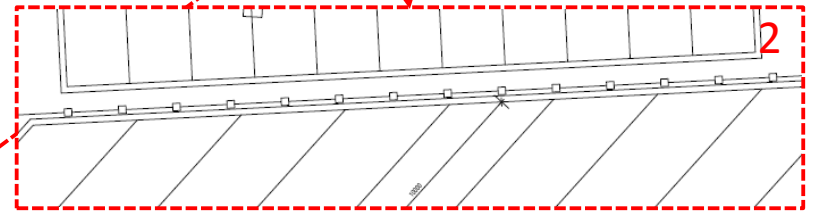
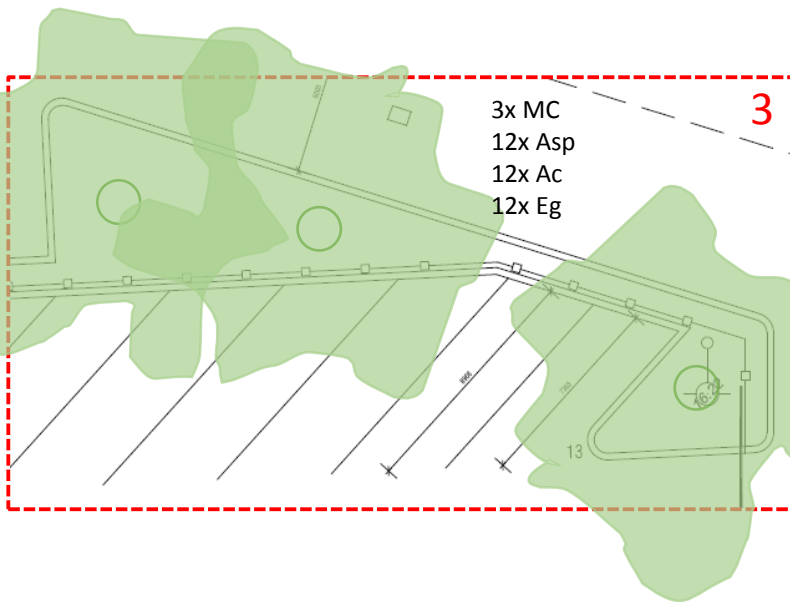
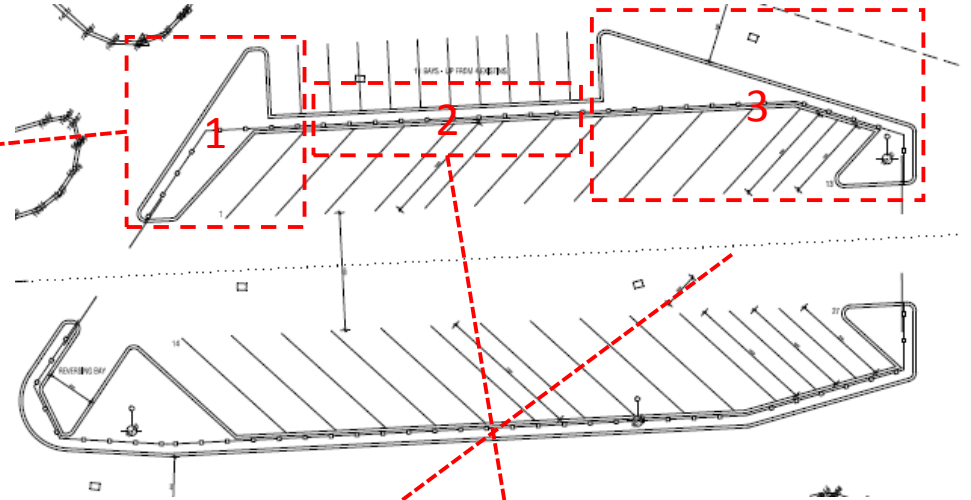
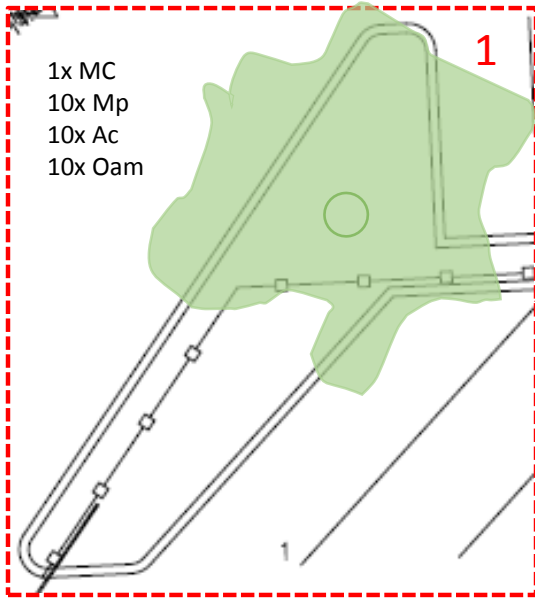
- 1 – at transition point the new plants will match existing in species and density ~6m in length and ~1m in width
- 2 – as per mix on proposed planting species as documented by Seededesign 20/4/17 planting to screen dry boat storage ~44m in length and ~1m in width



Project:
DWG Ref:
Rev:
Description:
Date:

Mindaire Dry Boat Store
LA-02-02
A
For City of Wanneroo
19/9/18



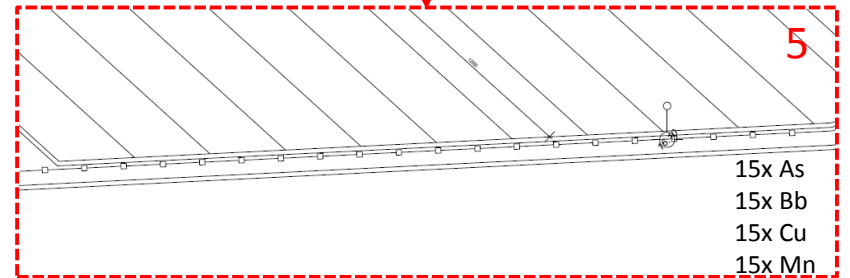
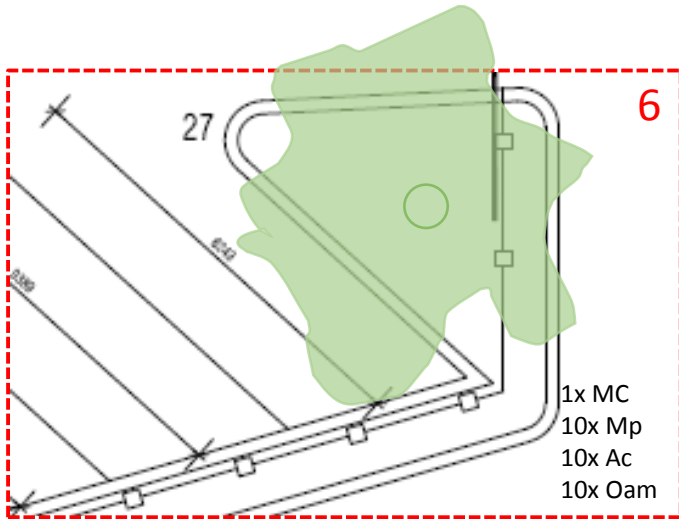
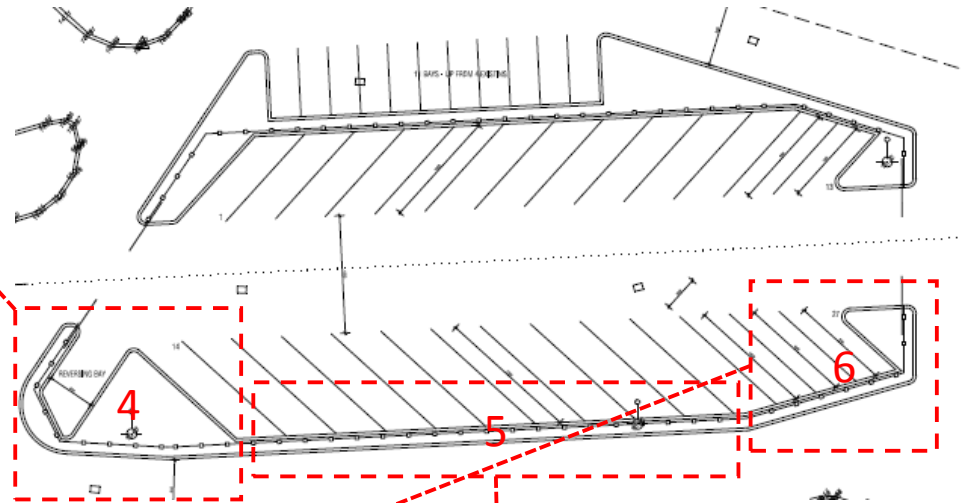
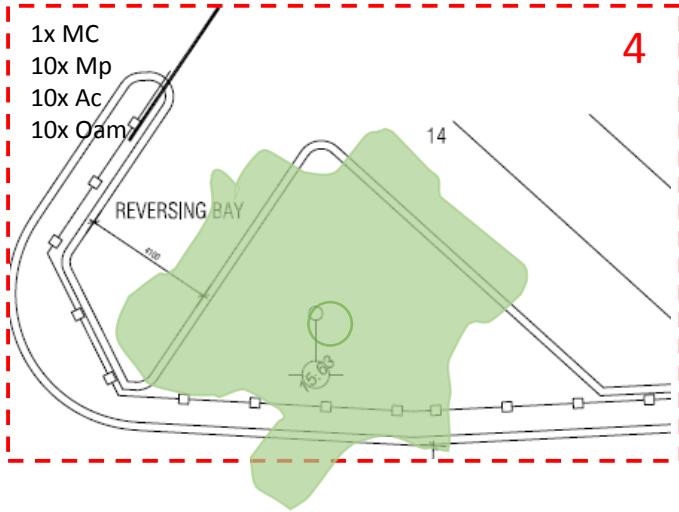


- 12x As
- 12x Bb
- 12x Cu
- 12x Mn

Project:
DWG Ref:
Rev:
Description:
Date:

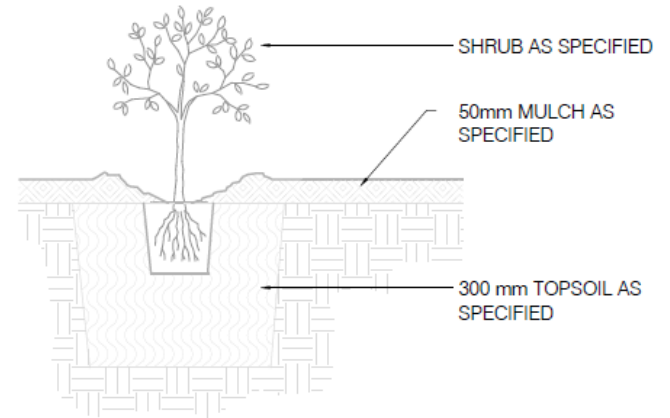
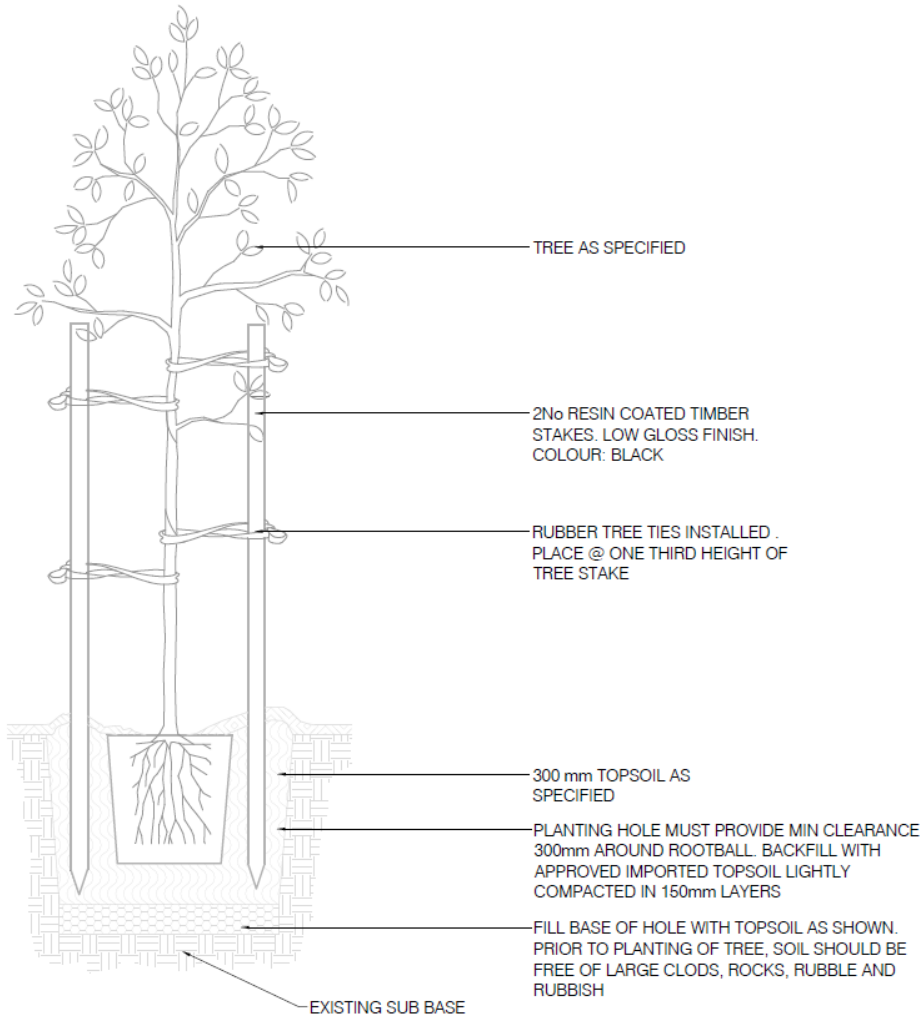
Mindaire Dry Boat Store
LA-02-03.1
A
For City of Wanneroo
19/9/18





Project: Mindaire Dry Boat Store
 DWG Ref: LA-02-03.2
 Rev: A
 Description: For City of Wanneroo
 Date: 19/9/18





Project:
DWG Ref:
Rev:
Description:
Date:

Mindaire Dry Boat Store
LA-03-01
A
For City of Wanneroo
19/9/18

