

NOTE: ALL FEATURES SHOWN ON SURVEY ARE POSITIONED FROM EXISTING PEGS / FENCES & WALLS WHICH MAY NOT BE ON THE CORRECT ALIGNMENT.

SOIL DESCRIPTION

Sandy
Light Grass Cover

WITHIN
WAY

MENT IS TO
RAYING OF
ACCORDANCE
660.1

ER DRAINAGE BY
NCIL REQUIREMENTS

REVISION:
B

SHEET No:
1 OF 5

THE DRAWINGS
THE CONTRACT.

WITNESS

WITNESS

WITNESS

Date Dm: By:

FACT 16/09/05 S.D.V

Scale: CHECKED:

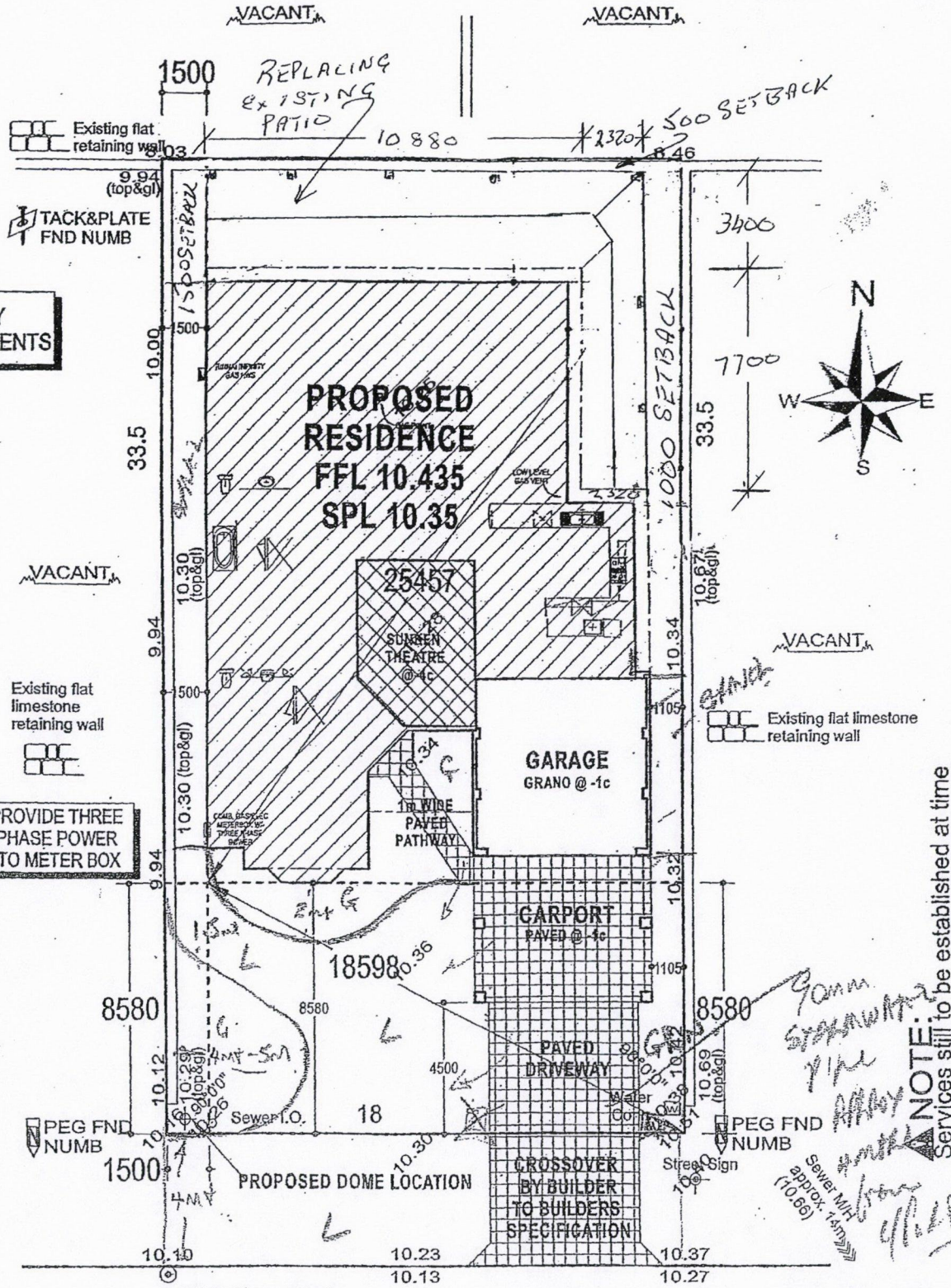
5 1:200 JM

HEADER BORDER

ONE

PAVING
TENTS

RICTIVE COVENANT.
SEC 136D T.L.A.
MENT



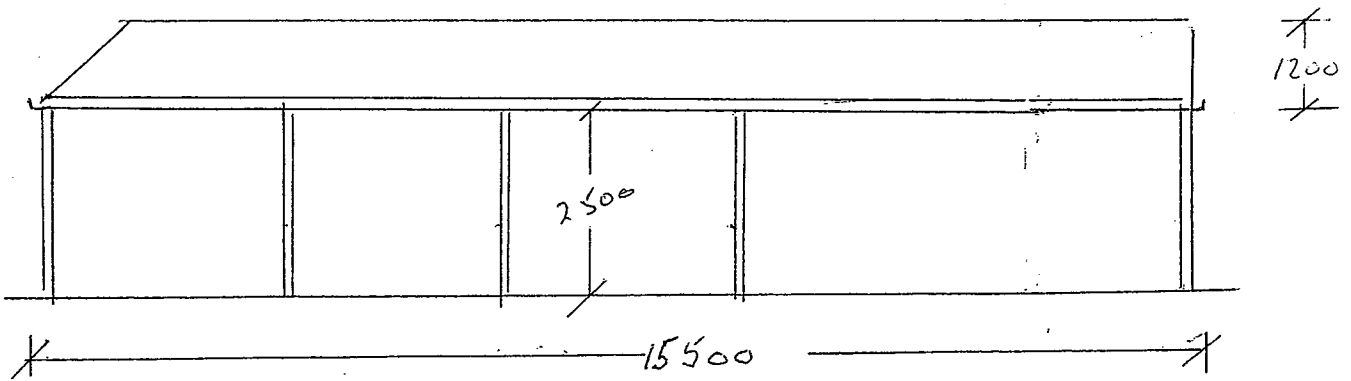
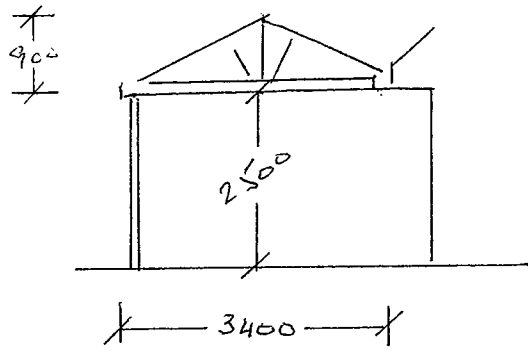
NOTE: Services still to be established at time of survey - verify availability with

Handwritten notes:
Gonna separate the driveway with the fence
Sewer M/R approx. 1.4m @ (10.69)

NOTE: NOTIFICATION REFER TO SEC 12A TP & D ACT SEE DOCUMENT Re: Motorsport Noise

Riverdell Fairway

NOTE/BEWARE: ADVISE TRADES **NOTE:** All Sewer details plotted from information supplied by W



NO CHANGE TO EXISTING FLOOR LEVELS.

