

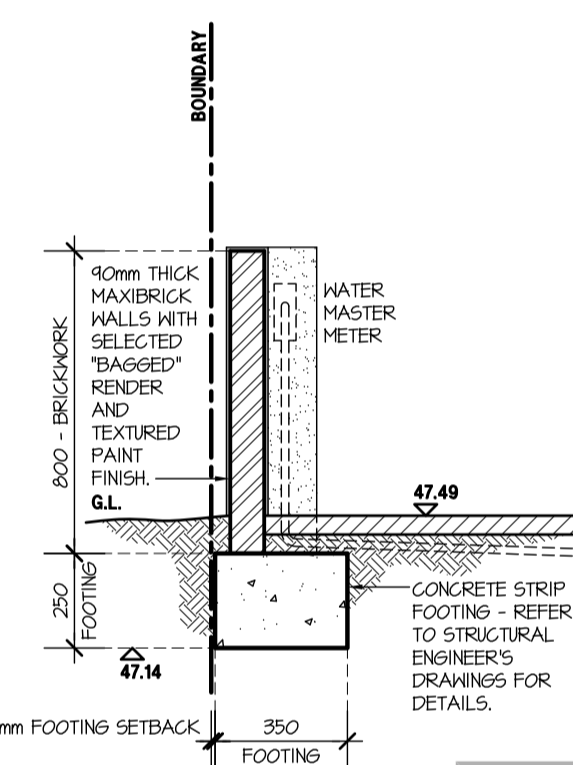
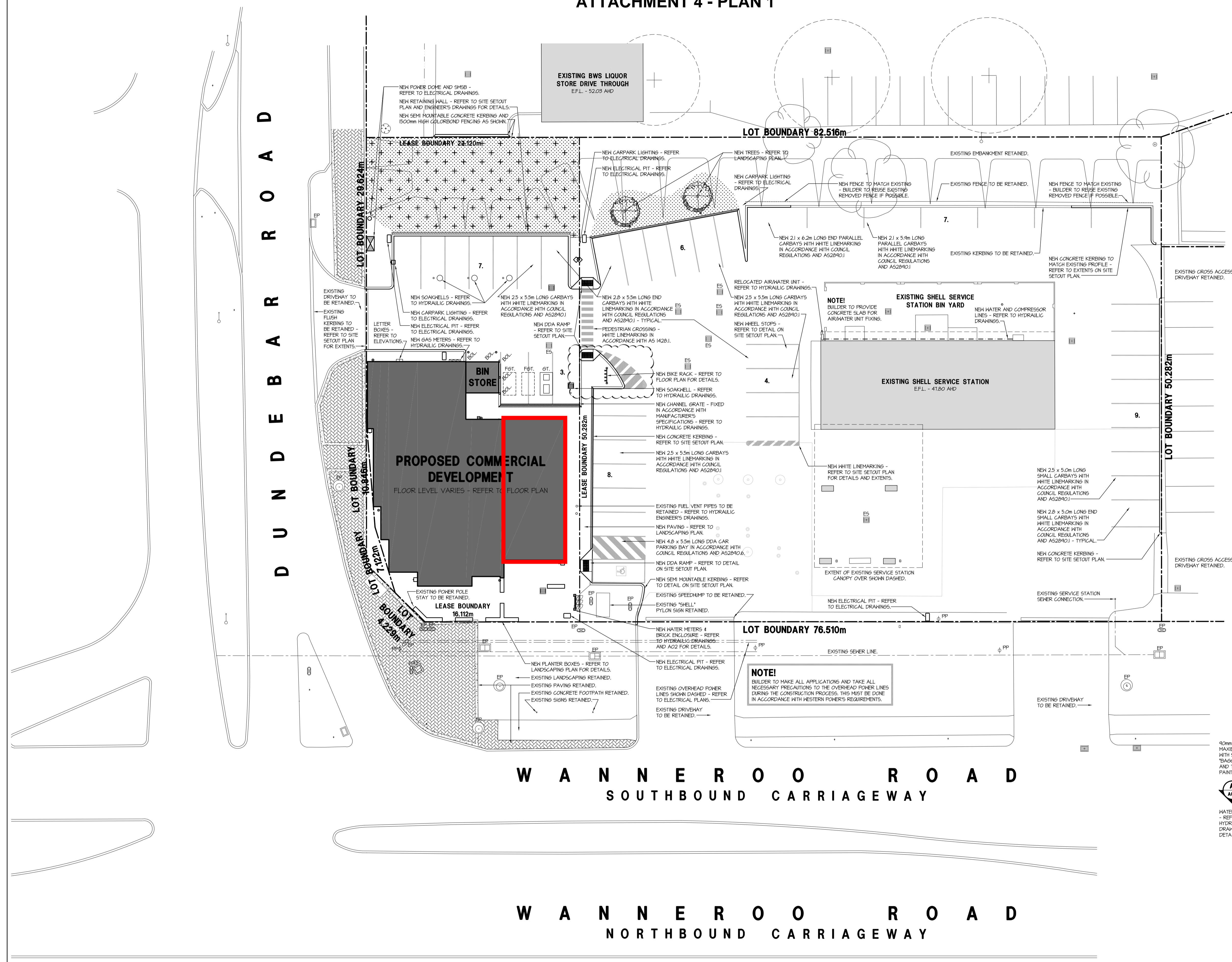
ATTACHMENT 4 - PLAN 1

LEGEND

- ES EXISTING SOAKWELL RETAINED - REFER TO HYDRAULIC DRAWINGS.
- EP EXISTING SERVICES PIT RETAINED - REFER TO HYDRAULIC AND ELECTRICAL DRAWINGS.
- FP EXISTING OVERHEAD POWER LINE POLE TO BE RETAINED - REFER TO ELECTRICAL DRAWINGS.
- GT NEW GREASE TRAP - REFER TO HYDRAULIC DRAWINGS FOR DETAILS.
- FGT FUTURE GREASE TRAP - REFER TO HYDRAULIC DRAWINGS FOR DETAILS.
- BOLL NEW BOLLARD - REFER TO DETAIL ON SITE OUT PLAN.

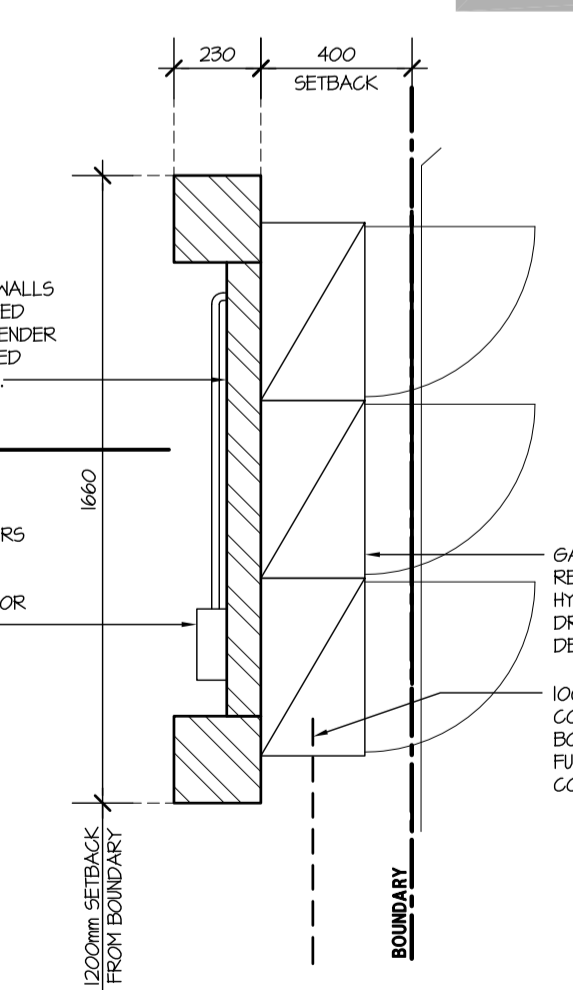
REVETMENT NOTE!

BUILDER TO PROVIDE "HYDROMULCH" REVETMENT AS NECESSARY TO ALLOW EXISTING EMBANKMENT TO REMAIN STABLE - ENSURE EMBANKMENT GRADE IS AT A 45° ANGLE AS A MAXIMUM AND THE "HYDROMULCH" IS APPLIED IN ACCORDANCE WITH MANUFACTURER'S SPECIFICATIONS. BUILDER TO ALLOW FOR A GREEN DYE ADDITIVE TO "HYDROMULCH" MIXTURE.

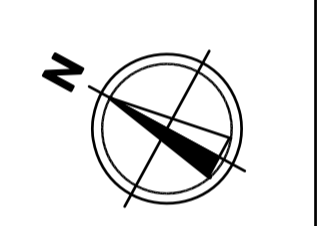


SECTION A
SCALE 1:20

PAINT FINISH NOTE!
DULUX 'TRON' TO MATCH COLORBOND FINISH - LOW GREEN. PAINT TO HAVE TEXTURED FINISH. PAINT CODE - CBS



WATER METER ENCLOSURE
SCALE 1:20



HINDLEY & ASSOCIATES
PTY LTD
BUILDING DESIGNERS

166 STIRLING HIGHWAY
NEDLANDS WA 6009

PO BOX 199
NEDLANDS WA 6009

PHONE - 9386 6699
FAX - 9386 6700
admin@hindley.com.au

CONSTRUCTION ISSUE

THIS DRAWING IS COPYRIGHT AND MUST NOT BE RETAINED, COPIED OR USED WITHOUT THE AUTHORITY OF HINDLEY & ASSOCIATES PTY LTD. DO NOT SCALE FROM THIS DRAWING.

THE CONTRACTOR AND HIS SUBCONTRACTORS ARE TO VERIFY ALL DIMENSIONS ON SITE BEFORE MAKING SHOP DRAWINGS OR COMMENCING MANUFACTURE.

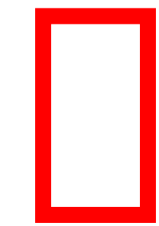
THIS IS A COMPUTER GENERATED DRAWING AND SHALL NOT BE ALTERED BY HAND.

HINDLEY & ASSOCIATES PTY LTD
AS TRUSTEE FOR
HINDLEY TRUST
ACN No. 088 989 904

NO:	DATE:	REVISION:	DRAWN:	CHECK:
A	29.02.12	BUILDING LICENCE ISSUE	CPH	SDS
B	14.03.12	TENDER ISSUE	CPH	SDS
0	20.06.12	CONSTRUCTION ISSUE	CPH	SDS
1	31.10.12	WATER METER WALL ALTERED	CPH	SDS
2	28.11.12	END CARBAY ISLAND ALTERED	CPH	SDS

A1 SHEET

SITE PLAN
SCALE 1:200



TENANCY 1 SUBJECT TO CHANGE OF USE APPLICATION FROM 'SHOP' TO 'RESTRICTED PREMISES'

PROPOSED BUSINESS DEVELOPMENT
PORTION LOT 70, CNR. WANNEROO
& DUNDEBAR ROADS, WANNEROO
for DRIVELINE HOLDINGS Pty Ltd.

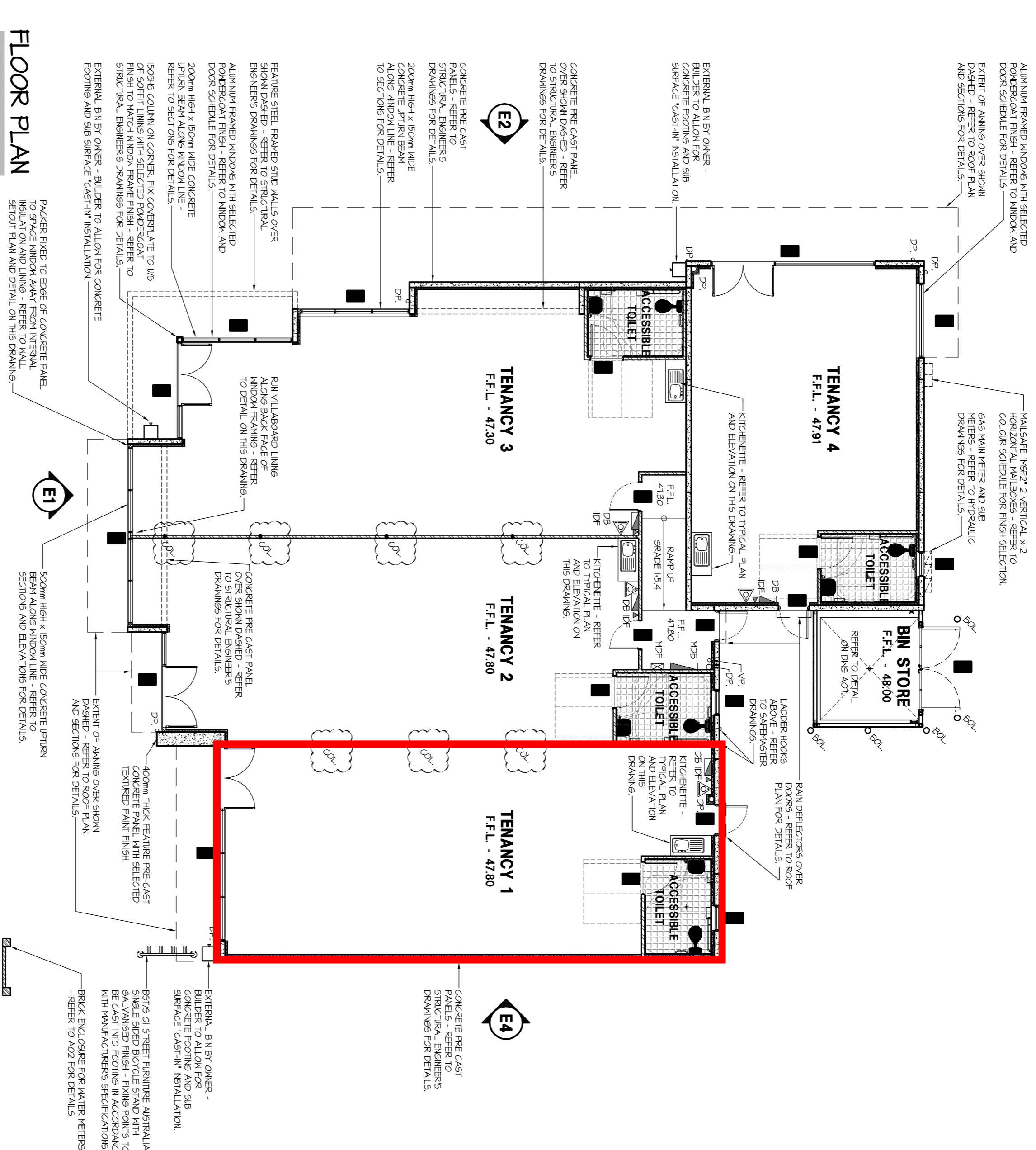
Date - 29.02.12
Design - SUH
Drawn - CPH
Checked - SDS
Scale - 1:200
Job No. - 0105
Dwg - A02
Rev - 2

ATTACHMENT 4 - PLAN 2

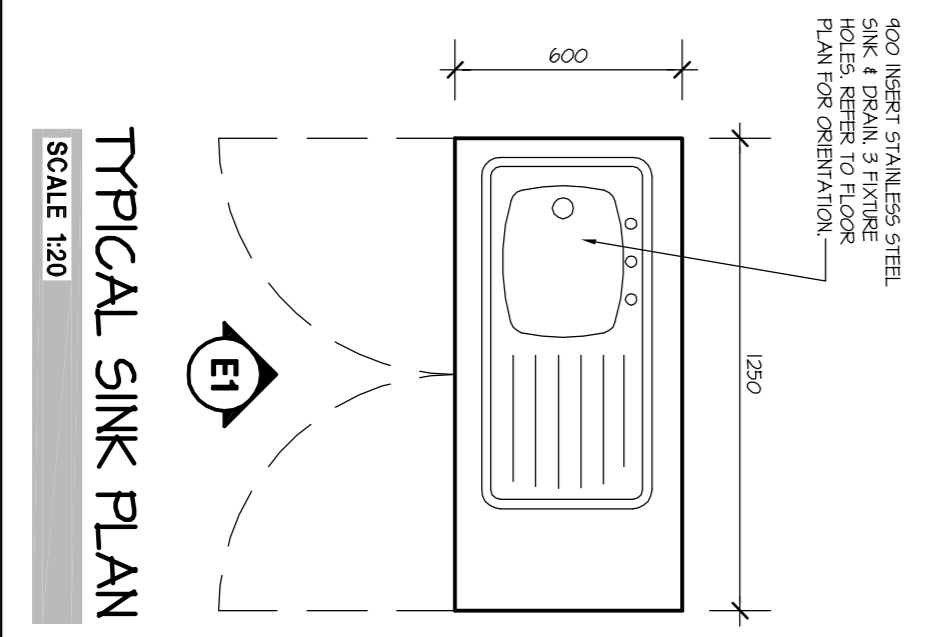
TENANCY 1 SUBJECT TO CHANGE OF USE APPLICATION FROM 'SHOP' TO 'RESTRICTED PREMISES'

LEGEND

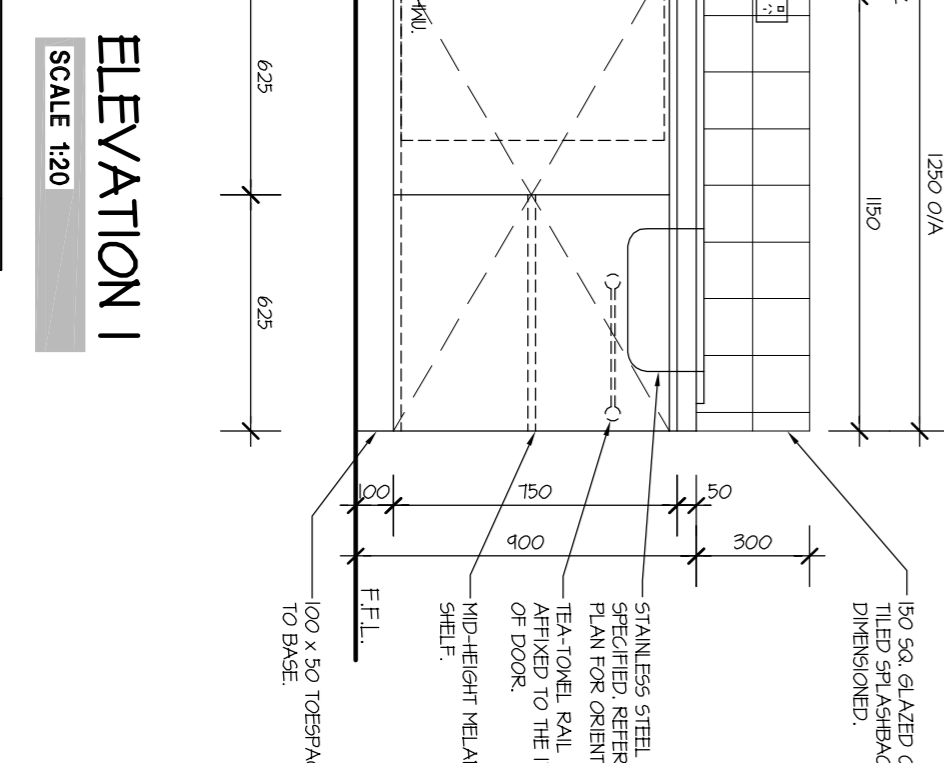
- DB DISTRIBUTION BOARD - REFER TO ELECTRICAL ENGINEER'S DRAWINGS FOR DETAILS.
- DF INDIVIDUAL DISTRIBUTION FRAME - REFER TO ELECTRICAL ENGINEER'S DRAWINGS FOR DETAILS.
- COLM - REFER TO STRUCTURAL ENGINEER'S DRAWINGS FOR SIZE AND CONNECTION DETAILS.
- BOLLARD - REFER TO ARCHITECTURAL DRAWINGS FOR DETAILS.
- SELECTED FINISH - REFER TO ROOM FINISH SCHEDULE FOR FINISH SELECTION.
- FINISHES - REFER TO FINISH SCHEDULE FOR FINISH SELECTION.
- FIRE EXTINGUISHER - REFER TO FIRE EXTINGUISHER SPECIFICATION FOR SELECTION.



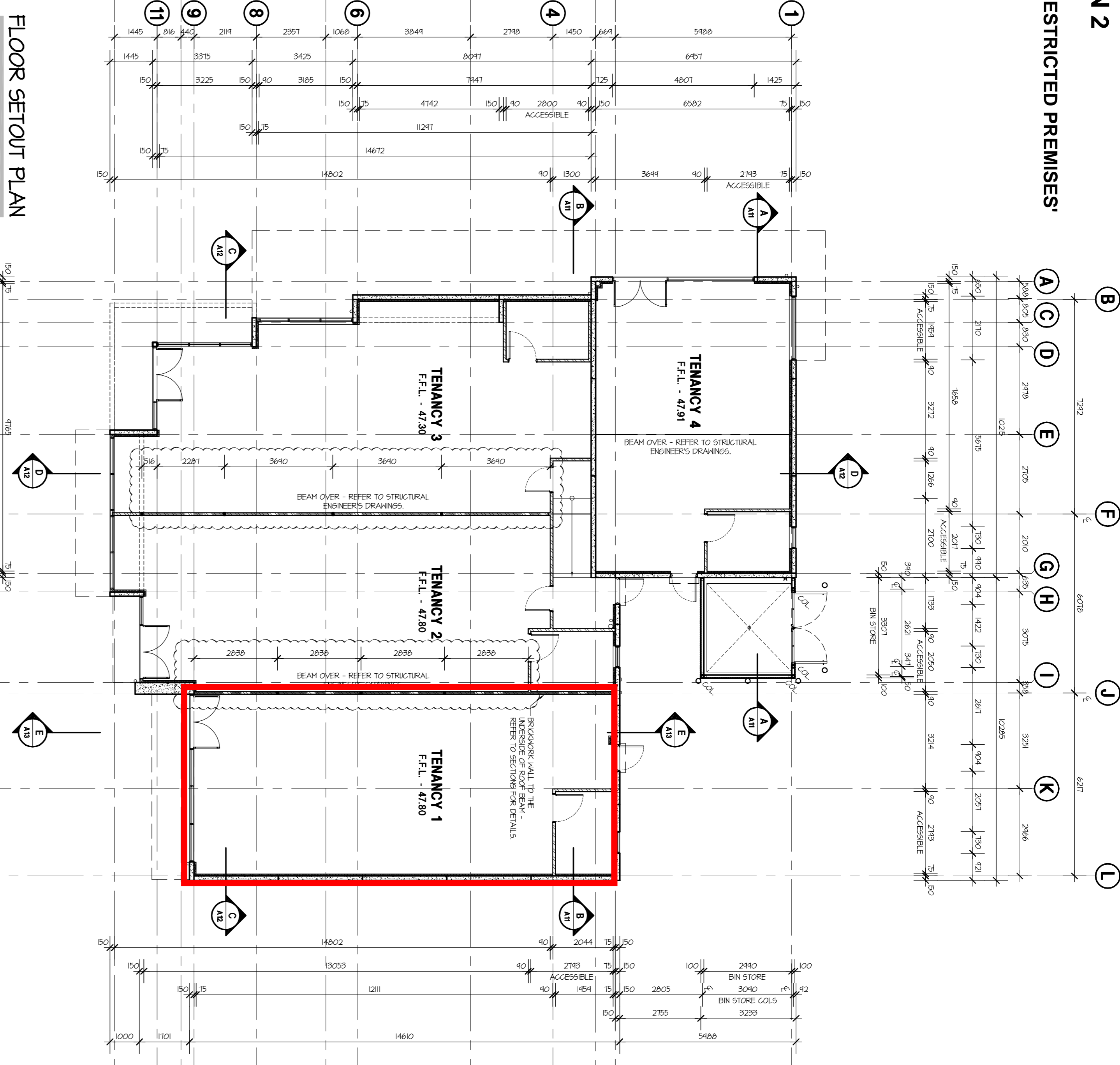
FLOOR PLAN
SCALE 1:100



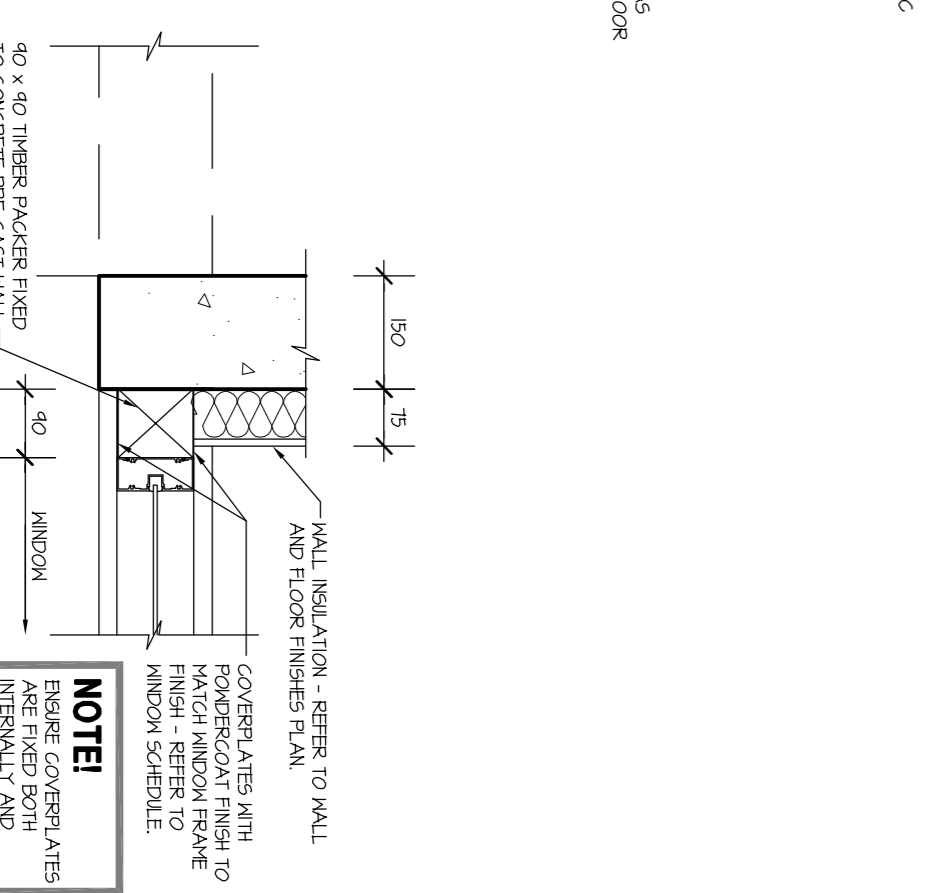
TYPICAL SINK PLAN
SCALE 1:20



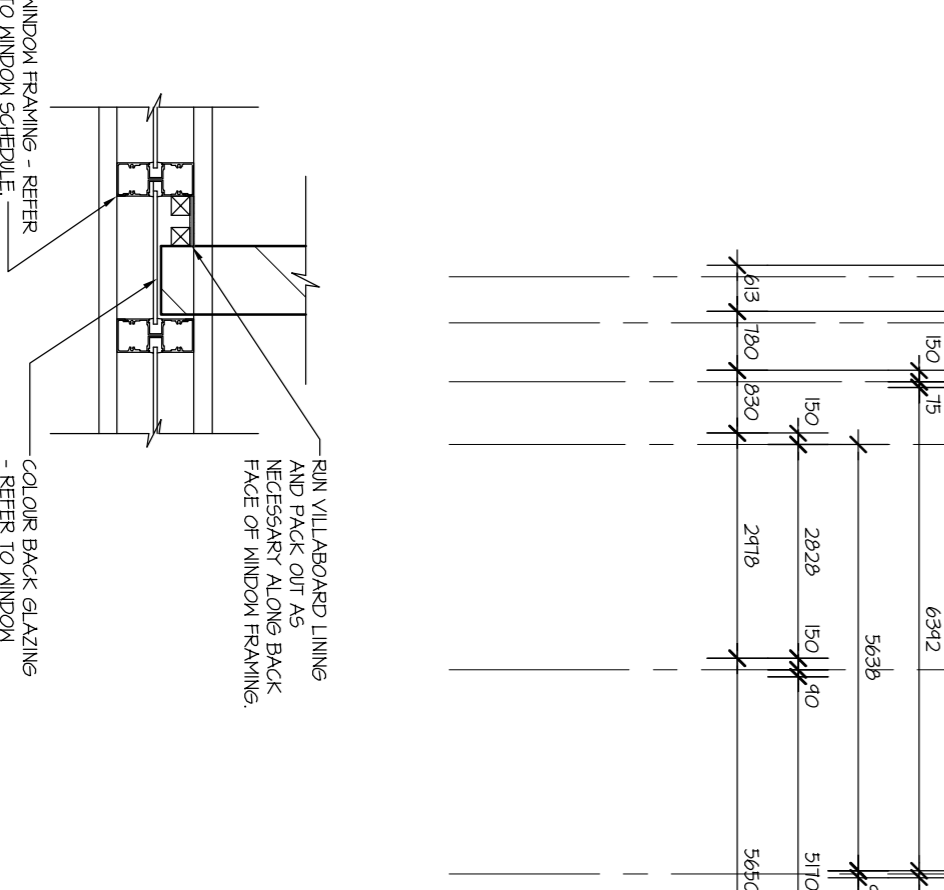
ELEVATION I
SCALE 1:20



FLOOR SETOUT PLAN
SCALE 1:100



WINDOW PACKER DETAIL
SCALE 1:10



WINDOW LINING DETAIL
SCALE 1:10

CONSTRUCTION ISSUE

NO. DATE REVISION:

1	29.02.12	BUILDING LICENCE ISSUE
2	14.03.12	TENDER ISSUE
3	20.08.12	CONSTRUCTION ISSUE
4	22.08.12	WALL COLUMNS ALTERED

DRAWN: CHECK:

CPH	SDS
CPH	SDS
CPH	SDS
CPH	SDS

DATE: 29.02.12

A1 SHEET

HINDLEY & ASSOCIATES PTY LTD
AS TUSTEE FOR
HINDLEY TRUST
ACN NO. 088 998 904

THIS DRAWING IS COPYRIGHT AND MUST NOT BE REPRODUCED OR USED WITHOUT THE WRITTEN PERMISSION OF HINDLEY & ASSOCIATES PTY LTD. DO NOT SCALE FROM THIS DRAWING.

THE CONTRACTOR AND HIS SUBCONTRACTORS ARE RESPONSIBLE FOR CHECKING ALL DIMENSIONS AND SPECIFICATIONS OF WORK AND TO VERIFY THAT ALL DIMENSIONS AND SPECIFICATIONS SHOWN ON THIS DRAWING SHALL NOT BE ALTERED BY HAND.

PROPOSED BUSINESS DEVELOPMENT
PORTION LOT 70, CNR. WANNEROO & DUNDEBAR ROADS, WANNEROO
for DRIVELINE HOLDINGS Pty Ltd.

Date: 29.02.12

Design: CPH

Checked: AS SDS

Scale: AS SHOWN

Dwg No.: A06

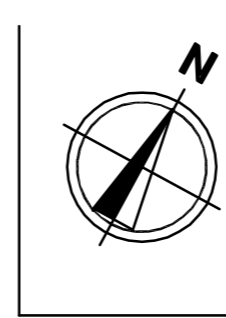
Rev.: 1

HINDLEY & ASSOCIATES
BUILDING DESIGNERS

188 STRUNG HIGHWAY
MELBURN VIC 3000
NEEDLANDS WA 8908

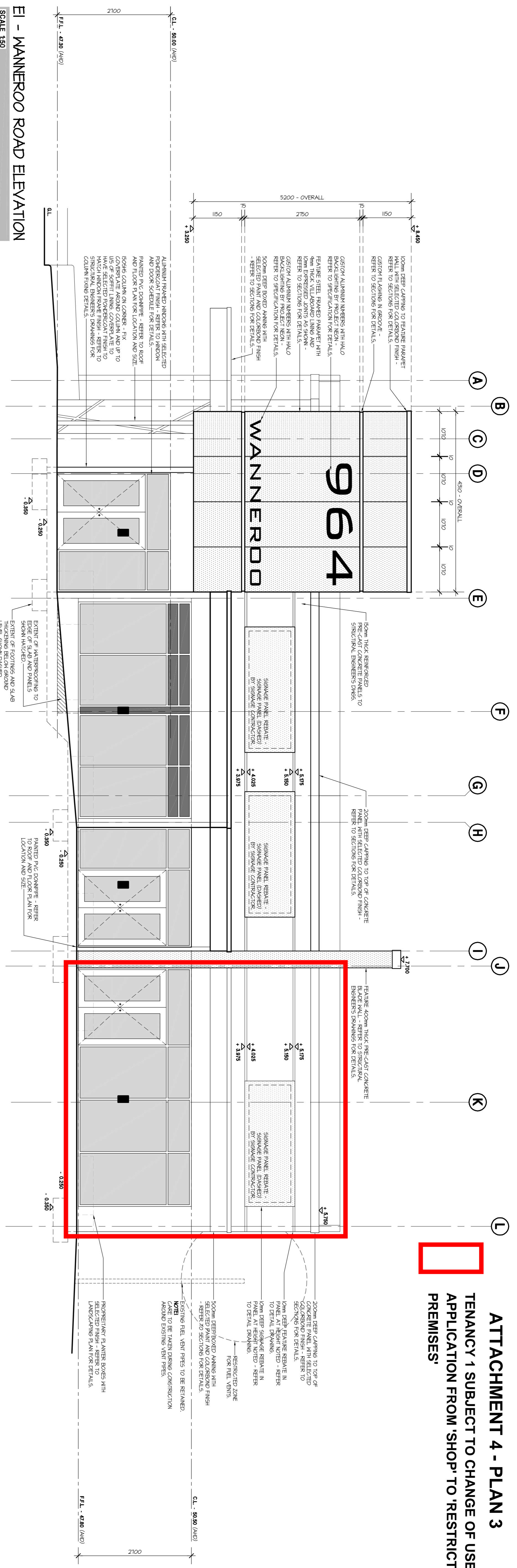
PO BOX 188
NEEDLANDS WA 8908

PHONE - 9386 6699
FAX - 9386 6700
admin@hindley.com.au

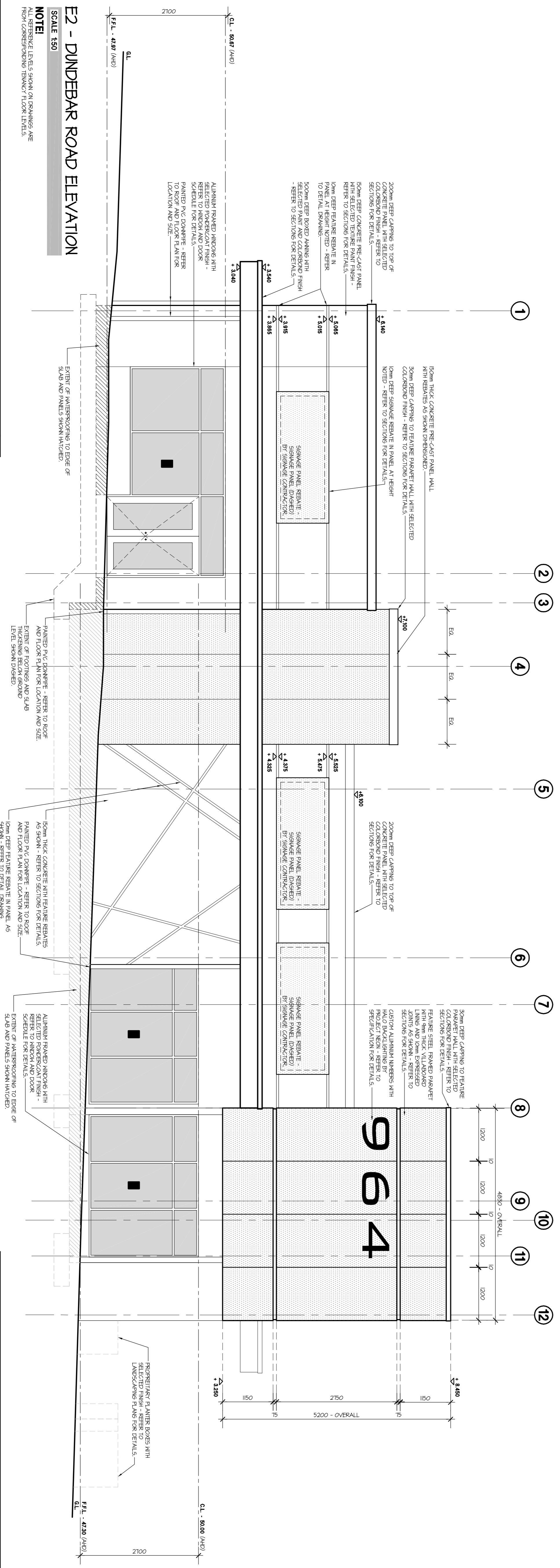


ATTACHMENT 4 - PLAN 3

TENANCY 1 SUBJECT TO CHANGE OF USE APPLICATION FROM 'SHOP' TO 'RESTRICTED PREMISES'



EI - WANNEROO ROAD ELEVATION
SCALE 1:50
NOTE: ALL REFERENCE LEVELS SHOWN ON DRAWINGS ARE FROM CORRESPONDING TENANCY FLOOR LEVELS.



E2 - DUNDEBAR ROAD ELEVATION
SCALE 1:50
NOTE: ALL REFERENCE LEVELS SHOWN ON DRAWINGS ARE FROM CORRESPONDING TENANCY FLOOR LEVELS.

NO.	DATE	REVISION	DRAWN	CHECK
A	28.02.12	BUILDING LICENCE ISSUE	CPH	SDS
B	14.03.12	TENDER ISSUE	CPH	SDS
0	20.08.12	CONSTRUCTION ISSUE	CPH	SDS

A1 SHEET

PROPOSED BUSINESS DEVELOPMENT PORTION LOT 70, CNR. WANNEROO & DUNDEBAR ROADS, WANNEROO for DRIVELINE HOLDINGS Pty Ltd.

Date	28.02.12
Design	CPH
Checked	SDS
Scale	1:50
Job No.	A09
Rev.	0

CONSTRUCTION ISSUE

HA
HINDLEY & ASSOCIATES
BUILDING DESIGNERS
188 STRUNG HIGHWAY
NEDLANDS WA 8109
PO BOX 188
NEDLANDS WA 8109
PHONE - 9386 6699
FAX - 9386 6700
admin@hindley.com.au