

Rev.	Amendment	Date
A	DA ISSUE	07/06/19
B	DA ISSUE	04/09/19
C	DA REVISION	02/10/19
D	REVIEW	24/10/19
E	REVIEW	29/10/19
F	DA ISSUE	04/11/19



01	COVER SHEET	F
02	SURVEY	F
03	OVERALL SITE PLAN	F
04	SITE PLAN PART 1	F
05	FLOOR PLAN PART 1	F
06	ELEVATIONS PART 1	F
08	SIGNAGE PLAN & SCHEDULE PART 1	F
09	SITE PLAN PART 2	F
10	FLOOR PLAN PART 2	F
11	ELEVATIONS PART 2	F
12	SIGNAGE PLAN & SCHEDULE PART 2	F
13	3D VIEWS	D

--- OVERALL DEVELOPMENT SITE  
 --- SUBJECT SITE

# BANKSIA GROVE

PROPOSED LOT 9190, PINJAR ROAD, BANKSIA GROVE

**BROWN  
FALCONER**

9/300 Rokeby Road, Subiaco, Western Australia  
 6004 Telephone: 08 9382 0303 Facsimile: 08  
 8223 2440 ABN 65 007 846 586  
 brownfalconer.com.au

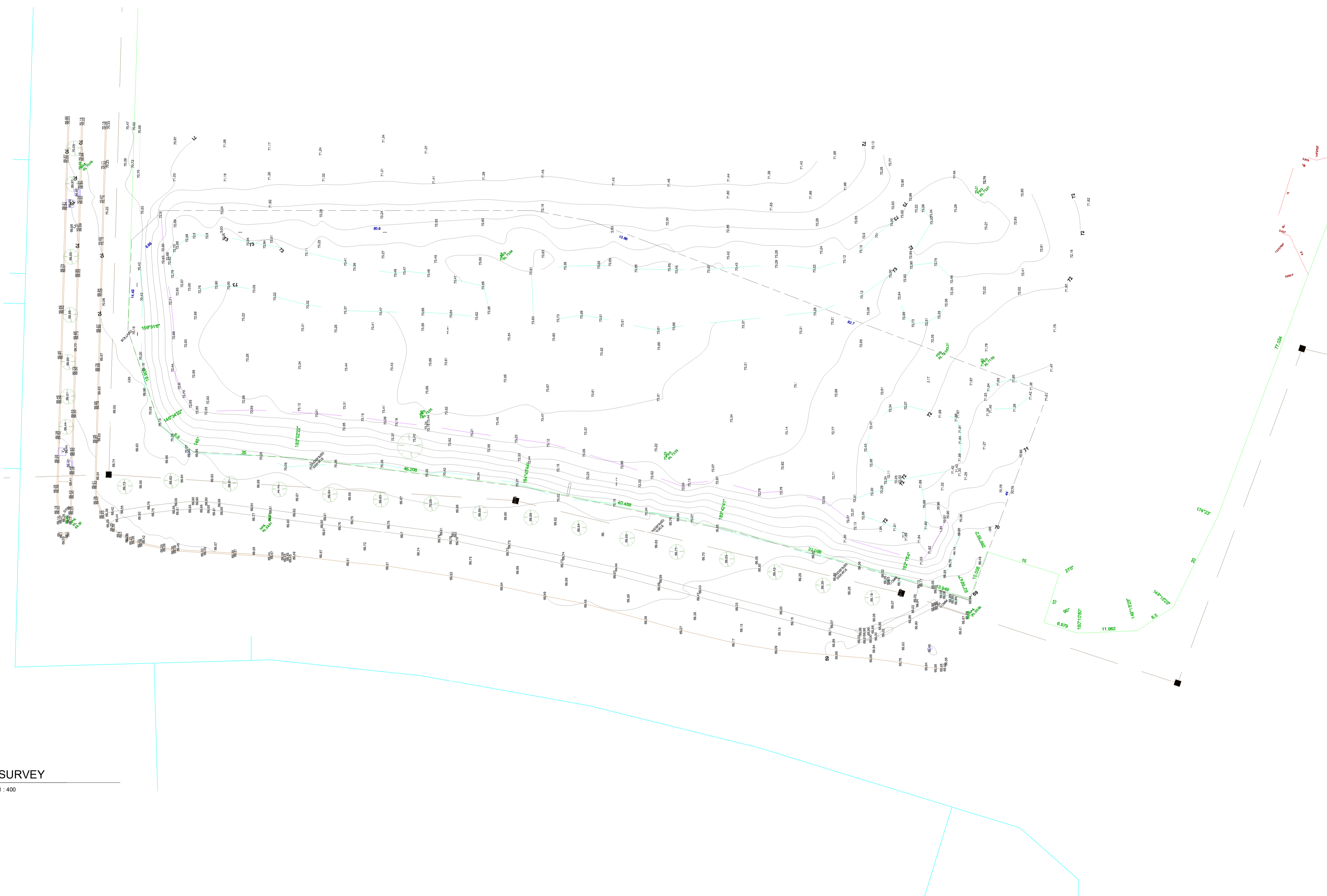
ACCORD PROPERTY

BANKSIA GROVE

COVER SHEET

Scale 1 : 2000  
 Drawn DC Checked MJ  
 Date 04/11/19  
 Job No. 2019028  
 Dwg No. 3283 01 Rev. F A1 SHEET

Rev.	Amendment	Date
A	DA ISSUE	07/08/19
B	DA ISSUE	04/08/19
C	DA REVISION	02/10/19
D	REVIEW	24/10/19
E	REVIEW	29/10/19



NOTE:  
THIS PLAN HAS BEEN PREPARED WITH  
3D VALUES AND APPROXIMATE PCG  
COORDINATES BASED FROM SEWER MANHOLES.

NOTE:  
APPROXIMATE AHD LEVEL DERIVED  
FROM SEWERAGE MANHOLE AD4747.

**WARNING!**  
BOUNDARY RE-ESTABLISHMENT SURVEY  
REQUIRED TO CONFIRM LOT BOUNDARY  
POSITION AND DIMENSIONS.

**33c 2 = EASEMENT  
(ELECTRICITY SUPPLY).  
BENEFIT TO THE ELECTRICITY  
NETWORKS CORPORATION.**

FOR FURTHER INFORMATION  
RELATING TO EASEMENTS ON LOT 9193  
SEE DEPOSITED PLAN 416765.

THE BOUNDARY DIMENSIONS OF THE  
PROPOSED LOT NEED TO BE VERIFIED.

THE PROPOSED BOUNDARY INFORMATION  
SHOWN ON THIS PLAN WAS OBTAINED  
FROM THE PRELIMINARY SITE PLAN (A)  
3283-03 PREPARED BY BROWN FALCONER.

THIS PLAN HAS YET TO BE APPROVED BY  
LANDGATE AND IS SUBJECT TO CHANGE.

**SERVICE LEGEND**

DRAINAGE				
COMBO PIT				
GRATE				
SIDE ENTRY PIT				
STORM WATER MANHOLE				
ELECTRICITY				
CABLE DOME				
CABLE MANHOLE				
CABLE PIT				
CONSUMER POLE				
LIGHT POLE				
POWER POLE				
STAY POLE				
STAY WIRE ANCHOR				
OH POWER LINE				
GAS				
GAS MANHOLE				
GAS MARKER				
GAS METER				
GAS VALVE				
SEWERAGE				
SEWER MANHOLE				
PROPERTY CONNECTION				
SEWER LINE				
TELECOMMUNICATION				
TEL / COMMS MANHOLE				
TEL / COMMS MARKER				
TEL / COMMS PIT				
WATER				
FLUSH POINT				
HYDRANT				
STOP VALVE				
TAP				
WATER MARKER				
WATER METER				
WATER LINE				
SURVEY				
DATUM				
PEG FOUND				
OTHER				
AWNING / EAVES				
ROOF RIDGE				
FLOOR RL				
WINDOW / DOOR				
BANK - BOTTOM				
BANK - TOP				
SERVICE RECORD				
STATUS				
SERVICE	LOCATED	AVAILABLE	NO SERVICE	CONFIRM
WATER				
SEWERAGE				
GAS				
TEL / COMM				
POWER				
OH				
SERVICES MARKERS CONFIRM RECORDING BUILDER / CLIENT TO CONFIRM POSITION AND / OR AVAILABILITY ON SITE.				

SURVEY

1:400

NOTE: SURVEY PREPARED BY  
LAND SURVEYS



9/300 Rokeby Road, Subiaco, Western Australia  
6004 Telephone : 08 6382 0303 Facsimile : 08  
6223 2440 ABN 65 007 846 586  
brownfalconer.com.au

ACCORD PROPERTY

BANKSIA GROVE

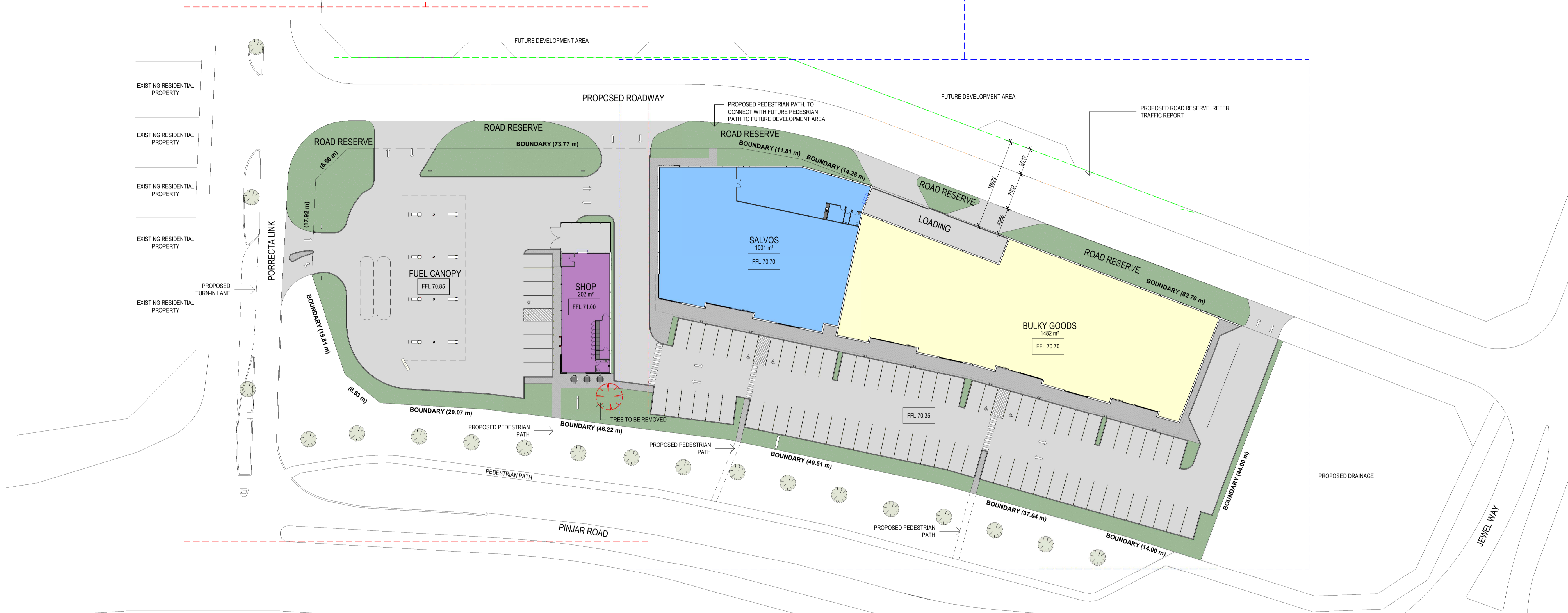
SURVEY

Scale As indicated  
Drawn - Checked -  
Date 29/10/19  
Job No. 2019028  
Dwg No. 3283 02 Rev: E A1 SHEET

Rev.	Amendment	Date
A	DA ISSUE	07/08/19
B	DA ISSUE	04/09/19
C	DA REVISION	02/10/19
D	REVIEW	24/10/19
E	REVIEW	29/10/19
F	DA ISSUE	04/11/19

**PART 1**  
DWGS 03-08

**PART 2**  
DWGS 09-12



**OVERALL SITE PLAN**

1:400

SITE AREA	8755m <sup>2</sup>
LANDSCAPE AREA	1088m <sup>2</sup>

**BROWN FALCONER**

9/300 Rokeby Road, Subiaco, Western Australia  
6004 Telephone: 08 9382 0303 Facsimile: 08 9223 2440 ABN 65 007 846 566  
brownfalconer.com.au

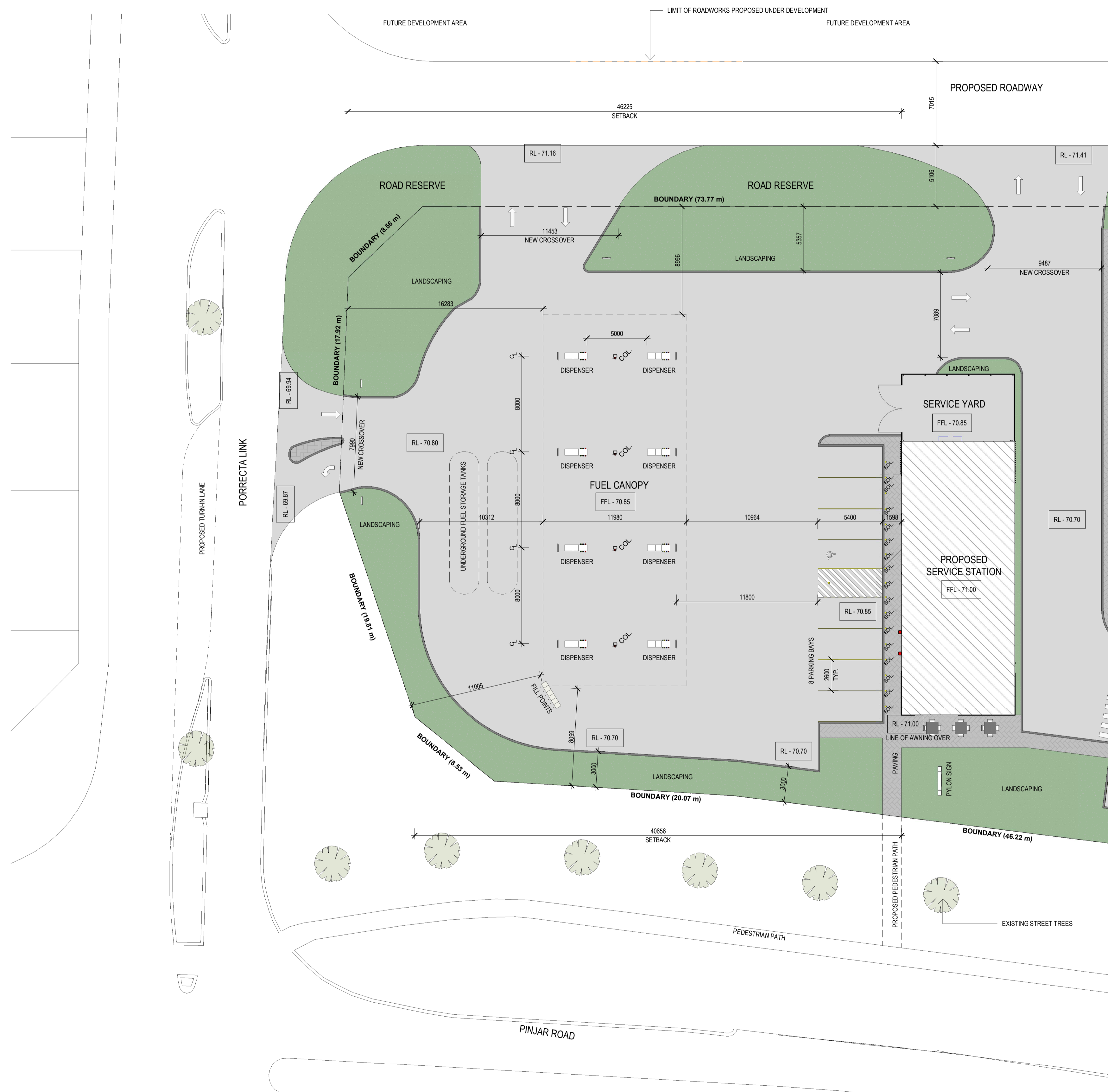
ACCORD PROPERTY

BANKSIA GROVE

OVERALL SITE PLAN

Scale	As indicated
Drawn	DC Checked MJ
Date	04/11/19
Job No.	2019028
Dwg No.	3283 03
Rev.	F A1 SHEET

Rev.	Amendment	Date
A	DA ISSUE	07/08/19
B	DA ISSUE	04/09/19
C	DA REVISION	02/10/19
D	REVIEW	24/10/19
E	REVIEW	29/10/19
F	DA ISSUE	04/11/19



SITE PLAN PART 1

1 : 200

DRAWING CONTINUES ON 3283 09



9/300 Rokeby Road, Subiaco, Western Australia  
 6004 Telephone : 08 9382 0303 Facsimile : 08 9223 2440 ABN 65 007 846 566  
 brownfalconer.com.au

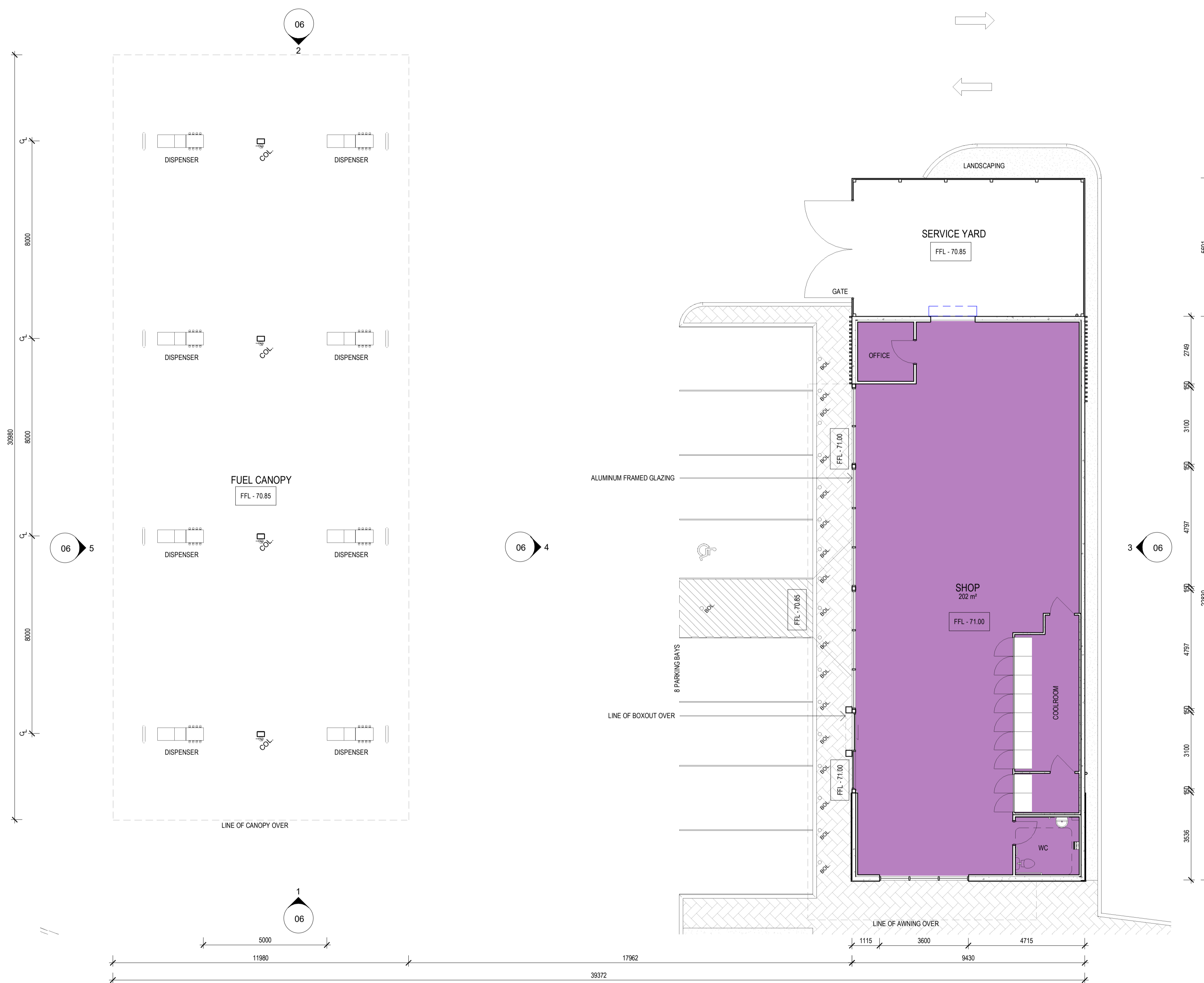
ACCORD PROPERTY

BANKSIA GROVE

SITE PLAN PART 1

Scale 1 : 200  
 Drawn DC Checked MJ  
 Date 04/11/19  
 Job No. 2019028  
 Dwg No. 3283 04 Rev. F A1 SHEET

Rev.	Amendment	Date
A	DA ISSUE	07/08/19
B	DA ISSUE	04/09/19
C	DA REVISION	02/10/19
D	REVIEW	24/10/19
E	REVIEW	28/10/19
F	DA ISSUE	04/11/19



FLOOR PLAN PART 1  
1 : 100

**BROWN FALCONER**

9/300 Rokeby Road, Subiaco, Western Australia  
6004 Telephone : 08 9382 0303 Facsimile : 08 8223 2440 ABN 65 007 846 566  
brownfalconer.com.au

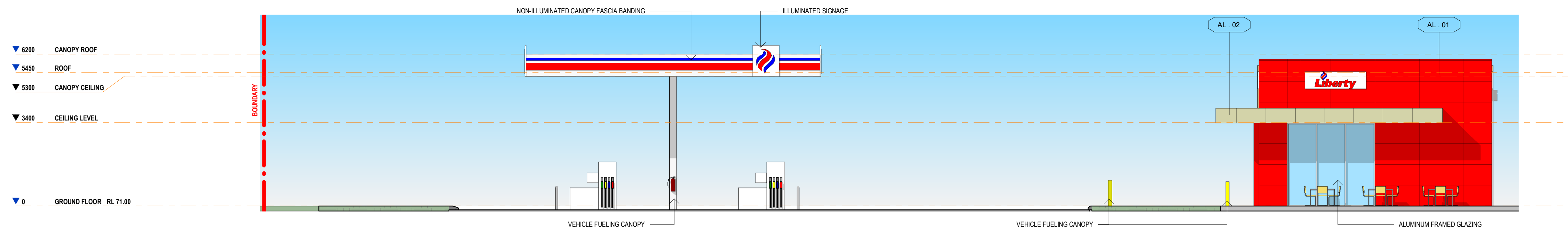
ACCORD PROPERTY

BANKSIA GROVE

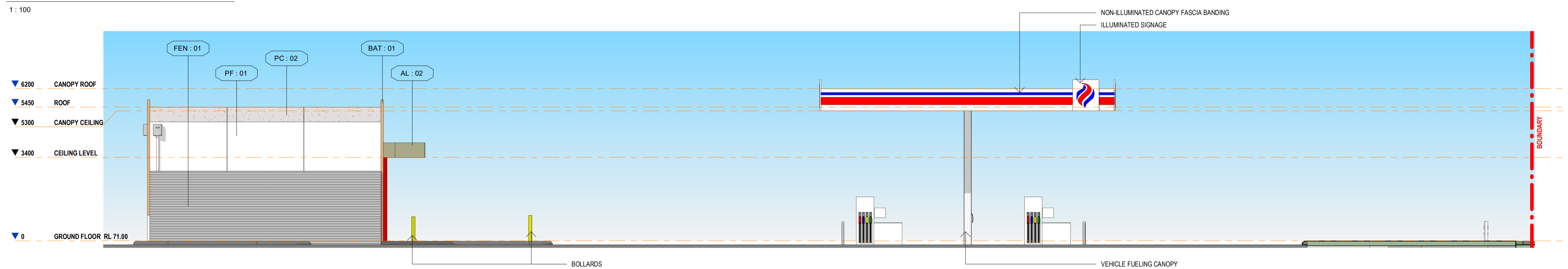
FLOOR PLAN PART 1

Scale 1 : 100  
Drawn DC Checked MJ  
Date 04/11/19  
Job No. 2019028  
Dwg No. 3283 05 Rev. F A1 SHEET

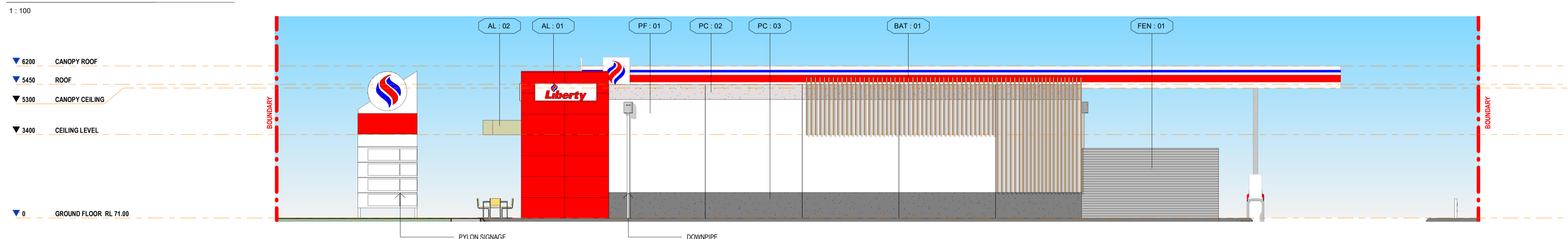
Rev.	Amendment	Date
A	DA ISSUE	07/08/19
B	DA ISSUE	04/09/19
C	DA REVISION	02/10/19
D	REVIEW	24/10/19
E	REVIEW	29/10/19
F	DA ISSUE	04/11/19



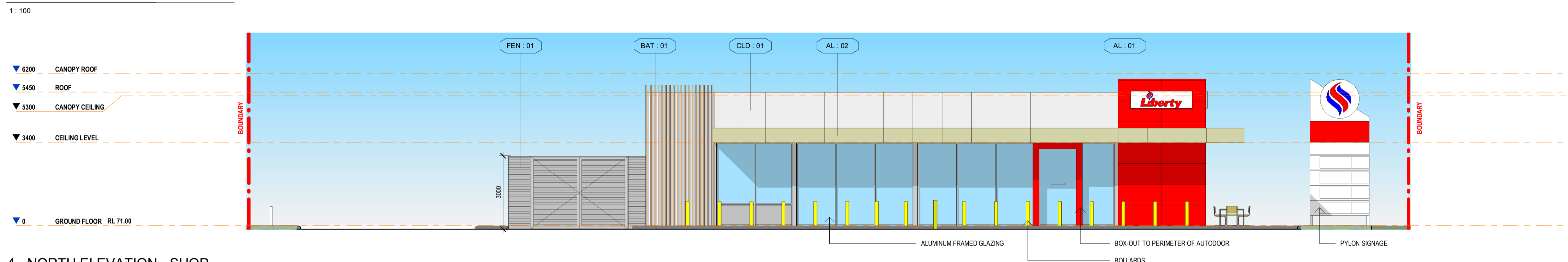
1 - WEST ELEVATION



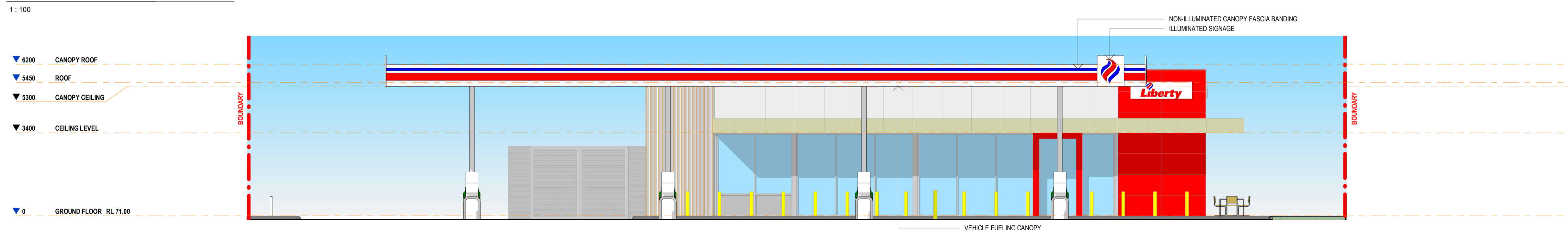
2 - EAST ELEVATION



3 - SOUTH ELEVATION



4 - NORTH ELEVATION - SHOP



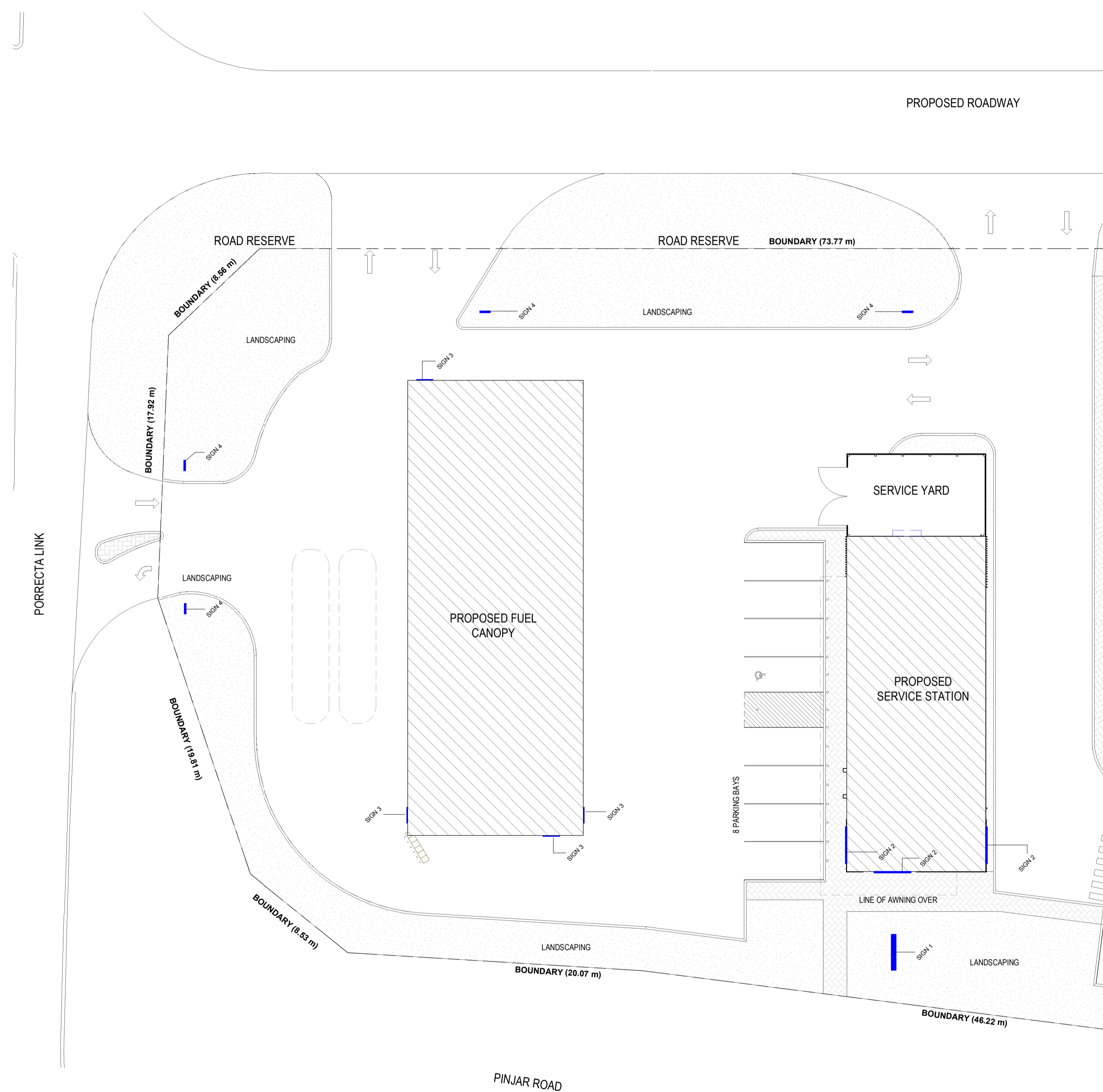
5 - NORTH ELEVATION - CANOPY

FINISHES LEGEND

- AL : 01 3mm PRE-FINISHED ALUMINUM PANELLING 'RED'
- AL : 02 3mm PRE-FINISHED ALUMINUM PANELLING 'CHAMPAGNE METALLIC'
- PC : 02 HONED PRECAST 'LIGHT'
- PC : 03 HONED PRECAST 'DARK'
- PF : 01 PRECAST, PAINT FINISH 'WHITE'
- CLD : 01 EXPRESSED JOINT OFC. PAINT FINISH - TBC.
- BAT : 01 INNOVWOOD BATTENS TIMBER OR TIMBER LOOK CEDAR
- FEN : 01 3000H COLORBOND FENCING 'WOODLAND GREY' TO ACOUSTIC REPORT REQUIREMENTS

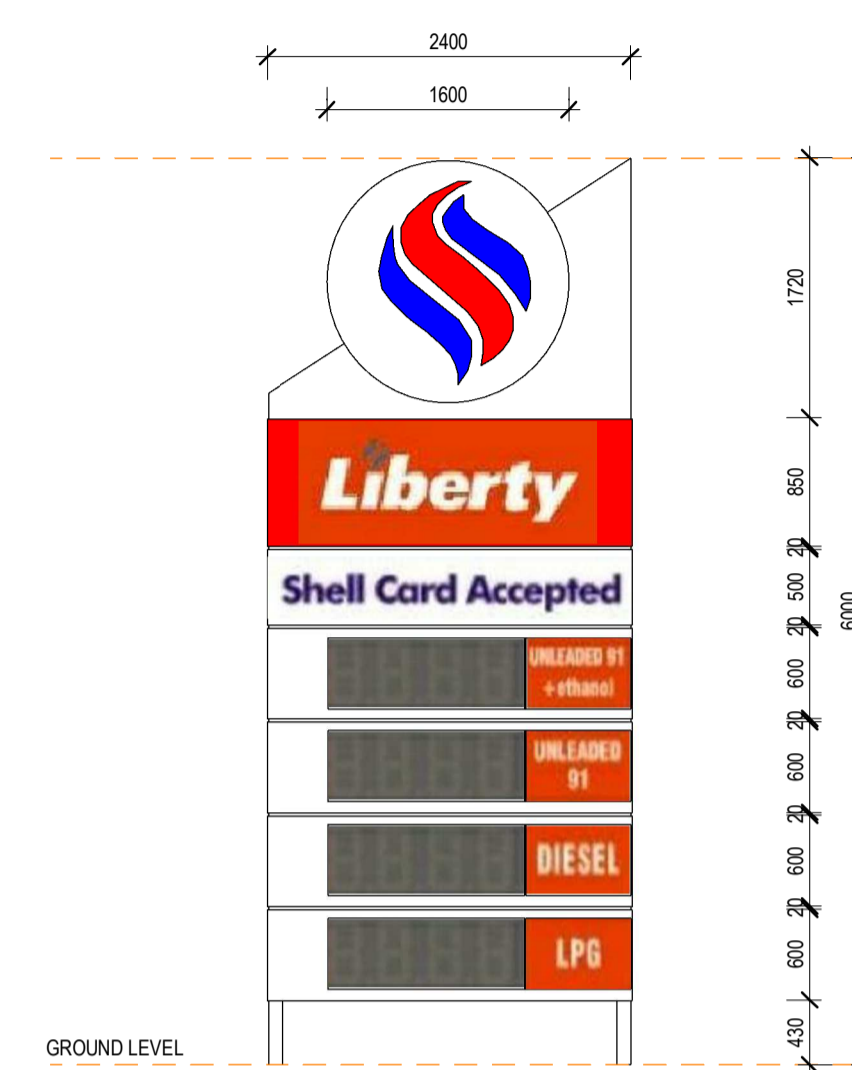
NOTE: FORECOURT CANOPY OFC CLADDING TO BE PAINTED TO SUIT OPERATORS BRANDING

Rev.	Amendment	Date
A	DA ISSUE	07/08/19
B	DA ISSUE	04/09/19
C	DA REVISION	02/10/19
D	REVIEW	24/10/19
E	REVIEW	29/10/19
F	DA ISSUE	04/11/19



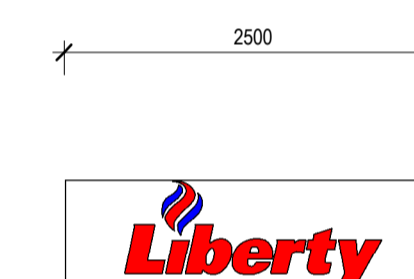
SIGNAGE PLAN

1 : 200



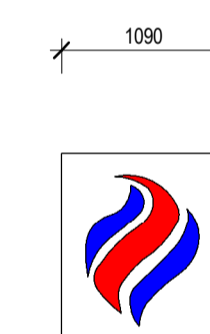
SIGN 1 - PYLON SIGN

SCALE 1:50 @ A1  
INTERNALLY ILLUMINATED



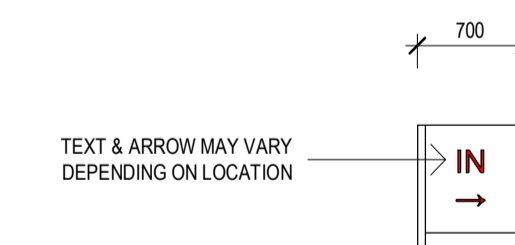
SIGN 2 - SHOP

SCALE 1:50 @ A1  
INTERNALLY ILLUMINATED



SIGN 3 - CANOPY

SCALE 1:50 @ A1  
INTERNALLY ILLUMINATED



SIGN 4 - DIRECTIONAL

SCALE 1:50 @ A1  
NON-ILLUMINATED

TEXT & ARROW MAY VARY  
DEPENDING ON LOCATION

**BROWN FALCONER**

9/300 Rokeby Road, Subiaco, Western Australia  
 6004 Telephone : 08 6382 0303 Facsimile : 08 6223 2440 ABN 65 007 846 566  
 brownfalconer.com.au

ACCORD PROPERTY

BANKSIA GROVE

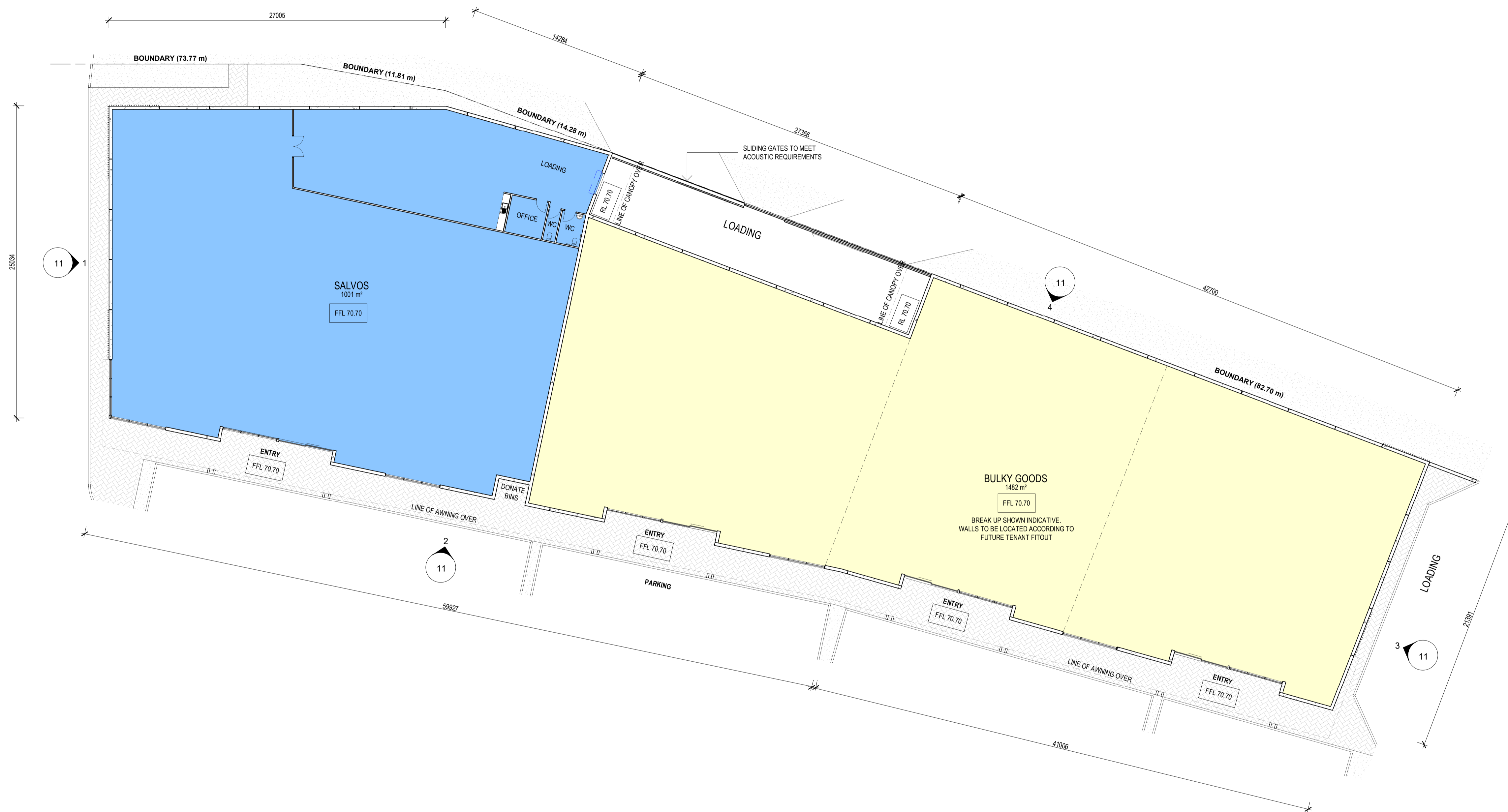
SIGNAGE PLAN & SCHEDULE PART 1

Scale As indicated  
 Drawn DC Checked MJ  
 Date 04/11/19  
 Job No. 2019028  
 Dwg No. 3283 08 Rev: F A1 SHEET





Rev.	Amendment	Date
A	DA ISSUE	07/08/19
B	DA ISSUE	04/09/19
C	DA REVISION	02/10/19
D	REVIEW	24/10/19
E	REVIEW	28/10/19
F	DA ISSUE	04/11/19



FLOOR PLAN PART 2

1 : 200

**BROWN FALCONER**

9/300 Rokeby Road, Subiaco, Western Australia  
 6004 Telephone : 08 9382 0303 Facsimile : 08 9223 2440 ABN 65 007 846 566  
 brownfalconer.com.au

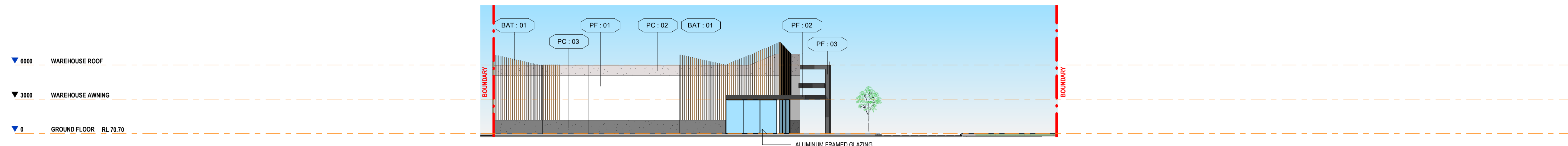
ACCORD PROPERTY

BANKSIA GROVE

FLOOR PLAN PART 2

Scale 1 : 200  
 Drawn DC Checked MJ  
 Date 04/11/19  
 Job No. 2019028  
 Dwg No. 3283 10 Rev: F A1 SHEET

Rev.	Amendment	Date
A	DA ISSUE	07/08/19
B	DA ISSUE	04/09/19
C	DA REVISION	02/10/19
D	REVIEW	24/10/19
E	REVIEW	29/10/19
F	DA ISSUE	04/11/19

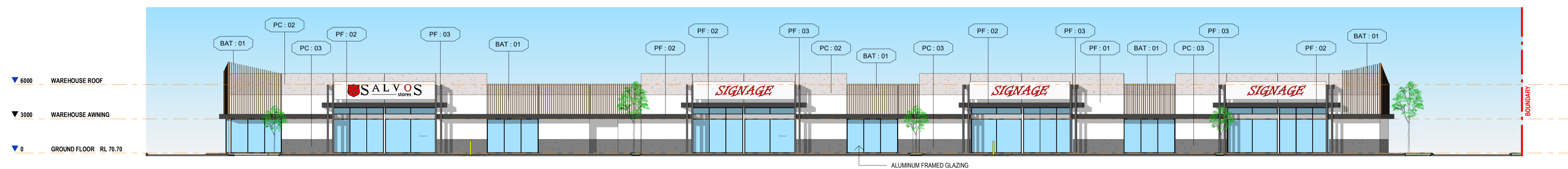


1 - NORTH ELEVATION

1 : 200

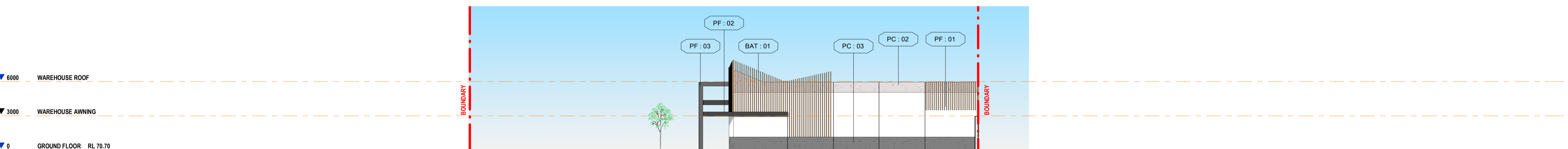
FINISHES LEGEND

- PC : 02 HONED PRECAST 'LIGHT'
- PC : 03 HONED PRECAST 'DARK'
- PF : 01 PRECAST PAINT FINISH 'WHITE'
- PF : 02 STEEL FASCIA PAINT FINISH 'BLACK'
- PF : 03 STEEL PAINT FINISH 'CHARCOAL'
- BAT : 01 INNOWOOD BATTERS TIMBER OR TIMBER LOOK CEDAR



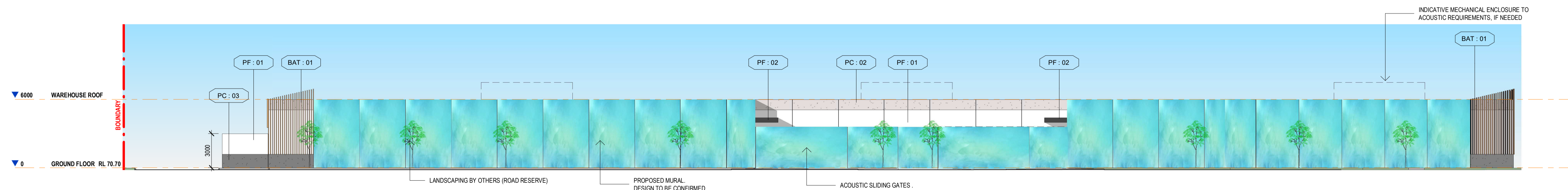
2 - WEST ELEVATION

1 : 200



3 - SOUTH ELEVATION

1 : 200



4 - EAST ELEVATION

1 : 200

**BROWN FALCONER**

9/300 Rokeby Road, Subiaco, Western Australia  
6004 Telephone : 08 6382 0303 Facsimile : 08 8223 2440 ABN 65 007 846 586  
brownfalconer.com.au

ACCORD PROPERTY

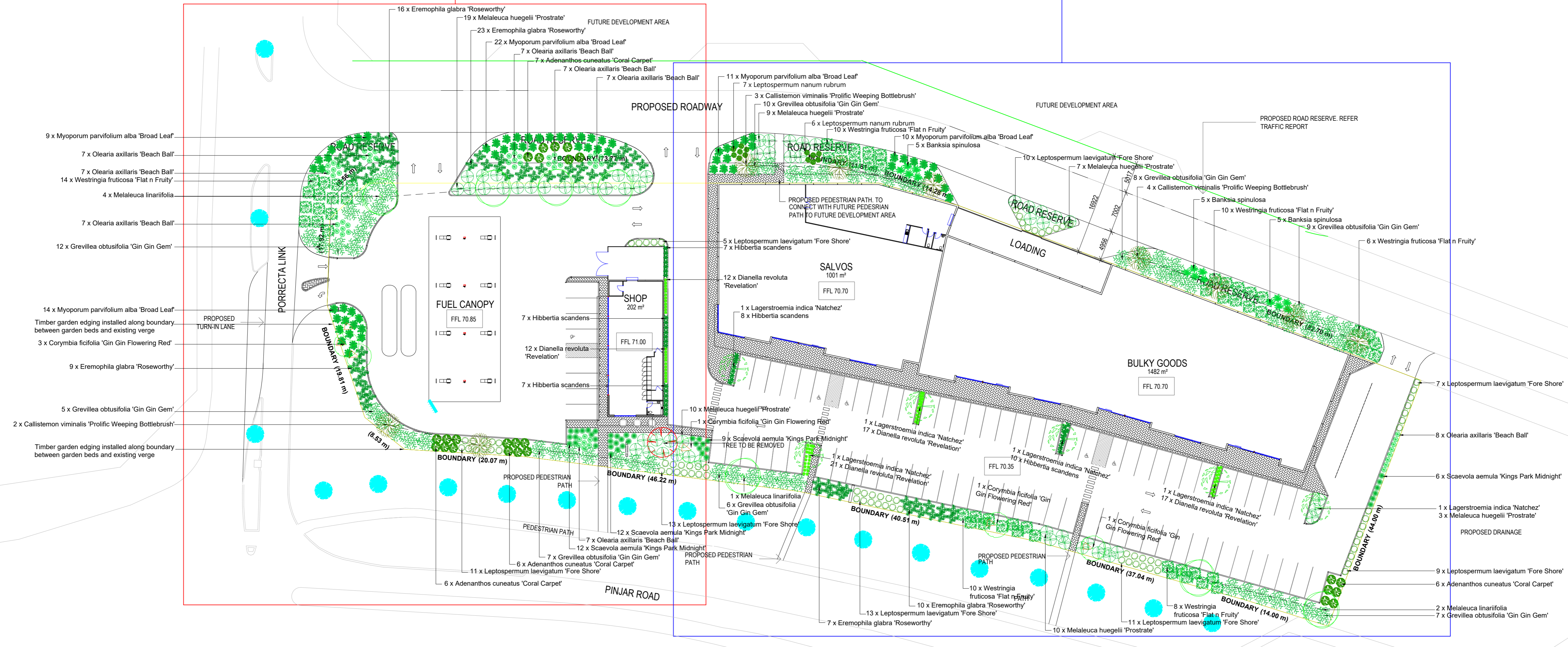
BANKSIA GROVE

ELEVATIONS PART 2

Scale As indicated  
Drawn DC Checked MJ  
Date 04/11/19  
Job No. 2019028  
Dwg No. 3283 11 Rev: F A1 SHEET

**PART 1**  
DWGS 03-08

**PART 2**  
DWGS 09-12



**DISCLAIMER**  
All symbols and elements depicted in this plan are artistic representations to illustrate conceptual ideas and are subject to approval by the relevant professionals or authority.  
  
It is the client's responsibility to ensure the required certifications, licenses and approvals are held prior to installation. Levels and measurements must be checked on site prior to construction.  
  
This drawing is copyright protected and remains the property of Urban Retreat Garden Design

**CLIENT**  
Accord Property Group  
  
**PROJECT**  
Proposed Development  
Lot 9190 Pinjar Road,  
Banksia Grove



**DRAWING** Landscape Plan  
  
**DATE** 07.11.2019  
**PROJECT NUMBER** 19113  
**REVISION** 04  
**DESIGNER** Amelia Coleman  
  
Scale 1:400 @ A1

**NOTES**  
Page 1 of 3  
See page 2 for Plant Schedule  
See page 3 for Planting and Edging Detail  
All planting areas to be mulched to a depth of 75mm. Mulch is pine bark wood chips.  
Garden bed edging is pegged-in treated pine - see page 2 for edging detail.



COMMERCIAL AND RESIDENTIAL  
LANDSCAPE DESIGN SERVICES  
[www.urbanretreatgardens.com.au](http://www.urbanretreatgardens.com.au)  
E: [amelia@urbanretreatgardens.com.au](mailto:amelia@urbanretreatgardens.com.au)  
M: 0438 926 313  
ABN 316 949 974 228

PLANT SCHEDULE				
Symbol	Botanic Name	Mature height x width	Minimum installation size	Number
<b>TREES</b>				
	Callistemon viminalis 'Prolific Weeping Bottlebrush'	6m x 4m	75 Litre	9
	Lagerstroemia indica x fauriei 'Natchez'	7m x 5m	75 Litre	6
	Corymbia ficifolia grafted 'Gin Gin Flowering Red'	6m x 4m	75 Litre	6
	Melaleuca linariifolia	8m x 6m	75 Litre	7
<b>SHRUBS</b>				
	Banksia spinulosa	1.5m x 1.5m	13cm	15
	Leptospermum laevigatum 'Shore Tuff'	50cm x 1.2m	14cm	79
	Leptospermum nanum rubrum	1m x 1m	14cm	13
	Olearia axillaris 'Beach Ball'	40cm x 80cm	13cm	57
<b>GRASSES</b>				
	Dianella revoluta 'Revelation'	50cm x 55cm	14cm	83
<b>GROUND COVER</b>				
	Adenanthos cuneatus 'Coral Carpet'	30cm x 1.5m	Tube	25
	Eremophila glabra prostrate 'Roseworthy'	30cm x 2m	Tube	65
	Grevillea obtusifolia 'Gin Gin Gem'	25cm x 3m	Tube	64
	Hibbertia scandens	50cm x 1m	Tube	39
	Melaleuca huegelii 'Prostrate'	20cm x 2m	Tube	58
	Myoporum parvifolium alba 'Broad Leaf'	10cm x 1.5m	Tube	66
	Scaevola aemula 'Kings Park Midnight'	25cm x 1m	Tube	39
	Westringia fruticosa 'Flat n Fruity'	30cm x 2m	Tube	58
<b>TOTAL PLANTS</b>				<b>689</b>

EXISTING TREE LEGEND	
	Trees to be retained
	Tree to be removed

**TREE VARIETIES**



Callistemon viminalis 'Prolific Weeping Bottlebrush'



Corymbia ficifolia grafted 'Gin Gin Flowering Red'



Lagerstroemia indica x fauriei 'Natchez'



Melaleuca linariifolia

**SHRUB VARIETIES**



Banksia spinulosa



Leptospermum laevigatum 'Shore Tuff'



Leptospermum nanum rubrum



Olearia axillaris 'Beach Ball'

**GRASS VARIETIES**



Dianella revoluta 'Revelation'

**GROUND COVER VARIETIES**



Adenanthos cuneatus 'Coral Carpet'



Eremophila glabra prostrate 'Roseworthy'



Grevillea obtusifolia 'Gin Gin Gem'



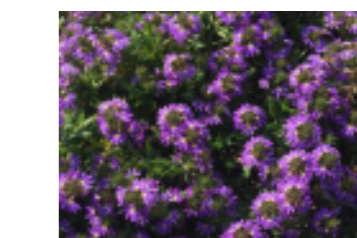
Hibbertia scandens



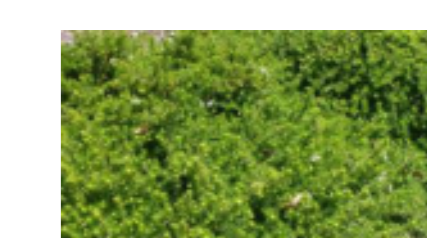
Melaleuca huegelii 'Prostrate'



Myoporum parvifolium alba 'Broad Leaf'



Scaevola aemula 'Kings Park Midnight'



Westringia fruticosa 'Flat n Fruity'

**DISCLAIMER**  
 All symbols and elements depicted in this plan are artistic representations to illustrate conceptual ideas and are subject to approval by the relevant professionals or authority.  
 It is the client's responsibility to ensure the required certifications, licenses and approvals are held prior to installation. Levels and measurements must be checked on site prior to construction.  
 This drawing is copyright protected and remains the property of Urban Retreat Garden Design.

**CLIENT**  
 Accord Property Group  
**PROJECT**  
 Proposed Development  
 Lot 9190 Pinjar Road,  
 Banksia Grove

**DRAWING** Plant Schedule  
**DATE** 07.11.2019  
**PROJECT NUMBER** 19113  
**DESIGNER** Amelia Coleman  
**REVISION** 04

**NOTES**  
 Page 2 of 3  
 See page 1 for Landscape Plan  
 See page 3 for Planting and Edging Detail  
 All planting areas to be mulched to a depth of 75mm. Mulch is pine bark wood chips.  
 Garden bed edging is pegged-in treated pine - see page 3 for edging detail.



COMMERCIAL AND RESIDENTIAL  
 LANDSCAPE DESIGN SERVICES  
[www.urbanretreatgardens.com.au](http://www.urbanretreatgardens.com.au)  
 E:amelia@urbanretreatgardens.com.au  
 M:0438 926 313  
 ABN 31/94997428

**PLANTING SPECIFICATIONS**

Specified plant species have been sourced from Benara Nursery, Domus Nursery, Lullfitz Nursery and Apace WA stock lists.

Should plant species be unavailable at time of planting, contact Designer for substitutions.

All planting areas are to be prepared and planted in accordance with industry standards, the planting details provided on this Plan and the instructions below.

**Preparation of soil in garden bed areas:**

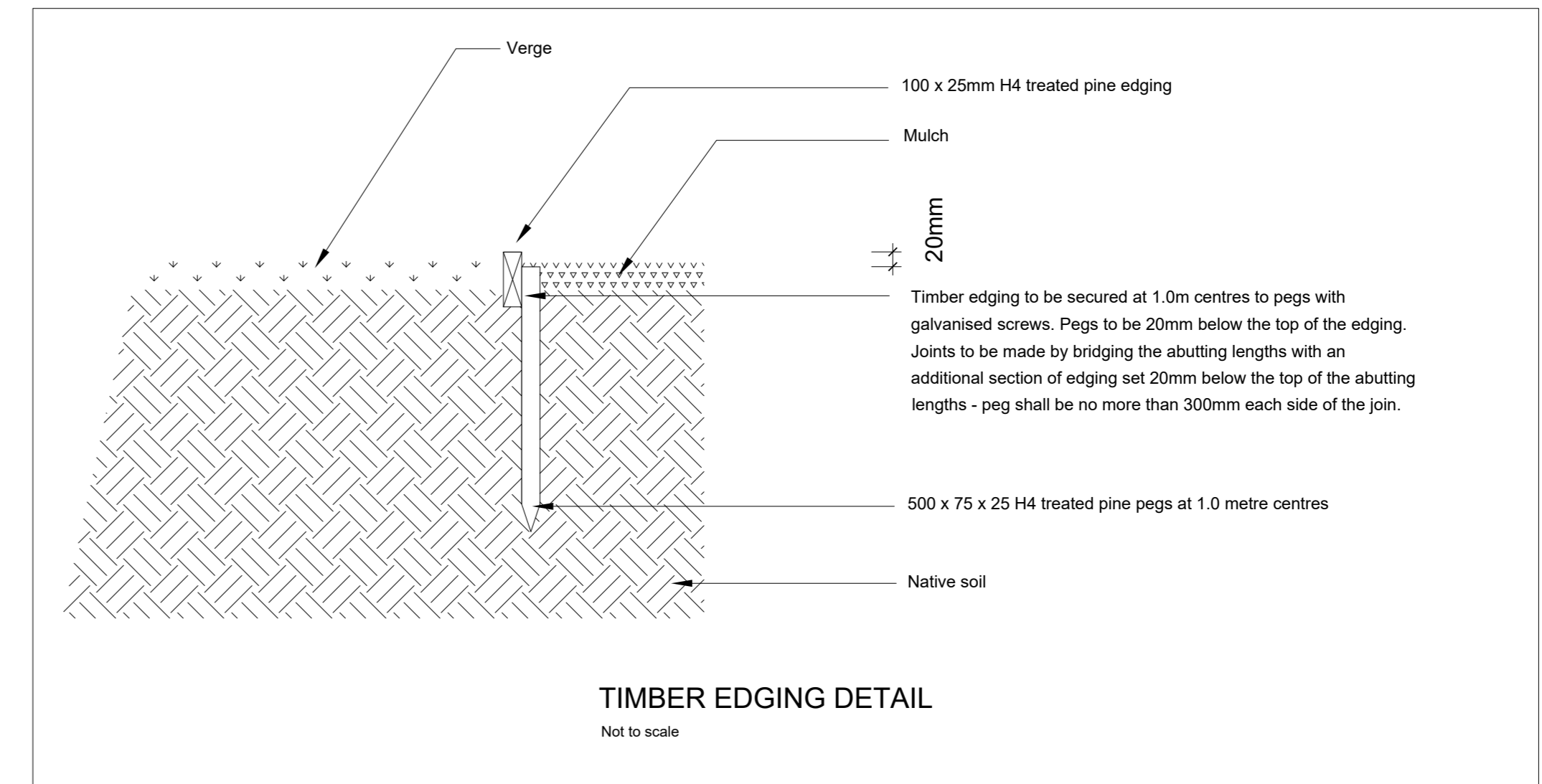
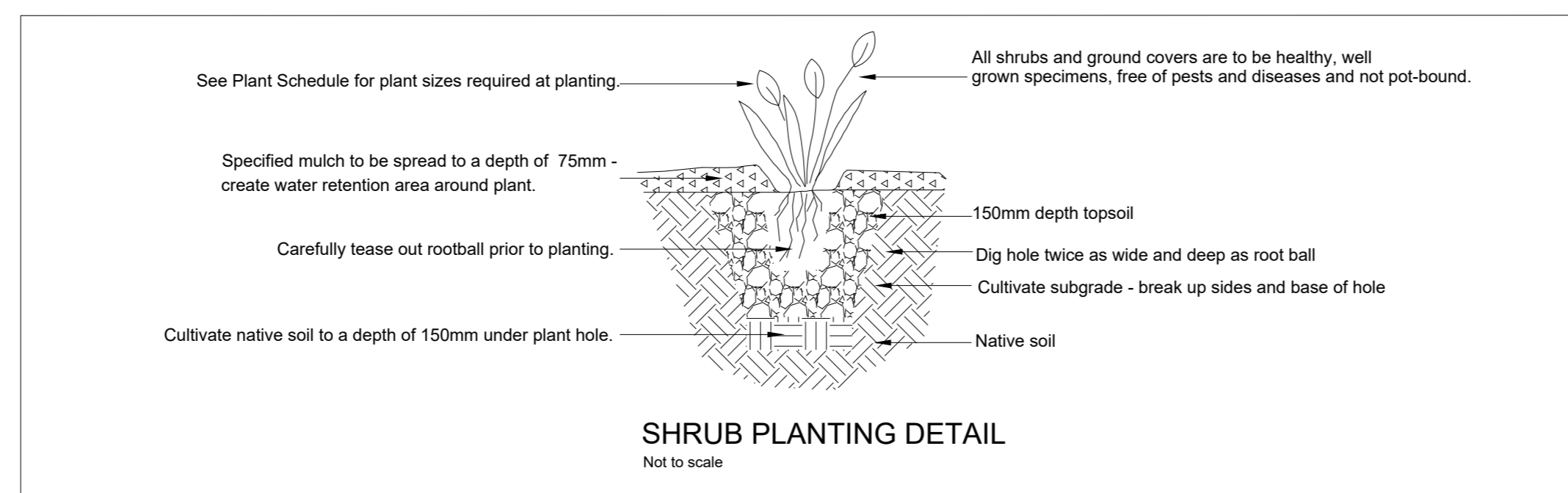
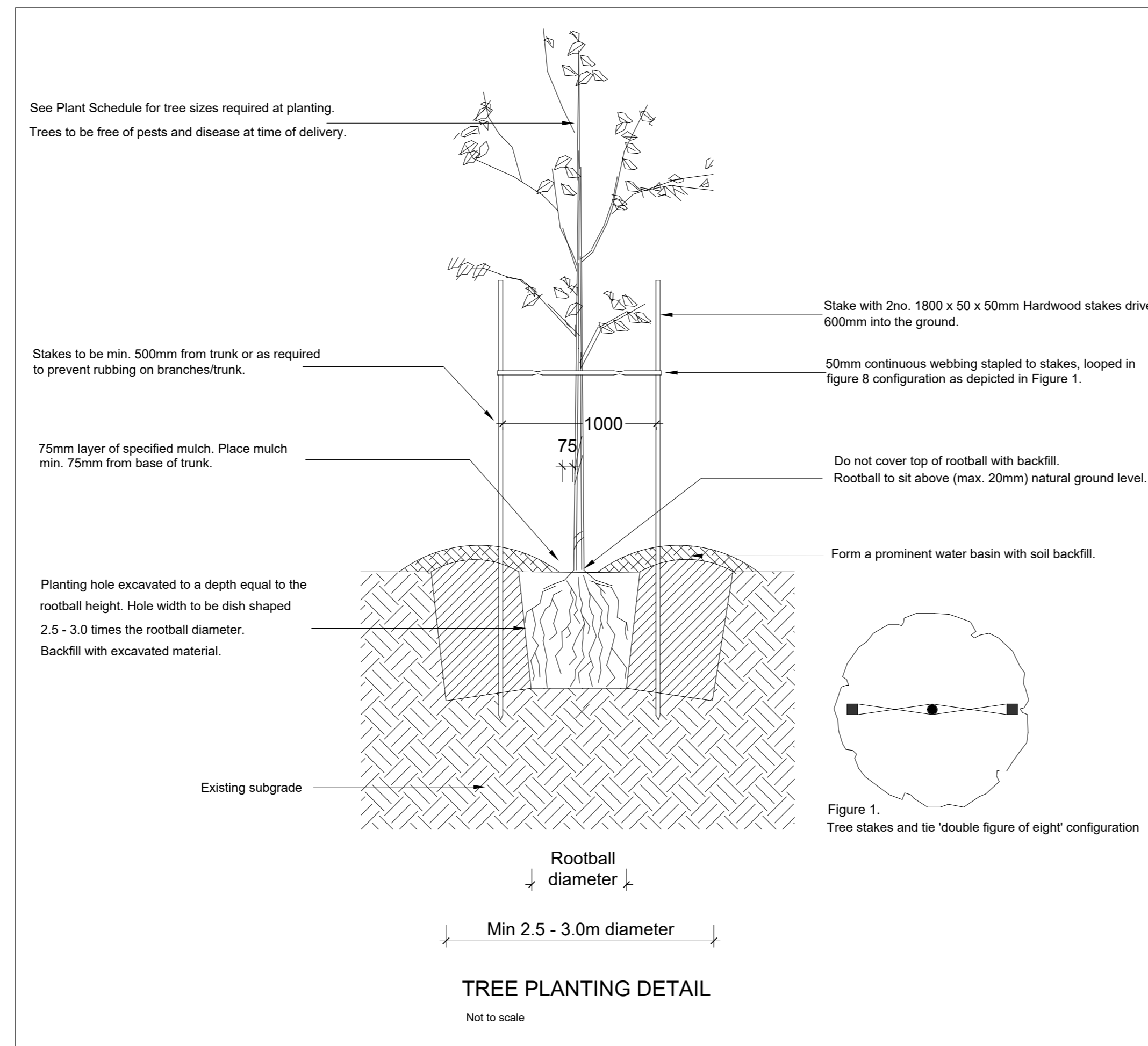
1. Remove all traces of builders' material from planting areas including rubble, sand, mortar and all other extraneous material.
2. Removing all weeds in garden bed areas by spraying weeds with an standard industry herbicide following manufacturer's specifications and leave for recommended time.
3. Remove dead plant matter after time specified on herbicide product.
4. Undertake soil improvement suitable for native plants.
5. Install Irrigation fittings and test system.

**Planting**

1. Plant trees and shrubs (including grasses and ground covers) as specified in 'Typical Tree Planting' and 'Typical Shrub Planting' and water in thoroughly.

**Mulch**

1. After planting, apply pine bark wood chips to a minimum depth of 75mm (maximum 100mm) to planting beds, keeping mulch clear of plant stems. Tidy and grade mulch after application.



**DISCLAIMER**

All symbols and elements depicted in this plan are artistic representations to illustrate conceptual ideas and are subject to approval by the relevant professionals or authority.

It is the client's responsibility to ensure the required certifications, licenses and approvals are held prior to installation. Levels and measurements must be checked on site prior to construction.

This drawing is copyright protected and remains the property of Urban Retreat Garden Design.

**CLIENT**

Accord Property Group

**PROJECT**

Proposed Development  
Lot 9190 Pinjar Road,  
Banksia Grove

**DRAWING** Planting and Edging Detail

DATE 07.11.2019

PROJECT NUMBER REVISION  
19113 04

DESIGNER Amelia Coleman

**NOTES**

Page 3 of 3

See page 1 for Landscape Plan

See page 2 for Plant Schedule

All planting areas to be mulched to a depth of 75mm. Mulch is pine bark wood chips.



COMMERCIAL AND RESIDENTIAL  
LANDSCAPE DESIGN SERVICES

[www.urbanretreatgardens.com.au](http://www.urbanretreatgardens.com.au)

E: [amelia@urbanretreatgardens.com.au](mailto:amelia@urbanretreatgardens.com.au)

M: 0438 926 313

ABN 31696997628