

**LEGEND**

ALLARA COMMUNITY HUB

**KINKUNAPARK**

REFER TO COMMUNITY CAFÉ - DETAIL

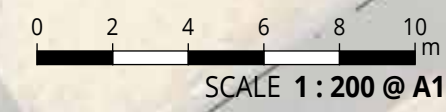
**ALLARA  
COMMUNITYHUB**

**REVOLUTIONAVE**

LOCATION PLAN



**ALLARACOMMUNITYHUB**



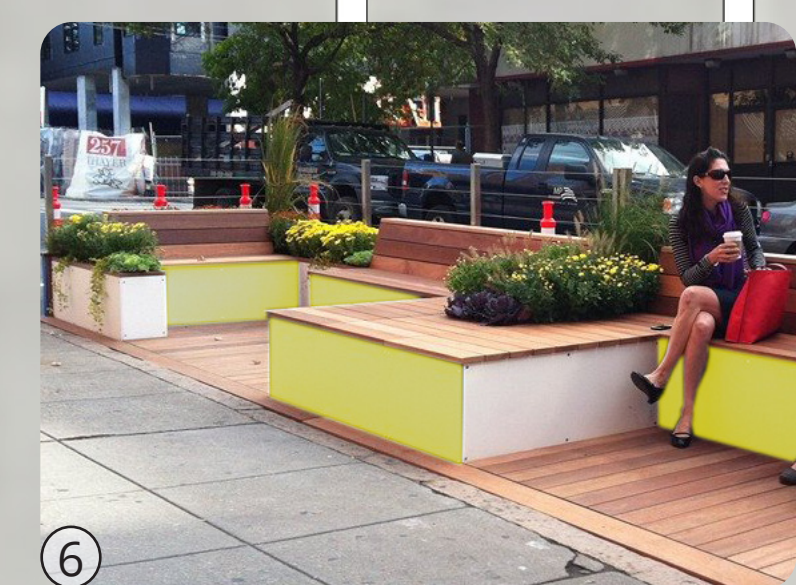
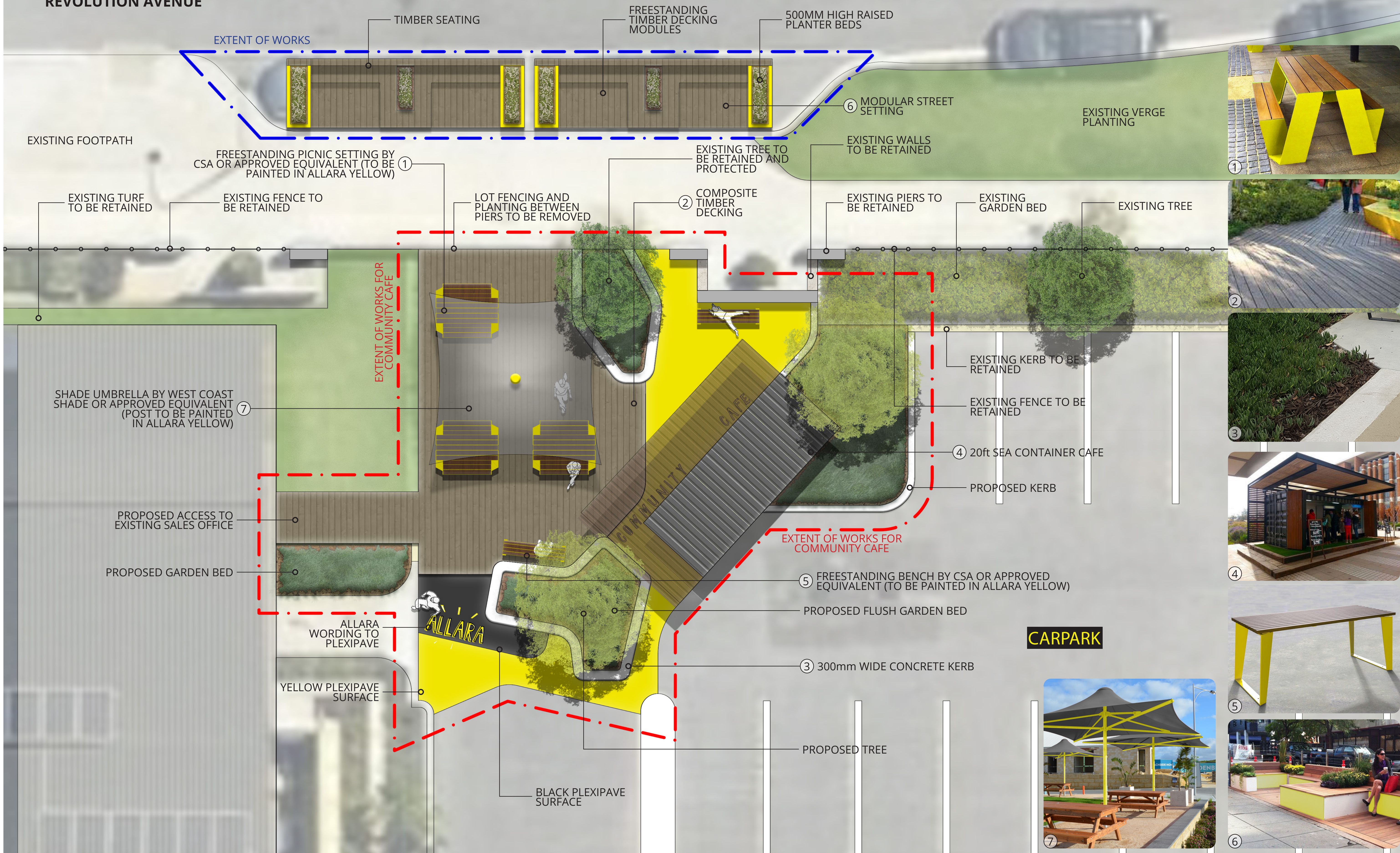
**ALLARA COMMUNITY HUB**

REF: NE - SS - SK01  
REV E  
DEC19





REVOLUTION AVENUE



0 0.5 1.0 1.5 2.0 2.5  
SCALE 1:100 @ A1

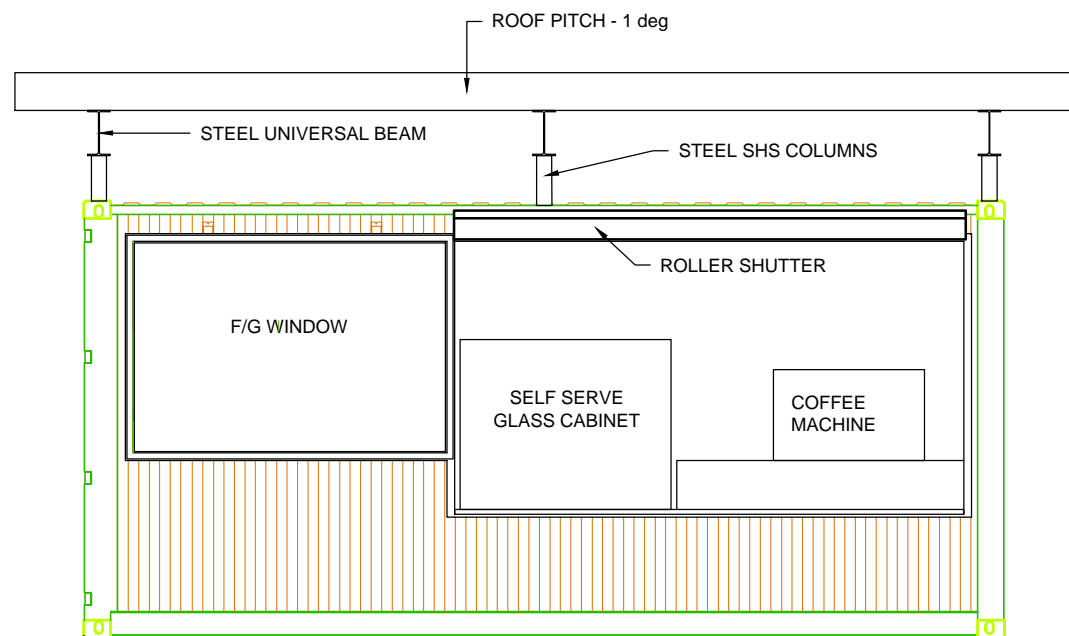


ALLARA COMMUNITY CAFÉ - DETAIL

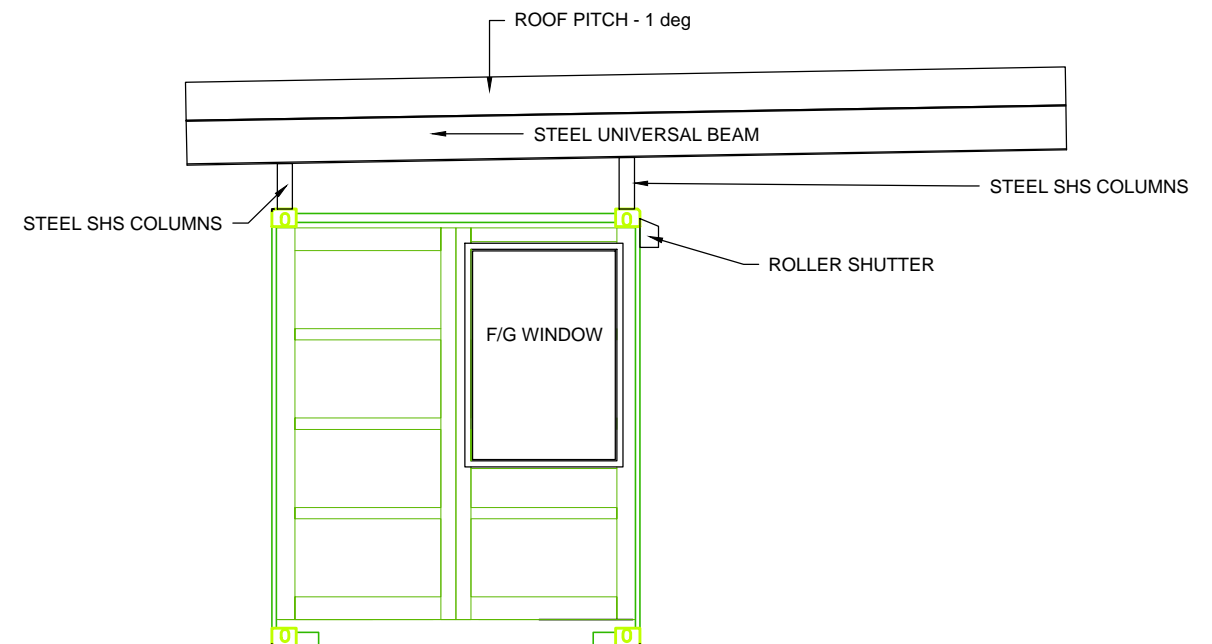
REF: NE - SS - SK02  
REV D  
DEC19



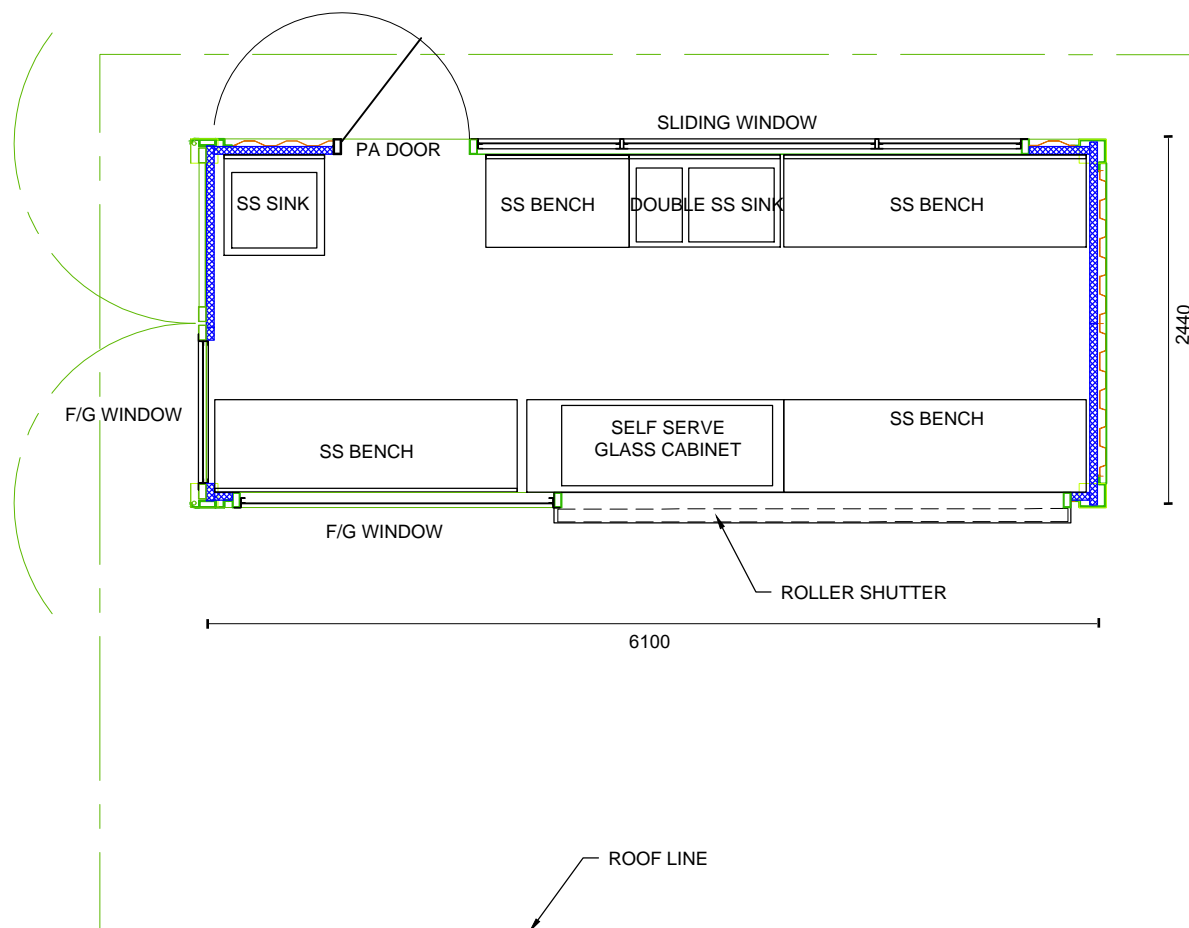




**FRONT ELEVATION**

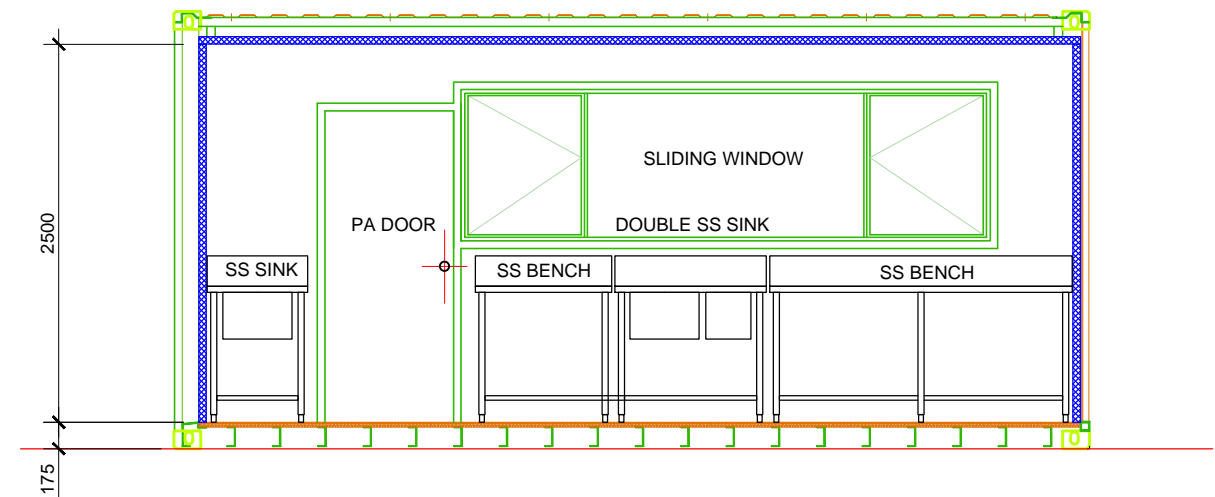


**SIDE ELEVATION**

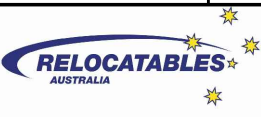


**PLAN**

This drawing remains the property of RELOCATABLES AUSTRALIA and is not to be copied without prior consent from the management of RLA



**SECTION**

Drawn by:- T Lees	Checked by:-	Approved by/ Date:-	File number:	Date:- 18 / 10 / 2019	Scale:- 1 : 50
			<b>SATTERLEY ALLARA - PROPOSED SEA CONTAINER CAFE</b>		
				Edition 2	Sheet