



Masterplan taken from Stockland website on 09.01.2020 (Not to scale)  
**AMBERTON MASTERPLAN**



Aerial image taken from www.nearmap.com on 09.01.2020 (Not to scale)  
**SITE CONTEXT PLAN**



Images taken on 10.09.2019 (Not to scale)  
**EXISTING SITE PHOTOS**

**STOCKLAND**  
**AMBERTON - CHILD CARE, CNR OF INDIGO ST & HEATH AVE, AMBERTON**

**SITE CONTEXT PLAN**  
**DEVELOPMENT APPLICATION**

CONCEPT DRAWINGS ONLY & SUBJECT TO CHANGE. NEW FULL SITE RE-ESTABLISHMENT SURVEY TO BE UNDERTAKEN FOR FURTHER INFORMATION & ALL EXISTING SITE INFORMATION, INCLUDING TITLE BOUNDARIES TO BE CONFIRMED ON SITE. ALL DIMENSIONS APPROXIMATE ONLY & SUBJECT TO CHANGE.

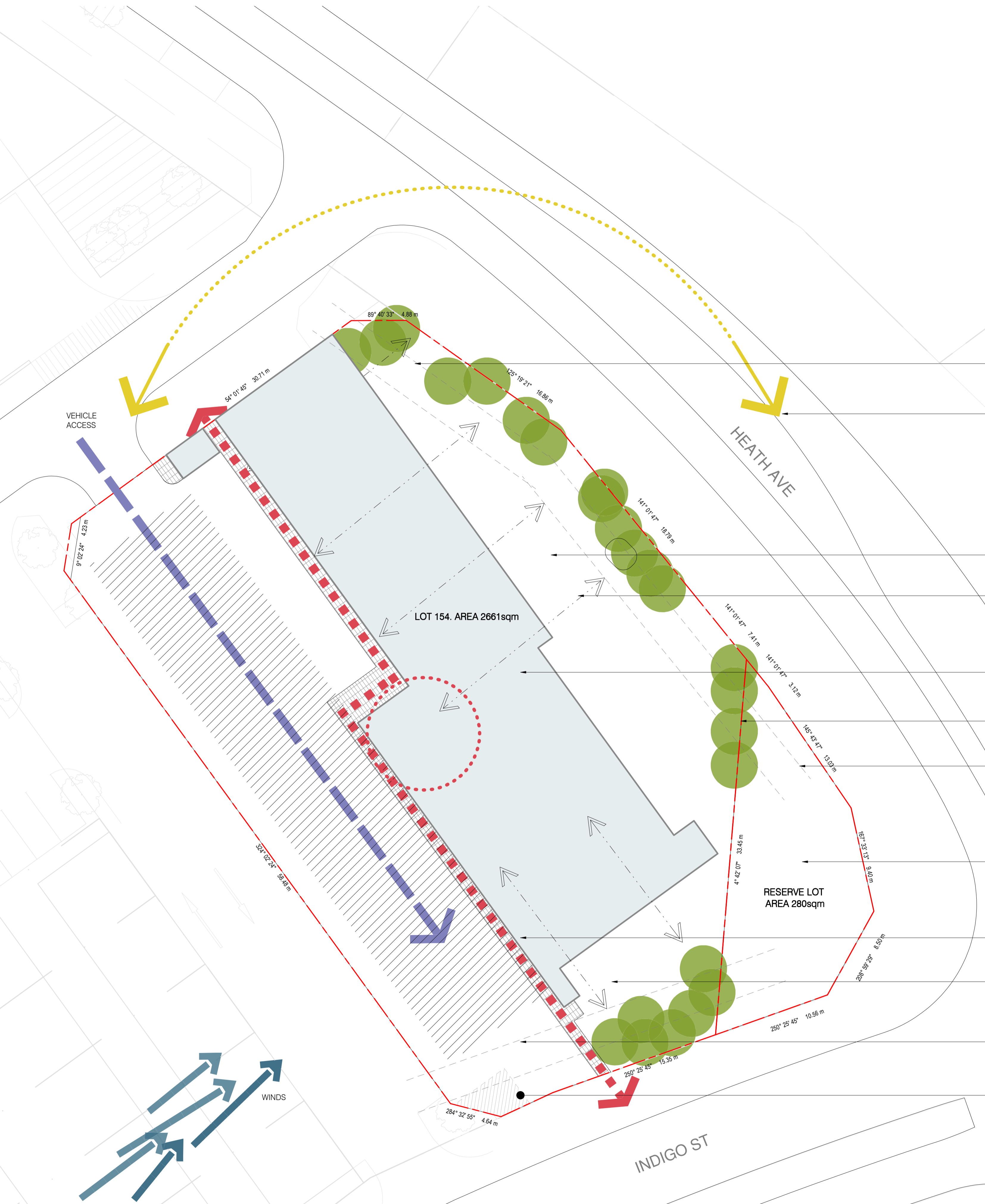
PROJECT: 2019-112  
DATE: 09.01.2020

DRAWING NO. DA01  
DRAWN BY: WKO

MEL SYD PER 1800 422 533



CSA  
Christopher Senior  
and Associates



DESIGN INSPIRATION

MATERIALITY



- MATERIAL PALLETTE DRAWS INSPIRATION FROM HISTORY OF AMBERTON - BARQUE SHIP HULL & SAIL
- NATURALLY WEATHERED TIMBER CLADDING (HULL TIMBER CLADDING)
- EXPOSED TIMBER POST & BEAM STRUCTURE(MAST STRUCTURE)
- CORRUGATED OPAQUE & TRANSLUCENT POLYCARB SHEETS (SAILS)

ARCHITECTURAL FORM



- THERE IS HISTORICAL SIGNIFICANCE THROUGHOUT THE ELINGTON AREA, IN PARTICULAR A BARQUE VESSLE WRECK LOCATED ON THE COAST LINE. THE FORM AND MATERIAL SELECTION HAS BEEN DERIVED FROM THIS CONNECTION TO HISTORY
- UTILISING POLYCARBONATE AND WHITE BRICK IN ADDITION TO THE FOLDED ROOF FORM AND TIMBER CLADDING IS A LINKAGE TO THE OLD WRECK
- THE EXPOSED TIMBER FRAMING AND MEMBERS TO THE EAST SIDE OF THE CHILD CARE CENTRE. REPRESENT THE STRUCTURE AND MASTS OF THE BOAT AND ACT AS SHADING / PROTECTION DEVICES FOR THE CHILDREN FROM SUN AND RAIN.

DESIGN INSPIRATION

SITE ANALYSIS 1 : 200

0 6m 1:200 @A1

STOCKLAND  
**AMBERTON - CHILD CARE, CNR OF INDIGO ST & HEATH AVE, AMBERTON**

**SITE ANALYSIS**  
 DEVELOPMENT APPLICATION

CONCEPT DRAWINGS ONLY & SUBJECT TO CHANGE. NEW FULL SITE RE-ESTABLISHMENT SURVEY TO BE UNDERTAKEN FOR FURTHER INFORMATION & ALL EXISTING SITE INFORMATION, INCLUDING TITLE BOUNDARIES TO BE CONFIRMED ON SITE. ALL DIMENSIONS APPROXIMATE ONLY & SUBJECT TO CHANGE.

PROJECT:  
2019-112  
DATE:  
09.01.2020

DRAWING NO.  
DA02  
DRAWN BY:  
CFE

MEL  
SYD  
PER  
1800 422 533

**i2c**  
i2c.com.au

CSA  
Christopher Senior  
and Associates

**PARKING TOTALS**

Parking Type	No. Bays
DISABLED	1
PARENTS	12
STAFF	19
<b>GRAND TOTAL</b>	<b>32</b>

**ROOM SCHEDULE**

Room Name	Description	Area
<b>INTERNAL AREA</b>		
AMB	AMBULANT TOILET	3 m <sup>2</sup>
B.S.	BED STORAGE	1 m <sup>2</sup>
B.S.	BED STORAGE	1 m <sup>2</sup>
B.S.	BED STORAGE	1 m <sup>2</sup>
B.S.	BED STORAGE	1 m <sup>2</sup>
B.S.	BED STORAGE	1 m <sup>2</sup>
BINS	BINS STORAGE	9 m <sup>2</sup>
C	COMMUNICATION CABINET	1 m <sup>2</sup>
CHANGE	BABY CHANGE ROOM	13 m <sup>2</sup>
CIRCULATION	INTERNAL CIRCULATION	132 m <sup>2</sup>
COTS	BABY COTS ROOM	27 m <sup>2</sup>
COTS	BABY COTS ROOM	20 m <sup>2</sup>
E	ELECTRICAL CABINET	1 m <sup>2</sup>
FOYER	ENTRY FOYER	23 m <sup>2</sup>
IT	IT ROOM	3 m <sup>2</sup>
KITCHEN	KITCHEN	35 m <sup>2</sup>
LDRY	LAUNDRY	7 m <sup>2</sup>
MEETING	MEETING ROOM	7 m <sup>2</sup>
MP	MILK PREP ROOM	9 m <sup>2</sup>
PTRY	PANTRY	3 m <sup>2</sup>
PLANT	MECH PLANT ROOM	8 m <sup>2</sup>
PLAY SPACE 1	KIDS INDOOR PLAY SPACE	51 m <sup>2</sup>
PLAY SPACE 2	KIDS INDOOR PLAY SPACE	50 m <sup>2</sup>

**ROOM SCHEDULE**

Room Name	Description	Area
PLAY SPACE 3	KIDS INDOOR PLAY SPACE	74 m <sup>2</sup>
PLAY SPACE 4	KIDS INDOOR PLAY SPACE	74 m <sup>2</sup>
PLAY SPACE 5	KIDS INDOOR PLAY SPACE	74 m <sup>2</sup>
PLAY SPACE 6	KIDS INDOOR PLAY SPACE	75 m <sup>2</sup>
PRAM	PRAM STORAGE	7 m <sup>2</sup>
PROG	STAFF PROGRAM ROOM	9 m <sup>2</sup>
RECEP.	RECEPTION	8 m <sup>2</sup>
ST	STORAGE	1 m <sup>2</sup>
ST	STORAGE	1 m <sup>2</sup>
ST	STORAGE	1 m <sup>2</sup>
ST	STORAGE	1 m <sup>2</sup>
ST	STORAGE	1 m <sup>2</sup>
STAFF	STAFF ROOM	23 m <sup>2</sup>
STAFF TOILET	STAFF TOILET	3 m <sup>2</sup>
STORE 1	TODDLER PLAY SPACE STORAGE	8 m <sup>2</sup>
STORE 2	TODDLER PLAY SPACE STORAGE	8 m <sup>2</sup>
STORE 3	GENERAL STORAGE	6 m <sup>2</sup>
STORE 4	BABY PLACE SPACE STORE ROOM	10 m <sup>2</sup>
STORE E1	OUTDOOR PLAY AREA 1 STORAGE	5 m <sup>2</sup>
STORE E2	OUTDOOR PLAY AREA 2 STORAGE	8 m <sup>2</sup>
U.A.T	UNIVERSAL ACCESS TOILET	6 m <sup>2</sup>
W.C	PLAYSPACE TOILET	18 m <sup>2</sup>
W.C	PLAYSPACE TOILET	18 m <sup>2</sup>
YARD	STAFF YARD	6 m <sup>2</sup>
<b>GRAND TOTAL</b>		<b>849 m<sup>2</sup></b>

<b>EXTERNAL AREA</b>		
OUTDOOR PLAY AREA 1	OUTDOOR PLAY AREA	173 m <sup>2</sup>
OUTDOOR PLAY AREA 2	OUTDOOR PLAY AREA	588 m <sup>2</sup>
<b>GRAND TOTAL</b>		<b>761 m<sup>2</sup></b>
<b>GRAND TOTAL</b>		<b>1611 m<sup>2</sup></b>



**SOUTH EAST AERIAL**



**SOUTH WEST VIEW 1**



**SOUTH WEST VIEW 2**

NEW CROSS OVER INTO SITE.  
PRIMARY VEHICLE ACCESS POINT TO CHILDCARE CENTRE. LETTER BOX LOCATED AT FOOTPATH.

PEDESTRIAN ACCESS

PROPOSED BIN ROOM.

2+ YEARS OUTDOOR PLAY AREAS TO BE DESIGNED BY OTHERS.

CANOPY OVER.  
2+ YEARS PLAY AREAS ORIENTATED EAST TO OUTDOOR AREA. UTILISE THE SETBACKS IN OUTDOOR AREA

1800mm H COMBINATION WHITE BLOCK & VERTICAL SLAT FENCING AROUND PERIMTER OF OUTDOOR AREA, LINKING BACK TO BUILDING FOOTPRINT



INDICATIVE VEGETATION SURROUNDING OUTDOOR PLAY AREA. SPECIES TO BE DETERMINED BUT TO FIT WITHIN THE AMBERTON DESIGN GUIDELINES AND POLICIES

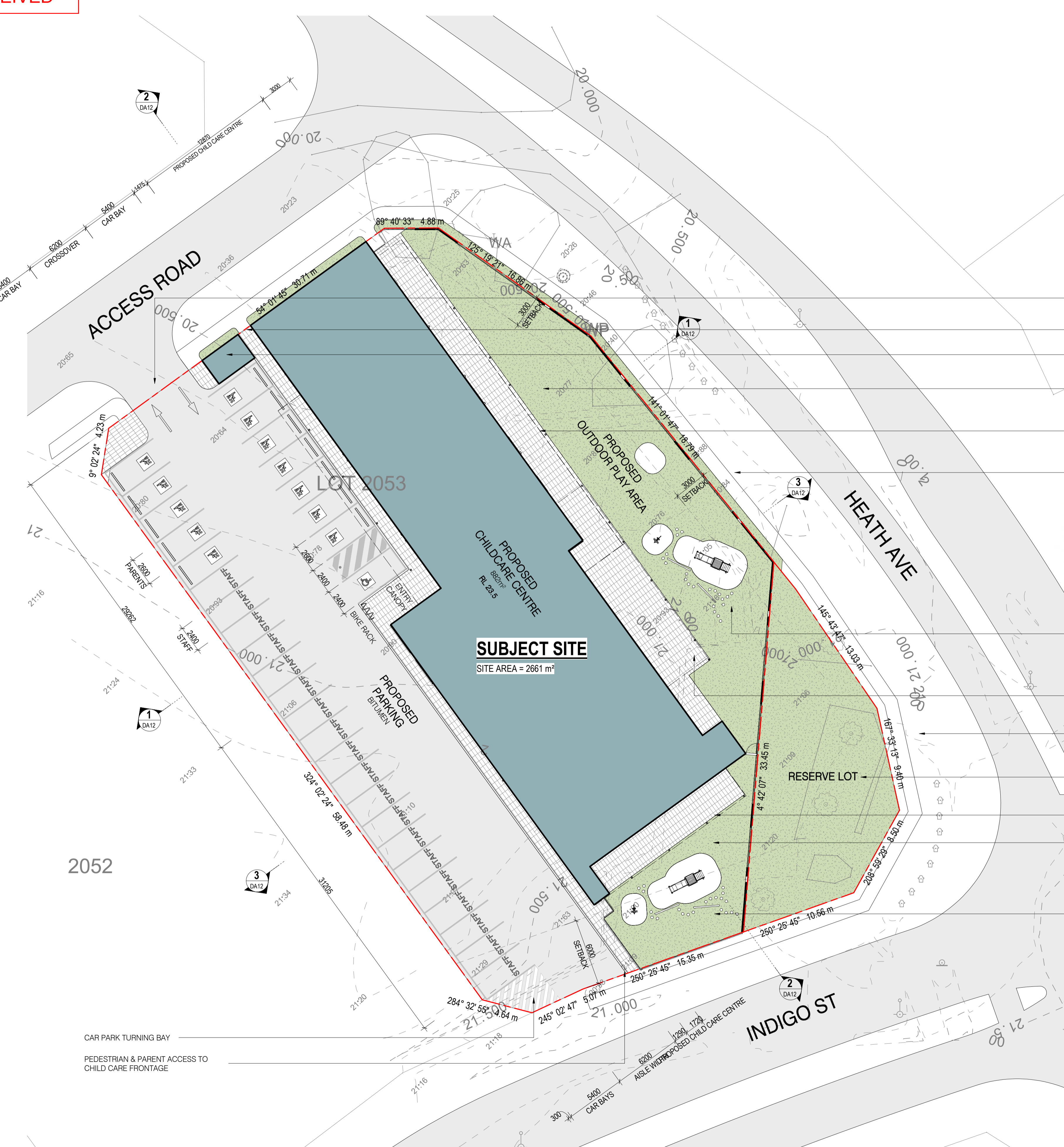
CHILDRENS ALFRESCO DINING WITH SHADED COVER PERGOLA. NATURAL VEGETATION HANGING FROM CROSS MEMBERS

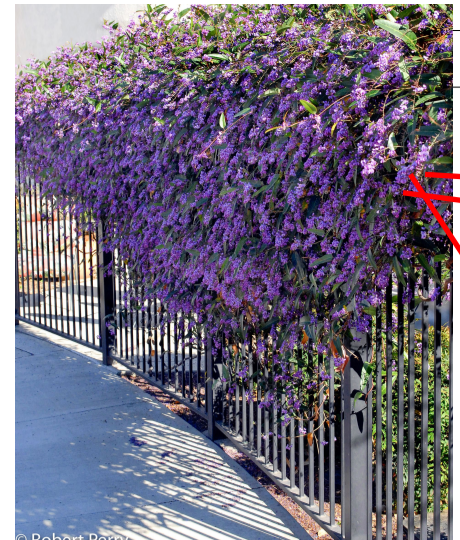
EXISTING FOOTPATHS AND SURROUNDING CONTEXT BY OTHERS

AMBERTON BEACH RESERVE LOT. SIGNAGE AND EXISTING VEGETATION. NOT PART OF THIS DA

MAIN ROOF OVER  
0-2 YEARS OUTDOOR PLAY AREAS ORIENTATED SOUTH EAST TO OUTDOOR AREA. UTILISE THE SETBACKS IN OUTDOOR AREA

INDICATIVE VEGETATION SURROUNDING OUTDOOR PLAY AREA. SPECIES TO BE DETERMINED BUT TO FIT WITHIN THE AMBERTON DESIGN GUIDELINES AND POLICIES





NATIVE WISTERIA



CUSHION BUSH



CUSHION BUSH

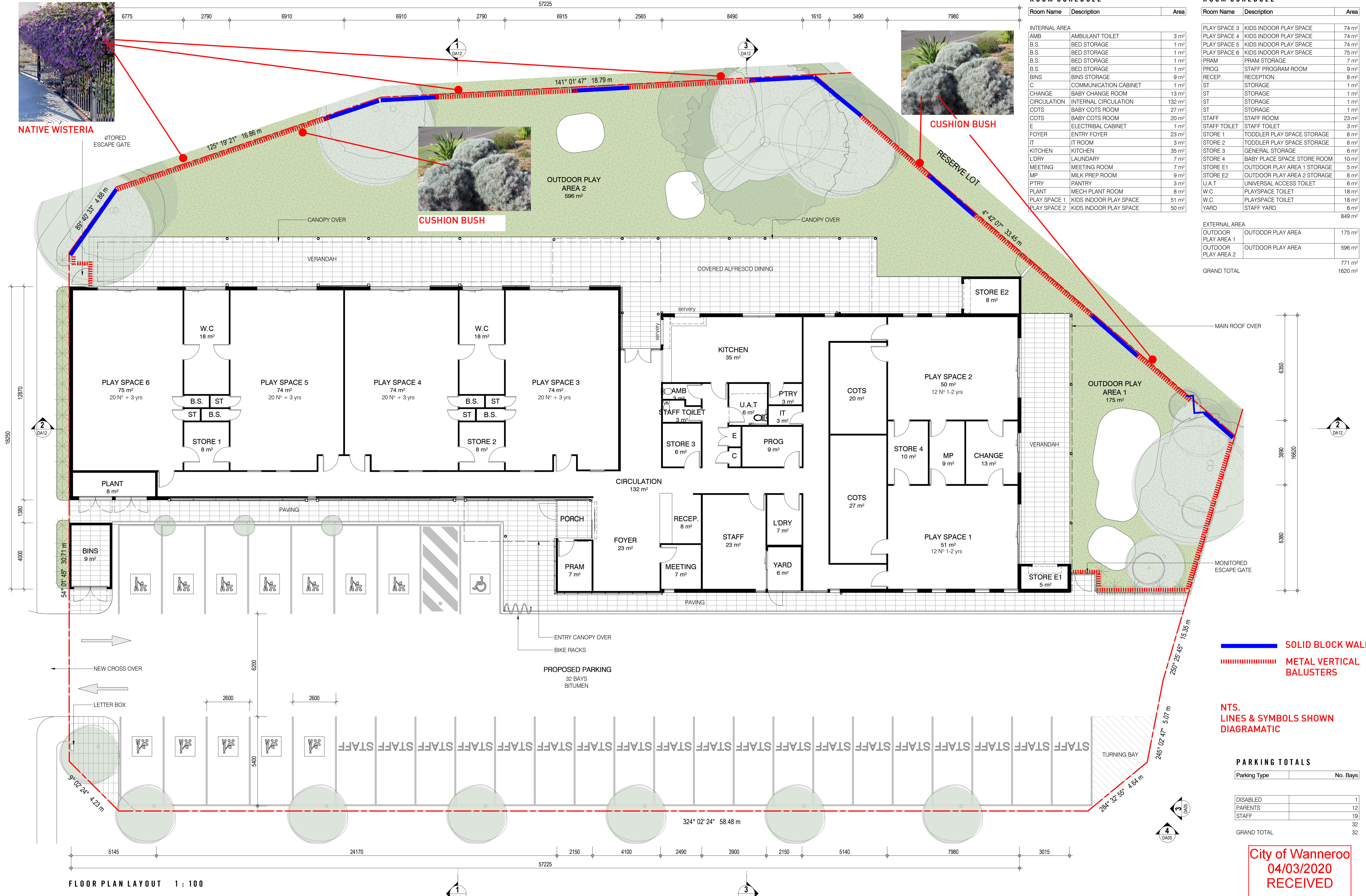
ROOM SCHEDULE

Room Name	Description	Area
INTERNAL AREA		
AMB	AMBULANT TOILET	3 m <sup>2</sup>
B.S.	BED STORAGE	1 m <sup>2</sup>
B.S.	BED STORAGE	1 m <sup>2</sup>
B.S.	BED STORAGE	1 m <sup>2</sup>
B.S.	BED STORAGE	1 m <sup>2</sup>
B.S.	BED STORAGE	1 m <sup>2</sup>
BINS	BINS STORAGE	9 m <sup>2</sup>
C	COMMUNICATION CABINET	1 m <sup>2</sup>
CHANGE	BABY CHANGE ROOM	13 m <sup>2</sup>
CIRCULATION	INTERNAL CIRCULATION	132 m <sup>2</sup>
COTS	BABY COTS ROOM	27 m <sup>2</sup>
COTS	BABY COTS ROOM	20 m <sup>2</sup>
E	ELECTRICAL CABINET	1 m <sup>2</sup>
FOYER	ENTRY FOYER	23 m <sup>2</sup>
IT	IT ROOM	3 m <sup>2</sup>
KITCHEN	KITCHEN	35 m <sup>2</sup>
L'DRY	LAUNDRARY	7 m <sup>2</sup>
MEETING	MEETING ROOM	7 m <sup>2</sup>
MP	MILK PREP ROOM	9 m <sup>2</sup>
PTRY	PANTRY	3 m <sup>2</sup>
PLANT	MECH PLANT ROOM	8 m <sup>2</sup>
PLAY SPACE 1	KIDS INDOOR PLAY SPACE	51 m <sup>2</sup>
PLAY SPACE 2	KIDS INDOOR PLAY SPACE	50 m <sup>2</sup>

ROOM SCHEDULE

Room Name	Description	Area
PLAY SPACE 3	KIDS INDOOR PLAY SPACE	74 m <sup>2</sup>
PLAY SPACE 4	KIDS INDOOR PLAY SPACE	74 m <sup>2</sup>
PLAY SPACE 5	KIDS INDOOR PLAY SPACE	74 m <sup>2</sup>
PLAY SPACE 6	KIDS INDOOR PLAY SPACE	75 m <sup>2</sup>
PRAM	PRAM STORAGE	7 m <sup>2</sup>
PROG	STAFF PROGRAM ROOM	9 m <sup>2</sup>
RECEP.	RECEPTION	8 m <sup>2</sup>
ST	STORAGE	1 m <sup>2</sup>
ST	STORAGE	1 m <sup>2</sup>
ST	STORAGE	1 m <sup>2</sup>
ST	STORAGE	1 m <sup>2</sup>
STAFF	STAFF ROOM	23 m <sup>2</sup>
STAFF TOILET	STAFF TOILET	3 m <sup>2</sup>
STORE 1	TODDLER PLAY SPACE STORAGE	8 m <sup>2</sup>
STORE 2	TODDLER PLAY SPACE STORAGE	8 m <sup>2</sup>
STORE 3	GENERAL STORAGE	6 m <sup>2</sup>
STORE 4	BABY PLACE SPACE STORE ROOM	10 m <sup>2</sup>
STORE E1	OUTDOOR PLAY AREA 1 STORAGE	5 m <sup>2</sup>
STORE E2	OUTDOOR PLAY AREA 2 STORAGE	8 m <sup>2</sup>
U.A.T	UNIVERSAL ACCESS TOILET	6 m <sup>2</sup>
W.C	PLAYSPACE TOILET	18 m <sup>2</sup>
W.C	PLAYSPACE TOILET	18 m <sup>2</sup>
YARD	STAFF YARD	6 m <sup>2</sup>
GRAND TOTAL		849 m <sup>2</sup>

EXTERNAL AREA		Area
OUTDOOR PLAY AREA	OUTDOOR PLAY AREA	175 m <sup>2</sup>
OUTDOOR PLAY AREA 1	OUTDOOR PLAY AREA	596 m <sup>2</sup>
OUTDOOR PLAY AREA 2	OUTDOOR PLAY AREA	771 m <sup>2</sup>
GRAND TOTAL		1620 m <sup>2</sup>



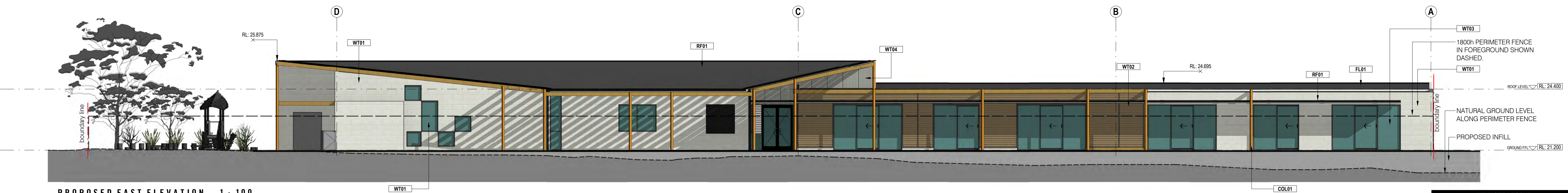
**SOLID BLOCK WALL**  
**METAL VERTICAL BALUSTRES**

**NTS.**  
**INES & SYMBOLS SHOWN**  
**DIAGRAMATIC**

**PARKING TOTALS**

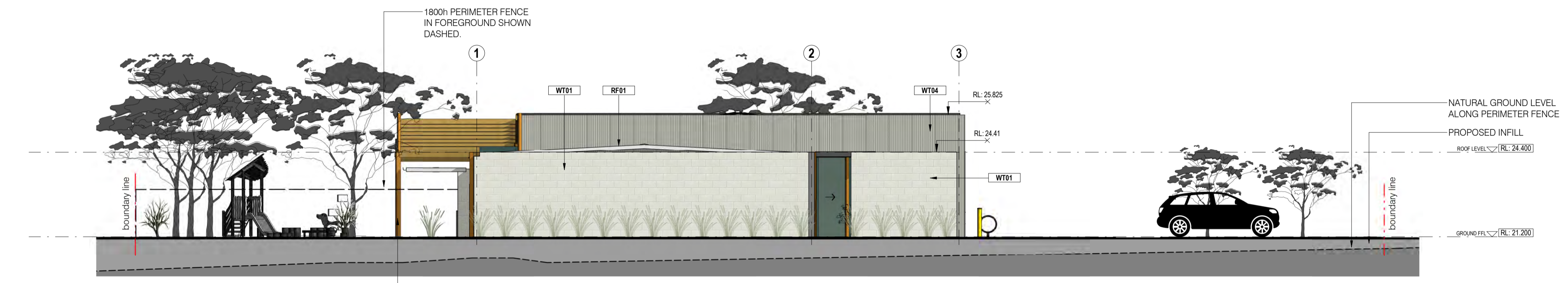
Parking Type	No. Bays
DISABLED	1
PARENTS	12
STAFF	19
GRAND TOTAL	32

**City of Wanneroo**  
**04/03/2020**  
**RECEIVED**

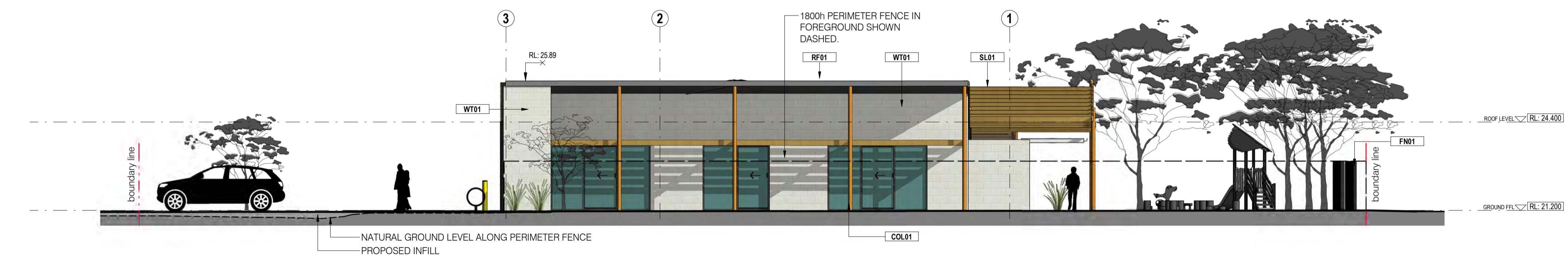


PROPOSED EAST ELEVATION 1 : 100

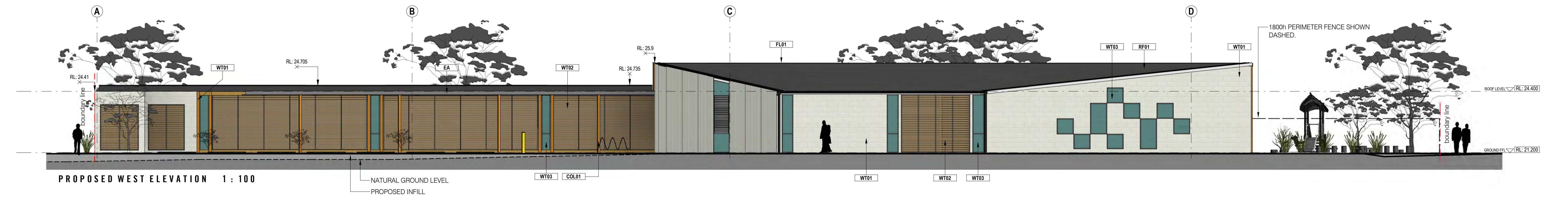
KEYNOTE LEGEND	
COL01	CIRCULAR COLUMNS, TIMBER FINISH
EA	EQUAL ANGLE FACIA PROFILE, GALVANISED FINISH
FL01	RIDGE FLASHING, POWDERCOATED WHITE
FN01	ALUMINIUM SLATED FENCE, VERTICAL PROFILE
RF01	TRUE OAK - SUPERS ROOF SHEETING, WHITE POWDERCOATED FINISH
SL01	160x45 TIMBER FINISHED SHADING SLATS
WT01	190 MASONRY BLOCK, WHITE PAINT FINISH
WT02	SHADOWCLAD HORIZONTAL SLAT FEATURE WALL, PRIMED TIMBER APPEARANCE
WT03	ALUMINIUM FRAME GLAZING, 50x50mm PROFILES, BLACK POWDERCOATED, COMFORT PLUS GLAZING
WT04	OPAL FINISHED POLYCARBONATE OVER BLACK PAINTED STUD WALL



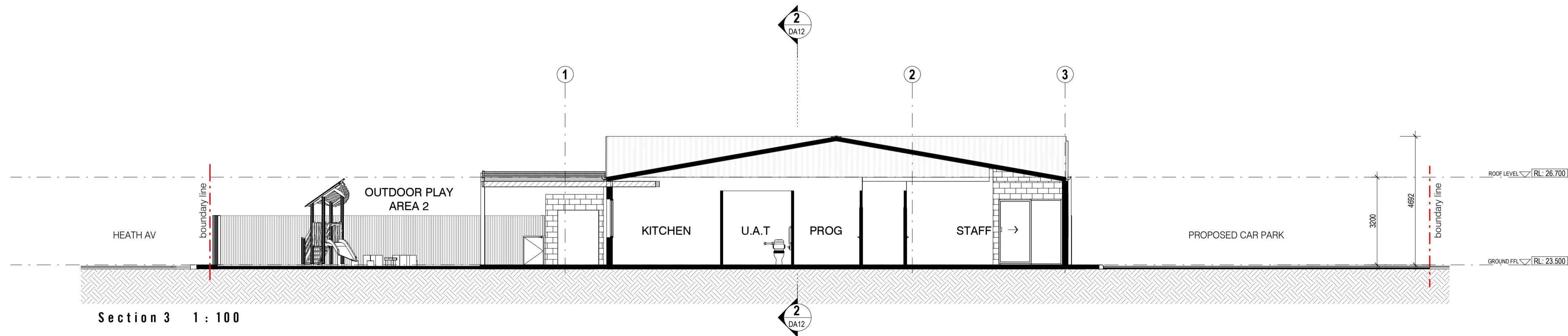
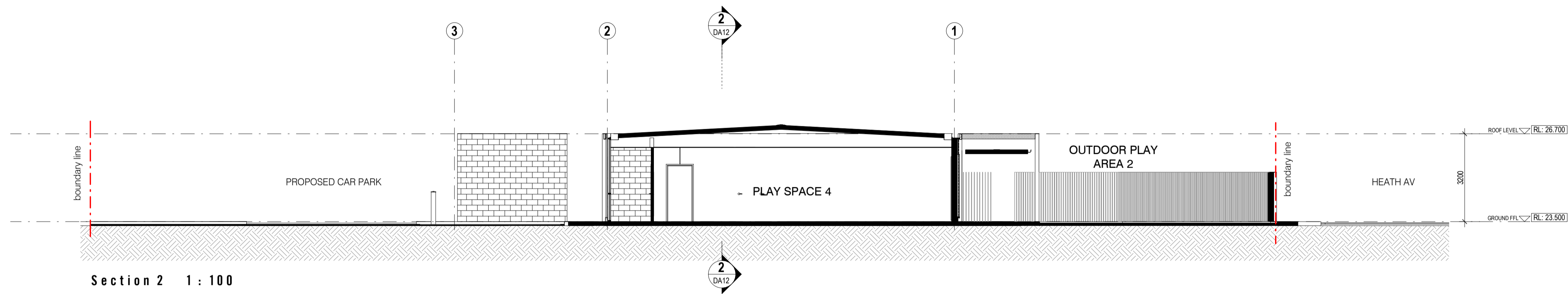
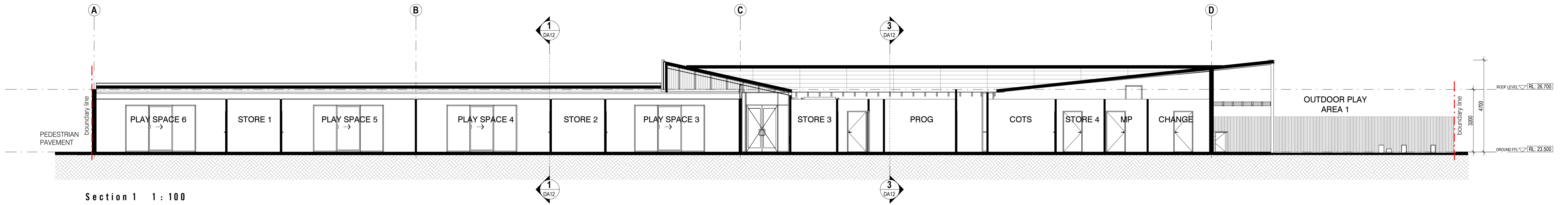
PROPOSED NORTH ELEVATION 1 : 100



PROPOSED SOUTH ELEVATION 1 : 100



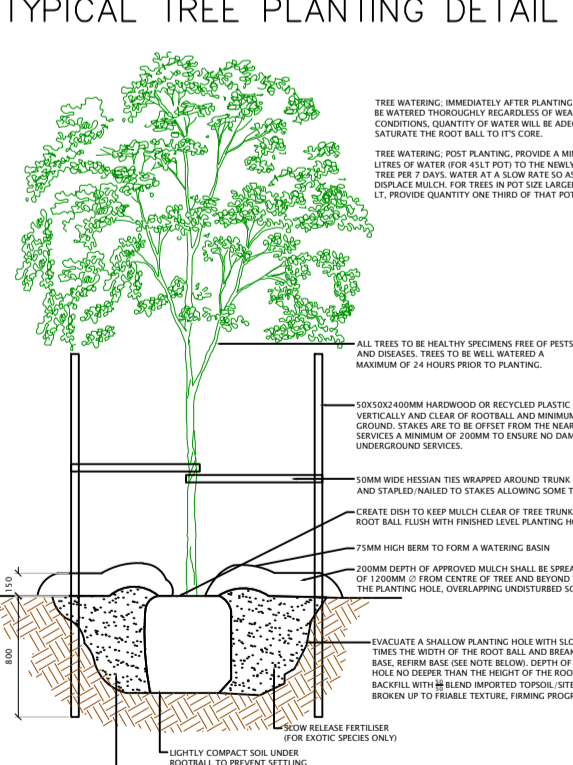
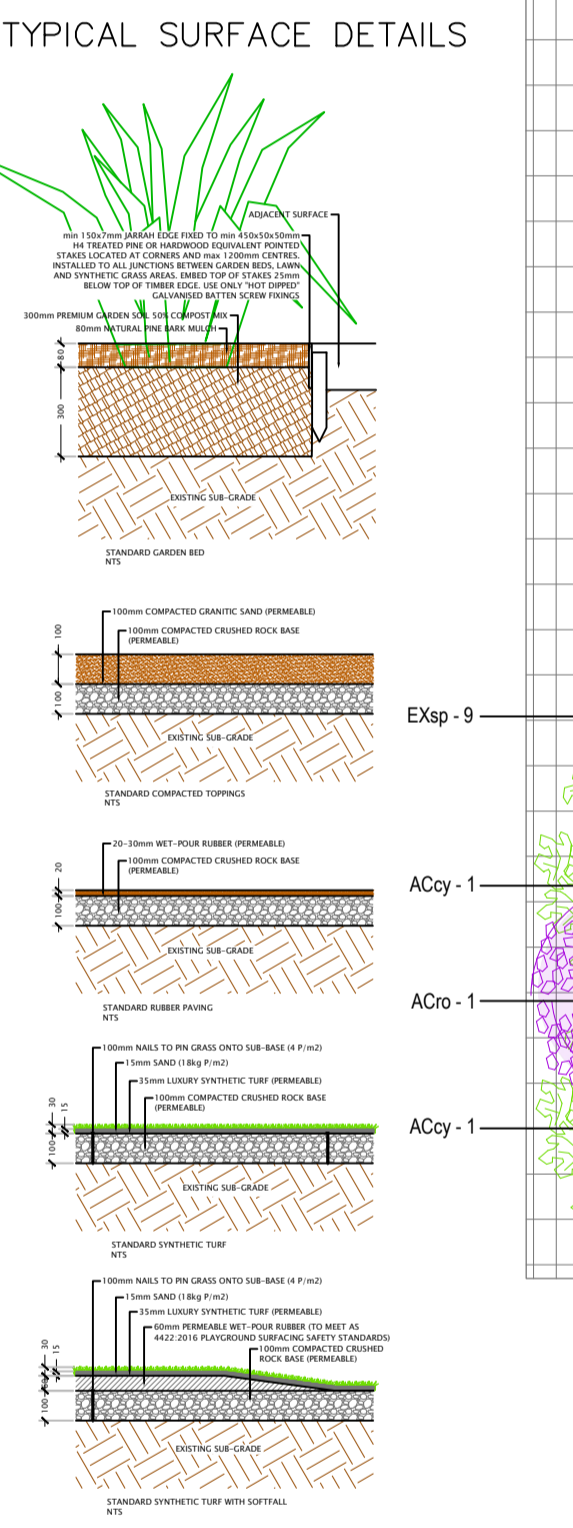
PROPOSED WEST ELEVATION 1 : 100



- LANDSCAPE KEY**
- PLAYSAND
  - DECK/SEAT
  - PAVERS
  - SYNTHETIC TURF
  - NATURAL LAWN 'BUFFALO'
  - COMPACTED TOPPING
  - EXISTING TREES
  - WESTERN COAST WATTLE
  - ROTTENSTEA TREE
  - SUMMER-SCENTED WATTLE
  - PEPPERMINT MYRTLE
  - MARRI TREE
  - BULL BANKSIA
  - ASSORTED FRUIT TREES
  - BROOM BALLART
  - TAR BUSH
  - GREVILLEA
  - CUSHION BUSH
  - CANDLESTICK BANKSIA
  - COASTAL MAT RUSH
  - COASTAL FIGFACE
  - GREY COTTONHEADS
  - NATIVE WISTERIA

**PLANT SCHEDULE - ALL PLANTS SUITABLE FOR USE IN EARLY LEARNING ENVIRONMENTS**

SYMBOL	CODE	QTY	BOTANICAL / COMMON NAME	HEIGHT AT MATURITY	SIZE
<b>TREES</b>					
ACy	12		ACACIA CYCLOPS / WESTERN COAST WATTLE	3m x 3m	30m
MEB	3		MELALEUCA LANCEOLATA / ROTTENSTEA TREE	7m x 5m	40m
ACy	6		ACACIA ROSEIFLORA / SUMMER-SCENTED WATTLE	14m x 5m	30m
AGR	4		AGONIS FLOREOSA / PEPPERMINT MYRTLE	10m x 8m	40m
COal	3		CORYMBIA BRONNII / MARRI TREE	15m x 8m	40m
BAg	4		BANKSIA GRANDIS / BULL BANKSIA	8m x 5m	40m
			ASSORTED FRUIT TREES	3.5m x 3.5m	40m
<b>SHRUBS</b>					
EXp	25		EXOCARPUS GARTNERI / BROOM BALLART	2.5m x 2.0m	20m
ERg	2		ERIPHOILA GLABRA / TAR BUSH	3m x 1.5m	20m
GRv	2		GREVILLEA CHRISOPHYLLA / GREVILLEA	0.5m x 2m	20m
LEB	33		LEUCOPHYTA BRUNNII / CANDLESTICK BANKSIA	1m x 1m	20m
BAH	3		BANKSIA ATTENUATA / CANDLESTICK BANKSIA	2m x 2m	20m
LOM	33		LOMADORA MARITIMA / COASTAL MAT RUSH	60cm x 60cm	20m
<b>GROUNDCOVERS</b>					
CAW	12		CARPOBROTUS VIRESCENS / COASTAL FIGFACE	1m x 1m	20m
COca	108		CONOSTYLIS CANADICUS / GREY COTTONHEADS	0.5m x 0.5m	20m
<b>CLIMBERS</b>					
HAO	46		HARDENBERGIA COMPTONIANA / NATIVE WISTERIA	3m x 2m	20m



City of Wanneroo  
10/01/2020  
RECEIVED

Factory 2,  
10 Industrial Drive  
Melton VIC 3337  
ph: 1300 791 914

**PACKAGE**  
LANDSCAPES AUSTRALIA

info@packagelandscapes.com.au  
www.packagelandscapes.com.au

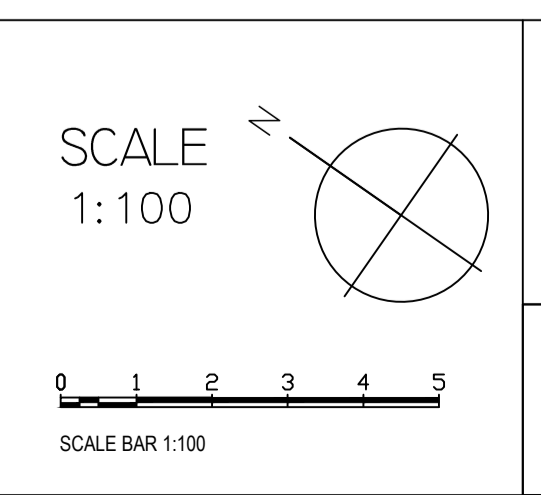
**REVISION HISTORY**

NO.	DESCRIPTION	DATE
B	CLIENT PREF'S	16/01/2020

**BUSY BEES / AMBERTON BEACH**

**LA01 - LANDSCAPE PLAN - A1**

CNR INDIGO ST & HEATH AVE, AMBERTON, WA



PROJECT No. 5513	DRAWING No. LA01	SHEET No. 1 of 1	REVISION No. B
DRAWN BY N.G	LANDSCAPE DESIGNER Natasha Geelen	ISSUE DATE 14/01/2020	

Note: This is a concept design drawing and not a working drawing. It is not to be used for construction purposes. Levels and dimensions are approximate only. This drawing remains the property of Package Landscapes P/L. COPYRIGHT 2014 © PACKAGE LANDSCAPES P/L. No guarantee is given to the accuracy of dimensions, location of boundaries, services or other features as this drawing has been produced from information provided by the client.



SHADOW ANALYSIS - 20 JUNE 9am 1 : 350

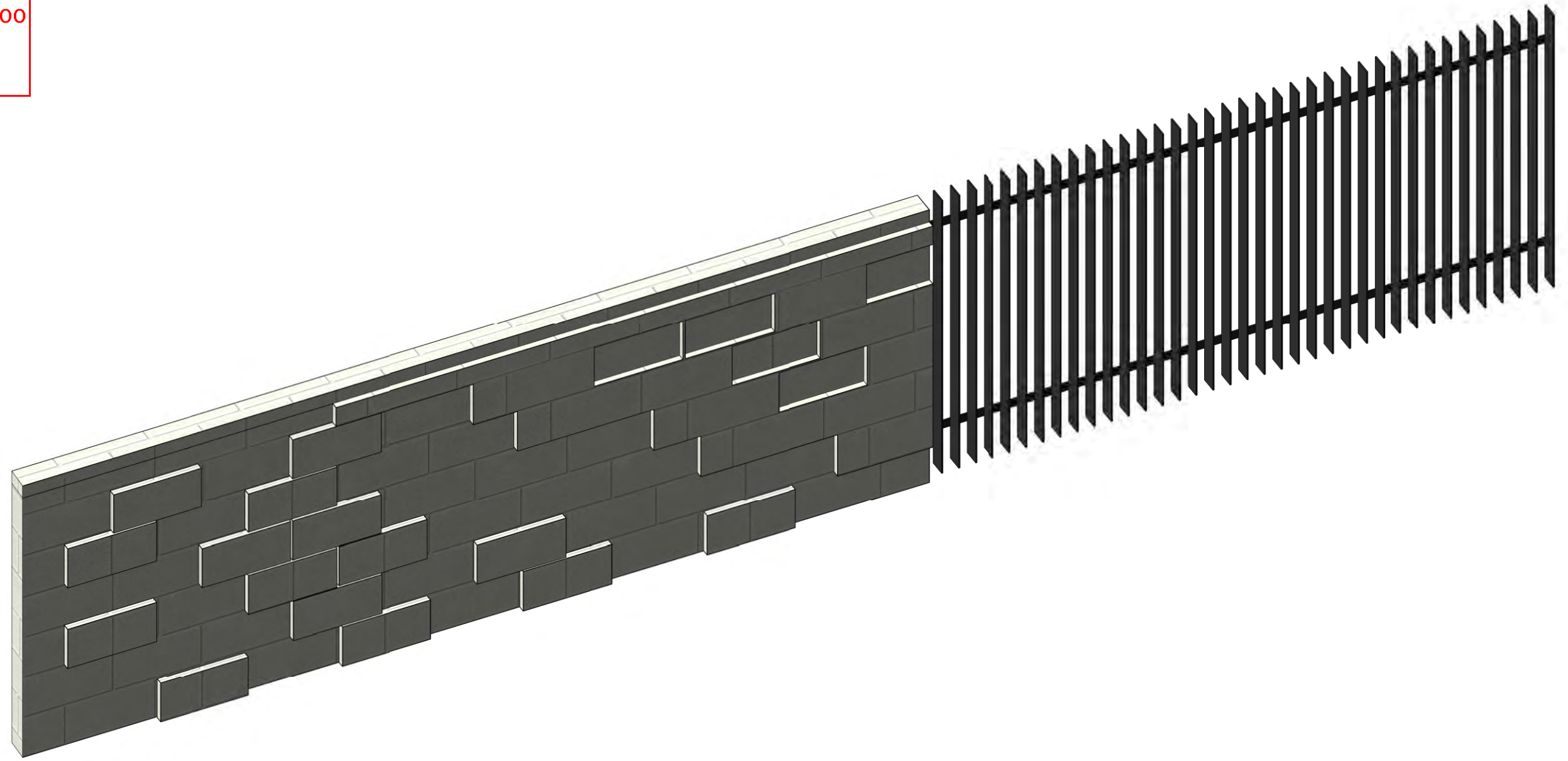


SHADOW ANALYSIS - 20 JUNE 12pm 1 : 350

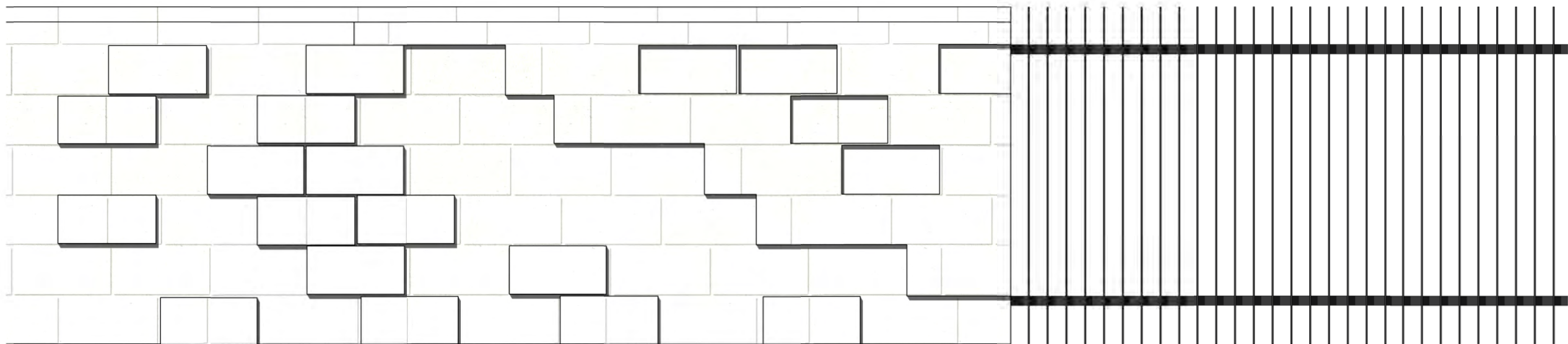


SHADOW ANALYSIS - 20 JUNE 3pm 1 : 350





**3 D VIEW**



**VIEW FROM OUTSIDE**



NORTH VIEW FROM OUTSIDE - WHITE BLOCK WALL & VERTICAL SLAT FENCE

STOCKLAND  
**AMBERTON - CHILD CARE, CNR OF INDIGO ST & HEATH AVE, AMBERTON**

**PROPOSED PERSPECTIVES**

DEVELOPMENT APPLICATION  
CONCEPT DRAWINGS ONLY & SUBJECT TO CHANGE. NEW FULL SITE RE-ESTABLISHMENT SURVEY TO BE UNDERTAKEN FOR FURTHER INFORMATION & ALL EXISTING SITE INFORMATION, INCLUDING TITLE BOUNDARIES TO BE CONFIRMED ON SITE. ALL DIMENSIONS APPROXIMATE ONLY & SUBJECT TO CHANGE.

PROJECT:  
2019-112  
DATE:  
28/02/20

DRAWING NO.  
DA14  
DRAWN BY:  
i2c

MEL  
SYD  
PER  
1800 422 533



CSA  
Christopher Senior  
and Associates



ENTRY VIEW

**STOCKLAND**  
**AMBERTON - CHILD CARE, CNR OF INDIGO ST & HEATH AVE, AMBERTON**

**PROPOSED PERSPECTIVES**

DEVELOPMENT APPLICATION

CONCEPT DRAWINGS ONLY & SUBJECT TO CHANGE. NEW FULL SITE RE-ESTABLISHMENT SURVEY TO BE UNDERTAKEN FOR FURTHER INFORMATION & ALL EXISTING SITE INFORMATION, INCLUDING TITLE BOUNDARIES TO BE CONFIRMED ON SITE. ALL DIMENSIONS APPROXIMATE ONLY & SUBJECT TO CHANGE.

PROJECT:  
2019-112  
DATE:  
25.11.19

DRAWING NO.  
DA05  
DRAWN BY:  
CFE

MEL  
SYD  
PER  
1800 422 533



CSA  
Christopher Senior  
and Associates



SOUTH WEST VIEW 1

**STOCKLAND**  
**AMBERTON - CHILD CARE, CNR OF INDIGO ST & HEATH AVE, AMBERTON**

**PROPOSED PERSPECTIVES**

DEVELOPMENT APPLICATION  
CONCEPT DRAWINGS ONLY & SUBJECT TO CHANGE. NEW FULL SITE RE-ESTABLISHMENT SURVEY TO BE UNDERTAKEN FOR FURTHER INFORMATION & ALL EXISTING SITE INFORMATION, INCLUDING TITLE BOUNDARIES TO BE CONFIRMED ON SITE. ALL DIMENSIONS APPROXIMATE ONLY & SUBJECT TO CHANGE.

PROJECT:  
2019-112  
DATE:  
25/11/19

DRAWING NO.  
DA06  
DRAWN BY:  
CFE

MEL  
SYD  
PER  
1800 422 533



CSA  
Christopher Senior  
and Associates



SOUTH WEST VIEW 2

**STOCKLAND**  
**AMBERTON - CHILD CARE, CNR OF INDIGO ST & HEATH AVE, AMBERTON**

**PROPOSED PERSPECTIVES**

DEVELOPMENT APPLICATION  
CONCEPT DRAWINGS ONLY & SUBJECT TO CHANGE. NEW FULL SITE RE-ESTABLISHMENT SURVEY TO BE UNDERTAKEN FOR FURTHER INFORMATION & ALL EXISTING SITE INFORMATION, INCLUDING TITLE BOUNDARIES TO BE CONFIRMED ON SITE. ALL DIMENSIONS APPROXIMATE ONLY & SUBJECT TO CHANGE.

PROJECT:  
2019-112  
DATE:  
25/11/19

DRAWING NO.  
DA07  
DRAWN BY:  
CFE

MEL  
SYD  
PER  
1800 422 533



CSA  
Christopher Senior  
and Associates



OUTDOOR PLAY AREA 2



OUTDOOR PLAY AREA 1

**STOCKLAND**  
**AMBERTON - CHILD CARE, CNR OF INDIGO ST & HEATH AVE, AMBERTON**

**PROPOSED PERSPECTIVES**

**DEVELOPMENT APPLICATION**

CONCEPT DRAWINGS ONLY & SUBJECT TO CHANGE. NEW FULL SITE RE-ESTABLISHMENT SURVEY TO BE UNDERTAKEN FOR FURTHER INFORMATION & ALL EXISTING SITE INFORMATION, INCLUDING TITLE BOUNDARIES TO BE CONFIRMED ON SITE. ALL DIMENSIONS APPROXIMATE ONLY & SUBJECT TO CHANGE.

PROJECT:  
2019-112  
DATE:  
25/11/19

DRAWING NO.  
DA09  
DRAWN BY:  
CFE

MEL  
SYD  
PER  
1800 422 533



CSA  
Christopher Senior  
and Associates