



Attachment Seven

Stormwater Drainage

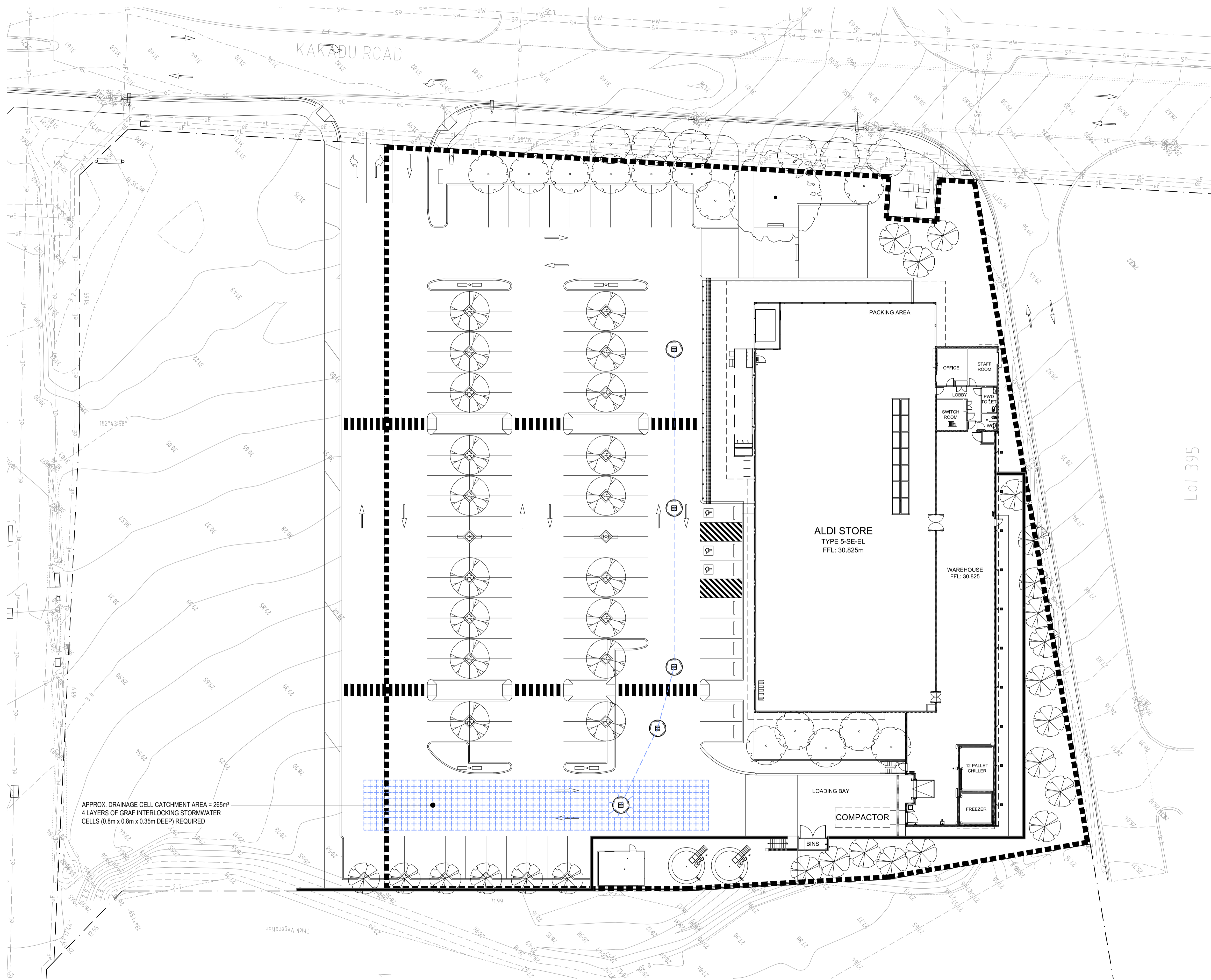
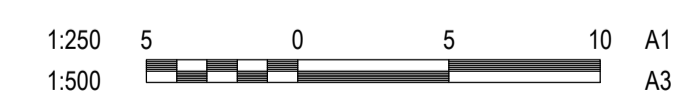


TABLE 1		
1 in 100 YEAR STORM EVENT - TOTAL CATCHMENT AREA		
REQUIRED VOLUME	360.6m3	
VOLUME PROVIDED	363.2m3	
DRAINAGE SYSTEMS	DRAINAGE SOAKWELLS	DRAINAGE CELLS ARRAY
NUMBER OF MODULES	(3x) Ø1500 x 1800 DEEP SOAKWELLS	1660 CELLS (8 ROWS x 52 LINES x 4 LAYERS)
BASE AREA	5.5m2	265m2
STORAGE VOLUME	9.93m3	353.3m3
BASE RL	28.12m	28.02m
TOP RL	29.92m	29.42m

APPROX. DRAINAGE CELL CATCHMENT AREA = 265m²
 4 LAYERS OF GRAF INTERLOCKING STORMWATER CELLS (0.8m x 0.8m x 0.35m DEEP) REQUIRED



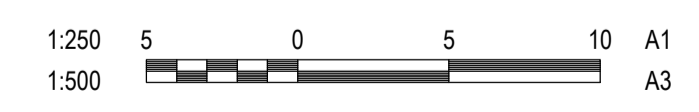
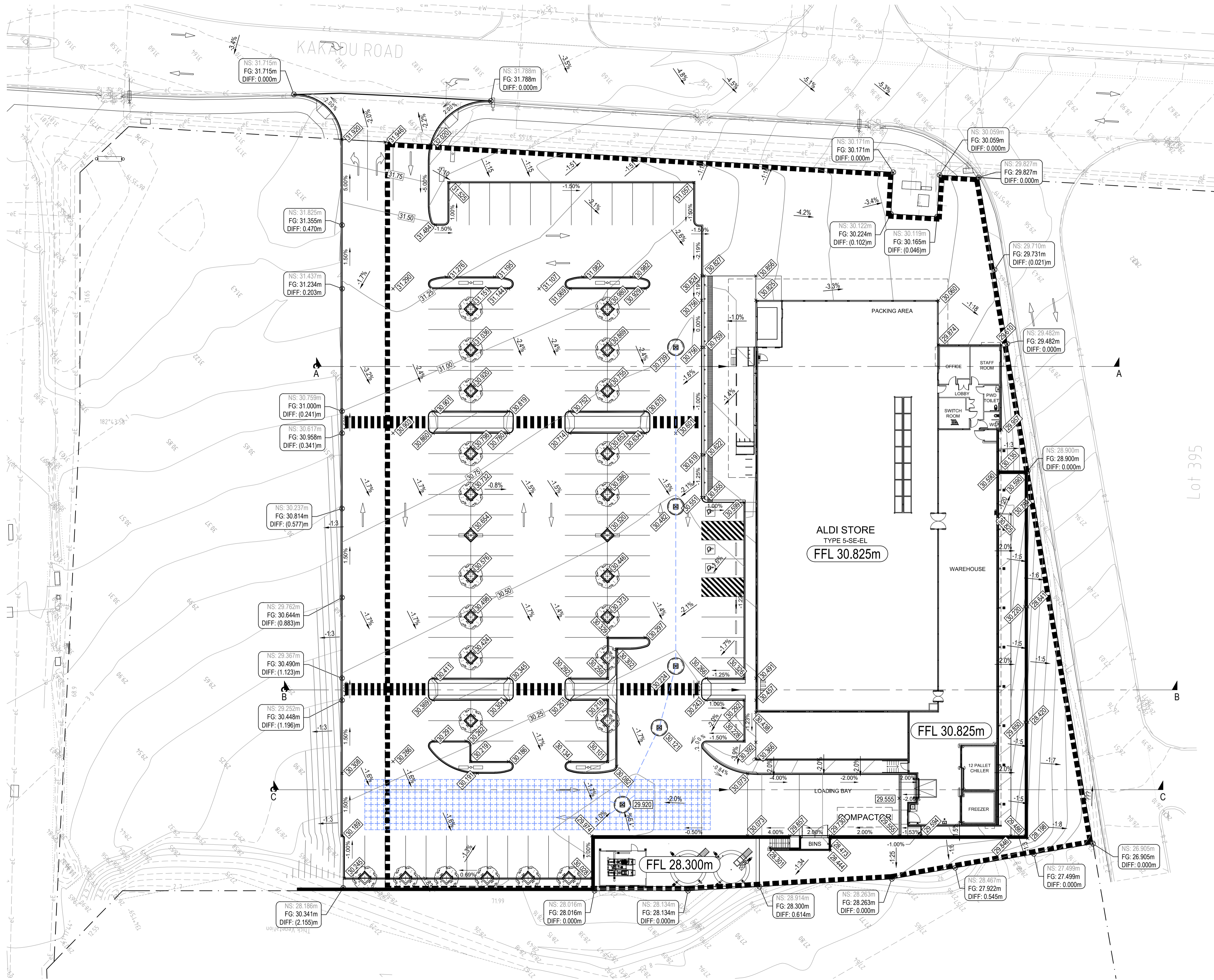
REV	DESCRIPTION	DRW	DGN	VER	APPROVED	DATE
B	ISSUED FOR INFORMATION	SCL	SCL	TJD	TJD	09/03/2020
A	ISSUED FOR INFORMATION	SCL	SCL	TJD	TJD	24/02/2020

ARCHITECT/CLIENT	

WAPC No.	COORDINATES	DATUM
	PCG94	AHD

CLIENT ALDI
PROJECT ALDI STORE - YANCHEP
TITLE OVERALL DRAINAGE PLAN

 WOOD & GRIEVE ENGINEERS NOW PART OF Stantec	 1:100@A1	INFORMATION		B REV
		NOT FOR CONSTRUCTION		
PROJECT No.	46104-1	DRAWING No.	CI-520-DR-P1	



REV	DESCRIPTION	DRW	DGN	VER	APPROVED	DATE
A	ISSUED FOR INFORMATION	SCL	SCL	TJD	TJD	24/02/2020

ARCHITECT/CLIENT	
------------------	--

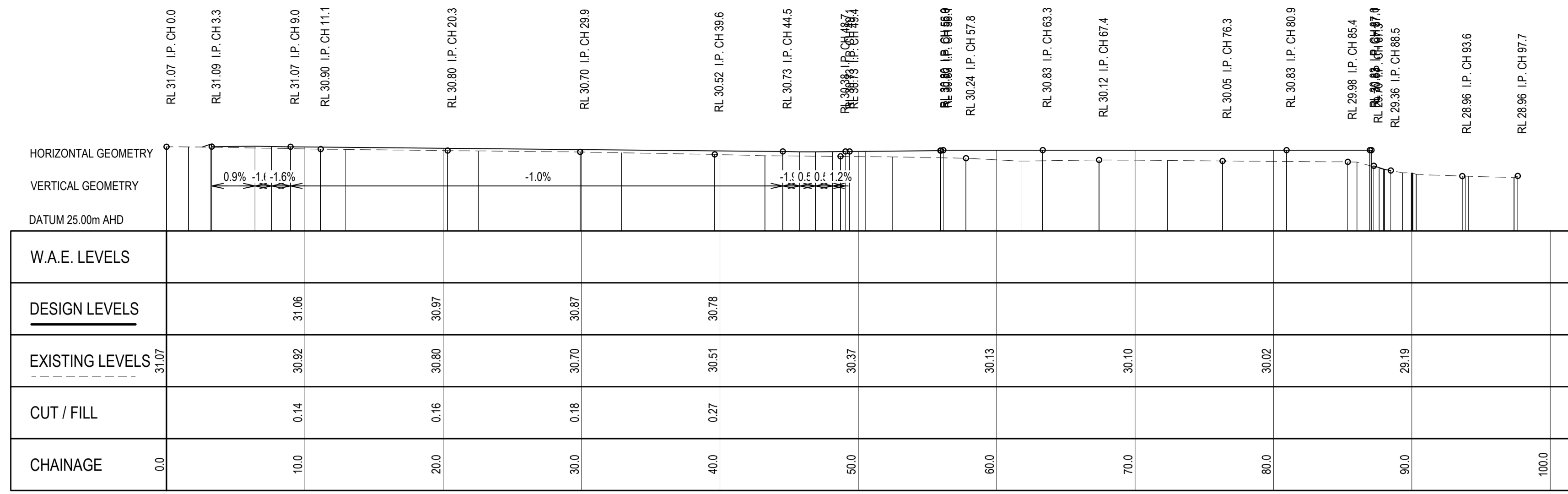
WAPC No.	PCG94	AHD
	COORDINATES	DATUM

CLIENT	ALDI
PROJECT	ALDI STORE - YANCHEP
TITLE	OVERALL PAVEMENT GRADING PLAN

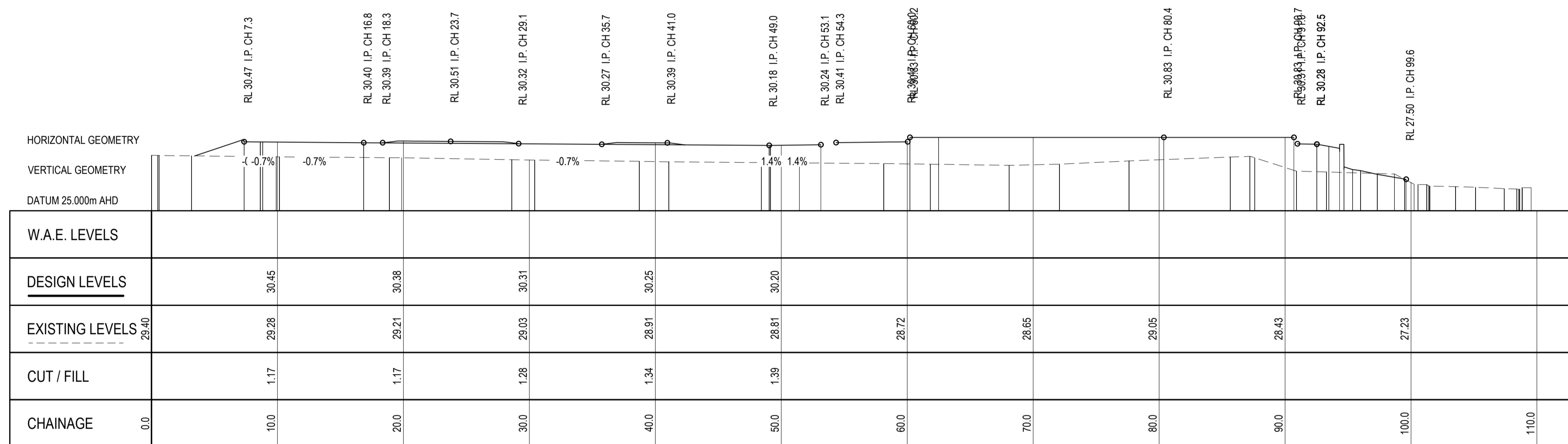


INFORMATION		NOT FOR CONSTRUCTION	
PROJECT No.	46104-1	DRAWING No.	CI-060-SI-P1
REV			A

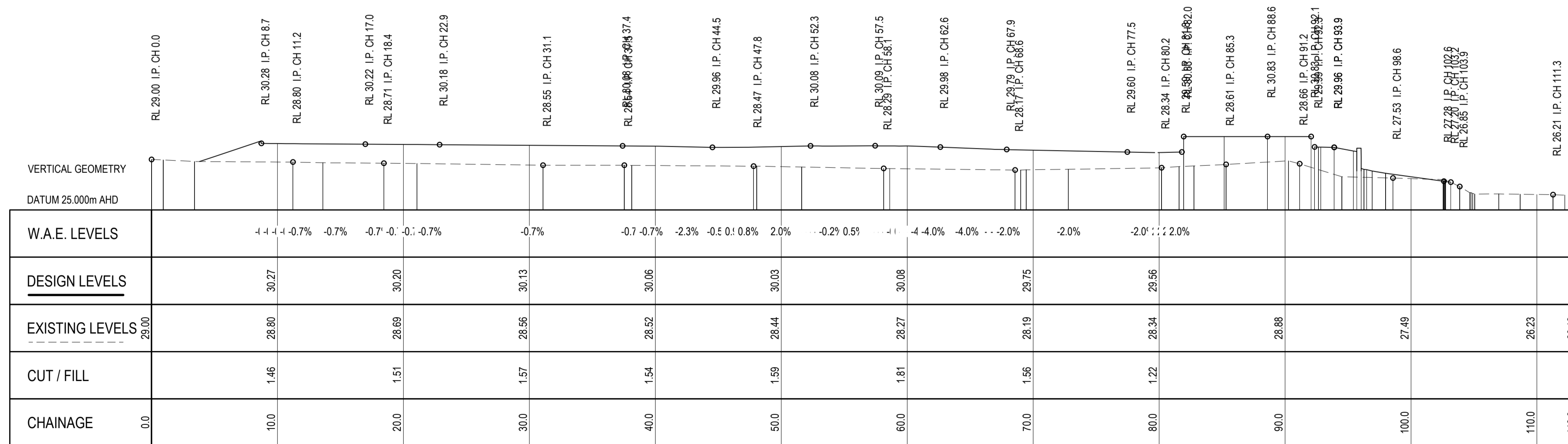
P:\46104-1\Project Documentation\Civil\Drawings & Design\46104-1-CI-060-SI-P1_A.dwg



A - LONG SECTION
 HORIZONTAL SCALE 1:250
 VERTICAL SCALE 1:250



B - LONG SECTION
 HORIZONTAL SCALE 1:250
 VERTICAL SCALE 1:250



C - LONG SECTION
 HORIZONTAL SCALE 1:250
 VERTICAL SCALE 1:250



REV	DESCRIPTION	DRW	DGN	VER	APPROVED	DATE
A	ISSUED FOR INFORMATION	SCL	SCL	TJD	TJD	24/02/2020

WAPC No.	COORDINATES	DATUM
	PCG94	AHD

CLIENT	PROJECT	TITLE
ALDI	ALDI STORE - YANCHEP	OVERALL PAVEMENT GRADING PLAN

INFORMATION
 NOT FOR CONSTRUCTION

1:100@A1	46104-1	CI-062-SI-L1	A
PROJECT No.	DRAWING No.	REV	