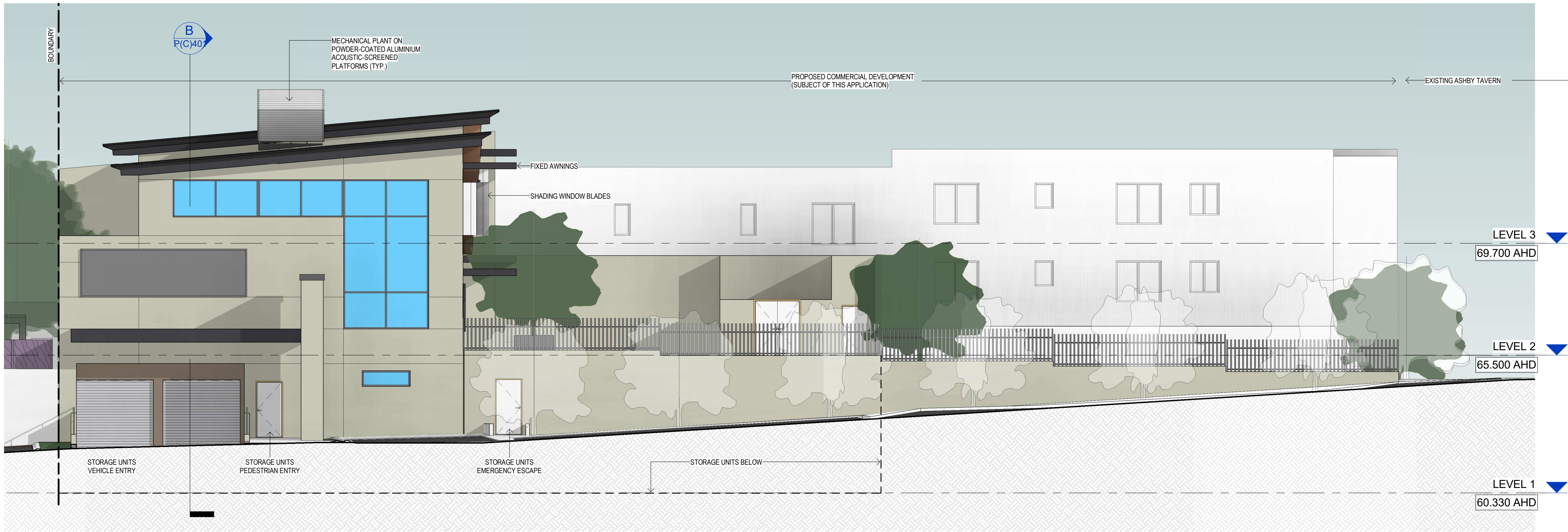


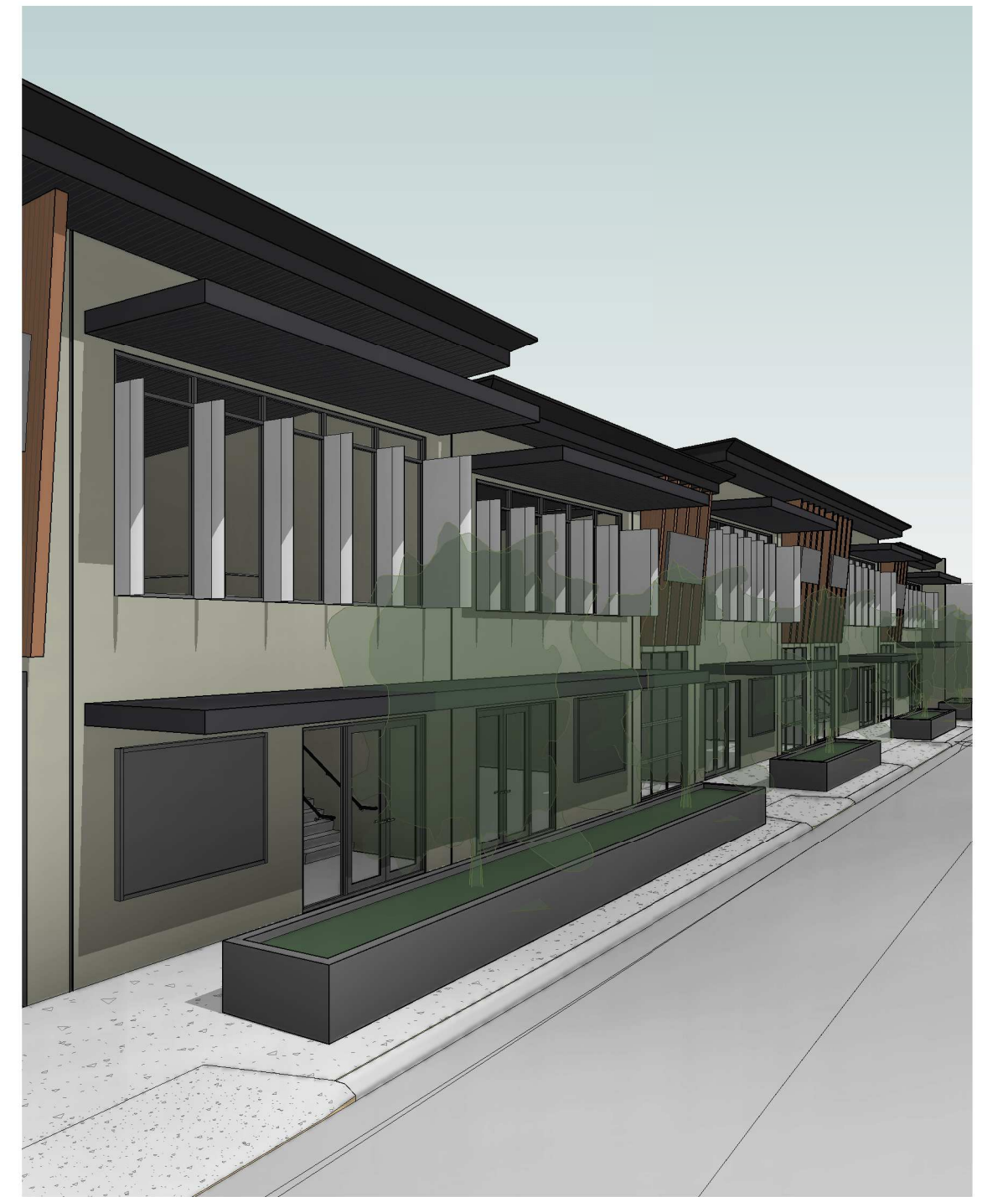
1 EAST ELEVATION  
SCALE: 1 : 100



5 STORAGE UNITS ENTRY RAMP  
SCALE:



2 SOUTH ELEVATION  
SCALE: 1 : 100

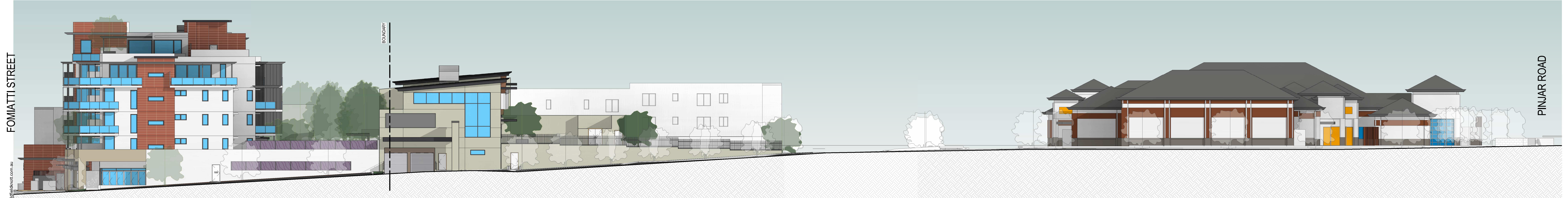


4 EASTERN WINDOW SHADING  
SCALE:

PROPOSED MIXED USE - 06177D

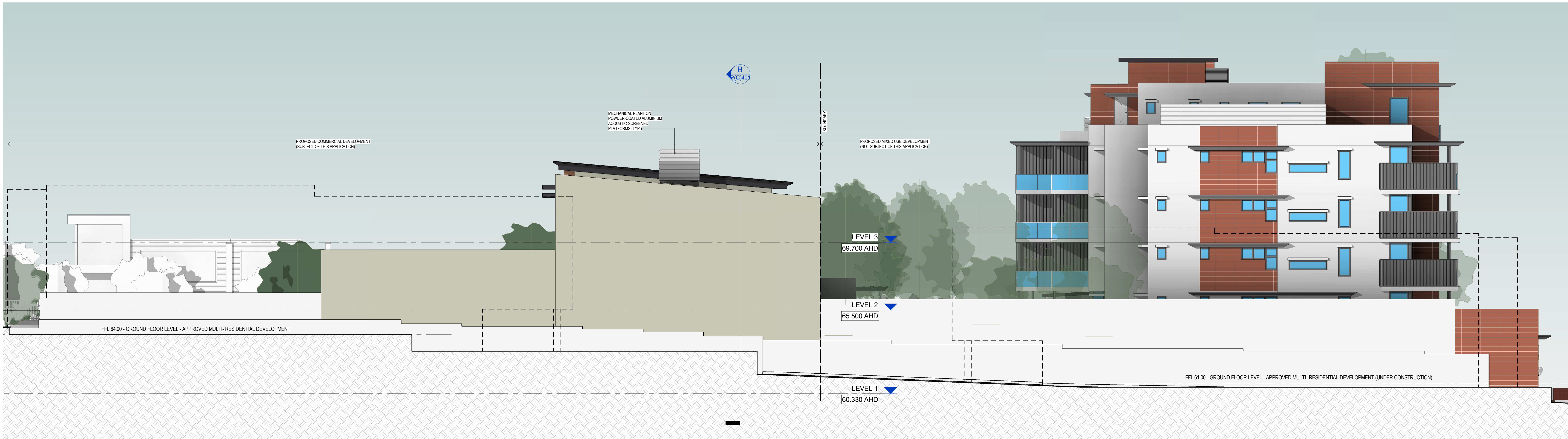
PROPOSED COMMERCIAL DEVELOPMENT

EXISTING ASHBY TAVERN

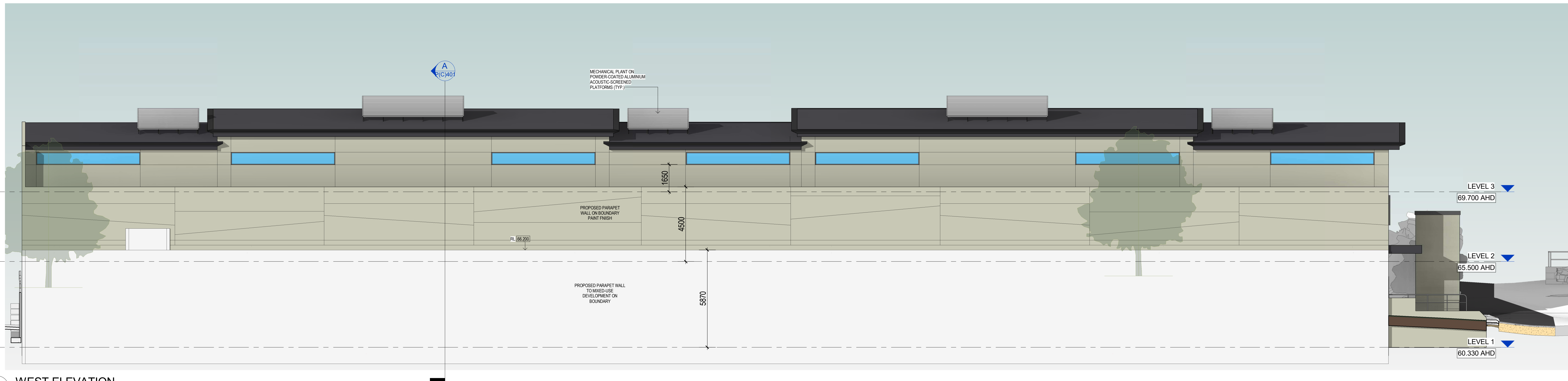


3 SOUTH ELEVATION - CONTEXT  
SCALE: 1 : 200





1 NORTH ELEVATION  
SCALE: 1 : 100



2 WEST ELEVATION  
SCALE: 1 : 100

Rev.	Date	Issued By	Revision Description
D	05-12-2019	RC	CONSULTANT REVIEW
C	05-08-2019	DG/RC	DESIGN REVIEW PANEL APPLICATION
B	12-06-2019	DG/RC	DESIGN REVIEW PANEL APPLICATION
A	16-04-2019	DG/RC	DESIGN REVIEW PANEL APPLICATION

Project Name  
**PROPOSED COMMERCIAL TENANCIES &  
SELF STORAGE UNITS, Lot 3 Blackberry Drive,  
ASHBY WA 6065**

Drawing Name  
**ELEVATIONS**

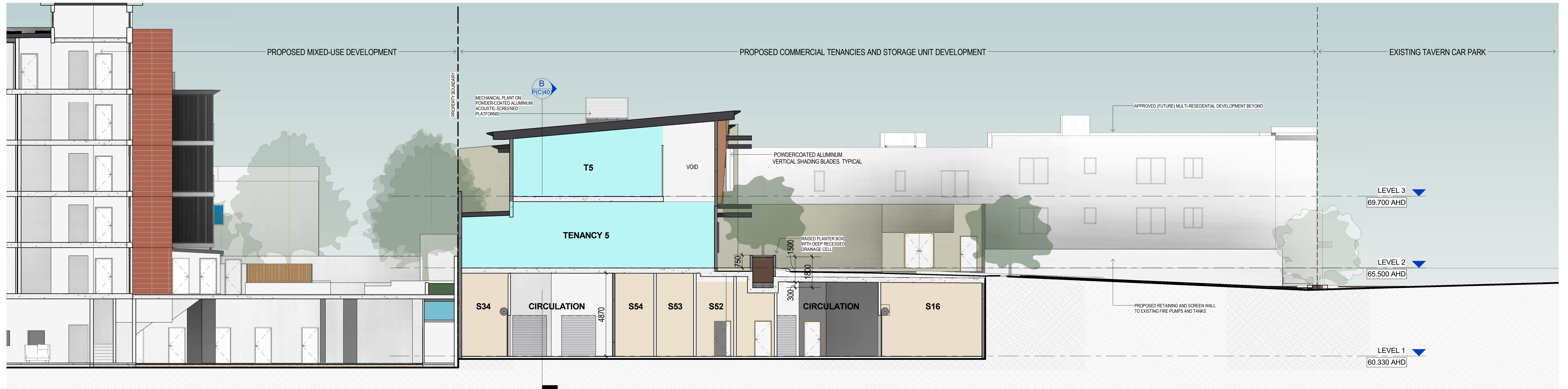
Project Number  
**06177C**

Drawing No.  
**P(C)302**  
Rev.  
**D**

Reduction  
25mm on B1  
Scale  
1 : 100  
Date

2019  
Drawn  
DG/RC  
Checked  
FI  
C:\Revit Temp\06177C-Corrm Dev\_Oldfieldknott





**A SOUTH SECTION**  
SCALE: 1 : 100



**B WEST SECTION**  
SCALE: 1 : 100

Rev.	Date	Issued By	Revision Description
D	05-12-2019	RC	CONSULTANT REVIEW
C	05-08-2019	DG/RC	DESIGN REVIEW PANEL APPLICATION
B	12-06-2019	DG/RC	DESIGN REVIEW PANEL APPLICATION
A	16-04-2019	DG/RC	DESIGN REVIEW PANEL APPLICATION

Project Name  
**PROPOSED COMMERCIAL TENANCIES &  
SELF STORAGE UNITS, Lot 3 Blackberry Drive,  
ASHBY WA 6065**

Drawing Name  
**SECTIONS**

Reduction 25mm on B1 | Scale 1 : 100 | Date

Project Number  
**06177C**

Drawing No.  
**P(C)401**

Rev.  
**D**





# Lot 9633 Apartments : Ashby Village Overall Development Plan

Rev E

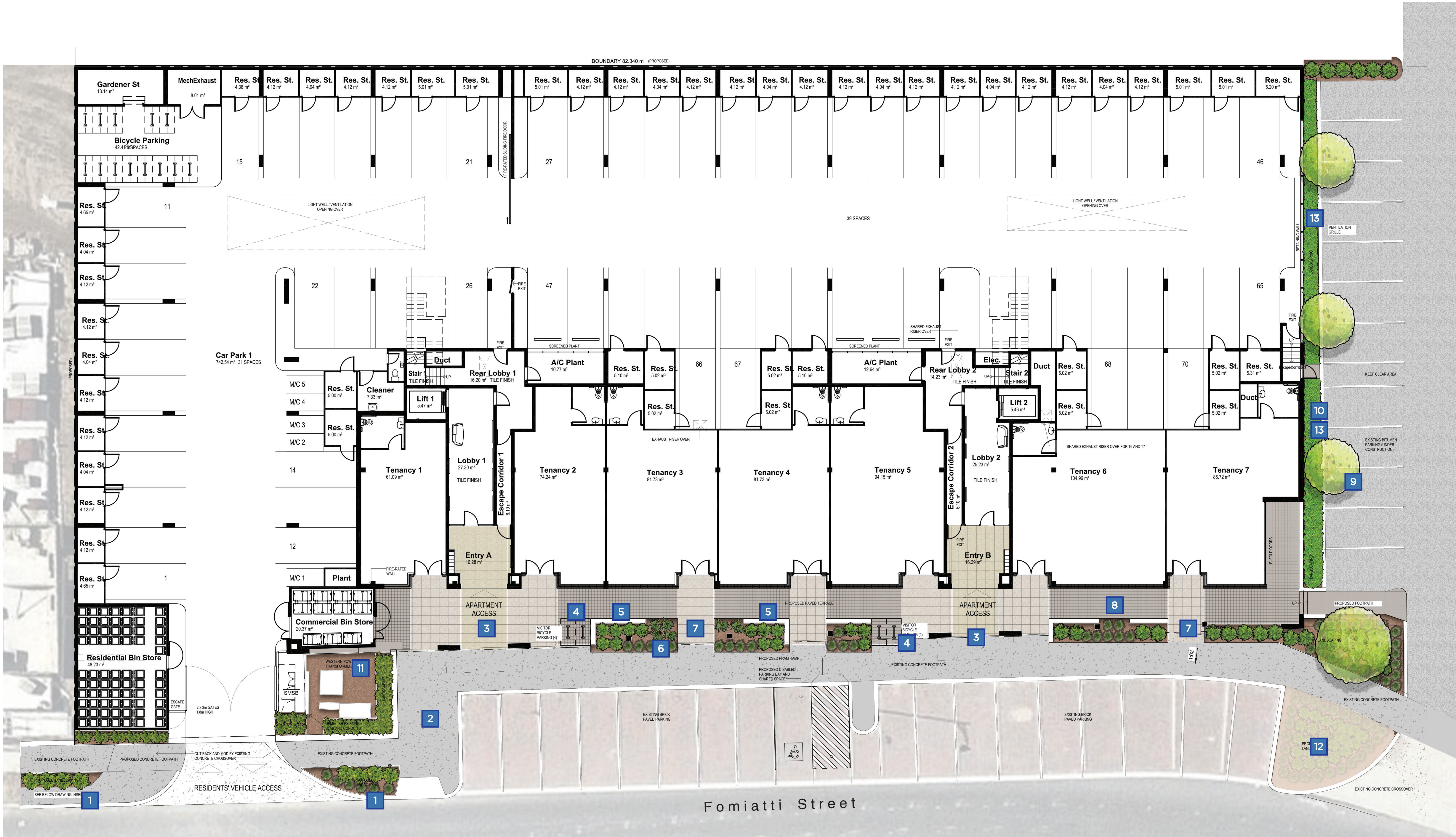


scale : 1 : 600 @ A1 date : January 2020

The information contained in this document are the copyright of EPCAD Pty Ltd. Use or copying of the document in whole or part without the written permission of EPCAD Pty Ltd constitute an infringement of copyright.  
EPCAD Pty Ltd ACN 093 476 334 ABN 26 093 476 334  
28-30 Mayfair Street, West Perth, WA 6005, PO Box 1233, West Perth WA  
461 8 9481 4410 epcad@epcad.com.au







The overall landscape theme of Ashby Apartments takes inspiration from the old vineyard that was located within the area. The use of brick, charcoal post, wood planks and honed concrete walls brings the past into a modern contemporary character complementing the new architectural aesthetic.

The landscape area is divided into small intimate spaces.

An open grassed space provides a large area for multipurpose use. A shade shelter is located in the center of the level one deck, with BBQ amenities and a large picnic table for users to hold large gatherings.

A community edible garden is also provided to give tenants the opportunity to grow their own herbs and vegetables within raised planter box. Fruiting trees are dotted throughout the deck level and a grapevine hedge is lined together with an arbour allowing the vines to climb and spread horizontally along ronian cables.

## Legend

- 1 Low native planting to council standards. Provide 600mm mulch only setback.
- 2 Grey concrete footpath as according to City of Wanneroo Standards.
- 3 Feature coloured and textured paving to main entrance of building.
- 4 Bicycle Racks for 4 bikes.
- 5 Low concrete seat wall to edge of garden bed with skate stoppers.
- 6 Low native planting to edge of footpath.
- 7 Secondary coloured and textured paving to retail area.
- 8 Corridor paving.
- 9 Medium sized trees along parking bay.
- 10 Low ground cover to edge of parking bays.
- 11 Mulched area.
- 12 Existing garden bed.
- 13 Ronstan cabling system with vines to south facing wall

## PLANTING LIST

### GROUND FLOOR

#### Trees:

- Agonis flexuosa
- Callistemon viminalis

#### Shrubs:

- Callistemon 'Little John'
- Conostylis candicans
- Dampiera linearis 'Colbolt Mound'
- Pelargonium x hortorum 'Big Red'
- Dianella caerulea 'Little Jess'

- Liriope muscari
- Pelargonium x hortorum 'Geranium Nano White'
- Pittosporum crassifolium 'Compactum'
- Rahlolopsis indica 'Cosmic White'
- Trachelospermum jasminoides

#### ROOFTOP

#### Trees:

- Juniperus chinensis 'Spartan'
- Lagerstroemia indica
- Magnolia grandiflora 'Teddy Bear'
- Olea europaea - Olive

- Prunus cerasifera 'Crimson Spire'
- Pyrus calleryana 'Bradford'
- Pyrus calleryana 'Capital'

#### Shrubs:

- Casuarina glauca 'Cousin It'
- Convolvulus cneorum
- Cycas revoluta
- Lavandula 'Ghastly Princess'
- Lavandula 'The Princess'
- Lonicera heckrottii 'Goldflame'
- Lophomyrtus x ralphii 'Red Dragon'
- Loropetalum chinense 'Crimson Fire'
- Morus alba 'Chaparral'

- Liriope muscari
- Murraya paniculata
- Pelargonium x hortorum 'Big Red'
- Pelargonium x hortorum 'Geranium Nano White'
- Rahlolopsis indica 'Cosmic Pink'
- Rosmarinus officinalis 'Tuscan Blue'
- Russelia equisetiformis 'Dwarf Form'
- Syzigium australe 'Pinnacle'
- Trachelospermum jasminoides
- Vitis vinifera 'Grape Vine'

#### EDIBLE GARDEN

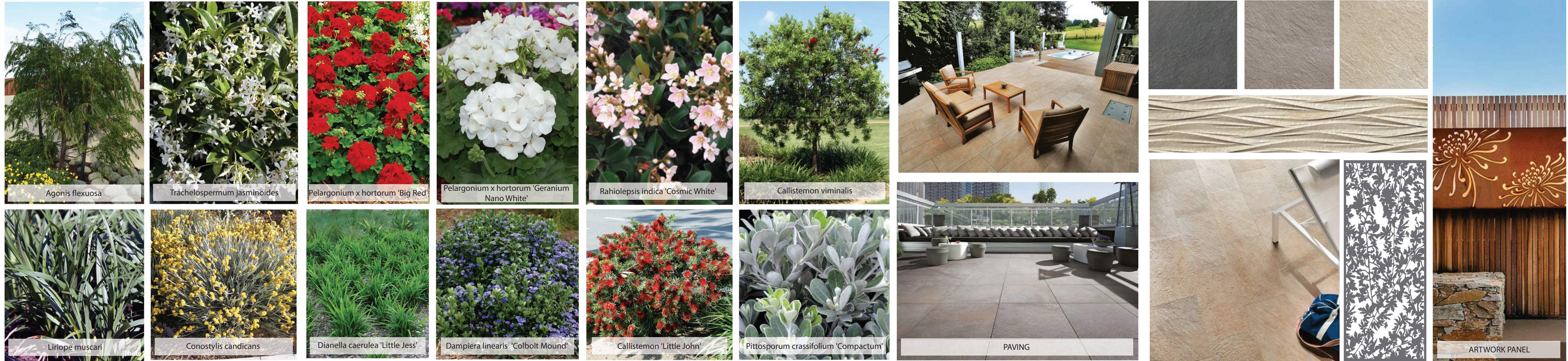
- Citrus japonica 'Nagami' Kumquat
- Citrus limon 'Eureka'
- Coriandrum sativum 'Coriander/Cilantro'
- Ficus carica 'Brown Turkey' Fig Tree
- Ficus carica 'Black Genoa' Black Fig
- Fragaria x ananassa 'Millewa'

- Mentha suaveolens 'Apple Mint'
- Ocimum basilicum 'Basil'
- Origanum vulgare 'Oregano'
- Petroselinum crispum 'Parsley'
- Rheum rhabarbarum 'Crimson Red Rhubarb'
- Thymus vulgaris - 'Thyme'

#### TYPICAL BALCONY

- Casuarina glauca 'Shagpile'
- Trachelospermum jasminoides

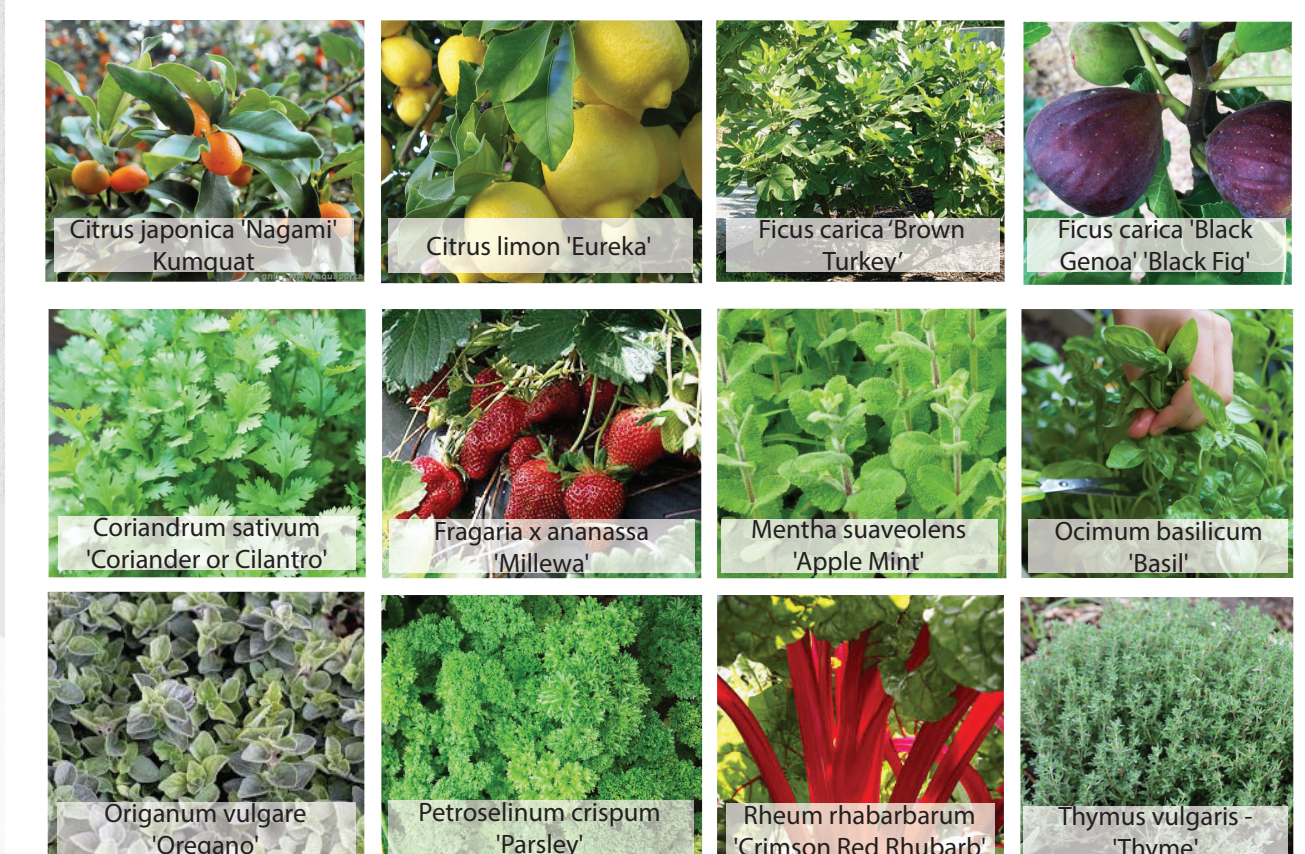
- Pittosporum tobira 'Nana'







- ### Legend
- 1 Open lawn area for multi purpose use.
  - 2 Terraced planter box.
  - 3 Wall mounted seat.
  - 4 Mechanical chase with wood slat panelling.
  - 5 Intimate node with shade structure & picnic table with bench seating.
  - 6 Tiered planter box with large tree.
  - 7 Pine tree to cover high wall.
  - 8 Feature paver to deck.
  - 9 Large deciduous tree in large planter box with wall mounted seating. Low planter box with low shrubs to base of main planter box.
  - 10 Grapevine with arbour. Ronstan cables allow plants to climb the structure creating a vineyard corridor. Interpretive signage tells the story of the old winery located previously on site.
  - 11 Low day bed.
  - 12 Medium hedging plant to screen terrace wall.
  - 13 Fruiting trees in planter box.
  - 14 Long picnic table catering to 12-14 people.
  - 15 Shade structure with interpretive signages.
  - 16 Outdoor BBQ and sink amenities.
  - 17 Feature artwork (by nominated artist)
  - 18 Herb garden wall in wooden boxes.
  - 19 Edible garden planter box. Allowing tenants to grow a variety of edible plants.
  - 20 Low hanging shrubs to balcony edge with small tree.
  - 21 Low hanging shrub to typical balcony edge.
  - 22 Slatted fence to planter wall around void







ARTIST IMPRESSION PERSPECTIVE ONE - Open grassed area for multi purpose use.



ARTIST IMPRESSION PERSPECTIVE TWO - Grapevine arbour and shade shelter with large picnic table and day bed furniture.



ARTIST IMPRESSION PERSPECTIVE THREE - View of large planter box and arbour within the central deck area .



ARTIST IMPRESSION PERSPECTIVE FOUR - View of the Community edible garden area.

GENERAL NOTE : PLANTING TO PERSPECTIVE IS ONLY INDICATIVE AND WILL LIKELY CHANGE ON AVAILABILITY DURING CONSTRUCTION.