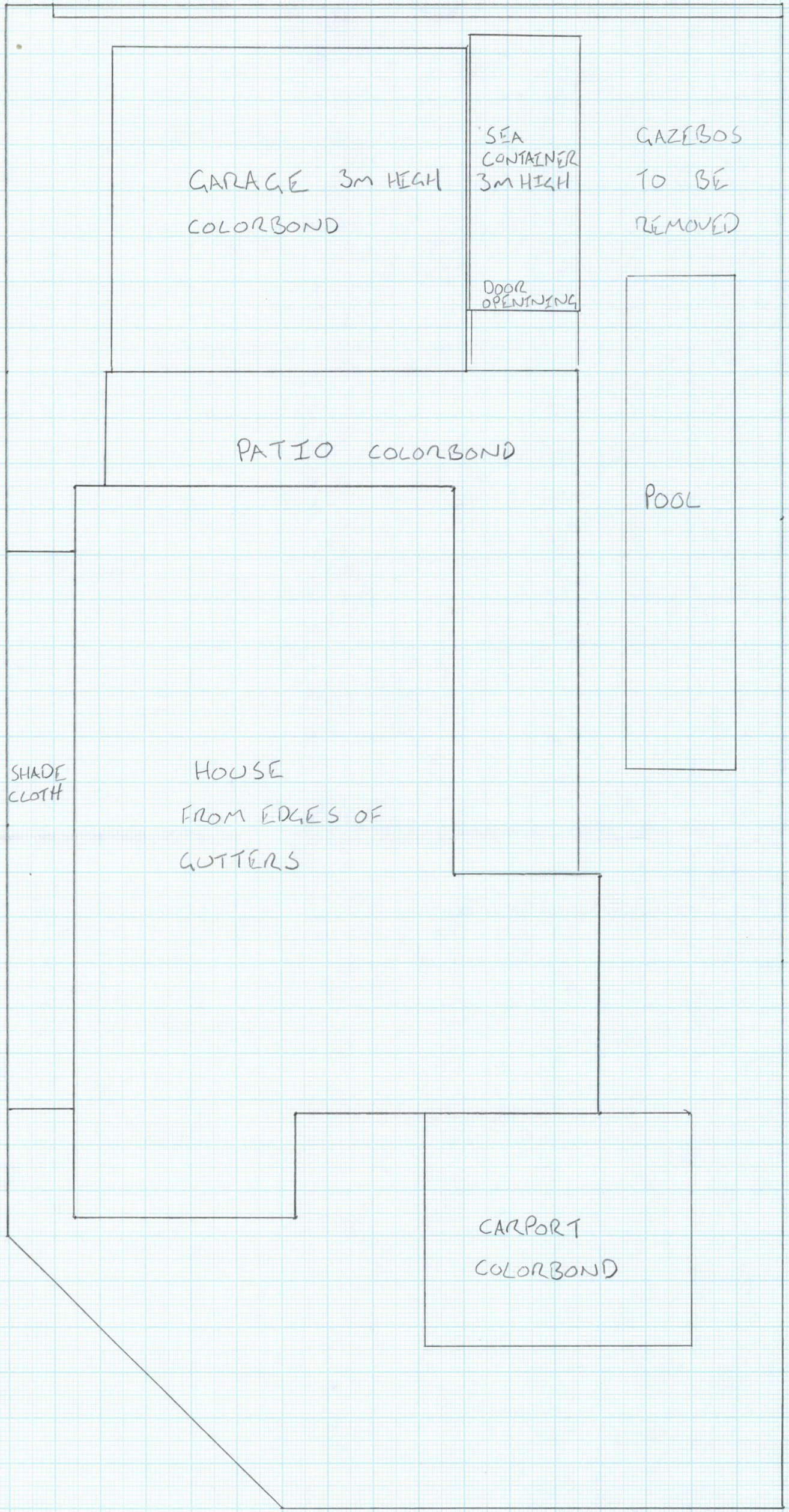


N

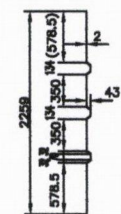
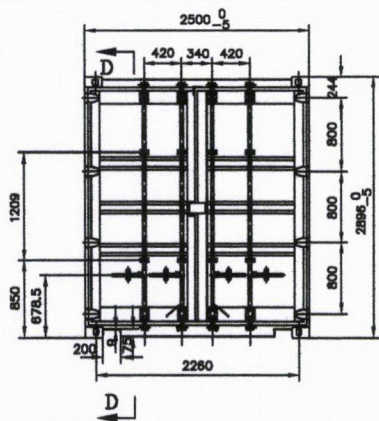
- HOUSE = 141m²
- PATIO = 48m²
- CARPORT = 30m²
- GARAGE = 55m²
- SEA CONTAINER = 15m²



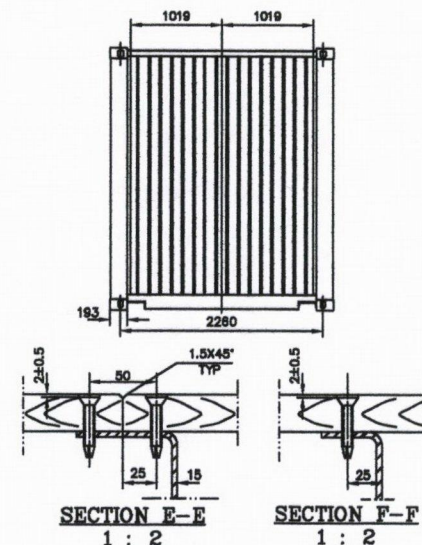
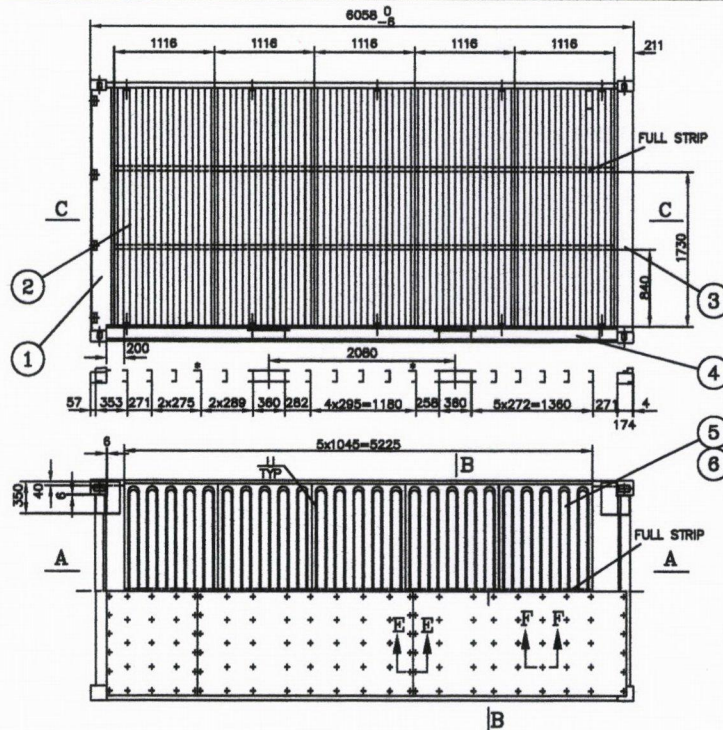
W

E

5.5m

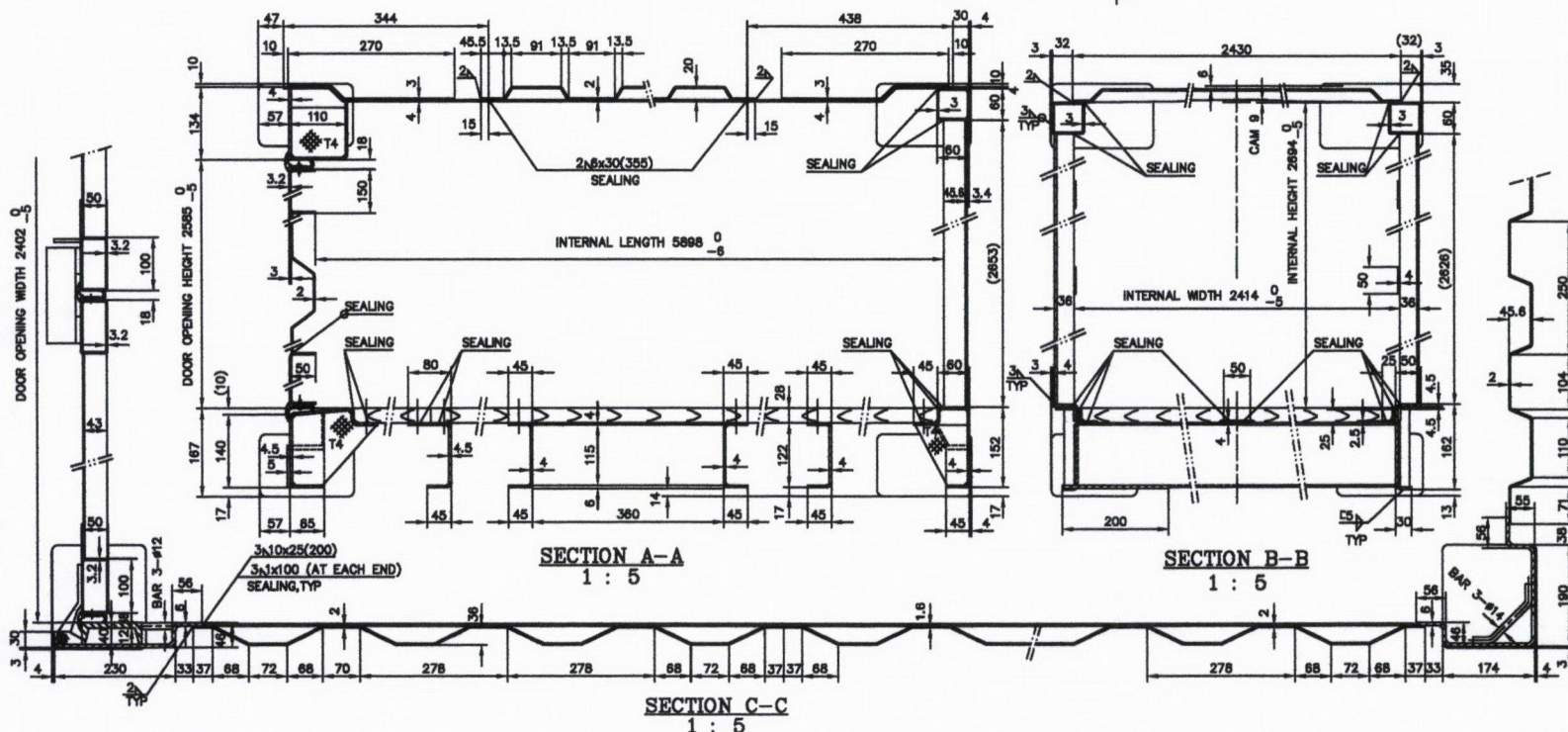


SECTION D-D



SECTION E-E
1 : 2

SECTION F-F
1 : 2



SECTION A-A
1 : 5

SECTION B-B
1 : 5

SECTION C-C
1 : 5

CLASSIFICATION		DIMENSION	
EXTERNAL	LENGTH	6058 ⁰ / ₋₈	19' -10 1/2" ⁰ / _{-15/84"}
	WIDTH	2500 ⁰ / ₋₅	8' -2 27/84" ⁰ / _{-3/16"}
	HEIGHT	2886 ⁰ / ₋₅	9' -6" ⁰ / _{-3/16"}
INTERNAL	LENGTH	5898 ⁰ / ₋₈	18' -4 13/84" ⁰ / _{-15/84"}
	WIDTH	2414 ⁰ / ₋₅	9' -1 1/32" ⁰ / _{-3/16"}
	HEIGHT	2694 ⁰ / ₋₅	9' -1 1/32" ⁰ / _{-3/16"}
DOOR OPENING	WIDTH	2402 ⁰ / ₋₅	8' -10 1/32" ⁰ / _{-3/16"}
	HEIGHT	2585 ⁰ / ₋₅	8' -5 49/84" ⁰ / _{-3/16"}
INTERNAL CUBIC CAPACITY		38.4 M ³	1365 FT ³

MAX GROSS WEIGHT	30480 KGS	67200 LBS
TARE WEIGHT	2380 KGS	5250 LBS
MAX PAY LOAD	28100 KGS	61950 LBS
STACKING TEST LOAD	86400 KGS	192000 LBS
FLOOR STRENGTH	7280 KGS	16000 LBS

6	MARKING ARRANGEMENT	GGPOC20-M	1	
5	ROOF ASSEMBLY	GGPOC20-R	1	
4	BASE ASSEMBLY	GGPOC20-B	1	
3	FRONT END ASSEMBLY	GGPOC20-F	1	
2	SIDE WALL ASSEMBLY	GGPOC20-S	2	
1	REAR END ASSEMBLY	GGPOC20-E	1	
REV	DESCRIPTION	DWG NO.	REMARK	QTY.

TITLE: 20'x2500MMx9'6" GENERAL ARRANGEMENT				
CUSTOMER:	L-DONE	SCALE:	1 : 30	
DESIGNED BY:	ZYA Dec.14,2007	WEIGHT:	EG. QTY.: 1	
CHECKED BY:	HJY Dec.14,2007	DWG No.:	GGPOC20-G	
APPROVED BY:	YG Dec.14,2007			
SHEET:	OF	SHEETS	ISSUE:	07A-00

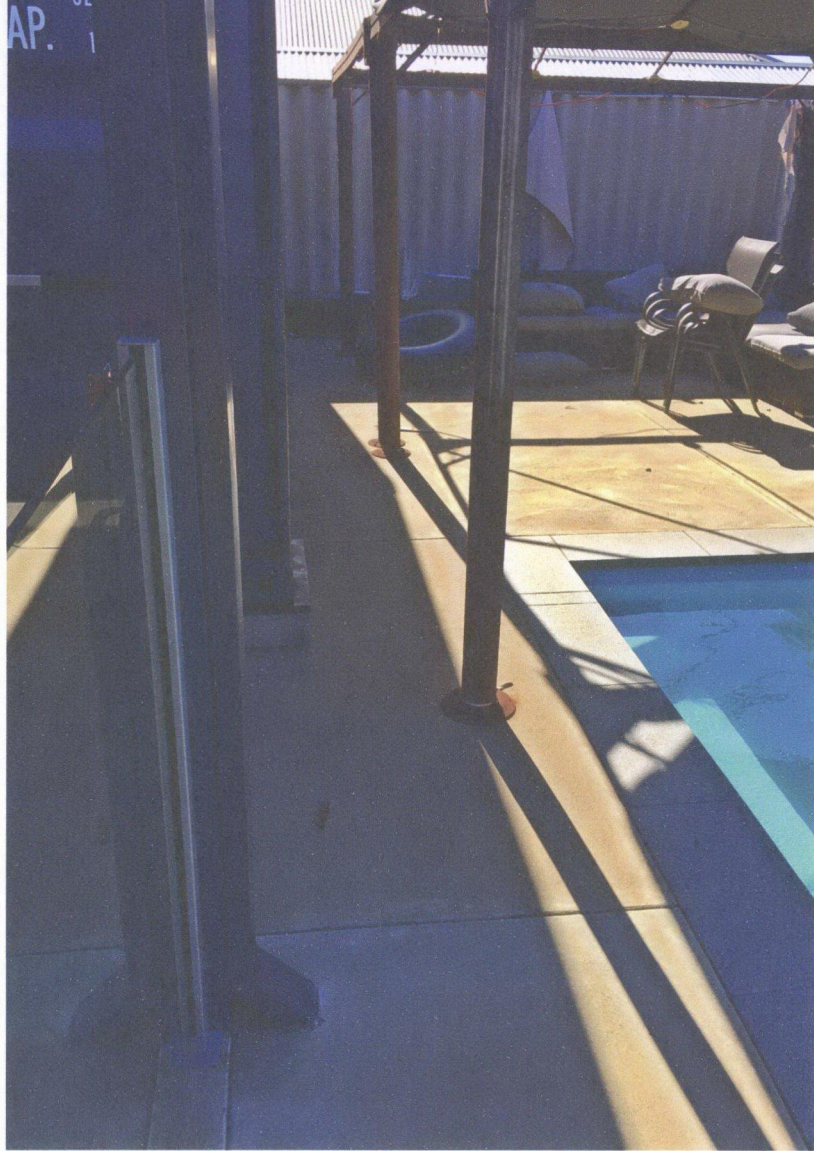
CIMC THIS DRAWING AND ALL COPIES THEREOF ARE CONFIDENTIAL AND THE PROPERTY OF CIMC. ANY PART OF THE DRAWING SHALL NOT BE COPIED, REPRODUCED, DISCLOSED OR DISTRIBUTED TO ANY PARTY WITHOUT PRIOR WRITTEN APPROVAL FROM CIMC.



SIDE OF HOUSE VIEW



FRONT VIEW OF SEA CONTAINER



BUNNINGS
GAZEBOS TO BE
REMOVED



CONTAINER
AGAINST EXISTING
GARAGE



BACK OF SEA CONTAINER



VIEW FROM NEIGHBOURS FRONT DRIVE



DOOR OPENING
BETWEEN FENCE



CUSTOM CONCRETE/STEEL
FOOTINGS

RUBBER

