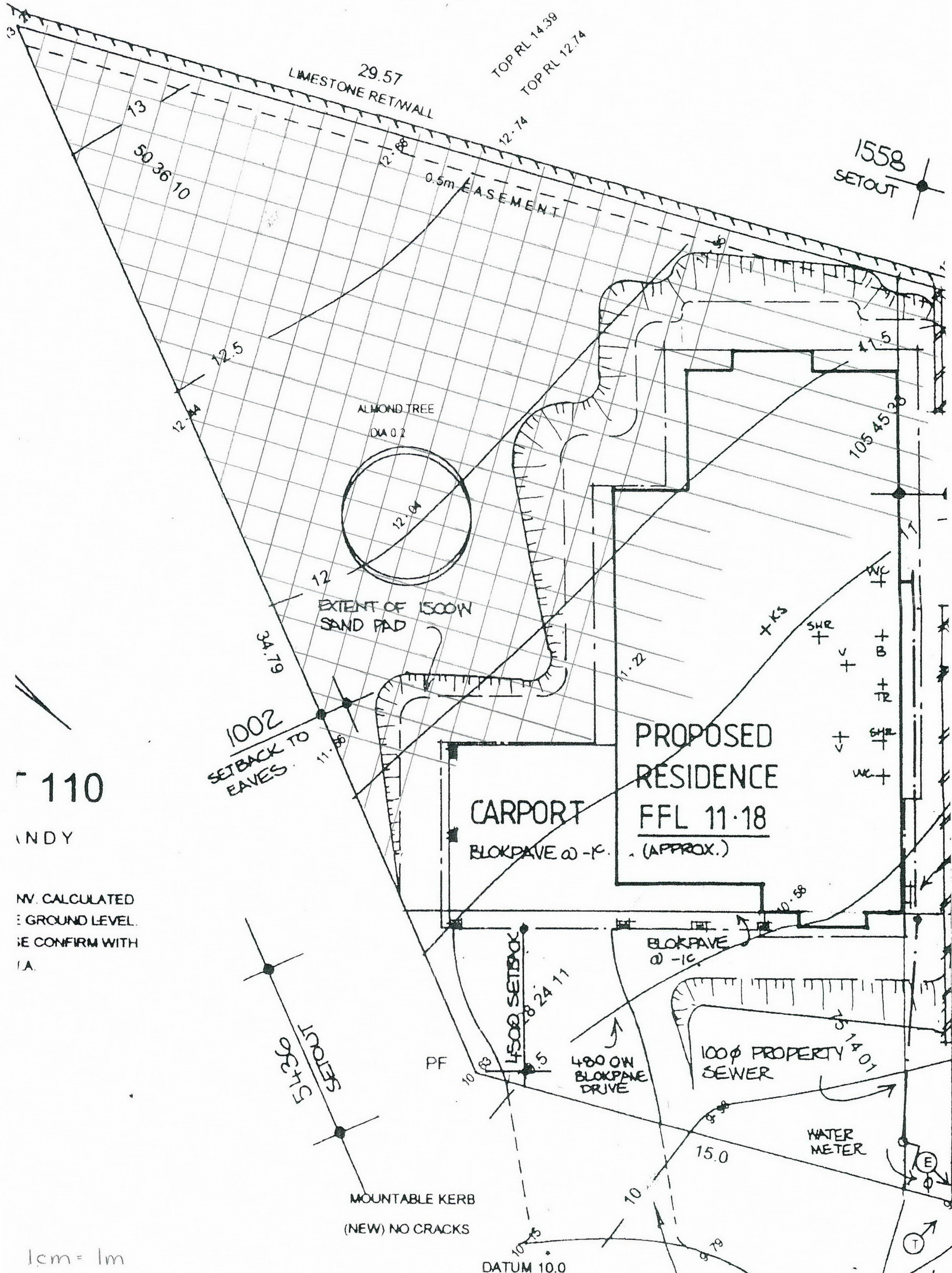


OP R.
TOP RL



1558
SETOUT

110

NDY

NOV. CALCULATED
GROUND LEVEL.
PLEASE CONFIRM WITH
P.A.

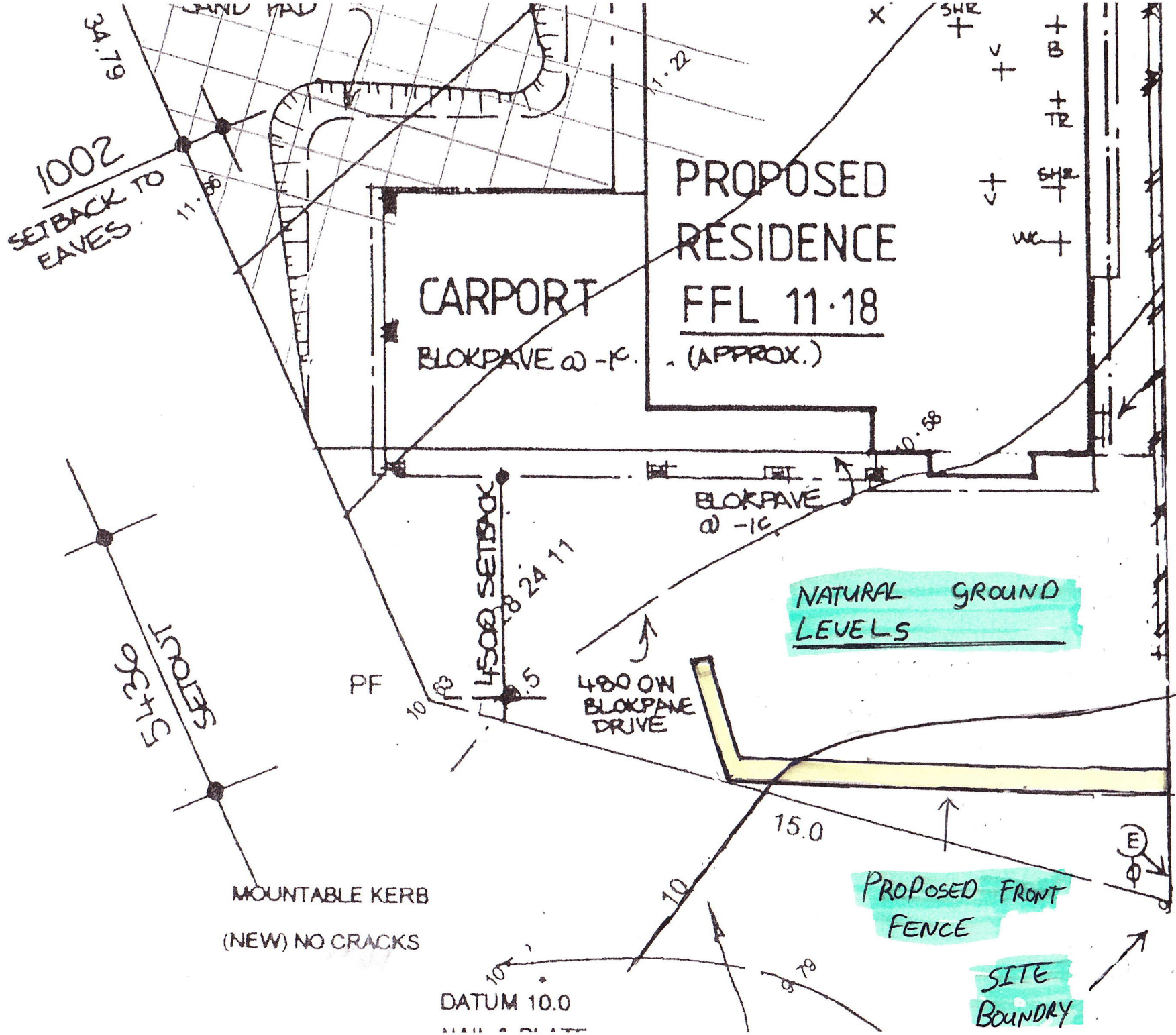
1cm = 1m

10

Y

ALCULATED
XUND LEVEL.
NFIRM WITH

n = 1m



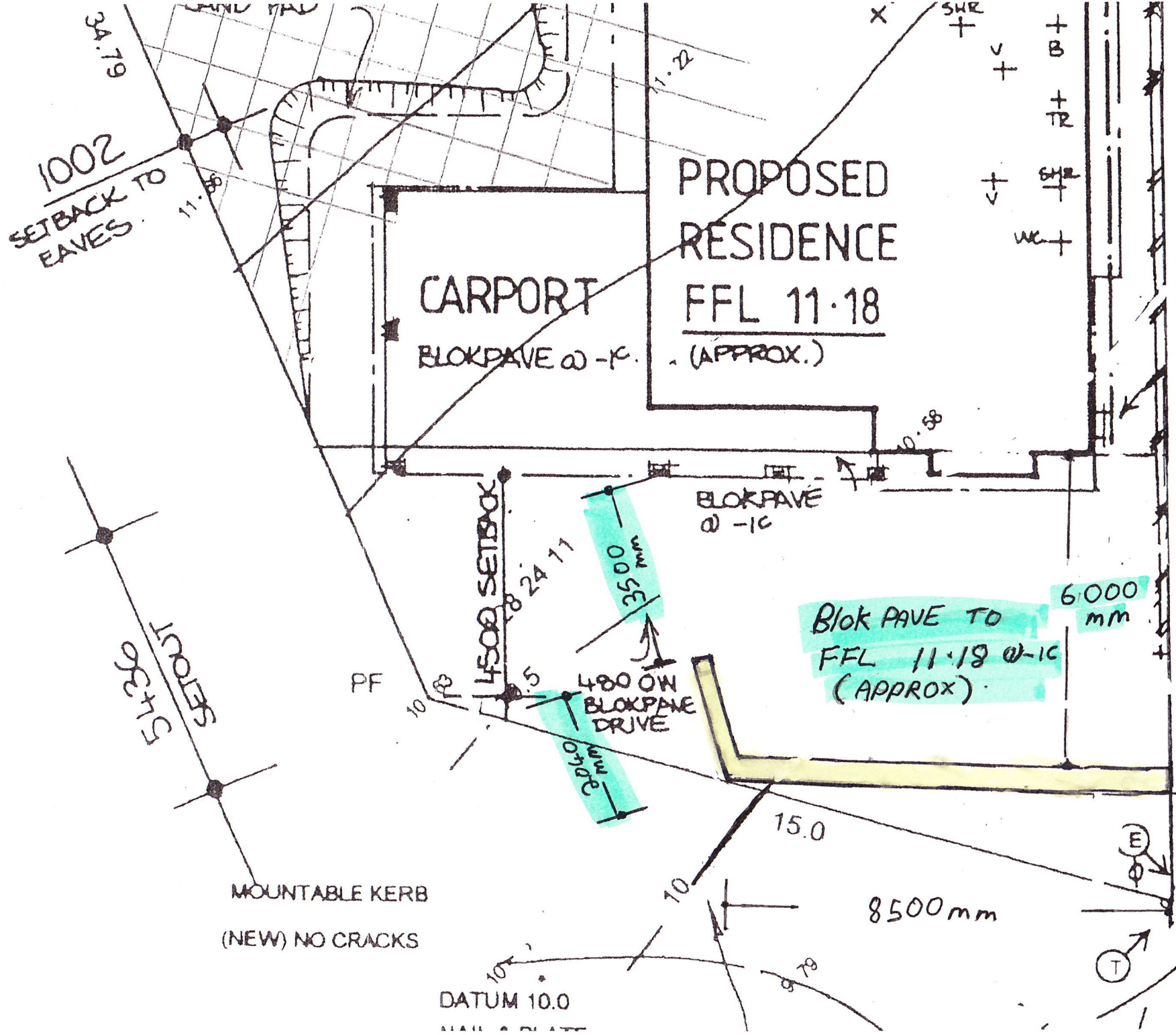
DATUM 10.0

MAIL PLATE

10

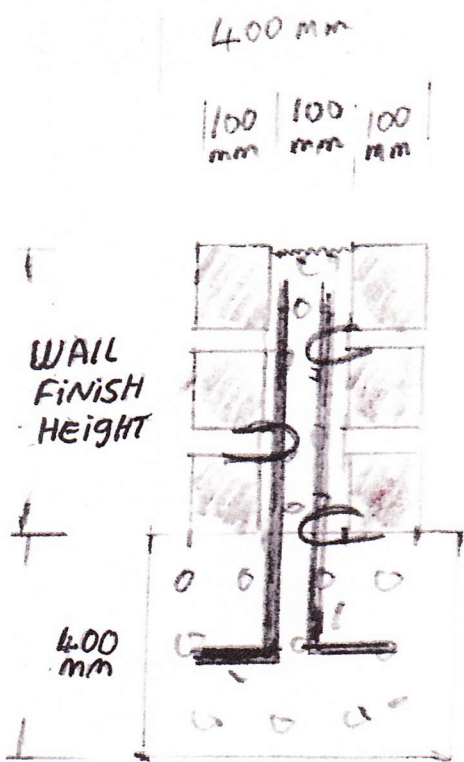
ALCULATED
DUND LEVEL.
NFIRM WITH

n = 1m



Footings

NOTES

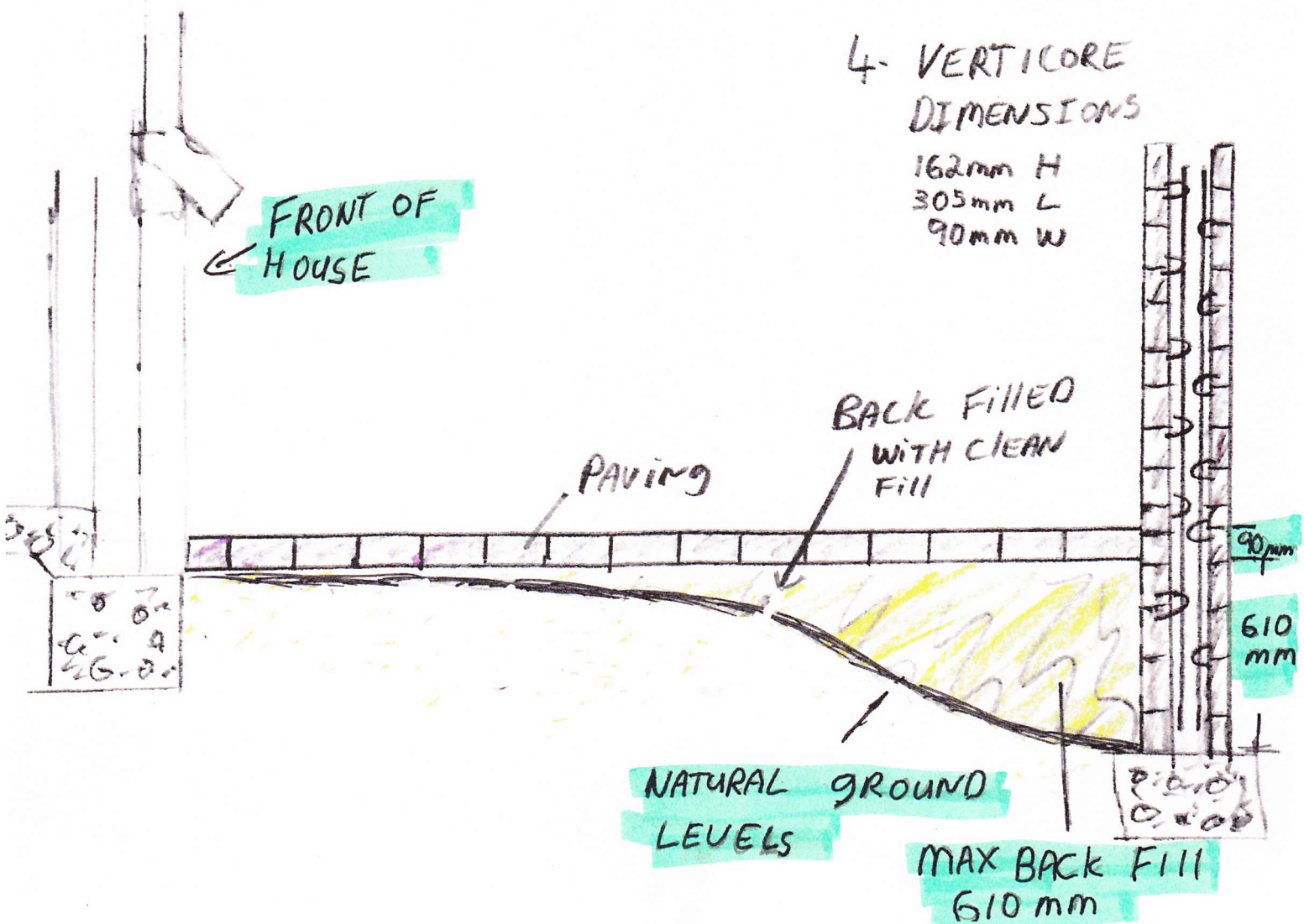


-  VERTICORE BRICK
-  CONCRETE
-  10mm BAR
-  BRICK TIES

1. Footings TO BE 400mm X 300mm DEEP CONCRETE
2. 10mm BAR + BRICK TIES TO BE USED
3. BRICK WALL IN VERTICORE 100mm CAVITY TO BE COMPLETELY FILLED WITH CONCRETE

4. VERTICORE DIMENSIONS

162mm H
305mm L
90mm W



FRONT VIEW OF WALL HEIGHTS

2716

2360

BACKFILL HEIGHT
160mm

BACK FILL HEIGHT
430mm

MAX BACK FILL
610mm

250mm

520mm

580mm

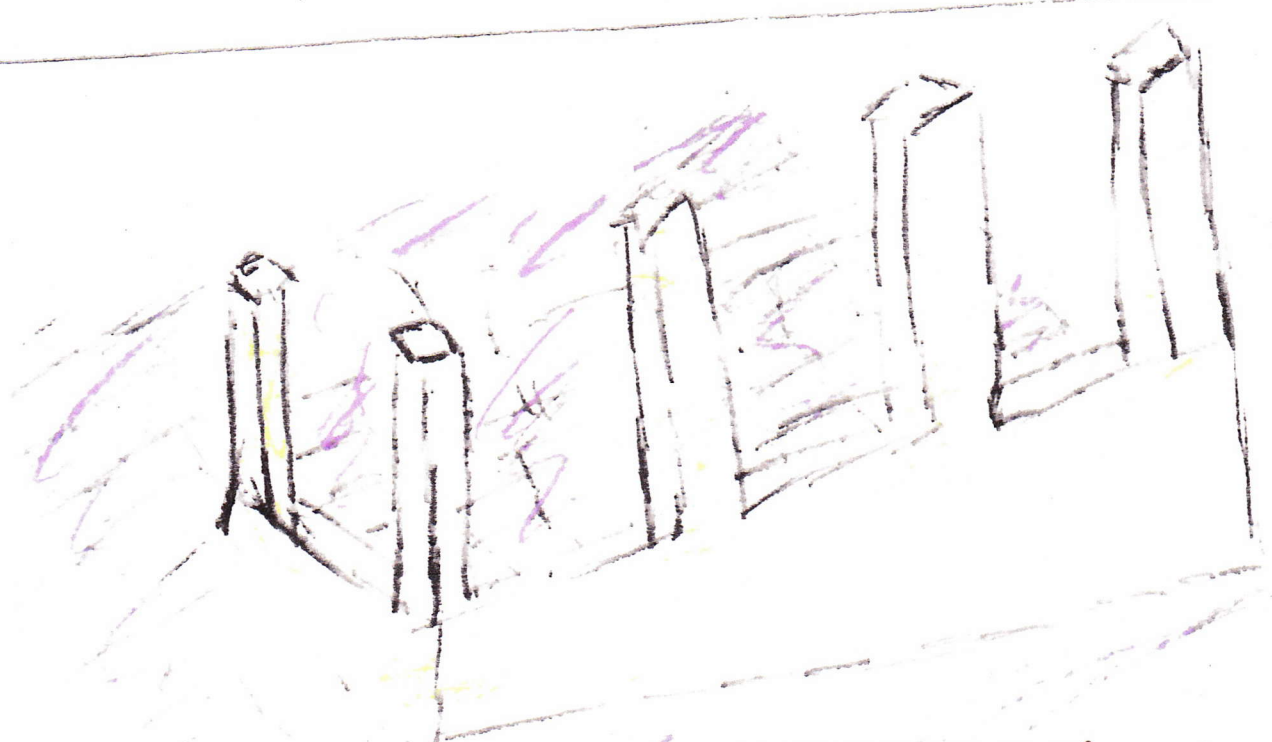
1800mm

700mm

NOTES
Columns to be 1800mm from retained level, back filled to slab height

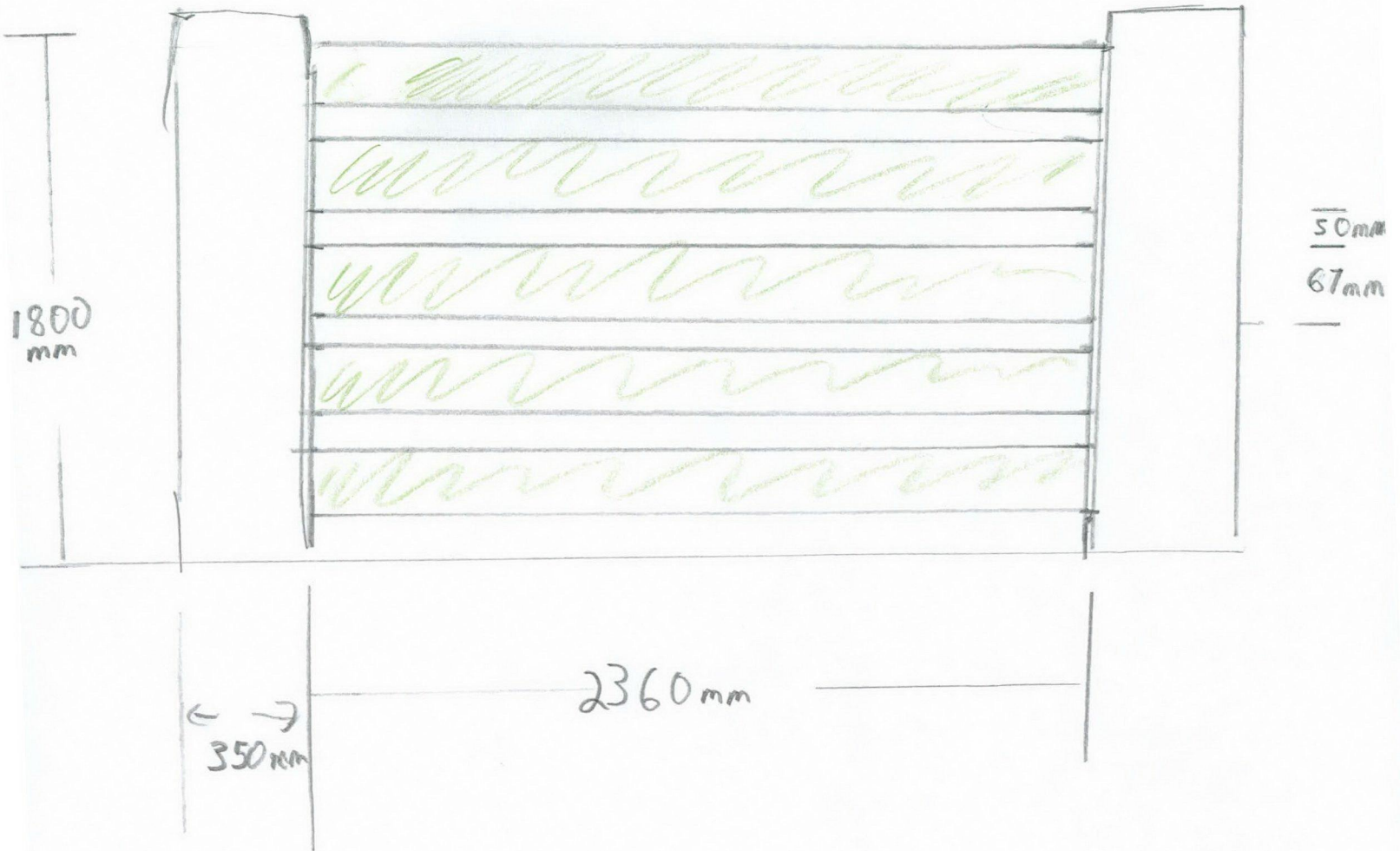
WALL TO BE SET ON NATURAL GROUND LEVEL.
RETAINING FOR BACK FILL TO FFL 11-18 (APPROX)
8500mm

(S) (E) (W)
SERVICES



NATURAL GROUND LEVEL
BLOCK PAVED BLENDED WITH
DRIVEWAY BLOCK PAVE

in Fill
COMPOSITE SCREENING
67 x 15 mm



 COMPOSITE SCREENING

NOTES

1. columns 1800mm tall to ALLOW PRIVACY
2. in Fill to BE FROM COMPOSITE SCREENING
67mm x 15mm WITH 50mm CLEARANCE