

LOCATION SITE PLAN

SCALE: 1:750@A1



KINGSWAY CHRISTIAN COLLEGE - 157 KINGSWAY, DARCH

STAGE 2 - ARTS + MEDIA & RESOURCE CENTRE, STAFF COMMUNITY + CHANGEROOMS

JOB NO.: 1912

DATE: OCT 2020

DWG NO.: DD.01

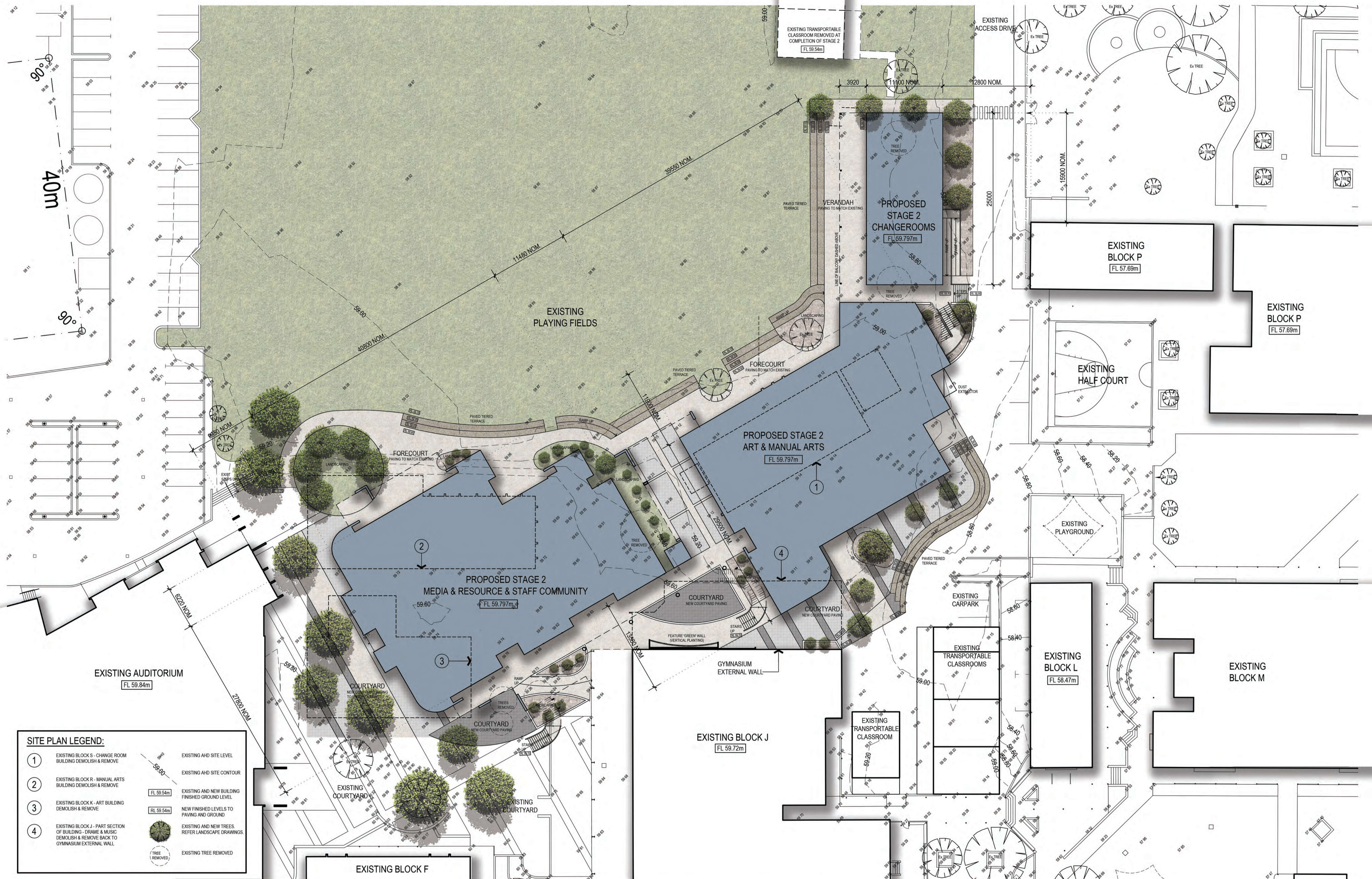
REV: A

340 Hay Street Subiaco
Western Australia 6008
T +61 8 9484 4700
E alw@eiwarch.com.au
W www.eiwarch.com.au
ABN 88 1290 054 872



building ideas

© eiw architects



SITE PLAN LEGEND:

- 1 EXISTING BLOCK S - CHANGE ROOM BUILDING DEMOLISH & REMOVE
- 2 EXISTING BLOCK R - MANUAL ARTS BUILDING DEMOLISH & REMOVE
- 3 EXISTING BLOCK K - ART BUILDING DEMOLISH & REMOVE
- 4 EXISTING BLOCK J - PART SECTION OF BUILDING - DANCE & MUSIC DEMOLISH & REMOVE BACK TO GYMNASIUM EXTERNAL WALL

EXISTING AHD SITE LEVEL
EXISTING AHD SITE CONTOUR
EXISTING AND NEW BUILDING FINISHED GROUND LEVEL
NEW FINISHED LEVELS TO PAVING AND GROUND
EXISTING AND NEW TREES. REFER LANDSCAPE DRAWINGS
EXISTING TREE REMOVED



SITE PLAN

SCALE: 1:250@A1



KINGSWAY CHRISTIAN COLLEGE - 157 KINGSWAY, DARCH

STAGE 2 - ARTS + MEDIA & RESOURCE CENTRE, STAFF COMMUNITY + CHANGEROOMS

JOB NO. :1912

DATE :OCT 2020

DWG NO. :DD.02

REV : A

340 Hay Street Subiaco
Western Australia 6008
T +61 8 9484 4700
E alward@eiwarch.com.au
W www.eiwarh.com.au
ABN 88 1290 054 872



building ideas

© eiw architects



LEVEL 1 PLAN

SCALE: 1:200@A1

0 2 4 20m



KINGSWAY CHRISTIAN COLLEGE - 157 KINGSWAY, DARCH

STAGE 2 - ARTS + MEDIA & RESOURCE CENTRE, STAFF COMMUNITY + CHANGEROOMS

JOB NO. :1912

DATE :OCT 2020

DWG NO. :DD.03

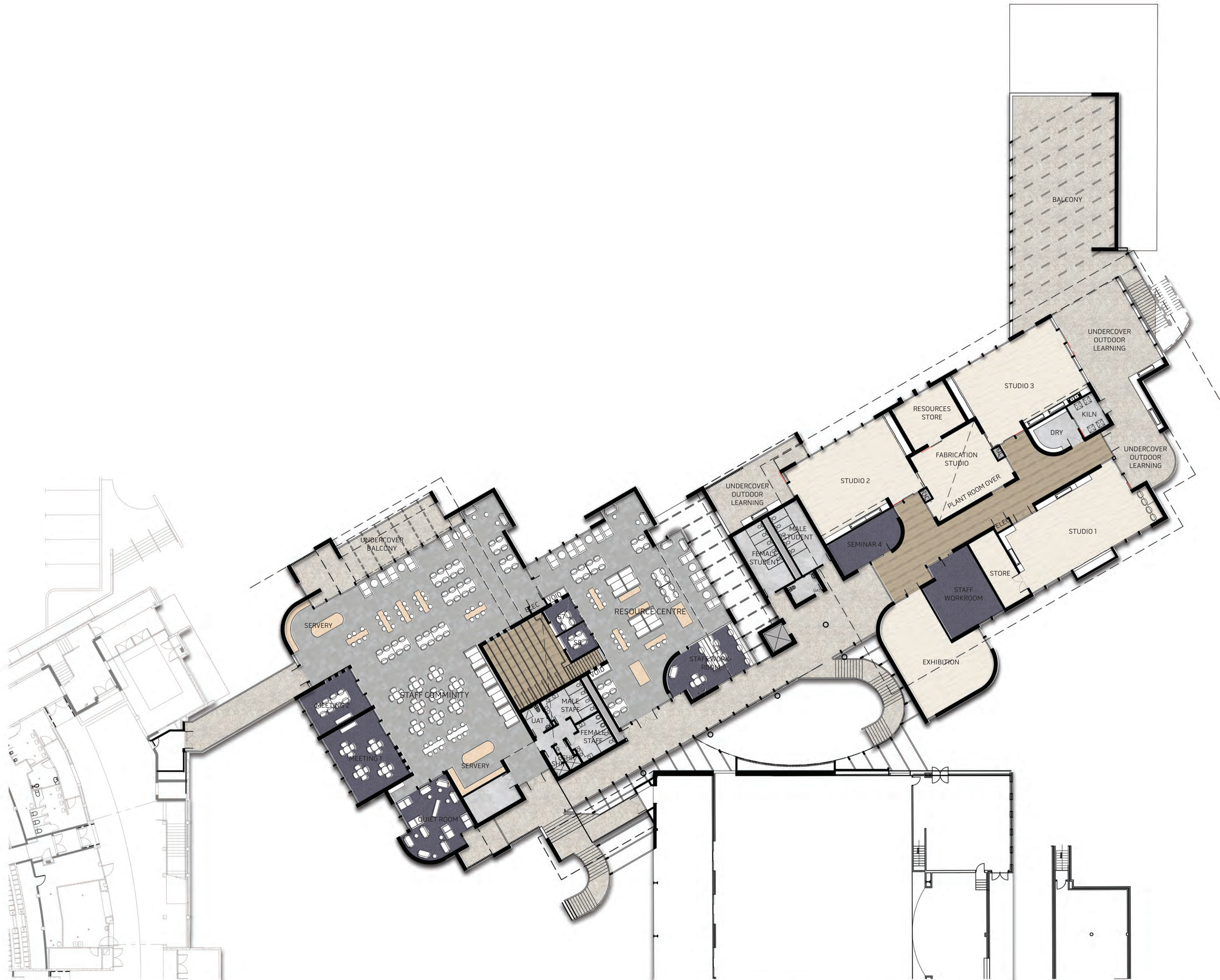
REV : A

340 Hay Street Subiaco
Western Australia 6008
T +61 8 9484 4700
E enquiries@eiwarch.com.au
W www.eiwarch.com.au
ABN 88 1290 054 672



building ideas

© eiw architects



LEVEL 2 PLAN

SCALE : 1:200@A1

0 2 4 20m



KINGSWAY CHRISTIAN COLLEGE - 157 KINGSWAY, DARCH
STAGE 2 - ARTS + MEDIA & RESOURCE CENTRE, STAFF COMMUNITY + CHANGEROOMS

JOB NO. :1912

DATE :OCT 2020

DWG NO. :DD.04

REV : A

340 Hay Street, Subiaco
 Western Australia 6008
 T +61 8 9484 4700
 E eiwarch@eiwarch.com.au
 W www.eiwarch.com.au
 ABN 88 1290 054 672

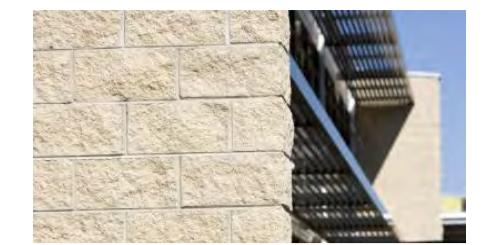


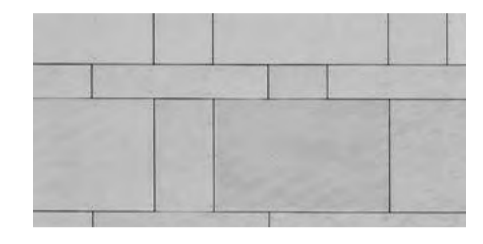







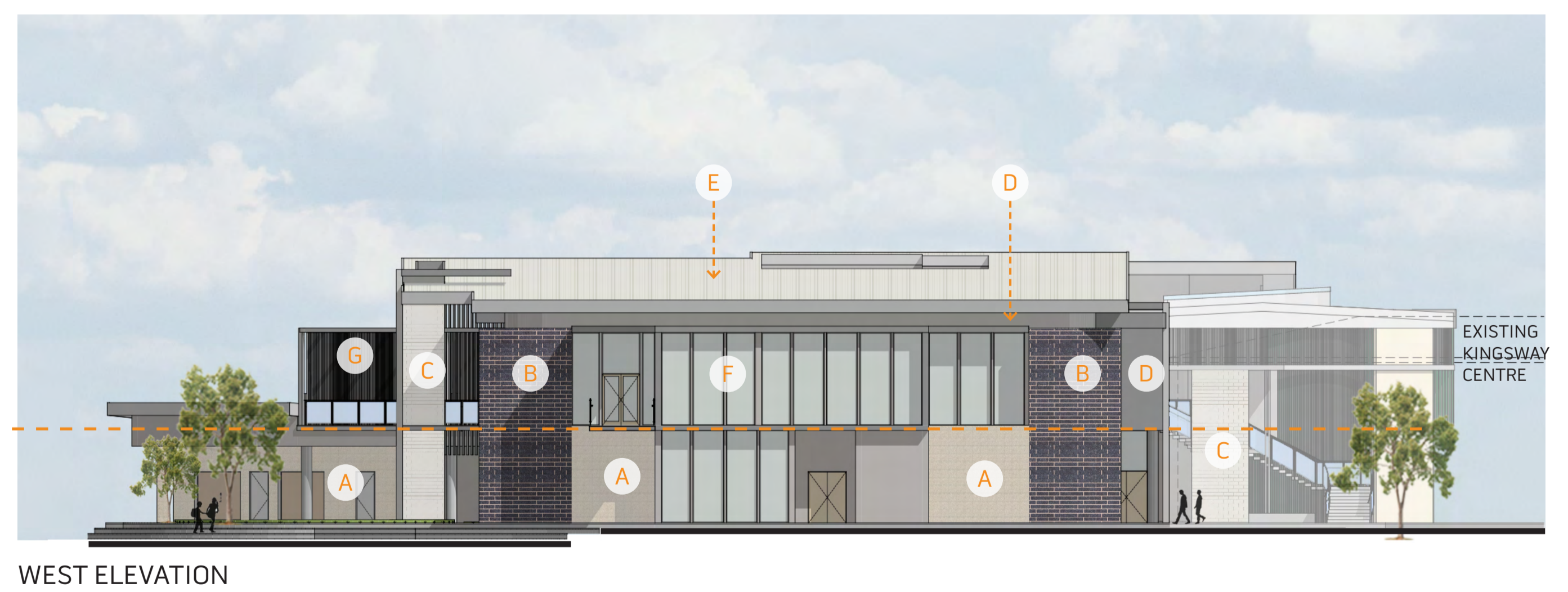
building ideas

© eiw architects



MATERIAL LEGEND:

-  A - Split/Smooth Face block
Designer Block 'Alabaster'
-  B - Facebrick
Emporium 'Chic'
-  C - Facebrick
La Paloma 'Castellana'
-  D - Fibre Cement
Equitone 'TE90, TE20 and TE00'
-  E - Roof Sheetting
KlipLok Classic 700 Colorbond 'Surfmist'
-  F - Window/Doors
AWS Series FrontGLAZE External Window and Door Suites
-  G - Aluminium Screen Elements
-  H - Fibre Cement
-  I - Vertical Green Wall



ELEVATIONS

SCALE. : 1:200@A1



KINGSWAY CHRISTIAN COLLEGE - 157 KINGSWAY, DARCH

STAGE 2 - ARTS + MEDIA & RESOURCE CENTRE, STAFF COMMUNITY + CHANGEROOMS

JOB NO. :1912

DATE :OCT 2020

DWG NO. :DD.05

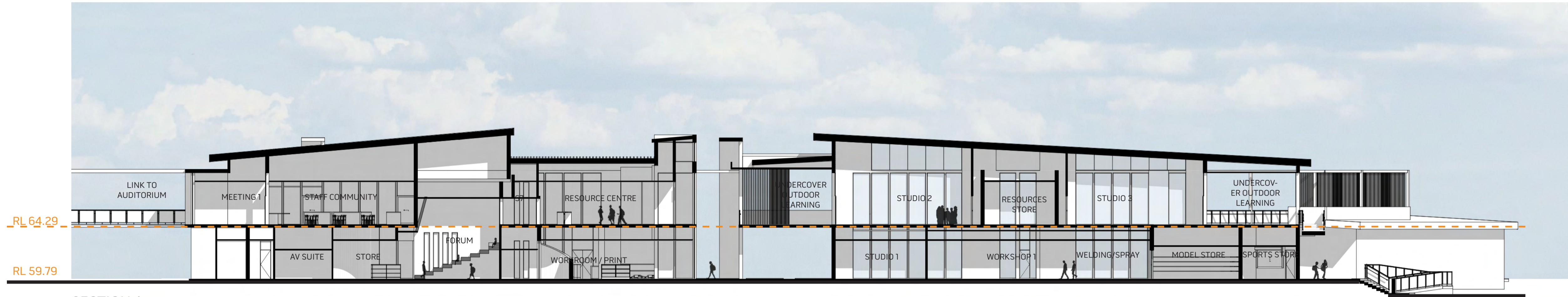
REV : A

340 Hay Street Subiaco
Western Australia 6008
T +61 8 9484 4700
E edward@eiwarch.com.au
W www.eiwarch.com.au
ABN 88 1290 054 672

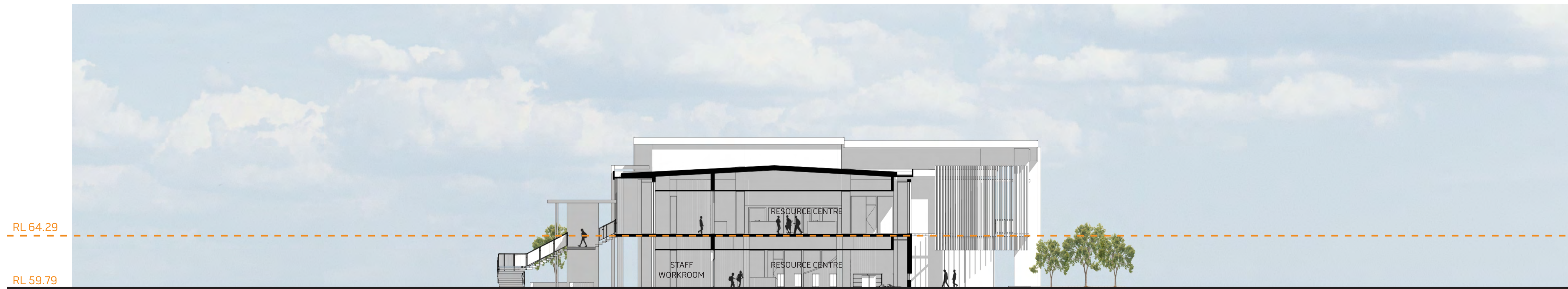


building ideas

© eiw architects



SECTION A



SECTION B

SECTIONS

SCALE. : 1:200@A1



KINGSWAY CHRISTIAN COLLEGE - 157 KINGSWAY, DARCH
STAGE 2 - ARTS + MEDIA & RESOURCE CENTRE, STAFF COMMUNITY + CHANGEROOMS
 JOB NO. :1912 DATE :OCT 2020 DWG NO. :DD.06 REV : A

340 Hay Street Subiaco
 Western Australia 6008
 T +61 8 9484 4700
 E eiwar@eiwar.com.au
 W www.eiwar.com.au
 ABN 88 1250 054 672



building ideas

© eiw architects



VIEW FROM NORTH



BIRDS EYE VIEW FROM NORTH



VIEW INTO STAFF COMMUNITY + BALCONY



OUTDOOR GATHERING SPACE AND STAFF COMMUNITY

PERSPECTIVES



KINGSWAY CHRISTIAN COLLEGE - 157 KINGSWAY, DARCH
STAGE 2 - ARTS + MEDIA & RESOURCE CENTRE, STAFF COMMUNITY + CHANGEROOMS
 JOB NO. :1912 DATE :OCT 2020 DWG NO. :DD.07 REV : A

340 Hay Street Subaco
 Western Australia 6008
 T +61 8 9484 4700
 E eiwarch@eiwarch.com.au
 W www.eiwarch.com.au
 ABN 88 1250 054 672



building ideas

© eiw architects



OUTDOOR LEARNING BALCONY



CENTRAL LEARNING ATRIUM

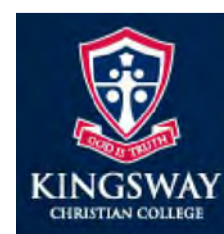


UNDERCOVER OUTDOOR LEARNING SPACES



CENTRAL LEARNING ATRIUM

PERSPECTIVES



KINGSWAY CHRISTIAN COLLEGE - 157 KINGSWAY, DARCH

STAGE 2 - ARTS + MEDIA & RESOURCE CENTRE, STAFF COMMUNITY + CHANGEROOMS

JOB NO. :1912

DATE :OCT 2020

DWG NO. :DD.08

REV : A

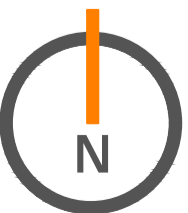
340 Hay Street Subaco
Western Australia 6008
T +61 8 9484 4700
E eiwar@eiwar.com.au
W www.eiwar.com.au
ABN 88 1250 054 672



building ideas

© eiw architects

- ARTS
- DESIGN
- MEDIA
- RESOURCE CENTRE
- STAFF COMMUNITY
- AMENITIES



ZONE PLAN



KINGSWAY CHRISTIAN COLLEGE - 157 KINGSWAY, DARCH
STAGE 2 - ARTS + MEDIA & RESOURCE CENTRE, STAFF COMMUNITY + CHANGEROOMS
JOB NO. :1912 DATE :OCT 2020 DWG NO. :DD.09 REV : A

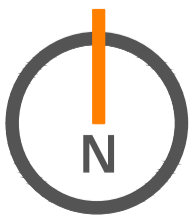
340 Hay Street Subaco
Western Australia 6008
T +61 8 9484 4700
E eiwar@eiwar.com.au
W www.eiwar.com.au
ABN 88 1250 054 672



building ideas

© eiw architects

- ARTS
- DESIGN
- MEDIA
- RESOURCE CENTRE
- STAFF COMMUNITY
- AMENITIES



ZONE PLAN



KINGSWAY CHRISTIAN COLLEGE - 157 KINGSWAY, DARCH
STAGE 2 - ARTS + MEDIA & RESOURCE CENTRE, STAFF COMMUNITY + CHANGEROOMS
JOB NO. :1912 DATE :OCT 2020 DWG NO. :DD.10 REV : A

340 Hay Street Subaco
Western Australia 5008
T +61 8 9484 4700
E eiwarch@eiwarch.com.au
W www.eiwarch.com.au
ABN 88 1250 054 672



building ideas

© eiw architects



LEGEND

- 01 SEATING TERRACES TO SPORTS FIELDS
- 02 LARGE ICONIC TREE SPECIES IE. NORFOLK ISLAND PINE
- 03 OUTDOOR CLASSROOM SPACE WITH MOUNDED TURF AND DECIDUOUS TREES IE. ULMUS PARVIFOLIA
- 04 FEATURE FLOWERING TREE IE. JACARANDA MIMOSIFOLIA
- 05 SPILL OUT AREA FROM EXISTING AUDITORIUM WITH FEATURE BENCH SEATING IN GARDEN BEDS AND SHADE TREES IE. PYRUS NIVALIS
- 06 EXISTING TREES TO PROTECT AND RETAIN
- 07 COURTYARD SPACE WITH FEATURE PAVING AND RAISED DECK PLANTER
- 08 SHADE TOLERANT PLANTING IN UNDERCOVER AREA IE. PALMS AND FERN SPECIES
- 09 NARROW TREE SPECIES IN GARDEN BED TO BUILDING IE. PYRUS 'CAPITAL'
- 10 ROW OF SHADE TOLERANT EVERGREEN TREE SPECIES AND SHRUB PLANTING TO ADD PRIVACY TO BACK OF HOUSE AREA IE. CUPANIOPSIS ANACARDIOIDES
- 11 RAISED DECK PLANTERS IN UNDERCOVER COURTYARD SPACE WITH SHADE TOLERANT PLANTING IE. PALM AND FERN SPECIES
- 12 FEATURE GREEN WALLS FORMING INTEGRATED ARTWORK GRAPHIC PANELS
- 13 TALL NARROW DECIDUOUS TREES IN PAVING IE. PYRUS 'CAPITAL'
- 14 FLOWERING DECIDUOUS TREES IN GARDEN BED IE. PRUNUS Cerasifera 'NIGRA'

KINGSWAY CHRISTIAN COLLEGE

CONCEPT SKETCH PLAN
NOVEMBER 2020

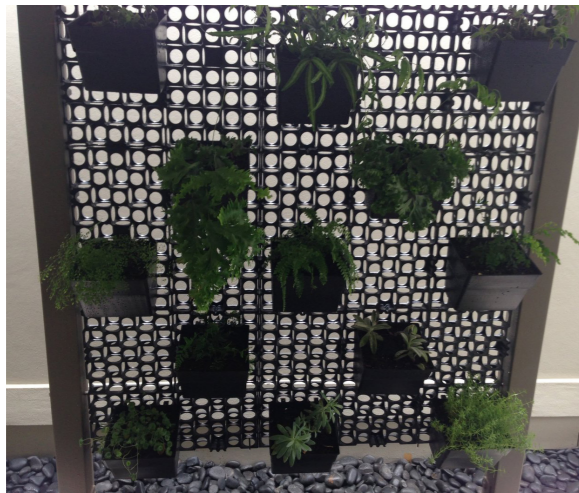
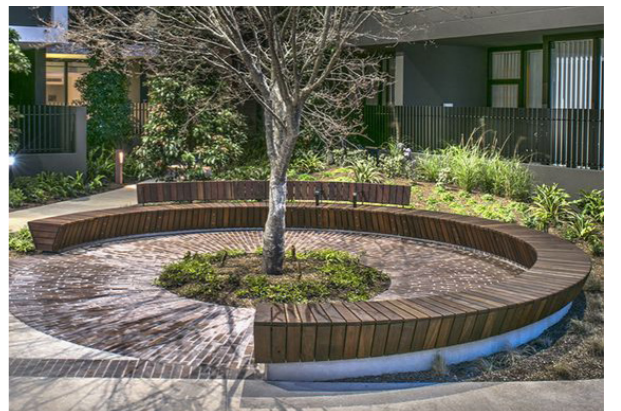
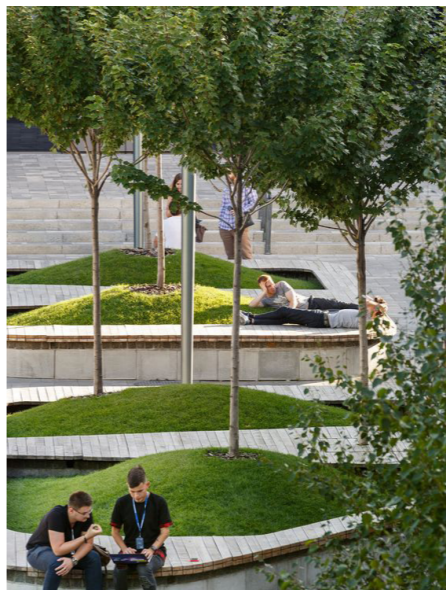
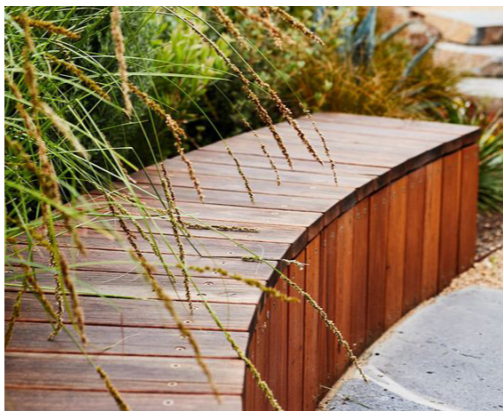
JOB NO. 2012201
1:250 @ A1

C1.101
0 2.5 5 10 15 25m
REV C

COPYRIGHT THIS DOCUMENT IS AND
SHALL REMAIN THE PROPERTY OF
PLAN E



LANDSCAPE ARCHITECTS
414 ROKEBY RD SUBIACO WA 6008
T: (08) 9388 9566 E: mail@plane.com.au



KINGSWAY CHRISTIAN COLLEGE

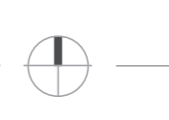
CONCEPT IMAGERY
NOVEMBER 2020

JOB NO. 2012201

C3.101

REV A

COPYRIGHT THIS DOCUMENT IS AND
SHALL REMAIN THE PROPERTY OF
PLAN E



LANDSCAPE ARCHITECTS

414 ROKEBY RD SUBIACO WA 6008
T: (08) 9388 9566 E: mail@plane.com.au