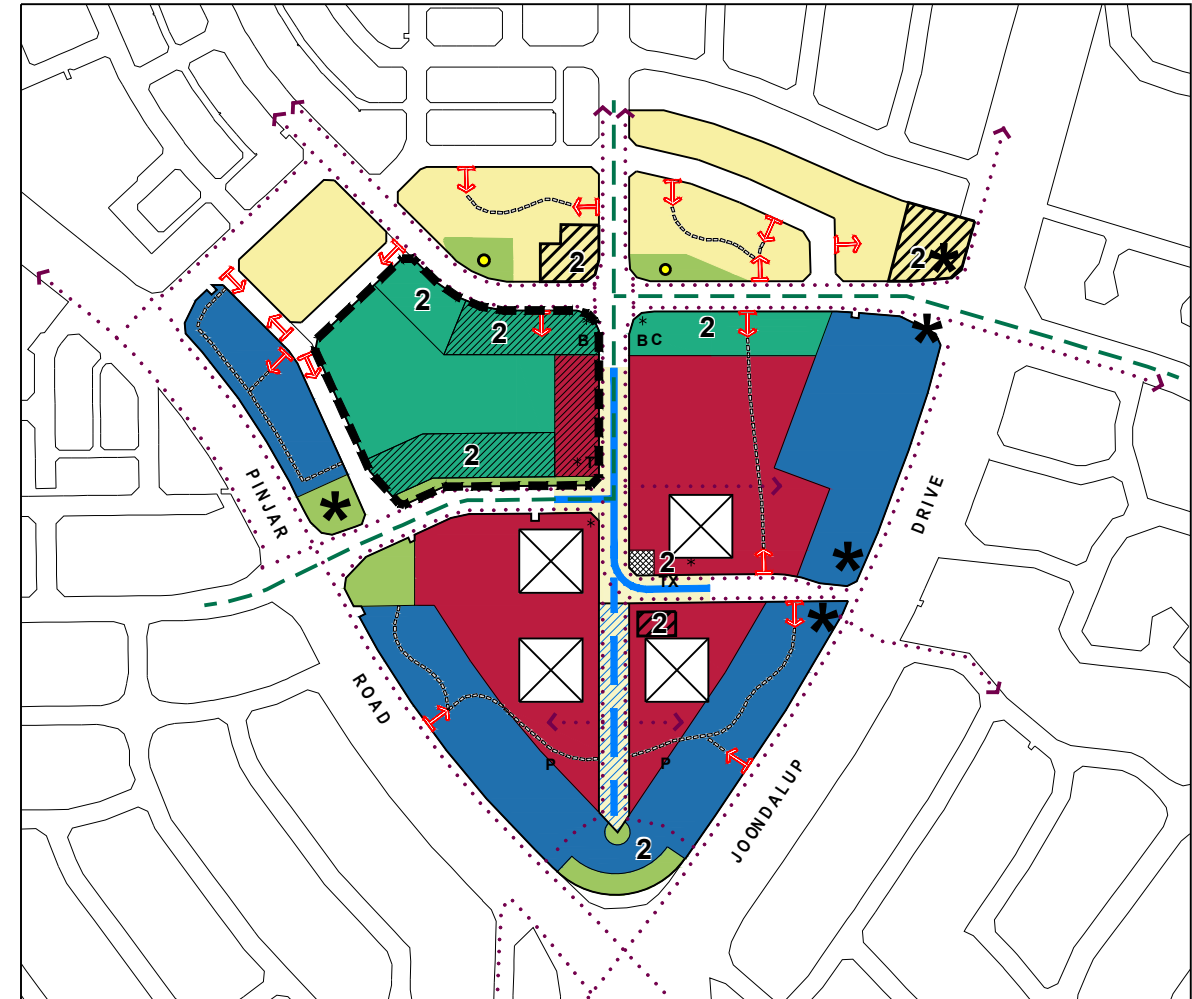




CURRENT ACP No. 65



PROPOSED AMENDMENT No. 5

LEGEND

- Proposed Amendment No. 5
- Retail Core
- Residential Precinct
- Business Precinct
- Mixed Use Precinct
- Mixed Use Building Typology

- Park/Stormwater Management
- (Main Street)
- Town Square
- Extension of Main Street (as either a vehicular or pedestrian street)
- Large Format Retail Element (sleeved from main street view)
- Principal Entry Point To Off-street Parking

- Primary Landmark Element
- Secondary Landmark Element
- Principal Pedestrian Routes
- Internal Vehicle Connectivity
- Principal Parking Areas/ Future Potential Decked Parking
- Community Purpose Location
- Preferred Tavern Location

- Bus Stop Locations
- Taxi Rank
- Indicative Bus Routes
- Min. 2 Storey Elements
- Mandatory Upper Floor Residential Component
- POS Unrestricted from Drainage

