

## EMAIL TRANSMITTAL

**REF:** 27529-2-21027-03  
**COMPANY:** Meteor Stone  
**ATTENTION:** [REDACTED]  
**EMAIL:** [REDACTED]  
**CC:** [REDACTED]  
**FROM:** [REDACTED]  
**DATE:** 30 April 2021  
**SUBJECT:** LOT 6 WESCO ROAD, NOWERGUP  
 ACOUSTIC ADVICE

---

[REDACTED]

As requested, we provide the following information relating to the Meteor Stone Operations located at Lot 6 Wesco Road, Nowergup.

Noise measurements were conducted during a site visit on 18<sup>th</sup> and 19<sup>th</sup> January 2021. The block laying and block cutting activities were in full operation during the site visit.

Noise levels measured for individual equipment were conducted with the resultant level used to produce a noise contour map for the current operations. This noise contour map represents all operations being conducted at the same time, with maximum noise propagation (weather) conditions, hence would be considered the worst case noise levels.

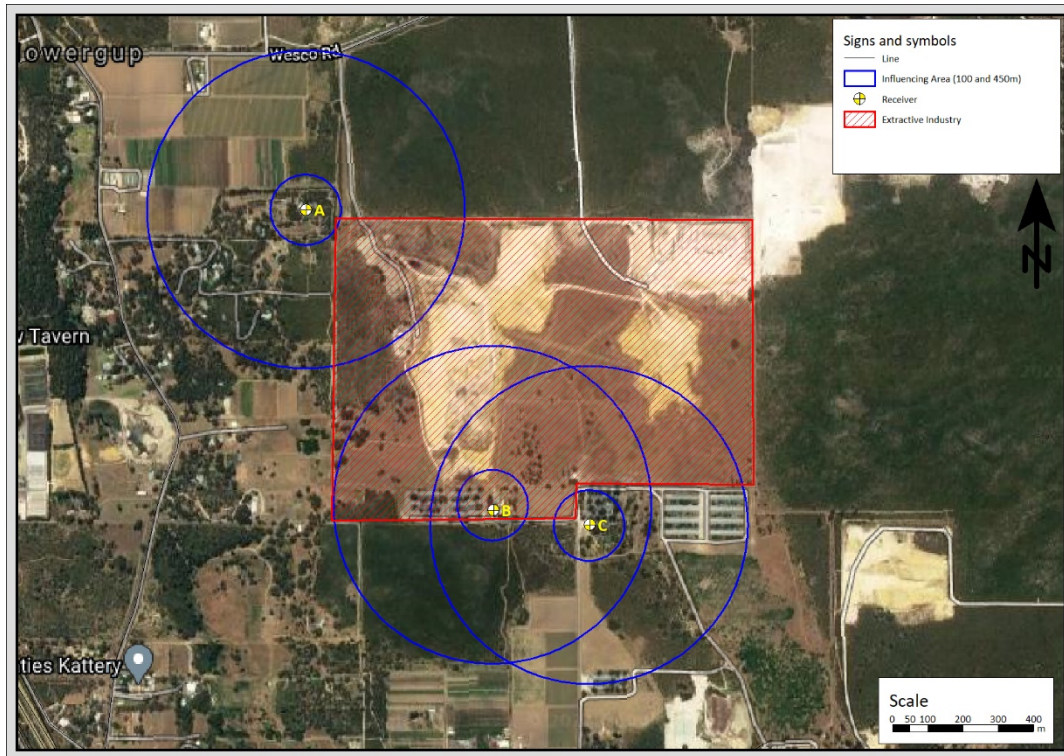
The nearest residences have been identified as the Lots to the west on Gibbs Road, and the two residence to the south, which appear to be part of the poultry farms, based on the shed configuration.

There is likely to be an influencing factor for some of these residences due to the location of extractive industries as shown in Figure 1 below, hence this has been calculated as follows:

**TABLE 1 – INFLUENCING FACTOR CALCULATIONS**

Receiver	Industry Inner Circle 100m	Industry Outer Circle 450m	Total dB
A	0%	20%	+2
B	60%	50%	+11
C	10%	40%	+5

**FIGURE 1 -INFLUENCING FACTOR MAP**

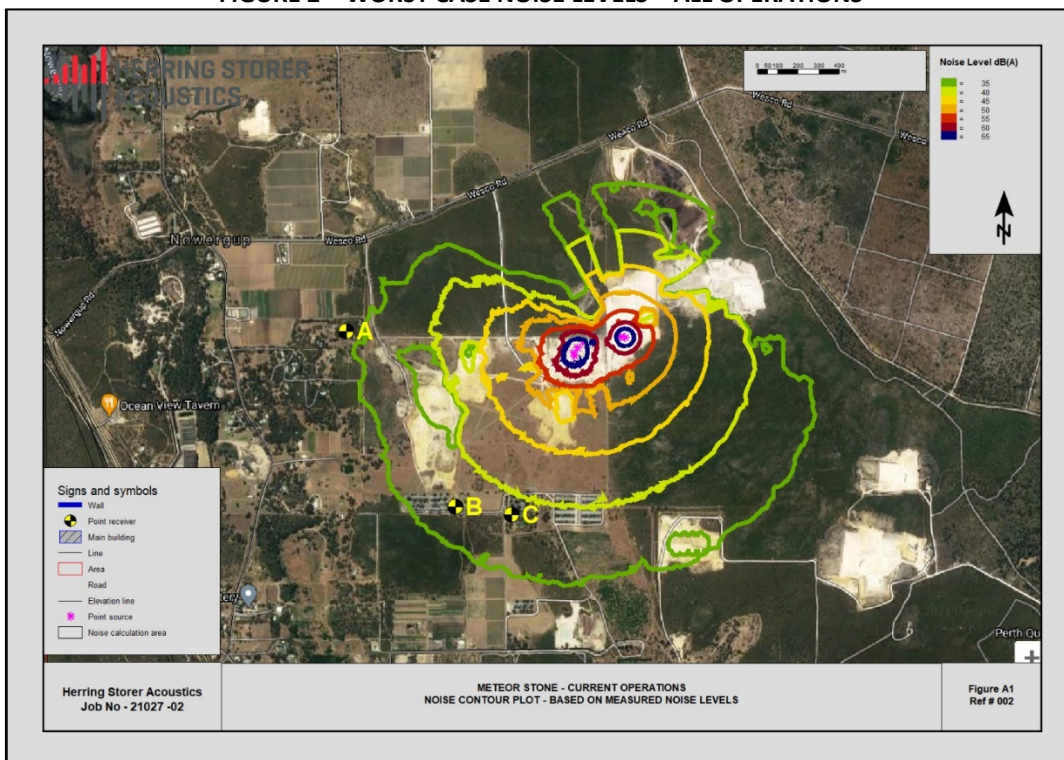


The individual noise levels and noise contour plot is shown below for reference.

**TABLE 2 – ASSESSMENT OF NOISE LEVELS CURRENT OPERATION**

Receiver	All Equipment Operating dB(A)
A	34
B	37
C	38

**FIGURE 2 – WORST CASE NOISE LEVELS – ALL OPERATIONS**



Assessment of the worst-case noise levels has been compared to the assigned noise levels, with the results detailed in Table 3.

**TABLE 3 - ASSESSABLE OUTDOOR NOISE LEVEL**

Premises Receiving Noise	Assessable Noise Level	Time of Day	Assigned Level (dB)	Compliance
			L <sub>A10</sub>	
A	34	0700 - 1900 hours Monday to Saturday (Day)	47	Complies
		0900 - 1900 hours Sunday and Public Holidays (Sunday / Public Holiday Day Period)	42	Complies
		1900 - 2200 hours all days (Evening)	42	Complies
		2200 hours on any day to 0700 hours Monday to Saturday and 0900 hours Sunday and Public Holidays (Night)	37	Complies
B	37	0700 - 1900 hours Monday to Saturday (Day)	56	Complies
		0900 - 1900 hours Sunday and Public Holidays (Sunday / Public Holiday Day Period)	51	Complies
		1900 - 2200 hours all days (Evening)	51	Complies
		2200 hours on any day to 0700 hours Monday to Saturday and 0900 hours Sunday and Public Holidays (Night)	46	Complies
C	38	0700 - 1900 hours Monday to Saturday (Day)	50	Complies
		0900 - 1900 hours Sunday and Public Holidays (Sunday / Public Holiday Day Period)	45	Complies
		1900 - 2200 hours all days (Evening)	45	Complies
		2200 hours on any day to 0700 hours Monday to Saturday and 0900 hours Sunday and Public Holidays (Night)	40	Complies

Note: L<sub>A10</sub> is the noise level exceeded for 10% of the time.  
 L<sub>A1</sub> is the noise level exceeded for 1% of the time.  
 L<sub>Amax</sub> is the maximum noise level.

The modelling of all operating plant shows compliance at the sensitive premises for all regulatory criteria periods.

Note, given the noise level and the distance to the residence from the noise sources, it is unlikely the received noise level would contain annoying characteristics, such as tonality.

We trust this clarifies the queries, however, should you have any further questions, please do not hesitate to contact this office.

Yours faithfully,  
 for **HERRING STORER ACOUSTICS**

