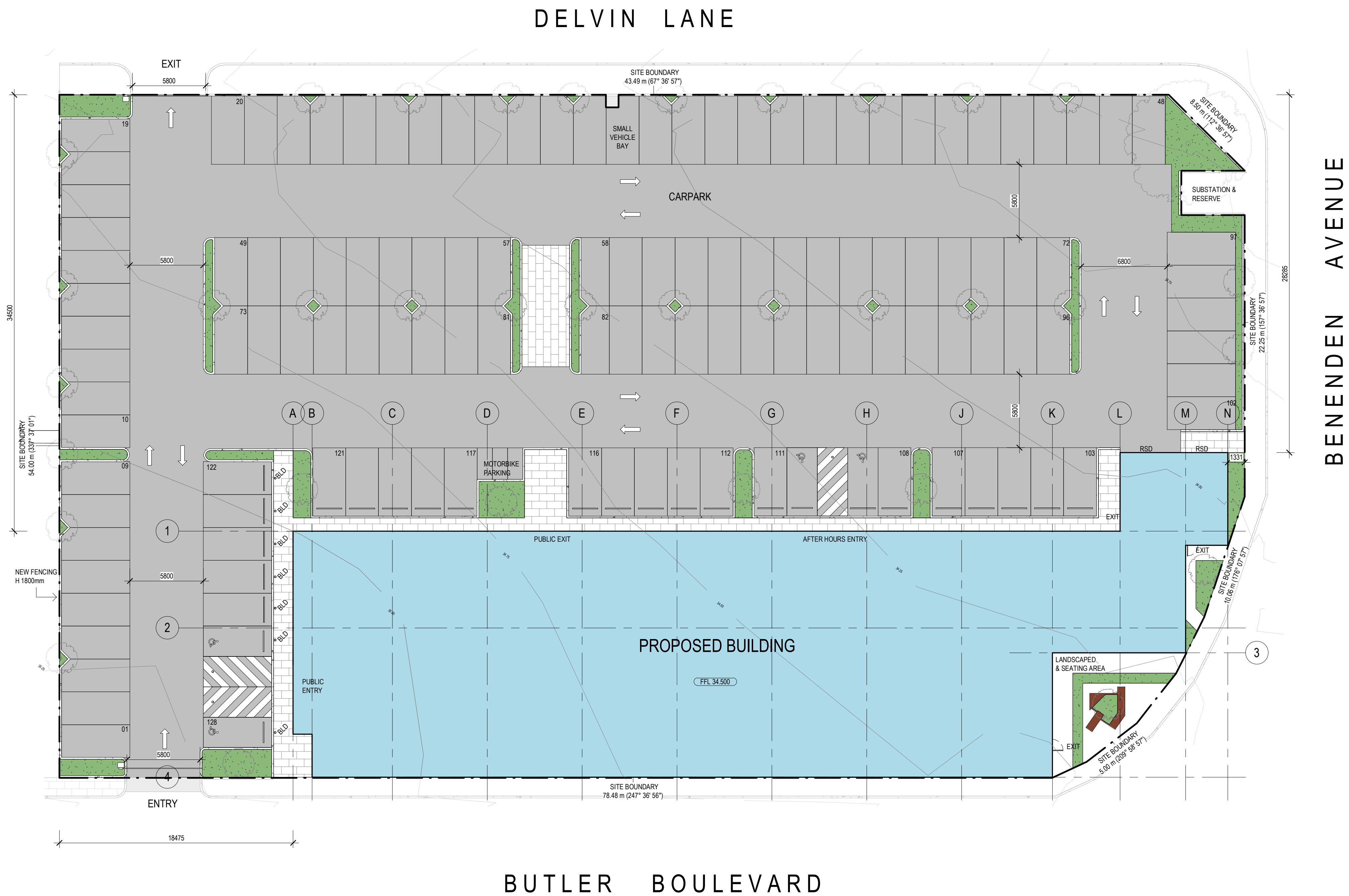


PROJECT SUMMARY

SITE AREA	APROX 4912 m ²
GROSS FLOOR AREA	1320 m ²
NET LETTABLE AREA	1100 m ²
PARKING BAYS INCLUDING ACCESSIBLE	128 4



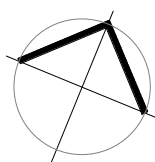
NO.	DATE	REVISION	BY	CHK
P1	11.06.2021	PRELIMINARY ISSUE	LT	AS
P2	17.06.2021	PRELIMINARY ISSUE	LT	AS

All areas indicated are indicative for design and planning purposes only and should not be used for any contractual reasons without verification by a licensed surveyor or further design development being completed.

Watson Young Architects P/L Melbourne | Perth | Sydney 03 9516 8555 A/CN: 111398700
8 Gratton Street Prahran VIC 3181 info@watsonyoung.com.au www.watsonyoung.com.au
© Watson Young Architects. This drawing is protected by copyright.

PROJECT:
NEW OFFICE, 225 BUTLER BOULEVARD,
BUTLER WA, 6036

TITLE:
SITE PLAN



CLIENT:
Castlerock

DATE: JUNE, 2021
DRAWN BY: GN
SCALE: 1 : 200@A1
SCALE: 1 : 400@A3

JOB NO:	19216
DRAWING NO:	TP01
REVISION:	P2

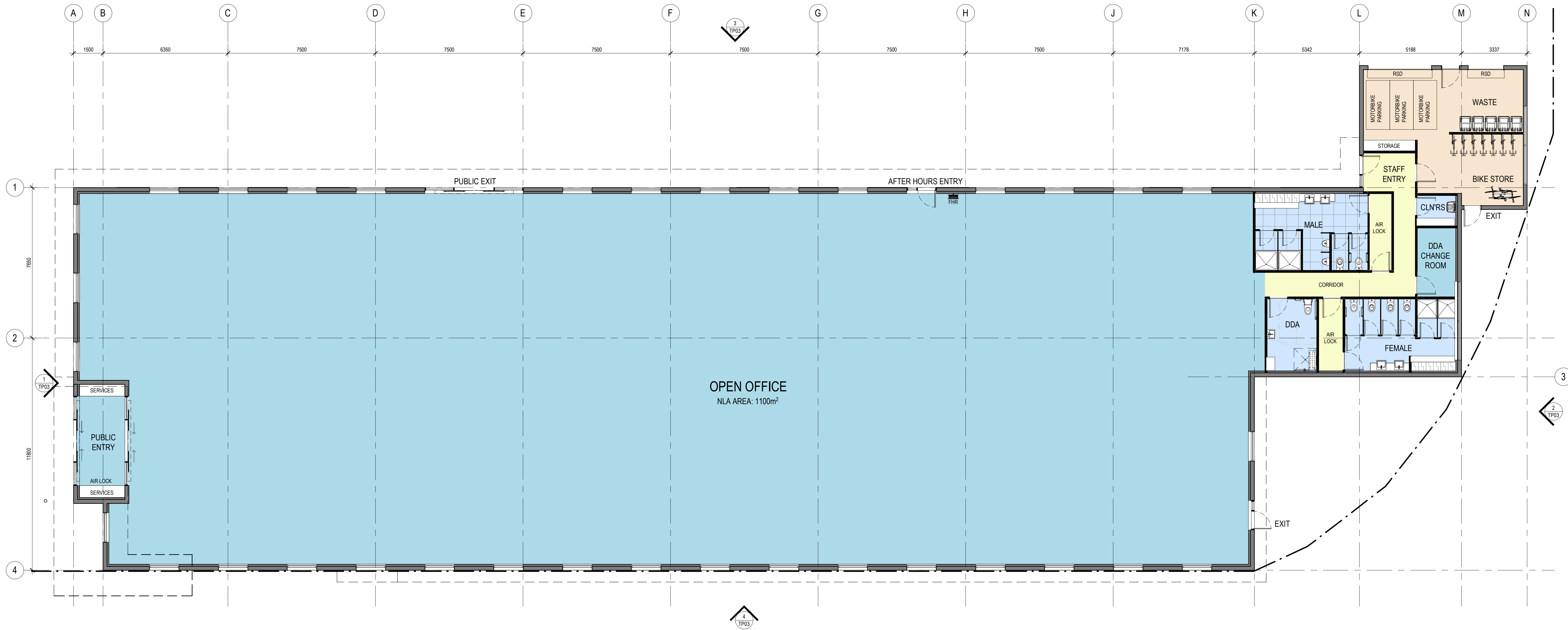
**watson
young**

TENANCY 1100 m² NLA

CORRIDOR 27 m² NLA

AMENITIES 56 m² NLA

SERVICES 48 m² NLA



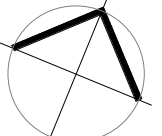
NO.	DATE:	REVISION:	BY:	CHK:
P1	11.06.2021	PRELIMINARY ISSUE	LT	AS
P2	17.06.2021	PRELIMINARY ISSUE	LT	AS

All areas indicated are indicative for design and planning purposes only and should not be used for any contractual reasons without verification by a licensed surveyor or further design development being completed.

Watson Young Architects P/L Melbourne | Perth | Sydney 03 9516 8555 ACN: 111398700
8 Gratton Street Prahran VIC 3181 info@watsonyoung.com.au www.watsonyoung.com.au
© Watson Young Architects. This drawing is protected by copyright.

PROJECT:
NEW OFFICE, 225 BUTLER BOULEVARD,
BUTLER WA, 6036

TITLE:
GROUND FLOOR PLAN

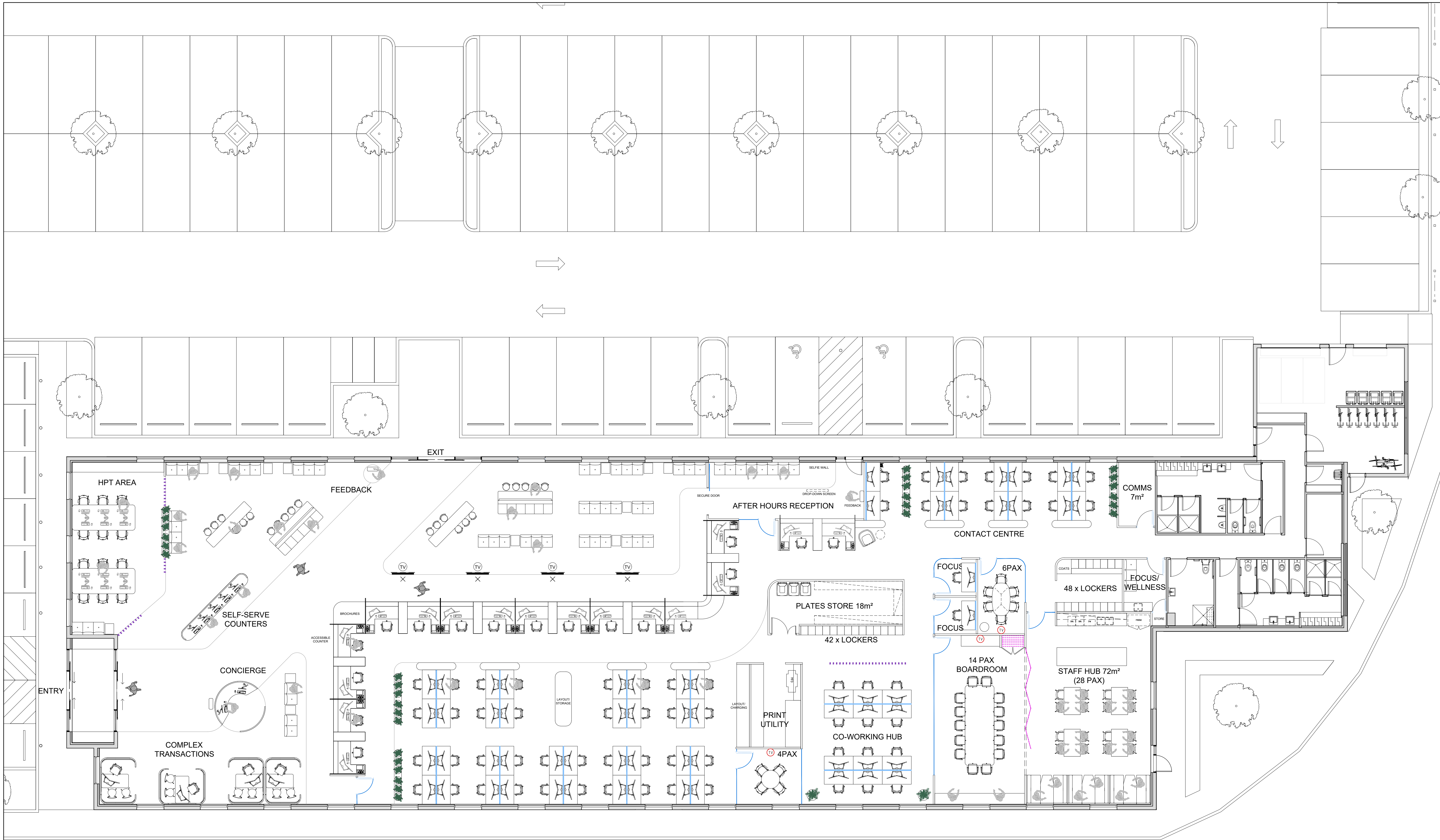


CLIENT:
Castlerock

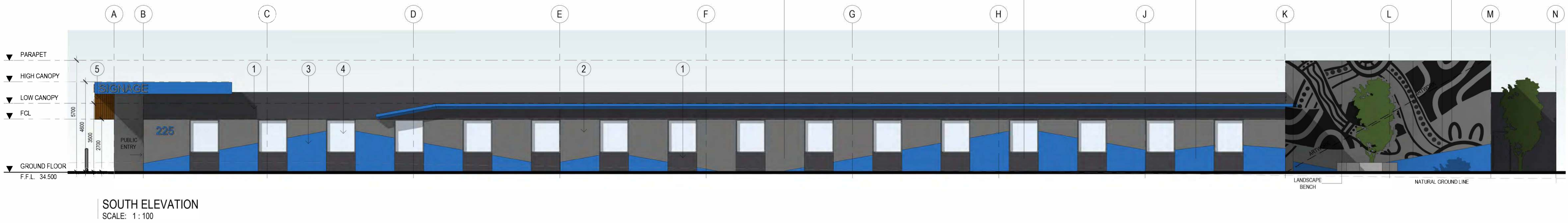
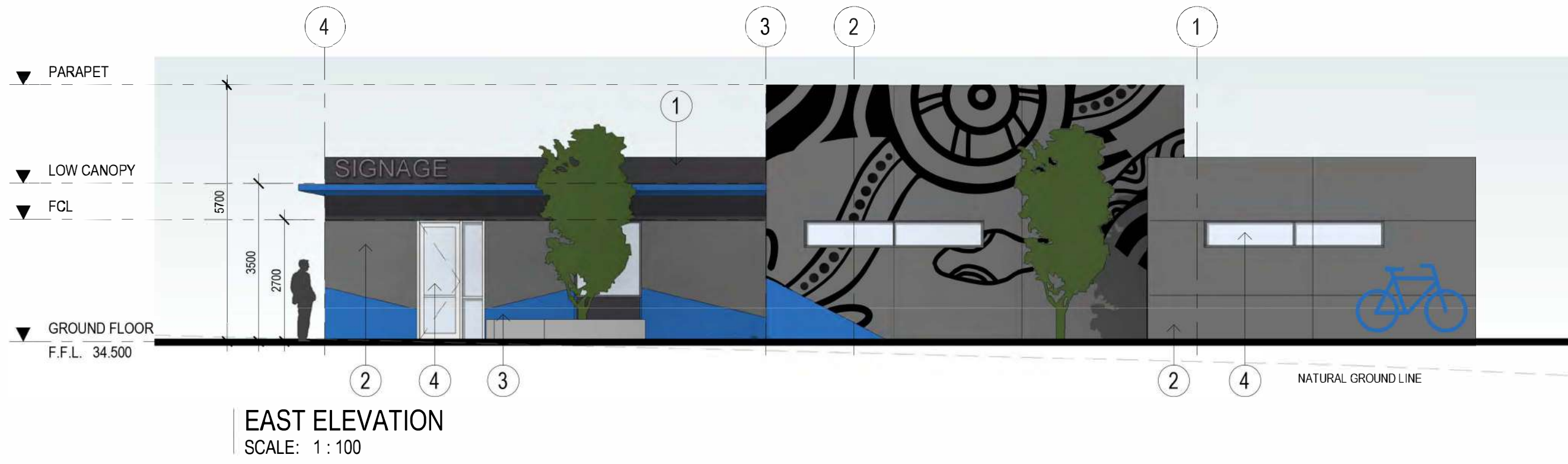
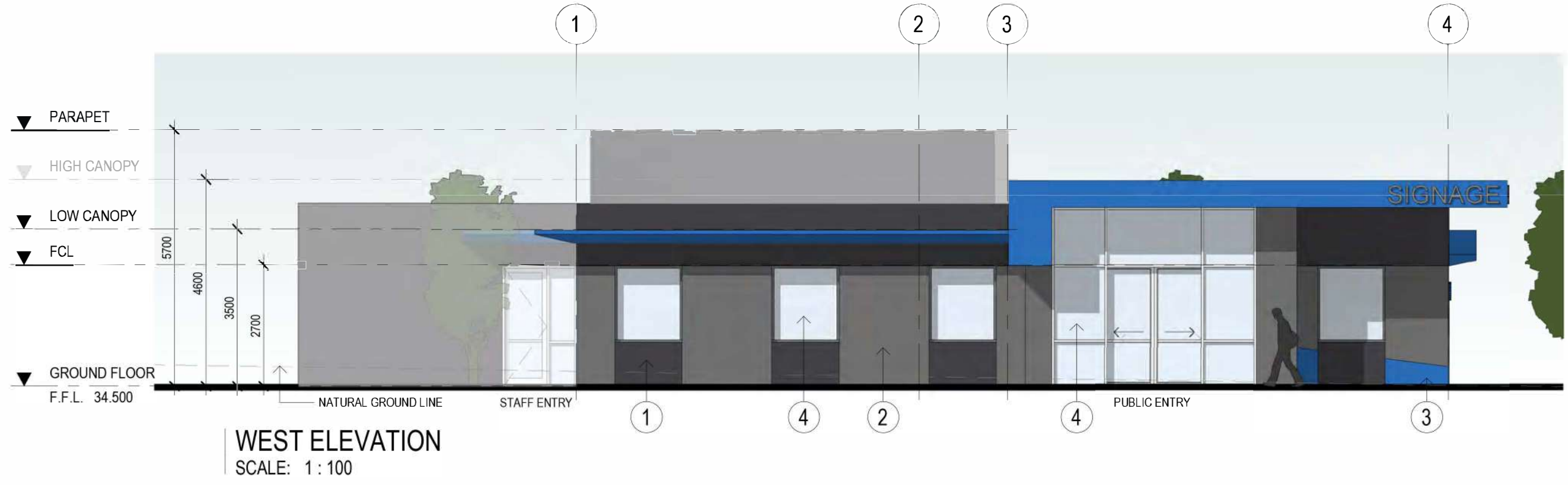
DATE: JUNE, 2021
DRAWN BY: GN
SCALE: 1 : 100@A1
SCALE: 1 : 200@A3

JOB NO:	19216
DRAWING NO:	TP02
REVISION:	P2





INDICATIVE ONLY



EXTERNAL FINISHES

- 1 PAINT FINISH CHARCOAL COLOUR
- 2 PAINT FINISH GREY COLOUR
- 3 PAINT FINISH BLUE COLOUR
- 4 GLAZING
- 5 VERTICAL CLADDING TIMBER LOOK



PAINT FINISH GREY



PAINT FINISH CHARCOAL



PAINT FINISH BLUE



ARTWORK PLACEHOLDER ONLY CREDIT SEANTELE WALSH

PROJECT:
NEW OFFICE, 225 BUTLER BOULEVARD,
BUTLER WA, 6036

TITLE:
ELEVATIONS

CLIENT:
Castlerock

DATE: JUNE, 2021
DRAWN BY: GN
SCALE: 1:100@A1
SCALE: 1:200@A3

JOB NO:
19216
DRAWING NO:
TP03
REVISION:
P2

watson young

NO.	DATE:	REVISION:	BY:	CHK:
P1	11.06.2021	PRELIMINARY ISSUE	LT	AS
P2	17.06.2021	PRELIMINARY ISSUE	LT	AS

All areas indicated are indicative for design and planning purposes only and should not be used for any contractual reasons without verification by a licensed surveyor or further design development being completed.
Watson Young Architects P/L Melbourne | Perth | Sydney 03 9516 8555 ACN: 111398700
8 Gratian Street Prahran VIC 3181 info@watsonyoung.com.au www.watsonyoung.com.au
© Watson Young Architects. This drawing is protected by copyright.



ARTIST'S IMPRESSION

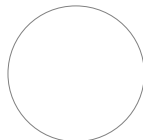
NO.	DATE:	REVISION:	BY:	CHK:
P1	11.06.2021	PRELIMINARY ISSUE	LT	AS
P2	17.06.2021	PRELIMINARY ISSUE	LT	AS

All areas indicated are indicative for design and planning purposes only and should not be used for any contractual reasons without verification by a licensed surveyor or further design development being completed.

Watson Young Architects P/L Melbourne | Perth | Sydney 03 9516 8555 ACN: 111398700
8 Gratlam Street Prahran VIC 3181 info@watsonyoung.com.au www.watsonyoung.com.au
© Watson Young Architects. This drawing is protected by copyright.

PROJECT:
NEW OFFICE, 225 BUTLER BOULEVARD,
BUTLER WA, 6036

TITLE:
3D VIEW



CLIENT:
Castlerock

DATE: JUNE, 2021
DRAWN BY: GN
SCALE: @A1
SCALE:

JOB NO:	19216
DRAWING NO:	TP04
REVISION:	P2

**watson
young**



ARTWORK PLACEHOLDER ONLY
CREDIT - SEANTELE WALSH

ARTIST'S IMPRESSION

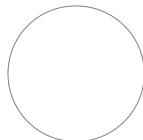
NO.	DATE:	REVISION:	BY:	CHK:
P1	11.06.2021	PRELIMINARY ISSUE	LT	AS
P2	17.06.2021	PRELIMINARY ISSUE	LT	AS

All areas indicated are indicative for design and planning purposes only and should not be used for any contractual reasons without verification by a licensed surveyor or further design development being completed.

Watson Young Architects P/L Melbourne | Perth | Sydney 03 9516 8555 ACN: 111388700
8 Gratton Street Prahran VIC 3181 info@watsonyoung.com.au www.watsonyoung.com.au
© Watson Young Architects. This drawing is protected by copyright.

PROJECT:
NEW OFFICE, 225 BUTLER BOULEVARD,
BUTLER WA, 6036

TITLE:
3D VIEW



CLIENT:
Castlerock

DATE: JUNE, 2021
DRAWN BY: GN
SCALE: @A1
SCALE:

JOB NO:	19216
DRAWING NO:	TP05
REVISION:	P2

**watson
young**



ARTIST'S IMPRESSION

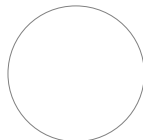
NO.	DATE	REVISION	BY	CHK
P1	11.06.2021	PRELIMINARY ISSUE	LT	AS
P2	17.06.2021	PRELIMINARY ISSUE	LT	AS

All areas indicated are indicative for design and planning purposes only and should not be used for any contractual reasons without verification by a licensed surveyor or further design development being completed.

Watson Young Architects P/L Melbourne | Perth | Sydney 03 9516 8555 ACN: 111398700
8 Gratlam Street Prahran VIC 3181 info@watsonyoung.com.au www.watsonyoung.com.au
© Watson Young Architects. This drawing is protected by copyright.

PROJECT:
NEW OFFICE, 225 BUTLER BOULEVARD,
BUTLER WA, 6036

TITLE:
3D VIEW



CLIENT:
Castlerock

DATE: JUNE, 2021
DRAWN BY: GN
SCALE: @A1
SCALE:

JOB NO:	19216
DRAWING NO:	TP06
REVISION:	P2

**watson
young**



ARTIST'S IMPRESSION

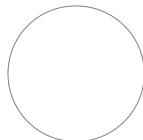
NO.	DATE	REVISION	BY	CHK
P1	11.06.2021	PRELIMINARY ISSUE	LT	AS
P2	17.06.2021	PRELIMINARY ISSUE	LT	AS

All areas indicated are indicative for design and planning purposes only and should not be used for any contractual reasons without verification by a licensed surveyor or further design development being completed.

Watson Young Architects P/L Melbourne | Perth | Sydney 03 9516 8555 ACN: 111388700
8 Gratlam Street Prahran VIC 3181 info@watsonyoung.com.au www.watsonyoung.com.au
© Watson Young Architects. This drawing is protected by copyright.

PROJECT:
NEW OFFICE, 225 BUTLER BOULEVARD,
BUTLER WA, 6036

TITLE:
3D VIEW



CLIENT:
Castlerock

DATE: JUNE, 2021
DRAWN BY: GN
SCALE: @A1
SCALE:

JOB NO:	19216
DRAWING NO:	TP07
REVISION:	P2

**watson
young**



LEGEND

EXTENT OF WORK

PEDESTRAIN FOOTPATH

CARPARK TREE PLANTING

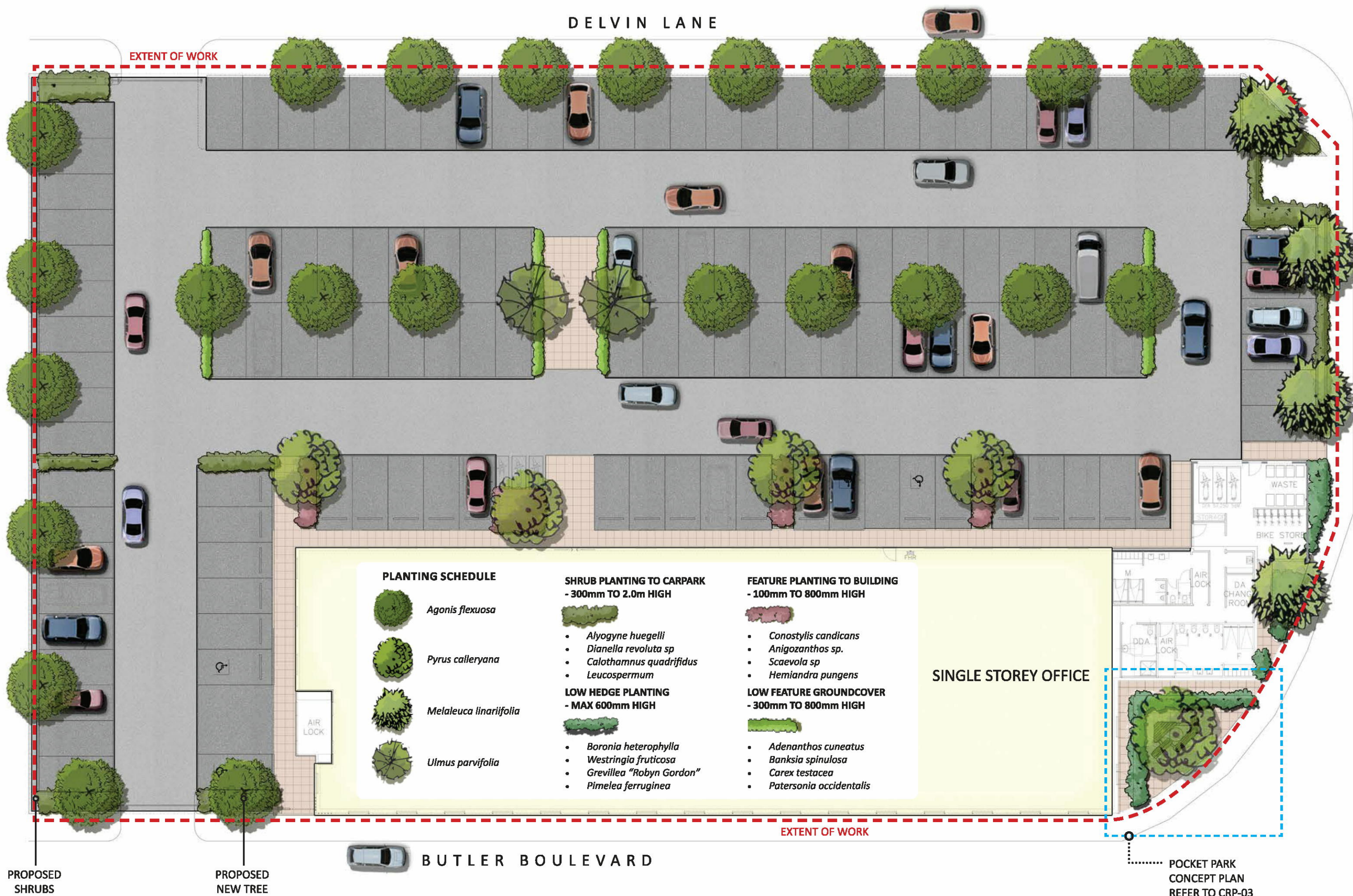


NATIVE SHRUB PLANTING







PLANTER & SEATING






PLANTING SCHEDULE

-  *Agonis flexuosa*
-  *Pyrus calleryana*
-  *Melaleuca linariifolia*
-  *Ulmus parvifolia*


SHRUB PLANTING TO CARPARK
- 300mm TO 2.0m HIGH

-  *Alyogyne huegelli*
- Dianella revoluta* sp
- Calothamnus quadrifidus*
- Leucospermum*


LOW HEDGE PLANTING
- MAX 600mm HIGH

-  *Boronia heterophylla*
- Westringia fruticosa*
- Grevillea "Robyn Gordon"*
- Pimelea ferruginea*

FEATURE PLANTING TO BUILDING
- 100mm TO 800mm HIGH

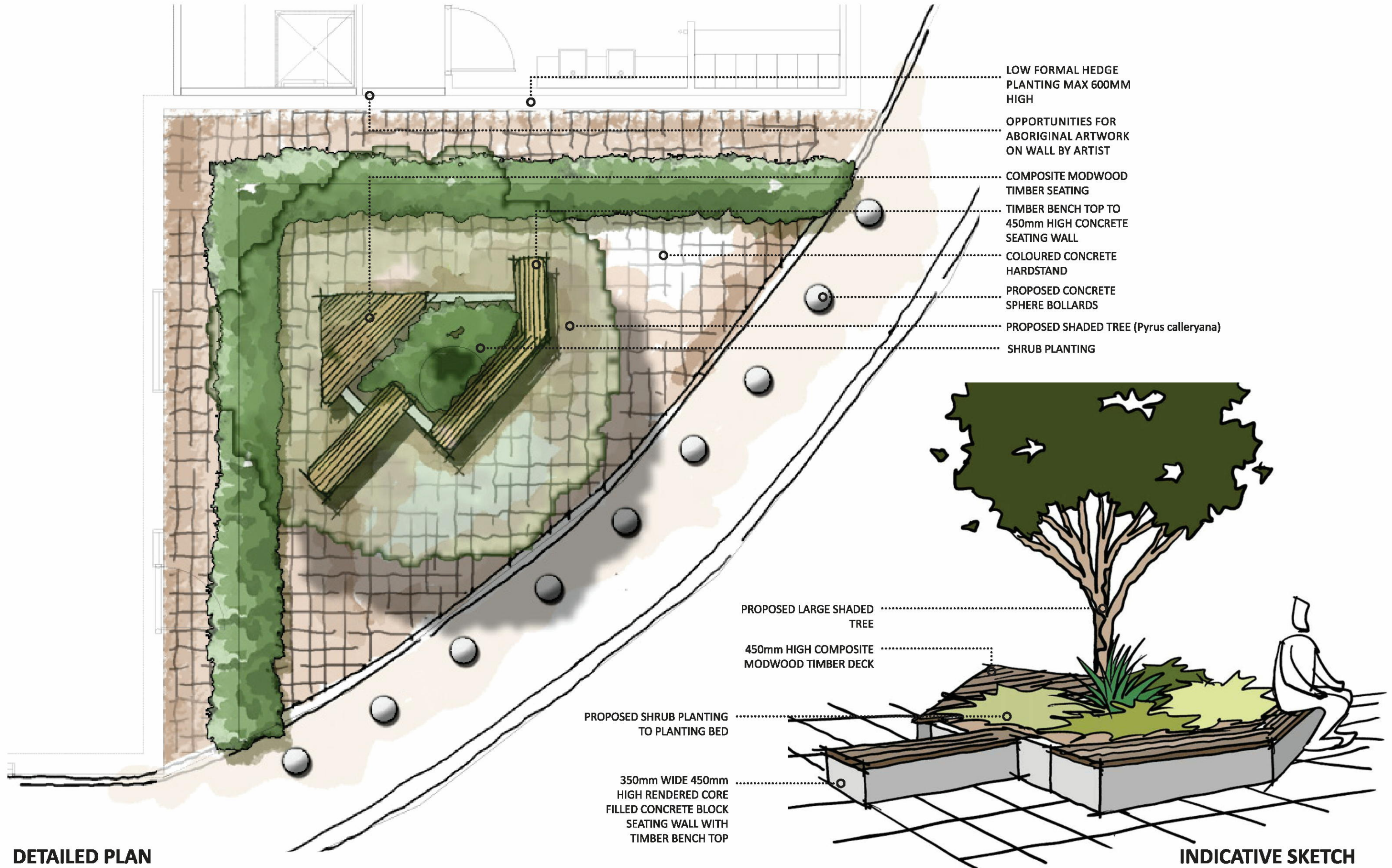
-  *Conostylis candicans*
- Anigozanthos* sp.
- Scaevola* sp
- Hemiantra pungens*

LOW FEATURE GROUNDCOVER
- 300mm TO 800mm HIGH

-  *Adenanthos cuneatus*
- Banksia spinulosa*
- Carex testacea*
- Patersonia occidentalis*

SINGLE STOREY OFFICE

POCKET PARK
CONCEPT PLAN
REFER TO CRP-03



PLANTING PALETTE

SHRUB PLANTING



Adenanthos cuneatus
Height: 0.2 ~ 0.3 metres
Width: 1.5 ~ 2 metres



Boronia heterophylla
Height: 0.6 ~ 1.2 metres
Width: 0.6 ~ 1 metre



Conostylis candicans
Height: 0.3 ~ 0.8 metres
Width: 0.3 ~ 0.8 metres



Leucospermum
Height: 2 ~ 3.6 metres
Width: 1.5 ~ 2 metres



Alyogyne huegelli
Height: 2 ~ 2.5 metres
Width: 2.5 metres



Scaevola sp
Height: 0.4 ~ 0.5 metres
Width: 0.4 ~ 1 metre



Dianella revoluta sp
Height: 0.25 ~ 0.3 metres
Width: 0.3 ~ 0.4 metres



Patersonia occidentalis
Height: 0.4 ~ 0.6 metres
Width: 0.3 ~ 0.5 metres



Anigozanthos sp.
Height: 0.6 ~ 0.8 metres
Width: 0.5 ~ 0.6 metres



Calothamnus quadrifidus
Height: 0.2 ~ 0.4 metres
Width: 1.5 ~ 2.5 metres



Grevillea "Robyn Gordon"
Height: 1 ~ 1.5 metre
Width: 0.5 ~ 1.5 metres



Pimelea ferruginea
Height: 0.75 ~ 1 metre
Width: 0.5 ~ 0.8 metres



Banksia spinulosa
Height: 0.5 ~ 0.8 metres
Width: 0.5 metres



Carex testacea
Height: 0.3 ~ 0.6 metres
Width: 0.3 ~ 0.6 metres



Hemiandra pungens
Height: 0.1 ~ 0.2 metres
Width: 0.5 ~ 0.75 metres



Westringia fruticosa
Height: 0.6 ~ 1.2 metres
Width: 0.6 ~ 1.2 metres

TREE PLANTING



Pyrus calleryana
Height: 11 ~ 12 metres
Width: 1 ~ 3 metres



Ulmus parvifolia
Height: 13 metres
Width: 10 metres



Agonis flexuosa
Height: 3 ~ 6 metres
Width: 2 ~ 4 metres



Melaleuca linariifolia
Height: 2 ~ 2.5 metres
Width: 2 ~ 3 metres

