

ATTACHMENT 4
Acoustic Assessment

**PROPOSED 100 PLACE CHILD CARE CENTRE
KINGSWAY, LANDSDALE**

ENVIRONMENTAL ACOUSTIC ASSESSMENT

JULY 2021

OUR REFERENCE: 28192-1-21247

DOCUMENT CONTROL PAGE

ENVIRONMENTAL ACOUSTIC ASSESSMENT
PROPOSED 100 PLACE CHILD CARE CENTRE
KINGSWAY, LANDSDALE

Job No: 21247

Document Reference : 28192-1-21247

FOR

LEYTON PROPERTY

DOCUMENT INFORMATION

Author:	Tim Reynolds	Checked By:	Paul Daly
Date of Issue :	12 August 2020		

REVISION HISTORY

Revision	Description	Date	Author	Checked

DOCUMENT DISTRIBUTION

Copy No.	Version No.	Destination	Hard Copy	Electronic Copy
1	1	Dynamic Planning Attn : Cody Meyer Email : cody@dynamicplanning.net.au		✓

This report has been prepared in accordance with the scope of services and on the basis of information and documents provided to Herring Storer Acoustics by the client. To the extent that this report relies on data and measurements taken at or under the times and conditions specified within the report and any findings, conclusions or recommendations only apply to those circumstances and no greater reliance should be assumed. The client acknowledges and agrees that the reports or presentations are provided by Herring Storer Acoustics to assist the client to conduct its own independent assessment.

CONTENTS

1.	INTRODUCTION	1
2.	SUMMARY	2
3.	CRITERIA	3
4.	PROPOSAL	6
5.	MODELLING	6
6.	ASSESSMENT	8
7.	CONCLUSION	11

APPENDICIES

A	PLANS
B	REGULATION 16 AND SCHEDULE 2

1. INTRODUCTION

Herring Storer Acoustics were commissioned to undertake an acoustic assessment of noise emissions associated with the proposed 100 place day care centre to be located on Kingsway, Landsdale. As shown on Figure 1.1 below, the existing residences are to the north and east of the proposed child care.



FIGURE 1.1 – LOCALITY PLAN

The report considers noise received at the neighbouring premises from the proposed development for compliance with the requirements of the *Environmental Protection (Noise) Regulations 1997*. This report considers noise emissions from :

- Children playing within the outside play areas of the centre; and
- Mechanical services.

We note that from information received from DWER, the bitumised area would be considered as a road, thus noise relating to motor vehicles is exempt from the *Environmental Protection (Noise) Regulations 1997*. We note that these noise sources are rarely critical in the determination of compliance. However, as requested by council and for completeness, they have been included in the assessment, for information purposes only.

For information, a plan of the proposed development is attached in Appendix A.

2. SUMMARY

The closest existing residence is to the south and east, as shown on Figure 1.1 above. Noise received at these residences would comply with the requirements of the Environmental Protection (Noise) Regulations 1997, with the inclusion of solid fencing, as shown on Figure 5.1 in Section 5 – Modelling. It is noted that compliance at the future possible neighbouring residence to the north east would also comply with the assigned noise levels.

Noise from the mechanical services has also been assessed to comply with the relevant criteria.

It is noted that noise associated with car movements and cars starting are exempt from complying with the Regulations. However, noise emissions from car doors is not strictly exempt from the Regulations. Noise received at the neighbouring residences from these noise sources would comply with the Regulatory requirements, with the restriction to night period parking, as shown on Figure 5.2 in Section 5 – Modelling.

Notes :

- 1 Although the proposed facility would open before 7 am (ie during the night period), the outdoor play area would not be used until after 7am. Thus, noise received at the neighbouring existing residences from the outdoor play area needs to comply with the assigned day period noise level.
- 2 We note that colourbond fencing is acceptable as the boundary fence to the outdoor area.
- 3 With regards to the noise emissions from the outdoor play area, an alternative to the angled section of fencing along the eastern boundary as indicated on Figure 5.1 in Section 5, would be to limit the number of children outside at anyone time to the 20 off 0 – 24 months and 60 off 2 – 5 years (ie a reduction of 20 children over the age of 2).
- 4 Night period parking would be restricted, as shown on Figure 5.2 in Section 5.
- 5 Under Regulation 16 – Community Noise, noise received at the neighbouring residences from the outdoor play area would be exempt for needing to comply with the Regulations 7 and 8 (ie the assigned noise levels). However, for the existing residence, this could be considered as increase in the community noise, thus, an assessment for compliance with the assigned noise levels has been undertaken.
- 6 For the air conditioning condensing units during the night period, not all air conditioning units need to be operated. Thus, the noise modelling allows for 2 air conditioning units to operate. Additionally, the air conditioning condensing units are to contain night period low noise modes.

Additionally, it is noted that Under Regulation 16 – Community Noise, noise received at the neighbouring residences from the outdoor play area would be exempt for needing to comply with the Regulations 7 and 8 (ie the assigned noise levels). However, for the existing residences located to the south and east, this could be considered as increase in the community noise, thus, an assessment for compliance with the assigned noise levels has been undertaken.

Thus, noise emissions from the proposed development, would be deemed to comply with the requirements of the *Environmental Protection (Noise) Regulations 1997* for the proposed hours of operation.

3. CRITERIA

The allowable noise level at the surrounding locales is prescribed by the *Environmental Protection (Noise) Regulations 1997*. For this child care centre, there are 2 situations relating to compliance at the neighbouring residence, given that some residence are existing and some are still to be developed.

Noting that the child care centre is an educational facility, that would be regulated under the *Education and Care Services National Law* and the *Education and Care Services National Regulations* (assessed under the *National Quality Framework* against National Quality Standard benchmark for early childhood education) governed by the Education and Care Regulatory Unit (Department of Communities), the requirements of Regulation 16 – Community Noise would be applicable. Thus, under this Regulation, noise from educational facilities are classified as community noise and Regulation 7 – Prescribed Standard for Noise Emissions, does not apply to community noise. From Schedule 3 of the Regulations :

4. *Noise emitted as a consequence of a recreational or educational activity from premises occupied for educational purposes if the activity –*
 - (a) *is conducted under the control of the occupier of the premises; and*
 - (b) *does not include the use of mechanical equipment other than musical instruments.*

We note that we believe that the relevant part of Regulation 16, is clause 4, relating to conditions when a noise control notice can be issue in relation to community noise :

- (4) *If the CEO is satisfied that –*
 - (a) *a type of community noise has increased, or has increased its effect on the environment, since the coming into operation of these regulations; or*
 - (b) *a type of community noise has, or is likely to have, a detrimental effect on the environment that exceeds the benefit to the community of the activity that gives rise to that noise,*

the CEO may cause to be served on the owner or the occupier, or on both the owner and the occupier, of the premises or public place a noise control notice in respect of the community noise.

As noise associated with outdoor play would be under the control of the occupier of the premises, Regulations 7 and hence, the assigned noise level would not apply. Thus, for the future residence, as the environment would include the child care centre, the assigned noise levels would not be applicable. However, for the existing residence, the introduction of the child care centre could increase the community noise, to be considered as NOT being unreasonable, compliance with the assigned noise levels should be achieved.

Note : For reference, Regulation 16 and Schedule 2 of the *Environmental Protection (Noise) Regulations 1997* are attached in Appendix B.

Regulations 7 & 8 stipulate maximum allowable external noise levels. For highly sensitive area of a noise sensitive premises this is determined by the calculation of an influencing factor, which is then added to the base levels shown below in Table 3.1. The influencing factor is calculated for the usage of land within two circles, having radii of 100m and 450m from the premises of concern. For other areas within a noise sensitive premises, the assigned noise levels are fixed throughout the day, as listed in Table 3.1.

TABLE 3.1 - BASELINE ASSIGNED OUTDOOR NOISE LEVEL

Premises Receiving Noise	Time of Day	Assigned Level (dB)		
		L _{A10}	L _{A1}	L _{Amax}
Noise sensitive premises : highly sensitive area	0700 - 1900 hours Monday to Saturday (Day)	45 + IF	55 + IF	65 + IF
	0900 - 1900 hours Sunday and Public Holidays (Sunday / Public Holiday Day)	40 + IF	50 + IF	65 + IF
	1900 - 2200 hours all days (Evening)	40 + IF	50 + IF	55 + IF
	2200 hours on any day to 0700 hours Monday to Saturday and 0900 hours Sunday and Public Holidays (Night)	35 + IF	45 + IF	55 + IF

Note: L_{A10} is the noise level exceeded for 10% of the time.
 L_{A1} is the noise level exceeded for 1% of the time.
 L_{Amax} is the maximum noise level.
 IF is the influencing factor.

It is a requirement that received noise be free of annoying characteristics (tonality, modulation and impulsiveness), defined below as per Regulation 9.

“impulsiveness” means a variation in the emission of a noise where the difference between L_{Apeak} and L_{Amax(Slow)} is more than 15 dB when determined for a single representative event;

“modulation” means a variation in the emission of noise that –

- (a) is more than 3 dB L_{Afast} or is more than 3 dB L_{Afast} in any one-third octave band;
- (b) is present for more at least 10% of the representative assessment period; and
- (c) is regular, cyclic and audible;

“tonality” means the presence in the noise emission of tonal characteristics where the difference between –

- (a) the A-weighted sound pressure level in any one-third octave band; and
- (b) the arithmetic average of the A-weighted sound pressure levels in the 2 adjacent one-third octave bands,

is greater than 3 dB when the sound pressure levels are determined as L_{Aeq,T} levels where the time period T is greater than 10% of the representative assessment period, or greater than 8 dB at any time when the sound pressure levels are determined as L_{ASlow} levels.

Where the noise emission is not music, if the above characteristics exist and cannot be practicably removed, then any measured level is adjusted according to Table 3.2 below.

TABLE 3.2 - ADJUSTMENTS TO MEASURED LEVELS

Where tonality is present	Where modulation is present	Where impulsiveness is present
+5 dB(A)	+5 dB(A)	+10 dB(A)

Note: These adjustments are cumulative to a maximum of 15 dB.

For this development, the closest neighbouring residences of concern to the proposed development, are located to the north and east of the development. For information the subdivision plan showing the neighbouring residences is shown below, as Figure 3.1.

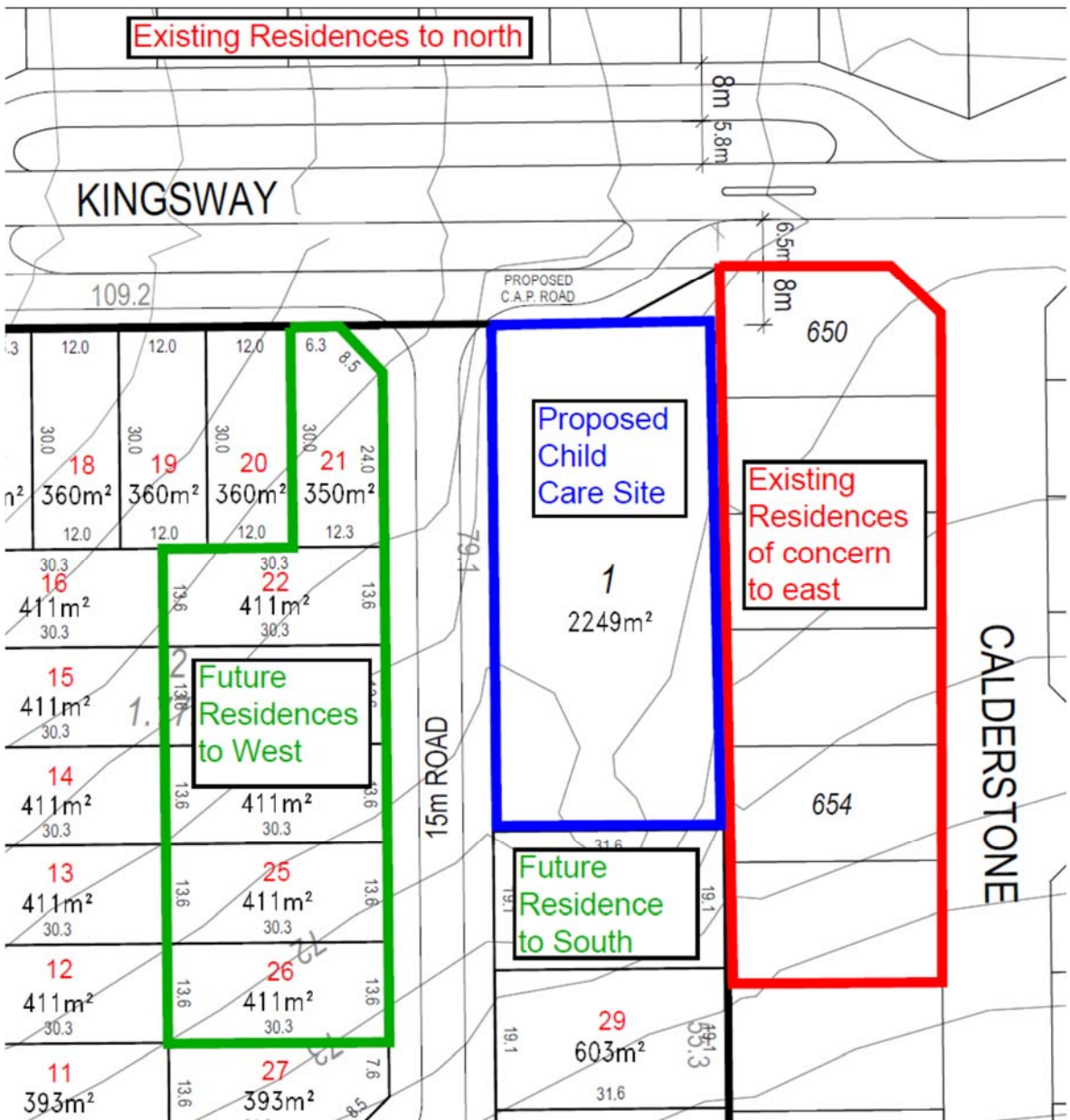


FIGURE 3.1 – NEIGHBOURING LOTS

At the neighbouring residences, both existing and future, the influencing factor has been determined to be 0 dB. Thus, the assigned noise levels would be as listed in Table 3.3.

TABLE 3.3 - ASSIGNED OUTDOOR NOISE LEVEL

Premises Receiving Noise	Time of Day	Assigned Level (dB)		
		L _{A10}	L _{A1}	L _{Amax}
Noise sensitive premises : highly sensitive area	0700 - 1900 hours Monday to Saturday (Day)	45	55	65
	0900 - 1900 hours Sunday and Public Holidays (Sunday / Public Holiday Day)	40	50	65
	1900 - 2200 hours all days (Evening)	40	50	55
	2200 hours on any day to 0700 hours Monday to Saturday and 0900 hours Sunday and Public Holidays (Night)	35	45	55

Note: L_{A10} is the noise level exceeded for 10% of the time.
L_{A1} is the noise level exceeded for 1% of the time.
L_{Amax} is the maximum noise level.

4. PROPOSAL

From information supplied, we understand that the child care centre normal hours of operations would be between 0630 and 1830 hours, Monday to Friday (closed on public holidays). It is understood that the proposed childcare centre will cater for a maximum of 100 children; with the following breakdown :

Room 1	0 – 2 years	8 places
Room 2	0 – 2 years	12 places
Room 3	2 – 3 years	15 places
Room 4	2 – 3 years	15 places
Room 5	3 – 4 years	20 places
Room 6	4 – 5 years	30 places

It is noted that although the proposed child care centre would open before 7 am (ie during the night period), the outdoor play area would not be used until after 7am.

5. MODELLING

To assess the noise received at the existing neighbouring premises to the north east from the proposed development, noise modelling was undertaken using the noise modelling program SoundPlan.

Calculations were carried out using the DWER's weather conditions, which relate to worst case noise propagation, as stated in the Department of Environment Regulation "Draft Guidance on Environmental Noise for Prescribed Premises". These conditions include winds blowing from sources to the receiver(s).

Calculations were based on the sound power levels used in the calculations are listed in Table 5.1.

TABLE 5.1 – SOUND POWER LEVELS

Item	Sound Power Level, dB(A)
Children Playing	83 (per 10 children)
Car Moving in Car Park	79
Car Starting	85
Door Closing	87
Air conditioning condensing Unit	4 @ 71

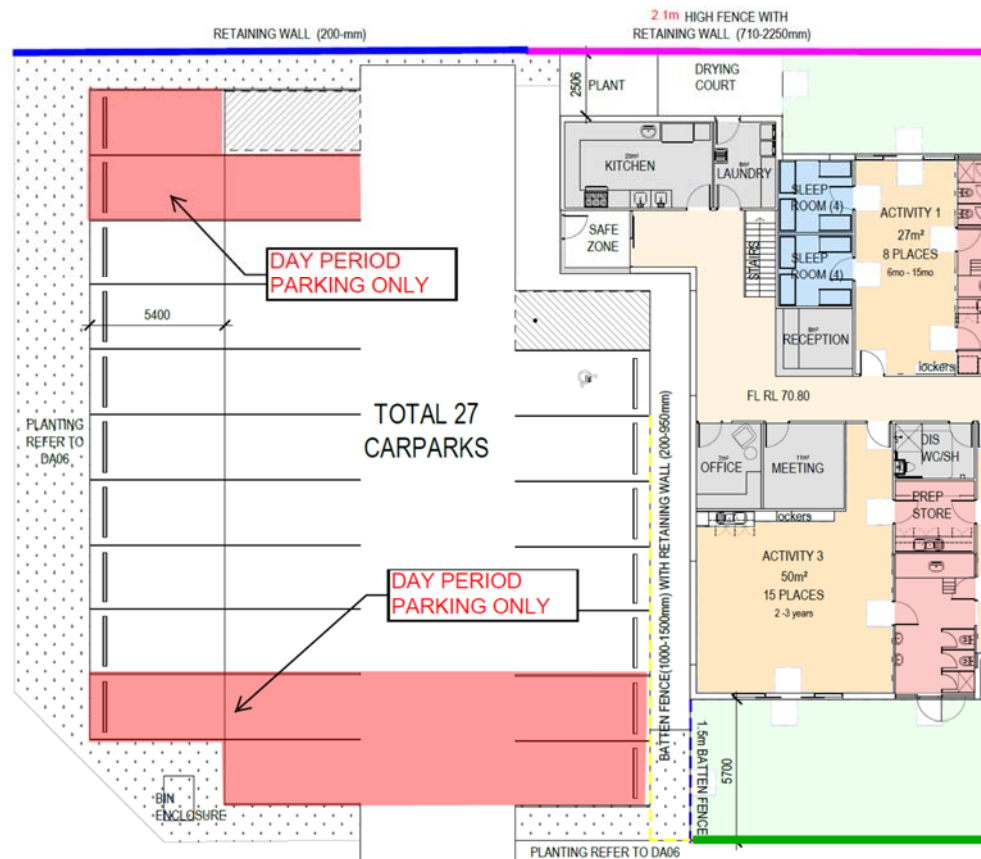


FIGURE 5.2 – NIGHT PERIOD CAR PARKING RESTRICTION

6. ASSESSMENT

The resultant noise levels at the neighbouring residence from children playing outdoors and the mechanical services are tabulated in Table 6.1. We note that 8 Calderstone Rise is a 2 storey residence and contains a window on the western façade.

From previous measurements, noise emissions from children playing does not contain any annoying characteristics. Noise emissions from the mechanical services could be tonal and a +5 dB(A) penalty would be applicable, as shown in Table 6.1. Noise emissions from both outdoor play and the mechanical services needs to comply with the assigned L_{A10} noise levels.

TABLE 6.1 - ACOUSTIC MODELLING RESULTS FOR L_{A10} CRITERIA
 OUTDOOR PLAY AREAS AND MECHANICAL PLANT

Neighbouring Premises	Calculated Noise Level (dB(A))		
	Children Playing	Air Conditioning	
		Day	Night
Existing - North	39	30 (35)	21 (26)
Existing - East	45	38 (43)	29 (34)
Future – South	45	15 (20)	6 (11)
Future – West	45	14 (19)	5 (10)

() Includes +5 dB(A) penalty for tonality

Note : With regards to the noise emissions from the outdoor play area, an alternative to the angled section of fencing along the eastern boundary, would be to limit the number of children outside at anyone time to the 20 off 0 – 24 months and 60 off 2 – 5 years (ie a reduction of 20 children over the age of 2).

With regards to noise associated with cars within the parking area, resultant noise levels are tabulated in Tables 6.2 and 6.3. It is noted that noise emissions from a moving car being an L_{A1} noise level, with noise emissions from cars starting and doors closing being an L_{Amax} noise level.

Based on the definitions of tonality, noise emissions from car movements and car starts, being an L_{A1} and L_{Amax} respectively, being present for less than 10% of the time, would not be considered tonal. Thus, no penalties would be applicable, and the assessment would be as listed in Table 6.2 (Car Moving) and Table 6.3 (Car Starting). However, noise emissions from car doors closing could be impulsive, hence the +10dB penalty has been included in the assessment.

**TABLE 6.2 - ACOUSTIC MODELLING RESULTS L_{A1} CRITERIA
CAR MOVING**

Neighbouring Premises	Calculated Noise Level (dB(A))
Existing - North	41
Existing - East	43
Future – South	22
Future – West	42

**TABLE 6.3 - ACOUSTIC MODELLING RESULTS L_{Amax} CRITERIA
CAR STARTING / DOOR CLOSING**

Neighbouring Premises	Calculated Noise Level (dB(A))			
	Car Starting		Door Closing	
	Day Period	Night Period	Day Period	Night Period
Existing - North	46	46	45 [55]	45 [55]
Existing - East	45	43	49 [59]	45 [55]
Future – South	23	17	29 [39]	25 [35]
Future – West	45	43	47 [57]	45 [55]

[] Includes +10 dB(A) penalty for impulsiveness.

Tables 6.4 to 6.11 summarise the applicable Assigned Noise Levels, and assessable noise level emissions for each identified noise.

**TABLE 6.4 – ASSESSMENT OF L_{A10} NOISE LEVEL EMISSIONS
OUTDOOR PLAY (DAY PERIOD)**

Location	Assessable Noise Level dB(A)	Applicable Assigned Noise Level (dB(A))	Exceedance to Assigned Noise Level
Existing - North	39	45	Complies
Existing - East	45	45	Complies
Future – South	45	45	Complies
Future – West	45	45	Complies

**TABLE 6.5 – ASSESSMENT OF L_{A10} DAY PERIOD NOISE LEVEL EMISSIONS
AIR CONDITIONING**

Location	Assessable Noise Level dB(A)	Applicable Assigned Noise Level (dB(A))	Exceedance to Assigned Noise Level
Existing - North	35	45	Complies
Existing - East	43	45	Complies
Future – South	20	45	Complies
Future – West	19	45	Complies

**TABLE 6.6 – ASSESSMENT OF L_{A10} NIGHT PERIOD NOISE LEVEL EMISSIONS
 AIR CONDITIONING**

Location	Assessable Noise Level dB(A)	Applicable Assigned Noise Level (dB(A))	Exceedance to Assigned Noise Level
Existing - North	26	35	Complies
Existing - East	34	35	Complies
Future – South	11	35	Complies
Future – West	10	35	Complies

**TABLE 6.7 – ASSESSMENT OF L_{A1} NIGHT PERIOD NOISE LEVEL EMISSIONS
 CAR MOVEMENTS**

Location	Assessable Noise Level dB(A)	Applicable Assigned Noise Level (dB(A))	Exceedance to Assigned Noise Level
Existing - North	41	45	Complies
Existing - East	43	45	Complies
Future – South	22	45	Complies
Future – West	42	45	Complies

**TABLE 6.8 – ASSESSMENT OF L_{Amax} DAY PERIOD NOISE LEVEL EMISSIONS
 CAR STARTING**

Location	Assessable Noise Level dB(A)	Applicable Assigned Noise Level (dB(A))	Exceedance to Assigned Noise Level
Existing - North	46	65	Complies
Existing - East	45	65	Complies
Future – South	23	65	Complies
Future – West	45	65	Complies

**TABLE 6.9 – ASSESSMENT OF L_{Amax} NIGHT PERIOD NOISE LEVEL EMISSIONS
 CAR STARTING**

Location	Assessable Noise Level dB(A)	Applicable Assigned Noise Level (dB(A))	Exceedance to Assigned Noise Level
Existing - North	46	55	Complies
Existing - East	43	55	Complies
Future – South	23	55	Complies
Future – West	43	55	Complies

**TABLE 6.10 – ASSESSMENT OF L_{Amax} DAY PERIOD NOISE LEVEL EMISSIONS
 CAR DOOR**

Location	Assessable Noise Level dB(A)	Applicable Assigned Noise Level (dB(A))	Exceedance to Assigned Noise Level
Existing - North	55	65	Complies
Existing - East	59	65	Complies
Future – South	39	65	Complies
Future – West	57	65	Complies

**TABLE 6.11 – ASSESSMENT OF L_{Amax} NIGHT PERIOD NOISE LEVEL EMISSIONS
 CAR DOOR**

Location	Assessable Noise Level dB(A)	Applicable Assigned Noise Level (dB(A))	Exceedance to Assigned Noise Level
Existing - North	55	55	Complies
Existing - East	55	55	Complies
Future – South	35	55	Complies
Future – West	55	55	Complies

7. CONCLUSION

Noise received at the existing and possible future residences from the outdoor play area would comply with day period assigned noise level.

The air conditioning condensing units have also been assessed to comply with the requirements of the *Environmental Protection (Noise) Regulations 1997* at all times.

It is noted that noise associated with cars movements and cars starting are exempt from complying with the Regulations. However, noise emissions from car doors is not strictly exempt from the Regulations. Noise received at the existing neighbouring residences from these noise sources would with the boundary fencing, as shown in Figure 5.1 in Section 5 (which are reflected in the drawings attached in Appendix A) and the restrictions to the night period parking, as shown in Figure 5.2 in Section 5 comply with the Regulatory requirements, at all times.

Thus, noise emissions from the proposed development, would be deemed to comply with the requirements of the *Environmental Protection (Noise) Regulations 1997* for the proposed hours of operation, with the inclusion of the mitigation as outlined above.

Notes :

- 1 Although the child care would be open before 7am, no outdoor play would be allowed until after 7am.
- 2 With regards to the noise emissions from the outdoor play area, an alternative to the angled section of fencing along the eastern boundary as indicated on Figure 5.1 in Section 5, would be to limit the number of children outside at anyone time to the 20 off 0 – 24 months and 60 off 2 – 5 years (ie a reduction of 20 children over the age of 2).
- 3 Night period parking would be restricted, as shown on Figure 5.2 in Section 5.
- 4 Under Regulation 16 – Community Noise, noise received at the neighbouring residences from the outdoor play area would be exempt for needing to comply with the Regulations 7 and 8 (ie the assigned noise levels). However, for the existing residence, this could be considered as increase in the community noise, thus, an assessment for compliance with the assigned noise levels has been undertaken.
- 5 We note that colourbond fencing is acceptable as the boundary fence to the outdoor area.
- 6 For the air conditioning condensing units during the night period, not all air conditioning units need to be operated. Thus, the noise modelling allows for 2 air conditioning units to operate. Additionally, the air conditioning condensing units are to contain night period low noise modes.

APPENDIX A

PLANS

PRELIMINARY

ARCH DRAWING SCHEDULE

No.	Sheet Name
DA01	FRONT COVER DRAWING SCHEDULE
DA02	SITE PLAN
DA03	SUBDIVISION SITE PLAN
DA04	PROPOSED FLOOR PLAN
DA05	PROPOSED ROOF PLAN
DA06	LANDSCAPING PLAN
DA07	PROPOSED ELEVATIONS
DA08	FENCE ELEVATIONS
DA09	SITE SECTIONS
DA10	MATERIALS SELECTIONS
DA11	3D CONCEPT IMAGES

Rev	Amendment	Date
-	-	-



Project
100 PLACE CHILD CARE FACILITY
Kingsway, Landsdale WA

Drawing
DRAWING SCHEDULE

Scale As indicated Drawn
Client LEYTON PROPERTY
Date 04/08/2021
Job No. 202100033
Dwg No. **DA01**

Rev: - A3 SHEET





SITE PLAN

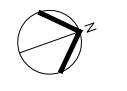
1:300



Project
100 PLACE CHILD CARE FACILITY
 Kingsway, Landsdale WA

Drawing
SITE PLAN

Scale	As indicated	Drawn	MN
Client			
Date	04/08/2021		
Job No.	202100031		
Dwg No.	DA02	Rev:	- A3 SHEET





SUBDIVISION SITE PLAN
1:1000



Project
100 PLACE CHILD CARE FACILITY
 Kingsway, Landsdale WA

Drawing
 SUBDIVISION SITE PLAN

Scale 1:1000 Drawn MN
 Client LEYTON PROPERTY
 Date 23/06/2021
 Job No. 202100033
 Dwg No. DA03



Rev: A3 SHEET

PRELIMINARY

Rev	Amendment	Date
-	-	-



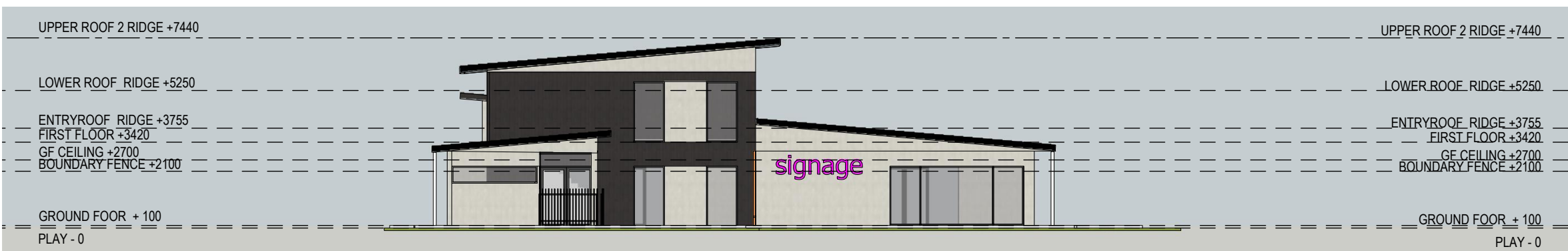
NORTH ELEVATION
1:200



EAST ELEVATION
1:200



WEST ELEVATION
1:200



SOUTH ELEVATION
1:200



Project
100 PLACE CHILD CARE FACILITY
Kingsway, Landsdale WA

Drawing
PROPOSED ELEVATIONS

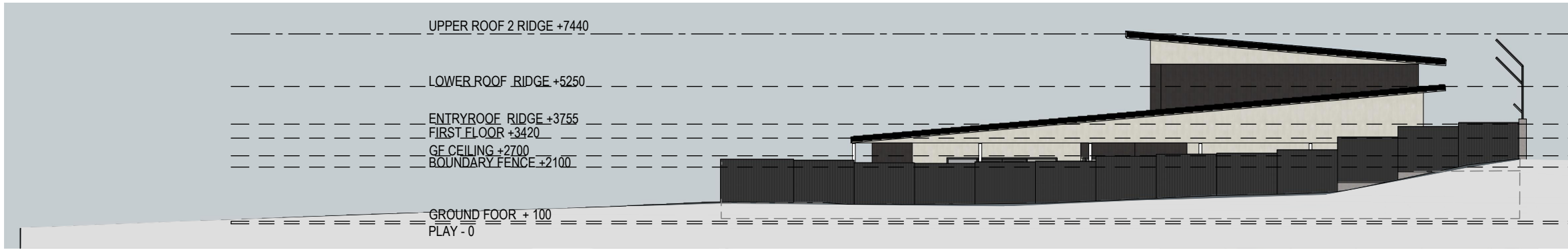
Scale As indicated Drawn XL
Client LEYTON PROPERTY
Date 04/08/2021
Job No. 202100033
Dwg No. **DA07**



Rev: - A3 SHEET

PRELIMINARY

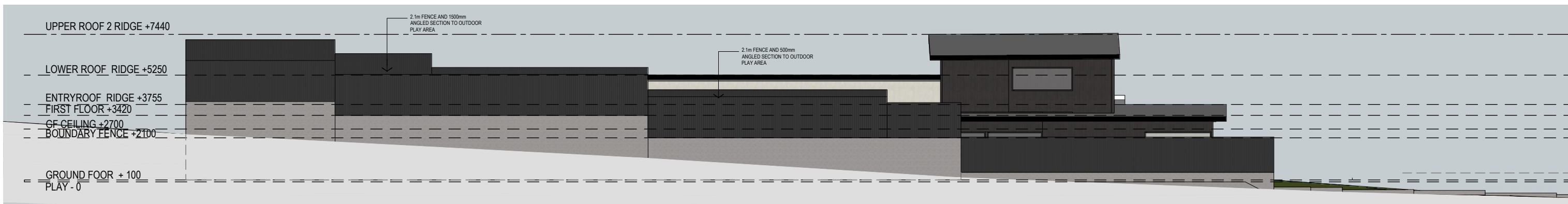
Rev	Amendment	Date
-	-	-



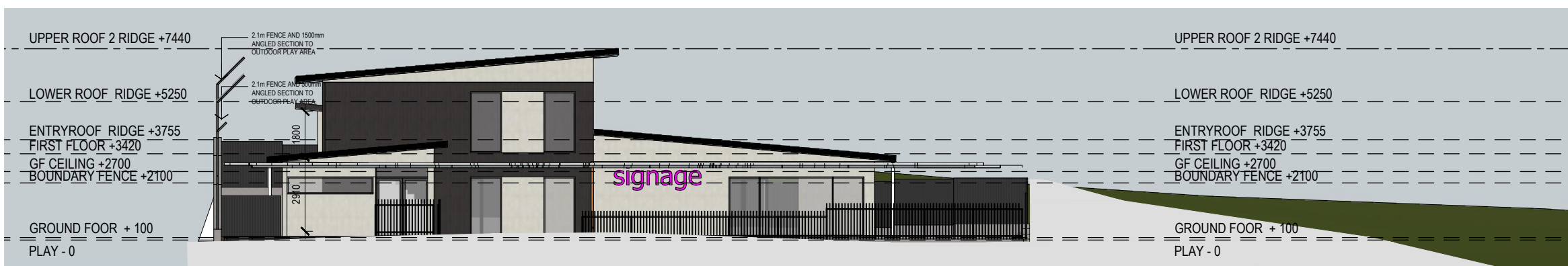
NORTH ELEVATION
1:200



EAST ELEVATION
1:200



WEST ELEVATION
1:200



SOUTH ELEVATION
1:200



Project
100 PLACE CHILD CARE FACILITY
Kingsway, Landsdale WA

Drawing
PROPOSED FENCE ELEVATIONS

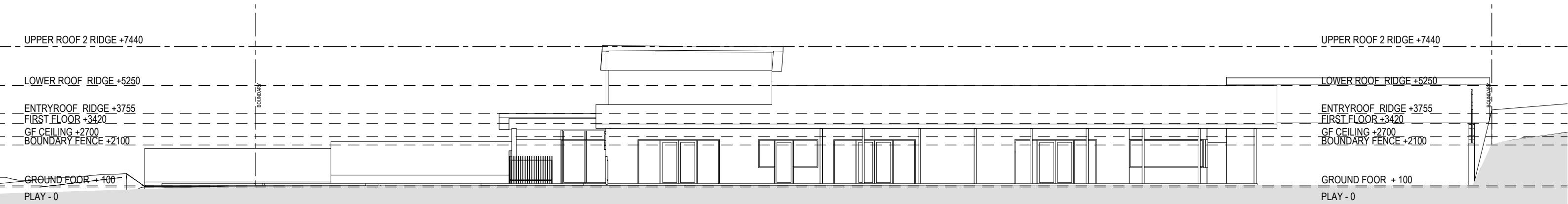
Scale	As indicated	Drawn	XL
Client	LEYTON PROPERTY		
Date	04/08/2021		
Job No.	202100033		
Dwg No.	DA08	Rev:	-



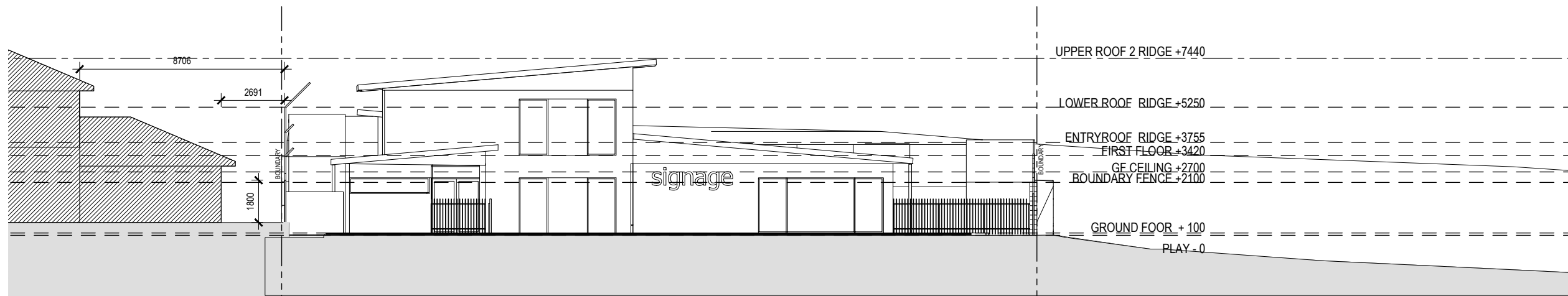
A3 SHEET

PRELIMINARY

Rev	Amendment	Date
-	-	-



SECTION A
1:200



SECTION B
1:200



Project
100 PLACE CHILD CARE FACILITY
Kingsway, Landsdale WA

Drawing
SITE SECTIONS

Scale	As indicated	Drawn	XL
Client	LEYTON PROPERTY		
Date	04/08/2021		
Job No.	202100033		
Dwg No.	DA09	Rev:	-



A3 SHEET

APPENDIX B

REGULATION 16 AND SCHEDULE 2

Schedule 2 — Community noise

[r. 16]

[Heading inserted: Gazette 5 Dec 2013 p. 5716.]

Item	Activity
1.	Noise emitted by spectators at a sporting activity that is — (a) arranged by a sporting organization; or (b) conducted at a sporting venue; or (c) advertised prior to the conduct of the event.
2.	Noise emitted by participants and spectators at a meeting or procession authorised under a permit granted under the <i>Public Order in Streets Act 1984</i> .
3.	Noise emitted from an assembly convened solely for the purpose of divine worship where — (a) the noise is not noise of a kind referred to in regulation 15(2); and (b) the premises or public place on which the worship takes place is land which is referred to in section 6.26(2)(d), (e) or (f) of the <i>Local Government Act 1995</i> .
4.	Noise emitted as a consequence of a recreational or educational activity from premises occupied for educational purposes if the activity — (a) is conducted under the control of the occupier of the premises; and (b) does not include the use of mechanical equipment other than musical instruments.
5.	Noise emitted from agricultural shows, fairs, fetes, exhibitions and like events.