

GENERAL	
CITY OF WANNEROO	
LOT 235	
R-CODE R20	
SITE AREA = 907.0m ²	
EXISTING SITE COVER = 262.7m ²	
EXISTING OPEN SPACE = 644.3m ² (71.0%)	
PROPOSED SITE COVER = 292.6m ²	
PROPOSED OPEN SPACE = 614.4m ² (67.7%)	
AREA	
EXISTING	
HOUSE	205.9
METAL SHED 1	42.1
METAL SHED 2	14.7
PROPOSED	
CARPOR	29.9



Superdraft Australia Pty Ltd
P 1300 939 740
W www.superdraft.com.au

Copyright Superdraft.
The information, ideas & concepts contained in this document is/are confidential. The recipient(s) of this document is/are prohibited from disclosing such information, ideas and concepts to any person without prior written consent of the copyright holder.

Site Plan

Carpport, Deck, Retaining

Development Approval

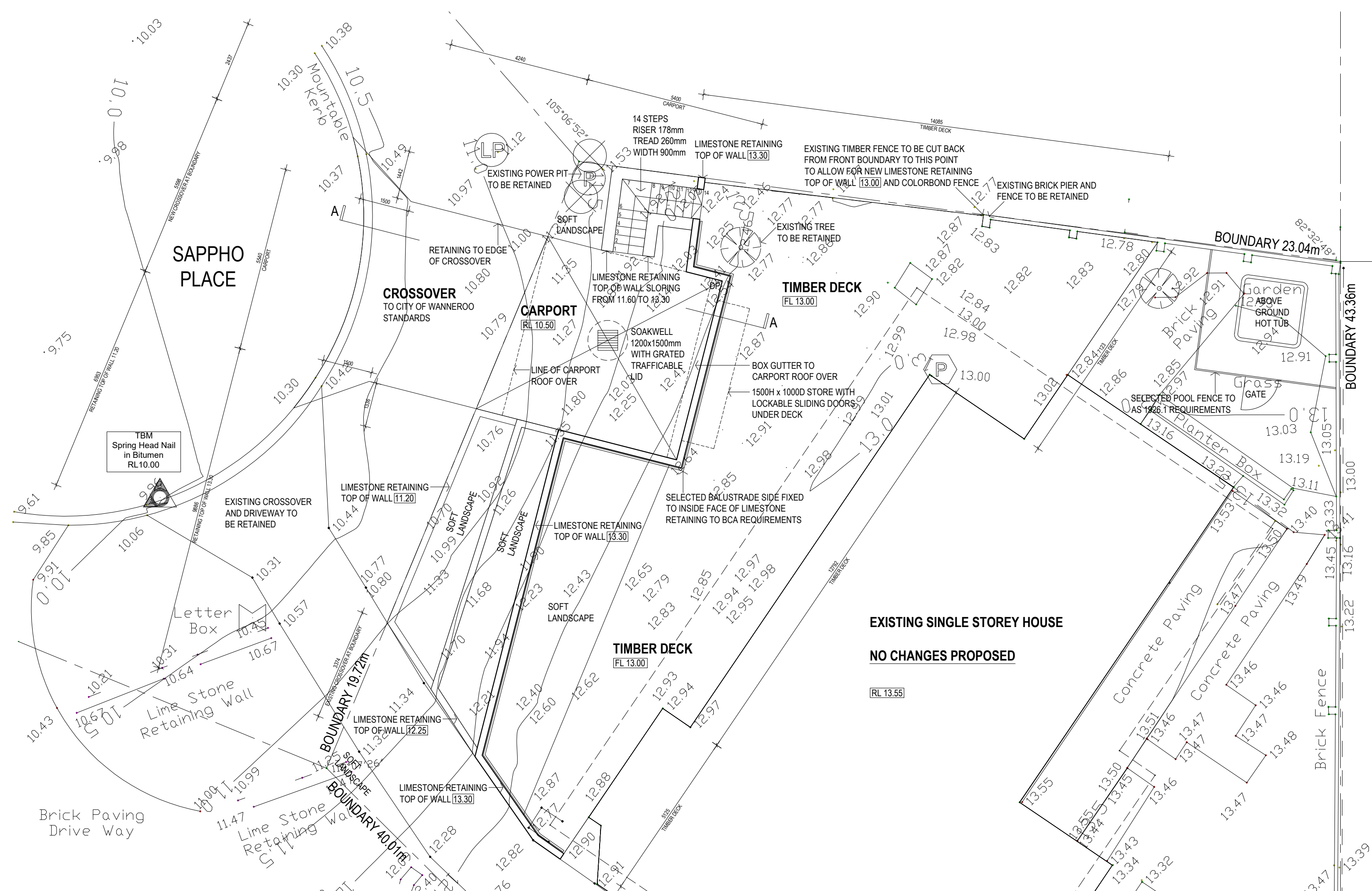
Ray Bartell

6 Sappho Place, Two Rocks, WA 6037

Designed By Keanjin Tay
Job No: SD21-3831
Page No: A.01
Scale @ A3 1:200

Rev 02
Date 26/09/2021
Drawn By Keanjin Tay
Amendment Issued to Client





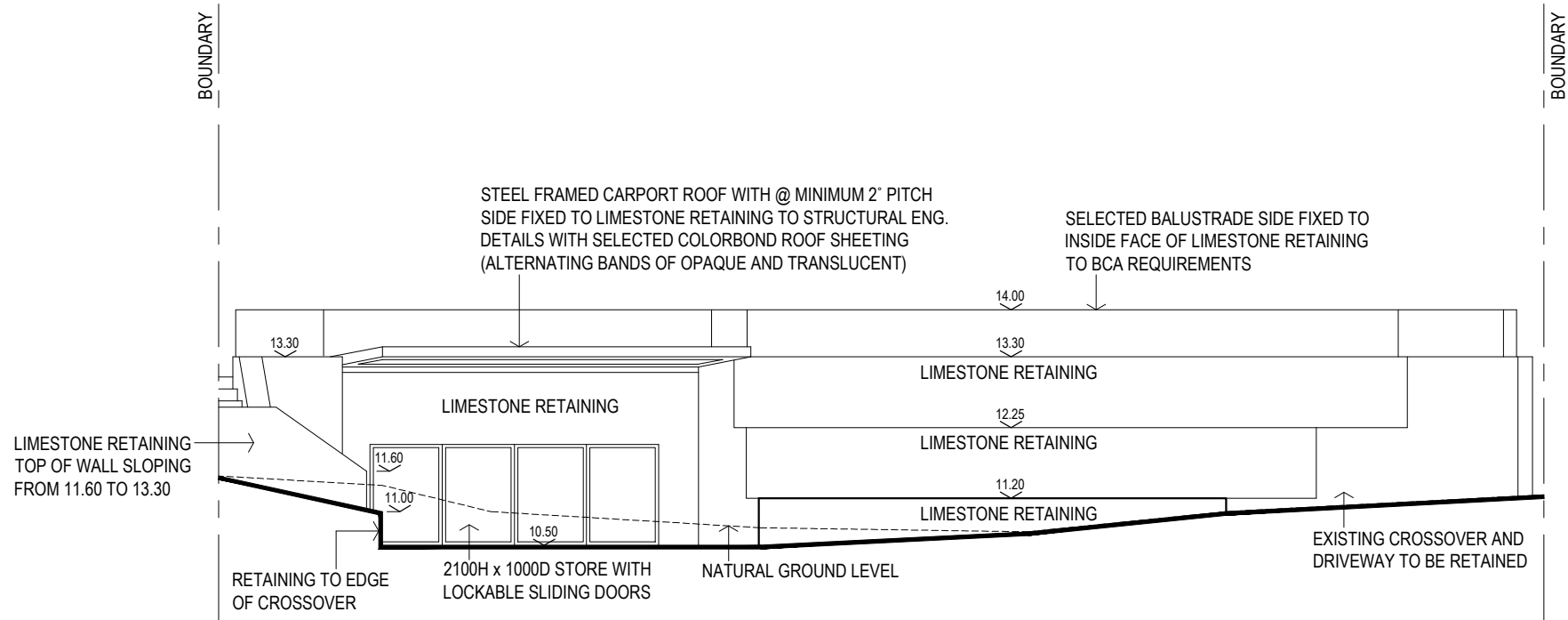
Copyright Superdraft.
 The information, ideas & concepts contained in this document is/are confidential. The recipient(s) of this document is/are prohibited from disclosing such information, ideas and concepts to any person without prior written consent of the copyright holder.

Floor Plan

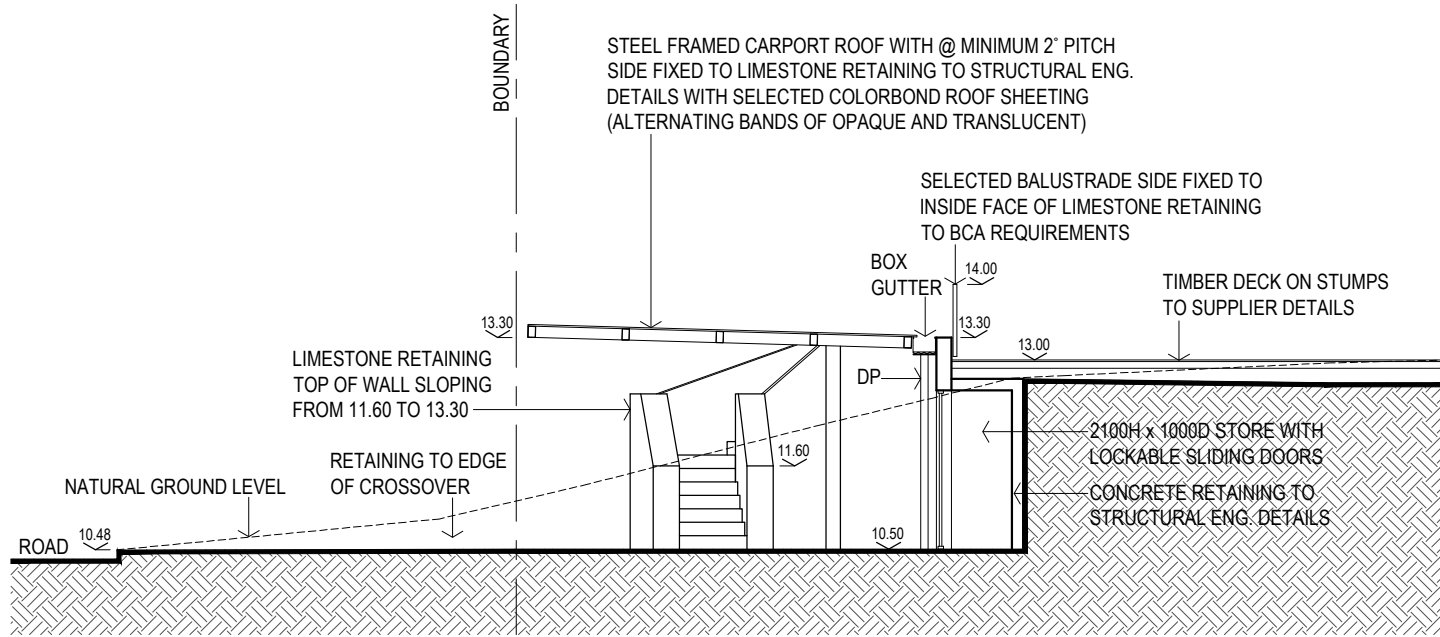
Carport, Deck, Pool
 Development Approval

Ray Bartell
 6 Sappho Place, Two Rocks, WA 6037





ELEVATION (AT FRONT BOUNDARY)
SCALE - 1 : 100



ELEVATION (AT FRONT BOUNDARY)
SCALE - 1 : 100