



YELLOWSTONE STREET

Performance Solution documented as per A2.2 BCA2019 amendment 1, ib 102 Performance solution for housing projects, ABCB Performance Solution Process and ABCB Assessment Methods

Relevant Performance Requirements identified

P2.3.1 Spread of fire

- (a) A Class 1 building must be protected from the spread of fire from-
- (ii) the allotment boundary

Assessment Method: Comparison with DTS provisions

SA 3.7.2.5(c) A carport or verandah may have timber posts and beams regardless of the distance from the boundary

SA 3.7.2.6(a) A carport or verandah is exempt from 3.7.2.5(a) if it has (A) 2 or more sides open and not less than 1/3 of its perimeter open

For the SA variations to be DTS they must meet all the relevant performance requirements including P2.3.1

As the performance solution is equal to the DTS provisions it satisfies the NCC Performance Requirements and will not increase the spread of fire from the allotment boundary

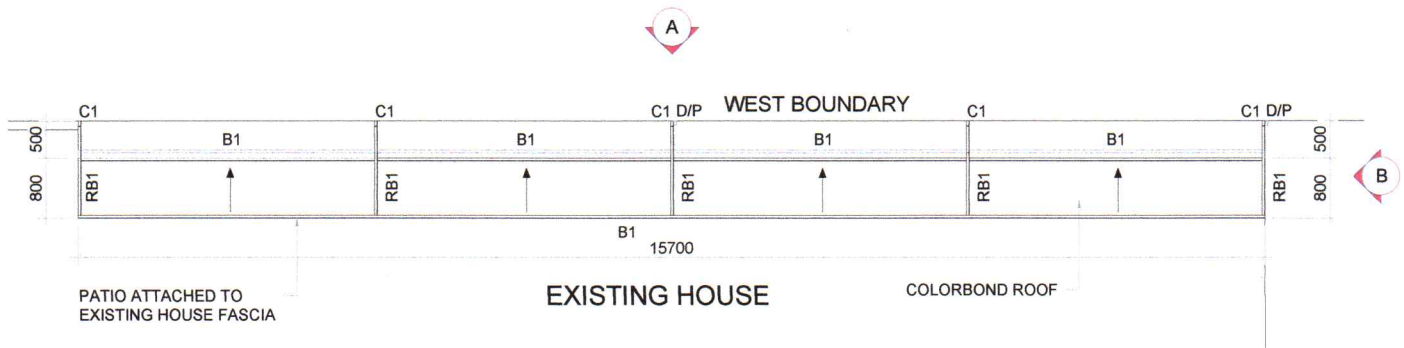


SITE PLAN

CORE Building Surveyors
Approvals Made Easy

A01 - Site Plan

PROJECT NAME: PATIO ADDITION	JOB NO: 160
PROJECT TITLE:	DRAWN BY : JK
	SCALE: AS SHOWN



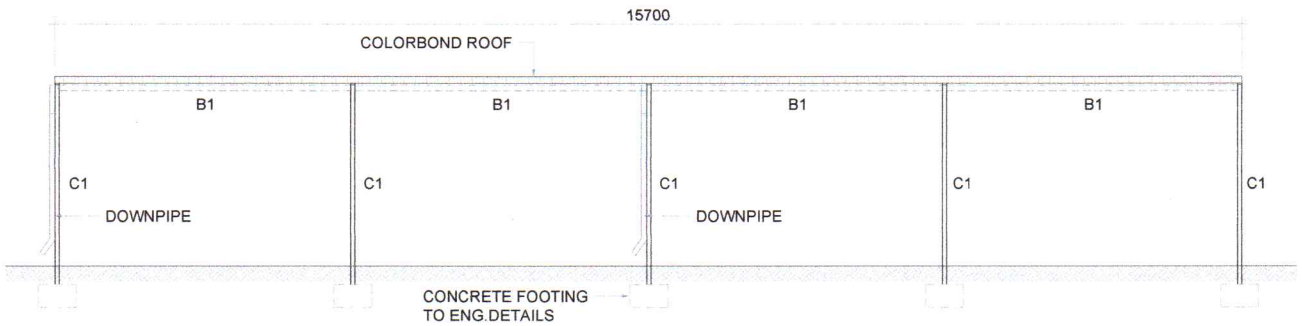
PATIO ATTACHED TO EXISTING HOUSE FASCIA

EXISTING HOUSE

COLORBOND ROOF

PROPOSED PATIO PLAN

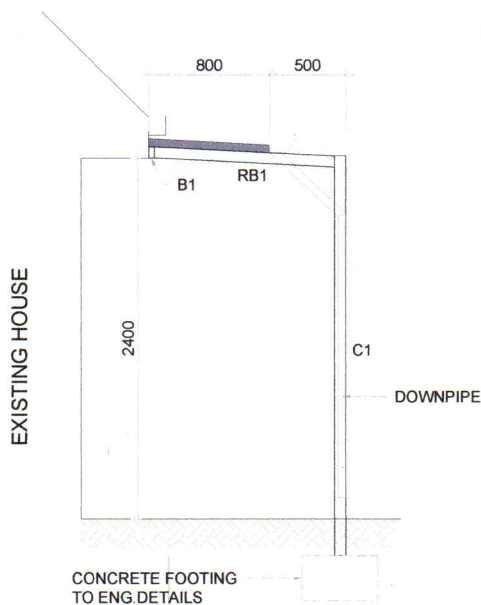
SCALE 1:100



ELEVATION - A

SCALE 1:100

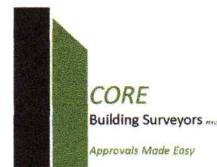
Note: Patio to be built at 10° Pitch.



ELEVATION - B

SCALE 1:50

SCHEDULE OF STRUCTURAL FRAMING	
BEAM/ COLUMN TAG NO	SIZE
C1	RHS 76X38mm
B1	TO ENG. DETAIL
RB1	TO ENG. DETAIL



A02 - Elevations

PROJECT NAME: PATIO ADDITION	JOB NO: 160
PROJECT TITLE:	DRAWN BY : JK
	SCALE: AS SHOWN