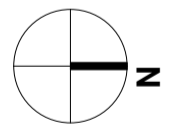


LANDSCAPE PLAN DRAWING INDEX

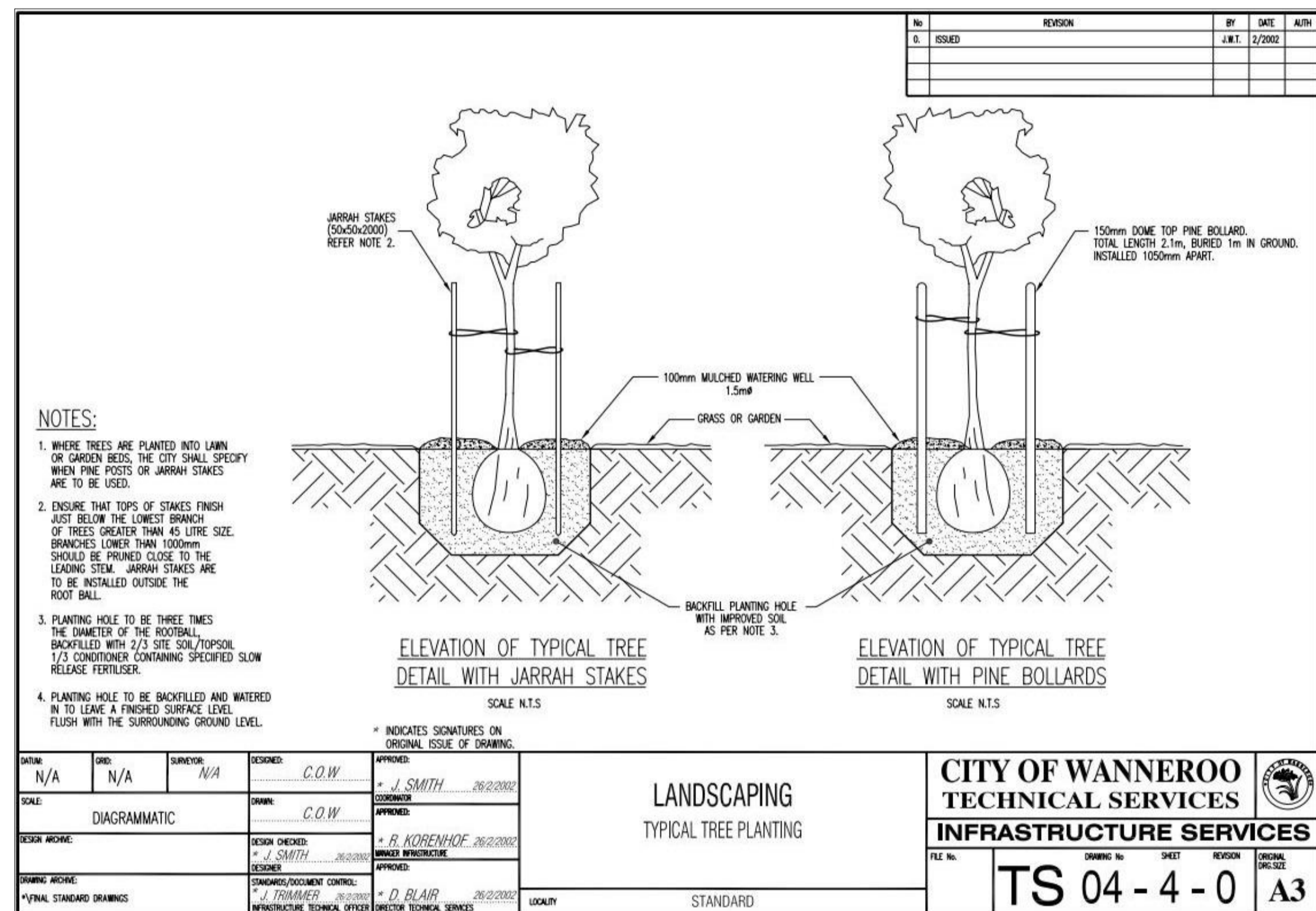
DRAWING NO.  
21168\_01  
21168\_02  
21168\_03

TITLE  
LANDSCAPE PLAN  
PLANT SCHEDULE AND SPECIFICATIONS  
TYPICAL DRAWINGS



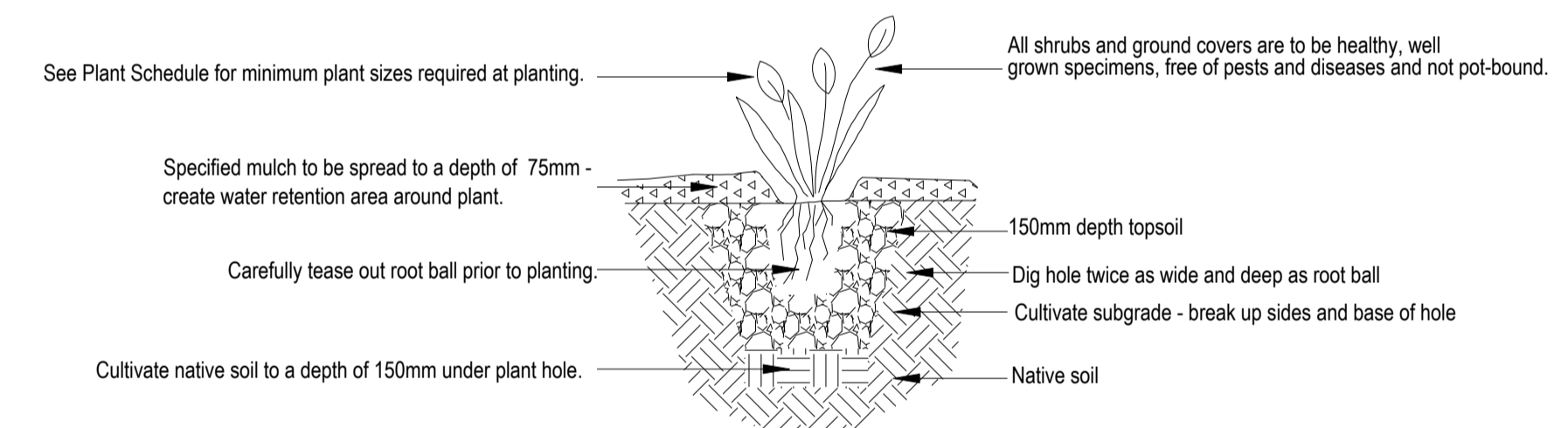
F	DEVELOPMENT APPLICATION	AC	AC	30.03.2022
E	DEVELOPMENT APPLICATION	AC	AC	12.01.2022
D	DEVELOPMENT APPLICATION	AC	AC	30.12.2021
C	DEVELOPMENT APPLICATION	AC	AC	7.12.2021
B	DEVELOPMENT APPLICATION	AC	AC	3.12.2021
A	DEVELOPMENT APPLICATION - PRELIMINARY ISSUE	AC	AC	11.10.2021
revision/issue	description	drawn	checked	date
project	PROPOSED CENTRE ZONE DEVELOPMENT	drawn	description	
location	LOTS 154 & 155 CNR ALEXANDER DRIVE AND LANDSDALE ROAD, EAST LANDSDALE	checked	LANDSCAPE PLAN	
<b>URBAN RETREAT GARDEN DESIGN</b>		scale	date	11.10.2021
COMMERCIAL AND RESIDENTIAL LANDSCAPE DESIGN SERVICES		project no	21168	dwg no
www.urbanretreatgardens.com.au E: amelia@urbanretreatgardens.com.au M: 0438 926 313		rev	01	5





1 TREE PLANTING DETAIL  
21168\_3 Typical Section

Not to scale



2 SHRUB PLANTING DETAIL  
21168\_3 Typical Section

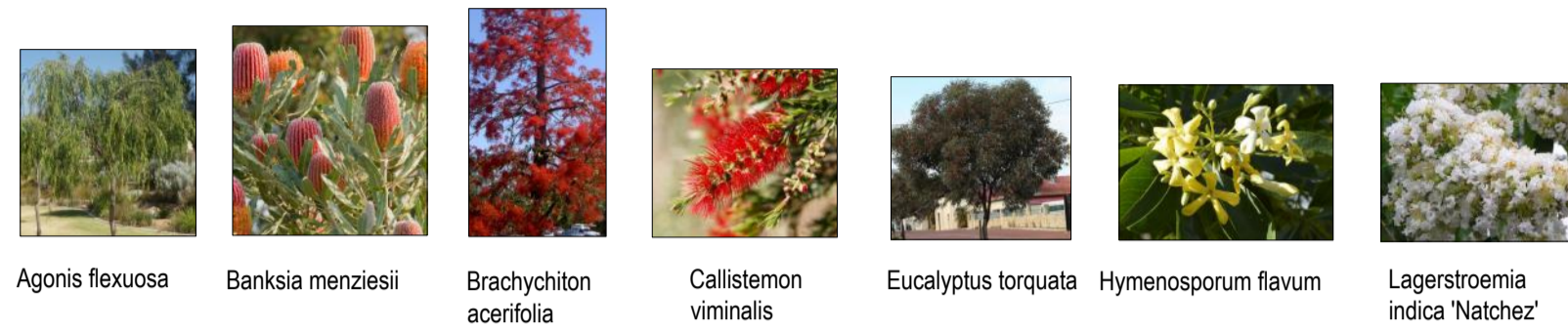
Not to scale

A	DEVELOPMENT APPLICATION	AC	AC	3.12.2021
revision/issue	description	drawn	checked	date
project	PROPOSED CENTRE ZONE DEVELOPMENT	drawn	description	
location	LOTS 154 & 155 CNR ALEXANDER DRIVE AND LANDSDALE ROAD, EAST LANDSDALE	checked	TYPICAL DRAWINGS	
scale	A1	scale	date	3.12.2021
project no	21168	project no	dwg no	03
LANDSCAPE DESIGN SERVICES	www.urbanretreatgardens.com.au E: amelia@urbanretreatgardens.com.au M: 0438 926 313	rev	1	



PLANT SCHEDULE					
SYMBOL	CODE	BOTANIC NAME	MATURE HEIGHT X WIDTH	MINIMUM INSTALLATION SIZE	NUMBER
<b>TREES</b>					
	Af	Agonis flexuosa	8m x 6m	75 Litre	5
	Bm	Banksia menziesii	7m x 3m	75 Litre	9
	Ba	Brachychiton acerifolius	10m x 6m	75 Litre	15
	Cv	Callistemon viminalis 'Prolific Weeping Bottlebrush'	6m x 4m	75 Litre	2
	Et	Eucalyptus torquata	8m x 6m	75 Litre	10
	Hf	Hymenosporum flavum	8m x 5m	75 Litre	5
	Li	Lagerstroemia indica 'Natchez'	7m x 5m	75 Litre	8
	MI	Melaleuca linariifolia	8m x 6m	75 Litre	6
	Mv	Melaleuca viridiflora	8m x 4m	75 Litre	16
	SaP	Syzygium australe 'Pinnacle'	10m x 1.5m	30 Litre	23
<b>SHRUBS</b>					
	Bs	Banksia spinulosa 'Coastal Cushion'	80cm x 50cm	13cm	23
	LI	Leptospermum laevigatum 'Shore Tuff'	50cm x 1.2m	14cm	16
	Sc	Scaevola crassifolia prostrate	50cm x 2m	13cm	17
	Ts	Thyrtomene saxicola 'Pink Lace'	50cm x 1m	13cm	29
	Vc	Verticordia chrysanthella	50cm x 1m	13cm	41
<b>GRASSES</b>					
	Cc	Conostylis candicans	30cm x 50cm	14cm	103
	Lc	Lomandra confertifolia 'Wingara'	30cm x 30cm	14cm	109
<b>GROUND COVER</b>					
	As	Acacia spathulifolia	40cm x 1.5m	13cm	81
	Ac	Adenanthos cuneatus 'Coral Carpet'	30cm x 1.5m	13cm	35
	AcB	Aptenia cordifolia	10cm x 1.5m	13cm	46
	Bb	Banksia blechnifolia	30cm x 2m	13cm	19
	Cg	Casuarina glauca 'Cousin It'	10cm x 1m	13cm	84
	Eg	Eremophila glabra 'Kalbarri Carpet'	20cm x 2m	13cm	118
	Ga	Grevillea alpina x rosmarinifolia 'Firecracker'	40cm x 80cm	13cm	144
	Gc	Grevillea crithmifolia 'Green Carpet'	20cm x 2m	13cm	37
	Go	Grevillea obtusifolia 'Gin Gin Gem'	25cm x 3m	13cm	64
	Hp	Hemiandra pungens alba	30cm x 1.5m	13cm	81
	Kp	Kennedia prostrata	10cm x 3m	13cm	160
	Mh	Melaleuca huegelii prostrate	20cm x 2m	13cm	70
	Mp	Myoporum parvifolium	10cm x 1m	13cm	144
	Oa	Olearia axillaris 'Beach Ball'	40cm x 80cm	13cm	72
	Sa	Scaevola albida 'Super Cluster'	10cm x 2m	13cm	80
<b>TURF</b>					
	Village Green Kikuyu		Roll on		Site measure
<b>TOTAL PLANTS</b>					<b>1672</b>

**TREE VARIETIES**



Agonis flexuosa Banksia menziesii Brachychiton acerifolia Callistemon viminalis Eucalyptus torquata Hymenosporum flavum Lagerstroemia indica 'Natchez'



Melaleuca linariifolia Melaleuca viridiflora Syzygium australe 'Pinnacle'

**NOTES**  
 1. TREE PLACEMENT: TREES SPACED IN ACCORDANCE WITH BUSHFIRE MANAGEMENT PLAN.  
 2. TREE AVAILABILITY: SHOULD BANKSIA MENZIESII BE UNAVAILABLE IN ADVANCED POT SIZE AT TIME OF PLANTING, A TREE FROM THE CITY'S SPECIES LIST AS OUTLINED IN '7.1 SOLID WALL REQUIREMENT SPECIAL PROVISIONS' MAY BE SUBSTITUTED.

**SHRUB VARIETIES**



Banksia spinulosa 'Coastal Cushion' Leptospermum laevigatum 'Shore Tuff' Scaevola crassifolia prostrate Thyrtomene saxicola 'Pink Lace' Verticordia chrysanthella

**GRASS VARIETIES**



Conostylis candicans Lomandra confertifolia 'Wingara'

**GROUND COVER VARIETIES**



Acacia spathulifolia Adenanthos cuneatus 'Coral Carpet' Aptenia cordifolia Banksia blechnifolia Casuarina glauca 'Cousin It' Eremophila glabra 'Kalbarri Carpet'



Grevillea alpina x rosmarinifolia 'Firecracker' Grevillea crithmifolia 'Green Carpet' Grevillea obtusifolia 'Gin Gin Gem' Hemiandra pungens alba Kennedia prostrata Melaleuca huegelii prostrate



Myoporum parvifolium Olearia axillaris 'Beach Ball' Scaevola albida 'Super Cluster'

**PLANTING SPECIFICATIONS**

1. SPECIFIED PLANT SPECIES HAVE BEEN SOURCED FROM BENARA NURSERY, DOMUS NURSERY, ELLENBY TREE FARM AND APACE WA STOCK LISTS. SPECIES AND POT SIZES INDICATED ARE SUBJECT TO AVAILABILITY AT TIME OF PLANTING.

2. ALL PLANTING AREAS ARE TO BE PREPARED AND PLANTED IN ACCORDANCE WITH INDUSTRY BEST PRACTICE AND THE INSTRUCTIONS BELOW.

**A. PREPARATION OF SOIL IN GARDEN BED AREAS:**  
 I. REMOVE ALL TRACES OF BUILDERS' MATERIAL FROM PLANTING AREAS INCLUDING RUBBLE, SAND, MORTAR AND ALL OTHER EXTRANEIOUS MATERIAL.  
 II. REMOVE ALL WEEDS IN GARDEN BED AREAS BY SPRAYING WEEDS WITH A STANDARD INDUSTRY HERBICIDE FOLLOWING MANUFACTURER'S SPECIFICATIONS AND LEAVE FOR RECOMMENDED TIME.  
 III. REMOVE DEAD PLANT MATTER AFTER TIME SPECIFIED ON HERBICIDE PRODUCT.  
 IV. UNDERTAKE SOIL IMPROVEMENT SUITABLE FOR NATIVE PLANTS.

**B. PLANTING**  
 I. PLANT TREES IN ACCORDANCE WITH STANDARD DRAWING 'TYPICAL TREE PLANTING' IN THIS PLAN SET. INSTALL ROOT BARRIERS TO ALL TREES IN CARPARK AREAS. CLEAR LOWER TREE BRANCHES SO 75% OF TRUNK IS CLEAR.  
 II. PLANT SHRUBS, GRASSES AND GROUND COVERS IN ACCORDANCE WITH 'SHRUB PLANTING DETAIL' IN THIS PLAN SET AND WATER IN THOROUGHLY.

**C. MULCH**  
 I. AFTER PLANTING, APPLY CHUNKY (25-50MM) PINE BARK WOOD CHIPS TO A MINIMUM DEPTH OF 75MM (MAXIMUM 100MM) TO ALL PLANTING BEDS, KEEPING MULCH CLEAR OF PLANT STEMS.  
 II. APPLY A MINIMUM MULCH SPREAD OF 1.5MØ UNDER TREES IN TURF AREAS LEAVING 10-20MM GAP BETWEEN MULCH AND TREE TRUNKS.  
 III. TIDY AND GRADE MULCH AFTER APPLICATION.

**D. TURF**  
 I. TURF TO BE AS PER INDUSTRY STANDARD AND TO SUPPLIER INSTALLATION SPECIFICATIONS.  
 II. SOIL TO BE CULTIVATED TO A MINIMUM DEPTH OF 150MM PRIOR TO TURF INSTALLATION WITH ROTARY HOE. SUPPLY AND SPREAD TO THE FULL EXTENT OF AREA PELLETIZED ORGANIC FERTILISER EQUAL OR EQUIVALENT TO 'DYNAMIC LIFTER' AT THE RATE SPECIFIED ON PRODUCT PER SQUARE METER. WATER FERTILISER IN WELL.  
 III. FINISHED SOIL LEVEL TO BE 10MM-20MM BELOW PATHS AND KERBS TO ALLOW FOR TURF THICKNESS.  
 IV. LAY TURF ON MOIST SOIL WITH STAGGERED JOINS AND NO GAPS. TURF SHOULD BE WATERED IN WITH HEAVY SOAKING WITHIN 30MINS OF LAYING. TURF SECTIONS TO BE ROLLED IN WITH LAWN ROLLER. TURF SHOULD NOT BE ALLOWED TO DRY OUT PRIOR TO ROLLING IN AND EACH SECTION MUST BE WATERED IN THOROUGHLY IMMEDIATELY AFTER ROLLING IN.  
 V. TURF NOT TO BE INSTALLED WITHIN 770MM (MINIMUM) OF TRUNKS OF TREES TO ALLOW FOR MULCH SPREAD. ALL INTERSECTING EDGES TO BE PRECISELY CUT AND TIDY. ENSURE UNLAI D TURF DOES NOT DRY OUT DURING INSTALLATION.

**IRRIGATION SPECIFICATIONS**

1. ALL GARDEN BEDS TO BE IRRIGATED. WATER SUPPLY IS SCHEME WATER.  
 2. IRRIGATION PLAN BY OTHERS.

**LANDSCAPE MAINTENANCE SPECIFICATIONS**

IN ACCORDANCE WITH THE BUSHFIRE MANAGEMENT POLICY FOR THIS PROPERTY AND ITS ASSOCIATED AREAS, FUTURE LANDSCAPE MAINTENANCE SHOULD ENSURE THE FOLLOWING STANDARDS ARE MET WITHIN THE MARKED ASSET PROTECTION ZONE:

1. TREES (PLANTS > 5 METERS IN HEIGHT)  
 AT MATURITY, LOWER BRANCHES SHOULD BE REMOVED TO A HEIGHT OF 2 METRES ABOVE GROUND OR SURFACE VEGETATION.

2. SHRUBS (PLANTS 0.5 TO 5M IN HEIGHT)  
 CLUMPS MUST BE KEPT AT 5M2 OR LESS. CLUMPS TO REMAIN SEPERATED FROM EACH OTHER AND ANY EXPOSED WINDOW OR DOOR BY 10M.

3. GROUND COVER PLANTS (PLANTS < 0.5M IN HEIGHT)  
 TO BE MAINTAINED TO REMOVE DEAD PLANT MATERIAL AND ANY PARTS WITHIN 2 METRES OF A STRUCTURE.

4. FINE FUEL  
 COMBUSTIBLE DEAD VEGETATION SHALL BE MATTER LESS THAN 6MM IN THICKNESS SHOULD BE MAINTAINED AT AN AVERAGE OF TWO TONNES PER HECTARE.



E	DEVELOPMENT APPLICATION	AC	AC	30.03.2022	
D	DEVELOPMENT APPLICATION	AC	AC	30.12.2021	
C	DEVELOPMENT APPLICATION	AC	AC	7.12.2021	
B	DEVELOPMENT APPLICATION	AC	AC	3.12.2021	
A	DEVELOPMENT APPLICATION - PRELIMINARY	AC	AC	11.10.2021	
revision/issue		description	drawn	checked	date
project		drawn		description	
location		checked		description	
PROPOSED CENTRE ZONE DEVELOPMENT		AC		PLANT SCHEDULE	
LOTS 154 & 155 CNR ALEXANDER DRIVE AND		AC		AND SPECIFICATIONS	
LANDSDALE ROAD, EAST LANDSDALE		AC			
<b>URBAN RETREAT GARDEN DESIGN</b>		scale		date 11.10.2021	
COMMERCIAL AND RESIDENTIAL LANDSCAPE DESIGN SERVICES		A1		project no 21168	
www.urbanretreatgardens.com.au				dwg no 02	
E:amelia@urbanretreatgardens.com.au				rev 4	
M:0438 926 313					