

NOTE:
PLANS ARE SUBJECT TO CHANGE

Scale 1:200
0 2 4 6 8m

ISSUED FOR PLANNING AMENDMENT



Project: **LANDSDALE MEDICAL**
New residence on:
**Lot 2 (#42)
POLLINO GARDENS
LANDSDALE**

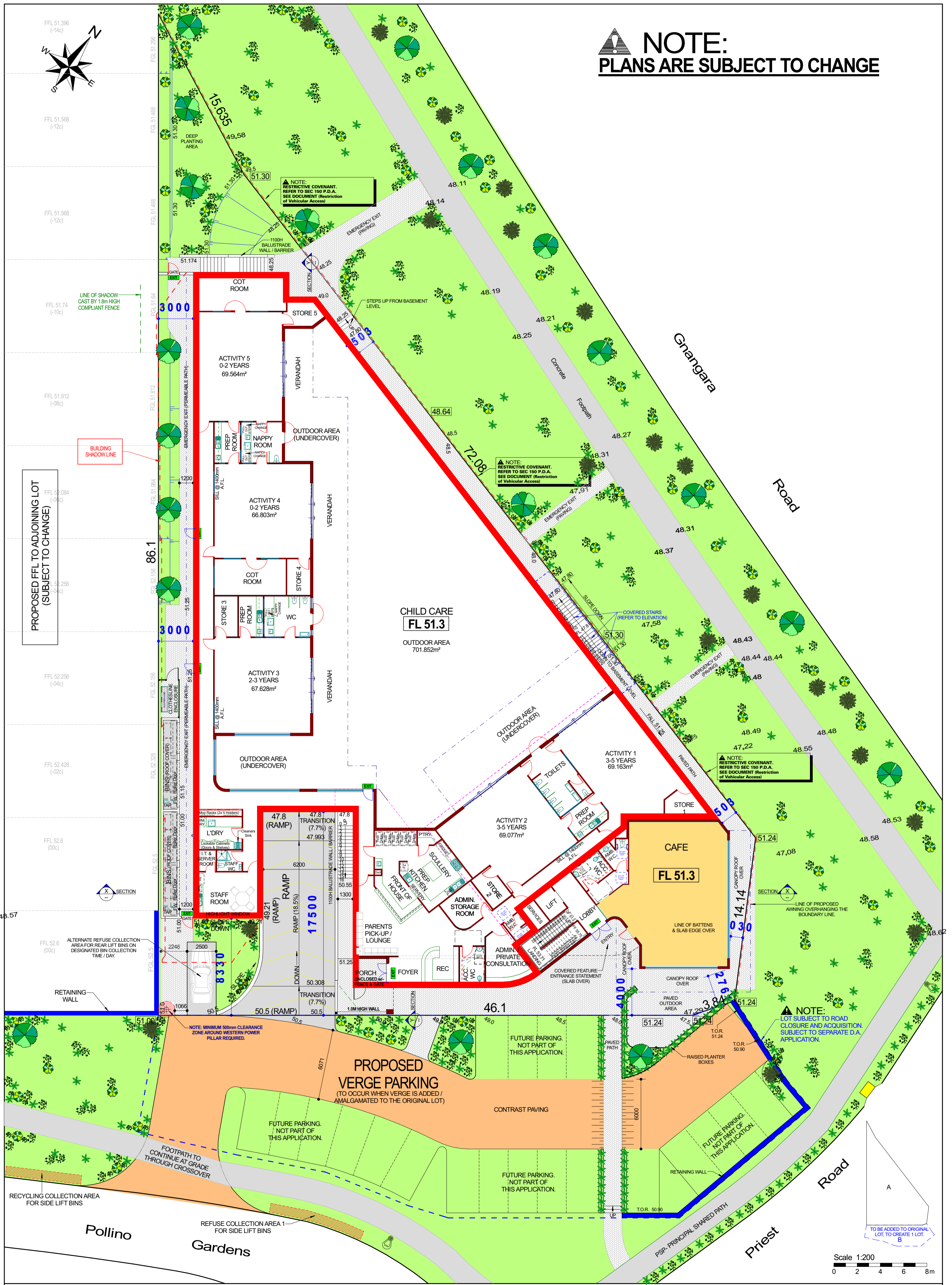
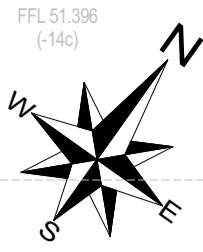
| VARIATIONS / ISSUE | | | |
|--------------------|--|-----|------|
| No | Description | Dwn | Date |
| 1 | REV 1 - FOR DISCUSSION & FEEDBACK | | |
| 2 | REV 2 - FOR DISCUSSION & FEEDBACK | | |
| 3 | REV 3 - APPROVED REVISIONS | | |
| 4 | ISSUE 1 - PRELIMINARY PLANS 17/12/2021 | | |
| 5 | AMENDED PLANNING 02/02/2022 | | |
| 6 | AMENDED PLANNING 10/03/2022 | | |

| VARIATIONS / ISSUE | | | |
|--------------------|-------------|-----|------|
| No | Description | Dwn | Date |
| | | | |
| | | | |
| | | | |
| | | | |
| | | | |

| VARIATIONS / ISSUE | | | |
|--------------------|-------------|-----|------|
| No | Description | Dwn | Date |
| | | | |
| | | | |
| | | | |
| | | | |
| | | | |

| BASEMENT | | |
|-----------|-----------------------------|------------|
| JOB No. | Scale | Sheet Size |
| 15039 | 1:200 | A2 |
| SHEET No. | Author | Rev. |
| 1 of 7 | Arasi Constructions Pty Ltd | 8 |

NOTE:
PLANS ARE SUBJECT TO CHANGE



Scale 1:200
0 2 4 6 8m

ISSUED FOR PLANNING AMENDMENT



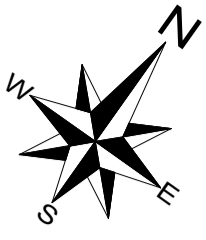
Project: **LANDSDALE MEDICAL**
New residence on:
**Lot 2 (#42)
POLLINO GARDENS
LANDSDALE**

| VARIATIONS / ISSUE | | | |
|--------------------|--|-----|------|
| No | Description | Dwn | Date |
| 1 | REV 1 - FOR DISCUSSION & FEEDBACK | | |
| 2 | REV 2 - FOR DISCUSSION & FEEDBACK | | |
| 3 | REV 3 - APPROVED REVISIONS | | |
| 4 | ISSUE 1 - PRELIMINARY PLANS 17/12/2021 | | |
| 5 | AMENDED PLANNING 02/02/2022 | | |
| 6 | AMENDED PLANNING 10/03/2022 | | |

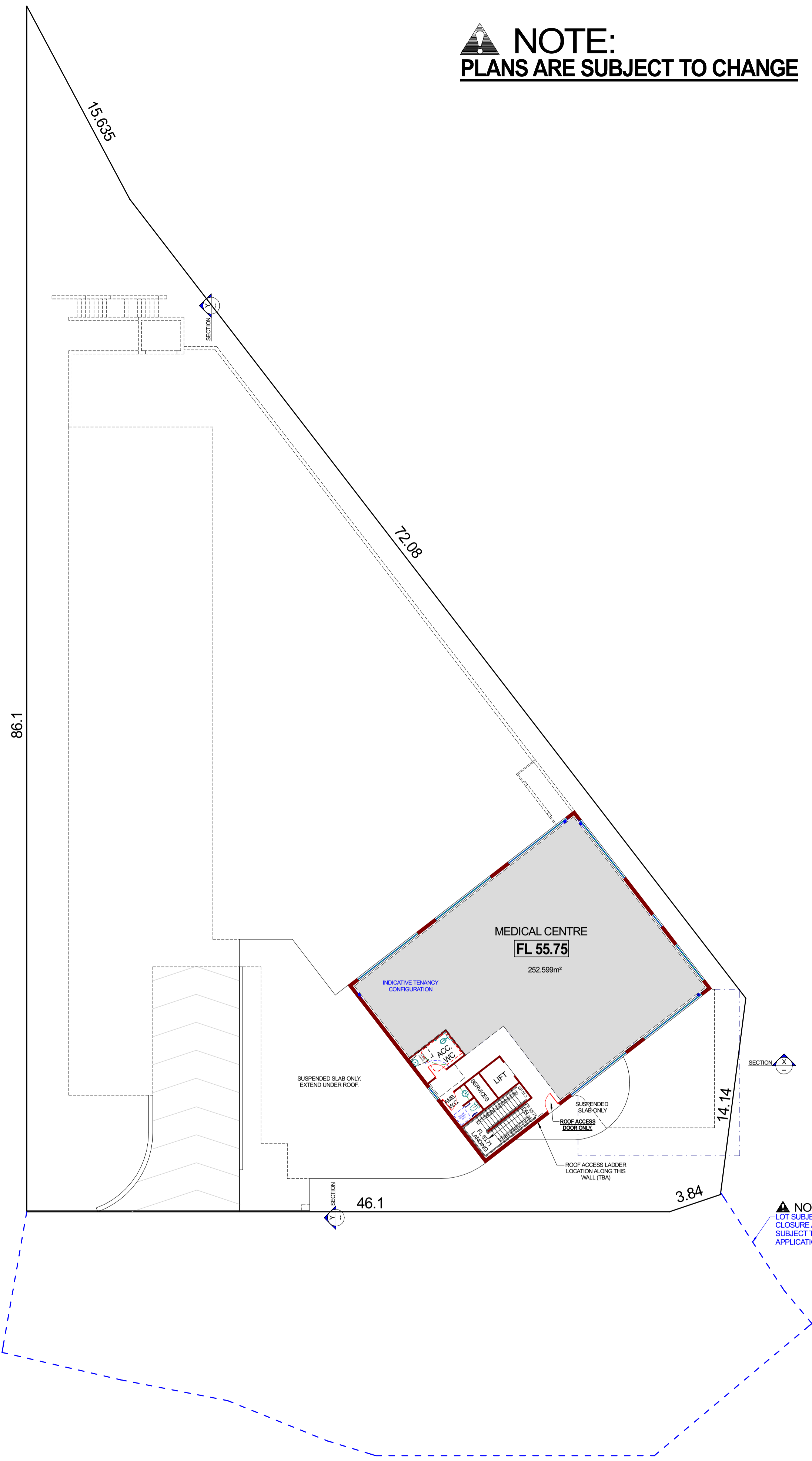
| VARIATIONS / ISSUE | | | |
|--------------------|-------------|-----|------|
| No | Description | Dwn | Date |
| | | | |
| | | | |
| | | | |

| VARIATIONS / ISSUE | | | |
|--------------------|-------------|-----|------|
| No | Description | Dwn | Date |
| | | | |
| | | | |
| | | | |

| GROUND FLOOR - CHILD CARE | | | |
|---------------------------|--------|-----------------------------|---------------|
| SCALE 1:200 | | | |
| JOB No. | 15039 | COMMERCIAL | SHEET SIZE A2 |
| SHEET No. | 2 of 7 | Arasi Constructions Pty Ltd | Rev. 8 |
| | | © COPYRIGHT | |



NOTE:
PLANS ARE SUBJECT TO CHANGE



NOTE:
LOT SUBJECT TO ROAD
CLOSURE AND ACQUISITION.
SUBJECT TO SEPARATE D.A.
APPLICATION.

DISCLAIMER:
THIS DRAWING IS SUBJECT TO LOCAL AUTHORITY APPROVAL & RELEVANT AUTHORITY APPROVAL.
BUILDING SETBACKS ARE SUBJECT TO LOCAL AUTHORITY APPROVAL.

Scale 1:200
0 2 4 6 8m

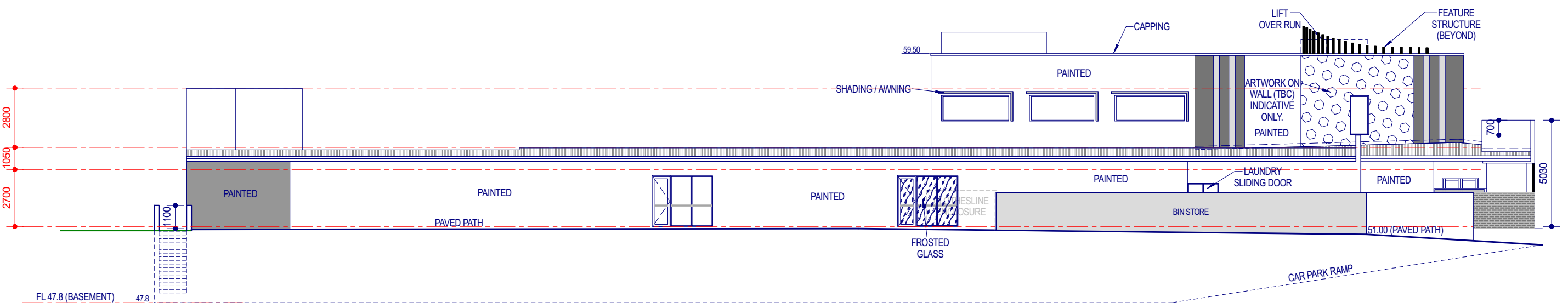
**ISSUED FOR
PLANNING
AMENDMENT**



Project:
LANDSDALE CHILDCARE
New residence on:
**Lot 2 (#42)
POLLINO GARDENS
LANDSDALE**

| VARIATIONS / ISSUE | | | | VARIATIONS / ISSUE | | | | VARIATIONS / ISSUE | | | |
|--------------------|--|-----|------|--------------------|-------------|-----|------|--------------------|-------------|-----|------|
| No | Description | Dwn | Date | No | Description | Dwn | Date | No | Description | Dwn | Date |
| 1 | REV 1 - FOR DISCUSSION & FEEDBACK | | | | | | | | | | |
| 2 | REV 2 - FOR DISCUSSION & FEEDBACK | | | | | | | | | | |
| 3 | REV 3 - APPROVED REVISIONS | | | | | | | | | | |
| 4 | ISSUE 1 - PRELIMINARY PLANS 17/12/2021 | | | | | | | | | | |
| 5 | AMENDED PLANNING 02/02/2022 | | | | | | | | | | |
| 6 | AMENDED PLANNING 10/03/2022 | | | | | | | | | | |

| | | |
|-------------------------------------|-----------------------------|------------|
| FIRST FLOOR - MEDICAL CENTRE | | |
| JOB No. | COMMERCIAL | SHEET SIZE |
| 15039 | Custom Specification | A2 |
| SHEET No. | Arasi Constructions Pty Ltd | Rev. |
| 3 of 7 | © COPYRIGHT | 8 |



South West ELEVATION

**ISSUED FOR
PLANNING
AMENDMENT**

SLAB THICKNESSES TO BE CONFIRMED (SUBJECT TO ENGINEERS DESIGN & DRAWINGS)



SUITE 6 / 19 OXLEIGH DRIVE,
MALAGA, W.A. 6062 Ph: 9249 3333
Fax: 9249 3304

New residence on:
**Lot 2 (#42)
POLLINO GARDENS
LANDSDALE**

VARIATIONS

| No | Description | Dwn | Date |
|----|-----------------------------------|-----|------|
| 1 | REV 1 - FOR DISCUSSION & FEEDBACK | | |
| 5 | AMENDED PLANNING 02/02/2022 | | |
| 6 | AMENDED PLANNING 10/03/2022 | | |
| | | | |
| | | | |
| | | | |
| | | | |
| | | | |
| | | | |