

# Clarkson mixed use development

Lot 2 68 Boranup Avenue Clarkson

DA SUBMISSION

18 AUGUST 2022





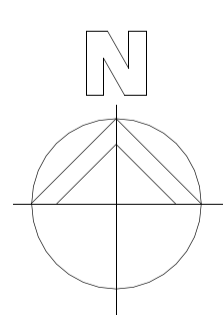
LANDSCAPING SITE PLAN

DA01

MIXED USE DEVELOPMENT  
LOT 2 68 BORANUP AVENUE CLARKSON  
REVISION PROJECT NO. 146.21 DATE

Hodge Collard Preston  
ARCHITECTS

**SUPERSEDED**  
INTERIM ISSUE ONLY



DRY LDRY LDRY DRY



INDICATIVE INTERNAL LOT LAYOUT

MIXED USE DEVELOPMENT  
LOT 2 68 BORANUP AVENUE CLARKSON  
REVISION PROJECT NO. 146.21 DATE



LOWER KEYS DRIVE

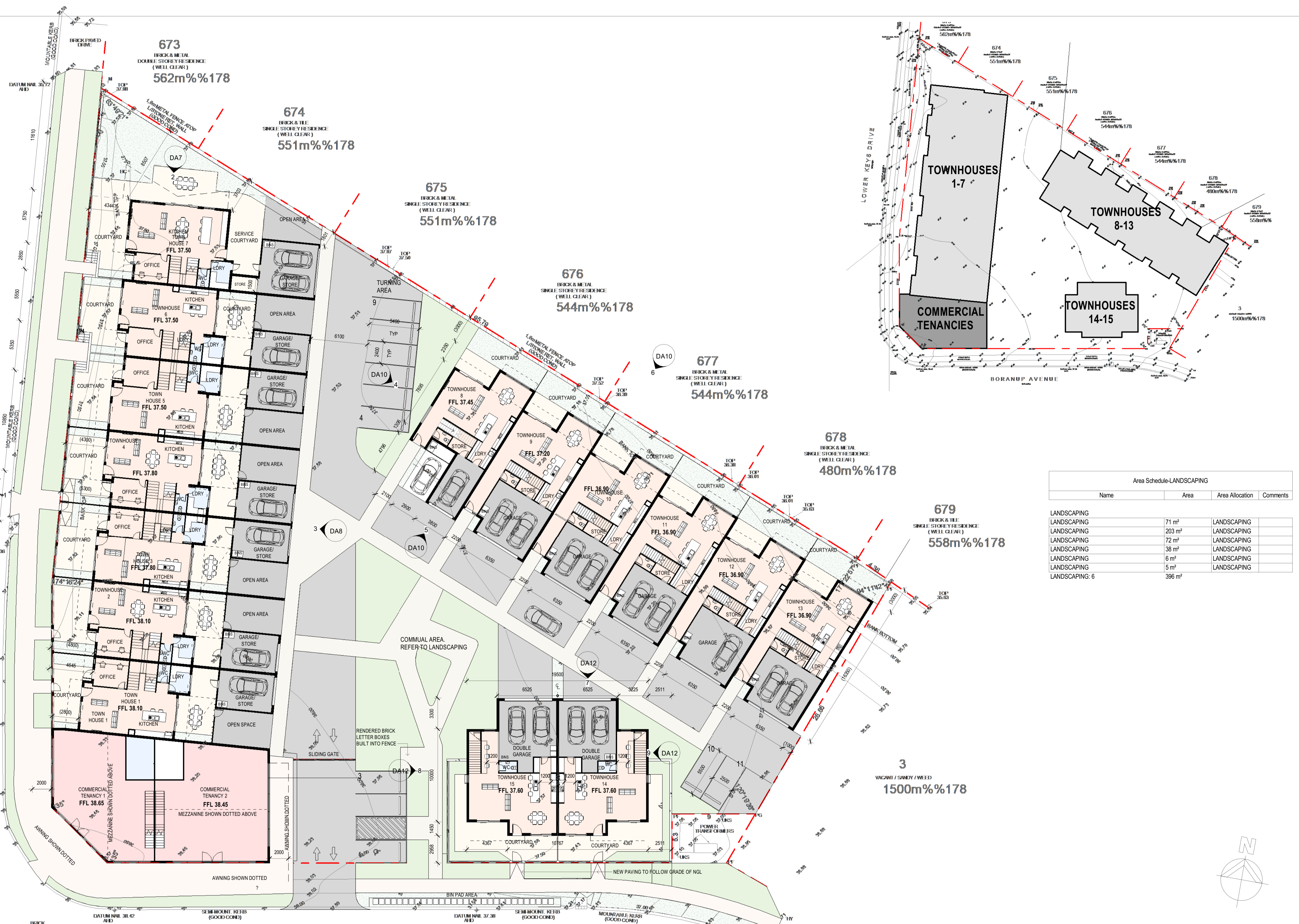
LOWER KEYS DRIVE

LOWER KEYS DRIVE

LOWER KEYS DRIVE

LOWER KEYS DRIVE

LOWER KEYS DRIVE



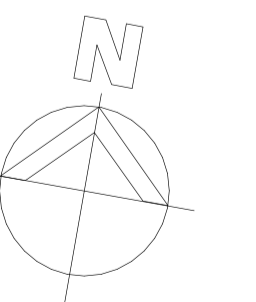
BORANUP AVENUE

SITE PLAN

DA2

MIXED USE DEVELOPMENT  
LOT 2 68 BORANUP AVENUE CLARKSON  
REVISION A PROJECT NO. 146.21 DATE 18.08.2022

Area Schedule-LANDSCAPING			
Name	Area	Area Allocation	Comments
LANDSCAPING	71 m <sup>2</sup>	LANDSCAPING	
LANDSCAPING	203 m <sup>2</sup>	LANDSCAPING	
LANDSCAPING	72 m <sup>2</sup>	LANDSCAPING	
LANDSCAPING	38 m <sup>2</sup>	LANDSCAPING	
LANDSCAPING	6 m <sup>2</sup>	LANDSCAPING	
LANDSCAPING	5 m <sup>2</sup>	LANDSCAPING	
LANDSCAPING: 6	396 m <sup>2</sup>	LANDSCAPING	



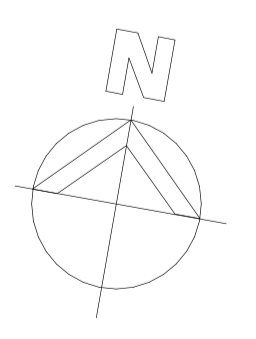
LOWER KEYS DRIVE  
BITUMEN



FIRST FLOOR LAYOUT

DA3

MIXED USE DEVELOPMENT  
LOT 2 68 BORANUP AVENUE CLARKSON  
REVISION A PROJECT NO. 146.21 DATE 18.08.2022



Area Schedule-TOWNHOUSE 1			
Name	Area	Area Allocation	Comments
TOWNHOUSE 1			
GROUND FLOOR TOWNHOUSE 1	86 m <sup>2</sup>	TOWNHOUSE 1	
OPENSOURCE TOWNHOUSE 1	27 m <sup>2</sup>	TOWNHOUSE 1	
OPENSOURCE TOWNHOUSE 1	24 m <sup>2</sup>	TOWNHOUSE 1	
GARAGE TOWNHOUSE 1	27 m <sup>2</sup>	TOWNHOUSE 1	
OPENSOURCE TOWNHOUSE 1	29 m <sup>2</sup>	TOWNHOUSE 1	
TOWNHOUSE 1 FIRST FLOOR	104 m <sup>2</sup>	TOWNHOUSE 1	
TOWNHOUSE 1: 6	295 m <sup>2</sup>		

Area Schedule-TOWNHOUSE 2			
Name	Area	Area Allocation	Comments
TOWNHOUSE 2			
GARAGE TOWNHOUSE 2	27 m <sup>2</sup>	TOWNHOUSE 2	
OPENSOURCE TOWNHOUSE 2	24 m <sup>2</sup>	TOWNHOUSE 2	
OPENSOURCE TOWNHOUSE 2	28 m <sup>2</sup>	TOWNHOUSE 2	
GROUND FLOOR TOWNHOUSE 2	86 m <sup>2</sup>	TOWNHOUSE 2	
OPENSOURCE TOWNHOUSE 2	35 m <sup>2</sup>	TOWNHOUSE 2	
FIRST FLOOR TOWNHOUSE 2	102 m <sup>2</sup>	TOWNHOUSE 2	
TOWNHOUSE 2: 6	303 m <sup>2</sup>		

Area Schedule-TOWNHOUSE 3			
Name	Area	Area Allocation	Comments
TOWNHOUSE 3			
OPENSOURCE TOWNHOUSE 3	24 m <sup>2</sup>	TOWNHOUSE 3	
GARAGE TOWNHOUSE 3	27 m <sup>2</sup>	TOWNHOUSE 3	
OPENSOURCE TOWNHOUSE 3	28 m <sup>2</sup>	TOWNHOUSE 3	
OPENSOURCE TOWNHOUSE 3	38 m <sup>2</sup>	TOWNHOUSE 3	
TOWNHOUSE 3	86 m <sup>2</sup>	TOWNHOUSE 3	
FIRST FLOOR TOWNHOUSE 3	102 m <sup>2</sup>	TOWNHOUSE 3	
TOWNHOUSE 3: 6	306 m <sup>2</sup>		

Area Schedule-TOWNHOUSE 4			
Name	Area	Area Allocation	Comments
TOWNHOUSE 4			
OPENSOURCE TOWNHOUSE 4	38 m <sup>2</sup>	TOWNHOUSE 4	
GARAGE TOWNHOUSE 4	27 m <sup>2</sup>	TOWNHOUSE 4	
TOWNHOUSE 4	86 m <sup>2</sup>	TOWNHOUSE 4	
OPENSOURCE TOWNHOUSE 4	28 m <sup>2</sup>	TOWNHOUSE 4	
OPENSOURCE TOWNHOUSE 4	24 m <sup>2</sup>	TOWNHOUSE 4	
FIRST FLOOR TOWNHOUSE 4	102 m <sup>2</sup>	TOWNHOUSE 4	
TOWNHOUSE 4: 6	306 m <sup>2</sup>		

Area Schedule-TOWNHOUSE 5			
Name	Area	Area Allocation	Comments
TOWNHOUSE 5			
OPENSOURCE TOWNHOUSE 5	38 m <sup>2</sup>	TOWNHOUSE 5	
GARAGE TOWNHOUSE 5	27 m <sup>2</sup>	TOWNHOUSE 5	
OPENSOURCE TOWNHOUSE 5	28 m <sup>2</sup>	TOWNHOUSE 5	
OPENSOURCE TOWNHOUSE 5	24 m <sup>2</sup>	TOWNHOUSE 5	
TOWNHOUSE 5	86 m <sup>2</sup>	TOWNHOUSE 5	
FIRST FLOOR TOWNHOUSE 5	102 m <sup>2</sup>	TOWNHOUSE 5	
TOWNHOUSE 5: 6	305 m <sup>2</sup>		

Area Schedule-TOWNHOUSE 6			
Name	Area	Area Allocation	Comments
TOWNHOUSE 6			
OPENSOURCE TOWNHOUSE 6	38 m <sup>2</sup>	TOWNHOUSE 6	
OPENSOURCE TOWNHOUSE 6	53 m <sup>2</sup>	TOWNHOUSE 6	
TOWNHOUSE 6	86 m <sup>2</sup>	TOWNHOUSE 6	
GARAGE TOWNHOUSE 6	27 m <sup>2</sup>	TOWNHOUSE 6	
FIRST FLOOR TOWNHOUSE 6	102 m <sup>2</sup>	TOWNHOUSE 6	
TOWNHOUSE 6: 5	306 m <sup>2</sup>		

Area Schedule-TOWNHOUSE 7			
Name	Area	Area Allocation	Comments
TOWNHOUSE 7			
GROUND FLOOR TOWNHOUSE 7	95 m <sup>2</sup>	TOWNHOUSE 7	
GARAGE TOWNHOUSE 7	38 m <sup>2</sup>	TOWNHOUSE 7	
OPENSOURCE TOWNHOUSE 7	223 m <sup>2</sup>	TOWNHOUSE 7	
FIRST FLOOR TOWNHOUSE 7	127 m <sup>2</sup>	TOWNHOUSE 7	
TOWNHOUSE 7	482 m <sup>2</sup>		

Area Schedule-TOWNHOUSE 8			
Name	Area	Area Allocation	Comments
TOWNHOUSE 8			
GROUND FLOOR TOWNHOUSE 8	104 m <sup>2</sup>	TOWNHOUSE 8	
OPENSOURCE TOWNHOUSE 8	36 m <sup>2</sup>	TOWNHOUSE 8	
CARPOR TOWNHOUSE 8	18 m <sup>2</sup>	TOWNHOUSE 8	
FIRST FLOOR TOWNHOUSE 8	99 m <sup>2</sup>	TOWNHOUSE 8	
TOWNHOUSE 8	257 m <sup>2</sup>		

Area Schedule-TOWNHOUSE 9			
Name	Area	Area Allocation	Comments
TOWNHOUSE 9			
OPENSOURCE TOWNHOUSE 9	35 m <sup>2</sup>	TOWNHOUSE 9	
GROUND FLOOR TOWNHOUSE 9	130 m <sup>2</sup>	TOWNHOUSE 9	
FIRST FLOOR TOWNHOUSE 9	97 m <sup>2</sup>	TOWNHOUSE 9	
TOWNHOUSE 9	262 m <sup>2</sup>		

Area Schedule-TOWNHOUSE 10			
Name	Area	Area Allocation	Comments
TOWNHOUSE 10			
GROUND FLOOR TOWNHOUSE 10	130 m <sup>2</sup>	TOWNHOUSE 10	
OPENSOURCE TOWNHOUSE 10	35 m <sup>2</sup>	TOWNHOUSE 10	
FIRST FLOOR TOWNHOUSE 10	97 m <sup>2</sup>	TOWNHOUSE 10	
TOWNHOUSE 10	263 m <sup>2</sup>		

Area Schedule-TOWNHOUSE 11			
Name	Area	Area Allocation	Comments
TOWNHOUSE 11			
GROUND FLOOR TOWNHOUSE 11	130 m <sup>2</sup>	TOWNHOUSE 11	
OPENSOURCE TOWNHOUSE 11	35 m <sup>2</sup>	TOWNHOUSE 11	
FIRST FLOOR TOWNHOUSE 11	99 m <sup>2</sup>	TOWNHOUSE 11	
TOWNHOUSE 11	263 m <sup>2</sup>		

Area Schedule-TOWNHOUSE 12			
Name	Area	Area Allocation	Comments
TOWNHOUSE 12			
GROUND FLOOR TOWNHOUSE 12	130 m <sup>2</sup>	TOWNHOUSE 12	
OPENSOURCE TOWNHOUSE 12	35 m <sup>2</sup>	TOWNHOUSE 12	
FIRST FLOOR TOWNHOUSE 12	98 m <sup>2</sup>	TOWNHOUSE 12	
TOWNHOUSE 12	262 m <sup>2</sup>		

Area Schedule-TOWNHOUSE 13			
Name	Area	Area Allocation	Comments
TOWNHOUSE 13			
GROUND FLOOR TOWNHOUSE 13	133 m <sup>2</sup>	TOWNHOUSE 13	
OPENSOURCE TOWNHOUSE 13	37 m <sup>2</sup>	TOWNHOUSE 13	
FIRST FLOOR TOWNHOUSE 13	99 m <sup>2</sup>	TOWNHOUSE 13	
TOWNHOUSE 13	269 m <sup>2</sup>		

Area Schedule-TOWNHOUSE 14			
Name	Area	Area Allocation	Comments
TOWNHOUSE 14			
GROUND FLOOR TOWNHOUSE 14	127 m <sup>2</sup>	TOWNHOUSE 14	
OPENSOURCE TOWNHOUSE 14	63 m <sup>2</sup>	TOWNHOUSE 14	
FIRST FLOOR TOWNHOUSE 14	115 m <sup>2</sup>	TOWNHOUSE 14	
TOWNHOUSE 14	305 m <sup>2</sup>		

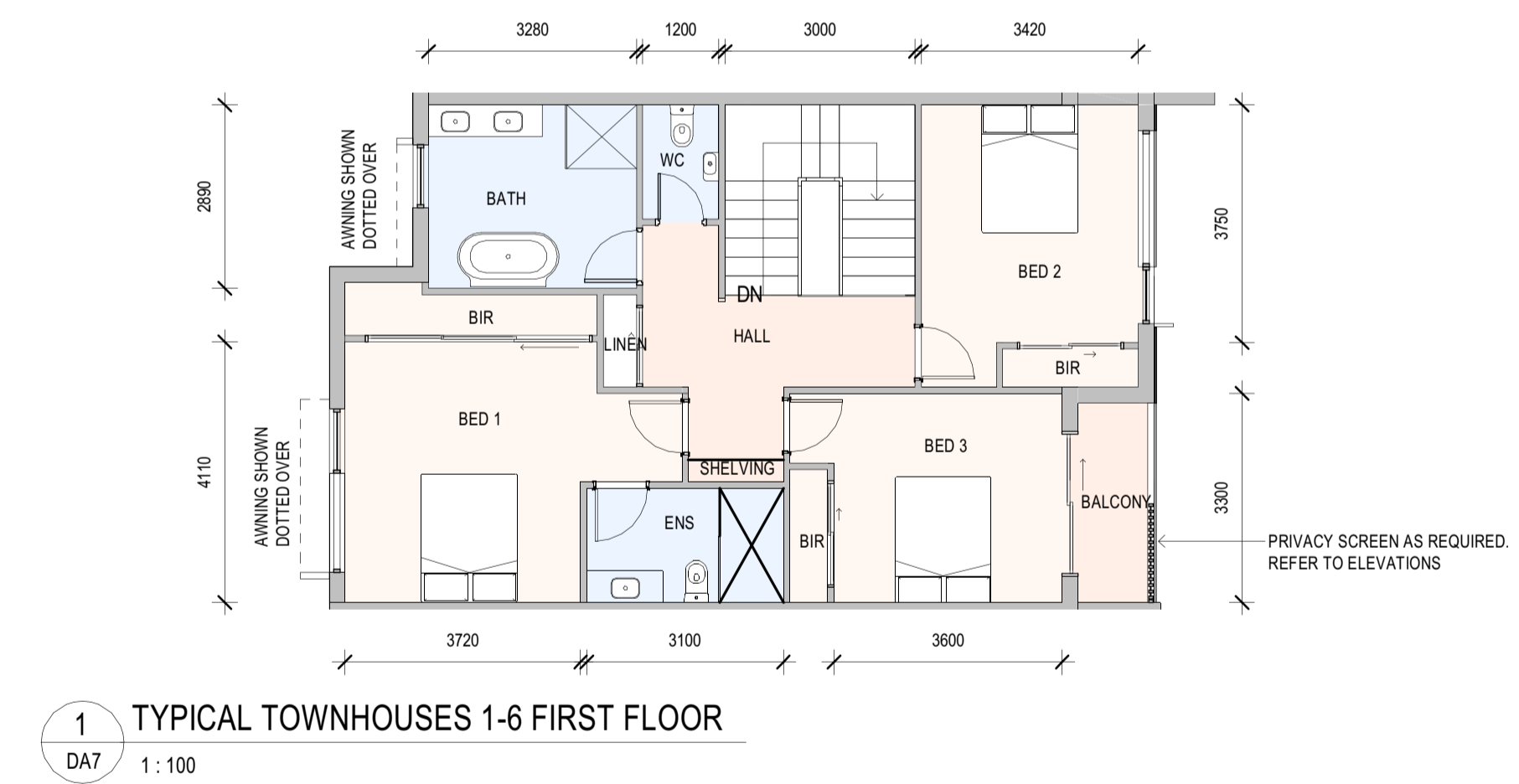
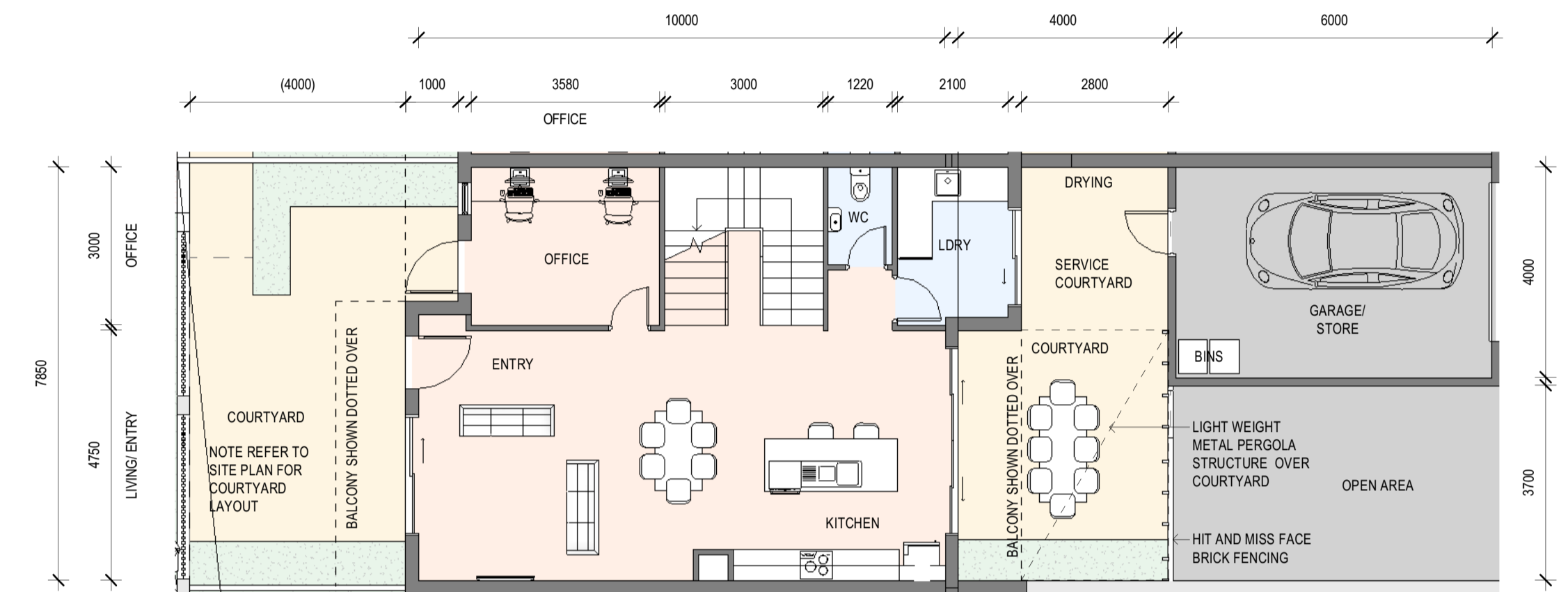
Area Schedule-TOWNHOUSE 15			
Name	Area	Area Allocation	Comments
TOWNHOUSE 15			
OPENSOURCE TOWNHOUSE 15	59 m <sup>2</sup>	TOWNHOUSE 15	
GROUND FLOOR TOWNHOUSE 15	127 m <sup>2</sup>	TOWNHOUSE 15	
FIRST FLOOR TOWNHOUSE 15	115 m <sup>2</sup>	TOWNHOUSE 15	
TOWNHOUSE 15	301 m <sup>2</sup>		

Area Schedule-COMMERCIAL TENANCY 1			
Name	Area	Area Allocation	Comments
COMMERCIAL TENANCY 1			
COMMERCIAL TENANCY 1	124 m <sup>2</sup>	COMMERCIAL TENANCY 1	
COMMERCIAL TENANCY 1 MEZZANINE	84 m <sup>2</sup>	COMMERCIAL TENANCY 1	
COMMERCIAL TENANCY 1: 2	209 m <sup>2</sup>		

Area Schedule-COMMERCIAL TENANCY 2			
Name	Area	Area Allocation	Comments
COMMERCIAL TENANCY 2			
COMMERCIAL TENANCY 2	146 m <sup>2</sup>	COMMERCIAL TENANCY 2	
COMMERCIAL TENANCY 2 MEZZANINE	81 m <sup>2</sup>	COMMERCIAL TENANCY 2	
COMMERCIAL TENANCY 2: 2	226 m <sup>2</sup>		

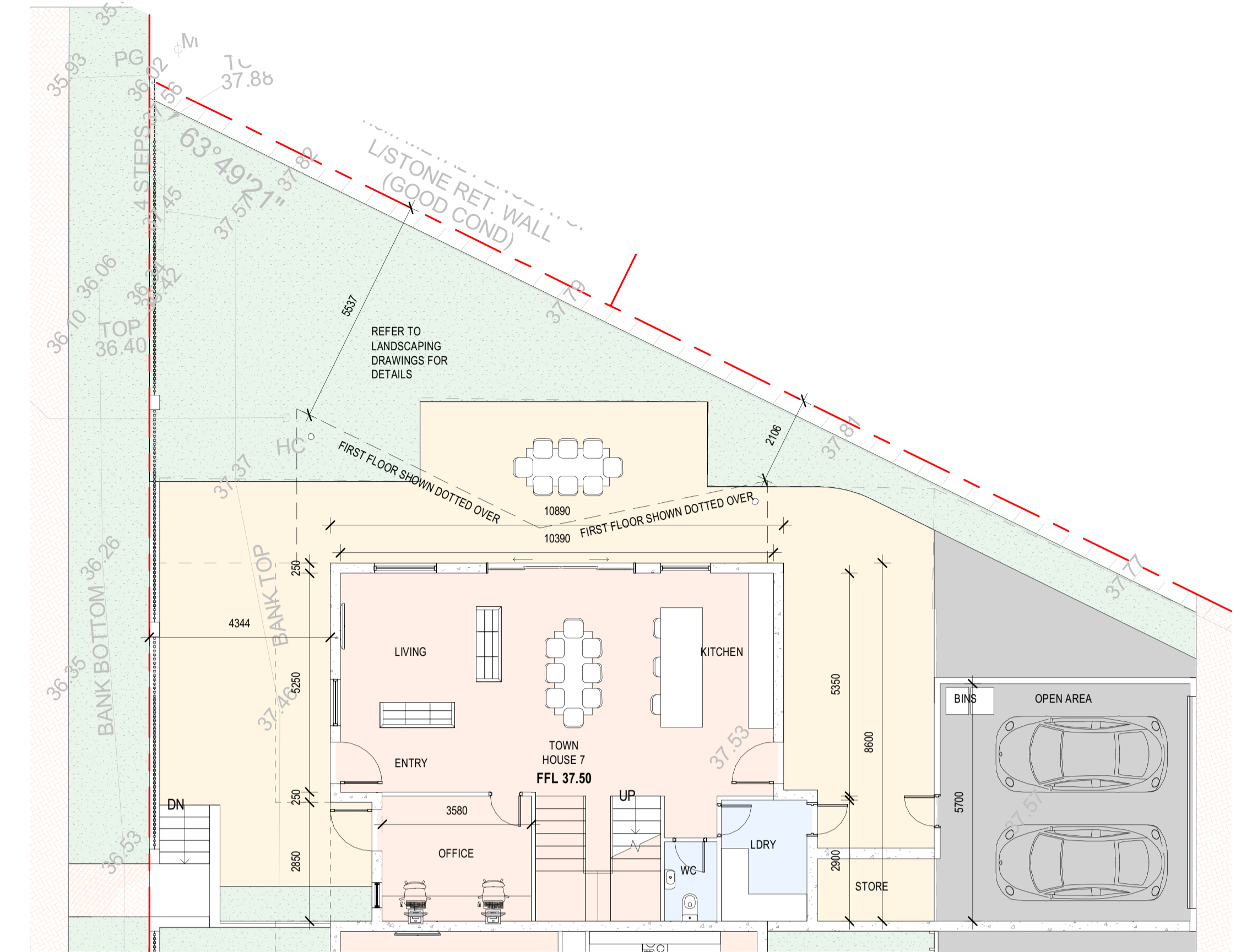


PERSPECTIVE OF TOWNHOUSES 1-6

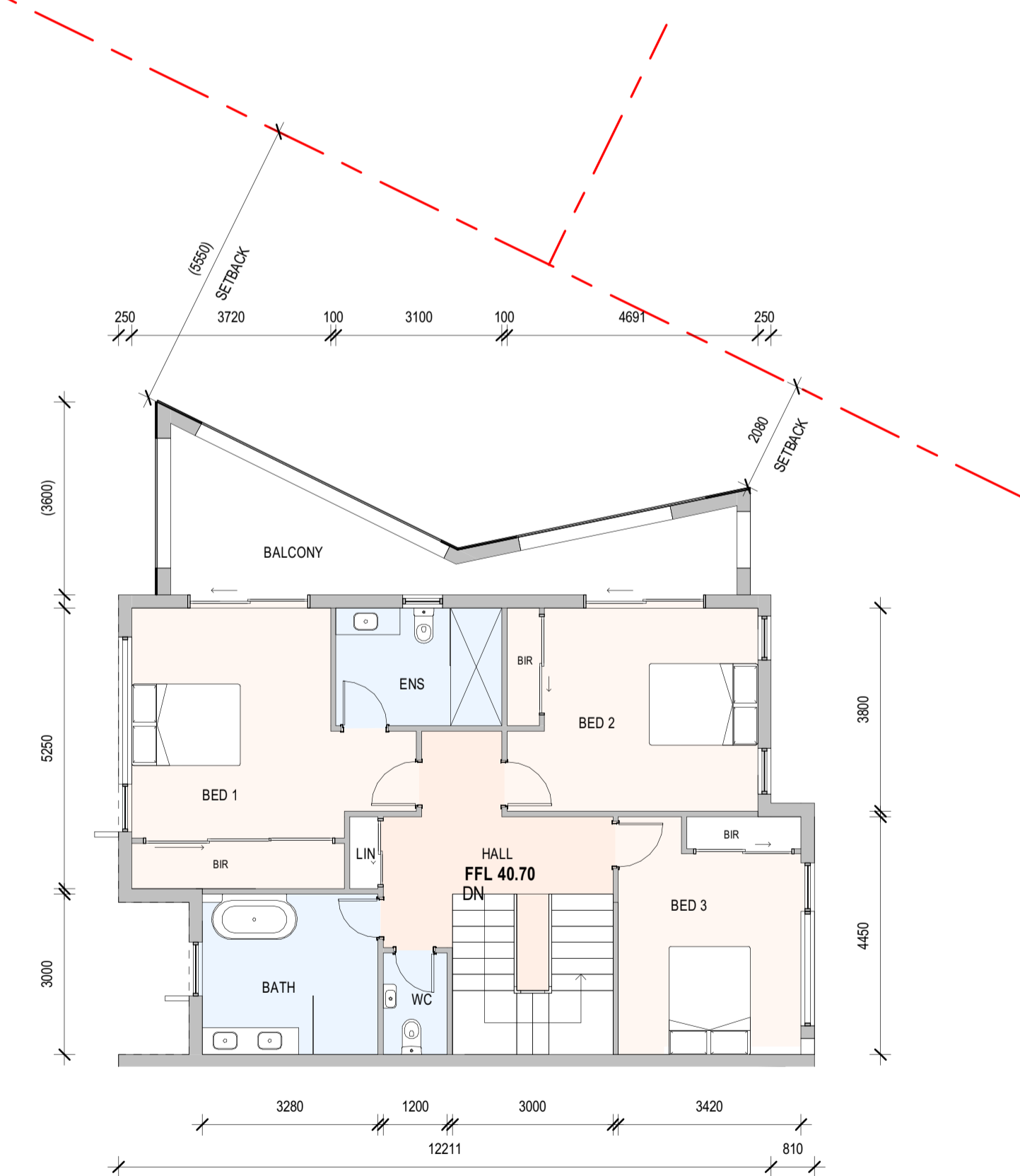




PERSPECTIVE OF TOWNHOUSE 7 FROM LOWER KEYS DRIVE



1 TOWNHOUSE 7 GROUND FLOOR  
DA7 1:100



2 TOWN HOUSE 7 LEVEL 1  
DA7 1:100





1 ELEVATION  
DA2 1:100



WIDE PAN METAL CLADDING



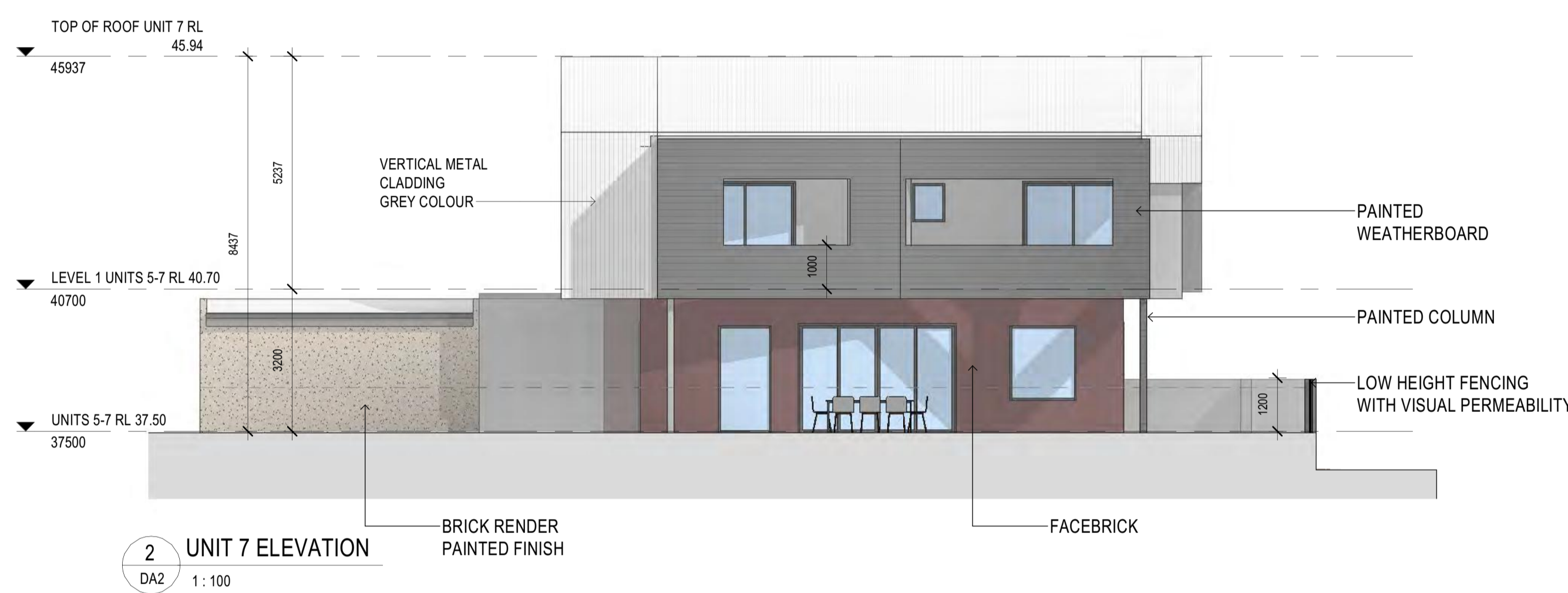
PAINTED RENDER



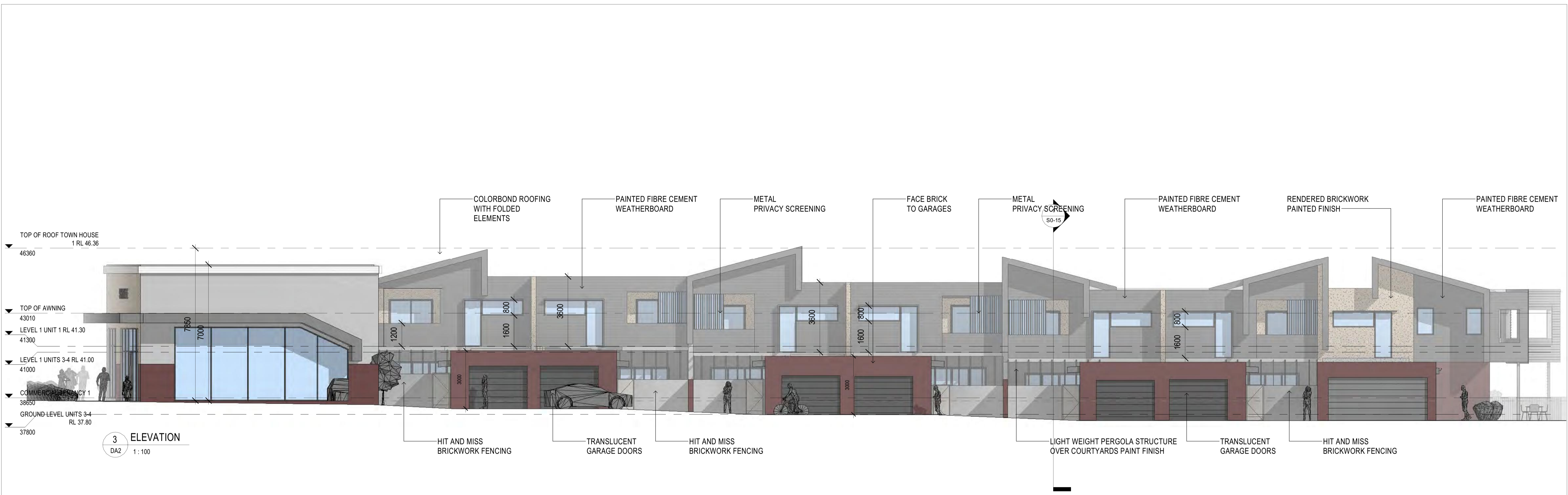
FACE BRICK



FIBRE CEMENT WEATHERBOARD



2 UNIT 7 ELEVATION  
DA2 1:100



**FOLDING ROOF FORM**



**PAINTED RENDER**



**FACE BRICK**



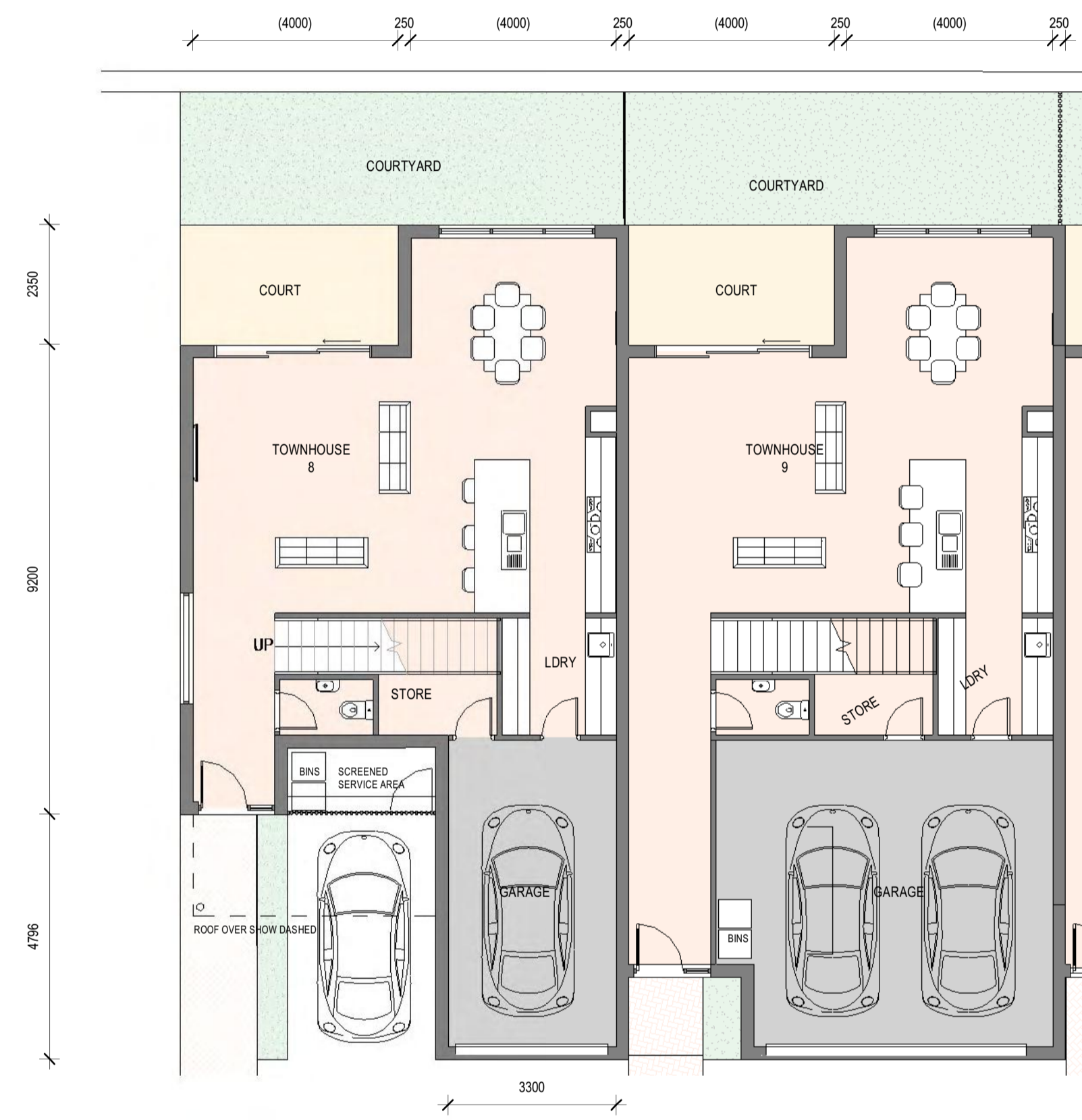
**FIBRE CEMENT WEATHERBOARD**



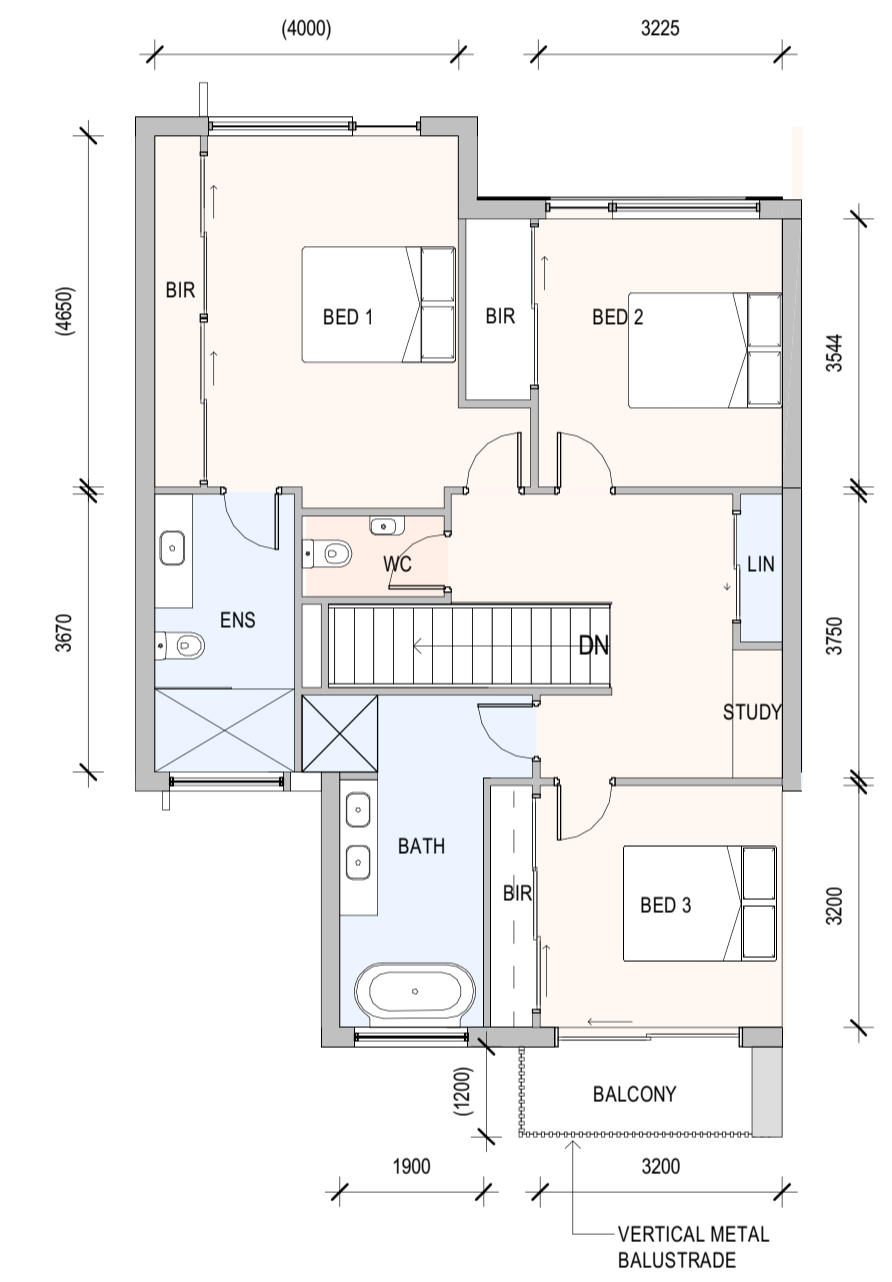
**WIDE PAN METAL CLADDING**



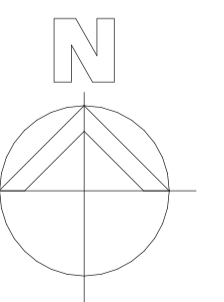
PERSPECTIVE OF TOWNHOUSE 8 -13

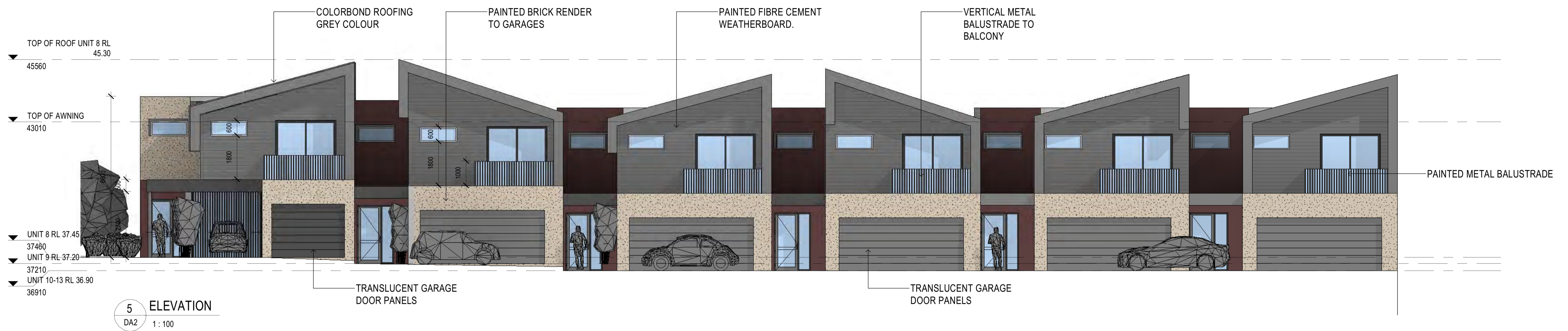


1 TYPICAL TOWNHOUSE 8-13  
1:100

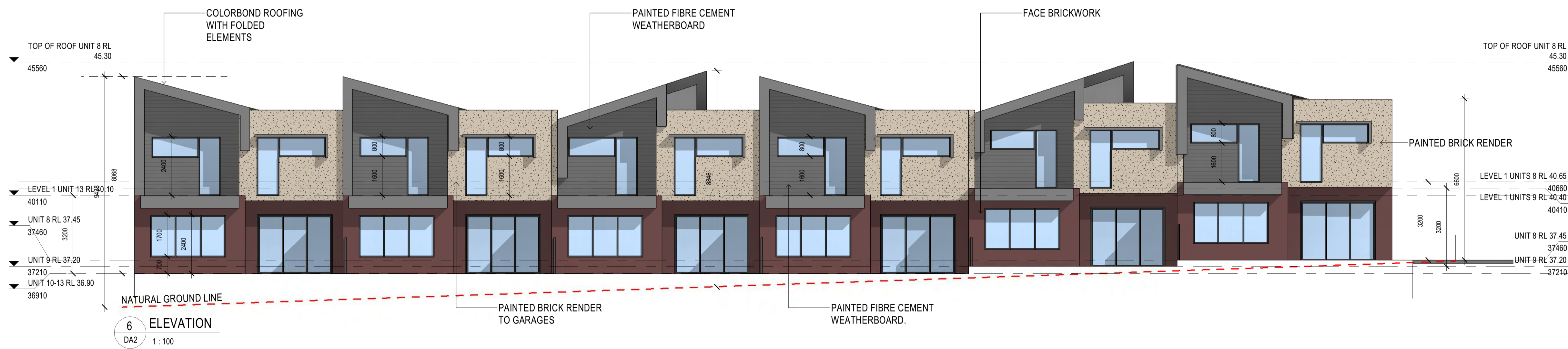


2 TYPICAL TOWNHOSUES 8-13 FIRST FLOOR  
DA7 1:100





**WIDE PAN METAL CLADDING**



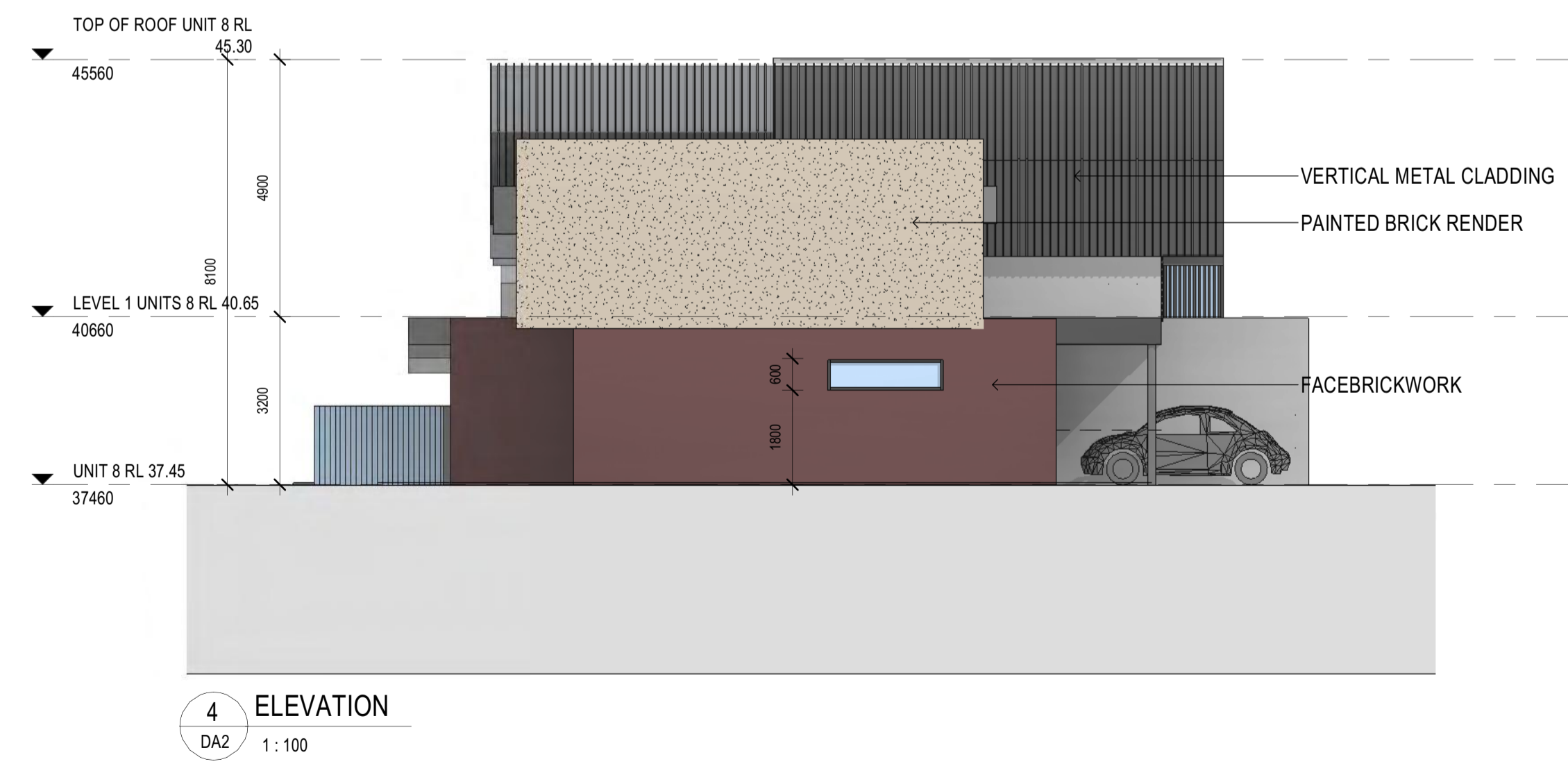
**PAINTED RENDER**



**FACE BRICK**



**FIBRE CEMENT WEATHERBOARD**



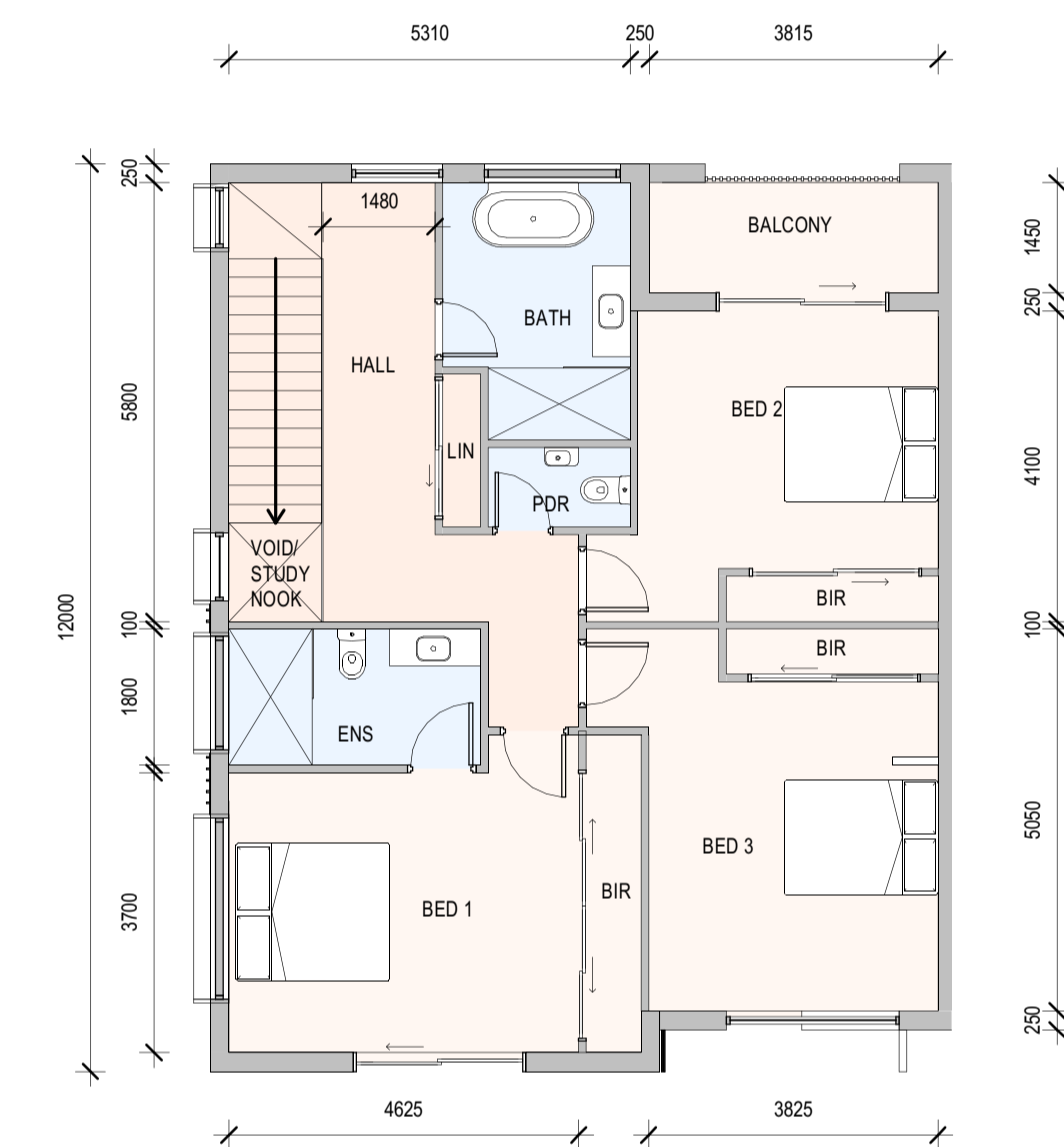
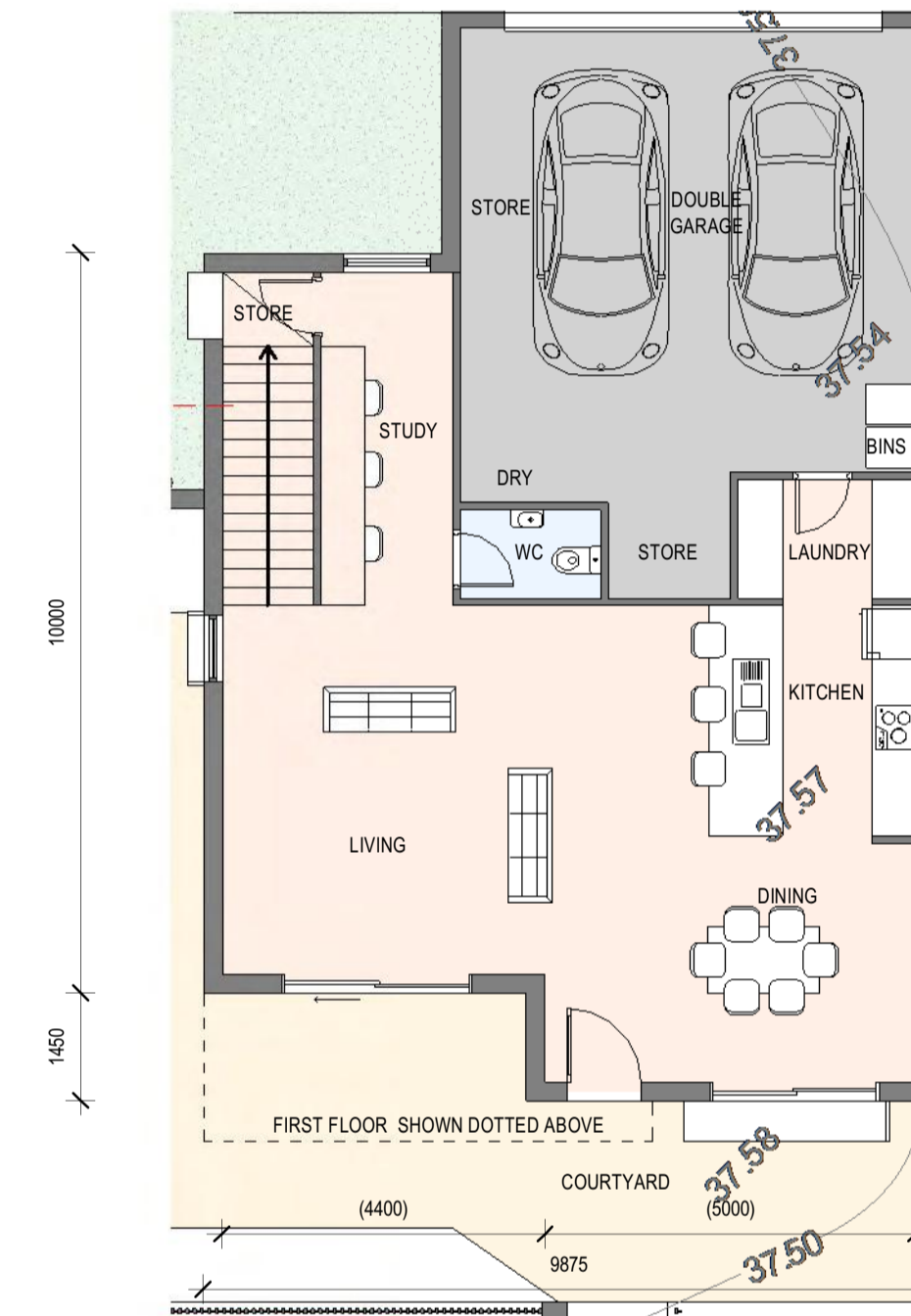
INTERIM ISSUE ONLY  
DATE: 18.08.2022

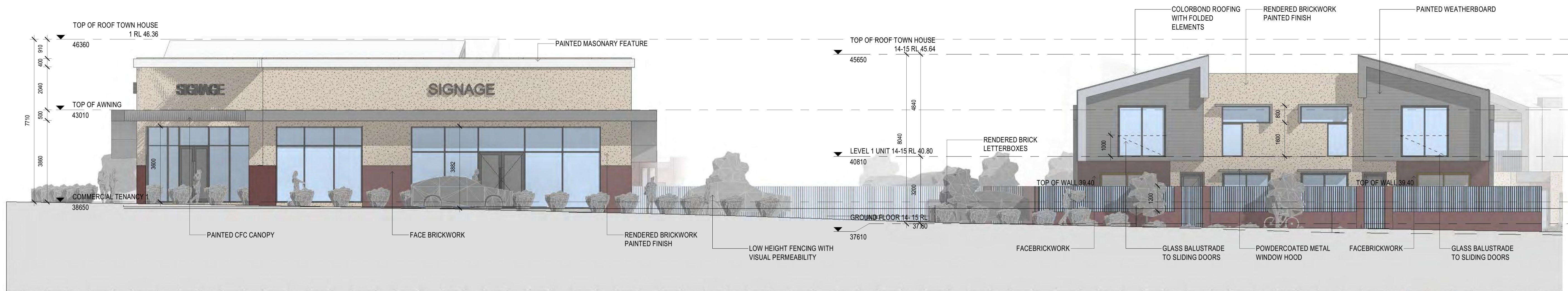


PERSPECTIVE OF TOWNHOUSE 15



INTERNAL PERSPECTIVE OF TOWNHOUSE 15 VIEWING THROUGH NORTHERN WINDOW





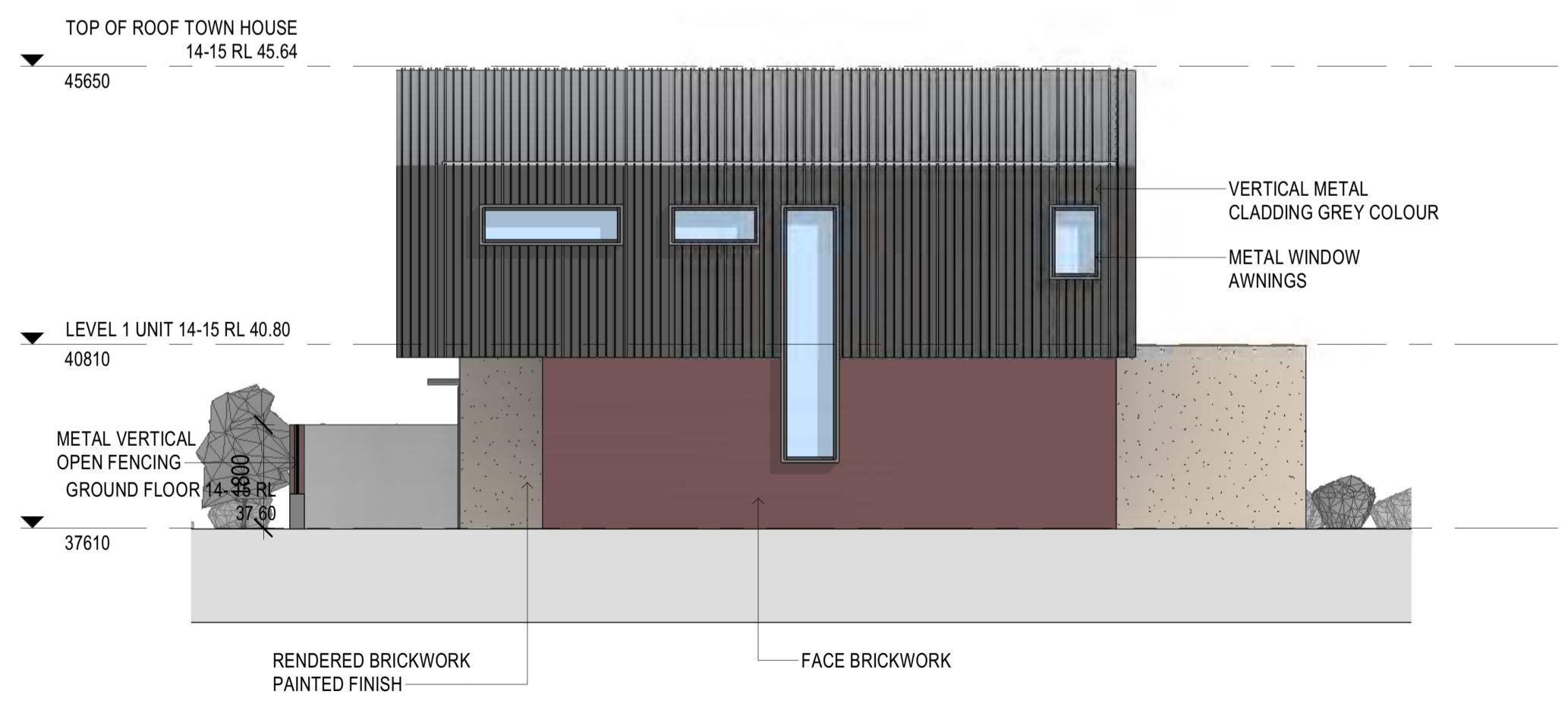
10 ELEVATION  
DA2 1:100



8 ELEVATION  
DA2 1:100



7 ELEVATION  
DA2 1:100



9 ELEVATION  
DA2 1:100



PAINTED RENDER



FACE BRICKS ELEMENTS



FIBRE CEMENT WEATHER BOARD



WIDE PAN METAL CLADDING