

DETAIL 2 - FRANGIBLE BOLLARD BEHIND MOUNTABLE KERB

EXISTING	LEGEND	PROPOSED
	SUBURBAN ECO 42W SCD	
	80W MV	
	125W MV	
	150W HPS	
	70W MH	
	36W LED	
	43W LED (3000K) NON DECORATIVE	

SPEED HUMP WITH RED ASPHALT TOP LAYER AND PIANO MARKINGS (DETAILS AS PER MAINROADS WA DRAWING NO. 200331-128-5) 0.40m GAP AT KERBLINE AND FRANGIBLE BOLLARDS ON BOTH SIDES BEHIND KERB IF MOUNTABLE KERB USED

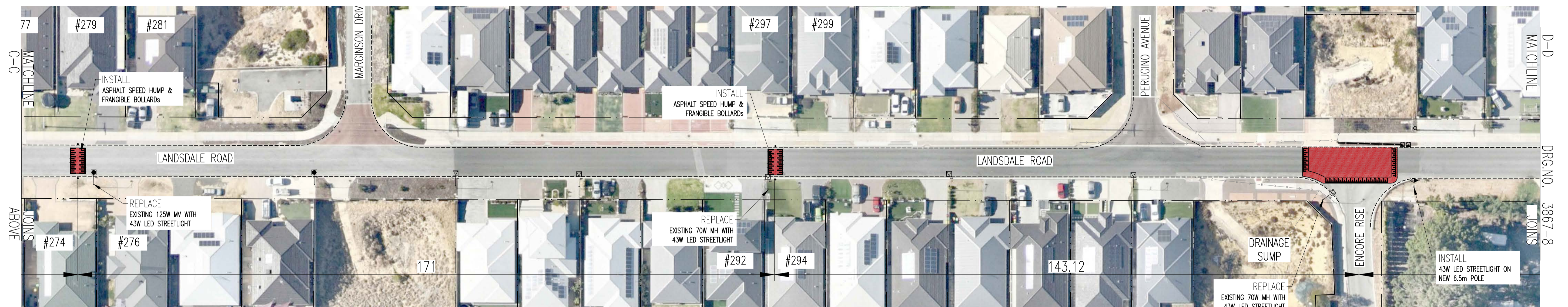
- NOTES:
- CADASTRAL INFORMATION APPROXIMATE ONLY.
 - ROAD WIDENING DETAILS ARE SUBJECT TO UNDERGROUND SERVICE LOCATIONS.
 - NEW STREETLIGHT POLES TO MATCH EXISTING DECORATIVE COLOURS.

CITY OF WANNEROO
ASSETS

LANDSDALE ROAD
MIRRABOOKA DRIVE TO ALEXANDER DRIVE
TRAFFIC MANAGEMENT SCHEME
LANDSDALE

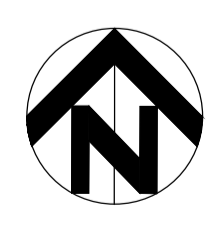
CONSTRUCTION PLAN
SHEET 1 OF 3

REVISION				REVISION				SCALE: 1:500				SURVEYED: NEARMAP SURVEYOR: K. RICHTER 1/2022				DRAWN: K. RICHTER CIVIL DESIGNER 2/2023				AUTHORISED: MANAGER INFRASTRUCTURE CAPITAL WORKS 2/2023				APPROVED: PRINCIPAL SPECIALIST TRAFFIC SERVICES			
No.	BY	DATE	AUTH	No.	BY	DATE	AUTH	DATUM: LOCAL	GRID: PCG	DESIGNED: K. RICHTER DRAFTED	2/2023	CHECKED: COORDINATOR DESIGN	APPROVED: DIRECTOR ASSETS	CONTAINER No. 44119	DRAWING No. 3867 - 6 - 0	SHEET 1 OF 3	REVISION	ORIGINAL DRG. SIZE A1									
A DRAFT COPY																											
O ISSUED FOR COMMUNITY CONSULTATION																PROJECT No. PR-4436											



EXISTING	LEGEND	PROPOSED
	SUBURBAN ECO 42W SCO	
	80W MV	
	125W MV	
	150W HPS	
	70W MH	
	36W LED	
	43W LED (3000K) NON DECORATIVE	

SPEED HUMP WITH RED ASPHALT TOP LAYER AND PIANO MARKINGS (DETAILS AS PER MAINROADS WA DRAWING NO. 200331-128-5) 0.40m GAP AT KERBLINE AND FRANGIBLE BOLLARDS ON BOTH SIDES BEHIND KERB IF MOUNTABLE KERB USED



- NOTES:**
- CADASTRAL INFORMATION APPROXIMATE ONLY.
 - ROAD WIDENING DETAILS ARE SUBJECT TO UNDERGROUND SERVICE LOCATIONS.
 - NEW STREETLIGHT POLES TO MATCH EXISTING DECORATIVE COLOURS.

CITY OF WANNEROO
ASSETS

LANDSDALE ROAD
MIRRABOOKA DRIVE TO ALEXANDER DRIVE
TRAFFIC MANAGEMENT SCHEME
LANDSDALE

CONSTRUCTION PLAN
SHEET 2 OF 3

APPROVED: _____
PRINCIPAL SPECIALIST TRAFFIC SERVICES

CONTAINER No. 44119

DRAWING No. 3867 - 7 - 0
SHEET 2 OF 3

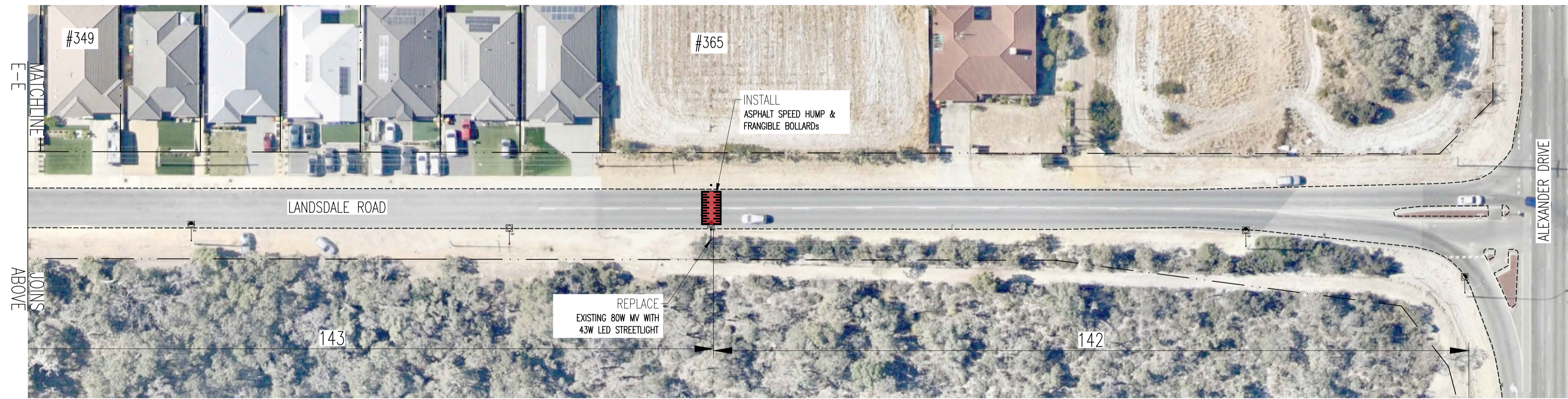
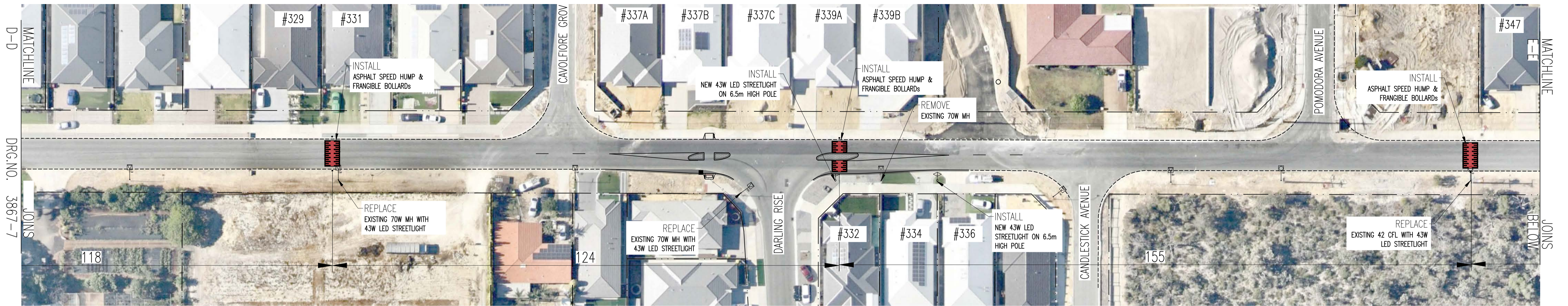
REVISION

ORIGINAL DRG. SIZE A1

No.	REVISION	BY	DATE	AUTH	No.	REVISION	BY	DATE	AUTH
A	DRAFT COPY		7/2022						
O	ISSUED FOR COMMUNITY CONSULTATION	K.R.	2/2023						

SCALE: 1:500 SCALE IN METRES	DATE: LOCAL	GRID: PCG	SURVEYED: NEARMAP SURVEYOR 1/2022	DRAWN: K. RICHTER CIVIL DESIGNER 2/2023	AUTHORISED: MANAGER INFRASTRUCTURE CAPITAL WORKS 2/2023
			DESIGNED: K. RICHTER DRAFTED 2/2023	CHECKED: COORDINATOR DESIGN	APPROVED: DIRECTOR ASSETS

APPROVED: _____	CONTAINER No. 44119
PROJECT No. PR-4436	



EXISTING	LEGEND	PROPOSED
	SUBURBAN ECO 42W SCO	
	80W MV	
	125W MV	
	150W HPS	
	70W MH	
	36W LED	
	43W LED (3000K) NON DECORATIVE	
	SPEED HUMP WITH RED ASPHALT TOP LAYER AND PIANO MARKINGS (DETAILS AS PER MAINROADS WA DRAWING NO. 200331-128-5)	
	0.40m GAP AT KERBLINE AND FRANGIBLE BOLLARDS ON BOTH SIDES BEHIND KERB IF MOUNTABLE KERB USED	

- NOTES:**
- CADASTRAL INFORMATION APPROXIMATE ONLY.
 - ROAD WIDENING DETAILS ARE SUBJECT TO UNDERGROUND SERVICE LOCATIONS.
 - NEW STREETLIGHT POLES TO MATCH EXISTING DECORATIVE COLOURS.

CITY OF WANNEROO
ASSETS

LANDSDALE ROAD
MIRRABOOKA DRIVE TO ALEXANDER DRIVE
TRAFFIC MANAGEMENT SCHEME
LANDSDALE

CONSTRUCTION PLAN
SHEET 3 OF 3

No. REVISION		BY	DATE	AUTH	No.	REVISION		BY	DATE	AUTH	SCALE: 1:500	DATE: LOCAL	GRID: PCG	SURVEYED: NEARMAP SURVEYOR: K. RICHTER DRAFTED: 1/2022	DESIGNED: K. RICHTER 2/2023	CHECKED: COORDINATOR DESIGN	DRAWN: K. RICHTER CIVIL DESIGNER 2/2023	AUTHORISED: MANAGER INFRASTRUCTURE CAPITAL WORKS	APPROVED: DIRECTOR ASSETS	CONTAINER No. 44119	DRAWING No. SHEET 3 OF 3	REVISION	ORIGINAL DRG. SIZE
A	DRAFT COPY		/2022																				
0	ISSUED FOR COMMUNITY CONSULTATION	K.R.	2/2023																	PR-4436	3867 - 8 - 0		A1