



**APPENDIX 10**


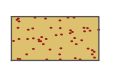



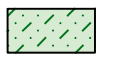




**10. LANDSCAPE CONCEPT PLANS**

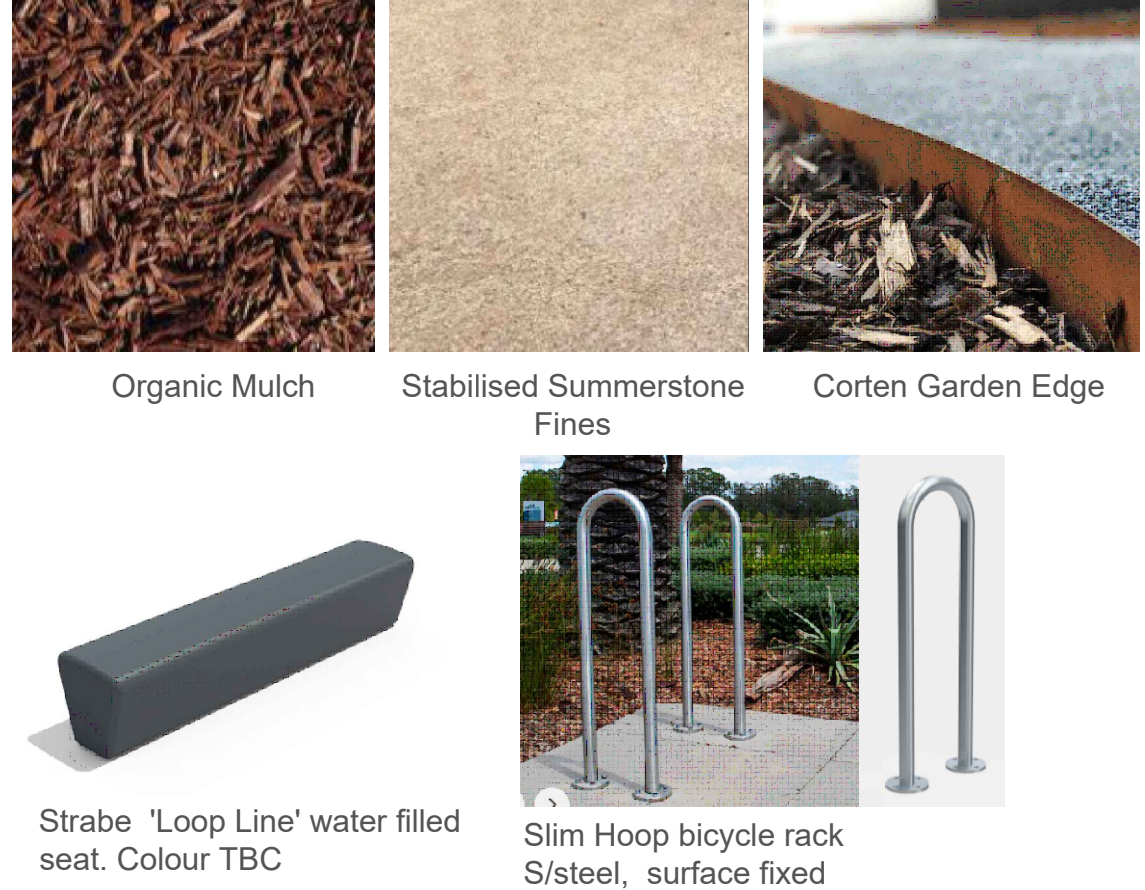
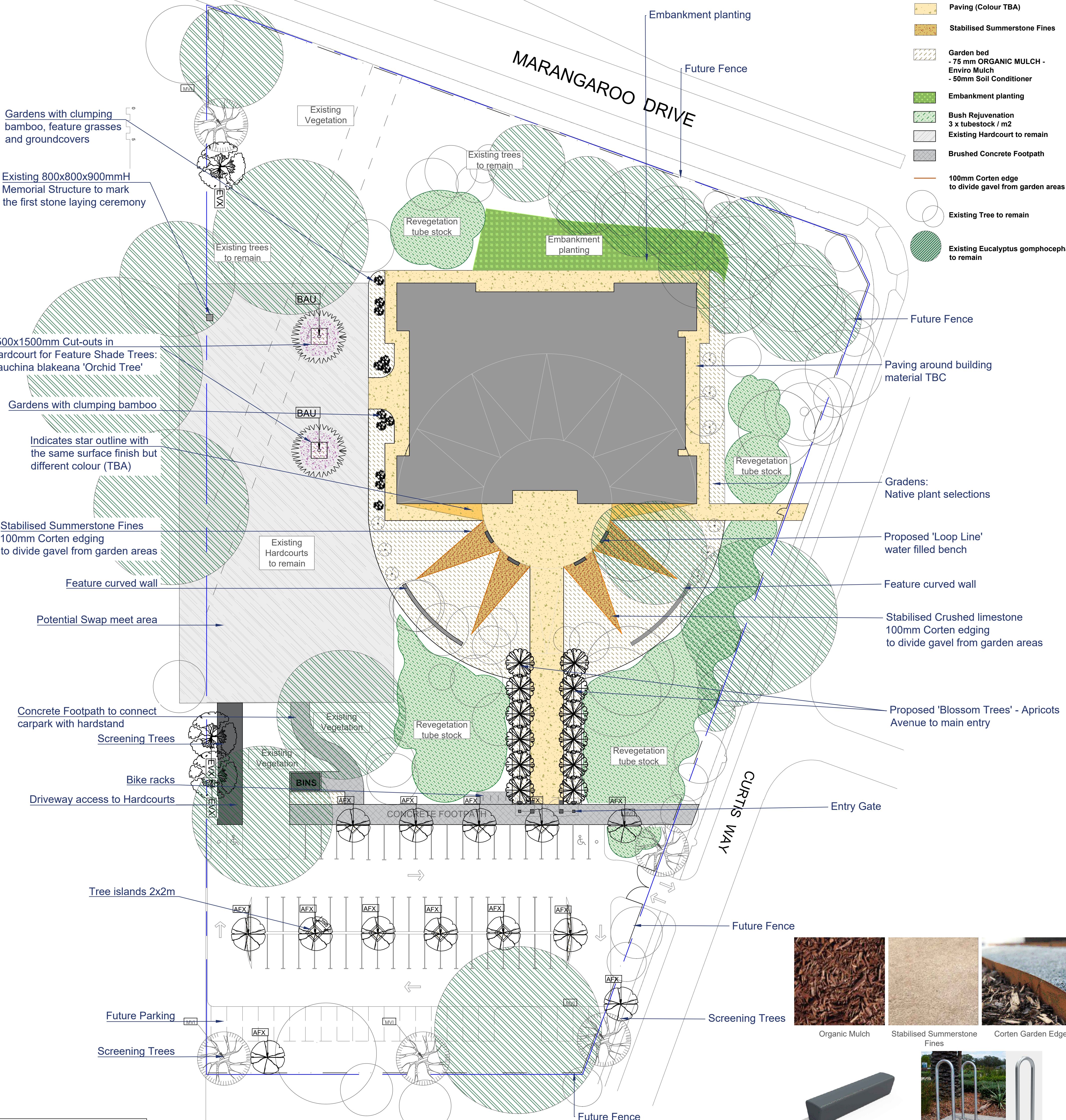
Deep Green Landscaping

SITE doc ref: 230417 Deep Green LA-DG-001\_VCC (RevD) and 230417 Deep Green LA-DG-002\_VCC (RevC)

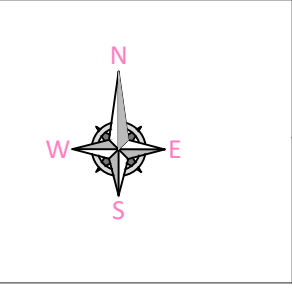
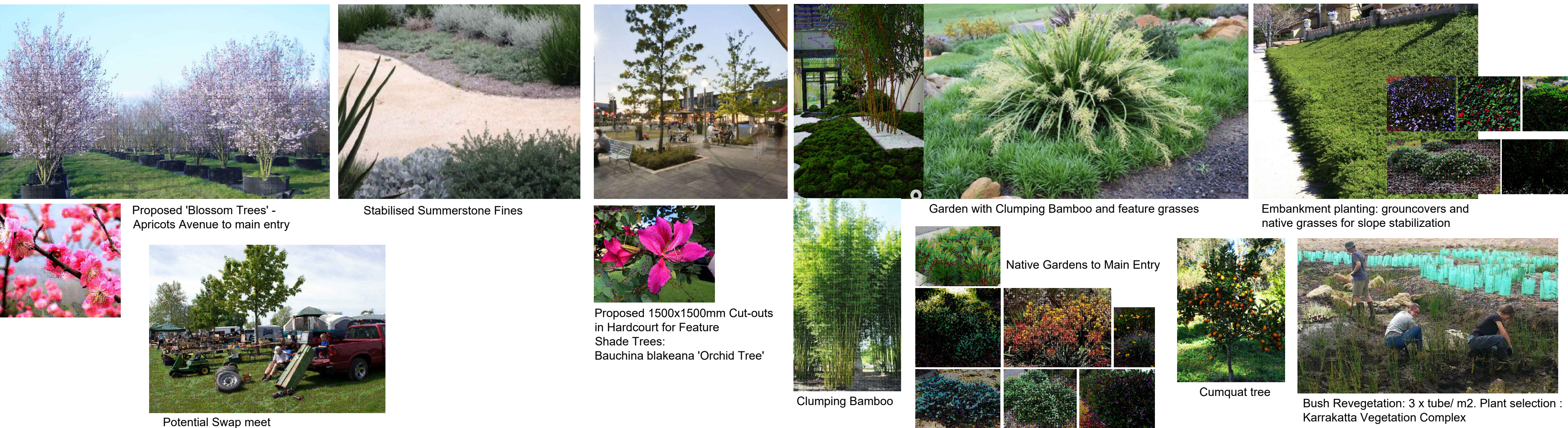


**LEGEND**

-  Paving (Colour TBA)
-  Stabilised Summerstone Fines
-  Garden bed - 75 mm ORGANIC MULCH - Enviro Mulch - 50mm Soil Conditioner
-  Embankment planting
-  Bush Rejuvenation 3 x tubestock / m2
-  Existing Hardcourt to remain
-  Brushed Concrete Footpath
-  100mm Corten edge to divide gavel from garden areas
-  Existing Tree to remain
-  Existing Eucalyptus gomphocephala to remain



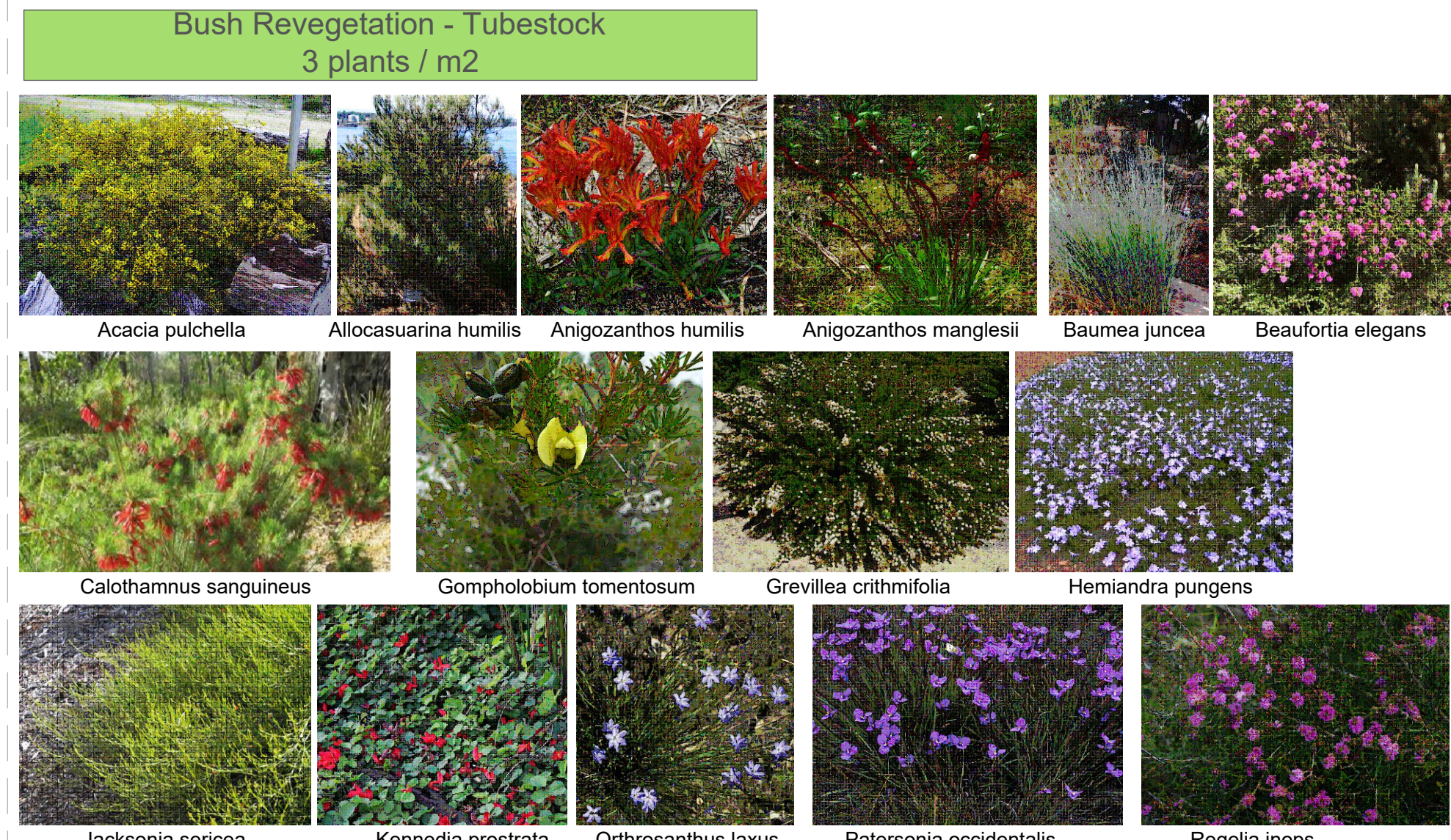
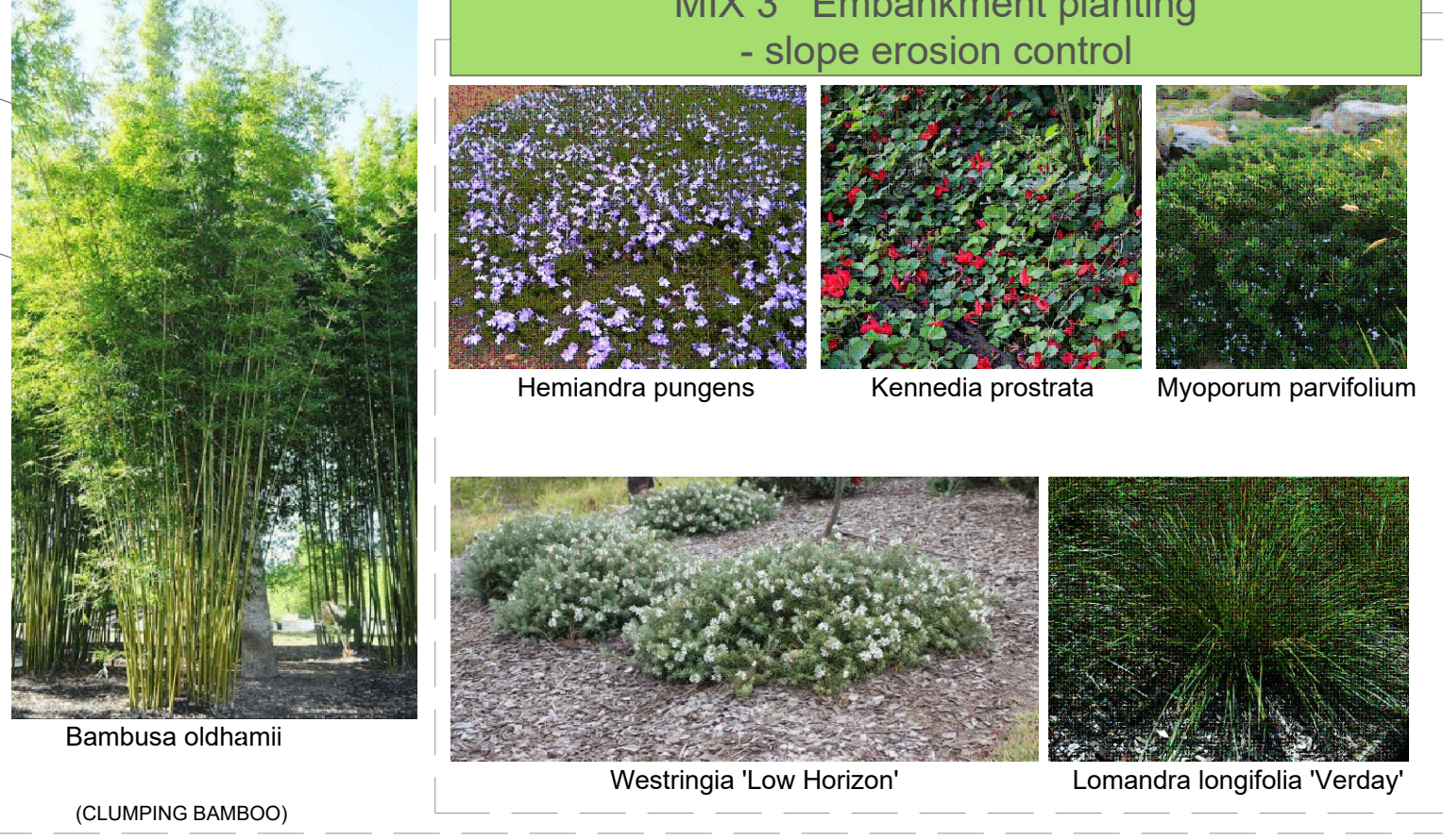
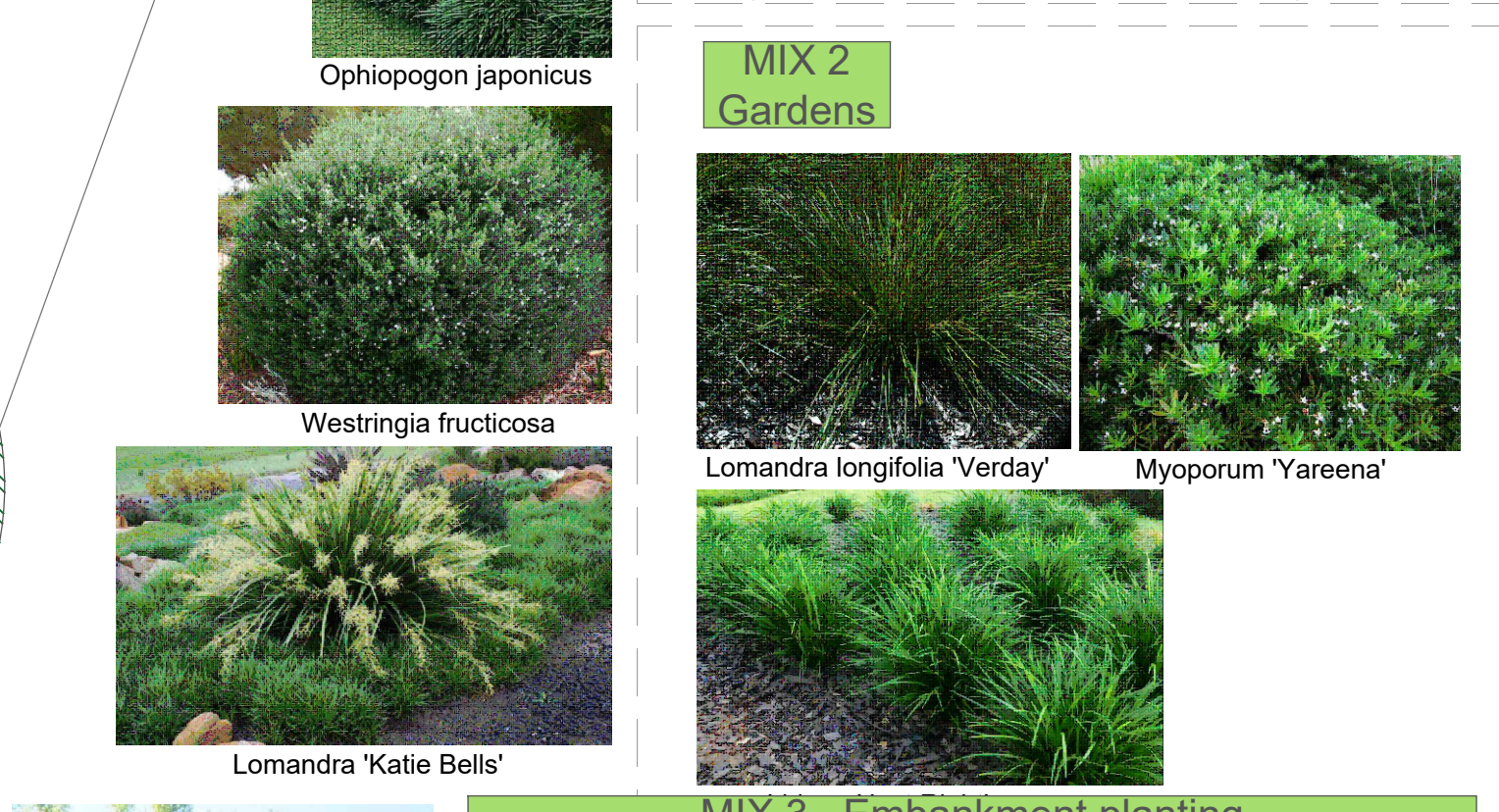
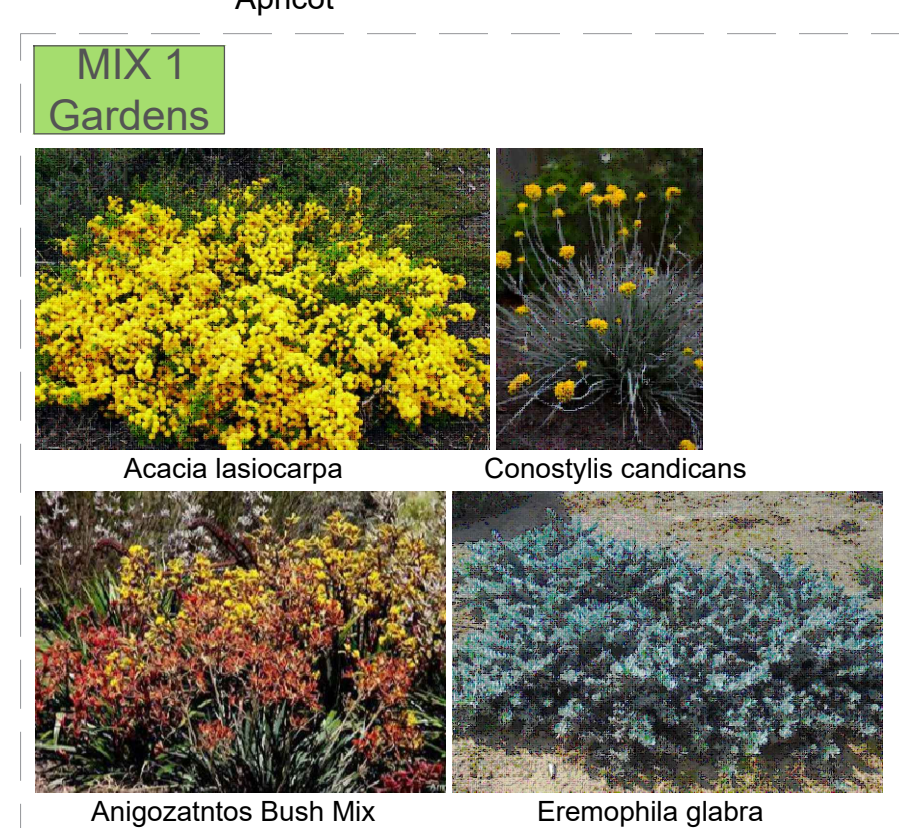
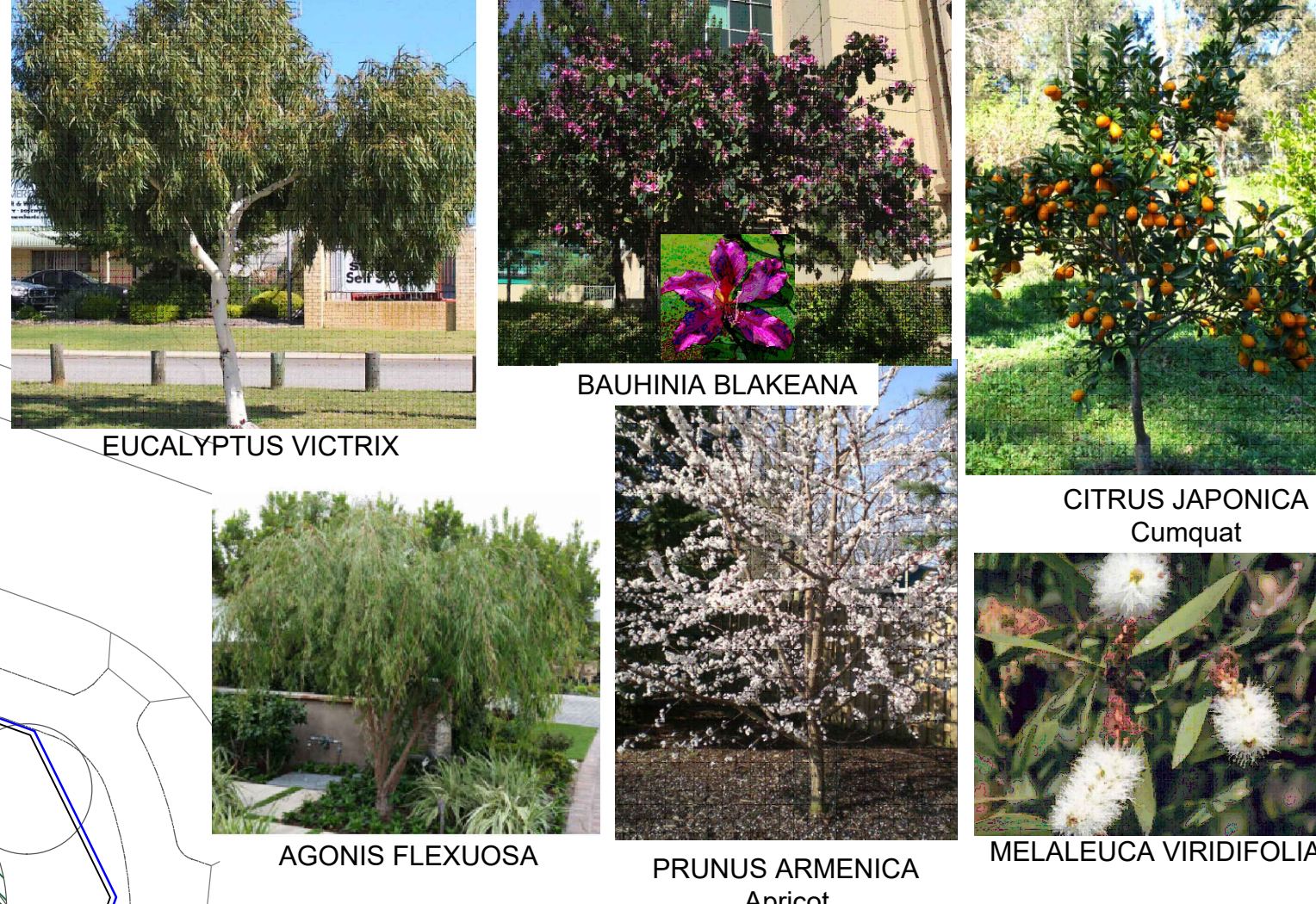
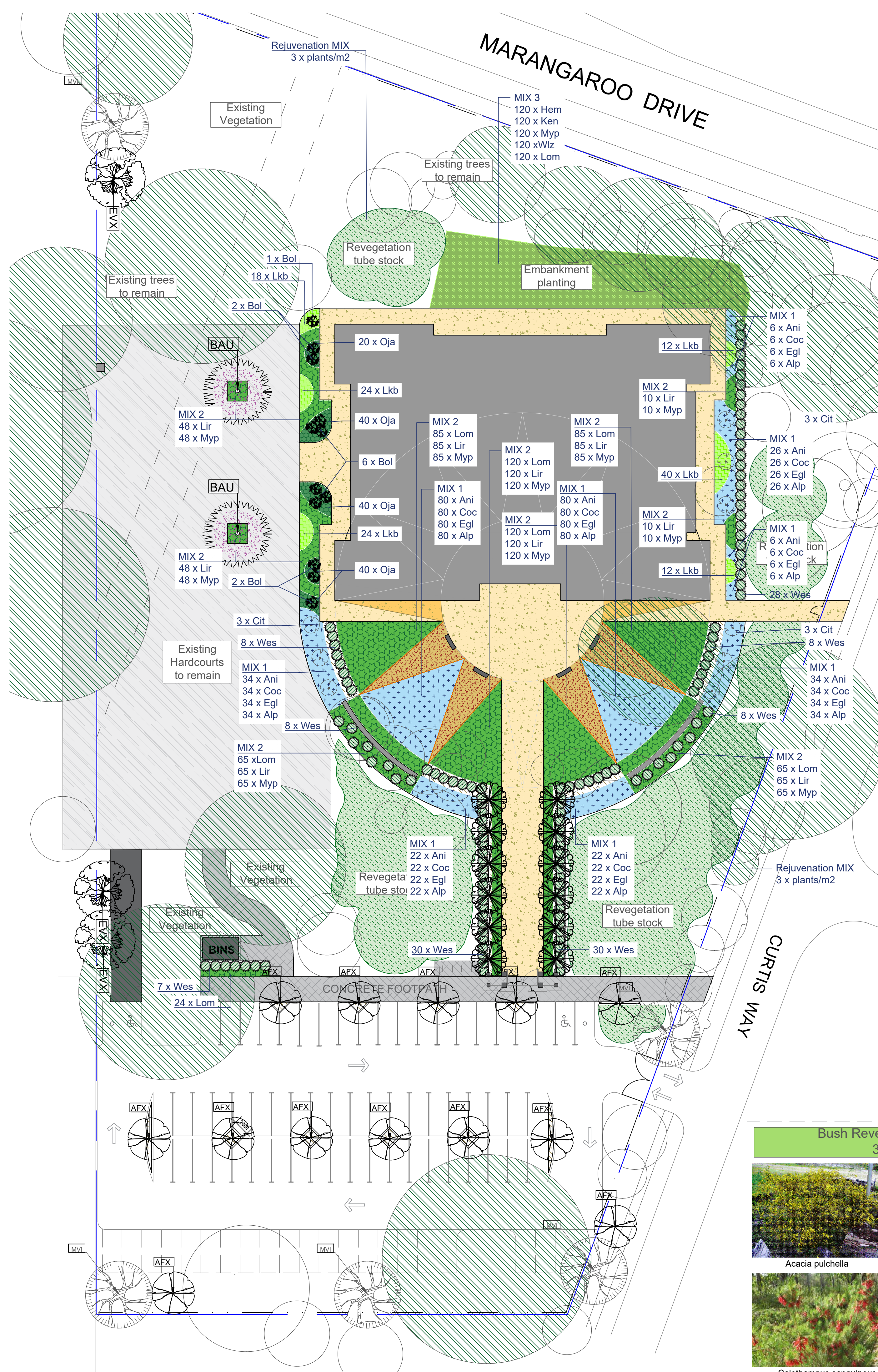
**INSPIRATION PICTURES**



PROJECT <b>Vietnamese Cultural Centre WA</b>		DRAWING <b>LANDSCAPE PLAN</b>		ISSUE <b>FOR APPROVAL</b>	
ADDRESS <b>Cnr Marangaroo Dr and Curtis Way, GIRRAWHEEN, WA</b>		DRAWING NO <b>LA-DG-001</b>	SCALE <b>1:300</b>	SHEET <b>A1</b>	REVISION <b>D</b>
DRAWN <b>JG</b>	CHECKED <b>JR</b>	DATE <b>17.04.23</b>			

REVISIONS		
No	DATE	DETAILS
A	27/02/23	FOR APPROVAL
B	08/03/23	FOR APPROVAL
C	14/04/23	FOR APPROVAL
D	17/04/23	FOR APPROVAL

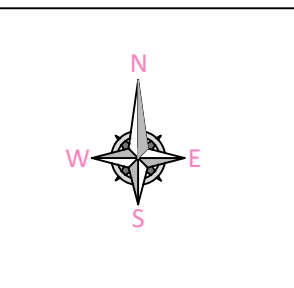




Revegetation - Tubestock								
%	Genus	Species	Common name	QTY Size/m2	Mature Size	Flowers	Colour	QTY
5%	Acacia	pulchella	Prickly Moses	3x tube /m2	2 mH	Aug-Sep	Yellow	192
5%	Allocasuarina	humilis	Dwarf Sheoak	3x tube /m2	1.5 mH	May-Nov		192
5%	Anigozanthos	humilis	Catpaw	3x tube /m2	0.5 mH	Aug-Oct	Yellow/Red	192
5%	Anigozanthos	manglesii	Mangles Kangaroo Paw	3x tube /m2	0.5 mH	Sep-Nov	Red/Green	192
10%	Baumea	juncea	Bare Twig-rush	3x tube /m2	1 mH	Oct-Jan	Brown	384
10%	Beaufortia	elegans	Elegant Beaufortia	3x tube /m2	1 mH	Nov-Feb	Purple	384
10%	Calothamnus	sanguineus	Silky Leaved Blood Flower	3x tube /m2	1 mH	Mar-Nov	Red	384
5%	Gompholobium	tomentosum	Yellow Pea	3x tube /m2	0.5 mH	Aug-Dec	Yellow	192
10%	Grevillea	crithmifolia		3x tube /m2	1 mH	Jul-Sep	White	384
10%	Hemianandra	pungens	Snake Bush	3x tube /m2	low	All year	purple	384
5%	Jacksonia	sericea	"Waldjumi"	3x tube /m2	0.6 mH	Dec-Feb	Orange	192
5%	Kennedia	prostrata	Running Postman	3x tube /m2	low	Jul-Nov	Red	192
5%	Orthrosanthus	laxus	Morning Iris	3x tube /m2	0.5 mH	Aug-Oct	Mauve	192
5%	Patersonia	occidentalis	Western Patersonia	3x tube /m2	0.5 mH	Sep-Dec	Purple	192
5%	Regelia	inops		3x tube /m2	2 mH	Oct-Jan	Mauve	192

TREES SCHEDULE					
Code	Botanic Name	Spacings plants/m2	Size	QTS	MATURE SIZE
BAU	BAUHINIA BLAKEANA	AS SHOWN	200 LT	2	7m(H) x 6m (W)
PRU	PRUNUS ARMENICA Apricot	AS SHOWN	100 LT	12	4m(H) x 4m (W)
CIT	CITRUS JAPONICA Cumquat	AS SHOWN	45 LT	9	2.5m(H) x 2m (W)
EVX	EUCALYPTUS VICTRIX	AS SHOWN	100 LT	3	7m(H) x 6m (W)
AFX	Agonis flexuosa WA PEPPERMINT	AS SHOWN	100 LT	13	10m(H) x 5m (W)
MAL	MALALEUCA VIRIDIFOLIA	AS SHOWN	100 LT	5	8m(H) x 5m (W)

PLANT SCHEDULE GARDENS				
Code	Botanic Name	Spacings plants/m2	Size	QTS
Shrubs, groundcovers & grasses				
Ani	Anigozanthos bush Mix	4	tube	310
Egl	Eremophila glabra	4	tube	310
Coc	Conostylis candicans	4	tube	310
Alp	Acacia lasiocarpa prostrate	4	tube	310
Lom	Lomandra 'Verday'	4	140mm	564
Lir	Liriope 'Just Right'	4	140mm	656
Myp	Myoporum 'Yareena'	4	140mm	656
Lom	Lomandra 'Verday'	2	140mm	120
Hem	Hemianandra pungens	2	140mm	120
Myp	Myoporum 'Yareenna'	2	140mm	120
Wlz	Westringia 'Low Horizon'	2	140mm	120
Ken	Kennedia prostrata	2	140mm	120
Lkb	Lomandra 'Katie Bells'	4	140mm	130
Oja	Ophiopogon japonica	4	140mm	120
Wes	Westringia fruticosa 'Zena'	100mm APART	140mm	127
Bol	Bambusa oldhamii	AS SHOWN	30 Ltr	12

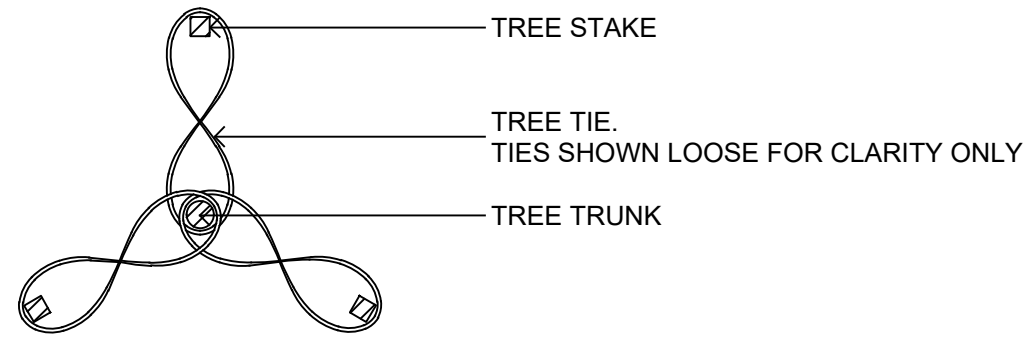


REVISIONS			
No	DATE	DRAWN	DETAILS
A	08/03/23	JG	FOR APPROVAL
B	14/04/23	JG	FOR APPROVAL
C	17/04/23	JG	FOR APPROVAL

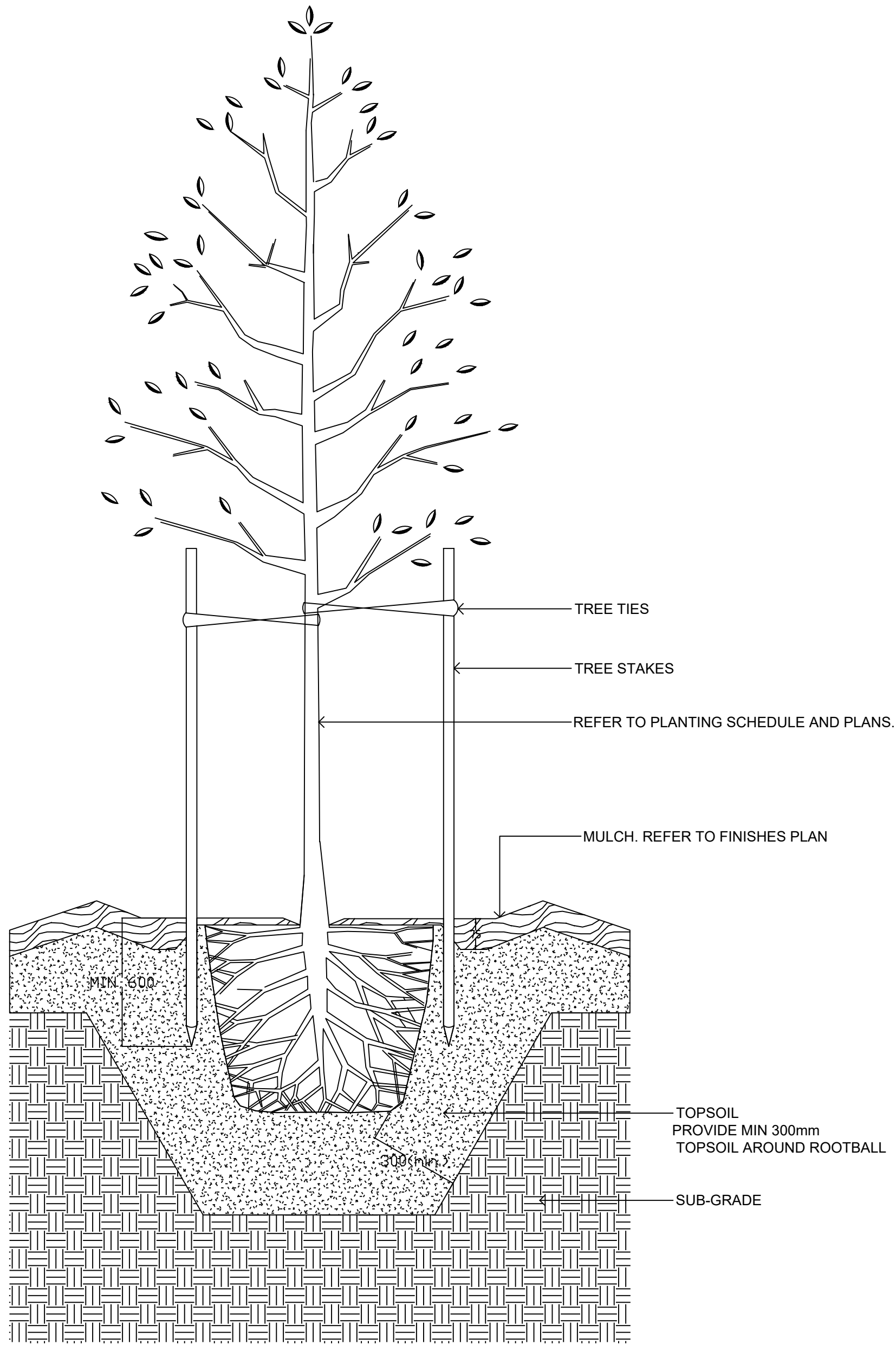
**Landscaping Notes:**

- 50mm thickness of soil conditioner mixed in to site soil for all gardens and additional depth soil allowance in tree locations
- Slow release fertiliser to be incorporated within planting holes at the time of planting
- Plants shall not be planted within 500mm of kerbs, roads or driveways
- Gardens to be mulch with 75mm thick layer of Organic Mulch
- Gardens to be reticulated
- Tree selections based on City of Wanneroo Preferred Tree Species List

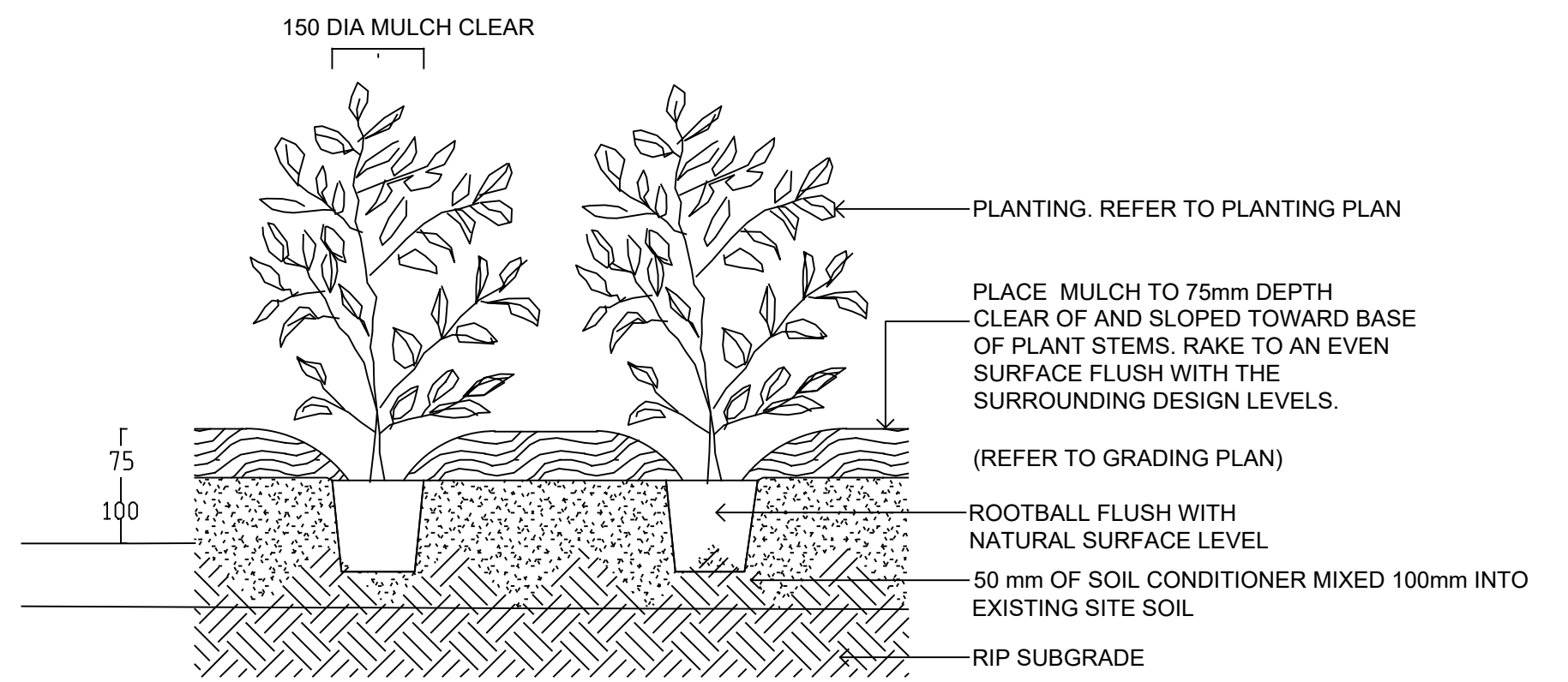




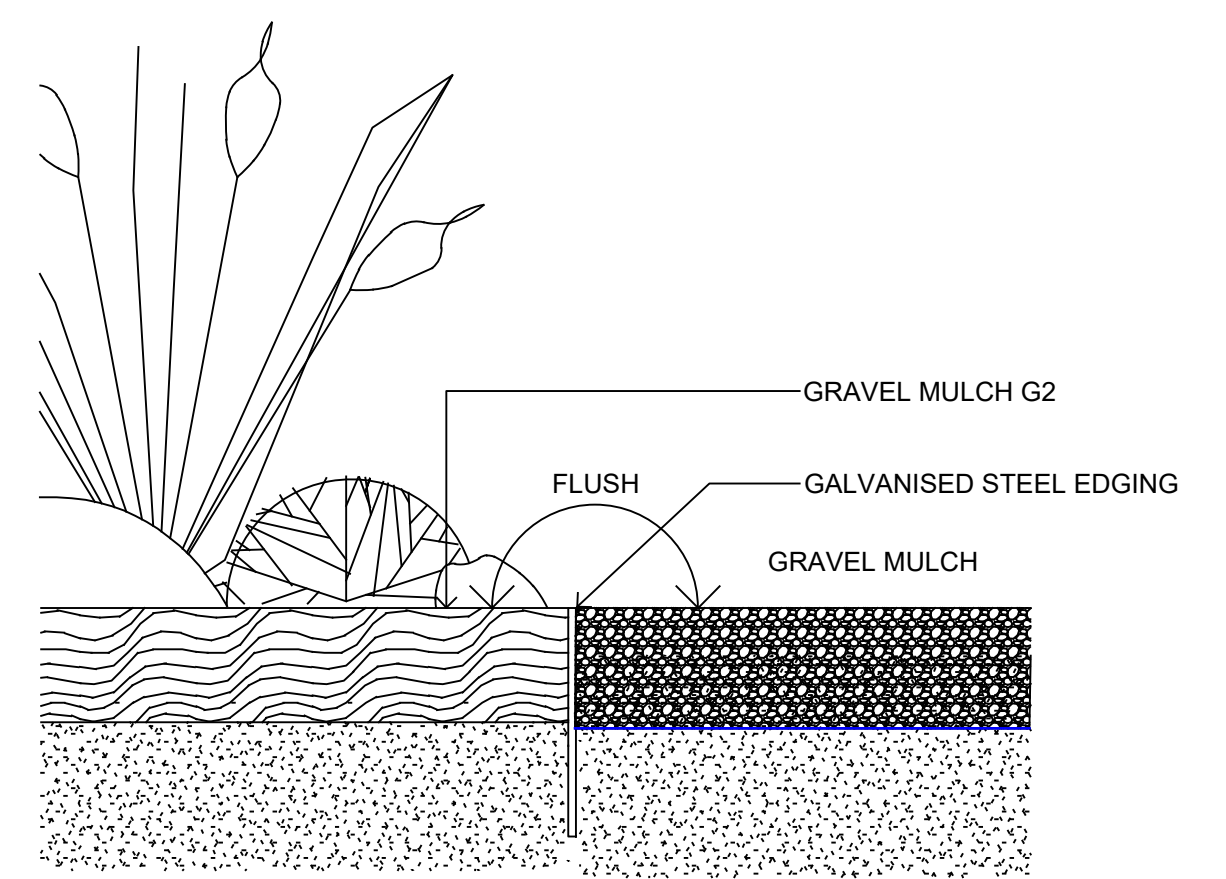
1 TYPICAL TREE TIES  
 SCALE 1:20



2 TREE PLANTING IN GARDEN BED  
 SCALE 1:20



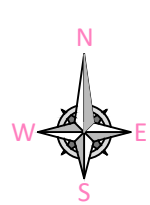
3 TYPICAL PLANTING  
 SCALE 1:10



4 GALVANISED STEEL GARDEN BED EDGING  
 SCALE 1:5

**Landscaping Notes:**

- 50mm thickness of soil conditioner mixed in to site soil for all gardens and additional depth soil allowance in tree locations. Slow release fertiliser to be incorporated within planting holes at the time of planting
- Plants shall not be planted within 500mm of kerbs, roads or driveways
- Gardens to be mulch with 75mm thick layer of Organic Mulch
- Gardens to be reticulated
- Tree selections based on City of Wanneroo Preferred Tree Species List



PROJECT <b>Vietnamese Cultural Centre WA</b>		DRAWING <b>LANDSCAPE PLAN DETAILS</b>				ISSUE <b>FOR APPROVAL</b>			REVISIONS			
ADDRESS <b>Crn Marangaroo Dr and Curtis Way, GIRRAWHEEN, WA</b>		DRAWING NO <b>LA-DG-003</b>	SCALE <b>AS SHOWN</b>	SHEET <b>A1</b>	REVISION <b>A</b>	DRAWN <b>JG</b>	CHECKED <b>JR</b>	DATE <b>14.04.23</b>	No	DATE	DRAWN	DETAILS
									A	14/04/23	JG	FOR APPROVAL



## **VIETNAMESE CULTURAL CENTRE LANDSCAPE DESIGN CONCEPT**

The intent of design is to create aesthetically pleasing, cohesive landscape that will complement proposed Vietnamese Cultural Centre Building.

Balance between landscaped and hardscaped areas assists with community comfort through shade and the reduction of glare as well as provide visual and acoustic screening from the neighbouring lots.

In our opinion merit of proposed landscaping is being appropriate to the intent of the Council Policy, meeting environmental, social and aesthetic policy objectives.




### Design principles:

- Create Vietnamese style inspired garden to complement Cultural Centre Building.
- Follow the concept of Ngoc Lu drum in plant layout to the Main Entry.
- Use of native plant species – preferably endemic to area in gardens close to the building.
- Maximize and mimic benefits of natural ecosystem.
- Preserve and protect Tuart Trees (*Eucalyptus gomphocephala*): landscape works in proximity of retained trees to be done with caution to not disturb root system (hand digging), branch protection measures .

### Plant selection philosophy:

- The choice of plants is based on their value or significance throughout the year. They help underscore the passing of the seasons, one of the fundamental principles in the composition of Vietnamese Garden. Each season offers its unique atmosphere.
- Fusion: use of native plant species – preferably endemic to area along with some oriental looking species (*Bambusa oldhamii*, *Ophiopogon japonicus*) closer to the building to create Vietnamese garden feel.
- Incorporating Cumquat and Apricot Trees (an enduring symbols of the Lunar New Year)
- 1.5 x 1.5m cut-outs in Hardcourts for 2 x Bauhinia trees.
- Low maintenance and hardy (waterwise/low water demand) planting selections - mostly endemic and bird attracting species that perform well in Perth climate - to create wildlife habitat
- Combination of high-quality planting soil, reticulation and use of waterwise mulch to reduce water evaporation.
- Areas of revegetation – tube stock plants typical to Karrakata vegetation complex.



TREES SCHEDULE					
Code	Botanic Name	Spacings plants/m2	Size	QTS	MATURE SIZE
BAU 	BAUHINIA BLAKEANA	AS SHOWN	200 LT	2	7m(H) x 6m (W)
PRU 	PRUNUS ARMENICA Apricot	AS SHOWN	100 LT	12	4m(H) x 4m (W)
CIT 	CITRUS JAPONICA Cumquat	AS SHOWN	45 LT	9	2.5m(H) x 2m (W)
EVI 	EUCALYPTUS VICTRIX	AS SHOWN	100 LT	3	7m(H) x 6m (W)
AFX 	Agonis flexuosa WA PEPPERMINT	AS SHOWN	100 LT	13	10m(H) x 5m (W)
MVI 	MALALEUCA VIRIDIFOLIA	AS SHOWN	100 LT	5	8m(H) x 5m (W)



PRUNUS ARMENICA  
Apricot



CITRUS JAPONICA  
Cumquat



EUCALYPTUS VICTRIX



BAUHINIA BLAKEANA





AGONIS FLEXUOSA

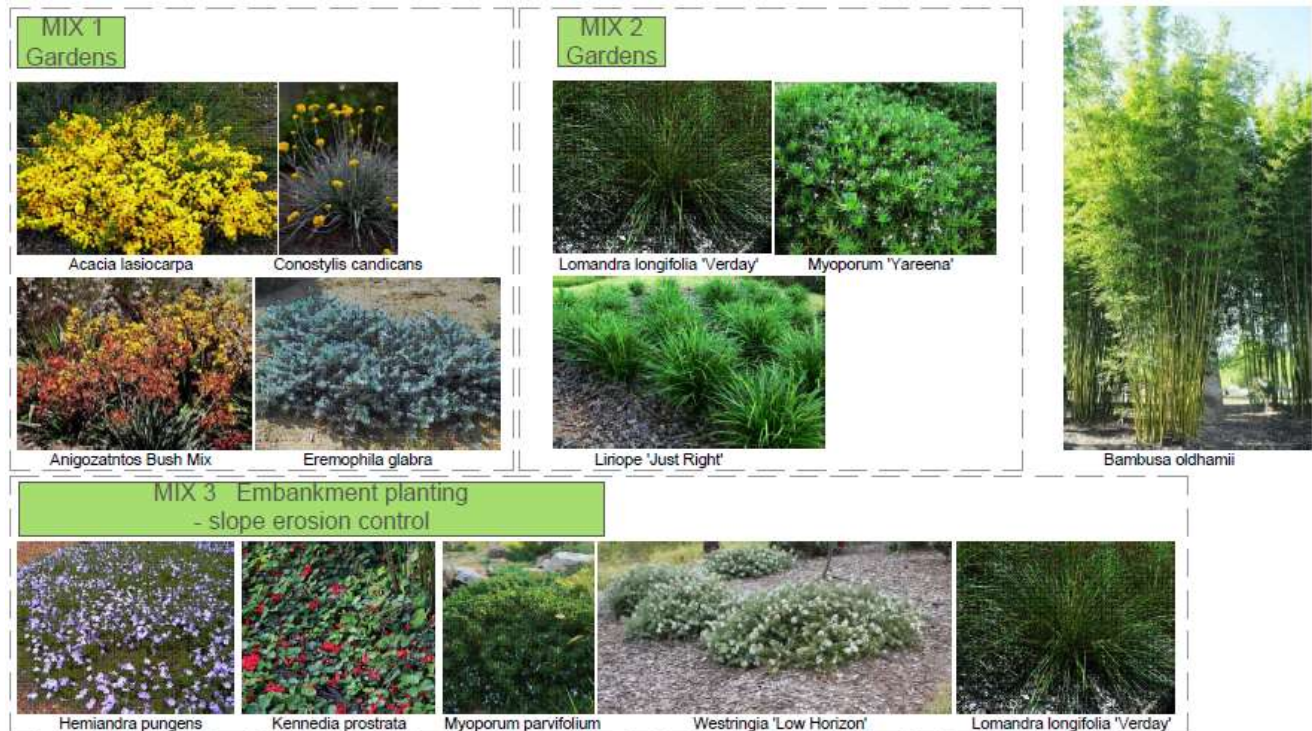


MALALEUCA VIRIDIFOLIA





PLANT SCHEDULE GARDENS				
Code	Botanic Name	Spacings plants/m2	Size	
Shrubs, groundcovers & grasses				
+ + + + MIX 1	Ani	Anigozanthos bush Mix	4	tube
	Egl	Eremophila glabra	4	tube
	Coc	Conostylis candicans	4	tube
	Alp	Acacia lasiocarpa prostrate	4	tube
MIX 2	Lom	Lomandra 'Verday'	4	140mm
	Lir	Liriope 'Just Right'	4	140mm
	Myp	Myoporum 'Yareena'	4	140mm
MIX 3	Lom	Lomandra 'Verday'	3	140mm
	Hem	Hemiandra pungens	3	140mm
	Myp	Myoporum 'Yareenna'	3	140mm
	Wiz	Westringia 'Low Horizon'	3	140mm
	Ken	Kennedia prostrata	3	140mm
Lkb	Lomandra 'Katie Bells'	4	140mm	
Oja	Ophiopogon japonica	4	140mm	
	Wes	Westringia fruticosa 'Zena'	1000mm APART	140mm
	Bol	Bambusa oldhamii	AS SHOWN	30 Ltr





Revegetation - Tubestock							
KARRAKATTA VEGETATION COMPLEX							
%	Genus	Species	Common name	QTY Size/m2	Mature Size	Flowers	Colour
5%	Acacia	pulchella	Prickly Moses	3 x tube /m2	2 mH	Aug-Sep	Yellow
5%	Allocasuarina	humilis	Dwarf She oak	3 x tube /m2	1.5 mH	May-Nov	
5%	Anigozanthos	humilis	Catspaw	3 x tube /m2	0.5 mH	Aug-Oct	Yellow/ Red
5%	Anigozanthos	manglesii	Mangles Kangaroo Paw	3 x tube /m2	0.5 mH	Sep-Nov	Red/ Green
10%	Baumea	juncea	Bare Twig-rush	3 x tube /m2	1 mH	Oct-Jan	Brown
10%	Beaufortia	elegans	Elegant Beaufortia	3 x tube /m2	1 mH	Nov-Feb	Purple
10%	Calothamnus	sanguineus	Silky Leaved Blood Flower	3 x tube /m2	1 mH	Mar-Nov	Red
5%	Gompholobium	tomentosum	Yellow Pea	3 x tube /m2	0.5 mH	Aug-Dec	Yellow
10%	Grevillea	crithmifolia		3 x tube /m2	1 mH	Jul-Sep	White
10%	Hemiandra	pungens	Snake Bush	3 x tube /m2	low	All year	purple
5%	Jacksonia	sericea	"Waldjumi"	3 x tube /m2	0.6 mH	Dec-Feb	Orange
5%	Kennedia	prostrata	Running Postman	3 x tube /m2	low	Jul-Nov	Red
5%	Orthrosanthus	laxus	Morning Iris	3 x tube /m2	0.5 mH	Aug-Oct	Mauve
5%	Patersonia	occidentalis	Western Patersonia	3 x tube /m2	0.5 mH	Sep-Dec	Purple
5%	Regelia	inops		3 x tube /m2	2 mH	Oct-Jan	Mauve

