

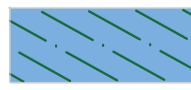
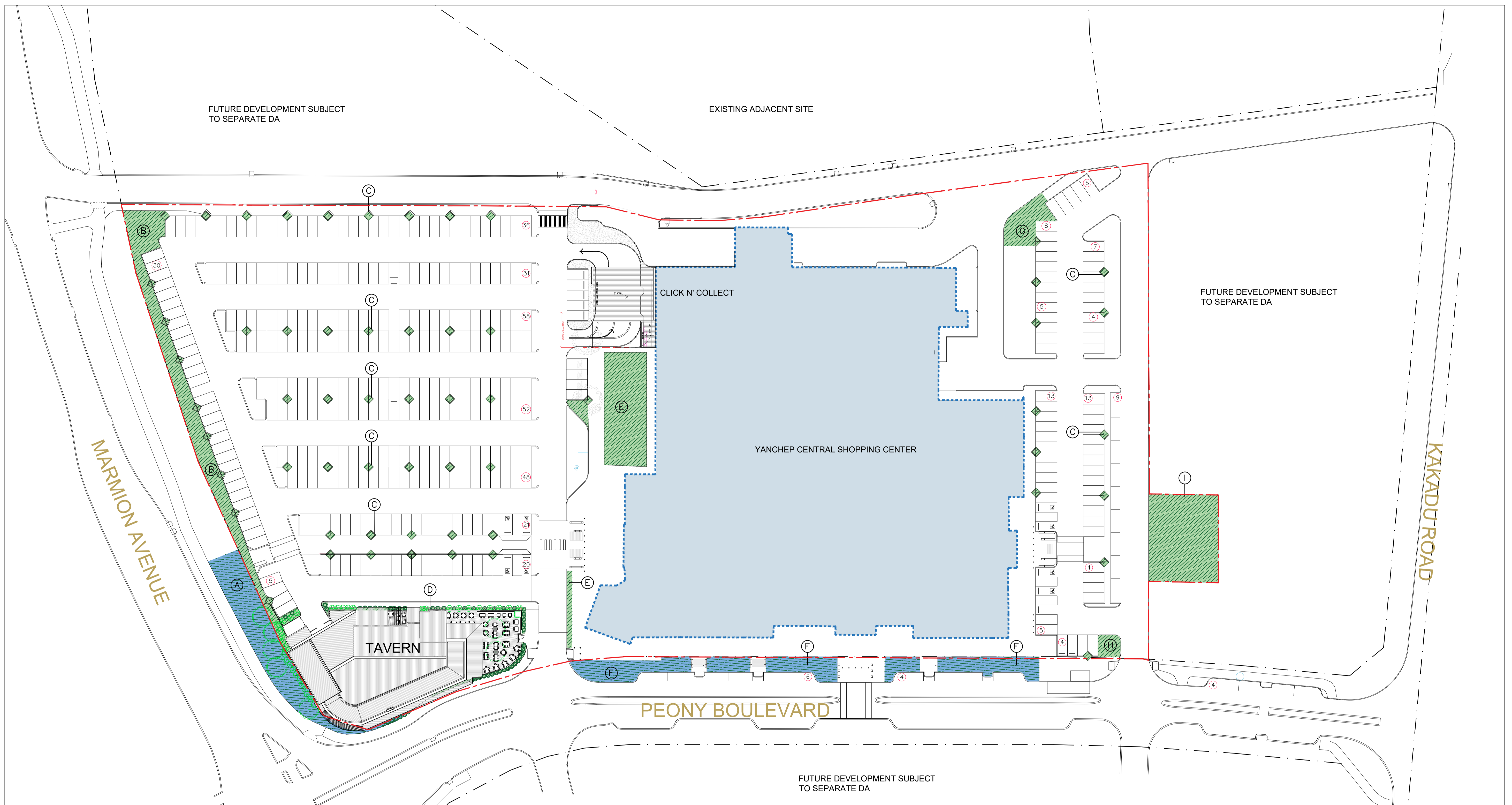


01 SITE PLAN – EXISTING LANDSCAPE @ YANCHEP CENTRAL SHOPPING CENTER  
SCALE 1:500 @ A1



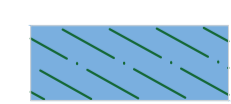
	AREA	%
 CALCULABLE SITE AREA:	29,500 m <sup>2</sup>	
 EXISTING LANDSCAPING (WITHIN SITE AREA)	1294.1m <sup>2</sup>	4.39 %
 EXISTING LANDSCAPING (INCLUDING OUTSIDE SITE AREA)	1715.3m <sup>2</sup>	5.81 %

EXISTING LANDSCAPING BREAKDOWN	
(B) MARMION AVE LANDSCAPE (INSIDE SITE AREA)	638.2m <sup>2</sup>
(C) CAR-BAY PLANTERS	168.5m <sup>2</sup>
(E) SHOPPING CENTER LANDSCAPE	361.7m <sup>2</sup>
(F) PEONY BOULEVARD LANDSCAPE (OUTSIDE SITE AREA)	421.2m <sup>2</sup>
(G) EAST CARPARK EXISTING LANDSCAPE	95.9m <sup>2</sup>
(H) EAST CARPARK EXISTING LANDSCAPE	29.8m <sup>2</sup>



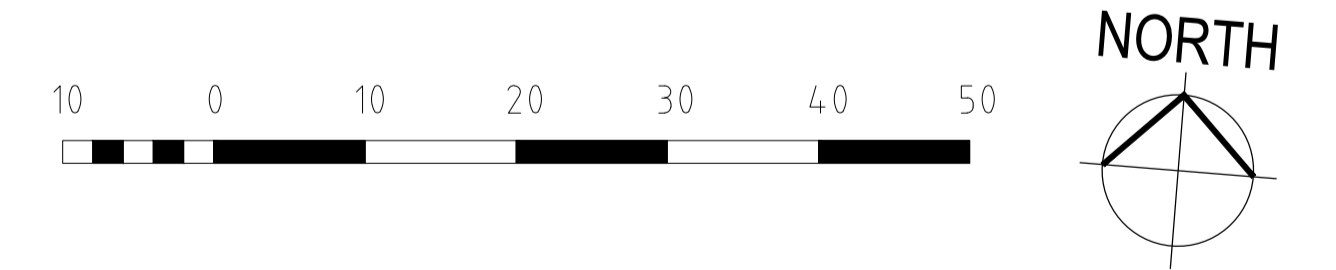
01 SITE PLAN – TAVERN @ YANCHEP CENTRAL SHOPPING CENTER  
SCALE 1:500 @ A1

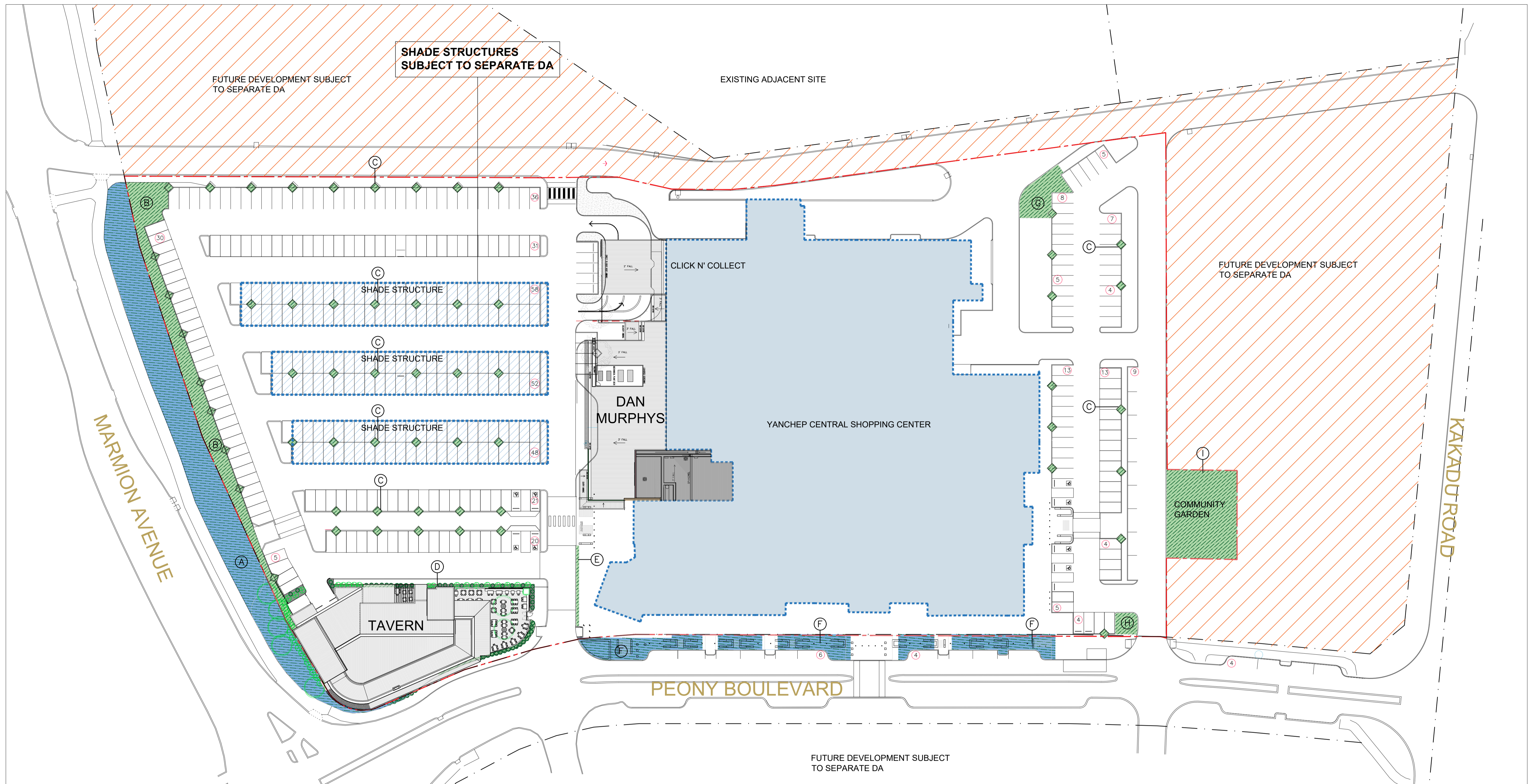
**NOTES:**  
 SITE AREA: 29,500m<sup>2</sup>  
 - ADDITIONAL TAVERN TRADING AREA: 1225m<sup>2</sup>  
 - PROPOSED CAR BAYS: 409  
 - EXISTING CAR BAYS: 439

	CALCULABLE SITE AREA :	29,500 m <sup>2</sup>	
	EXISTING LANDSCAPING (INCLUDING OUTSIDE SITE AREA)	1294.1m <sup>2</sup>	4.39 %
		1715.3m <sup>2</sup>	5.81 %
	PROPOSED LANDSCAPING - WITHIN SITE AREA	1555.6m <sup>2</sup>	5.27 %
	PROPOSED LANDSCAPING - (INCLUDING OUTSIDE SITE AREA)	2361.0m <sup>2</sup>	8.00 %

**PROPOSED LANDSCAPING BREAKDOWN**

(A) MARMION AVE LANDSCAPE (OUTSIDE SITE AREA)	384.2m <sup>2</sup>
(B) MARMION AVE LANDSCAPE (INSIDE SITE AREA)	444.0m <sup>2</sup>
(C) CAR-BAY PLANTERS	158.8m <sup>2</sup>
(D) TAVERN LANDSCAPING	65.4m <sup>2</sup>
(E) SHOPPING CENTER LANDSCAPE	361.7m <sup>2</sup>
(F) PEONY BOULEVARD LANDSCAPE (OUTSIDE SITE AREA)	421.2m <sup>2</sup>
(G) EAST CARPARK EXISTING LANDSCAPE	95.9m <sup>2</sup>
(H) EAST CARPARK EXISTING LANDSCAPE	29.8m <sup>2</sup>
(I) COMMUNITY GARDEN	400.0m <sup>2</sup>





01 SITE PLAN – TAVERN & DAN MURPHYS @ YANCHEP CENTRAL SHOPPING CENTER  
SCALE 1:500 @ A1

	AREA	%
CALCULABLE SITE AREA:	29,500 m <sup>2</sup>	
EXISTING LANDSCAPING (INCLUDING OUTSIDE SITE AREA)	1294.1m <sup>2</sup>	4.39 %
PROPOSED LANDSCAPING - WITHIN SITE AREA	1715.3m <sup>2</sup>	5.81 %
PROPOSED LANDSCAPING - WITHIN SITE AREA	1220.1m <sup>2</sup>	4.14 %
PROPOSED LANDSCAPING - (INCLUDING OUTSIDE SITE AREA)	2360m <sup>2</sup>	8.00 %

**PROPOSED LANDSCAPING BREAKDOWN**

(A) MARMION AVE LANDSCAPE (OUTSIDE SITE AREA)	718.7m <sup>2</sup>
(B) MARMION AVE LANDSCAPE (INSIDE SITE AREA)	444.0m <sup>2</sup>
(C) CAR-BAY PLANTERS	158.8m <sup>2</sup>
(D) TAVERN LANDSCAPING	65.4m <sup>2</sup>
(E) SHOPPING CENTER LANDSCAPE	26.2m <sup>2</sup>
(F) PEONY BOULEVARD LANDSCAPE (OUTSIDE SITE AREA)	421.2m <sup>2</sup>
(G) EAST CARPARK EXISTING LANDSCAPE	95.9m <sup>2</sup>
(H) EAST CARPARK EXISTING LANDSCAPE	29.8m <sup>2</sup>
(I) COMMUNITY GARDEN	400.0m <sup>2</sup>

CALCULABLE SITE AREA:	29,500 m <sup>2</sup>	<b>CAR PARKING SUMMARY</b>
SITE AREA EXCLUDED FROM CALCULABLE SITE AREA		SITE AREA WITH TAVERN & DAN MURPHYS
SHADE STRUCTURES (SUBJECT OF SEPARATE DA)		SITE AREA WITH TAVERN ONLY
		SITE AREA WITH DAN MURPHYS ONLY