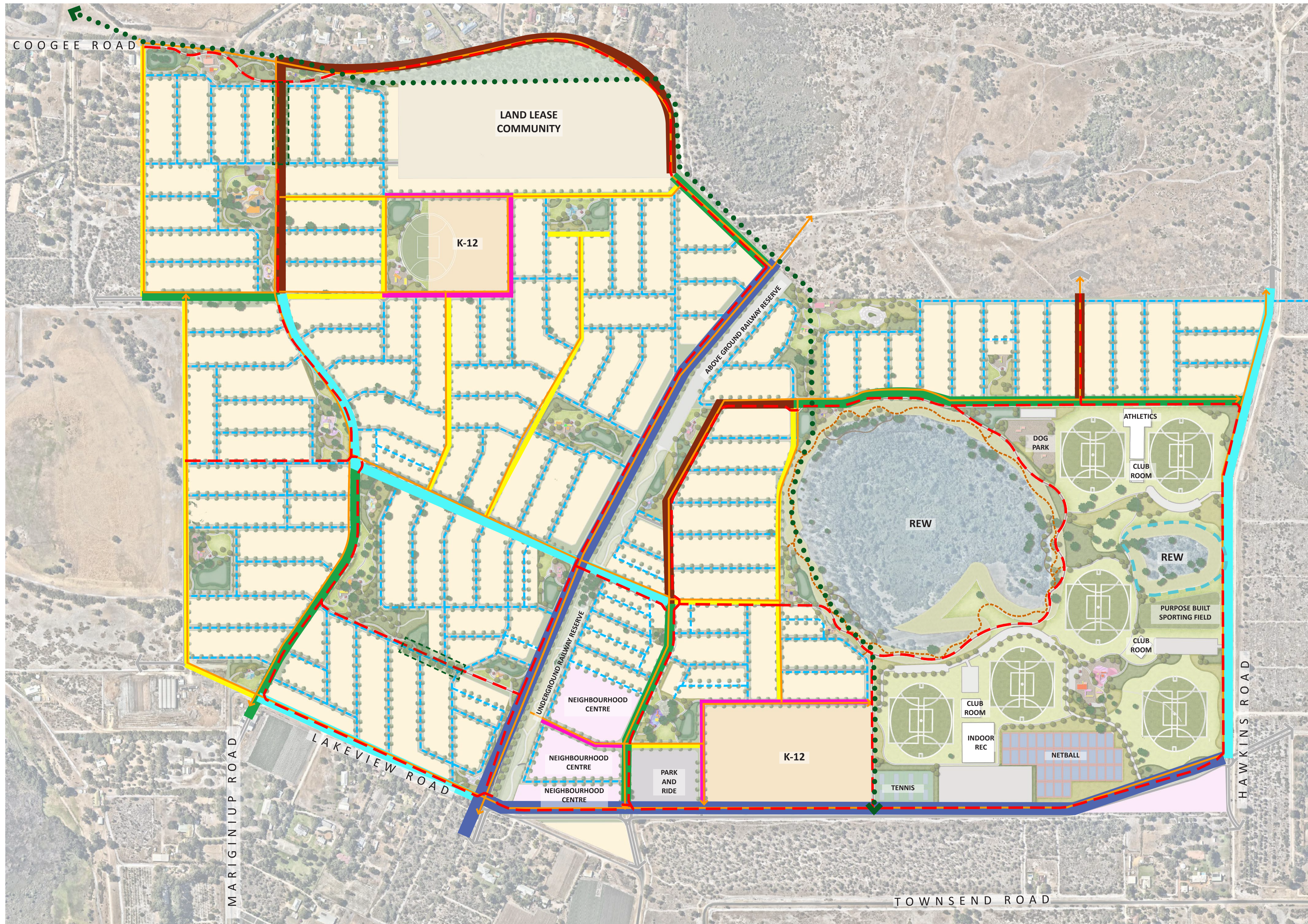


LEGEND

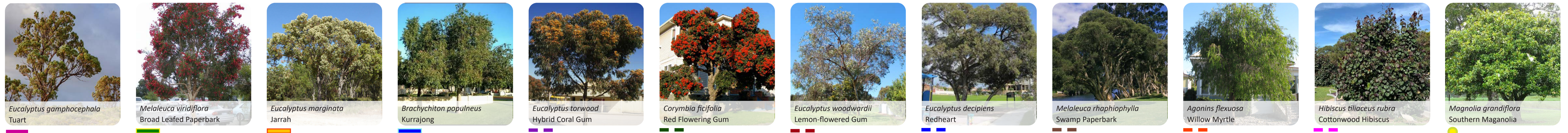
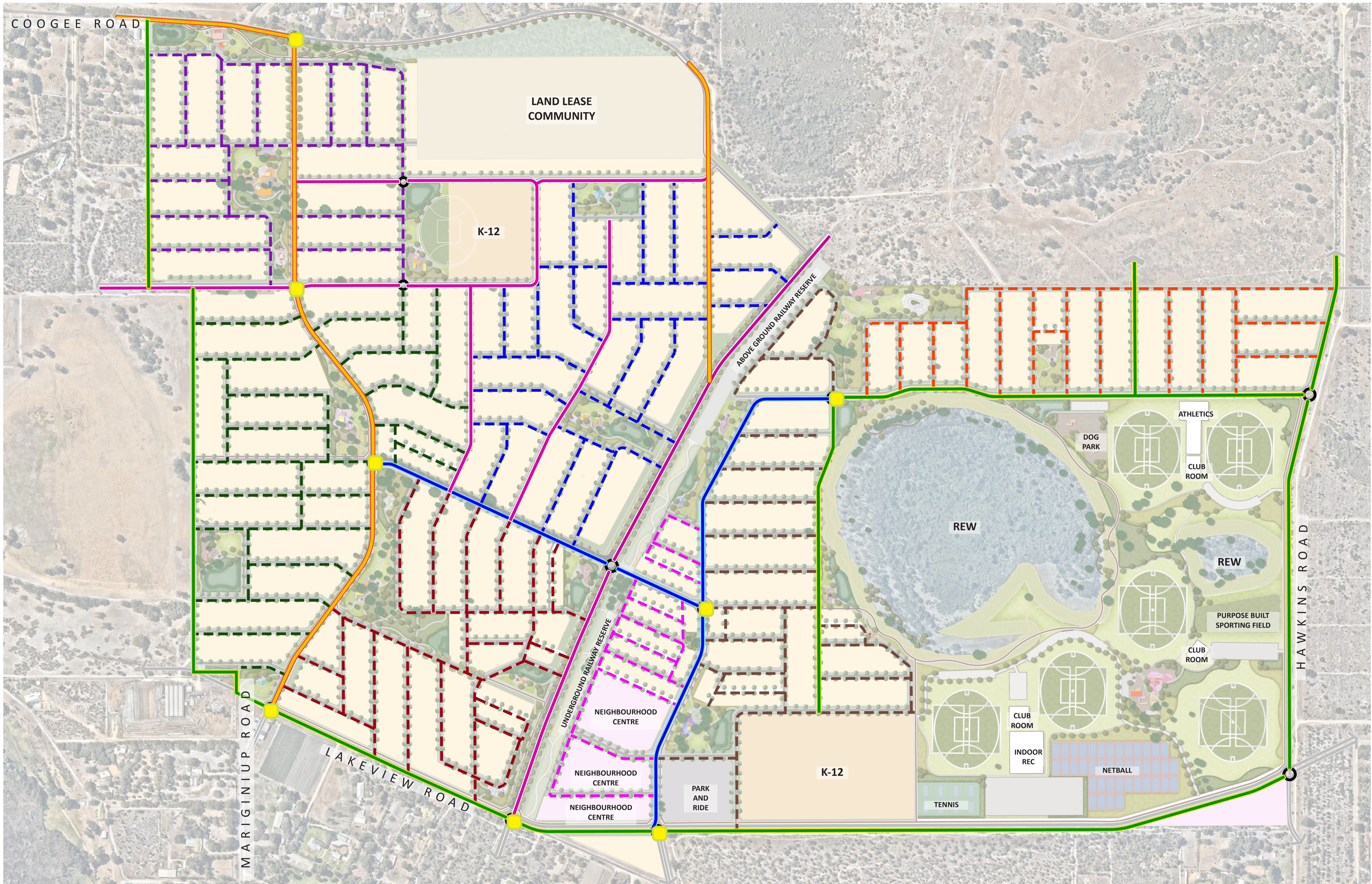
- EXISTING LARGE TREE
- OPEN TURF
- FITNESS AREA
- BOARDWALK
- BASIN & SWALES
- DUAL USE PATH
- PLAYING FIELD
- CARPARK
- PLAYGROUND
- PARK SHELTER
- BBQ
- PICNIC SETTING
- DOG PARK
- CRUSHED LIMESTONE TRACK
- DRINK FOUNTAIN
- BENCH SEAT
- BMX BIKE TRACK
- COMMUNITY GARDEN
- FUTURE TRAIN STATION
- TURF MOUND
- EXTENT OF WORK
- REW
- REW BUFFER
- CCW
- ENTRY SIGNAGE
- EXISTING TREES
- PROPOSED PLANTING
- PROPOSED TURF
- PROPOSED REVEGETATION/ UNIRRIGATED TUBESTOCK

REGIONAL SPORTING COMPLEX

- CRUSHED LIMESTONE TRACK
- DRINK FOUNTAIN
- BENCH SEAT
- BMX BIKE TRACK
- COMMUNITY GARDEN
- FUTURE TRAIN STATION
- TURF MOUND
- DOG PARK
- PICNIC SETTING
- BBQ
- PARK SHELTER
- PLAYGROUND
- FITNESS AREA
- EXISTING LARGE TREE
- OPEN TURF
- PLAYING FIELD
- BOARDWALK
- DUAL USE PATH

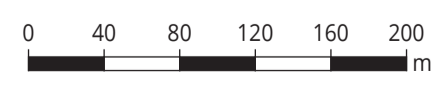


| LEGEND | |
|--------|---------------------------|
| | Road Integrator A |
| | Road Integrator B |
| | Neighbourhood Connector A |
| | Neighbourhood Connector A |
| | Access Street A |
| | Access Street B |
| | Access Street D |
| | Pedestrian Footpath |
| | Crushed limestone/trail |
| | Dual Use Path |
| | Parkland Link |
| | Green Street |



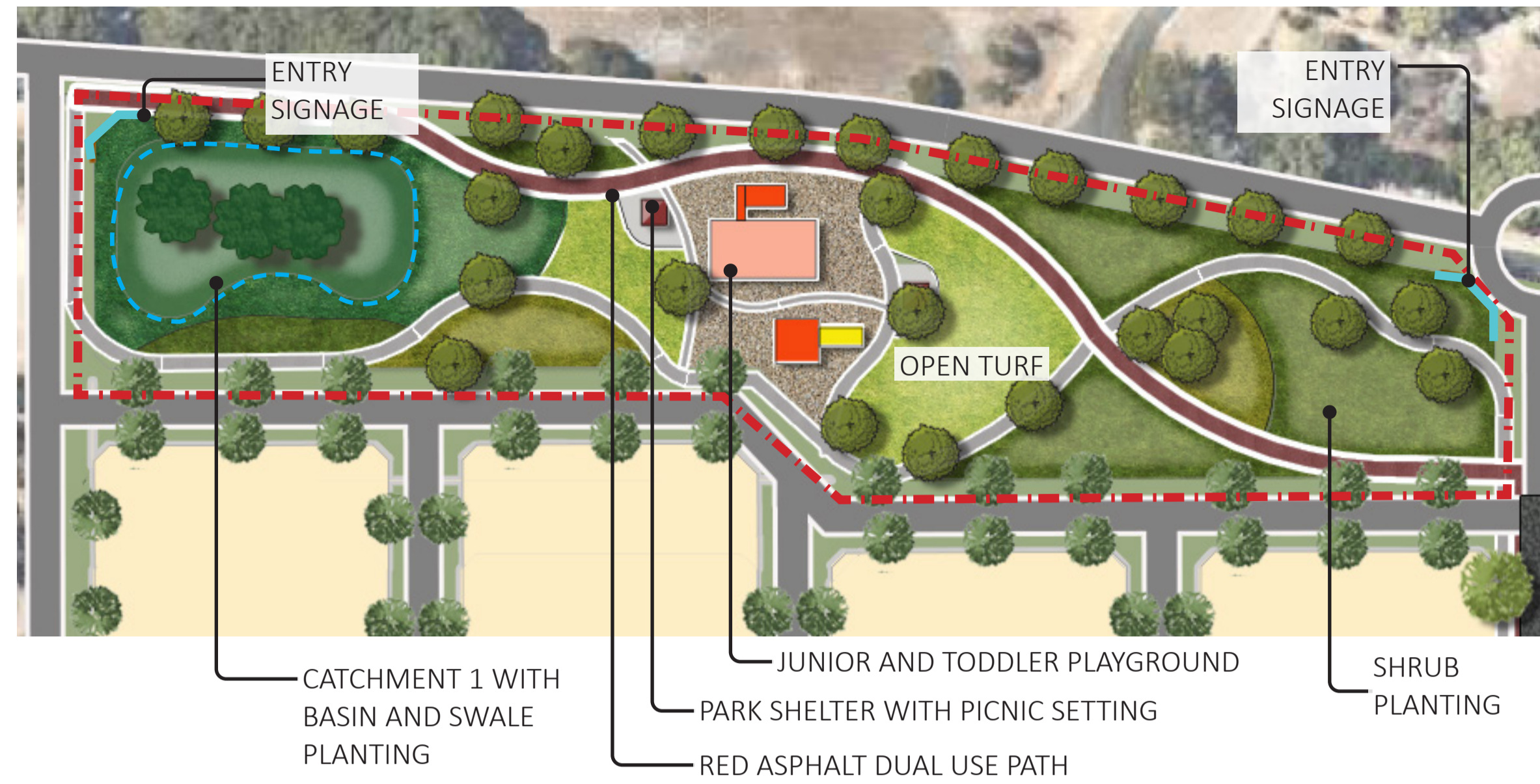
MARIGINIUP- Stockland
LANDSCAPE STREET TREE MASTERPLAN

DWG MAR01_DES
REV B
DATE 2023-08-09
SCALE 1:4000 @ A1
© THIS DRAWING CAN NOT BE PUBLISHED OR DISPLAYED WITHOUT THE WRITTEN PERMISSION OF THE CLIENT AND AUTHOR, AND IS ISSUED FOR INFORMATION PURPOSES ONLY AND MAY ALTER WITHOUT NOTIFICATION.



U:\CURRENT PROJECTS\Mariginiup - Stockland\02 Concept & Reports\01 CODE Title of works\Indd\MAR-Mariginiup.indd

POS 1 CONCEPT



DRAINAGE LEGEND - CATCHMENT 1

FIRST 15mm BRA DETAILS

| | |
|-----------------------------|------|
| Depth(m): | 0.30 |
| Base Area(m ²): | 1600 |
| Top Area(mAHD): | 1747 |
| Slope: | 1:3 |

POS TYPOLOGY

- Neighborhood Park

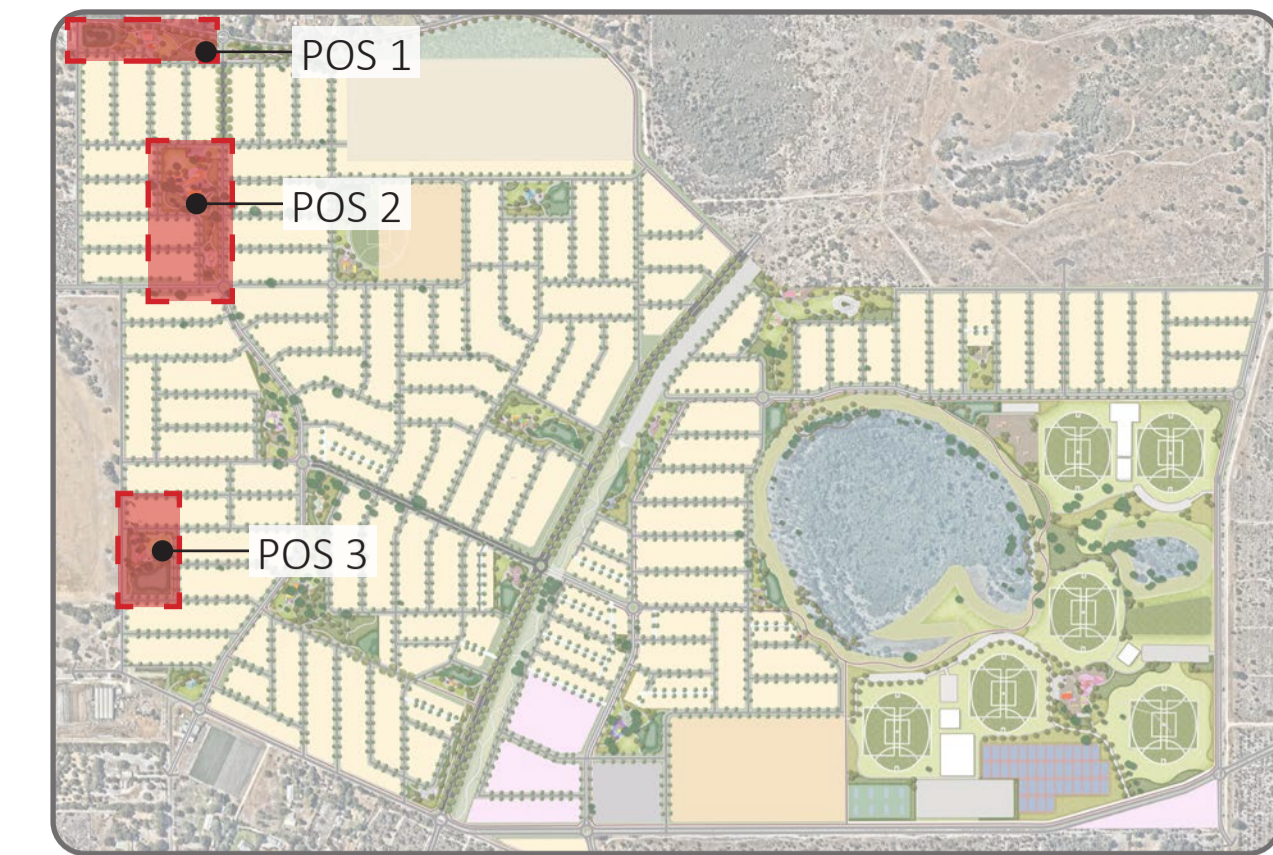
SIZE

- 1.43 ha + Verge

- CONCEPT**
- D.U.P on northern side of the POS to provide connection to road integrators
 - Existing trees to be retained
 - Shrub revegetation under existing vegetation
 - Provide a pedestrian link through estate
 - Significant trees to be retained where possible
 - Picnic area with shelter, picnic setting and BBQ area
 - Playground to provide activity space
 - Open turf to provide activity area to residents
 - Provide entry signage
 - Drainage basin as per LWMS

- ENVIRONMENTAL CONSIDERATIONS**
- Existing trees and vegetation to be retained where possible.
 - Low fuel planting to minimise the threat area intensity for bushfire prone areas
 - Water-wise native planting and planting
 - Source local materials where possible to minimise transport requirements and provide local employment.
 - Consider long-term maintenance requirements.
 - Provide a buffer to the adjacent road

- FUNCTIONS / MATERIALS**
- Existing trees to be retained
 - Open turf area for outdoor activity
 - Shelter with table settings and BBQ will provide opportunity for socialisation
 - Playground for kids
 - Connected path to open space perimeter, with connections to the broader path network.
 - Entry signage to convey directions and enhance the character of the estate



LOCATION PLAN



LEGEND

- TURF
- SHRUB PLANTING (AMENITY)
- LOW FUEL PLANTING
- BASIN
- LOT
- DUAL USE PATH
- FOOTPATH
- MULCH ONLY
- STREET TREES
- EXISTING TREES
- PROPOSED TREES
- CRUSHED LIMESTONE PATH
- BOARDWALK
- REVEGETATION
- EXTENT OF WORK
- REW
- REW BUFFER

POS 2 CONCEPT



POS TYPOLOGY

- Neighborhood Park

SIZE

- 2.02 ha + Verge

- CONCEPT**
- D.U.P on eastern side of the POS to provide connection to road integrators
 - Existing trees to be retained
 - Shrub revegetation under existing vegetation
 - Provide a pedestrian link through estate
 - Significant trees to be retained where possible
 - Picnic area with shelter, picnic setting and BBQ area
 - Playground to provide activity space
 - Open turf to provide activity area to residents
 - Provide fitness area for residents

- ENVIRONMENTAL CONSIDERATIONS**
- Existing trees and vegetation to be retained where possible.
 - Low fuel planting to minimise the threat area intensity for bushfire prone areas
 - Water-wise native planting and planting
 - Source local materials where possible to minimise transport requirements and provide local employment.
 - Consider long-term maintenance requirements.

- FUNCTIONS / MATERIALS**
- Existing trees to be retained
 - Open turf area for outdoor activity
 - Shelter with table settings and BBQ will provide opportunity for socialisation
 - Playground for kids
 - Connected path to open space perimeter, with connections to the broader path network.
 - Outdoor exercise area provide fitness opportunities for the residents

POS 3 CONCEPT



DRAINAGE LEGEND - CATCHMENT 3

FIRST 15mm BRA DETAILS

| | |
|-----------------------------|------|
| Depth(m): | 0.30 |
| Base Area(m ²): | 2500 |
| Top Area(mAHD): | 2683 |
| Slope: | 1:3 |

POS TYPOLOGY

- Neighborhood Park

SIZE

- 1.3 ha + Verge

- CONCEPT**
- Concrete footpath to provide connection to road integrators
 - Existing trees to be retained
 - Shrub revegetation under existing vegetation
 - Provide a pedestrian link through estate
 - Provide Dog park with agility equipment
 - Significant trees to be retained where possible
 - Picnic area with shelter and picnic setting
 - playground to provide activity space
 - Open turf to provide activity area to residents
 - Drainage basin as per LWMS

- ENVIRONMENTAL CONSIDERATIONS**
- Existing trees and vegetation to be retained where possible.
 - Low fuel planting to minimise the threat area intensity for bushfire prone areas
 - Water-wise native planting and planting
 - Source local materials where possible to minimise transport requirements and provide local employment.
 - Consider long-term maintenance requirements.
 - Provide a buffer to the adjacent road

- FUNCTIONS / MATERIALS**
- Existing trees to be retained
 - Open turf area for outdoor activity
 - Shelter and picnic settings
 - Nature Playground for kids
 - Dog park for Dog agility play opportunities for residents
 - Connected path to open space perimeter, with connections to the broader path network.

POS 6 CONCEPT



DRAINAGE LEGEND - CATCHMENT 6

FIRST 15mm BRA DETAILS

| | |
|-----------------------------|------|
| Depth(m): | 0.30 |
| Base Area(m ²): | 289 |
| Top Area(mAHD): | 353 |
| Slope | 1:3 |

POS TYPOLOGY

- Neighborhood Park

SIZE

- 2.94 ha + Verge

CONCEPT

- D.U.P on western side of the POS to provide connection to road integrators
- Existing trees to be retained
- Shrub revegetation under existing vegetation
- Provide a pedestrian link through estate
- Significant trees to be retained where possible
- Picnic area with shelter, picnic setting and BBQ area
- Playground to provide activity space
- Open turf to provide activity area to residents
- Provide fitness area
- Drainage basin as per LWMS

ENVIRONMENTAL CONSIDERATIONS

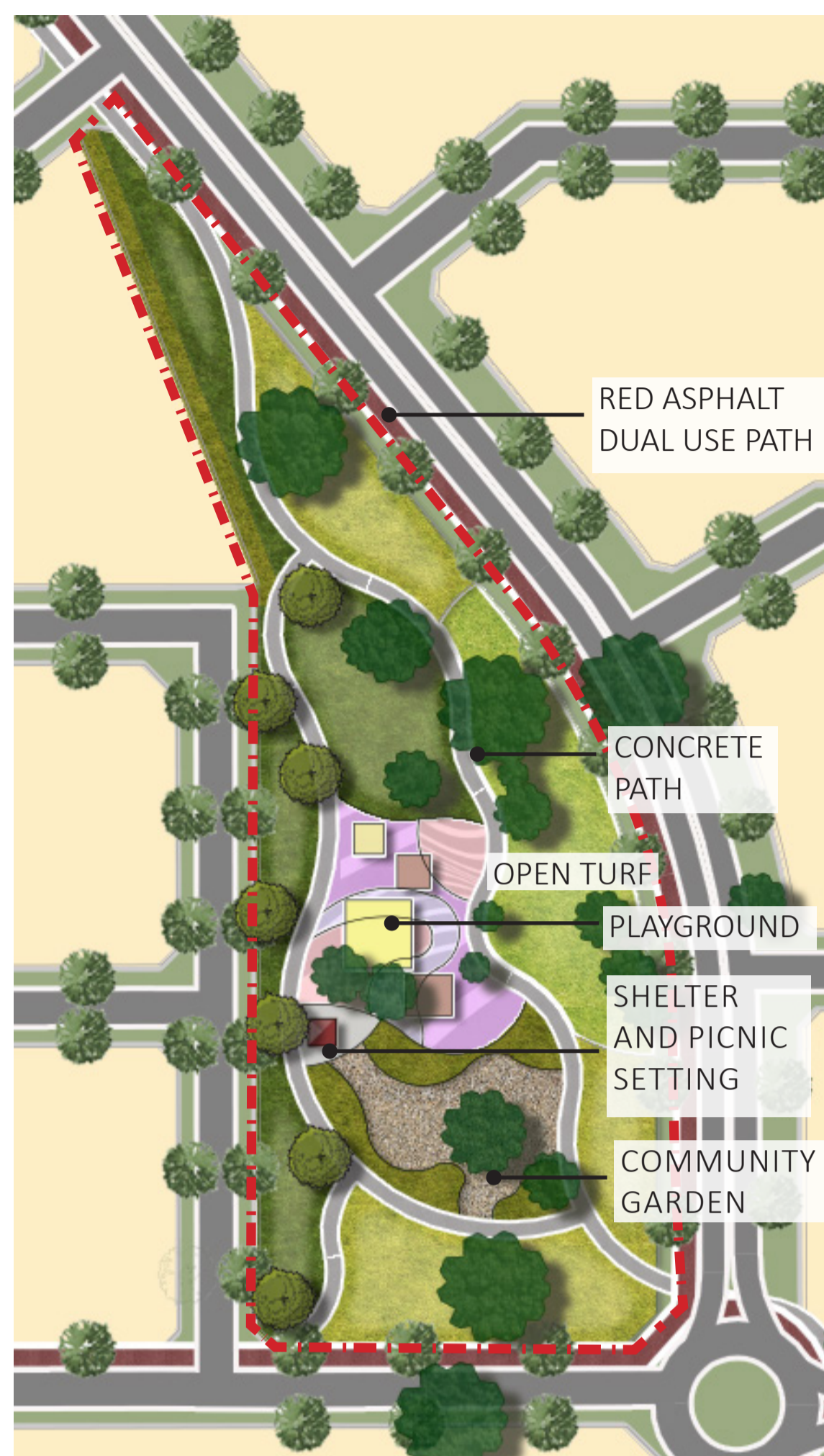
- Existing trees and vegetation to be retained where possible.
- Low fuel planting to minimise the threat area intensity for bushfire prone areas
- Water-wise native planting and planting
- Source local materials where possible to minimise transport requirements and provide local employment.
- Consider long-term maintenance requirements.
- Provide a buffer to the adjacent road

FUNCTIONS / MATERIALS

- Existing trees to be retained
- Open turf area for outdoor activity
- Shelter with table settings and BBQ will provide opportunity for socialisation
- Playground for kids
- Outdoor exercise area provide fitness oppotunities for the residents
- Connected path to open space perimeter, with connections to the broader path network.



POS 4 CONCEPT



POS TYPOLOGY

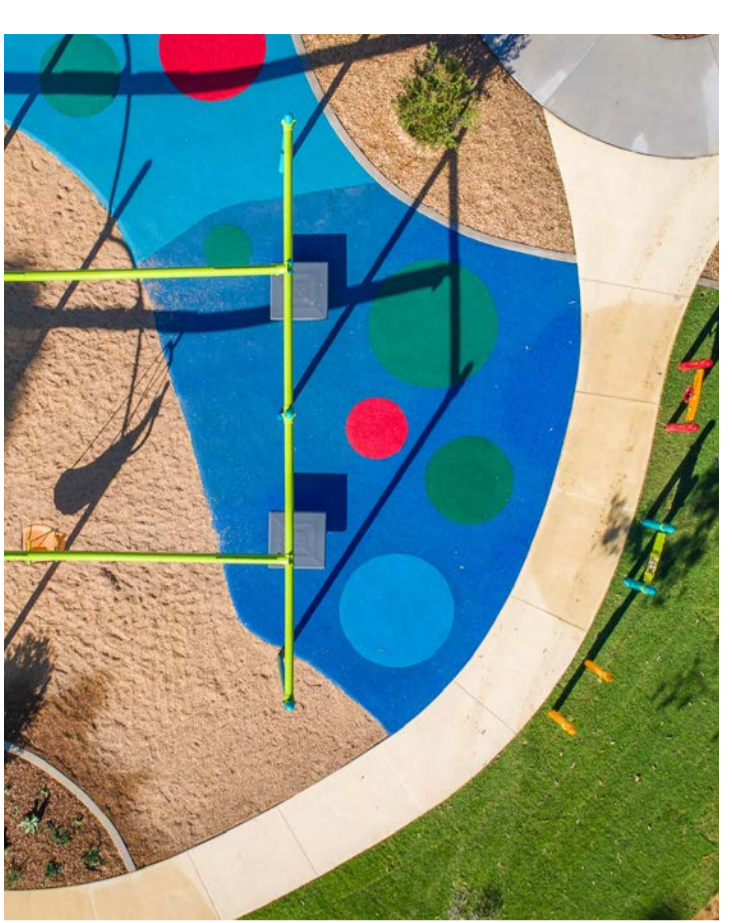
- Neighborhood Park

SIZE

- 1.13 ha + Verge

CONCEPT

- D.U.P on eastern side of the POS to provide connection to road integrators
- Existing trees to be retained
- Shrub vegetation under existing vegetation
- Provide a pedestrian link through estate
- Significant trees to be retained where possible
- Picnic area with shelter, picnic setting and BBQ area
- playground to provide activity space
- Open turf to provide activity area to residents
- Provide fitness area for residents

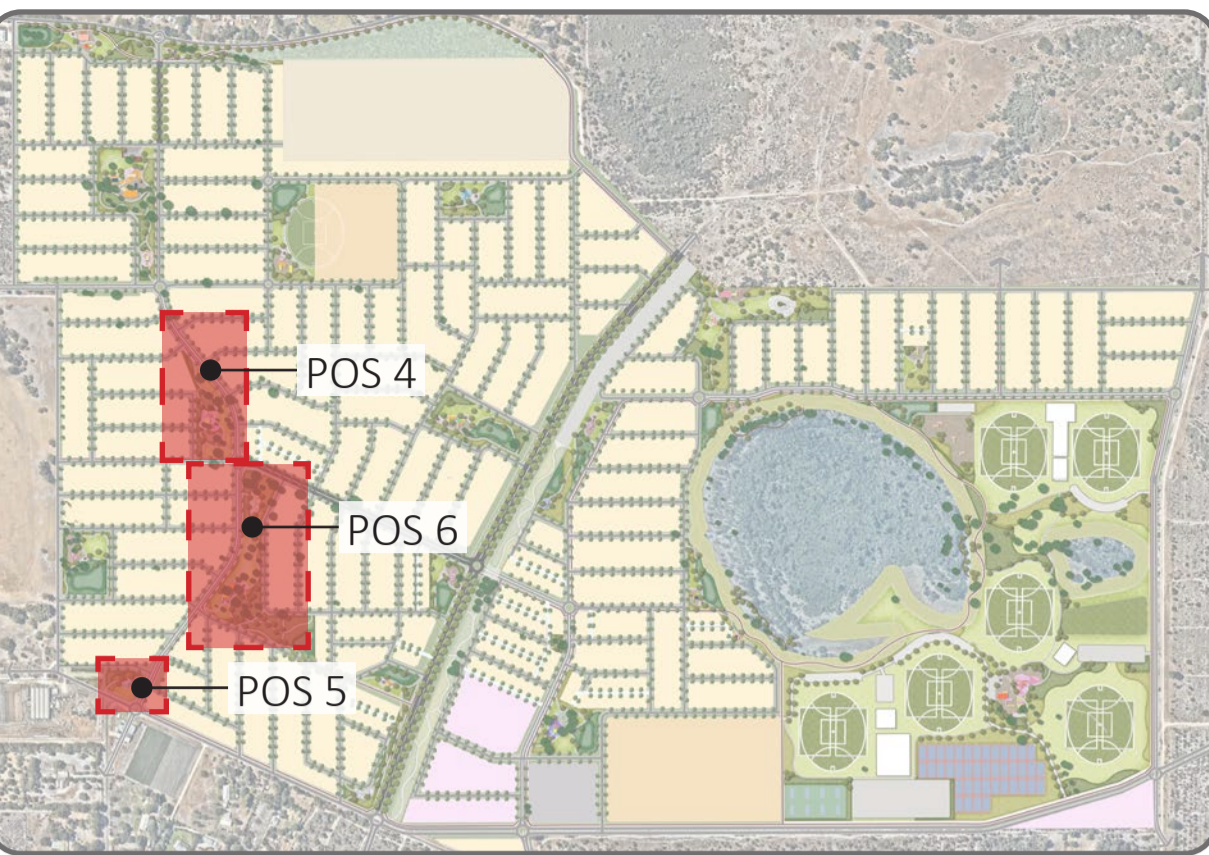


ENVIRONMENTAL CONSIDERATIONS

- Existing trees and vegetation to be retained where possible.
- Low fuel planting to minimise the threat area intensity for bushfire prone areas
- Water-wise native planting and planting
- Source local materials where possible to minimise transport requirements and provide local employment.
- Consider long-term maintenance requirements.

FUNCTIONS / MATERIALS

- Existing trees to be retained
- Open turf area for outdoor activity
- Shelter with table settings and BBQ will provide opportunity for socialisation
- Playground for kids
- Connected path to open space perimeter, with connections to the broader path network.
- Community garden with recycled materials to provide family activity opportunity for residents

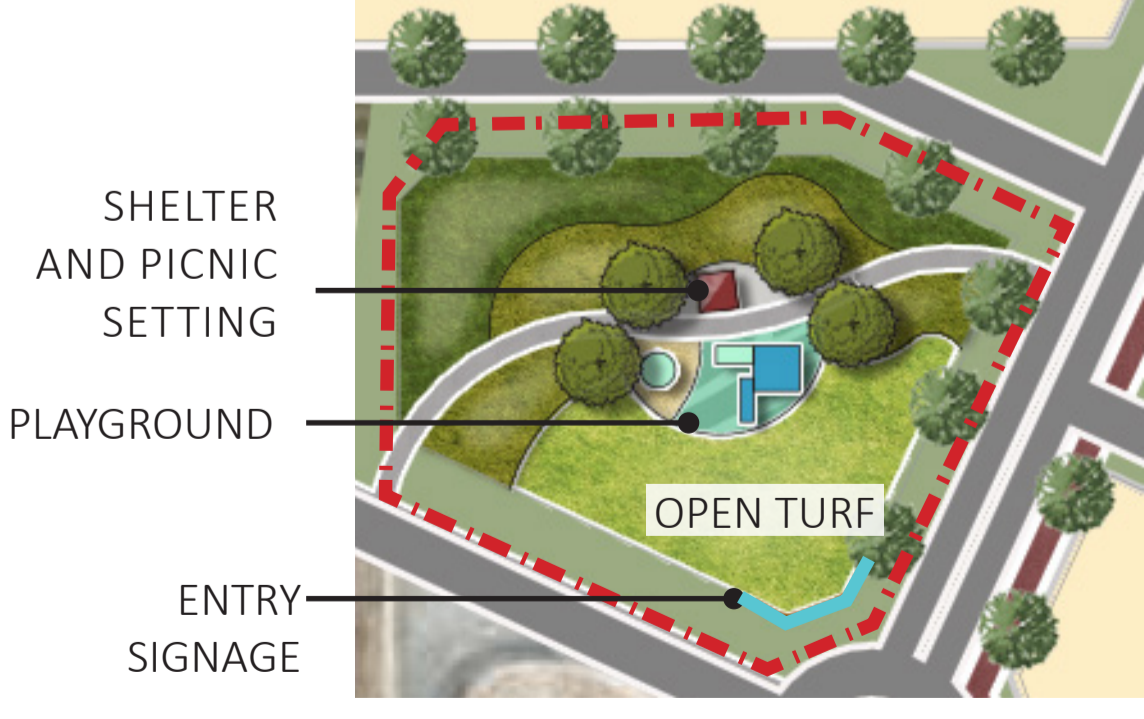


LOCATION PLAN

LEGEND

- TURF
- SHRUB PLANTING (AMENITY)
- LOW FUEL PLANTING
- BASIN
- LOT
- DUAL USE PATH
- FOOTPATH
- MULCH ONLY
- STREET TREES
- EXISTING TREES
- PROPOSED TREES
- CRUSHED LIMESTONE PATH
- BOARDWALK
- REVEGETATION
- EXTENT OF WORK
- REW
- REW BUFFER

POS 5 CONCEPT



POS TYPOLOGY

- Pocket Park

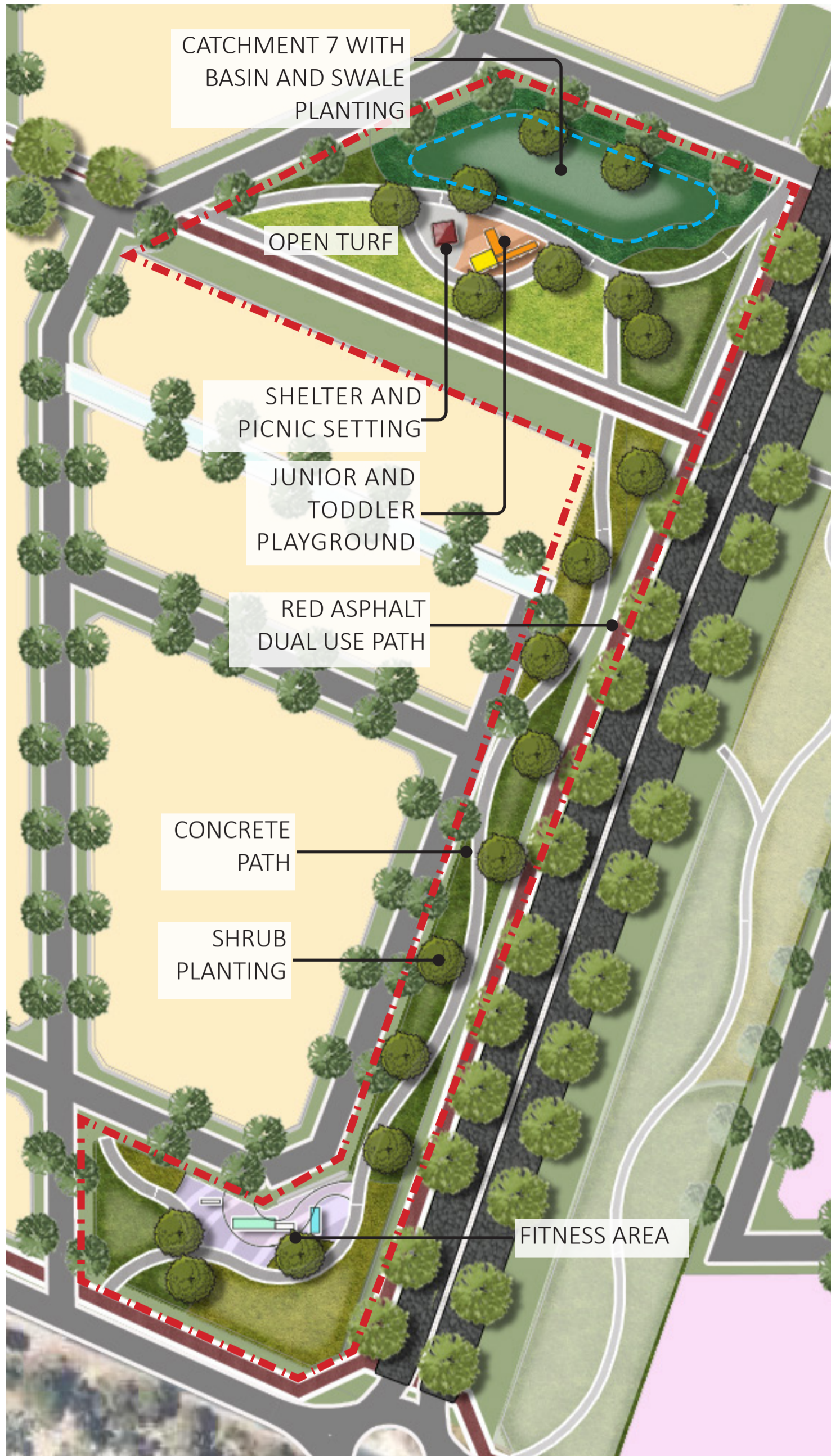
SIZE

- 3,658 m² + Verge

CONCEPT

- Playground for kids
- Shelter and picnic settings
- Plantings to provide buffer to external road
- Small turf area to provide open space
- Provide a pedestrian link through estate from the road
- Entry signage to convey directions and enhance the character of the estate

POS 7 CONCEPT



DRAINAGE LEGEND - CATCHMENT 7

| FIRST 15mm BRA DETAILS | |
|-----------------------------|------|
| Depth(m): | 0.30 |
| Base Area(m ²): | 961 |
| Top Area(mAHD): | 1076 |
| Slope | 1:3 |

POS TYPOLOGY

- Neighborhood Park
- SIZE**
- 1.17 ha + Verge

CONCEPT

- D.U.P most side of the POS to provide connection to road integrators
- Shrub vegetation to provide buffer along main integrator
- Provide a pedestrian link through estate
- Picnic area with shelter and picnic setting
- playground to provide activity space
- Open turf to provide activity area to residents
- Provide fitness area for residents
- Drainage basin as per LWMS

ENVIRONMENTAL CONSIDERATIONS

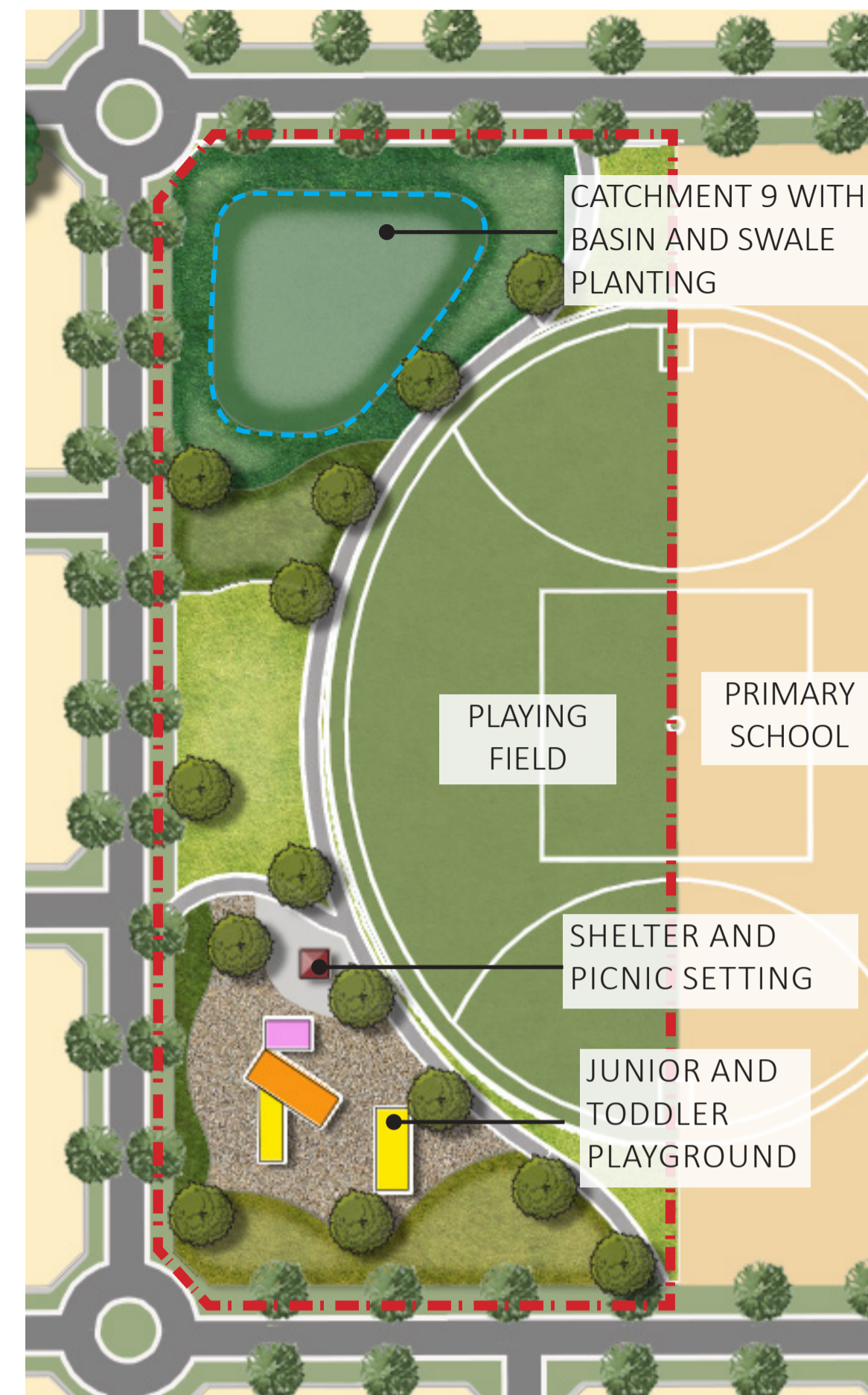
- Low fuel planting to minimise the threat area intensity for bushfire prone areas
- Water-wise native planting and planting
- Source local materials where possible to minimise transport requirements and provide local employment.
- Consider long-term maintenance requirements.
- Provide a buffer to the adjacent road

FUNCTIONS / MATERIALS

- Open turf area for outdoor activity
- Shelter and picnic settings
- Playground for kids
- Fitness area for residents
- Connected path to open space perimeter, with connections to the broader path network and DUP
- Outdoor exercise area provide fitness opportunities for the residents



POS 9 CONCEPT



DRAINAGE LEGEND - CATCHMENT 9

| FIRST 15mm BRA DETAILS | |
|-----------------------------|------|
| Depth(m): | 0.30 |
| Base Area(m ²): | 1521 |
| Top Area(mAHD): | 1665 |
| Slope | 1:3 |

POS 8 CONCEPT



DRAINAGE LEGEND - CATCHMENT 8

| FIRST 15mm BRA DETAILS | |
|-----------------------------|------|
| Depth(m): | 0.30 |
| Base Area(m ²): | 1024 |
| Top Area(mAHD): | 1142 |
| Slope | 1:3 |



POS TYPOLOGY

- Neighbourhood Park
- SIZE**
- 1.81 ha + Verge

CONCEPT

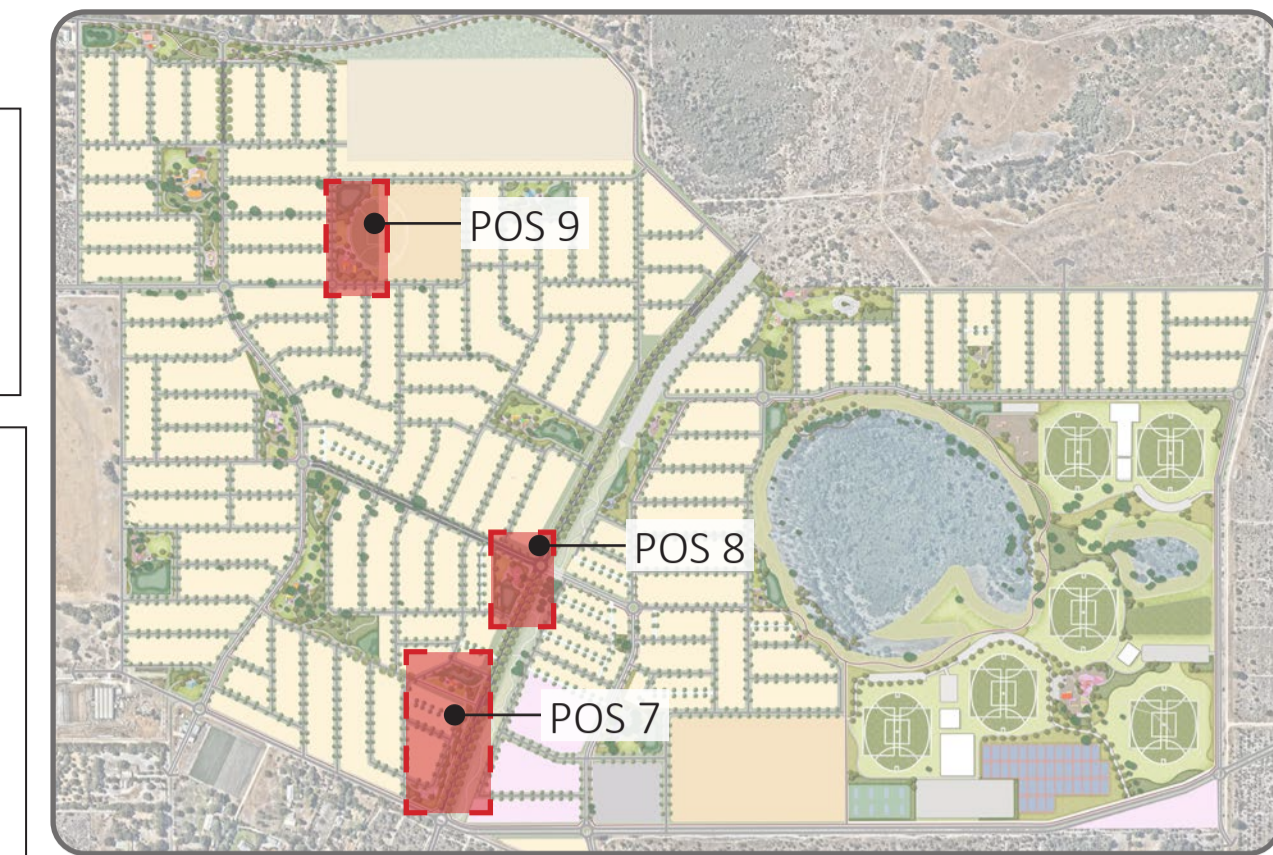
- Concrete footpath to provide connection to road integrators
- Picnic area with shelter, picnic setting and BBQ area
- playground to provide activity space
- Open turf to provide activity area
- Provide Playing field to share with Primary School
- Drainage basin as per LWMS

ENVIRONMENTAL CONSIDERATIONS

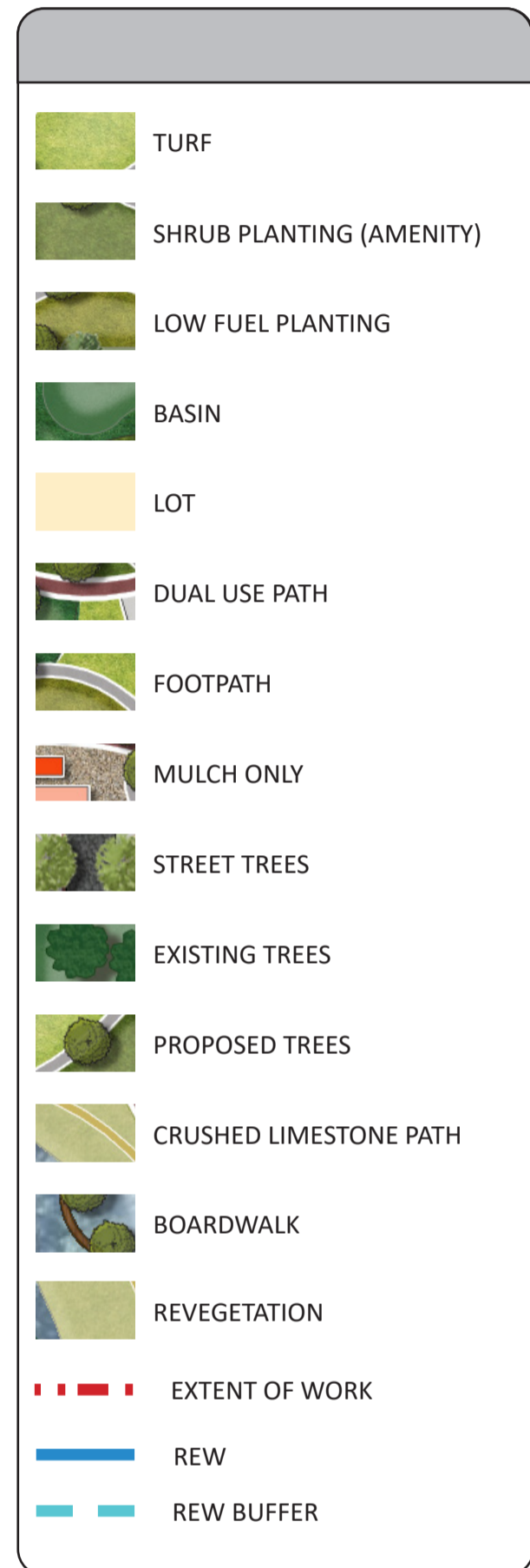
- Low fuel planting to minimise the threat area intensity for bushfire prone areas
- Water-wise native planting and planting
- Source local materials where possible to minimise transport requirements and provide local employment.
- Consider long-term maintenance requirements.
- Provide a buffer to the adjacent road

FUNCTIONS / MATERIALS

- Open turf area for playing field and outdoor activity
- Shelter with table settings and BBQ will provide opportunity for socialisation
- Playground for kids
- Connected path to open space



LOCATION PLAN



CONCEPT

- Concrete footpath to provide connection to road integrators and DUP
- Picnic area with shelter and picnic setting
- playground to provide activity space
- Open turf to provide activity area
- Significant trees to be retained where possible
- Drainage basin as per LWMS

FUNCTIONS / MATERIALS

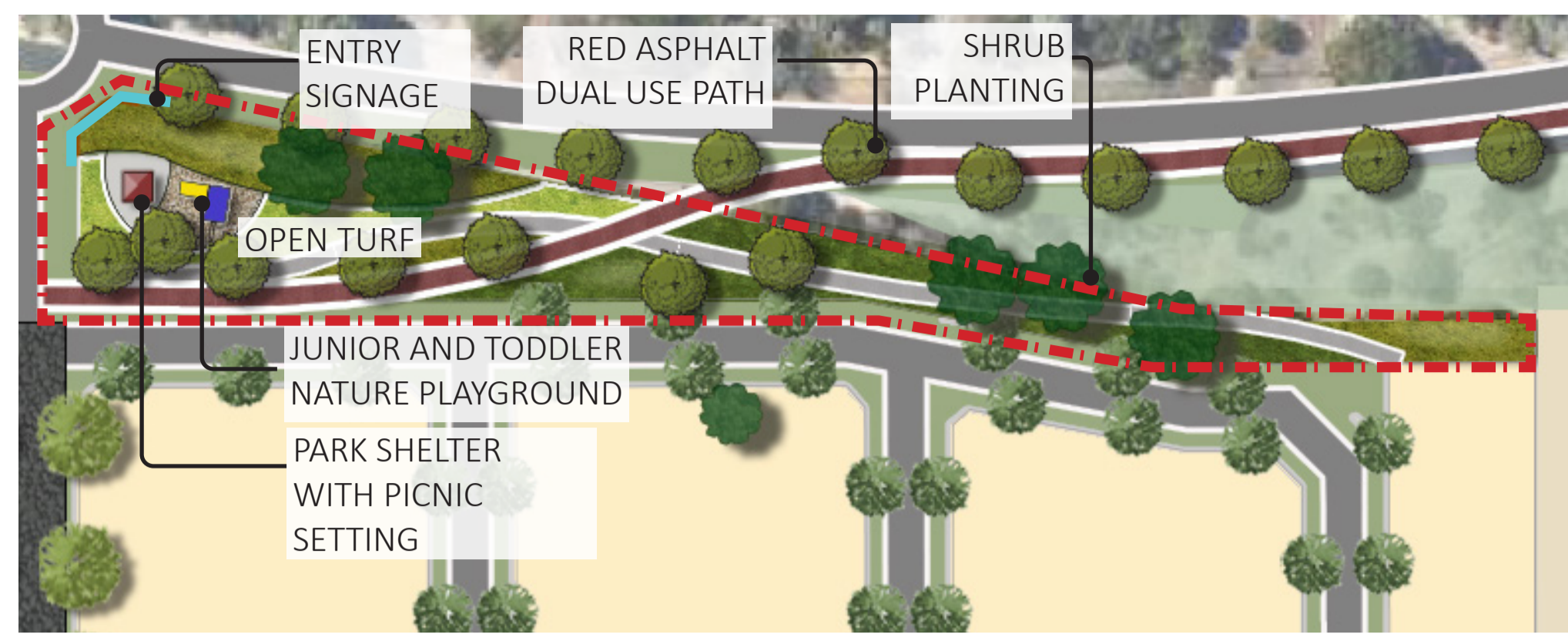
- Open turf area for playing field and outdoor activity
- Shelter and picnic settings
- Playground for kids
- Connected path to open space

ENVIRONMENTAL CONSIDERATIONS

- Low fuel planting to minimise the threat area intensity for bushfire prone areas
- Water-wise native planting and planting
- Source local materials where possible to minimise transport requirements and provide local employment.
- Consider long-term maintenance requirements.
- Provide a buffer to the adjacent road



POS 10 CONCEPT



POS TYPOLOGY

- Pocket Park
- SIZE**
- .4231 ha + Verge

CONCEPT

- D.U.P on northern side of the POS to provide connection to road integrators
- Shrub vegetation to provide buffer along main integrator
- Provide a pedestrian link through estate
- Significant trees to be retained where possible
- Picnic area with shelter and picnic setting
- playground to provide activity space
- Open turf to provide activity area to residents
- Provide entry signage

ENVIRONMENTAL CONSIDERATIONS

- Existing trees and vegetation to be retained where possible.
- Low fuel planting to minimise the threat area intensity for bushfire prone areas
- Water-wise native planting and planting
- Source local materials where possible to minimise transport requirements and provide local employment.
- Consider long-term maintenance requirements.
- Provide a buffer to the adjacent road

FUNCTIONS / MATERIALS

- Existing trees to be retained
- Open turf area for outdoor activity
- Shelter and picnic settings
- Playground for kids
- Entry signage to convey directions and enhance the character of the estate
- Connected path to open space perimeter, with connections to the broader path network.



POS 13 CONCEPT

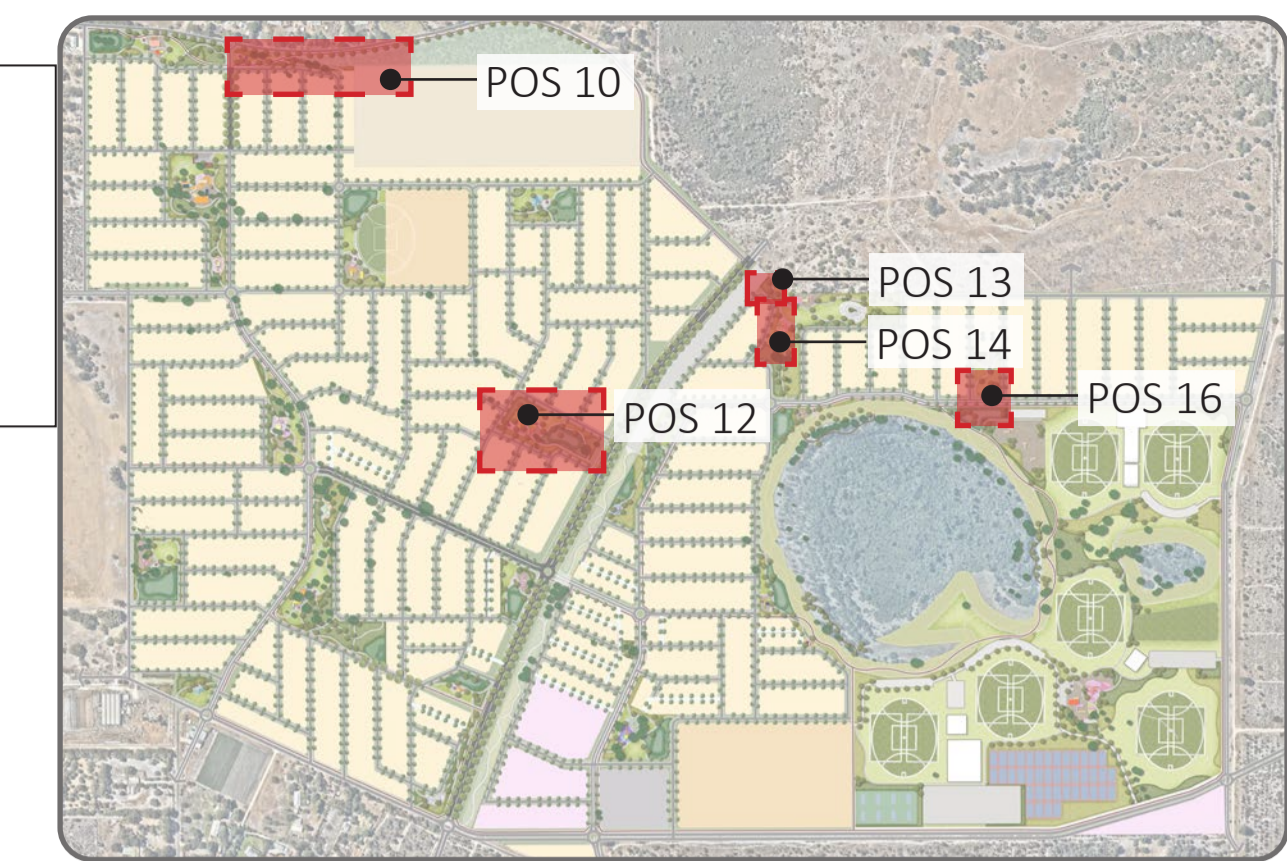


POS TYPOLOGY

- Pocket Park
- SIZE**
- 1,488 m² + Verge

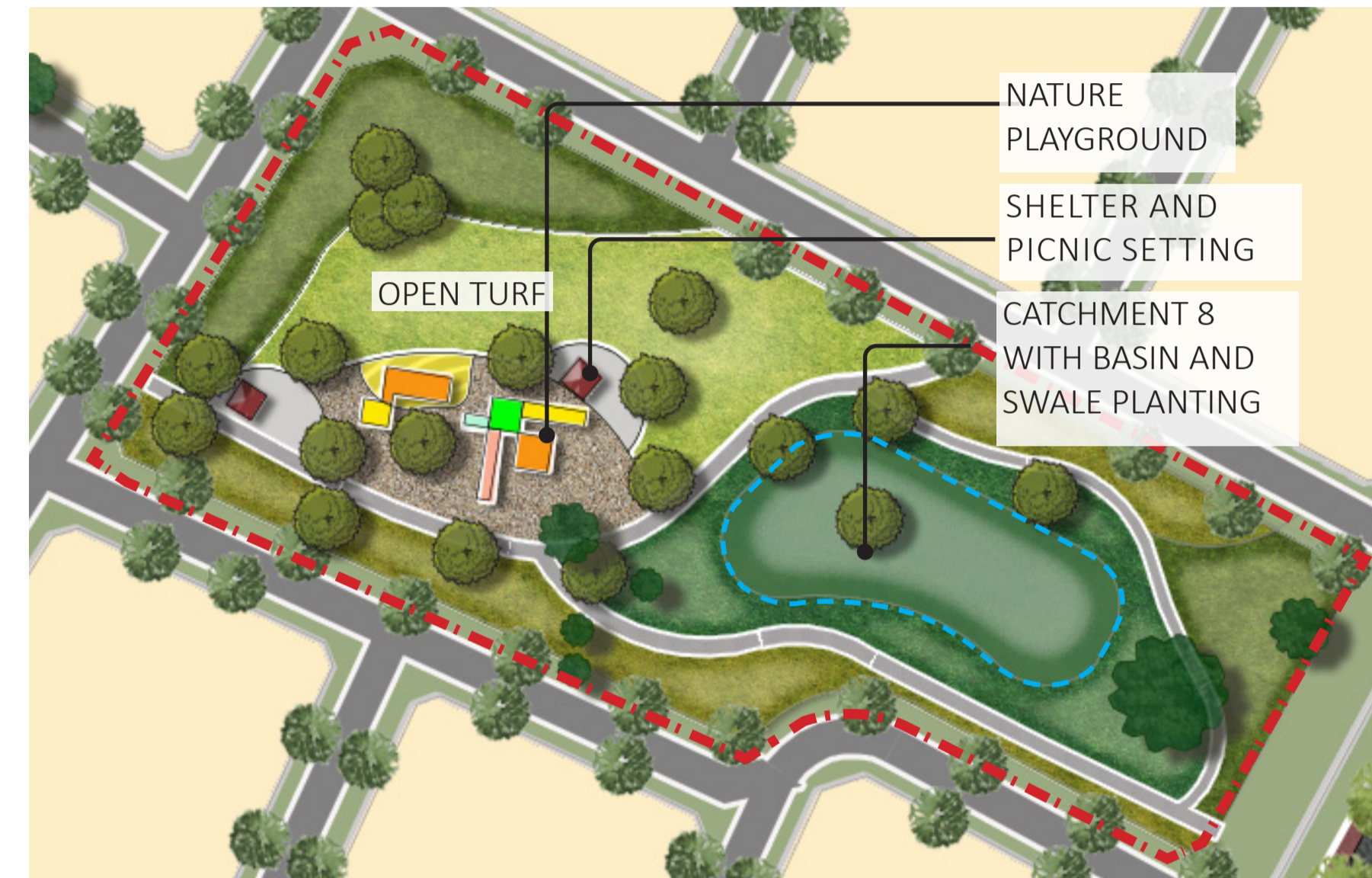
CONCEPT

- Plantings to provide buffer to external road
- Provide a pedestrian link through estate and



LOCATION PLAN

POS 12 CONCEPT



DRAINAGE LEGEND - CATCHMENT 12

| FIRST 15mm BRA DETAILS | |
|-----------------------------|------|
| Depth(m): | 0.30 |
| Base Area(m ²): | 1521 |
| Top Area(mAHD): | 1665 |
| Slope | 1:3 |

POS TYPOLOGY

- Neighborhood Park
- SIZE**
- 1.4 ha + Verge

CONCEPT

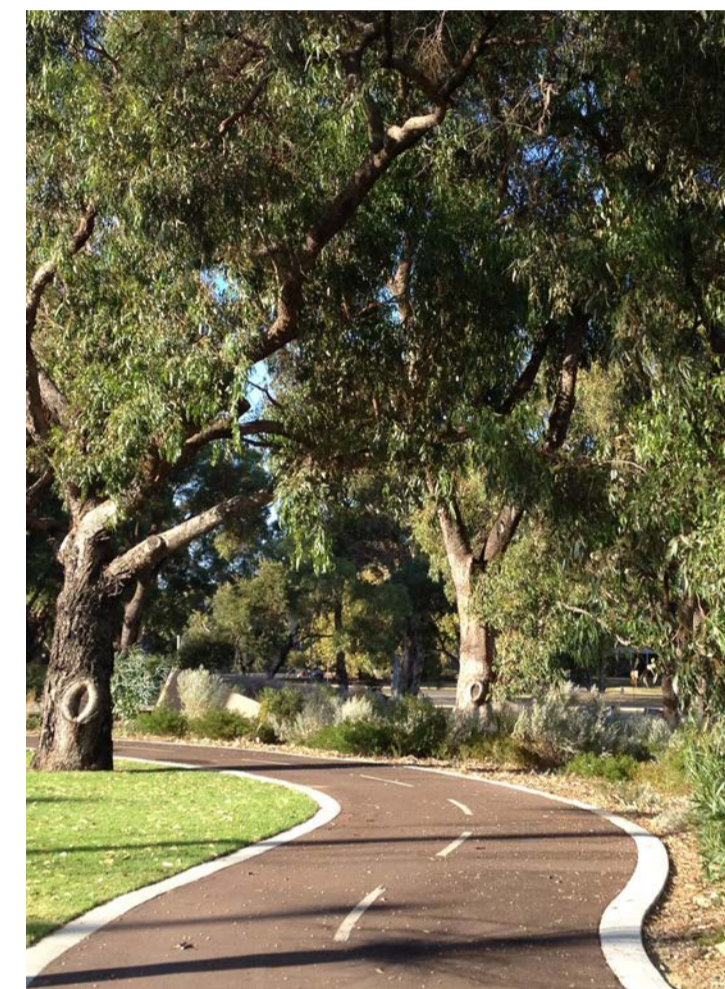
- D.U.P near eastern side of the POS to provide connection to road integrators
- Significant trees to be retained where possible
- Shrub vegetation
- Provide a pedestrian link through estate
- Picnic area with shelter, picnic setting and BBQ area
- All ages playground to provide activity space
- Open turf to provide activity area to residents
- Drainage basin as per LWMS

ENVIRONMENTAL CONSIDERATIONS

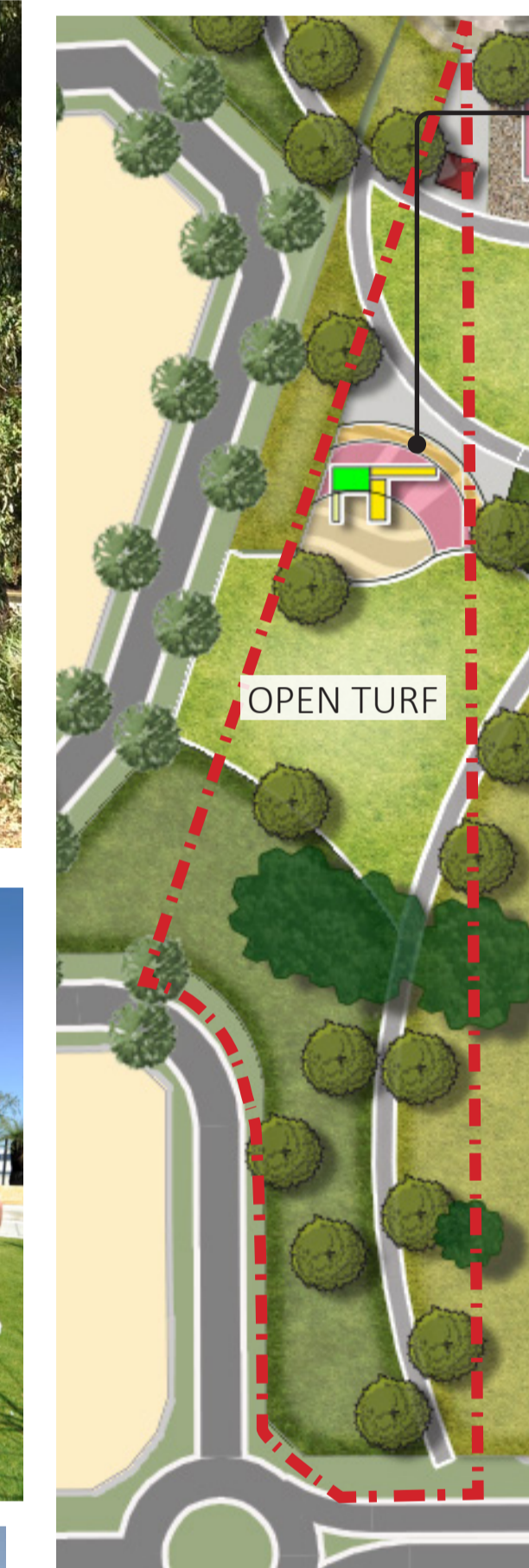
- Existing trees and vegetation to be retained where possible.
- Low fuel planting to minimise the threat area intensity for bushfire prone areas
- Water-wise native planting and planting
- Source local materials where possible to minimise transport requirements and provide local employment.
- Consider long-term maintenance requirements.
- Provide a buffer to the adjacent road

FUNCTIONS / MATERIALS

- Existing trees to be retained
- Open turf area for outdoor activity
- Shelter with table settings and BBQ will provide opportunity for socialisation
- Playground for all ages
- Connected path to open space with connections to the broader path



POS 14 CONCEPT



FITNESS AREA

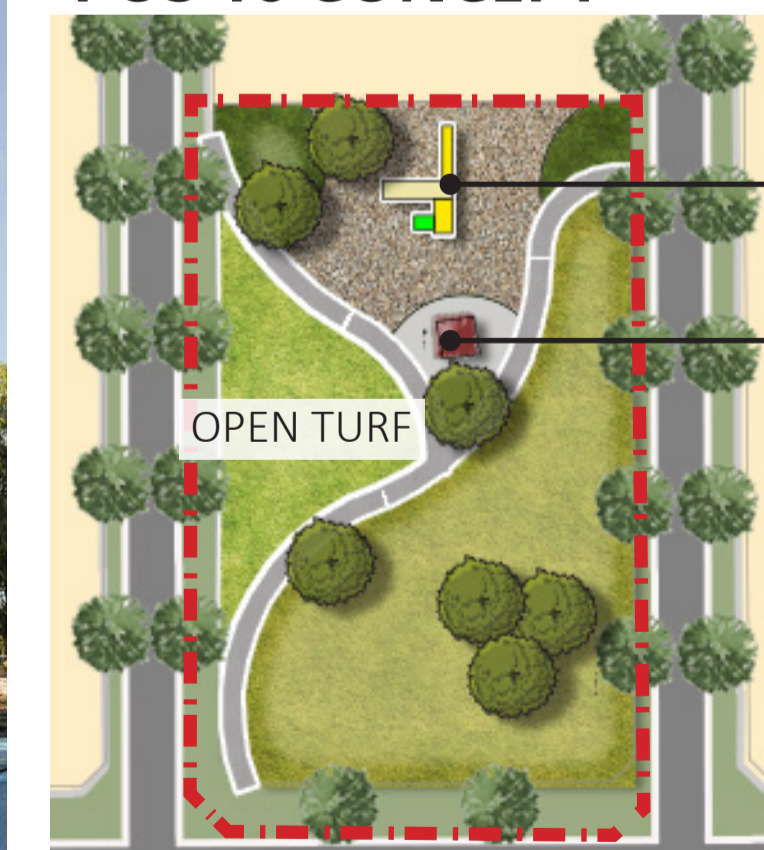
POS TYPOLOGY

- Local Park
- SIZE**
- 5,686 m² + Verge

CONCEPT

- Shelter and picnic settings
- Plantings to provide buffer to external road
- Small turf area to be part of connecting POS turf area to provide a wider open space
- Significant trees to be retained where possible
- Outdoor exercise area provide fitness opportunities for the residents
- Provide a pedestrian link through estate from the road through connecting POS

POS 16 CONCEPT



JUNIOR AND TODDLER PLAYGROUND

PARK SHELTER WITH PICNIC SETTING

POS TYPOLOGY

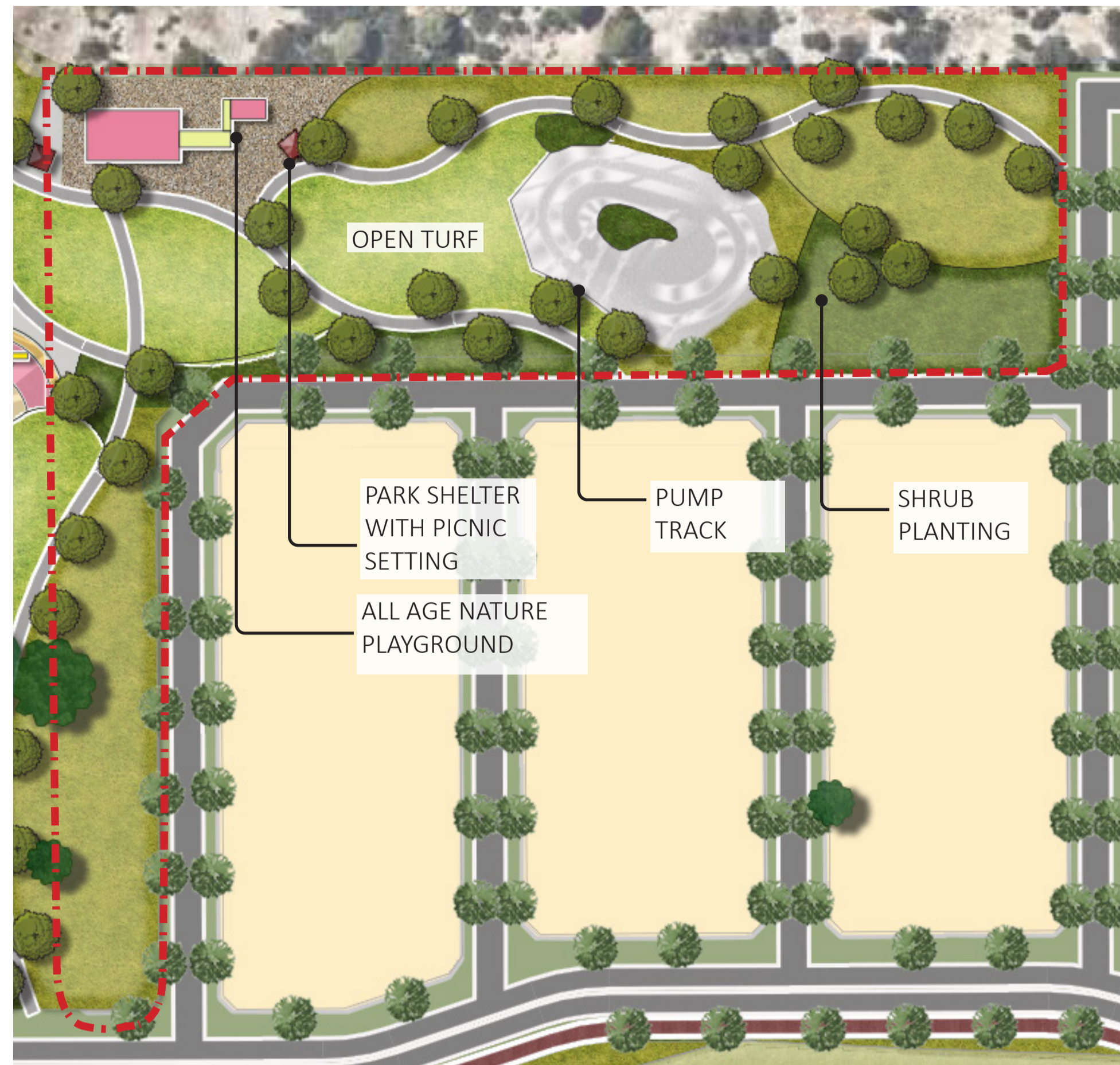
- Pocket Park
- SIZE**
- 4,941 m² + Verge

CONCEPT

- Plantings to provide buffer to external road
- Small Playground for kids
- Provide a pedestrian link through estate and from the road
- Drainage basin as per LWMS



POS 15 CONCEPT



POS TYPOLOGY

- Neighbourhood Park

SIZE

- 1.92 ha + Verge

CONCEPT

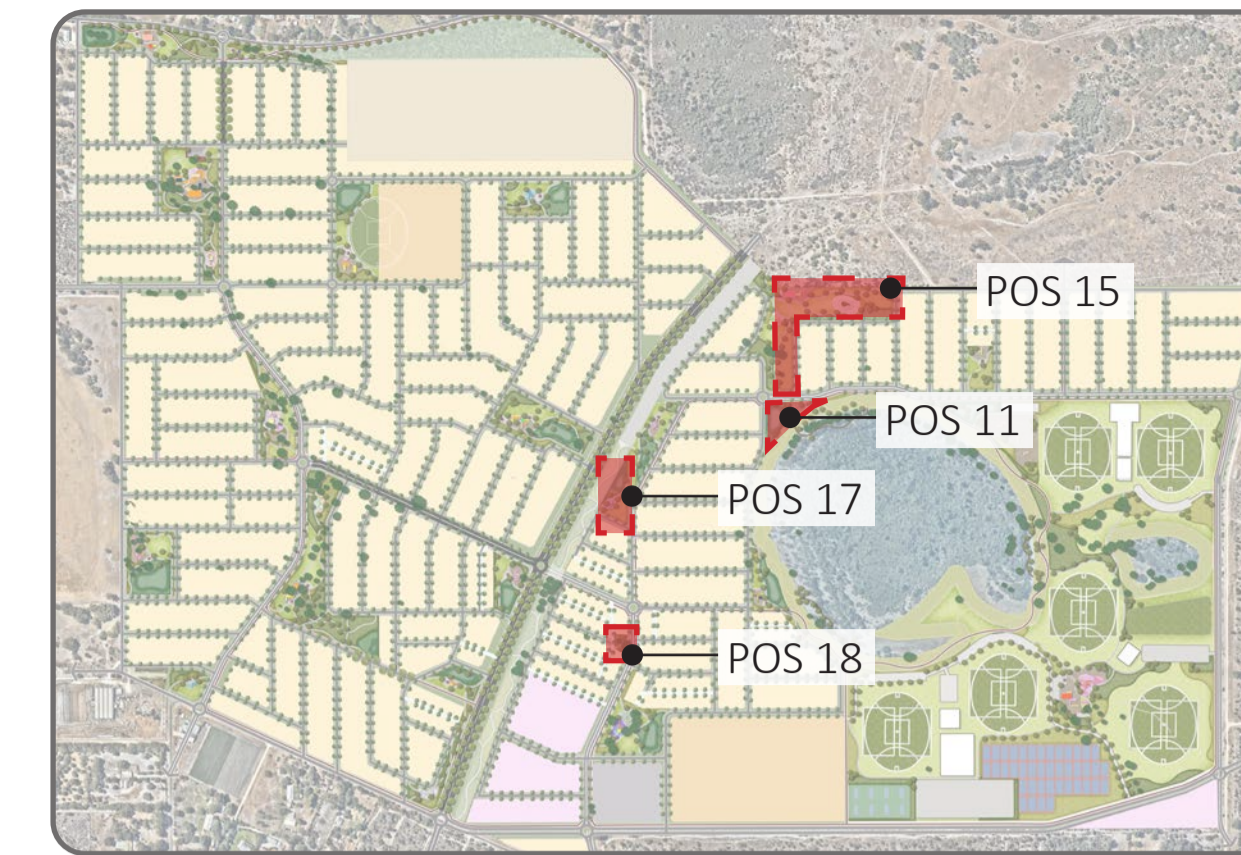
- Concrete footpath to provide a pedestrian link through estate and connecting the POS to road integrators
- Shrub vegetation to provide as a buffer to adjacent road
- Picnic area with shelter, picnic setting and BBQ area
- All ages playground to provide activity space
- Provide pump track
- Open turf to provide activity area to residents
- Turf mounding to create a unique landscape topography
- Drainage basin as per LWMS

ENVIRONMENTAL CONSIDERATIONS

- Existing trees and vegetation to be retained where possible.
- Low fuel planting to minimise the threat area intensity for bushfire prone areas
- Water-wise native planting and planting
- Source local materials where possible to minimise transport requirements and provide local employment.
- Consider long-term maintenance requirements.
- Provide a buffer to the adjacent road

FUNCTIONS / MATERIALS

- Existing trees to be retained
- Open turf area for outdoor activity
- Shelter with table settings and BBQ will provide opportunity for socialisation
- All age Nature Playground for kids
- Pump track will create exercise and play opportunity as well as socialisation
- Connected path to open space perimeter, with connections to the broader path network.
- Provide a pedestrian link through estate and connecting POS from the road



LOCATION PLAN

| | |
|--|--------------------------|
| | TURF |
| | SHRUB PLANTING (AMENITY) |
| | LOW FUEL PLANTING |
| | BASIN |
| | LOT |
| | DUAL USE PATH |
| | FOOTPATH |
| | MULCH ONLY |
| | STREET TREES |
| | EXISTING TREES |
| | PROPOSED TREES |
| | CRUSHED LIMESTONE PATH |
| | BOARDWALK |
| | REVEGETATION |
| | EXTENT OF WORK |
| | REW |
| | REW BUFFER |



POS 17 CONCEPT



DRAINAGE LEGEND - CATCHMENT 17

FIRST 15mm BRA DETAILS

| | |
|-----------------------------|------|
| Depth(m): | 0.30 |
| Base Area(m ²): | 576 |
| Top Area(mAHD): | 666 |
| Slope | 1:3 |

POS TYPOLOGY

- Pocket Park
- SIZE**
- 4,480 m² + Verge

CONCEPT

- Plantings to provide buffer to external road
- Small Playground for kids
- Provide a pedestrian link through estate and connecting POS from the road
- Drainage basin as per LWMS



POS 11 CONCEPT



- PARK SHELTER WITH PICNIC SETTING
- JUNIOR AND TODDLER PLAYGROUND
- CATCHMENT 11 WITH BASIN AND SWALE PLANTING

DRAINAGE LEGEND - CATCHMENT 11

FIRST 15mm BRA DETAILS

| | |
|-----------------------------|------|
| Depth(m): | 0.30 |
| Base Area(m ²): | 1089 |
| Top Area(mAHD): | 1211 |
| Slope | 1:3 |



POS TYPOLOGY

- Pocket Park
- SIZE**
- 4,941 m² + Verge

CONCEPT

- Plantings to provide buffer to external road
- Small Playground for kids
- Provide a pedestrian link through estate and from the road
- Drainage basin as per LWMS

POS 18 CONCEPT



POS TYPOLOGY

- Pocket Park
- SIZE**
- 1,020 m² + Verge

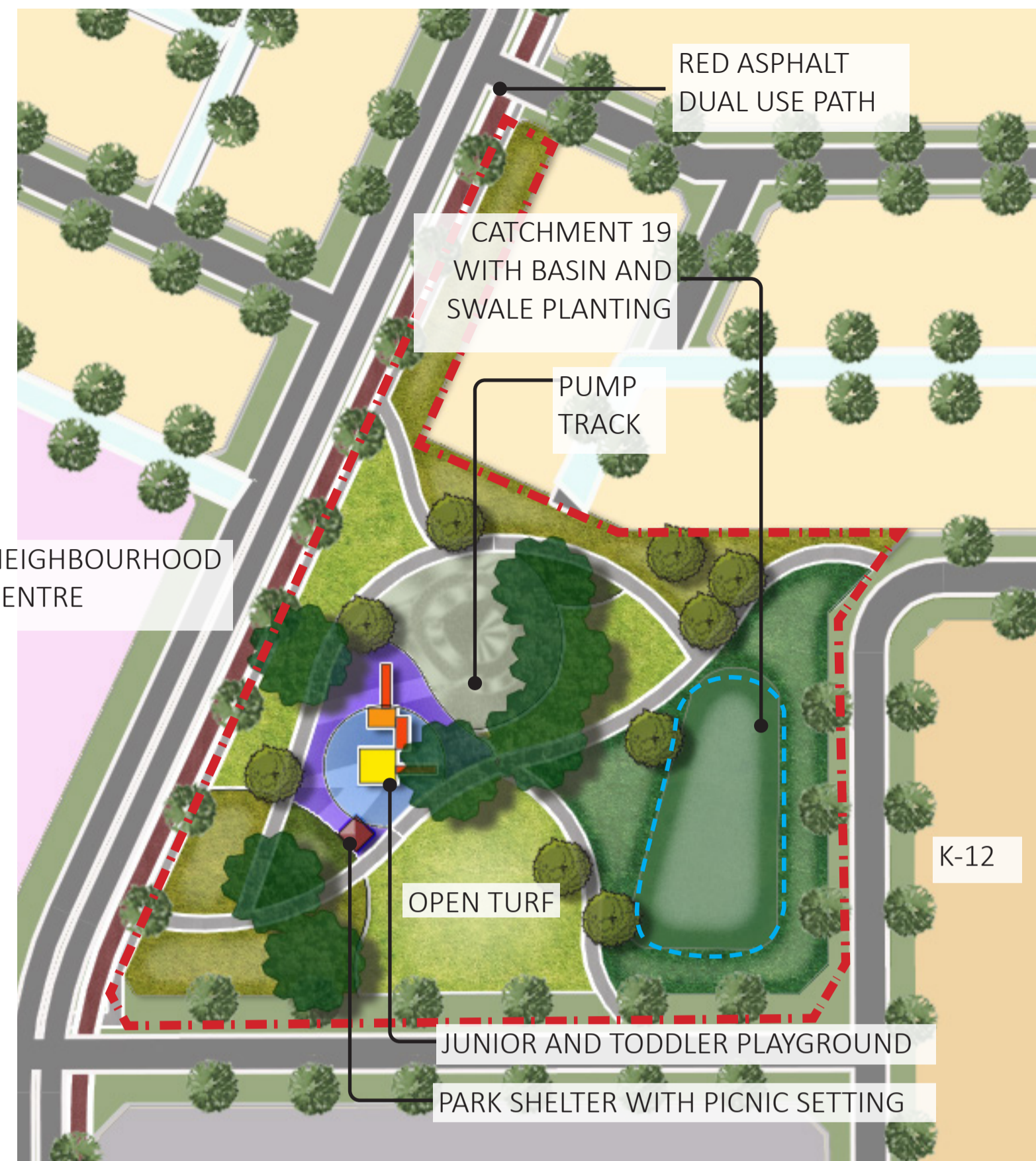
CONCEPT

- Plantings to provide buffer to external road
- Significant trees to be retained where possible
- Provide a pedestrian link through estate from the road

DWG MAR01_DES
 REV B
 DATE 2023-08-09
 SCALE 1 : 1000 @ A1
 © THIS DRAWING CAN NOT BE PUBLISHED OR DISPLAYED WITHOUT THE WRITTEN PERMISSION OF THE CLIENT AND AUTHOR, AND IS ISSUED FOR INFORMATION PURPOSES ONLY AND MAY ALTER WITHOUT NOTIFICATION.



POS 19 CONCEPT



DRAINAGE LEGEND - CATCHMENT 19

| FIRST 15mm BRA DETAILS | |
|-----------------------------|------|
| Depth(m): | 0.30 |
| Base Area(m ²): | 1089 |
| Top Area(mAHD): | 1211 |
| Slope | 1:3 |

POS TYPOLOGY

- Neighbourhood Park
- 1.28 ha + Verge

CONCEPT

- D.U.P on western side of the POS to provide connection to road integrators
- Concrete footpath to provide connection to road integrators
- Shrub vegetation to provide buffer from adjacent road
- Provide a pedestrian link through estate from neighbourhood centre
- Opportunity of BMX bike tracks to be implemented in existing tree canopy at where is appropriate
- Open turf to provide activity area to residents
- Turf mounding to create a unique landscape topography
- Significant trees to be retained where possible
- Picnic area with shelter, picnic setting and BBQ area
- Playground to provide activity space
- Drainage basin as per LWMS

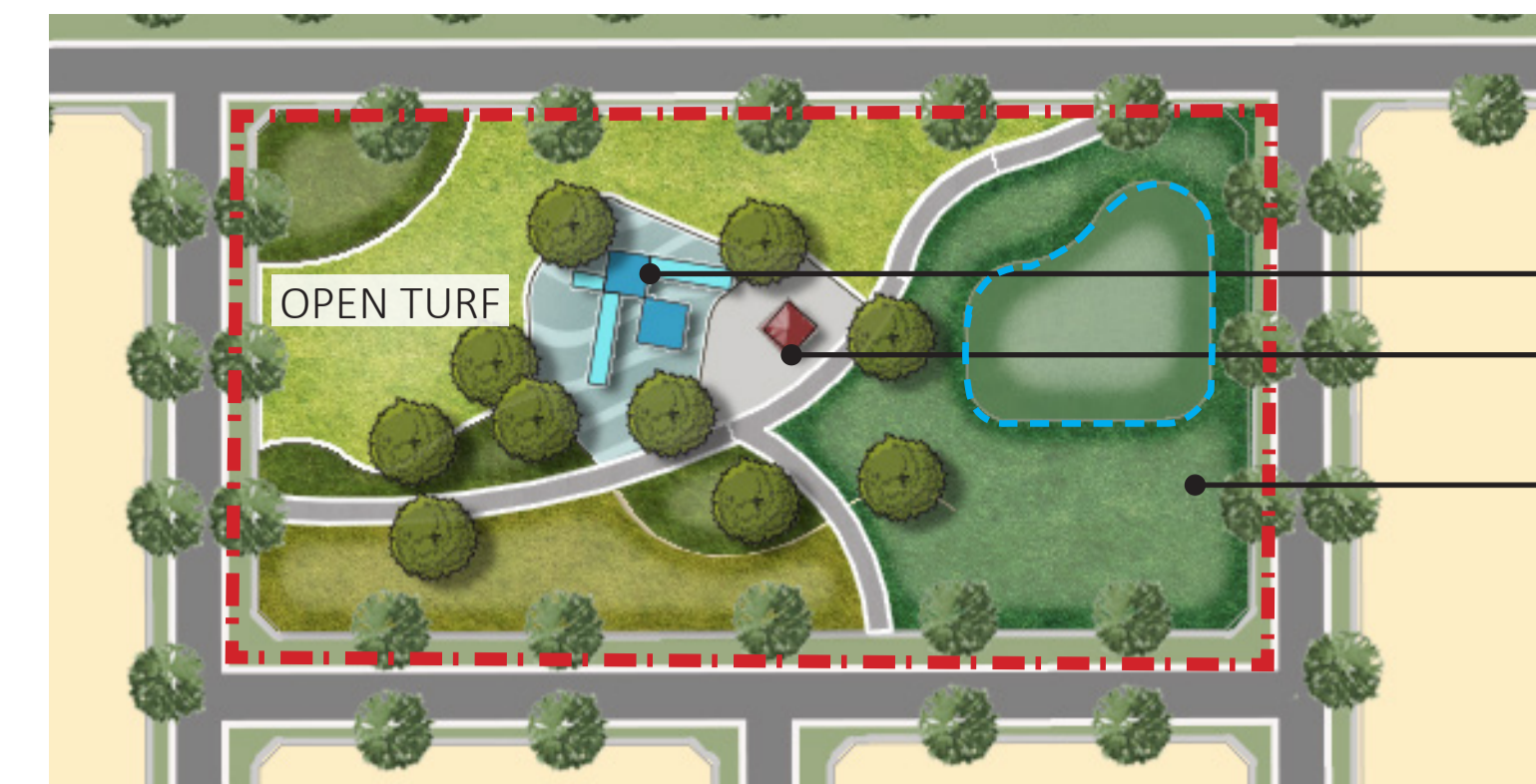
FUNCTIONS / MATERIALS

- Playground for kids
- Turf mounding to create unique landscape topography
- Pump track will create exercise and play opportunity as well as socialisation
- Shelter with table settings and BBQ will provide opportunity for socialisation
- Existing trees to be retained
- Open turf area for outdoor activity
- Connected path and pedestrian link to open space perimeter, with connections to the neighbourhood centre, school and train station

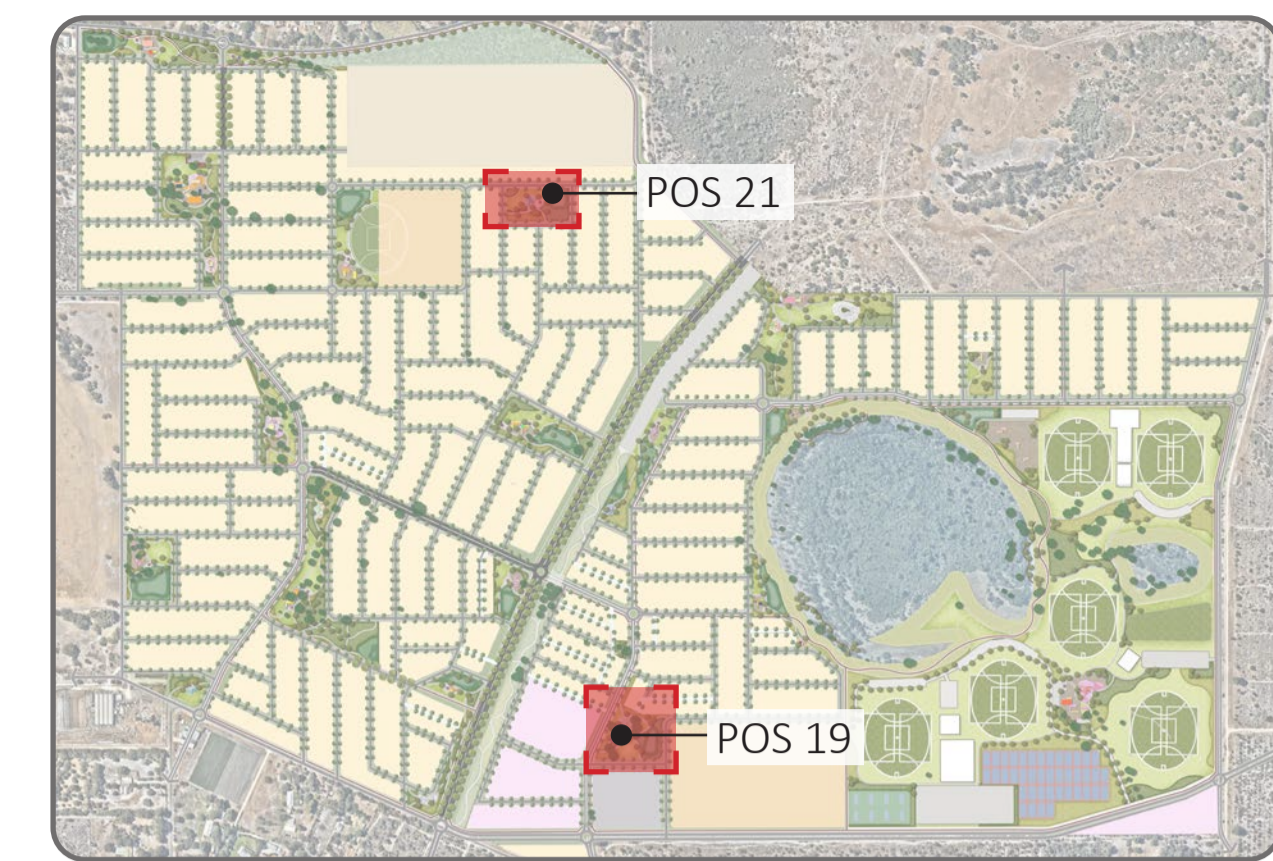
ENVIRONMENTAL CONSIDERATIONS

- Existing trees and vegetation to be retained where possible.
- Low fuel planting to minimise the threat area intensity for bushfire prone areas
- Water-wise native planting and planting
- Source local materials where possible to minimise transport requirements and provide local employment.
- Consider long-term maintenance requirements.
- Provide a buffer to the adjacent road

POS 21 CONCEPT



- JUNIOR AND TODDLER PLAYGROUND
- PARK SHELTER WITH PICNIC SETTING
- CATCHMENT 21 WITH BASIN AND SWALE PLANTING



LOCATION PLAN

DRAINAGE LEGEND - CATCHMENT 21

| FIRST 15mm BRA DETAILS | |
|-----------------------------|------|
| Depth(m): | 0.30 |
| Base Area(m ²): | 676 |
| Top Area(mAHD): | 773 |
| Slope | 1:3 |

POS TYPOLOGY

- Local Park
- .9 ha + Verge

FUNCTIONS / MATERIALS

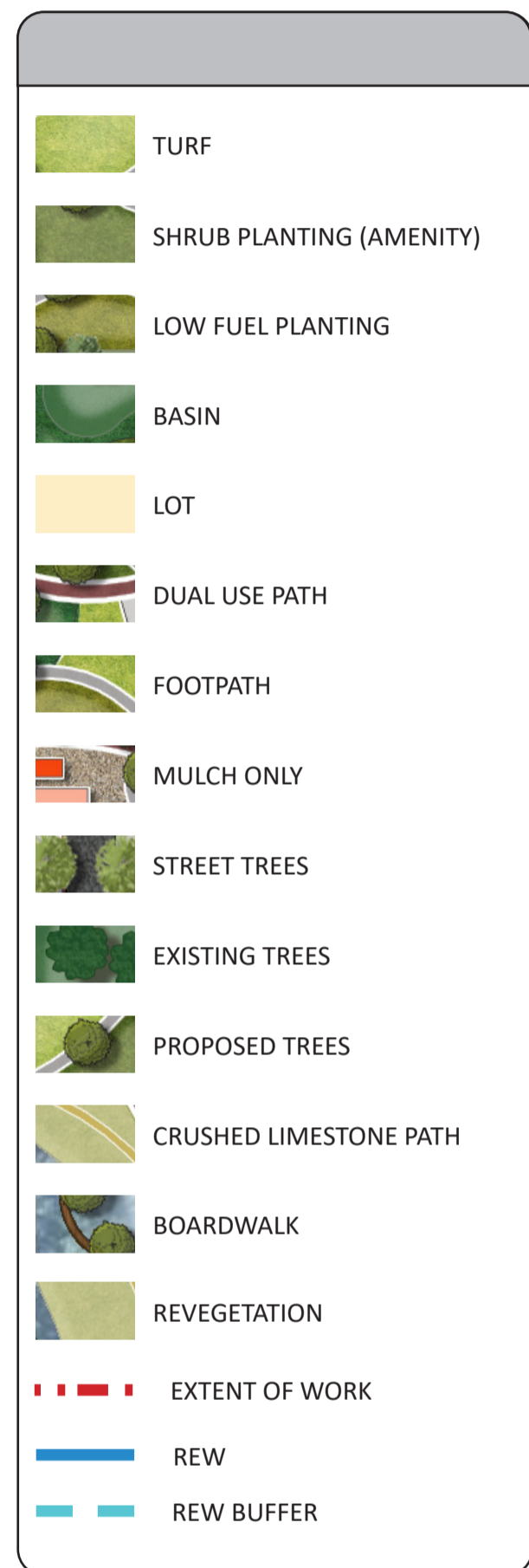
- Existing trees to be retained
- Open turf area for outdoor activity
- Shelter and picnic settings
- Playground for kids
- Connected path to open space perimeter, with connections to the broader path network.

CONCEPT

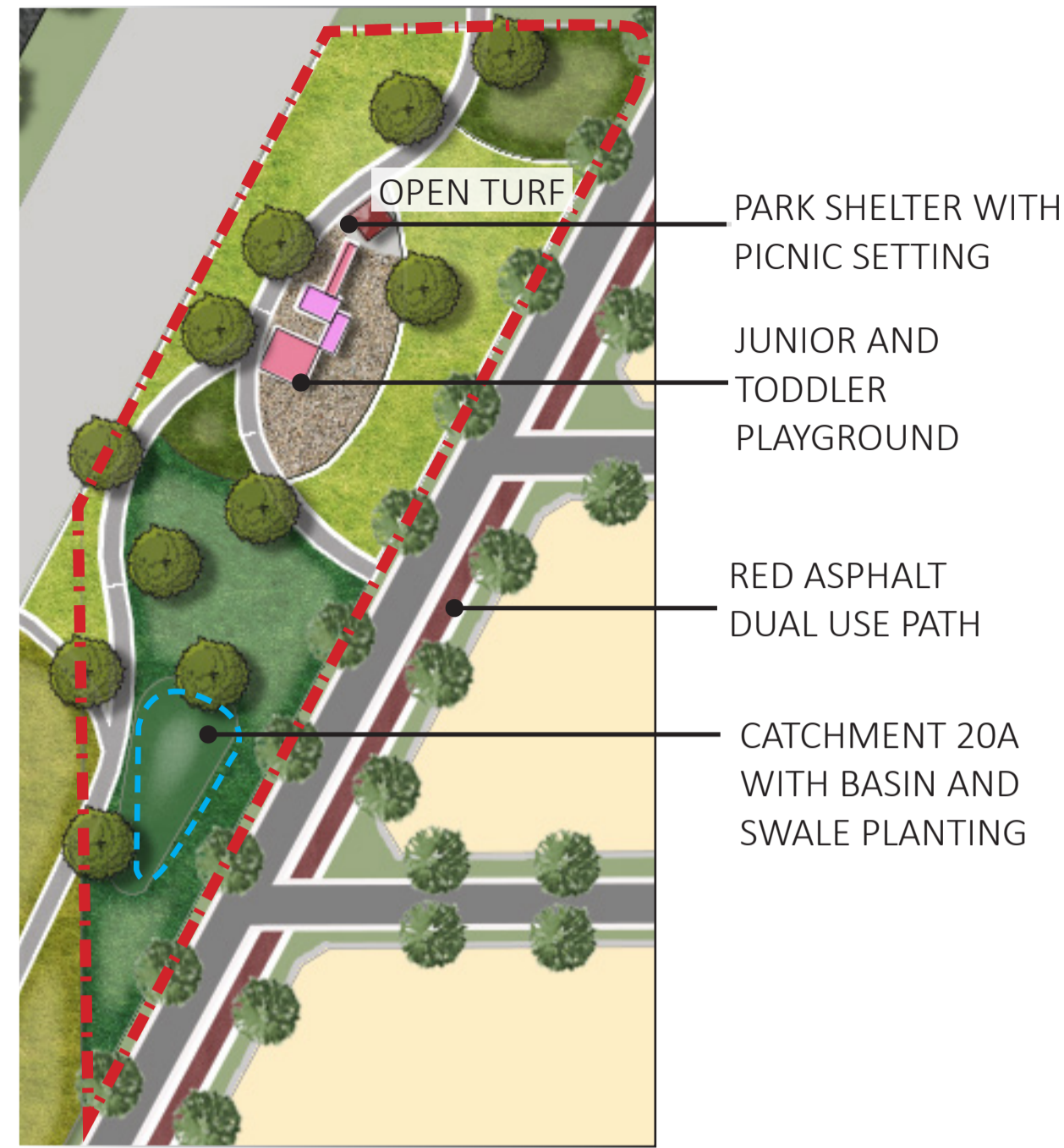
- Shrub vegetation to provide as buffer to adjacent road
- Provide a pedestrian link through estate
- Significant trees to be retained where possible
- Picnic area with shelter and picnic setting
- playground to provide activity space
- Open turf to provide activity area to residents
- Drainage basin as per LWMS

ENVIRONMENTAL CONSIDERATIONS

- Existing trees and vegetation to be retained where possible.
- Low fuel planting to minimise the threat area intensity for bushfire prone areas
- Water-wise native planting and planting
- Source local materials where possible to minimise transport requirements and provide local employment.
- Consider long-term maintenance requirements.
- Provide a buffer to the adjacent road



POS 20A CONCEPT



- CONCEPT**
- Shrub vegetation to provide buffer to adjacent road
 - Provide a pedestrian link through estate and connecting POS from the road
 - Picnic area with shelter and picnic setting
 - Playground to provide activity space
 - Open turf to provide activity area to residents
 - Drainage basin as per LWMS

- ENVIRONMENTAL CONSIDERATIONS**
- Low fuel planting to minimise the threat area intensity for bushfire prone areas
 - Water-wise native planting and planting
 - Source local materials where possible to minimise transport requirements and provide local employment.
 - Consider long-term maintenance requirements.
 - Provide a buffer to the adjacent road

DRAINAGE LEGEND - CATCHMENT 20A

FIRST 15mm BRA DETAILS

| | |
|----------------------------|------|
| Depth(m): | 0.30 |
| Base Area(m ²) | 289 |
| Top Area(mAHD): | 353 |
| Slope | 1:3 |

- POS TYPOLOGY**
- Local Park
- SIZE**
- .6329 ha + Verge

- FUNCTIONS / MATERIALS**
- Open turf area for outdoor activity
 - Shelter and picnic settings
 - Playground for kids
 - Connected path to open space perimeter, with connections to the broader path network.



DRAINAGE LEGEND - CATCHMENT 20B

FIRST 15mm BRA DETAILS

| | |
|----------------------------|------|
| Depth(m): | 0.30 |
| Base Area(m ²) | 1225 |
| Top Area(mAHD): | 1354 |
| Slope | 1:3 |

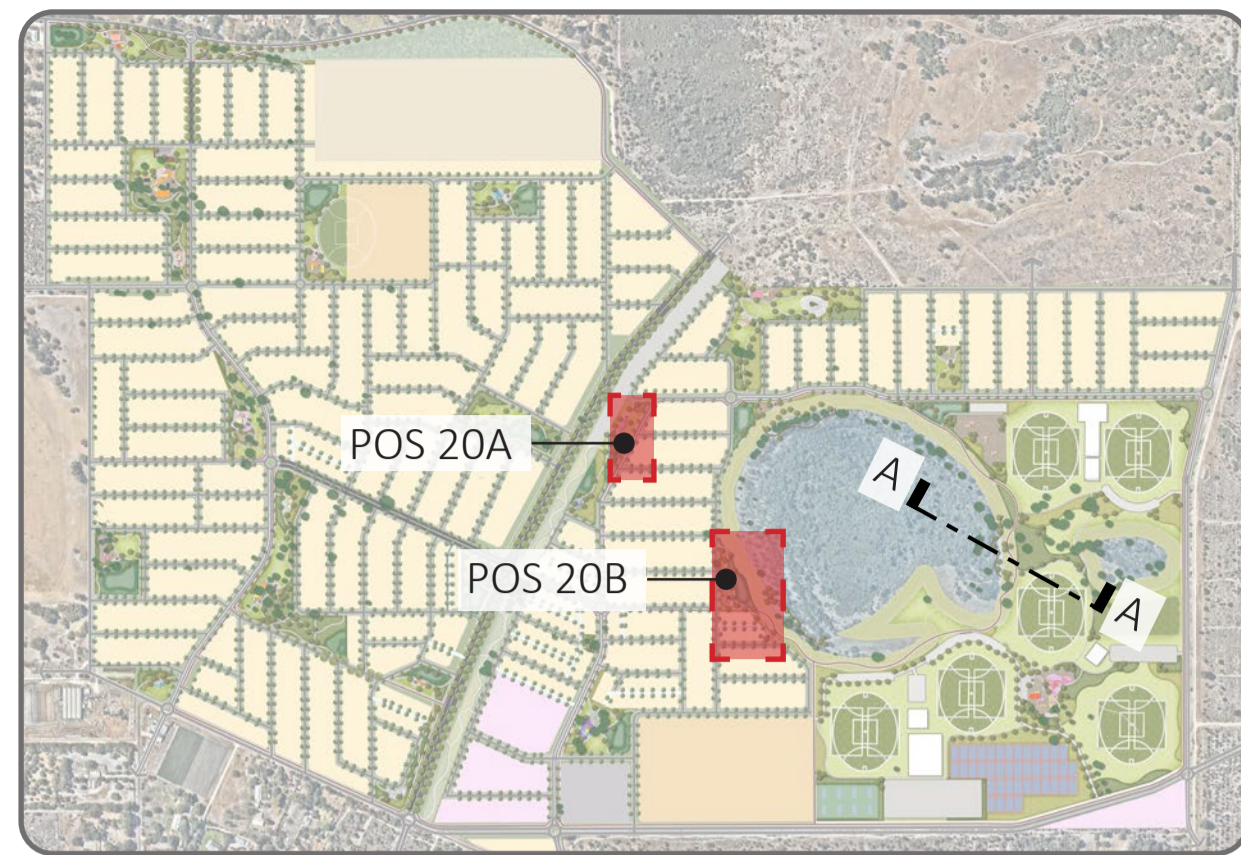
- POS TYPOLOGY**
- Local Park
- SIZE**
- .8273 ha + Verge

- FUNCTIONS / MATERIALS**
- Open turf area for outdoor activity
 - Shelter and picnic settings
 - Playground for kids
 - Outdoor exercise area provide fitness opportunities for the residents
 - Connected path to open space perimeter, with connections to the broader path network and DUP



- CONCEPT**
- D.U.P on southern side of the POS to provide connection to road integrators
 - Provide fitness area for residents
 - Shrub vegetation to provide buffer to adjacent road
 - Provide a pedestrian link through estate and REW
 - Picnic area with shelter and picnic setting
 - playground to provide activity space
 - Open turf to provide activity area to residents
 - Drainage basin as per LWMS

- ENVIRONMENTAL CONSIDERATIONS**
- Low fuel planting to minimise the threat area intensity for bushfire prone areas
 - Water-wise native planting and planting
 - Source local materials where possible to minimise transport requirements and provide local employment.
 - Consider long-term maintenance requirements.



LOCATION PLAN

LEGEND

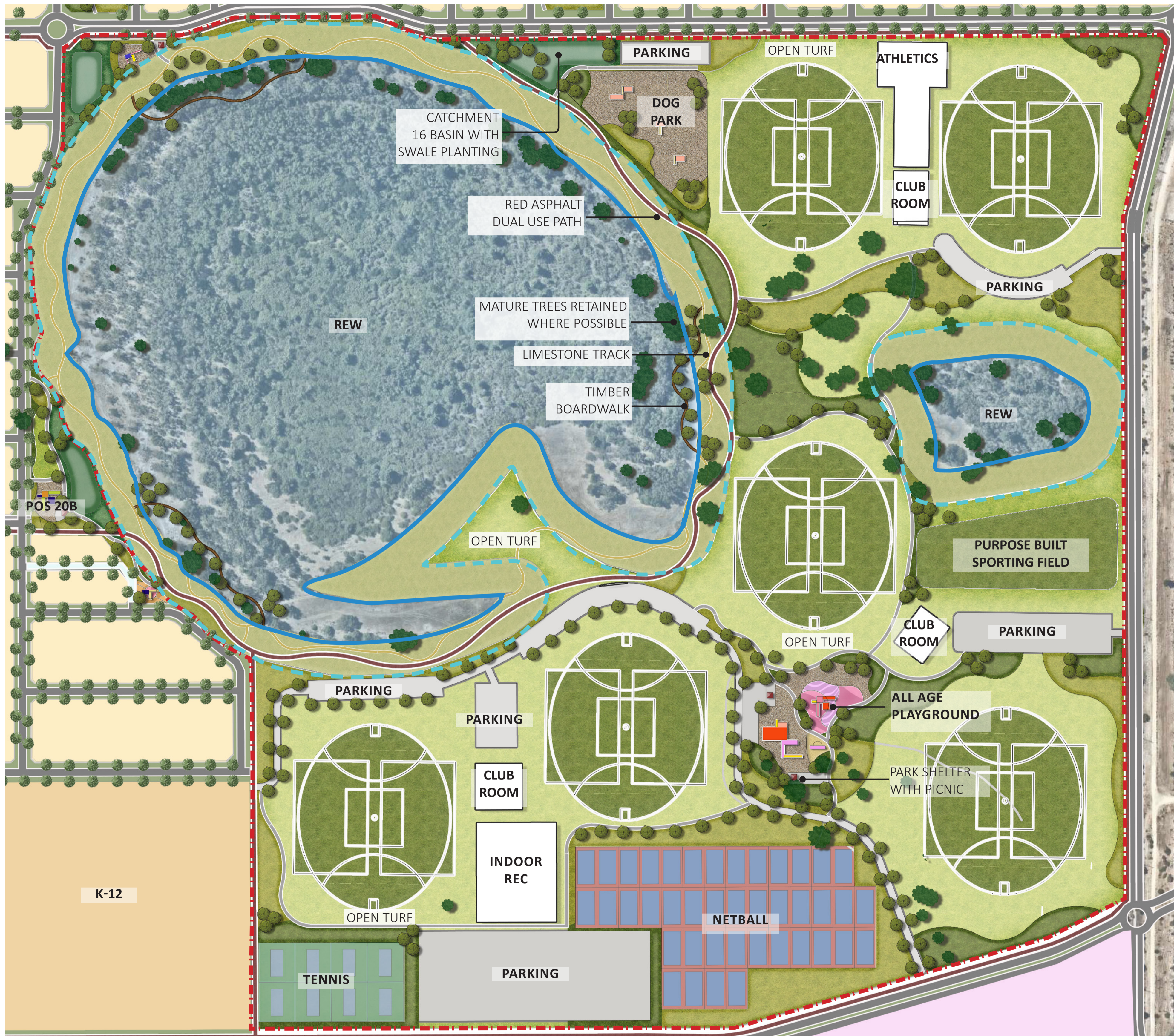
- TURF
- SHRUB PLANTING (AMENITY)
- LOW FUEL PLANTING
- BASIN
- LOT
- DUAL USE PATH
- FOOTPATH
- MULCH ONLY
- STREET TREES
- EXISTING TREES
- PROPOSED TREES
- CRUSHED LIMESTONE PATH
- BOARDWALK
- REW
- REVEGETATION
- EXTENT OF WORK
- REW
- REW BUFFER

REGIONAL POS SECTION



SECTION A-A
SCALE 1:200 @ A1

U:\CURRENT PROJECTS\Mariginiup - Stockland\02 Concept & Reports\01 CODE Title of works\Indd\MAR-Mariginiup.indd



POS TYPOLOGY

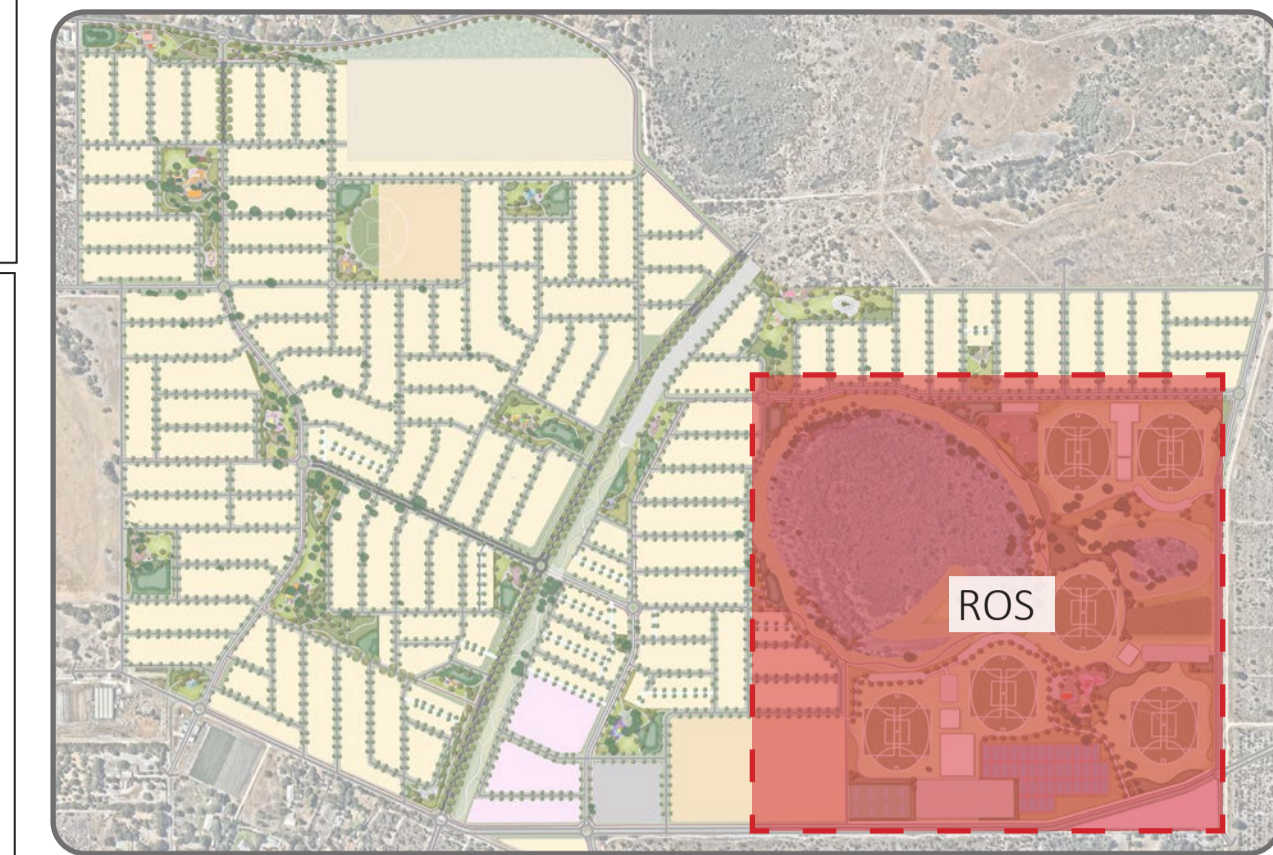
- Sports POS

SIZE

- 47.423 ha + Verge

- CONCEPT POS 7**
- Playing field to provide with senior 6xAFL oval, 2
 - Dual use path to provide cyclists and pedestrian with connection to wetland area
 - Connected path to open space perimeter, with connections to the broader path network and DUP
 - Provide a pedestrian link through estate, REW and road integrators
 - All age playground to provide play space
 - Fitness area to provide exercise space
 - 2x Shelter with picnic settings to provide BBQ area
 - Shrub vegetation to provide buffer to adjacent road
 - Open turf to provide activity area to residents
 - Mounded turf to create good views to the playing field as well as to provide opportunities for sitting, laying, and gathering
 - Large area of existing vegetation & significant trees to be retained and protected
 - Dog park with agilities to be included in the POS
 - Drainage basin as per LWMS design

- ENVIRONMENTAL CONSIDERATIONS**
- Large area of existing vegetation to be retained and protected for local flora and fauna habitat
 - Revegetation planting around REW buffers to enhance local flora and fauna habitat. Palette aligns with spring survey results
 - Significant existing trees to be retained in open space where possible
 - Water-wise native planting.
 - Consider long-term maintenance requirements.
 - Source local materials where possible to minimise transport requirements and provide local employment.
 - Dirt and crushed limestone track/path in existing vegetation area instead of



LOCATION PLAN

- FUNCTIONS / MATERIALS**
- Significant existing trees to be retained
 - Playing field including 6x AFL Senior oval
 - Open turf area for outdoor activity
 - Mounded turf to create good views
 - Shelter with table settings and BBQ will provide opportunity for socialisation
 - All-age playground for all people
 - Dog park for dog agility play opportunity for residents
 - Turf mounding to create unique landscape topography
 - Boardwalk to provided good view above drainage basin
 - Limestone path in shrub planting
 - Outdoor exercise area provide fitness opportunities for the residents
 - Connected path to open space perimeter, with connections to the broader path network and DUP

LEGEND

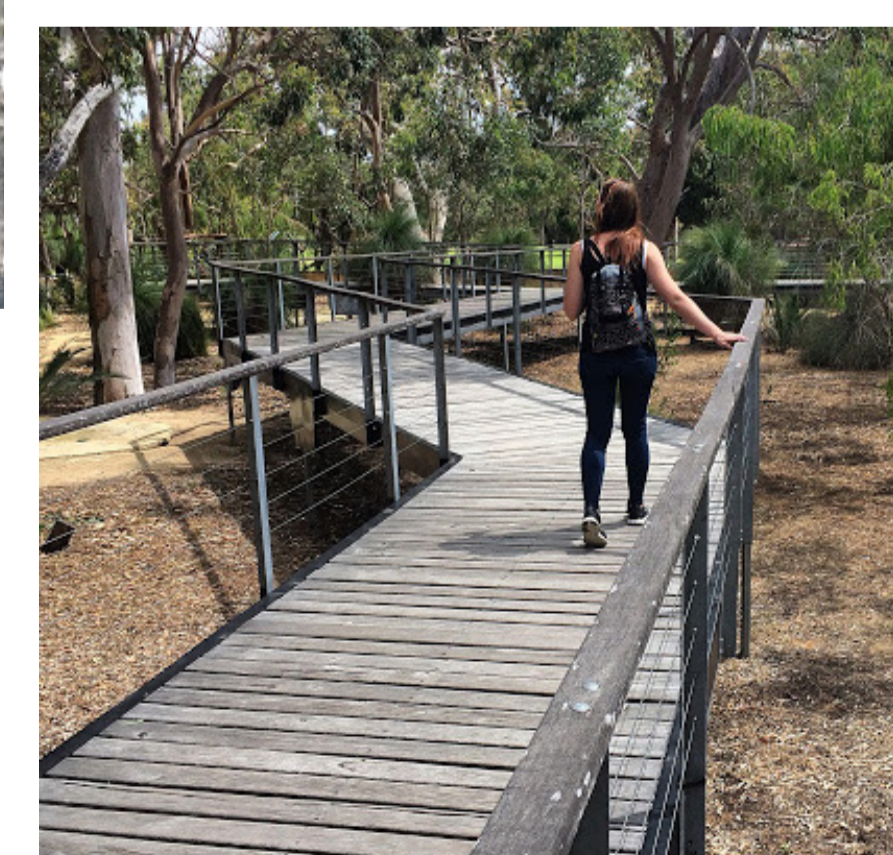
- TURF
- SHRUB PLANTING (AMENITY)
- LOW FUEL PLANTING
- BASIN
- LOT
- DUAL USE PATH
- FOOTPATH
- MULCH ONLY
- STREET TREES
- EXISTING TREES
- PROPOSED TREES
- CRUSHED LIMESTONE PATH
- BOARDWALK
- REW
- REVEGETATION
- EXTENT OF WORK
- REW
- REW BUFFER



DRAINAGE LEGEND - CATCHMENT 16

FIRST 15mm BRA DETAILS

| | |
|-----------------------------|------|
| Depth(m): | 0.30 |
| Base Area(m ²): | 2401 |
| Top Area(mAHD): | 2582 |
| Slope | 1:3 |



STREET TREE PLANTINGS



Eucalyptus gomphocephala



Jacaranda mimosifolia



Olea europaea (Swan Hill)



Melaleuca leucadendron



Agonis flexuosa



Callistemon 'KPS'



Corymbia calophylla



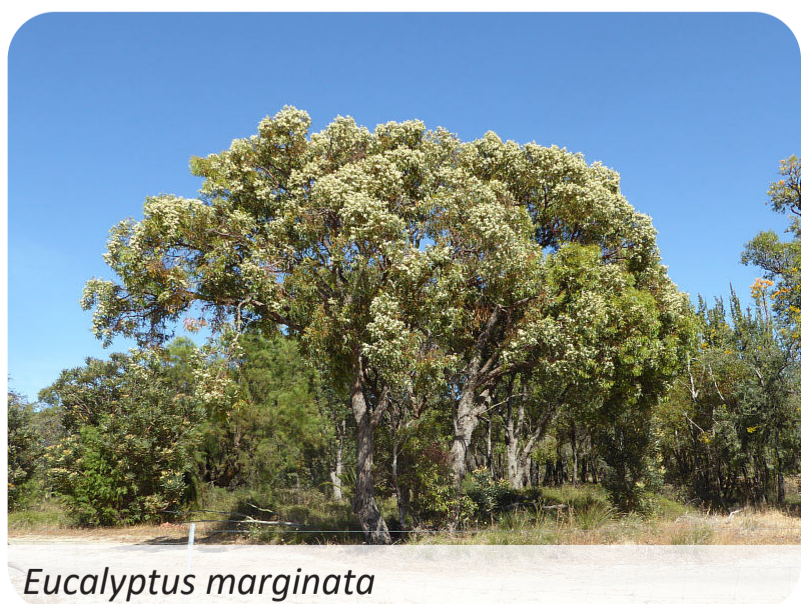
Eucalyptus gomphocephala



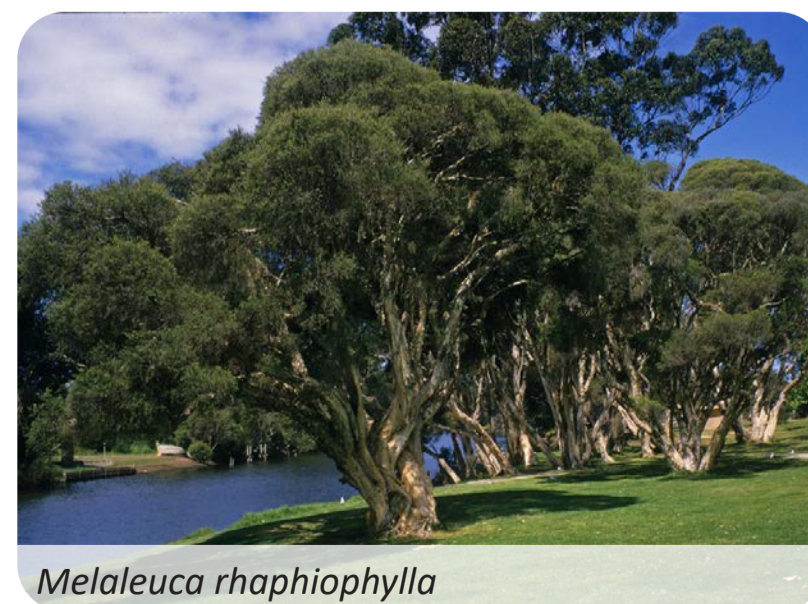
Eucalyptus rudis



Eucalyptus todtiana



Eucalyptus marginata



Melaleuca raphiophylla

SHRUB PLANTING



Acacia lasiocarpa



Conostylis aculeata ssp. preissii



Dianella revoluta



Dampiera linearis



Eremophila maculata



Grevillea crithmifolia



Grevillea thelemanniana



Hemiandra pungens



Patersonia occidentalis



Olearia axillaris



Rhagodia baccata



Darwinia citriodora



Dianella cassia blue



Eremophila glabra



Lepidosperma calcicola



Lepidosperma gladiatum



Lomandra longifolia



Meeboldina scariosa

REVEGETATION PLANTING



Anigozanthos manglesii



Adenanthos cygnorum



Adenanthos cygnorum



Acacia pulchella



Beaufortia squarrosa



Baumea juncea



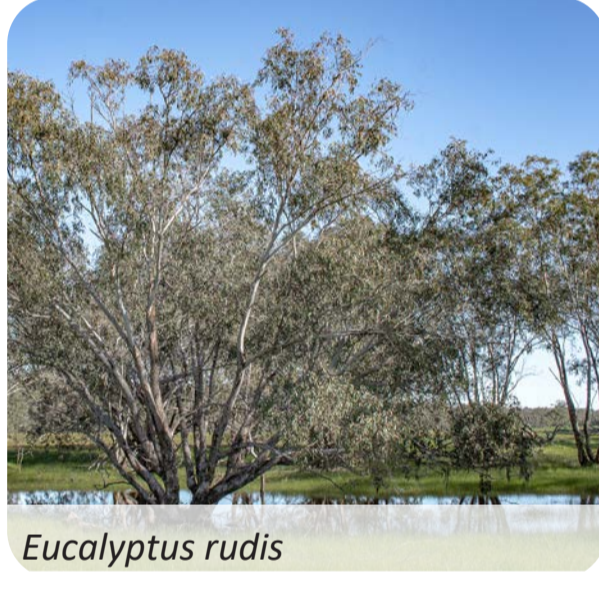
Banksia grandis



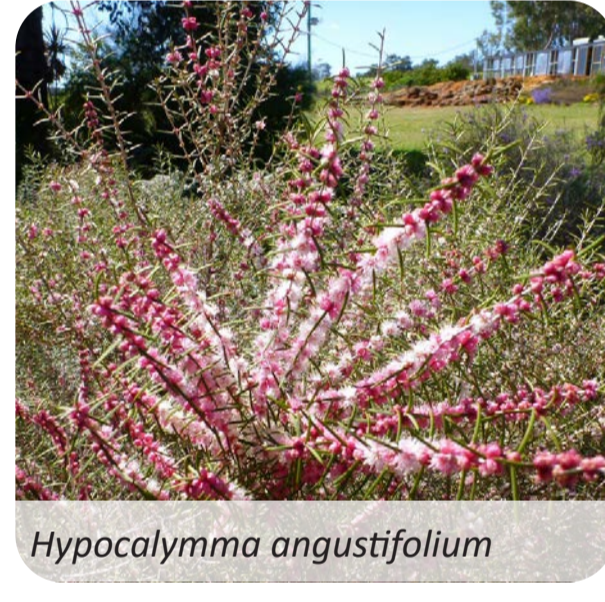
Calothamnus sanguineus



Darwinia citriodora



Eucalyptus rudis



Hypocalymma angustifolium



Juncus pallidus



Jacksonia sternbergiana



Kunzea glabrescens



Kennedia prostrata



Regelia inops



Verticordia densiflora

LOW FUEL PLANTING



Anigozanthos manglesii



Austrostipa compressa



Conostylis aculeata



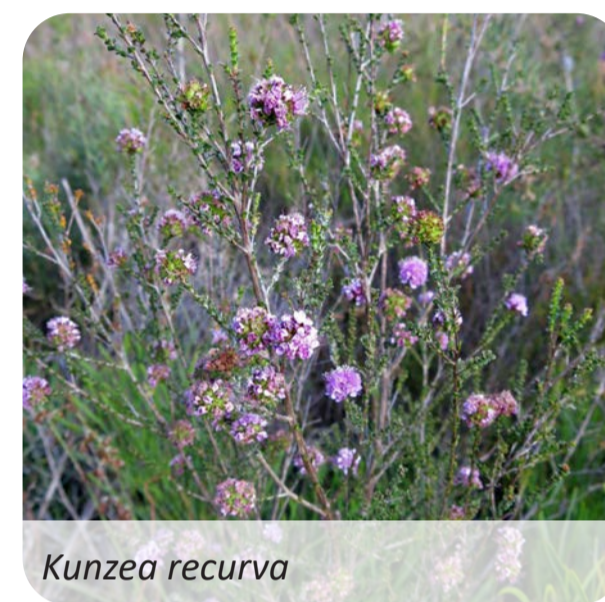
Dampiera linearis



Juncus pallidus



Kennedia prostrata



Kunzea recurva



Melaleuca thymoides



Patersonia occidentalis