

# 03 PLANTING PALETTE

DETAIL

TREES



*Allocasuarina fraseriana*  
Common Sheoak



*Allocasuarina humilis*  
Dwarf Sheoak



*Banksia attenuata*  
Candle Banksia



*Banksia grandis*  
Bull Banksia



*Banksia menziesii*  
Firewood Banksia



*Banksia prionotes*  
Acorn Banksia

TREES



*Banksia sessilis*  
Parrot Bush



*Callistemon viminalis*  
Weeping Bottlebrush



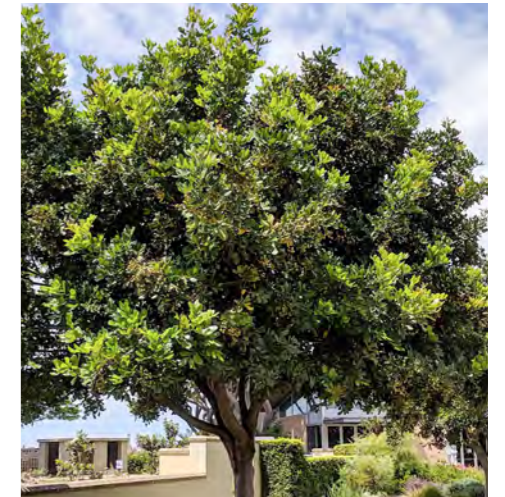
*Corymbia calophylla*  
Marri



*Corymbia ficifolia*  
Red Flowering Gum



*Corymbia maculata*  
Spotted Gum



*Cupaniopsis anacardioides*  
Tuckeroo

TREES



*Eucalyptus decipiens*  
Limestone Marlock



*Eucalyptus erythrocorys*  
Limestone Marlock



*Eucalyptus gomphocephala*  
Tuart



*Eucalyptus marginata*  
Jarrah



*Eucalyptus rudis*  
Flooded gum

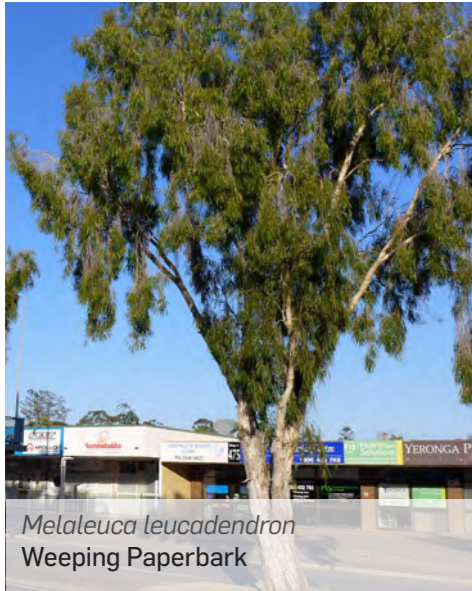


*Eucalyptus tottiana*  
Prickly Bark

# PLANTING PALETTE *03*

DETAIL

TREES



*Melaleuca leucadendron*  
Weeping Paperbark



*Melaleuca preissiana*  
Modong

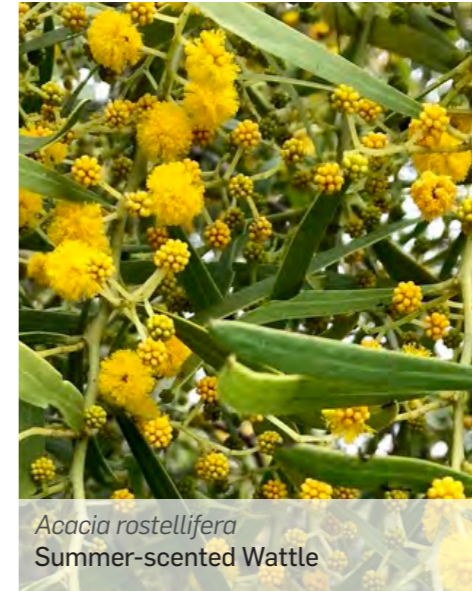


*Xylomelum occidentale*  
Woody Pear

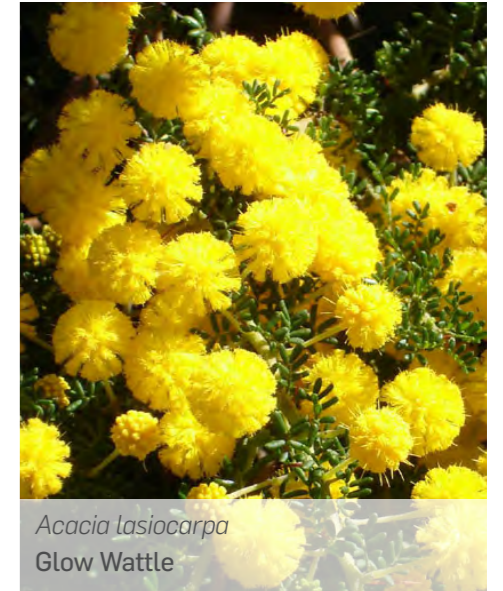
SHRUBS AND GROUNDCOVERS



*Acacia pulchella*  
Prickly Moses



*Acacia rostelifera*  
Summer-scented Wattle



*Acacia lasiocarpa*  
Glow Wattle

SHRUBS AND GROUNDCOVERS



*Adenanthos sericeus*  
Wolly Bush



*Atriplex cinerea*  
Coastal Saltbush



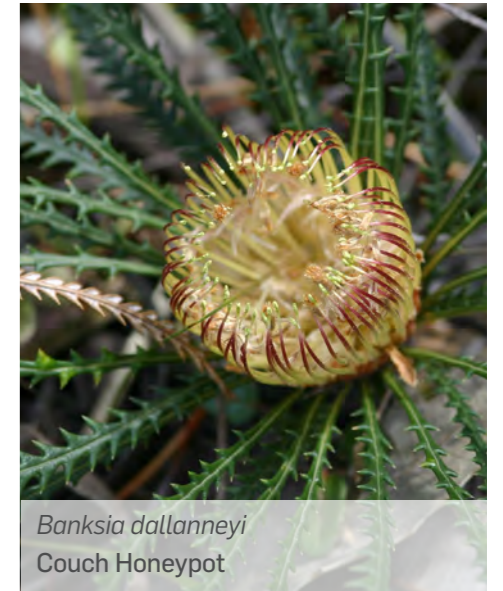
*Anigozanthos humilis*  
Catspaw



*Anigozanthos manglesii*  
Mangles Kangaroo Paw

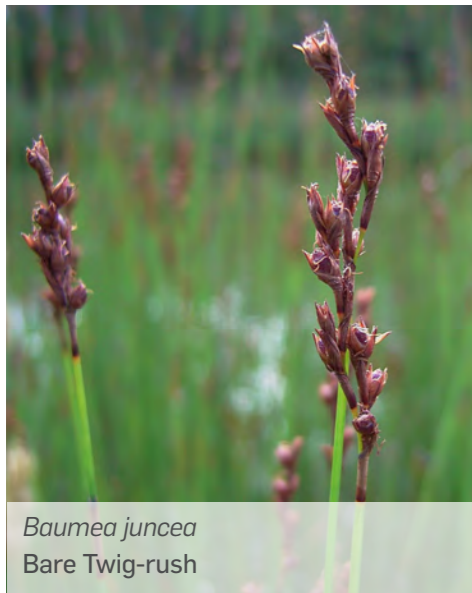


*Banksia ashbyi*  
Ashby's banksia



*Banksia dallanneyi*  
Couch Honeypot

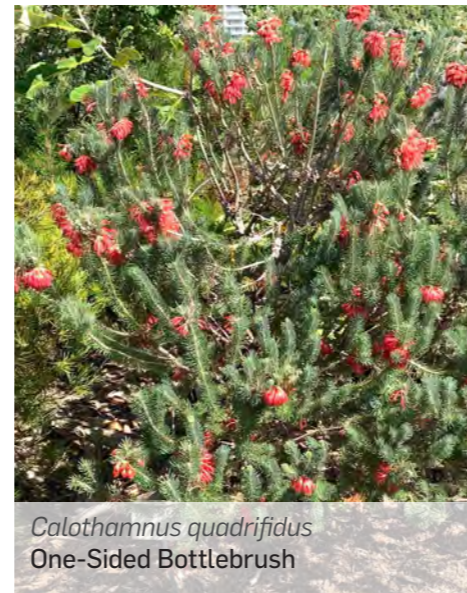
SHRUBS AND GROUNDCOVERS



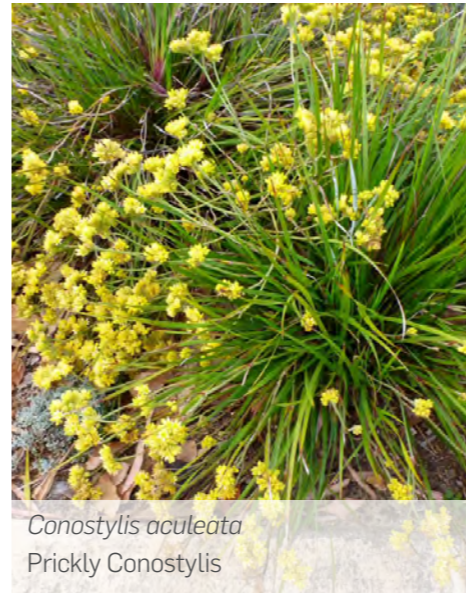
*Baumea juncea*  
Bare Twig-rush



*Beaufortia elegans*  
Elegant Beaufortia



*Calothamnus quadrifidus*  
One-Sided Bottlebrush



*Conostylis aculeata*  
Prickly Conostylis



*Conostephium pendulum*  
Pearl flower



*Conostylis candicans*  
Grey Cottonheads

# 03 PLANTING PALETTE

## DETAIL

SHRUBS AND GROUNDCOVERS



*Conospermum stoechadis*  
Common Smokebush



*Dianella revoluta*  
Blueberry Lily



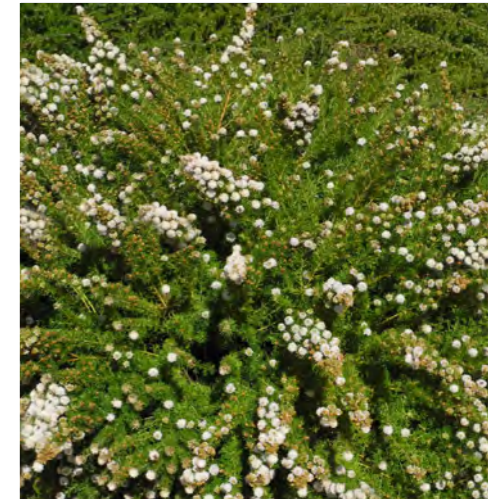
*Eremaea pauciflora*  
Orange-fruited Eremaea



*Eremophila glabra*  
Tar Bush



*Ficinia nodosa*  
Knotted Club Sedgerass



*Grevillea crithmifolia*  
Fine-leaved Grevillea



*Grevillea preissii*  
Native Fuchsia



*Grevillea vestita*  
Wooly Grevillea



*Guichenotia ledifolia*  
Guichenotia



*Hakea laurina*  
Pin Cushion Hakea



*Hakea lissocarpha*  
Honey Bush



*Hakea prostrata*  
Harsh Hakea



*Hakea ruscifolia*  
Candle Hakea



*Hardenbergia comptoniana*  
Native Wisteria



*Hemiantra pungens*  
Snake Bush



*Hibbertia hypericoides*  
Yellow Buttercups



*Hypocalymma angustifolium*  
White myrtle



*Hypocalymma robustum*  
Prickly Bark

PLANTING PALETTE 03

DETAIL

SHRUBS AND GROUNDCOVERS



*Juncus pallidus*  
Pale Rush



*Kunzea ericifolia*  
Spearwood



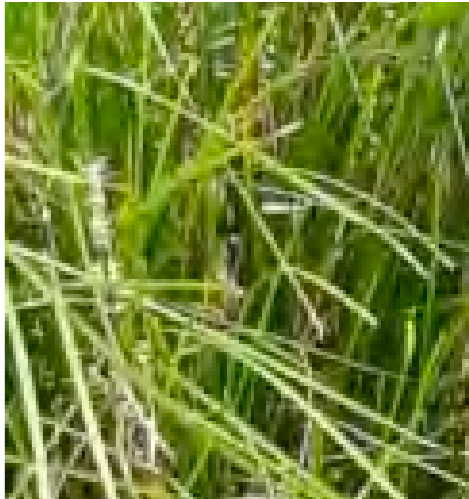
*Kunzea glabrescens*  
Spearwood



*Lechenaultia linarioides*  
Yellow Lechenaultia



*Lepidosperma gladiatum*  
Coastal Saw Sedge



*Lomandra longifolia* 'Tanika'  
Tanika

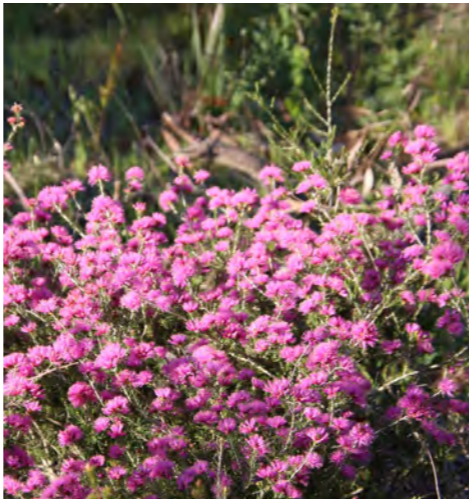
SHRUBS AND GROUNDCOVERS



*Melaleuca huegelii*  
Chenille Honey-Myrtle



*Melaleuca lanceolata*  
Moonah



*Melaleuca seriata*  
Paperbark Honey Myrtle



*Melaleuca systema*  
Coastal Boobialla



*Olearia axillaris*  
Coast Daisy Bush



*Orthrosanthus laxus*  
Morning Iris

SHRUBS AND GROUNDCOVERS



*Patersonia occidentalis*  
Western Patersonia



*Raphiolepis indica*  
Snow White



*Regelia inops*  
-



*Scaevola crassifolia*  
Thick-leaved Fan-flower



*Westringia dampieri*  
Shore Westringia



*Xanthorrhoea preissii*  
Grass Tree



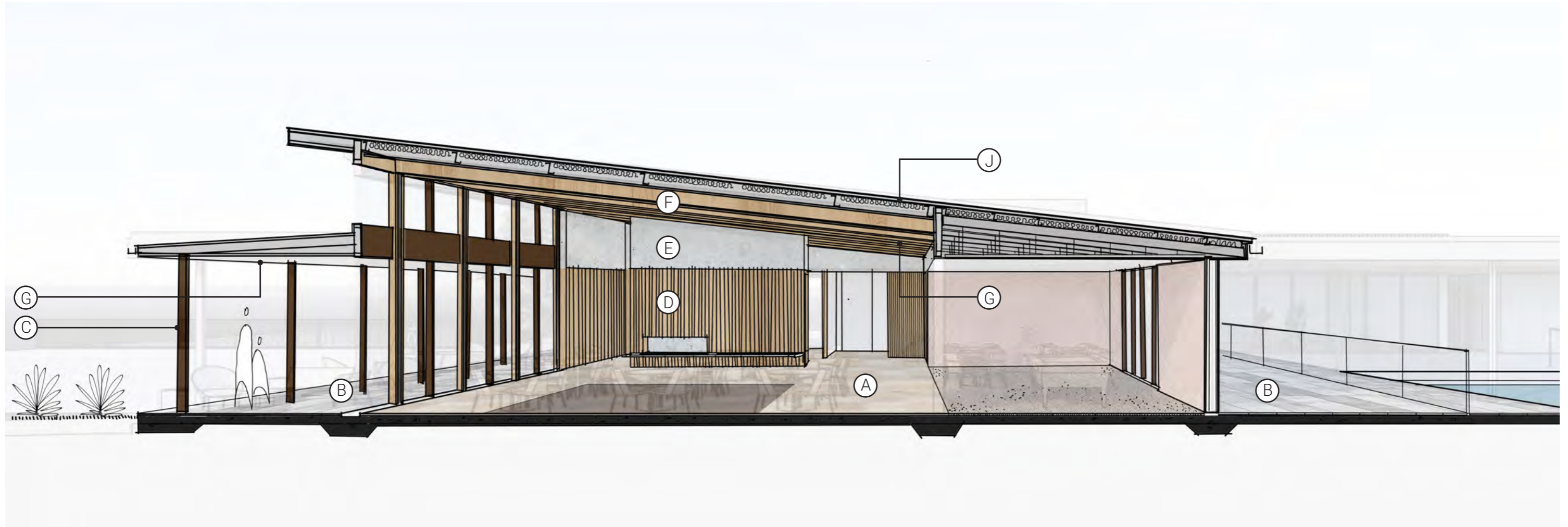
### PRINCIPLE 3

---

## BUILT FORM + SCALE

*Good design ensures that the massing and height of development is appropriate to its setting and successfully negotiates between existing built form and the intended future character of the local area.*

# FUNCTION ROOM - CONSTRUCTION DIAGRAM



Ⓐ



Stone tiles with carpet insert

Ⓑ



Paving on concrete slab

Ⓒ



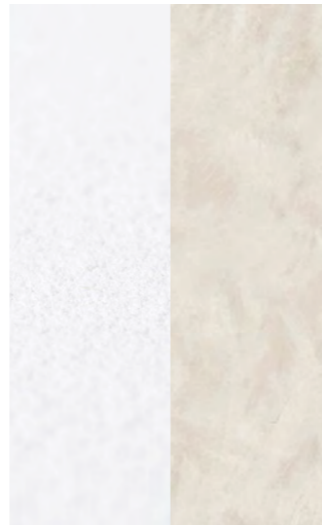
Bronze metal finish

Ⓓ



Textured cladding on steel stud system

Ⓔ



Limewash paint on FC cladding

Ⓕ



Hybrid steel-timber exposed rafters, perforated acoustic ceiling in-between

Ⓖ



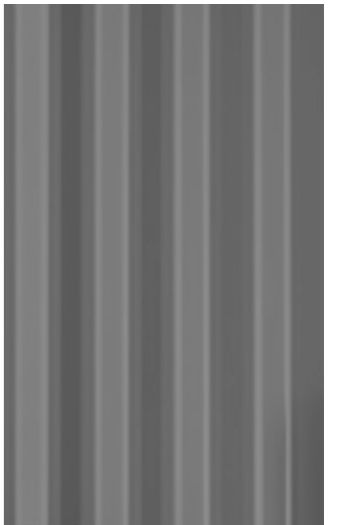
Painted soffit

Ⓕ



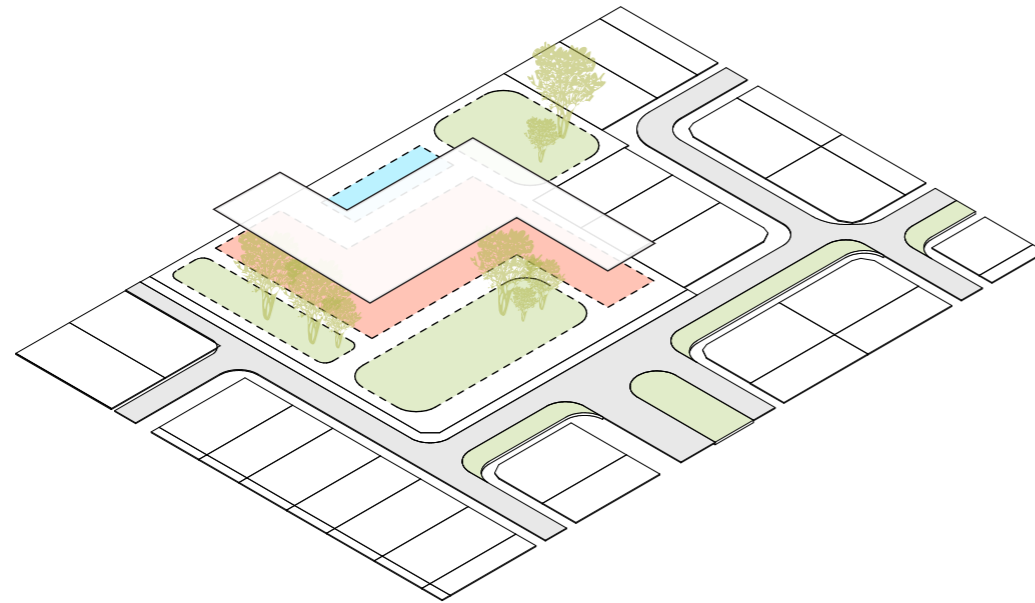
Acoustic panelling (ceiling and wall where required)

Ⓖ

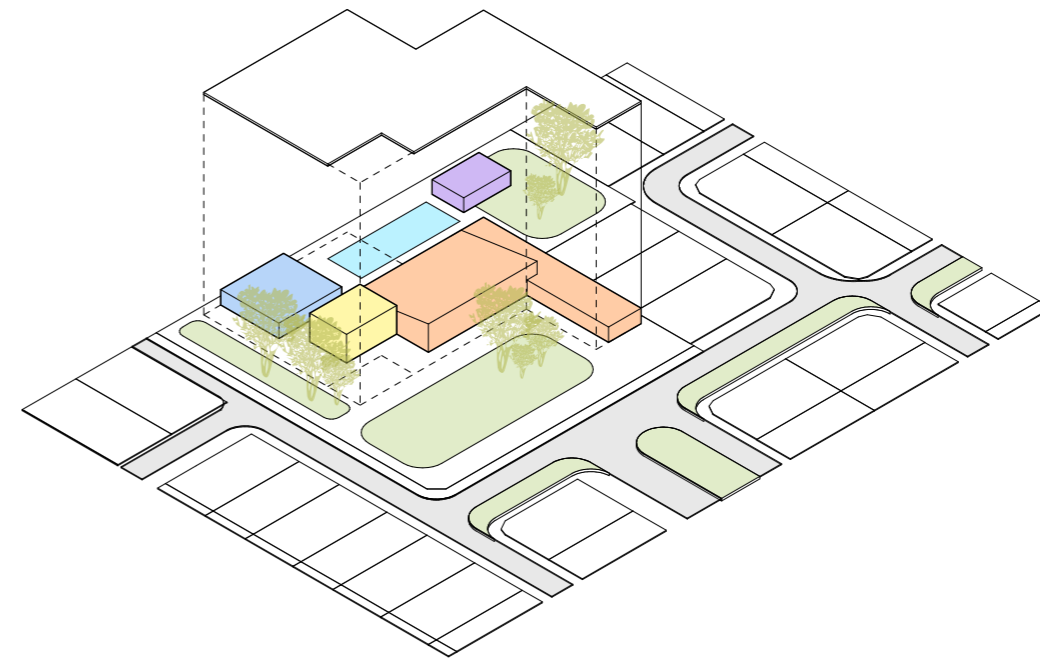


Corrugated metal roof

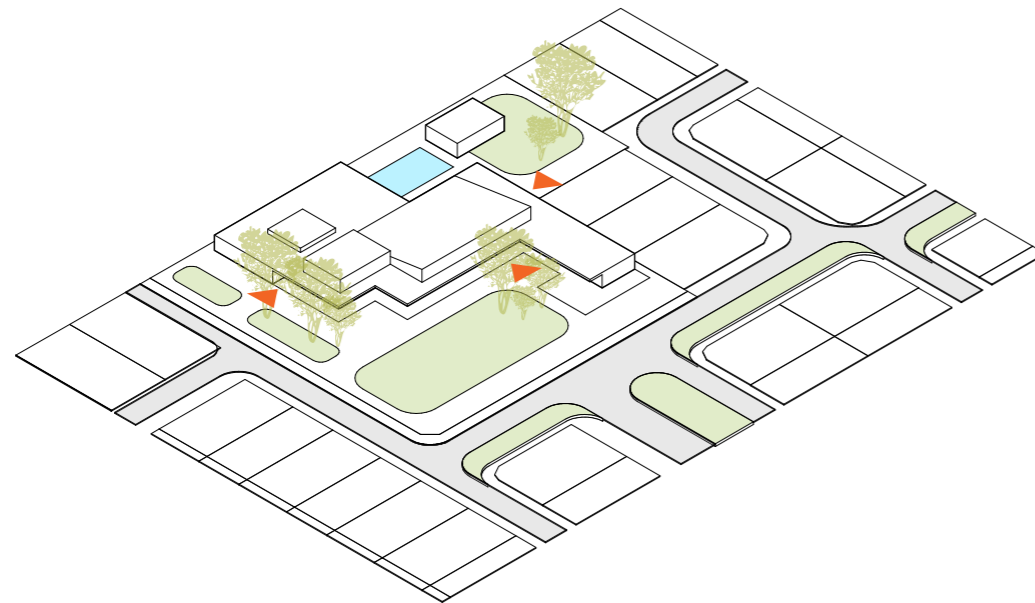
# MASSING DEVELOPMENT



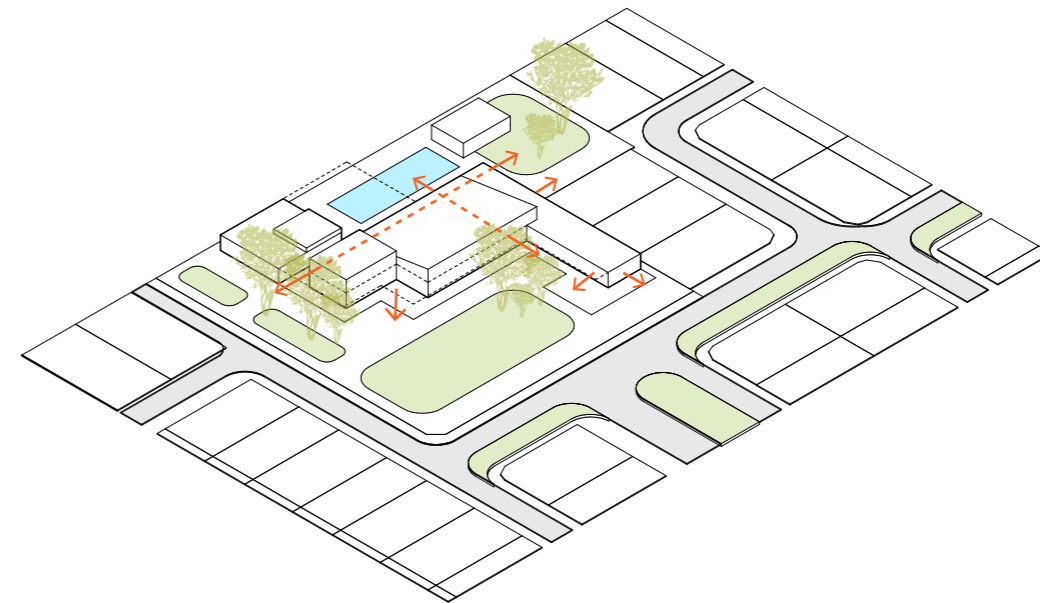
- > Creation of multiple **pockets of landscape zones** with different activity frameworks.
- > **Retention of key trees** and introducing **unifying canopy** that meander



- > Various functions arranged to **break the massing**.



- > **Connecting open spaces** from the facilities complex to the **broader development**.



- > Carving building footprint to enhance **visual connections between internal spaces and open spaces**.

## FACILITIES - DESIGN PRINCIPLES



- > **Blurring the boundary** between indoor and outdoor amenities
- > **Integrating landscape** and nature into the building design

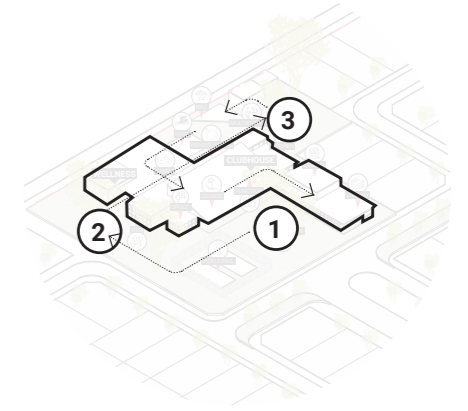


- > Enhancing **transparency between spaces**
- > Integrating as much **natural light and ventilation** as possible



- > **Raw and honest** materiality
- > Calm and **simple geometries**

# FACILITIES - MOMENTS



① North Entry

Dense Native Landscape through Entry Experience



② West Entry

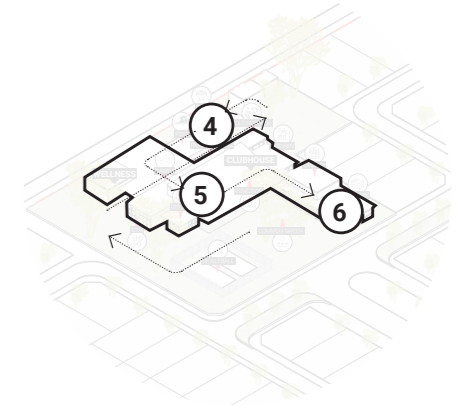
Covered Outdoor Living Space in The Landscape



③ East Entry

Outdoor Bar Blending in with The Trees

# FACILITIES - MOMENTS



## ④ Pool Terrace

Materiality and Building Elements to Enhance Relaxing Experience



## ⑤ Function

Volume with Abundant Natural Light + Effective Natural Ventilation



## ⑥ Terrace and Library

Bringing in Landscape to The Building Element and Expanding Terraces to The Landscape

## CLUBHOUSE MAIN ENTRY (NORTH)



**Large communal open space** with ample of outdoor seating zones at the main entry...

Celebrating **existing Sheoaks and grasstrees** in the north courtyard...

Outdoor deck as an extension of internal reading rooms and **gathering space**...

Implementing **coherent textural feature elements** on both architectural and landscape design...

**Expressed volume** to the overall massing expression...

## VIEW FROM COMMUNITY GARDEN TO BBQ AND POOL PAVILION



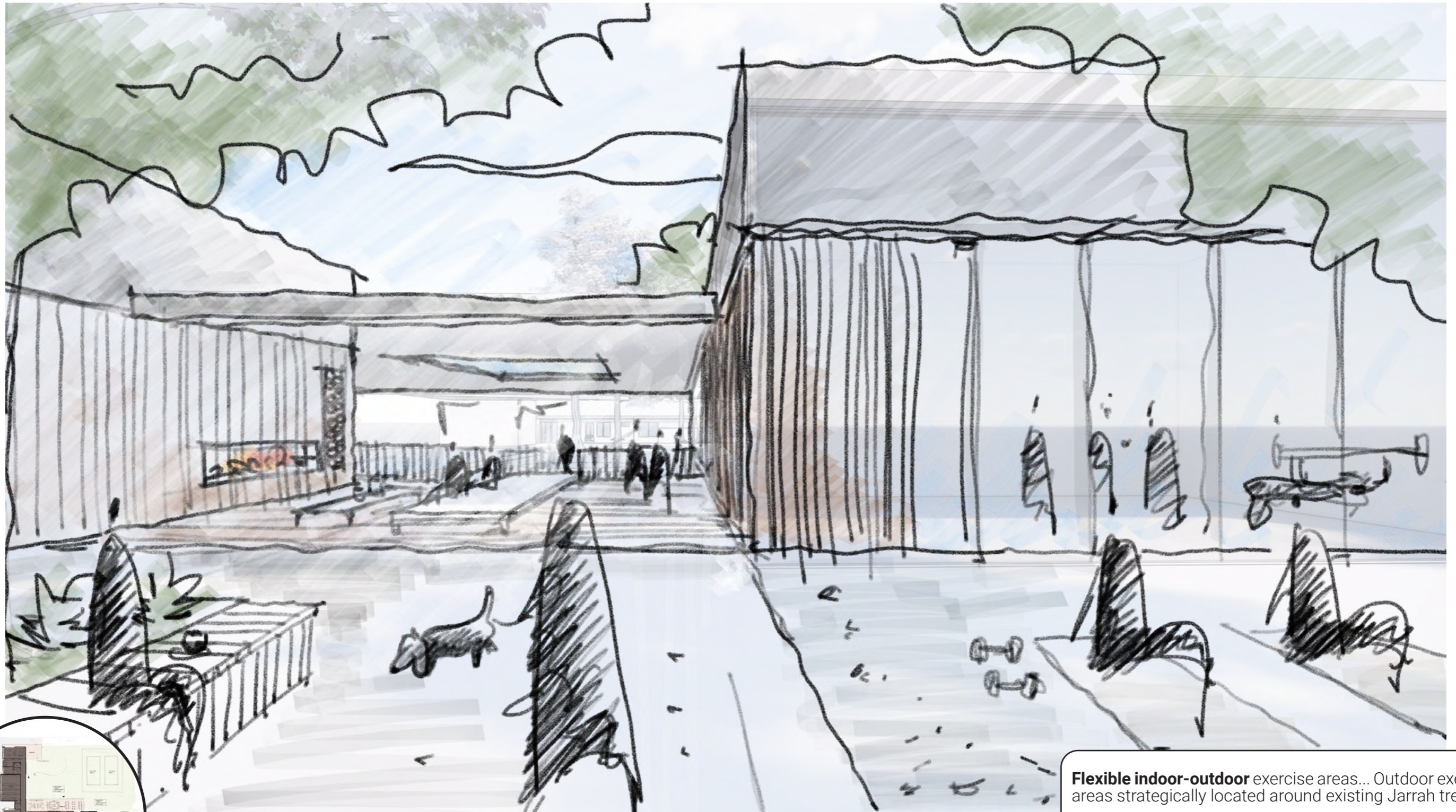
Designing the building around the **existing Tuart trees**...

Strategic **access to the northern light and shading** where required...

**Connecting multiple open spaces:** outdoor communal facilities such as Pool Terrace, Outdoor Bar, Communal Garden and ample outdoor seating zones...

**Visual connection** between internal spaces to open spaces...

## OUTDOOR LOUNGE AND EXERCISE AREA

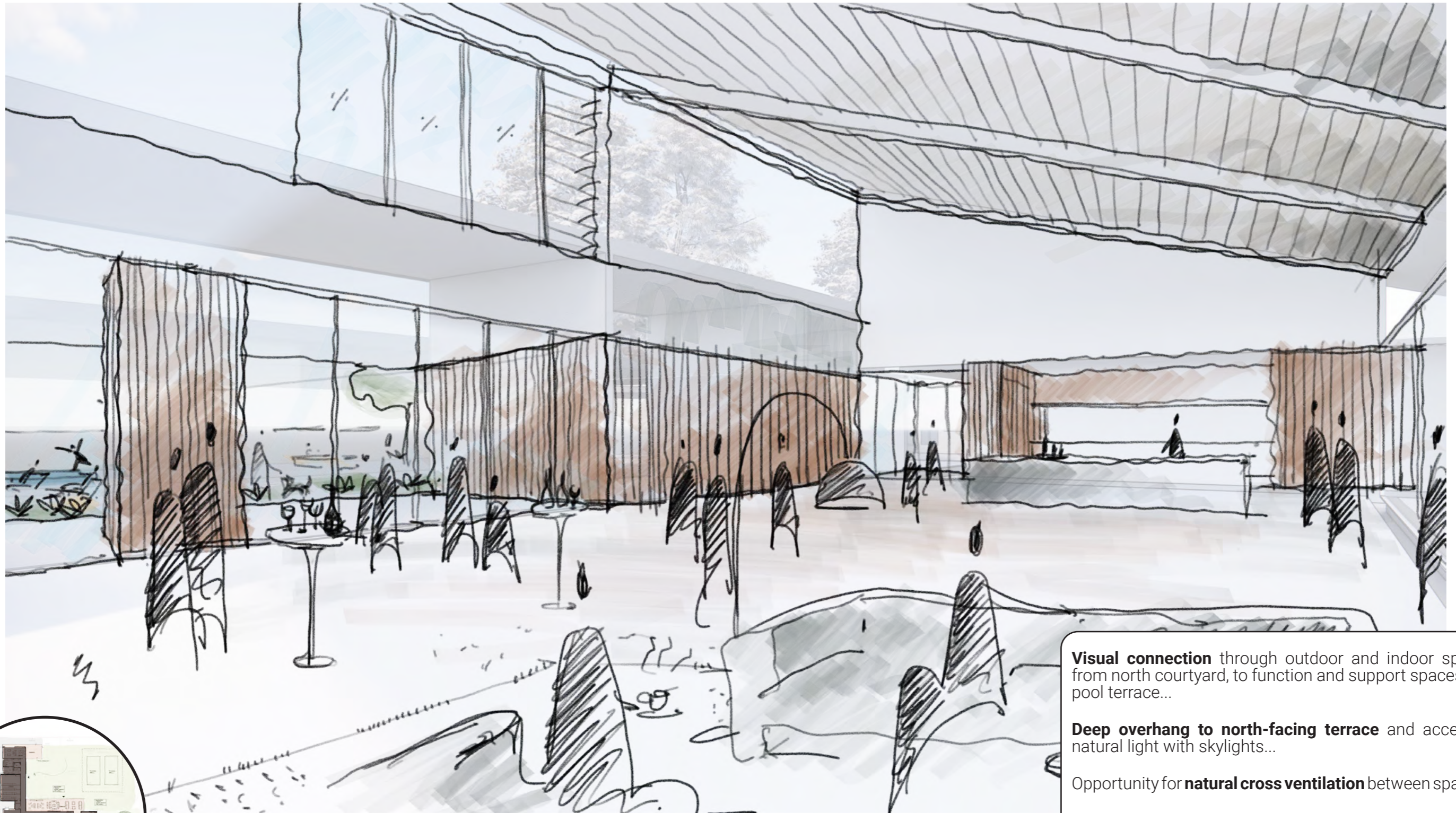


**Flexible indoor-outdoor** exercise areas... Outdoor exercise areas strategically located around existing Jarrah trees...

Outdoor **covered multipurpose space** as a meeting place...

**Integrated seating** into the landscape planters and other elements.

# FUNCTION SPACE



**Visual connection** through outdoor and indoor spaces, from north courtyard, to function and support spaces, and pool terrace...

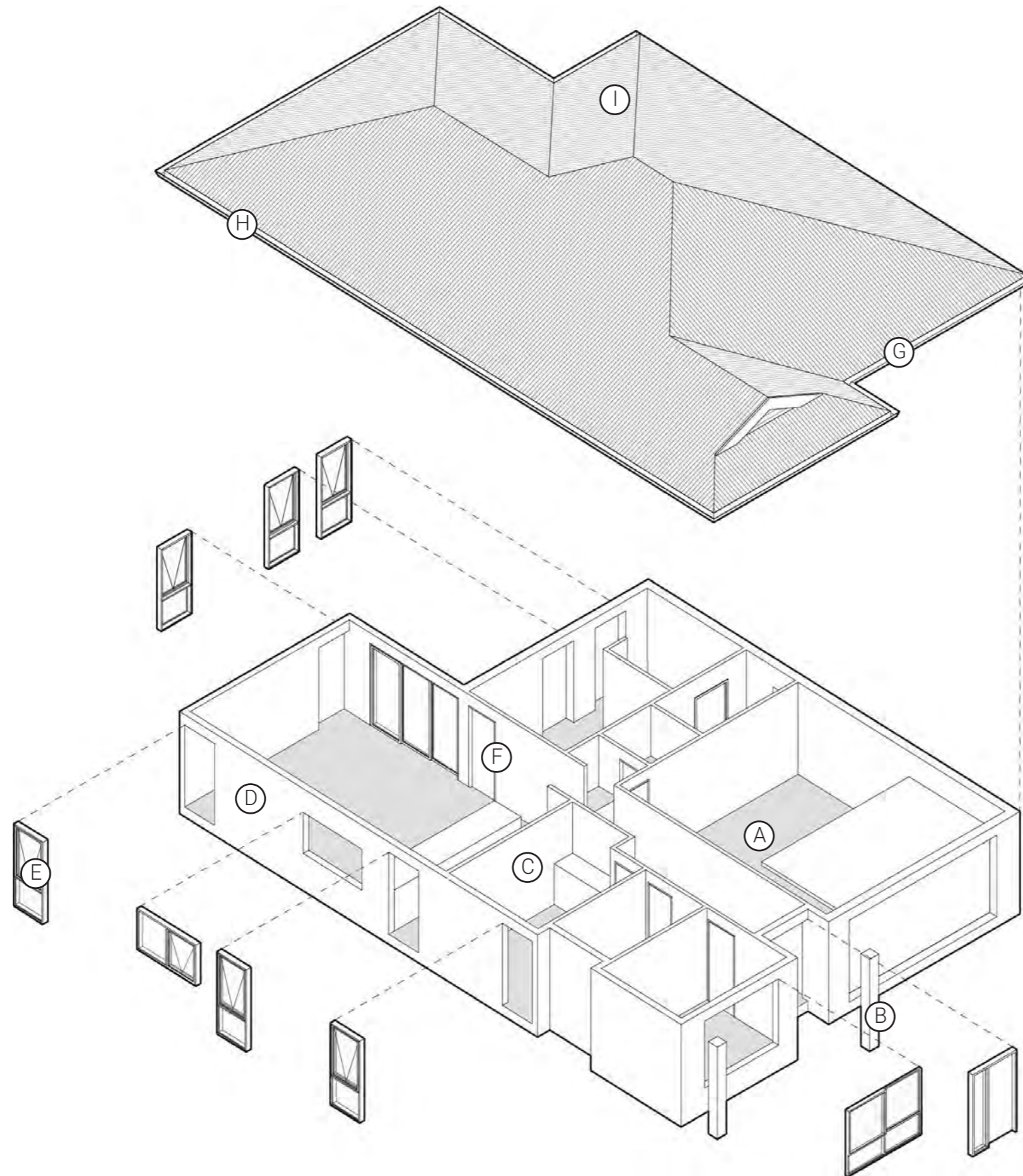
**Deep overhang to north-facing terrace** and access to natural light with skylights...

Opportunity for **natural cross ventilation** between spaces...

Push and pull of **spatial volume** to create interests, large space for various/flexible uses....

Play of **materiality and datums** for wayfinding and control the perception of scale....

# HOUSES - CONSTRUCTION DIAGRAM



①



Timber-framed corrugated metal roof

⑧



Eaves gutter

⑦



Plasterboard ceiling/ fibre-cement external soffit

⑥



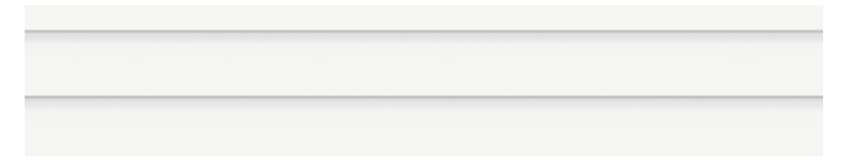
Painted solid/ hollowcore timber doors

⑤



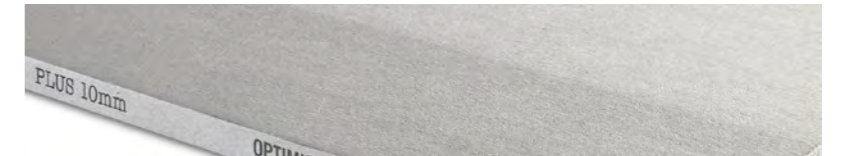
Powdercoated aluminium-framed windows and doors

④



Fibre-cement painted plain/textured cladding

③



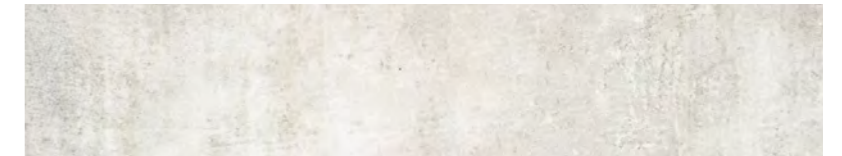
Internal / MR Plasterboard on timber stud frame

②



Fibre-cement clad steel/ timber columns

①



Tiles / carpet / composite decking on concrete slab

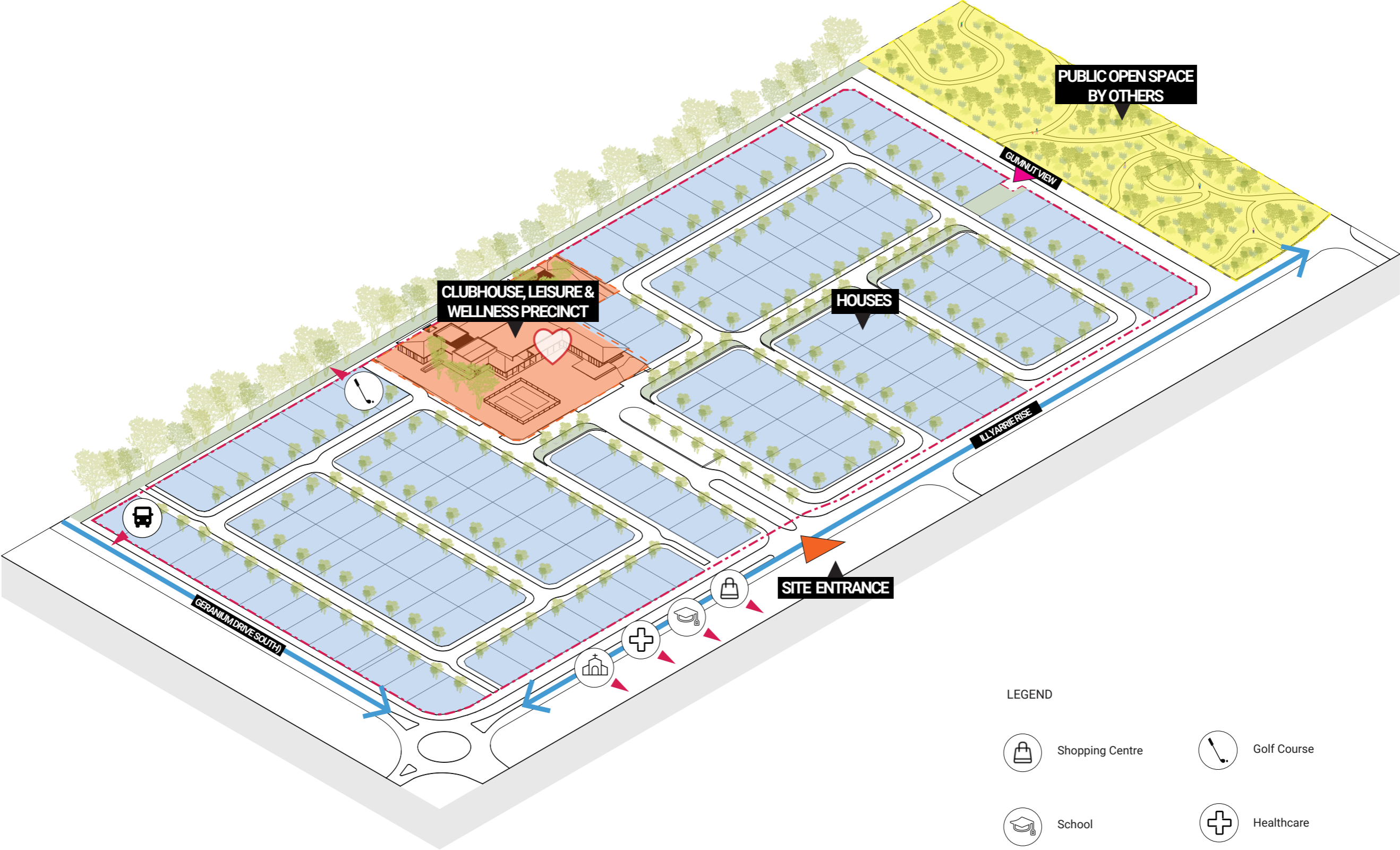
#### PRINCIPLE 4

---

## FUNCTIONALITY + BUILD QUALITY

*Good design meets the needs of users efficiently and effectively, balancing functional requirements to perform well and deliver optimum benefit over the full life-cycle.*

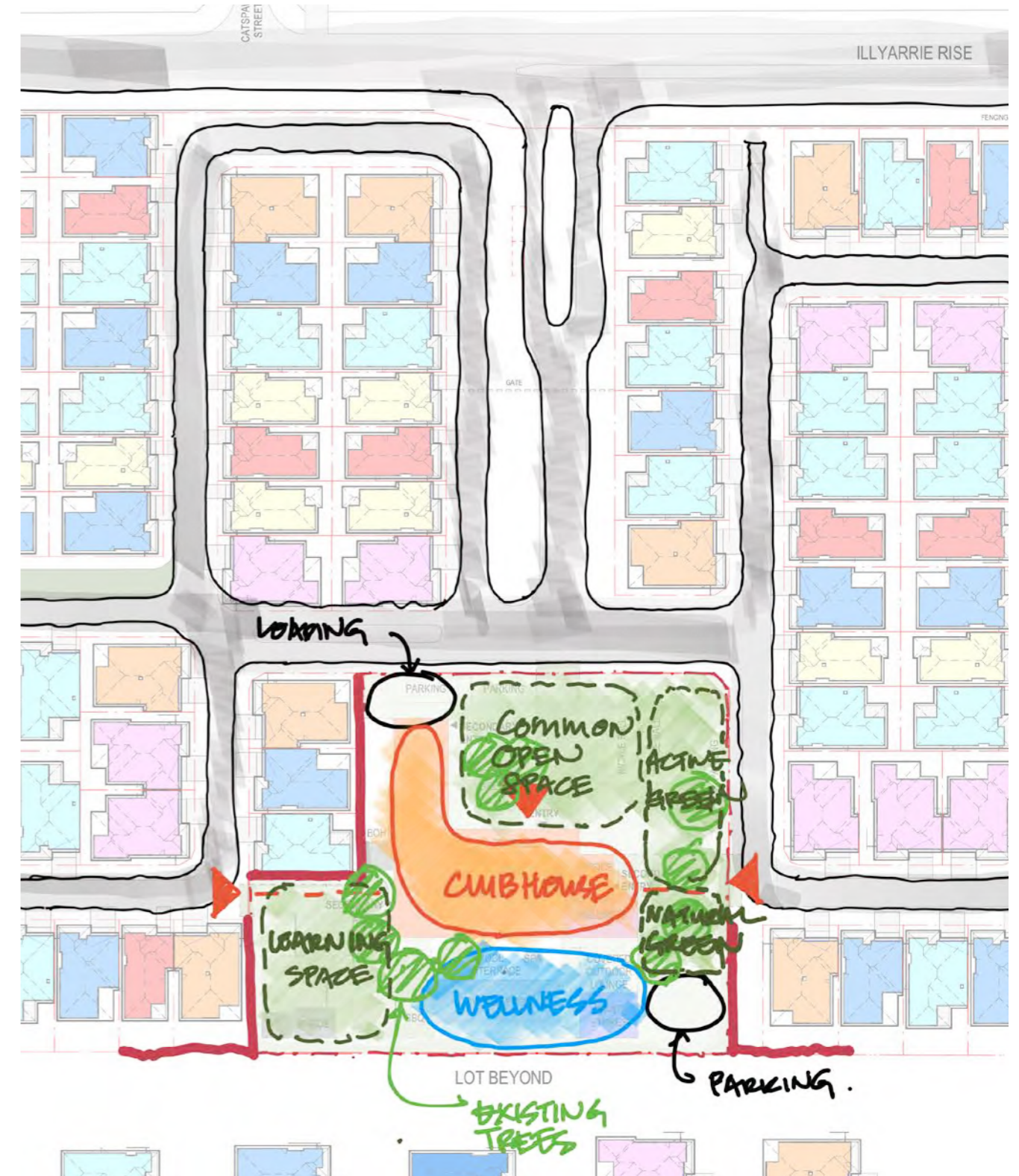
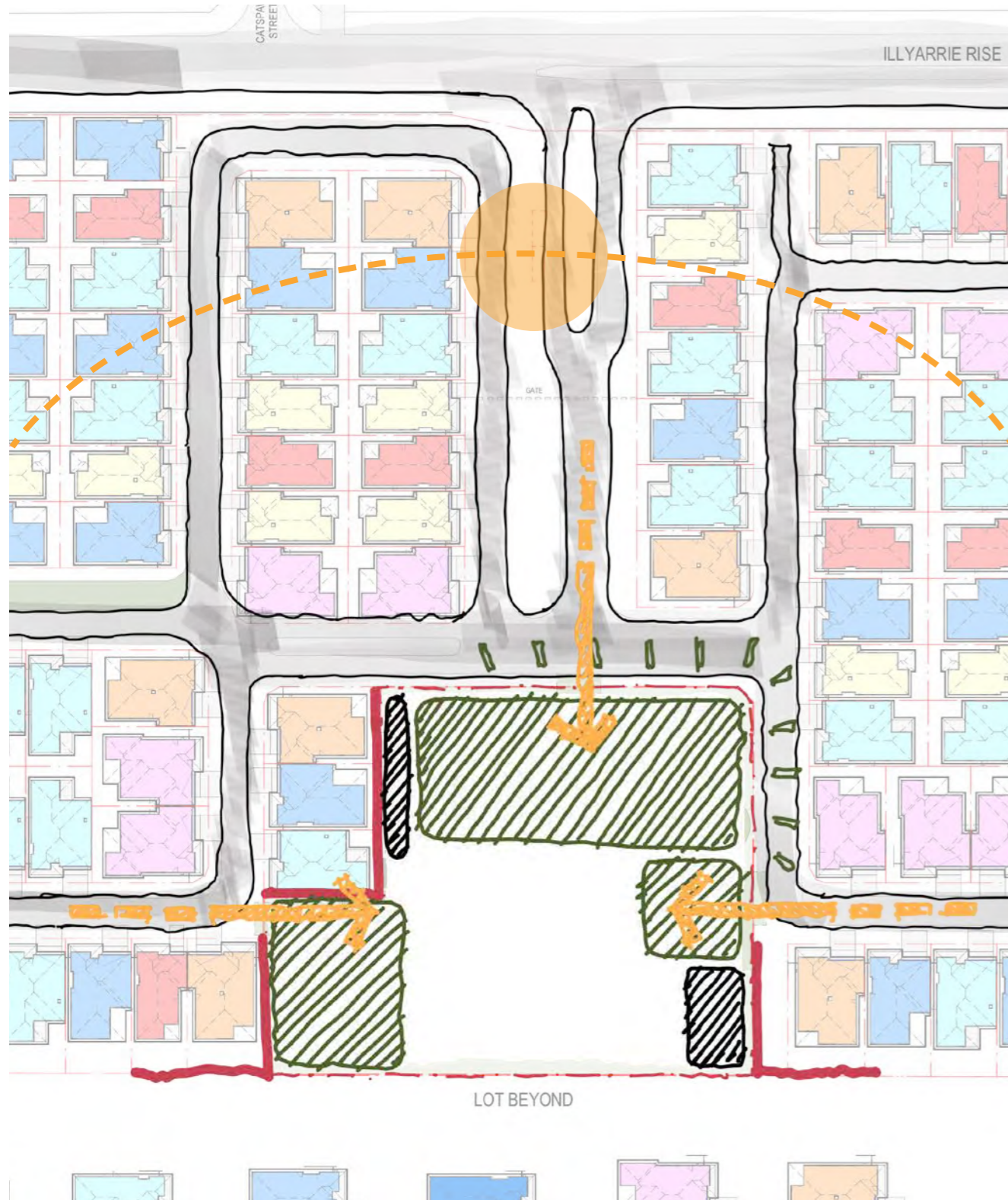
# ZONING



LEGEND

- |  |                        |  |                  |
|--|------------------------|--|------------------|
|  | Shopping Centre        |  | Golf Course      |
|  | School                 |  | Healthcare       |
|  | Religious Institutions |  | Public Transport |

# FACILITIES PLANNING STRATEGY



PROGRAM



LEGEND

- Visitor Parking
- Loading / Service

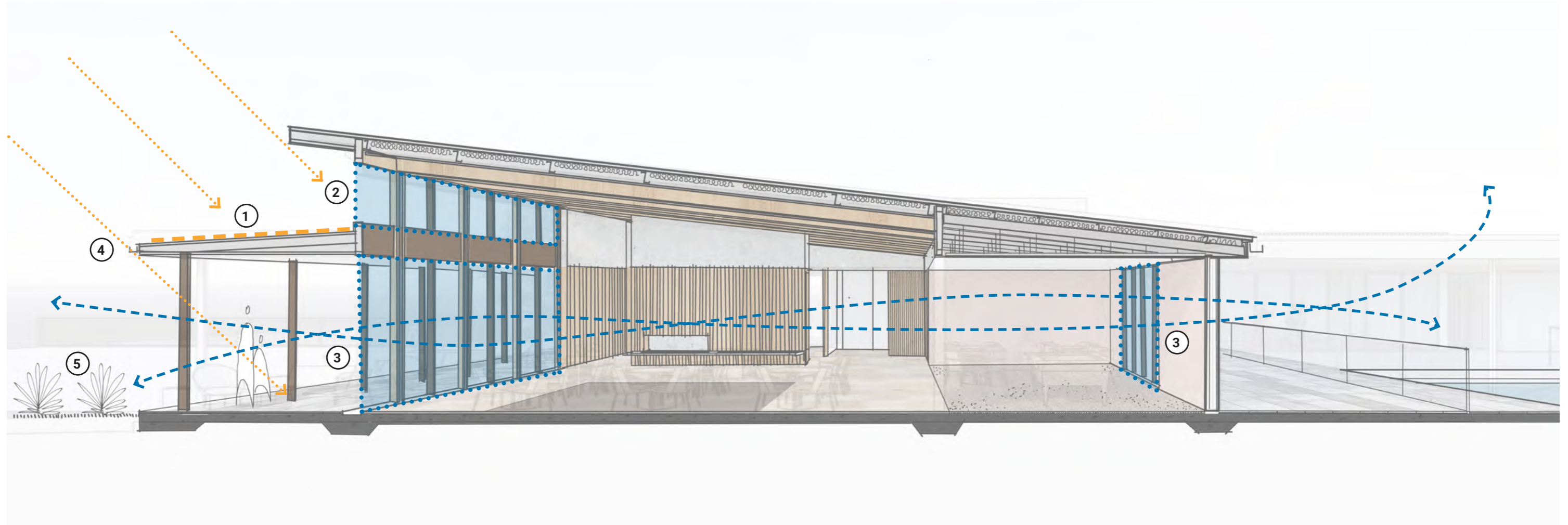
## PRINCIPLE 5

---

# SUSTAINABILITY

*Good design optimises the sustainability of the built environment, delivering positive, environmental, social and economic outcomes.*

# PASSIVE DESIGN STRATEGY



① Solar panels



② North-facing skylight with integrated solar shading



③ Natural cross ventilation

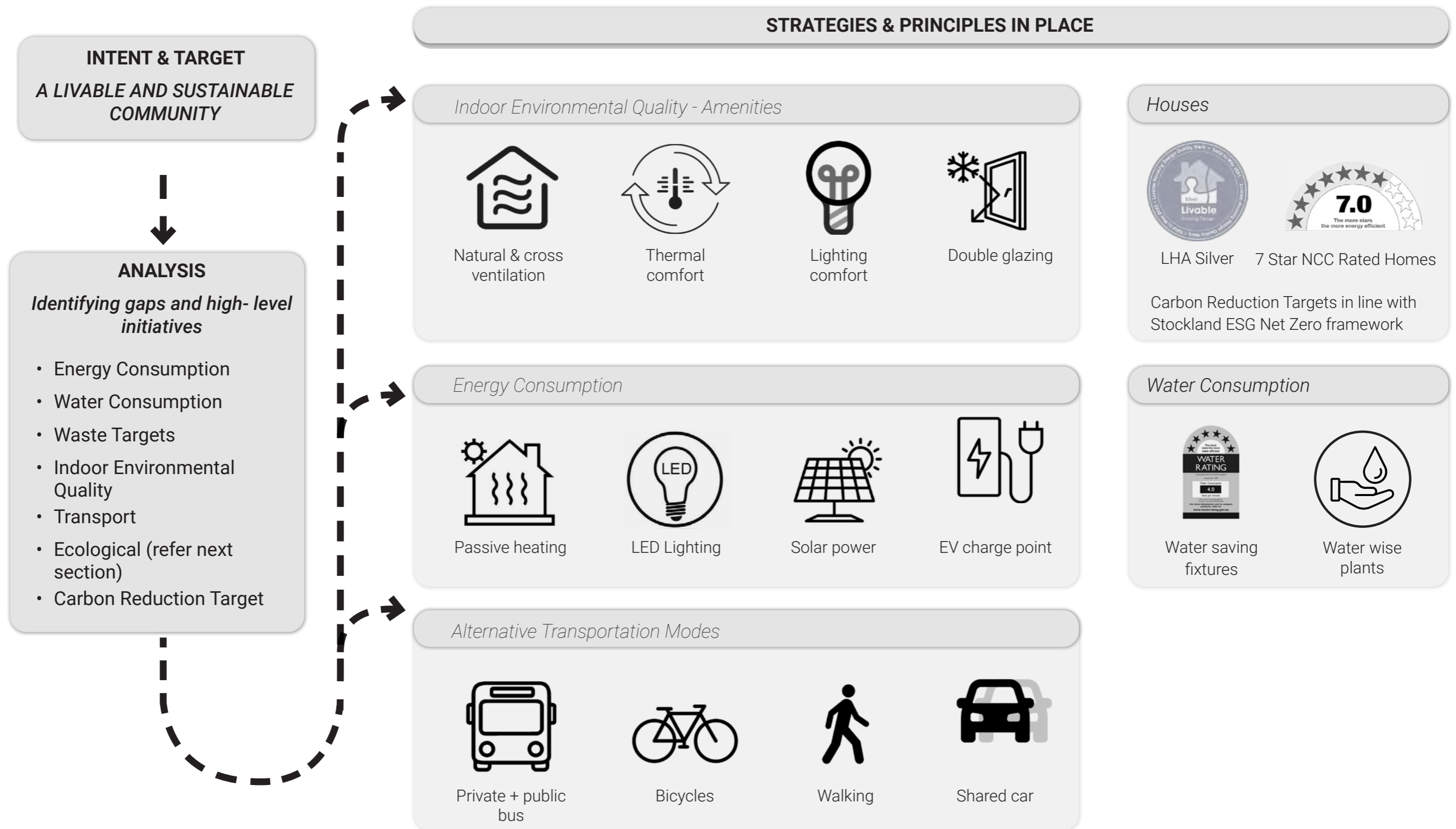


④ Deep Overhang for solar control



⑤ Provision for rainwater harvesting

# ENVIRONMENTAL SUSTAINABILITY INITIATIVES



## PRINCIPLE 6

---

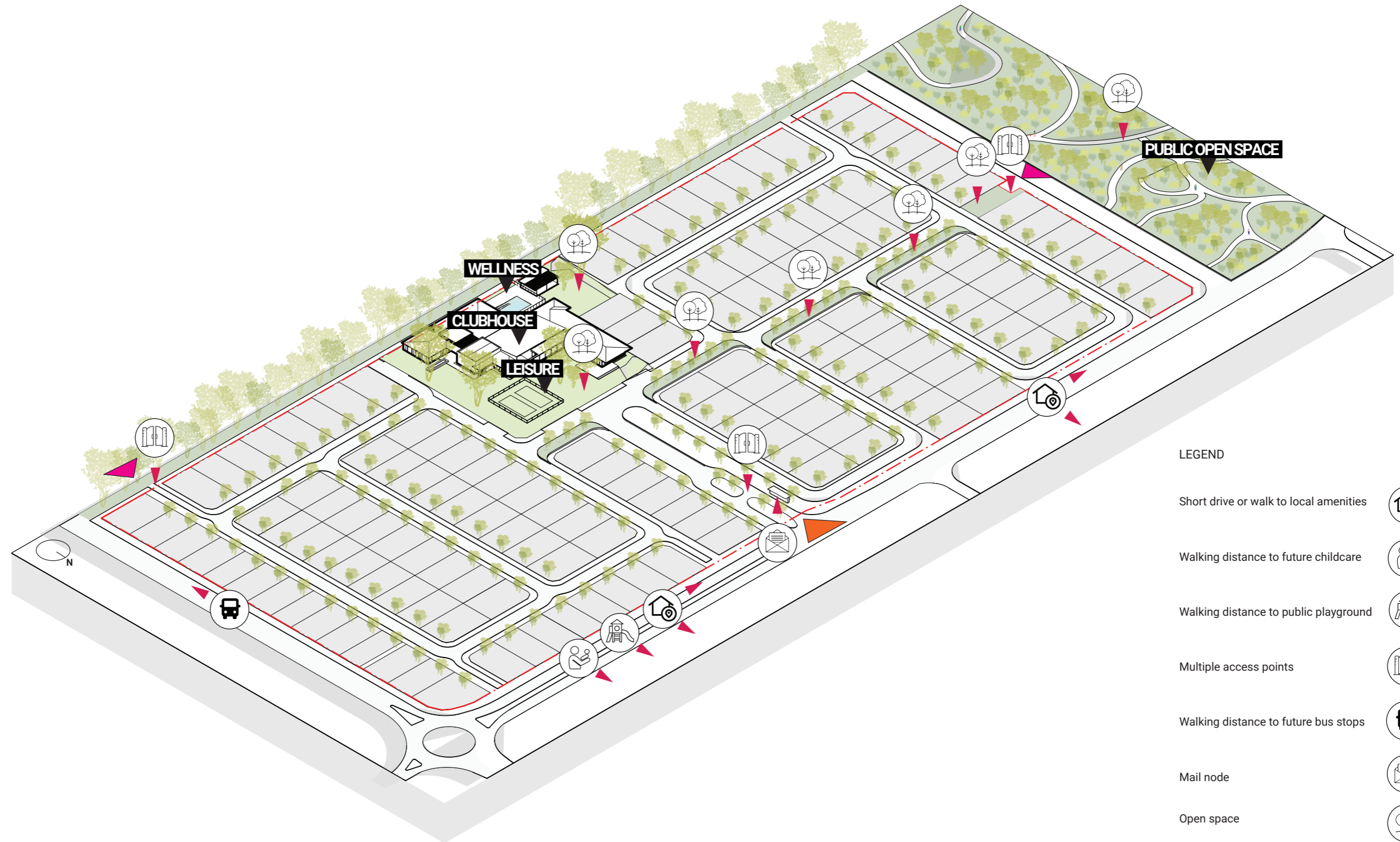
# AMENITY

*Good design provides successful places that offer a variety of uses and activities while optimising internal and external amenity for occupants, visitors and neighbours, providing environments that are comfortable productive and healthy.*

# EXTERNAL AMENITY OFFERINGS



# DEVELOPMENT AMENITY OFFERINGS



## LEGEND

- Short drive or walk to local amenities
- Walking distance to future childcare
- Walking distance to public playground
- Multiple access points
- Walking distance to future bus stops
- Mail node
- Open space
- Site entrance

## PRINCIPLE 7

---

# LEGIBILITY

*Good design results in buildings and places that are legible, with clear connections and easily identifiable elements to help people find their way around.*

# WAYFINDING AND CONNECTIVITY



## LEGEND

- Site Entrance 
- Pedestrian Access 
- Provision for Access 
- Primary and Secondary Road 
- Local Street 
- Pedestrian Path 
- BOH/Service Path 

# TREE HIERARCHY PLAN



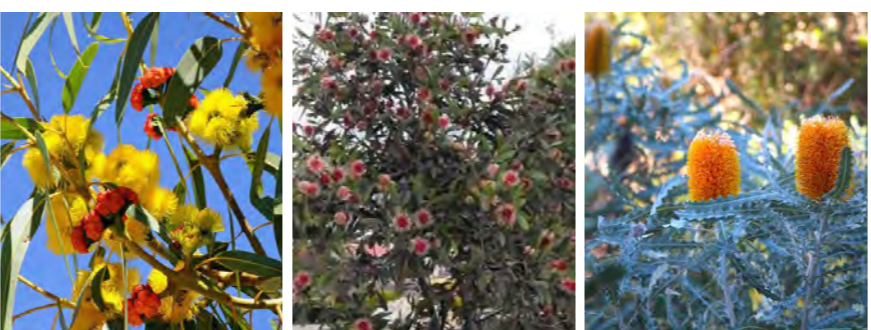
**Primary/Entry Road**- Corymbia calophylla (Marri), Eucalyptus marginata (Jarrah) and Eucalyptus erythrocorys dwarf (Illyarrie) to verges, defining primary/ entry avenue.



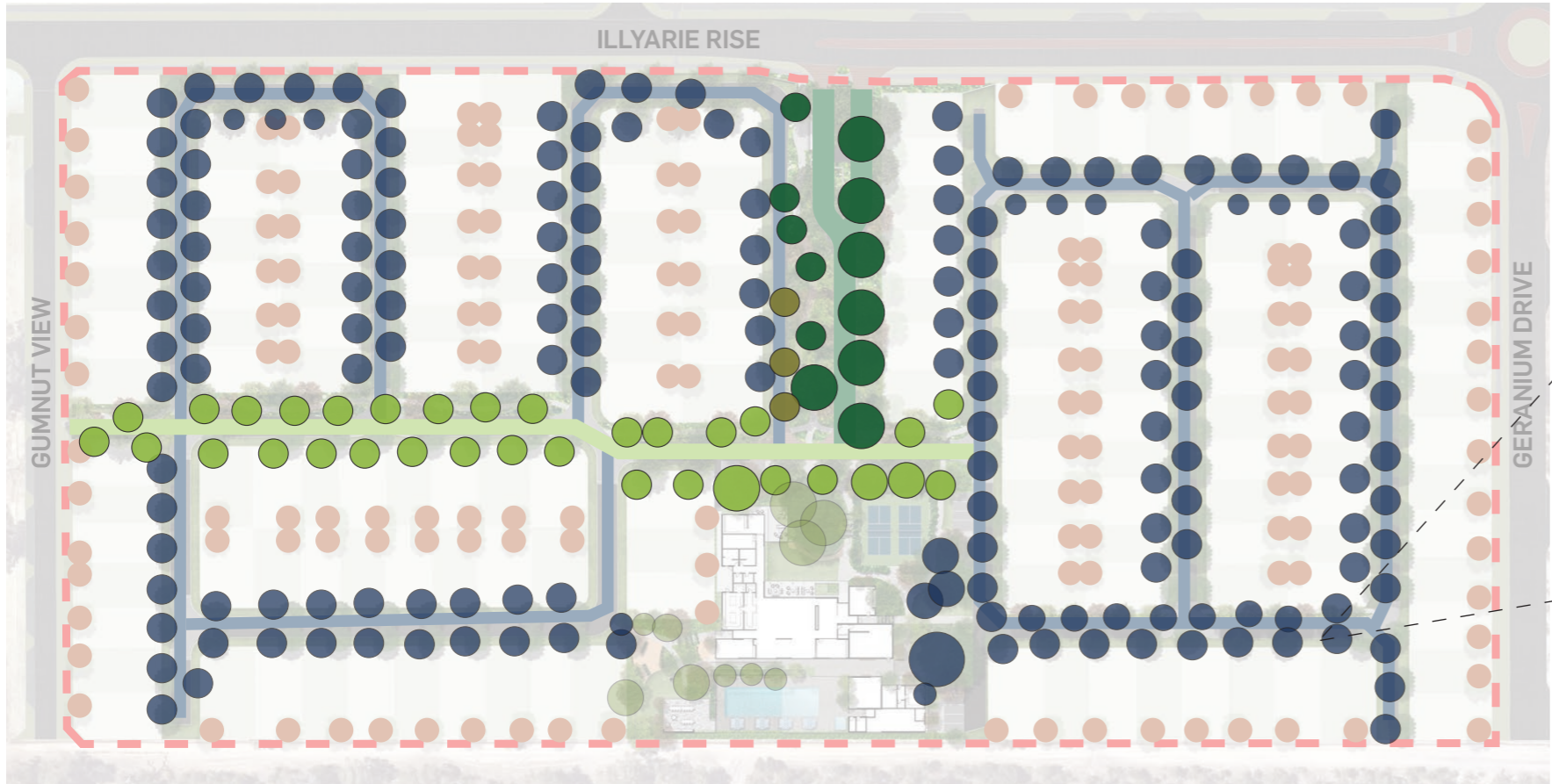
**Local Streets** - Corymbia ficifolia (Baby Orange), Corymbia ficifolia (Dwarf Orange), and Corymbia ficifolia (Dwarf Red).



**Secondary Road** - Eucalyptus tottiana (Prickly Bark), Eucalyptus decipiens (Limestone Marlock, Redheart), and Eucalyptus erythrocorys (Illyarrie).



**Residential Lot (Backyard)** - Eucalyptus erythrocorys dwarf (Illyarrie), Hakea laurina Pin-cushion Hakea and Banksia ashbyi (Ashbys Banksia).



Feature planting along the verges help to create identity and character. Helping to distinguish one street from the next.