

## LEGEND

— DAP Boundary

## PROVISIONS

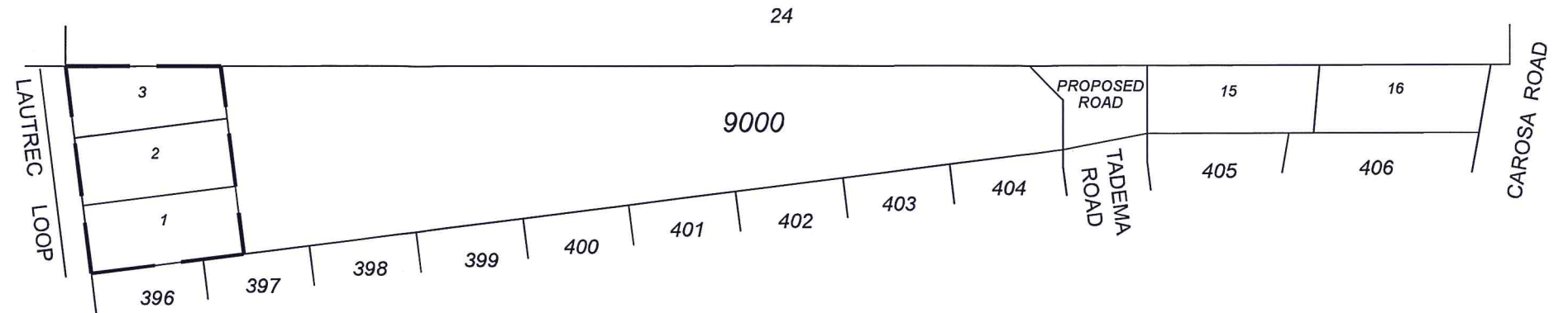
In addition to the provisions provided below, the provisions of the City of Wanneroo District Planning Scheme No. 2 & the R-Codes apply.

### BUSHFIRE PROTECTION:

Buildings on Lots 1, 2 & 3 to be constructed in accordance with the Australian Standard AS 3959

The applicable BAL Ratings for the lots are:

- Lot 1 BAL 12.5
- Lot 2 BAL 19
- Lot 3 BAL 19



This Detailed Area Plan has been certified by Council under clause 9.14.3 (d) of District Planning Scheme No. 2

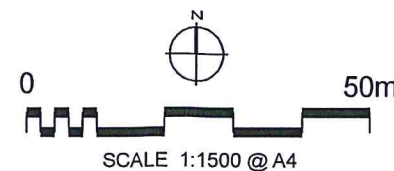
Manager, Planning Implementation  
City of Wanneroo

Date

20/01/15

## DETAILED AREA PLAN No. 1

LOT 9017 (No. 17) LAUTREC LOOP  
ASHBY  
CITY OF WANNEROO



**GRAY & LEWIS**  
LAND USE PLANNERS  
Suite 5, 2 Hardy Street  
South Perth, WA 6151  
T (08) 9474 1722  
F (08) 9474 1172  
perth@graylewis.com.au