

SCHOOL PARKING

School road safety awareness



Statutory No Stopping areas

Statutory No Stopping areas also occur under the provisions of the Road Traffic Code 2000. These areas may or may not be sign posted.

It is an offence to stop or park a vehicle:

- Near a children's crossing or pedestrian crossing
- At or near a bus stop
- That obstructs access to a pathway or driveway.

Penalties and fines

Please be aware that penalties may apply for:

- Park/stop on a NO STOPPING area (stopping on a road during the prohibited period)
- Stopping/parking on the footpath
- Parking in a NO PARKING area
- Double parking
- Park/stop on a nature strip (verge) without the owner's consent
- Park/stop such that the vehicle causes obstruction in a public place
- Parking facing the wrong way against traffic flow
- Park/stop on a median strip
- Park/stop contrary to signage



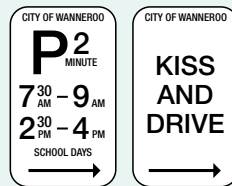
Warning signs

Children warning and 40km/hour school speed zone signs are the responsibility of Main Roads WA and requests for additional signs or sign damage reports should be directed to them on 9323 4111 or 1800 800 009.

KISS and DRIVE zones typically allow parents to pick up and drop off at designated areas.

Prohibition signs

Parking prohibitions are imposed to regulate and modify parking patterns. Their main function is to ensure that potential vehicle/pedestrian conflicts are eliminated.



Vehicles can not be left unattended or exceed the time limit.



A vehicle cannot stop to set down or pick up passengers.



Children warning and 40km/hour school speed zone signs are the responsibility of Main Roads WA.

Parking concerns in school areas

It is not practical for schools to provide enough parking for everyone, it is the **driver's responsibility to park their car legally** and to help ease parking issues and keep the school's students safe.

Safety concerns in and around schools

- Speeding motorists
- Park/stop on footpaths
- Park/stop across driveways
- Park/stop on median strips (including flush medians)
- Disregard of parking signage.

What can parents do?

- Always be aware of children
- Walk or cycle to school to drop off or collect children
- Try and use nearby parking facilities such as reserves or shopping centres, and walk a short distance to the school
- Plan your trip so you arrive on the school side of the road
- Try to arrive before peak pick up times
- Avoid leaving your vehicle for long periods
- Form a Road Wise committee (Contact your Principal and P&C).

What can teachers do?

- Educate students about procedures around the school precinct
- Encourage children to educate their parents or carers about what they should and shouldn't do when parking near the school.

Rules of parent parking

DO

- Park further away and walk
- Ask permission to park on someone's verge
- Obey all street signs
- Use Kiss and Drive to drop off and pick up (vehicle cannot be left unattended or exceed the time limit)
- Be courteous
- Leave the car at home if possible.

DO NOT

- Block driveways
- Park/stop on footpaths
- Obstruct children's crossings
- Park/stop on median strips
- Park/stop on verges without permission
- Park/stop within 10m of an intersection
- Park facing against the flow of traffic
- Double park.



Parking problems

The City of Wanneroo's Traffic and Ranger Services are more than happy to help with any parking and safety concerns near your school.

For advice or help please contact 9405 5000 or visit wanneroo.wa.gov.au

Other helpful contacts

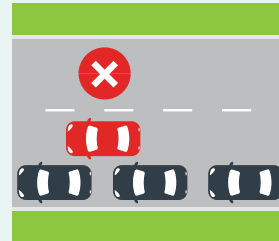
Roadwise - 9213 2066 or walga.asn.au

Main Roads WA - 9323 4111 or mrwa.wa.gov.au



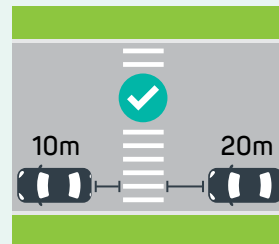
Footpath, driveway or nature strip

You must not stop across a driveway, footpath or nature strip for any reason. Fines apply.






Double parking

You must not stop on the road alongside a car that is parked at anytime. Fines apply.



Pedestrian crossing

You must not stop on or within 20 metres before a pedestrian crossing or 10 metres after a crossing (unless a sign allows you to park there). Fines apply.

23 Dundobar Road, Wanneroo, WA 6065
Locked Bag 1, Wanneroo, WA 6946
T (08) 9405 5000 After Hours 1300 13 83 93
E enquiries@wanneroo.wa.gov.au
wanneroo.wa.gov.au    

This flyer is available in alternative formats upon request.