

DESIGNED (NAME)	09/02/15	DRAWN (NAME)	09/02/15
MAURISTE J. DAVID		CLAUDE AMBROGIO	
CONSULTANT (COMPANY)		CONSULTANT (COMPANY)	
CHECKED (NAME)		APPROVED (NAME)	
CLAUDE AMBROGIO		XXX	
CONSULTANT (COMPANY)		CONSULTANT (COMPANY)	

**Lycopodium**  
 Lycopodium Infrastructure Pty Ltd ABN: 57 130 875 950  
 Level 4, 1 Adelaide Terrace, East Perth, Western Australia 6004  
 T +61(0)8 6210 5222 www.lycopodium.com.au

This drawing and its contents are confidential, are subject to return on demand and may not be copied or disclosed to any third party or used directly or indirectly for any other purpose than as determined in writing by Lycopodium Infrastructure Pty Ltd.

**CITY OF WANNEROO**  
 INFRASTRUCTURE

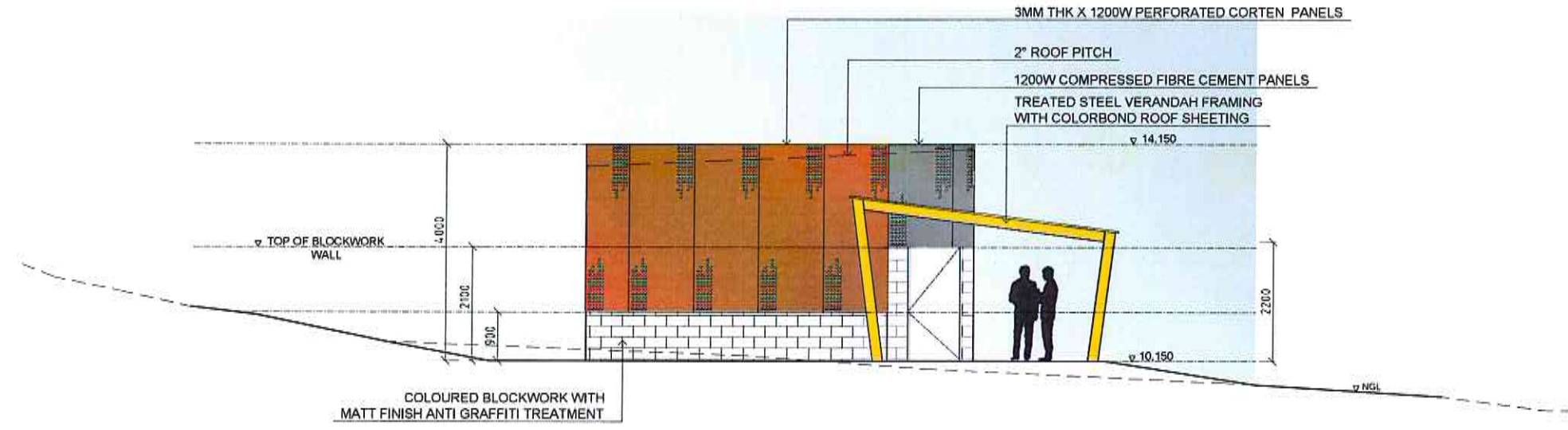
**FISHERMANS HOLLOW**  
 TOILET CHANGE BLOCK  
 NEWMAN PARK, 8 BRAZIER ROAD, PICNIC COVE PARK,  
 84 WILKIE AVE., YANCHEP WA

**SITE PLAN**  
 SHEET 1 OF 4

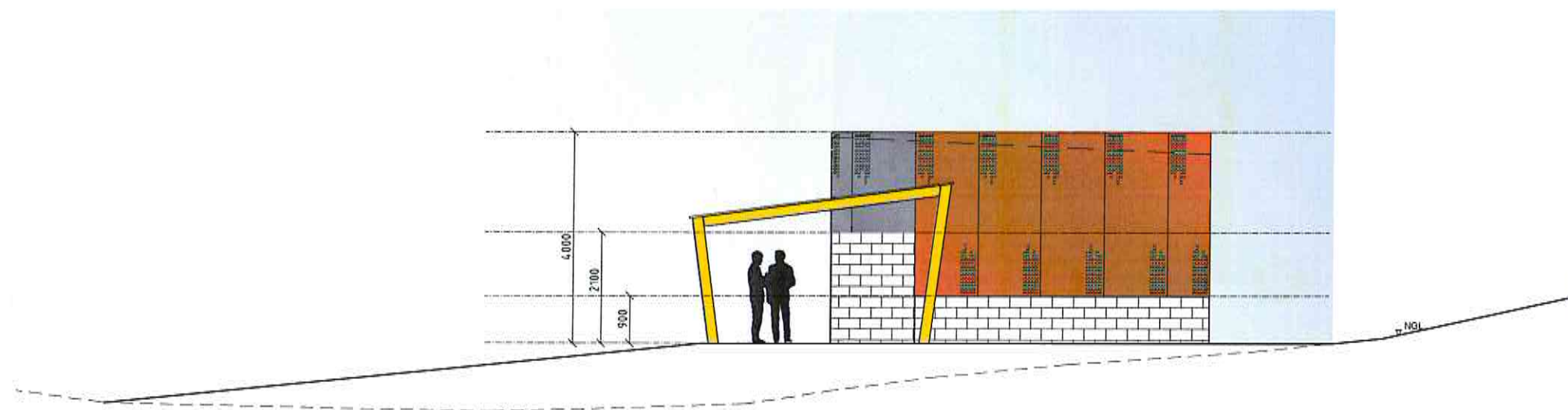
CLIENT: WANNEROO COMMUNITY PROGRAMS & SERVICES  
 FILE No: XXXXX  
 PROJECT No: PR-2458

DATE: 09/02/15  
 SHEET: 1  
 REVISION: A1  
 ORIGINAL DSC SIZE: A1

NO.	REVISION	BY	DATE	AUTH	NO.	REVISION	BY	DATE	AUTH	SCALE:	SUPPLIED:	DRAWN:	AUTHORIZED:	WARRANTY:
1	ISSUED FOR PLANNING APPROVAL	MO	01/02/2015	CA						1:100 @ A1	CITY OF WANNEROO (2014)	LYCOPODIUM INFRA (2014)	XXXXX	XXXXX
										SCALE IN METRES	XXXXX	XXXXX	XXXXX	XXXXX
										LOCAL	LOCAL	XXXXX	XXXXX	XXXXX
											XXXXX	XXXXX	XXXXX	XXXXX



ELEVATION 1 (CARPARK VIEW)



ELEVATION 2

DESIGNED (NAME) CLAUDE AMBROGIO	DATE 09/02/15	CHECKED (NAME) CLAUDE AMBROGIO	DATE 09/02/15
DRAWN (NAME) MARISTELA DAVID	DATE 09/02/15	APPROVED (NAME) XXX	DATE XX/01/15

**Lycopodium**  
 Lycopodium Infrastructure Pty Ltd  
 Level 4, 1 Adelaide Terrace, East Perth, Western Australia 6004  
 T +61 8 9 6210 5222 www.lycopodium.com.au

This drawing and its contents are confidential, are subject to return on demand and may not be copied or disclosed to any third party or used directly or indirectly for any other purpose than as determined in writing by Lycopodium Infrastructure Pty Ltd.

**CITY OF WANNEROO**  
 INFRASTRUCTURE

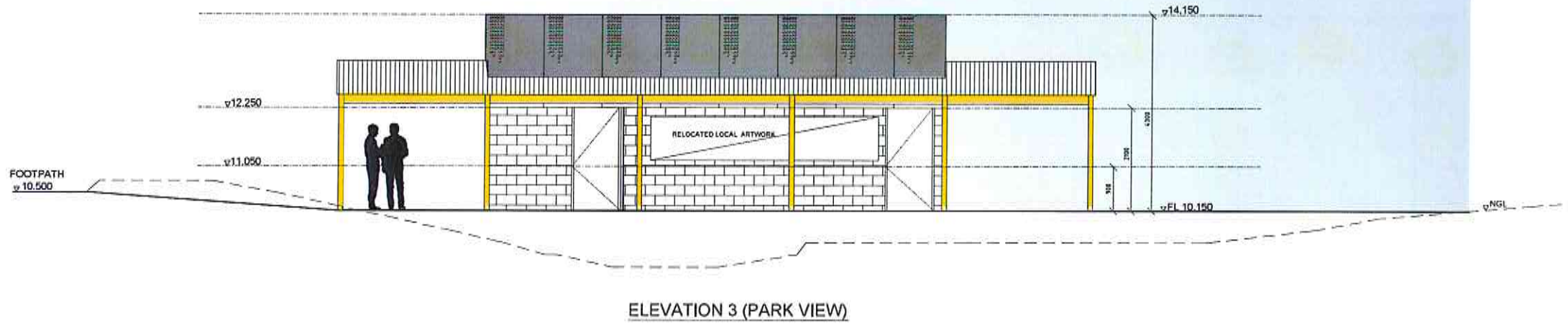
**FISHERMANS HOLLOW**  
 TOILET CHANGE BLOCK  
 NEWMAN PARK, 8 BRAZIER ROAD, PICNIC COVE PARK,  
 64 WILKIE AVE., YANCHEP WA

ELEVATION SHT 1  
 SHEET 3 OF 4

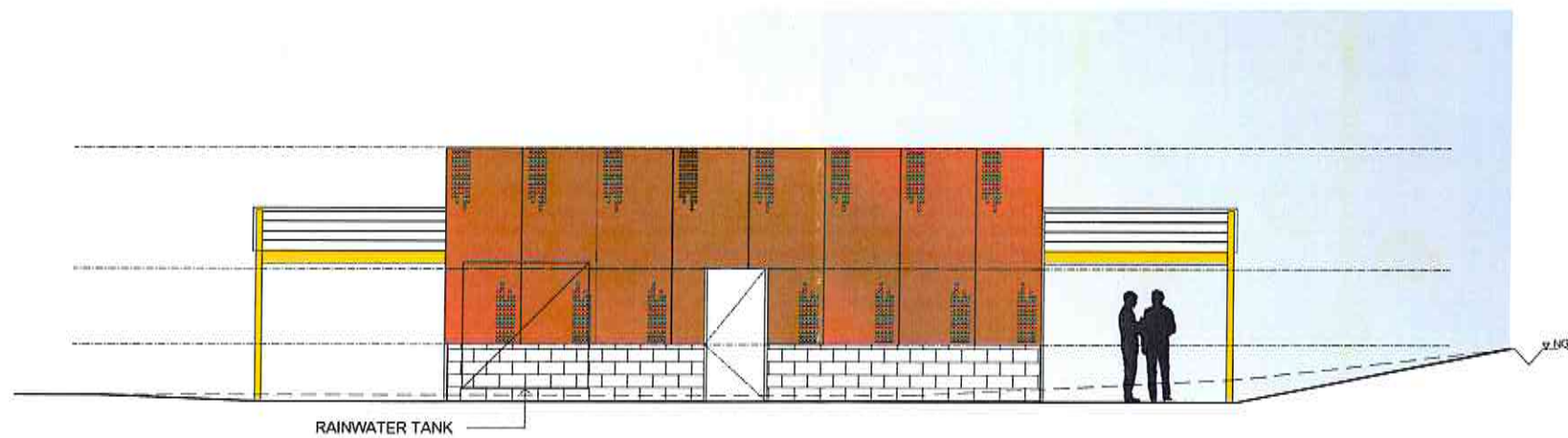


NO.	REVISION	BY	DATE	AUTH	NO.	REVISION	BY	DATE	AUTH	NO.	SCALE	SURVEYED	DRAWN	APPROVED	FILE NO.
A	ISSUED FOR PLANNING APPROVAL	MC	16/02/2015	CA							1 : 50 @ A1	CITY OF WANNEROO	LYCOPODIUM INFRA		00000
											SCALE IN METRES	SUPERVISOR	ENGINEER	MANAGER INFRASTRUCTURE PROJECTS	PROJECT NO.
											LOCAL	XXXX	XXXX	XXXX	PR - 2459
											LOCAL	BUILDING PROJECTS OFFICER	COORDINATOR BUILDING PROJECTS	DIRECTOR INFRASTRUCTURE	

3090-A03-A A1



ELEVATION 3 (PARK VIEW)



ELEVATION 4

DESIGNED (NAME) CLAUDE AMBROGIO	DESIGNED (DATE) 09/02/15	DRAWN (NAME) MARISTELA DAVID	DRAWN (DATE) 08/02/15
CHECKED (NAME) CLAUDE AMBROGIO	CHECKED (DATE) 09/02/15	APPROVED (NAME) XXX	APPROVED (DATE) XX/01/15
COMPANY (NAME) LYCOPodium		COMPANY (NAME) XXX	

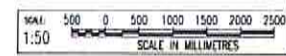
**Lycopodium**  
Lycopodium Infrastructure Pty Ltd  
Level 4, 1 Adelaide Terrace, East Perth, Western Australia 6004  
T +61 (0) 8 5210 5222 www.lycopodium.com.au

This drawing and its contents are confidential, are subject to return on demand and may not be copied or disclosed to any third party or used directly or indirectly for any other purpose than as determined in writing by Lycopodium Infrastructure Pty Ltd.

**CITY OF WANNEROO**  
INFRASTRUCTURE

**FISHERMANS HOLLOW**  
TOILET CHANGE BLOCK  
NEWMAN PARK, 8 BRAZIER ROAD, PICNIC COVE PARK,  
84 WILKIE AVE., YANCHEP WA

ELEVATION SHT 2  
SHEET 4 OF 4



No.	REVISION	BY	DATE	AUTH	No.	REVISION	BY	DATE	AUTH	SCALE	SCALE IN METRES	SUBMITTED	DATE	APPROVED	DATE	PROJECT No.
1	ISSUED FOR PLANNING APPROVAL	MD	18/02/2015	EA						1 : 50 @ A1		CITY OF WANNEROO	2014	LYCOPodium INFRA	2014	XXXXX
												DIRECTOR	2014	MANAGER INFRASTRUCTURE PROJECTS	2014	PR - 2459
												DESIGNER	2014	COORDINATOR BUILDING PROJECTS	2014	
												LOCAL	2014	DIRECTOR INFRASTRUCTURE	2014	

3090-A04-A A1