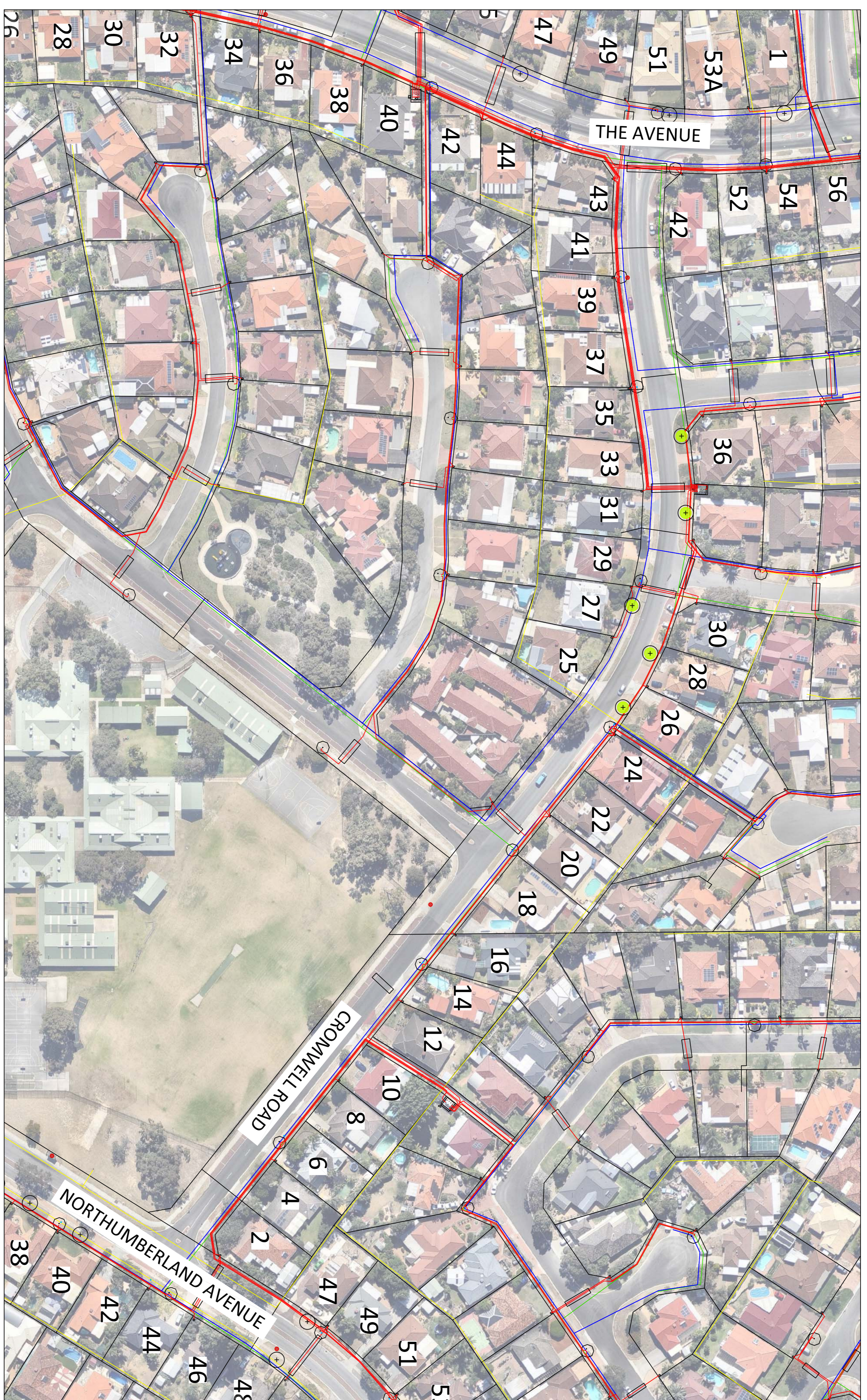


CROMWELL ROAD

TREE TYPE 2
Callistemon 'Kings Park Special'

KEY	
	PROPOSED TREE TYPE 1 - Agave Mexicana
	PROPOSED TREE TYPE 2 - Callistemon 'Kings Park Special'
	PROPOSED TREE TYPE 3 - Eucalyptus Incurvata 'Nana'
	PROPOSED TREE TYPE 4 - Eucalyptus Forward
	PROPOSED TREE TYPE 5 - Melaleuca Australasica
	PROPOSED TREE TYPE 6 - Melaleuca quinquenervia
	EXISTING LIGHT POLE
	EXISTING BUS STOP
	GAS
	SEWER
	TELECOM
	WATER
	UNDERGROUND POWER
	OVERHEAD POWER



No.	REVISION	BY	DATE	AUTH.	No.	REVISION	BY	DATE	AUTH.	No.	REVISION	BY	DATE	AUTH.	SCALE	SCALE IN METERS	DATE	DRAWN	CHECKED	APPROVED	PROJECT No.
0	ISSUE FOR CONSTRUCTION		14/04/2015	PM											1:1000		28/04/2015				19378
1	TREE COORDINATE RECORD		04/03/15	PM													28/04/2015				PR - 2993

* INDICATES SIGNATURES ON ORIGINAL ISSUE OF DRAWING

<p>CITY OF WANNEROO INFRASTRUCTURE</p>	<p>ALEXANDER HEIGHTS VERGE TREE PLANTING</p>	<p>ALEXANDER HEIGHTS</p>	<p>PLAN: CROMWELL ROAD</p>	<p>DRAWING No.</p>	<p>REGIONAL Dwg. SIZE</p>
			<p>SHEET</p>	<p>A1</p>	